

<https://doi.org/10.1038/s41526-024-00428-x>

Nitrogen accountancy in space agriculture

Check for updates

Kevin Yates^{1,2}✉, Aaron J. Berliner^{1,3,4}✉, Georgios Makrygiorgos^{1,5}, Farrah Kaiyom^{1,3}, Matthew J. McNulty^{1,2}, Imran Khan^{1,2}, Paul Kusuma^{1,6}, Claire Kinlaw⁷, Diogo Miron⁷, Charles Legg⁷, James Wilson⁷, Bruce Bugbee^{1,6}, Ali Mesbah^{1,5}, Adam P. Arkin^{1,3}, Somen Nandi^{1,2} & Karen A. McDonald^{1,2}

Food production and pharmaceutical synthesis are posited as essential biotechnologies for facilitating human exploration beyond Earth. These technologies not only offer critical green space and food agency to astronauts but also promise to minimize mass and volume requirements through scalable, modular agriculture within closed-loop systems, offering an advantage over traditional bring-along strategies. Despite these benefits, the prevalent model for evaluating such systems exhibits significant limitations. It lacks comprehensive inventory and mass balance analyses for crop cultivation and life support, and fails to consider the complexities introduced by cultivating multiple crop varieties, which is crucial for enhancing food diversity and nutritional value. Here we expand space agriculture modeling to account for nitrogen dependence across an array of crops and demonstrate our model with experimental fitting of parameters. By adding nitrogen limitations, an extended model can account for potential interruptions in feedstock supply. Furthermore, sensitivity analysis was used to distill key consequential parameters that may be the focus of future experimental efforts.

The benefits of crop cultivation to support human spaceflight have been explored since the 1950s¹. With the recent emphasis on longer-duration missions to the Moon and Mars (and interplanetary bases in between), human life support must maintain crew health under radically different constraints (e.g. limited availability of emergency resupply)^{2–6}. The continued development of plants within the space bioprocess engineering community⁷ as a source of sustenance⁸, medicine⁹, and various other high-value life support products addresses the challenges of technology research of the National Aeronautics and Space Administration (NASA) to manage space resources and expand the human presence beyond Earth¹⁰.

Martian agriculture (Fig. 1) has been shown to be a theoretically feasible alternative to pre-packaged meals, but caloric intake alone does not fully describe the requirements for astronaut sustainability; pharmaceutical needs must also be met^{1,9,11}. Additionally, the space environment imposes a further risk of compromised food consumables and requires additional reserves of elemental carbon, nitrogen, and phosphorus¹². Although there are some physicochemical means to recycle a subset of these elements, they are usually mass and energy intensive¹³, and they generally require additional downstream processing¹⁴. Given that the demand for consumable food mass scales nearly linearly with the increasing mission duration/crew size and that storage of larger quantities of food necessitates additional costs in refrigeration, storage, and power, crop cultivation provides a means for cost reduction^{6,11,15}.

A primary advantage of a space bioprocess engineering⁷ is the interconnectivity and recyclability of the components of an integrated biomanufacturing¹⁶. To date, crop cultivation has been typically studied and characterized in many configurations (Fig. 1a) as an isolated system. There have been some exceptions from ESA's MELiSSA (Micro-Ecological Life Support System Alternative) where crops are integrated into a biomanufacturing concept and in studies on air revitalization^{17–19}. Correspondingly, the established crop cultivation mathematics of NASA's modified energy cascade (MEC) model^{11,20} are designed to model crop cultivation behavior of a single crop type in isolation, focusing on providing information relevant to traditional crop cultivation outcomes (e.g. food, environmental revitalization). This model predicts dry weight (DW) biomass production (the focus of this work) and oxygen production using photosynthetic photon flux and atmospheric carbon dioxide concentration; it is also a basis for modeling water transpiration in the crop canopy²¹. The MEC model specifies environmental conditions for a crop of interest and requires that water and nutrients are not growth limiting. The nomenclature and mathematics of the model presented here are adapted from their original forms to align more closely with engineering conventions; see the Methods section for details. In the MEC model, the change over time of the biomass per unit growing area on a DW basis in a single reactor of some crop i , denoted as \hat{m}_B [$\text{g}_{\text{DW}} \text{m}^{-2}$], is formulated by a

¹Center for the Utilization of Biological Engineering in Space (CUBES), Berkeley, CA, USA. ²Department of Chemical Engineering, University of California Davis, Davis, CA, USA. ³Department of Bioengineering, University of California Berkeley, Berkeley, CA, USA. ⁴Program in Aerospace Engineering, University of California Berkeley, Berkeley, CA, USA. ⁵Department of Chemical and Biomolecular Engineering, University of California Berkeley, Berkeley, CA, USA. ⁶Department of Plant Soils and Climate, Utah State University, Logan, UT, USA. ⁷Zea Biosciences Inc., Walpole, MA, USA. ✉e-mail: kyates@ucdavis.edu; aaron.berliner@berkeley.edu

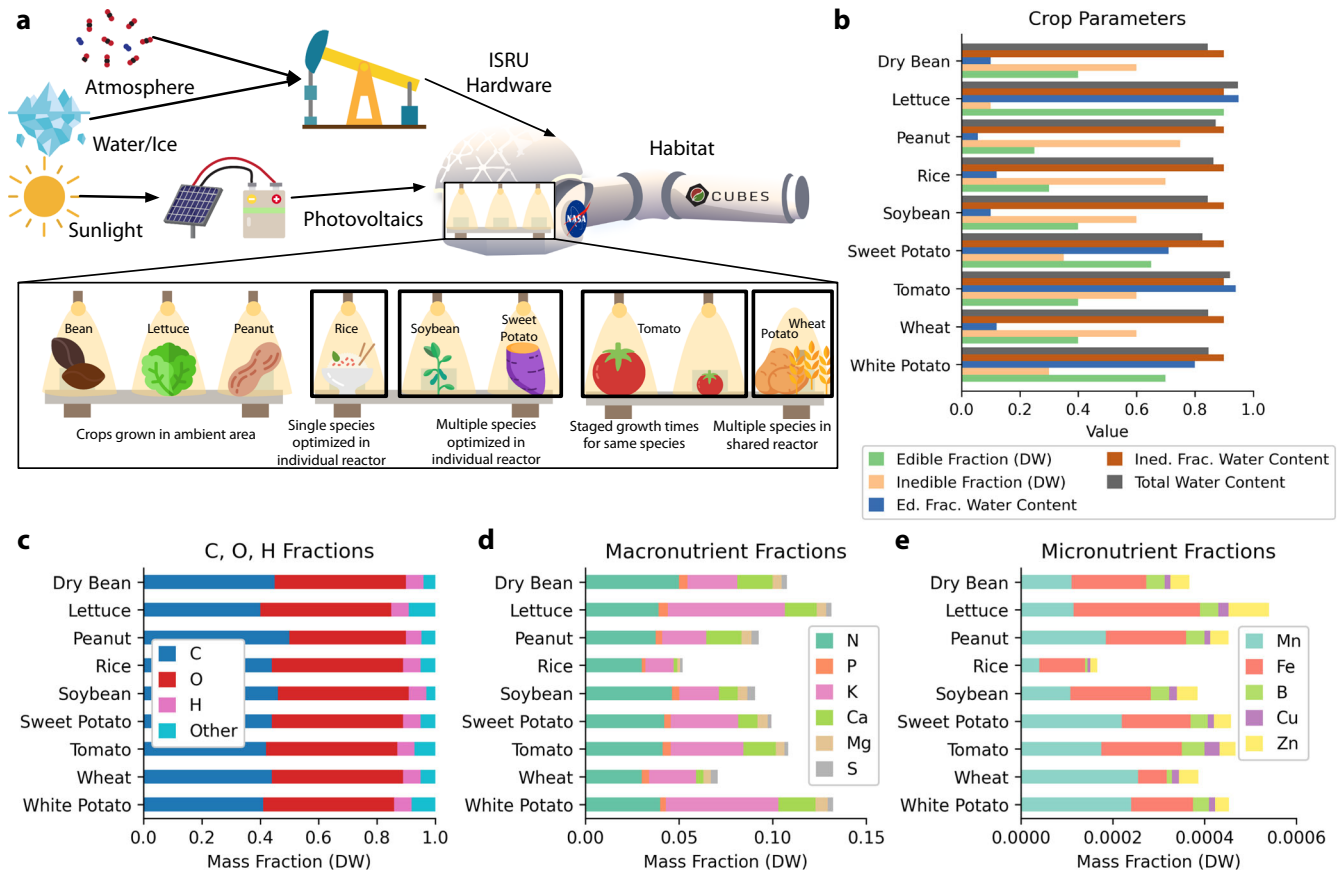


Fig. 1 | Mars-based agriculture overview. **a** Scheme for deploying agriculture systems on Mars using In Situ Resource Utilization (ISRU) with an expansion of candidate crops within habitat¹¹. The expansion of crop systems includes example groupings of crops and hydroponic reactor logistics. **b** Breakdown of crop parameters for nine MEC-modeled space crops: water content fractions and edible (harvest index)

and inedible fractions of biomass on a dry weight (DW) basis¹¹. Values are out of 1. **c** Carbon content reference values¹¹ and approximate oxygen and hydrogen fractions typical in cultivated plants⁸¹; “Other” fraction does not correspond numerically to (d, e) as shown here. **d** Compiled values for nitrogen and other macronutrient fractions in field-grown plants^{82,83}. **e** Micronutrient fractions in field-grown plants^{82,83}.

differential equation as

$$\frac{d\hat{m}_{B,i}}{dt} = \hat{m}_{B,i} = \frac{\dot{m}_C}{w_{C,i}} \hat{n}_{C,i} \quad (1)$$

$$= 0.0036 \cdot \frac{\dot{m}_C}{w_{C,i}} \left(H_i \cdot \eta_{C,i} \cdot A_i \cdot \Phi_{\gamma,i} \cdot Y_{Q,i} \right) \quad (2)$$

where \hat{m}_B is areal (“per area”) crop biomass growth rate in [$\text{g}_{\text{DW}} \text{d}^{-1} \text{m}^{-2}$], t is time in [d_{AE}] (days after seed emergence), \dot{m}_C is the molar mass of carbon in [$\text{g}_C \text{mol}_C^{-1}$], w_C is the dimensionless carbon mass fraction in plant biomass [$\text{g}_C \text{g}_{\text{DW}}^{-1}$], and \hat{n}_C is the daily carbon gain in [$\text{mol}_C \text{d}^{-1} \text{m}^{-2}$]. The term \hat{n}_C can be represented as the product of the photoperiod H in [h d^{-1}], the 24-hour carbon use efficiency η_C in [$\text{mol}_{C,\text{biomass}} \text{mol}_{C,\text{fixed}}^{-1}$], the time and species dependent dimensionless fraction of photosynthetic photon flux absorbed by the plant canopy A , incident photosynthetic photon flux²² (PPF) Φ_γ in [$\mu\text{mol}_\gamma \text{m}^{-2} \text{s}^{-1}$], and the quantum yield of the canopy Y_Q (a function of Φ_γ and atmospheric concentration of carbon dioxide, c_{CO_2} [ppm or $\mu\text{mol}_{\text{CO}_2} \text{mol}_{\text{air}}^{-1}$]) in [$\text{mol}_{C,\text{fixed}} \text{mol}_{\gamma,\text{absorbed}}^{-1}$]. The total areal biomass \hat{m}_T in [$\text{g}_{\text{DW}} \text{m}^{-2}$] and the edible areal biomass \hat{m}_E in [$\text{g}_{\text{DW}} \text{m}^{-2}$] for some crop i are calculated by

$$\hat{m}_{T,i} = \int_0^{t_{M,i}} \hat{m}_{B,i} dt \quad (3)$$

$$\hat{m}_{E,i} = f_{E,i} \int_{t_{E,i}}^{t_{M,i}} \hat{m}_{B,i} dt \quad (4)$$

where t_M is the crop-specific time of harvest or maturity in [d_{AE}] and f_E is the dimensionless crop-specific fraction of daily carbon gain allocated to edible biomass after t_E , which is the crop-specific time of organ formation onset in [d_{AE}]. Nine crops of interest have been parameterized for use with the MEC model. For each, Fig. 2 shows the model’s biomass output (a) over time for constant Φ_γ and c_{CO_2} , and (b) at harvest time given varying Φ_γ and c_{CO_2} . A schematic view of the MEC model for *Lactuca sativa* (lettuce) is shown in Figure S1.

Nitrogen productivity model

Nitrogen is an essential plant nutrient central to the synthesis of photosynthetic proteins and pigments. The availability of nitrogen in the rootzone is therefore a decisive factor for plant photosynthetic capacity, growth, and yield^{23,24}. Modeling the effect of nitrogen on plant growth conditions becomes of paramount importance within the scope of biologically-driven mission planning since nitrogen is a limited resource that needs to be optimally allocated to ensure proper food and pharmaceuticals production and subsequent safety of the crew members²⁵. A Martian mission design is a non-trivial problem, and since the decision making is partially driven by models, any uncertainty regarding their predictive capability should be taken into account. Thus, working toward a validated model that forecasts the success of crop growth given the availability of nitrogen, as well as a description of confidence in this prediction, is of great importance to this goal²⁶.

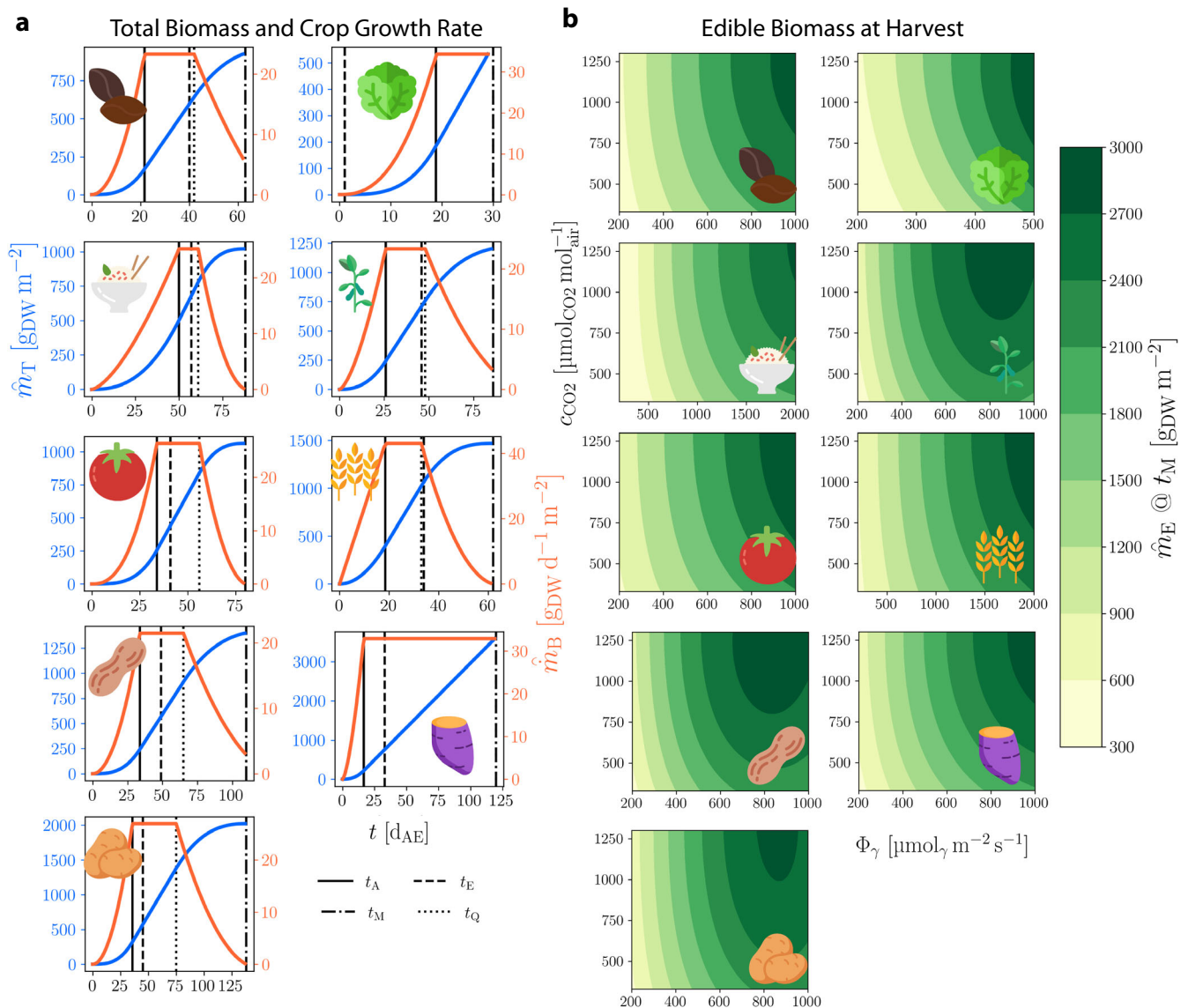


Fig. 2 | Modified energy cascade model calculations. a MEC model total crop biomass per area, \hat{m}_T (blue), and crop growth rate per area, \hat{m}_B (orange), for (from top left) dry bean, lettuce, rice, soybean, tomato, wheat, peanut, sweet potato, and white potato with parameters $\Phi_\gamma = 500 \mu\text{mol}_\gamma \text{m}^{-2} \text{s}^{-1}$, $c_{\text{CO}_2} = 1200 \mu\text{mol}_{\text{CO}_2} \text{mol}_{\text{air}}^{-1}$.

Crop-specific time points [d_{AE}]: t_A , canopy closure; t_M , harvest/maturity; t_E , onset of organ formation; t_Q onset of canopy senescence. **b** MEC model contours of edible biomass accumulation, \hat{m}_E , for each crop terminating at t_M , across Φ_γ and c_{CO_2} .

A theory of nitrogen productivity (NP) was developed by Ågren in response to the complexity of other nutrient-driven plant growth models; the theory posits that plant biomass growth is determined by the total amount of nitrogen in a plant at a given time²⁷. The theory assumes that for a species in fixed environmental conditions, growth can be described by the nitrogen productivity parameter, which is the quantity of biomass produced over a given time step per quantity of nitrogen in the plant, and that this value is constant during the plant’s main growth phase. NP theory is applicable when nitrogen is the limiting factor for biomass growth. The equation which describes growth has the form

$$\frac{dm_B}{dt} = \dot{Y}_N \cdot m_N \quad (5)$$

where m_B is total plant biomass on a dry weight basis in [g_{DW}], t is time in [d], and m_N is total amount of nitrogen in the plant in [g_N]. \dot{Y}_N is the nitrogen productivity, the biomass produced per day per amount of nitrogen in the plant in [g_{DW} d⁻¹ g_N⁻¹]. Rearranging, nitrogen productivity is

defined in quantities which can be experimentally measured:

$$\dot{Y}_N = \frac{1}{m_N} \frac{dm_B}{dt} \quad (6)$$

Ågren assumed that \dot{Y}_N has the form

$$\dot{Y}_N = a - a' \frac{m_B}{m_N} \quad (7)$$

where a is a leading term in [g_{DW} d⁻¹ g_N⁻¹] and a' is a correction term in [d⁻¹]. Both are species-specific constants for fixed environmental conditions. Verkroost & Wassen suggested physically meaningful descriptions of these terms, with a being the product of the dimensionless efficiency of photosynthetic nitrogen (*i.e.* biologically active in photosynthesis-involved enzymes) formation from total plant nitrogen and efficiency of biomass formation from photosynthetic nitrogen [g_{DW} d⁻¹ g_N⁻¹] and with a' as the degradation rate of photosynthetic nitrogen [d⁻¹]²⁸.

The concept of nitrogen use efficiency (NUE) was coupled with NP theory to build a framework for modeling nitrogen-limited growth which considers quantities of agricultural interest. The precise definition of NUE has varied depending upon its intended application, but in general it refers to a biomass yield given a quantity of exogenous nitrogen provided per plant, or per area for field grown crops. Here we introduce three model quantities derived from a general approach to NUE calculations^{29,30}. The nitrogen productivity is given the form

$$\dot{Y}_N = \eta_N \cdot \mu_N \cdot \eta_u \tag{8}$$

The NUE quantity, η_N [$\text{g}_{\text{DW}} \text{g}_N^{-1}$], is the biomass (dry weight basis) produced per average total mass of N in the plant over a time period. The second quantity, relative nitrogen accumulation rate (RNAR), μ_N [d^{-1}], is the mean relative accumulation rate of N over a time period. The third, uptake efficiency, η_u [dimensionless or (g d^{-1})/(g d^{-1})], is the ratio of a plant's current uptake rate of nitrogen to its maximum. It is intended to account for abiotic effects on uptake such as temperature or pH of nutrient support solution^{31,32}. To our knowledge, no modeled data for η_u are reported in literature; in this work we suppose that it is equal to 1. Its presence provides a path forward within the space agriculture community for directed research. A simple assumption is to calculate values of η_N and μ_N from experimental measurements by

$$\eta_N = \frac{m_B(t_2) - m_B(t_1)}{\bar{m}_N(t_2, t_1)} \tag{9}$$

$$\mu_N = \frac{\ln m_N(t_2) - \ln m_N(t_1)}{(t_2 - t_1)} \tag{10}$$

where t_2 and t_1 are the time points at the end and beginning of a time step, typically³³ in [d] or [week], and \bar{m}_N is the mean total N in the plant over a time step ($t_2 - t_1$) in [g_N]. The appropriate time step for both equations depends on harvest interval, the particular crop, and its growth stage. Finally, given the model output curves shown in Fig. 2, we assume that the total mass of N in the plant, m_N , throughout its life cycle can be described by the three-parameter logistic function, giving

$$m_N(t) = \alpha \frac{m_{N0} \cdot K \cdot e^{rt}}{(K - m_{N0}) + m_{N0} \cdot e^{rt}} \tag{11}$$

and finally

$$\frac{dm_B}{dt} = \eta_N \cdot \mu_N \cdot \eta_u \cdot m_N \tag{12}$$

where m_{N0} is the initial total mass of nitrogen in the plant in [g_N], K is the limiting value of m_N in [g_N], r is the governing rate in [d^{-1}], t is time in [d], and α is a dimensionless scaling factor.

While our study on nitrogen dynamics in hydroponically grown lettuce has broad applicability to general agriculture, it is particularly relevant to space agriculture due to the unique constraints of long-duration space missions. In space, resource optimization, closed-loop nutrient management, and minimization of physiological stress are critical for maintaining crew health and mission sustainability. The development of efficient nitrogen use strategies and the potential utilization of in situ resources, such as amino acids and peptides found on other astronomical bodies^{34,35}, are essential for supporting bioregenerative life support systems in space. This contributes to both terrestrial agricultural advancements and the specialized needs of space agriculture, addressing the challenges of sustainable food production in extraterrestrial environments.

Model integration

The simplest strategy for the use of both NP and MEC models is to use the MEC model by default and a NP model in the case of nitrogen-limited growth. A slightly more complex option is to combine each model's growth curves such that either can act as a limiting factor. This approach accounts for changing limitations during the growth period. A flowchart representation of a basic algorithm is shown in Fig. 3 alongside example output.

A fully integrated MEC-NP model should also include limiting effects of off-nominal growth environment parameters such as air temperature, relative humidity, and air circulation on biomass generation. Additionally, in hydroponic and aeroponic systems, temperature, pH, dissolved oxygen, and molecular concentrations in the nutrient support solution can affect biomass growth^{36,37}. It is important to consider that both traditional selection and breeding as well as genetic engineering have produced crop plants that can adapt to a range of abiotic stresses³⁸; development of specialized crop lines would be expected for use in spaceflight³⁹ and certain limiting effects could be minimized. For comparison with MEC model, a NP model must account for required growing area and edible fraction of biomass, which in nitrogen-limited growth conditions may be different than the MEC reference values.

Results

An experiment was designed to measure the nitrogen content and biomass accumulation over time in hydroponically grown *Lactuca sativa* cv. "Waldmann's Dark Green", a looseleaf lettuce reference cultivar (Fig. S2), in deficient, normal, and excess nitrogen conditions. Lettuce has served as a useful model for space agriculture^{11,40,41}. A batch

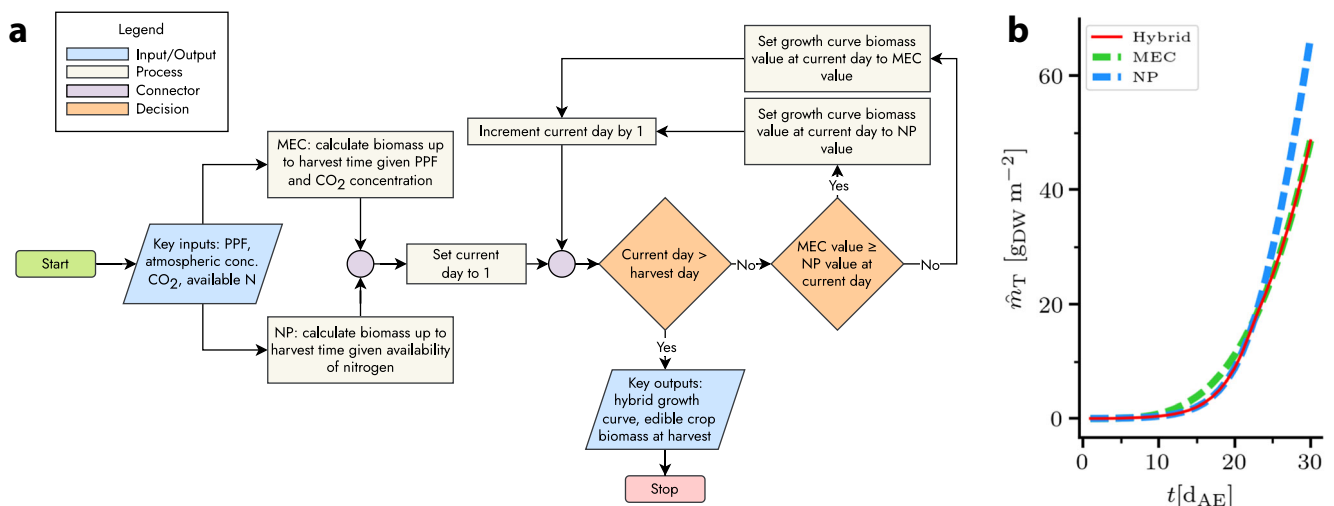


Fig. 3 | Hybrid MEC-NP modeling. **a** Algorithm by which the growth curves of the MEC and NP models act as limiting factors in a hybrid growth curve. **b** Example of hybrid growth curve, limited first by nitrogen, then by photosynthetic photon flux, atmospheric CO₂ concentration, or both.

strategy was used for the hydroponic systems' nutrient support solution (NSS); no nitrogen was added to the NSS reservoirs after the initial dose. The initial baseline concentration of nitrate (NO_3^-) was equal in all N conditions, while the initial ammonium (NH_4^+) concentration was varied (see Tables S2 and S3). The nitrogen conditions were as follows: deficient (1.0 mM nitrate, 1.5 mM ammonium); normal (1.0 mM nitrate, 6.5 mM ammonium); excess (1.0 mM nitrate, 11.5 mM ammonium). The methodology and growth environment are detailed in the Methods section.

The seed germination percentages were 71%, 81%, and 62% for deficient, normal, and excess N levels, respectively. The particular hydroponic system used shows an average germination percentage of 85% for lettuce given normal N. The biomass data were compared to the output of the MEC model (Eq. (2)) with inputs of the average values of Φ_p and c_{CO_2} observed in the hydroponic system (Fig. 4a); see Fig. S6a, b for the growth rate [$\text{g}_{\text{DW}} \text{d}^{-1}$] and relative growth rate⁴² [$\text{g}_{\text{DW}} \text{d}^{-1} \text{g}_{\text{DW}}^{-1}$].

The excess nitrogen condition resulted in the lowest average biomass at harvest time (defined as 30–35 d_{AE}), while the normal condition resulted in the highest. The MEC prediction of biomass was most similar to the growth curve of the normal nitrogen condition over the time period shown. Its

predicted values were similar to the deficient condition measurements until 30 d_{AE} , and its predictions were consistently higher than the measured biomass in the excess condition. This demonstrates the need for extension of the MEC model to account for nitrogen availability, whether in deficit or excess.

For all conditions, the average fresh weight percentage of N decreased over time (Fig. 4b). Toward t_M , the average mass fraction of plant N in the normal condition was smaller than that of the excess condition, yet the plants in the normal condition achieved greater average biomass, indicating that excess ammonium may have induced growth-inhibiting stresses. In the deficient condition, the average plant N content was lower than in the other conditions, but the average biomass was higher than the plants in the excess condition and was similar to that of the plants in the normal condition up to 30 d_{AE} . This indicates that the plants in deficient conditions may have used N for growth more efficiently than plants in the other conditions at the expense of their average biomass at t_M . The average nitrogen content across all conditions over time on a fresh weight basis was $0.36 \pm 0.13\%$, similar to a reported value of 0.16% for iceberg lettuce measured by the same analytical method⁴³. In terms of non-normalized mass of N (Fig. S6c), the plants in normal and excess conditions contained an increasing average mass of

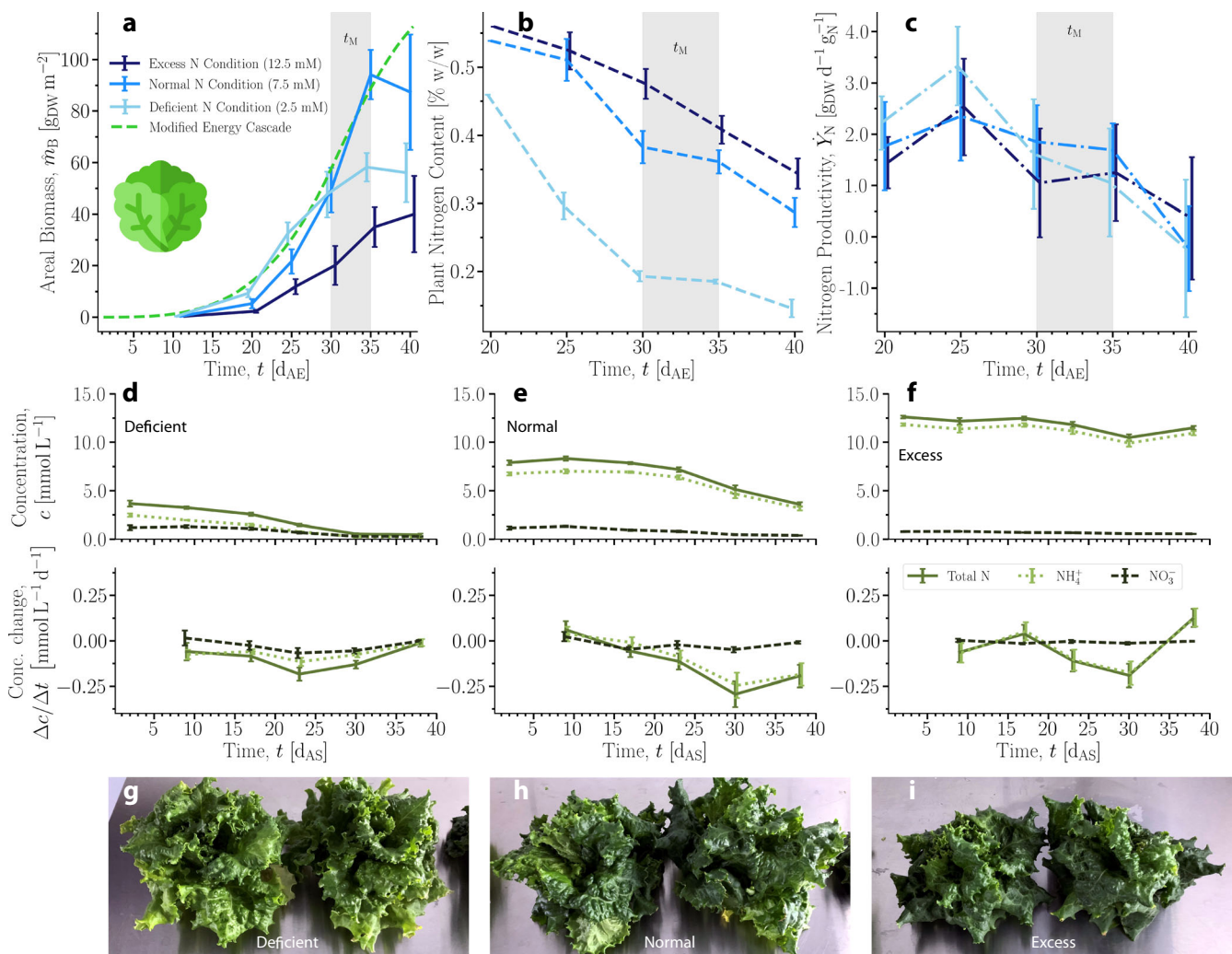


Fig. 4 | Nitrogen Productivity Studies. **a** Measured areal biomass and MEC model curve calculated with $\Phi_p = 225 \mu\text{mol} \cdot \text{m}^{-2} \cdot \text{s}^{-1}$ and $c_{\text{CO}_2} = 525 \text{ ppm}$. **b** Measured fresh weight percentage of total nitrogen in plants over time. A single measurement was performed for each condition at 20 d_{AE} . **c** Nitrogen productivity calculated from measured biomass and nitrogen content. Error bars represent propagated error. **a–c** Time range highlighted in gray is specified harvest time, t_M , plus 5 d^{11} . Error bars

represent one SD. For each data point, $5 \leq N \leq 10$. **d–f** Concentration and change in concentration of nitrogen measured in the NSS over time by experimental condition (deficient, normal, excess). Error bars represent 1 SD. $N = 3$ for each data point. **g–i** Photos of lettuce crops during main growth phase at 35 d_{AE} grown in deficient, normal, and excess nitrogen conditions, respectively.

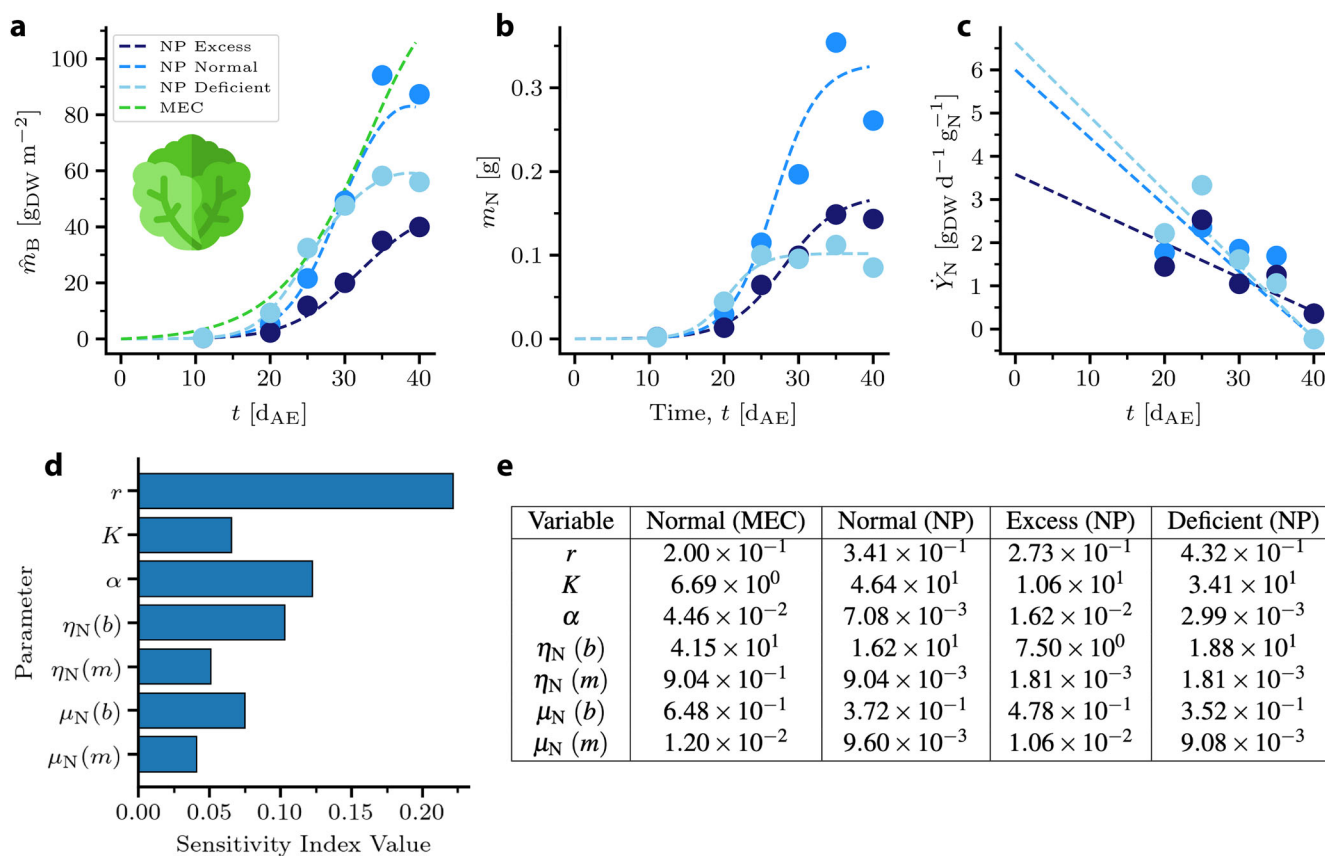


Fig. 5 | Lettuce model comparison. **a** Experimental data (circles) and NP model fits (lines) for lettuce biomass predicted by the MEC model and grown in 3 different nitrogen conditions. **b** Fitting of m_N by values of r , K , and α to experimental mass of N in plant. **c** Fitting of \dot{Y}_N by functions for η_N and μ_N to nitrogen productivity calculated from experimental data. **d** Sensitivity analysis result based on the ranges

defined by the fitting procedure. The y – axis denotes the variable of interest while the x – axis represents the corresponding variable’s index value. **e** Fitted NP parameter values for MEC baseline and experimental N conditions. r : governing rate in $[d^{-1}]$; K : limiting value of m_N in $[g_N]$; α : dimensionless scaling factor; η_N : nitrogen use efficiency in $[g_{DW} g_N^{-1}]$; μ_N : relative nitrogen accumulation rate in $[d^{-1}]$.

nitrogen through the harvest period, while the plants in the deficient condition initially increased before leveling off around 25 d_{AE} .

Nitrogen productivity (\dot{Y}_N) was calculated from measured biomass and nitrogen content data (Fig. 4c). The overall average nitrogen productivity under the normal N condition was $1.33 \pm 0.79 g_{DW} d^{-1} g_N^{-1}$; under the deficient and excess conditions, it was 1.49 ± 0.99 and $1.90 \pm 1.32 g_{DW} d^{-1} g_N^{-1}$, respectively. The average of \dot{Y}_N across all conditions was $1.47 \pm 0.99 g_{DW} d^{-1} g_N^{-1}$. Empirical values in literature for \dot{Y}_N in other plants are on the order of 10^{-1} to 10^0 , though it should be noted that these mostly describe woody plants²⁷. The value of nitrogen productivity appears to decrease near the end of the measured period, indicating that the assumptions of the NP model may have limitations outside of the main growth phase.

The molar concentrations of nitrate and ammonium in the NSS reservoirs, c [mM], were measured from 2–40 d after sowing (d_{AS} , preceding d_{AE} by 3 d). The concentrations and changes in concentrations over time are shown in Fig. 4d, e, f for each N condition. The concentrations over time grouped by molecular form of N are shown in Fig. S7, and the relative changes of the concentrations from the initial values are shown in Fig. S8. In the deficient N condition, the rate at which both forms of N were depleted from the NSS did not show any large fluctuations over the course of the experiment. In the normal and excess N conditions, nitrate was depleted at a mostly constant rate over the time course, but ammonium depletion accelerated. The measured increase in ammonium concentration at 38 d_{AS} in the excess N condition occurred around the time that biomass was leveling off. This is possibly due to the plants beginning to bolt, at which time they reallocate resources to transition from vegetative growth to flowering, as a response to the stress in this condition.

By 30 d_{AS} , the plants in the deficient condition had depleted almost all available nitrogen but were still able to produce biomass; vascular plants can effectively take up nitrogen even when concentration is relatively low⁴⁴. In all conditions, the depletion of nitrogen continued even as a number of plants were harvested and removed from the system every 5 days (Fig. S9). Representative photos of plants from each condition at the end of the harvest period are shown in Fig. 4g–i.

The parameters of the NP model (Eqs. (11) and (12)) were fitted to the MEC curve as a baseline as well as to the experimental curves (Fig. 5a). The NP parameter values fitted to the MEC growth curve were not constrained by the experimental data. The fits to the experimental curves were constrained by the measured values of m_N and measurement-derived calculations of \dot{Y}_N over time (Fig. 5b, c); the linear approximations of \dot{Y}_N may not be representative of its behavior prior to the time period of the data. It was assumed that α and K did not vary with time since they represent scaling and limiting factors, respectively. The governing rate of N accumulation in the plant, r , was also assumed to be time-independent. The initial total mass of nitrogen available, m_{N0} , was assumed to be on the order of 10^0 mg. RNAR (μ_N) and NUE (η_N) were approximated as varying linearly with time and were fitted by y – intercept (b) and slope (m). The fitted parameters are shown in Fig. 5e. Planting density and fresh weight water content were used as described above to compare the NP curves to the MEC curve.

Due to the inclusion of various mechanistic equations to capture the kinetics of growth, the model was potentially overparameterized, *i.e.* more parameters existed than were necessary to fit the available data. To address this issue and to identify the most important parameters, a sensitivity analysis was performed to help determine which parameters had the greatest impact on the model predictions (Fig. 5d). Sensitivity analysis is

closely related to uncertainty quantification (UQ) and is a standard tool to assess the physical impact of the parameterization on the model predictions⁴⁵.

Model analysis

This section describes the analysis of the model's predictive capability to capture the fundamental effects of nitrogen content on growth. First, ranges and estimates regarding the model parameters were acquired. As explained in the Results section, the model parameters were fitted to several experimental variables. It was assumed that the parameters were condition-dependent. Thus, a different set of parameters was estimated for each N condition. Overall, the model adequately captured the experimental m_B and m_N points, while it was able to reproduce the decreasing trend in the \dot{Y}_N data.

A global sensitivity analysis (GSA) was performed to quantify the effect of the model parameters on the model predictions⁴⁶. The quantity of interest (QoI) in this case was the area under the curve of the biomass concentration over time, a representative variable for the entire dynamic behavior of the system. It was assumed that each variable followed a uniform distribution. The lower and upper bounds for each distribution were determined by examining Fig. 5e. For each parameter, represented as a row in the table, the minimum and maximum values across the columns were identified and used as lower and upper bounds respectively. The results shown in Fig. 5d illustrate the relative impact of the model variability on the dynamic behavior of the system. It was observed that the growth evolution is affected strongly by approximately half of the variables. In GSA, it is common to observe an uneven impact of parameters on the variability of the QoI⁴⁷, while this phenomenon is directly tied with the physical meaning of each parameter. Here, the most influential parameter seemed to be the rate of N accumulation, r , which directly ties to NP theory. However, while r was highest in the deficient condition, the resulting biomass was lower than in plants under the normal condition, suggesting that the effects of off-nominal N reduced total biomass accumulation, and are accounted for by K .

Subsequently, the dynamic behavior and sensitivity of other crops to the NP model parameters were analyzed similarly to lettuce. Though experimental data for the other crops were not available, some appropriate parameter values for them were obtained by fitting the NP model to the predictions of the MEC model. Once the parameters were fitted, it was assumed that they followed a uniform distribution by perturbing them by $\pm 10\%$ around their nominal values. This is a common approach when a prior distribution for parametric uncertainty is not well established⁴⁵. From the results shown in Fig. 6, it is evident that the NP model was able to perfectly fit the MEC model predictions. Similar to the results from lettuce growth, the rate of N accumulation, r , still appears to play a significant role in the growth dynamics of most plants, being one of the most influential parameters in most crops. Collectively, other parameters that stand out as affecting growth are η_N and μ_N . A similar trend was observed in lettuce; however, the effect of r in lettuce was much more pronounced. A key general observation is that when nitrogen dynamics are included in the prediction of growth dynamics, the variation of the corresponding parameters of N evolution over time seems to induce most of the variation in growth, exemplifying the effect of N. It should be noted that the validity of the GSA for the crops, in the absence of experimental data, is limited to this particular model structure and distribution of its parameters. The GSA indices reveal the relative significance of the parameters included in the model and do not take into consideration other factors that might affect crop growth unless they are explicitly accounted for in the model. In addition, since the GSA relies on sampling techniques from the assumed distribution (uniform here), a shift in distribution can have an impact on the sensitivity indices. Nevertheless, the same analysis can be applied to more comprehensive models that describe more complex growth dynamics. It is important to recognize that crop growth is influenced by a multitude of factors, including environmental conditions and other nutrient availability. Future work should aim to integrate these additional

factors into the models to provide a more holistic understanding of crop growth dynamics.

Discussion

Plant growth and development depends largely on the available concentration of nitrogen in growth conditions, whether in soil or in soil-less hydroponic systems. The mineral nutrients are absorbed by plant roots and therefore their availability in the soil or hydroponic medium is critical for its absorption to maintain normal physiological processes⁴⁸. While the batch strategy for nutrient provision and the environmental growing conditions provided baseline data for testing the NP model, behavior under conditions expected in a life support environment could be explored by increasing the CO₂ concentration to around 1200 ppm, maintaining constant nutrient concentrations in the NSS, and periodically replacing the NSS as part of a semi-continuous process^{26,49,50}.

Nitrogen plays an essential role in the structure of amino acids and N-bases; therefore its depletion in the growth medium may halt important physiological processes crucial for plant growth⁵¹. In general, a plant in N stress conditions exhibits symptoms such as stunted growth, yellowing of the leaves, leaf death, and reduction in chlorophyll production, and therefore ultimately contributes heavily to the reduction of overall crop yield⁵². In lettuce, nitrogen deficiency stress conditions result in a slower growth rate and reduction in water content⁵³. Given the similar responses among diverse crop plants to nitrogen deficiency⁵⁴, the reduction in lettuce biomass would be expected. Alternatively, an excess of N availability can also negatively affect plant growth parameters such as root and shoot biomass⁴⁸. It is expected that the experimental growth curves, and thus the NP fitting parameters, depend on the form of N that is provided in deficient, normal, and excess concentrations. This is due not only to how the N is taken up and used, but also to its effects on the NSS. Relevant to the experiment described herein, elevated NH₄⁺ concentration relative to NO₃⁻ reduces the pH of the NSS and, when taken up by the plant, can inhibit the uptake of other cations⁴⁹, demonstrating the importance of the choice of nutrient feed strategy and of monitoring and control systems. Figure S5 shows the pH measurements during the course of the experiment; notably, of those which were out of range, the greatest quantity and magnitude were in the normal N condition, yet its average biomass was greatest, indicating that the detrimental effects on biomass observed in the excess nitrogen condition may be influenced by additional factors⁵⁵.

As an alternative to conventional soil production, growing lettuce hydroponically is a popular approach, especially in urban settings, uncultivated lands, and other constrained environments. Lettuce plants grown in solid substrate and hydroponically within the same environment showed no significant differences in or shoot weight or morphological features (except enhanced root growth in hydroponics)^{56,57}, but biomass yield is only one metric of many used to evaluate a crop production component of a life support system. For example, the nutritional profile must be considered as well, as differences in the concentrations of starches, sugars, and other bioactive compounds have been observed depending on the growth system as well as the amount and molecular form of N provided^{56,58,59}.

The observations made in our study, conducted in a water-based hydroponic system, may not be directly applicable to soil- or growing media-based systems. Soil or non-inert growing media can significantly impact nitrogen dynamics in the root zone due to factors such as the microbiome composition and its activity, organic matter decomposition, and interactions with soil particles. These factors can alter nitrogen availability and uptake efficiency compared to the relatively controlled environment of hydroponic systems. Future studies should consider these differences and investigate nitrogen dynamics in various growing media to better understand their implications for space agriculture and other applications.

The trade-off between using traditional fertilizers and In Situ Resource Utilization (ISRU) for plant growth becomes apparent in such missions. While fertilizers are a proven method for providing nutrients, their use in space is limited due to the constraints of weight, volume, and stability. ISRU,

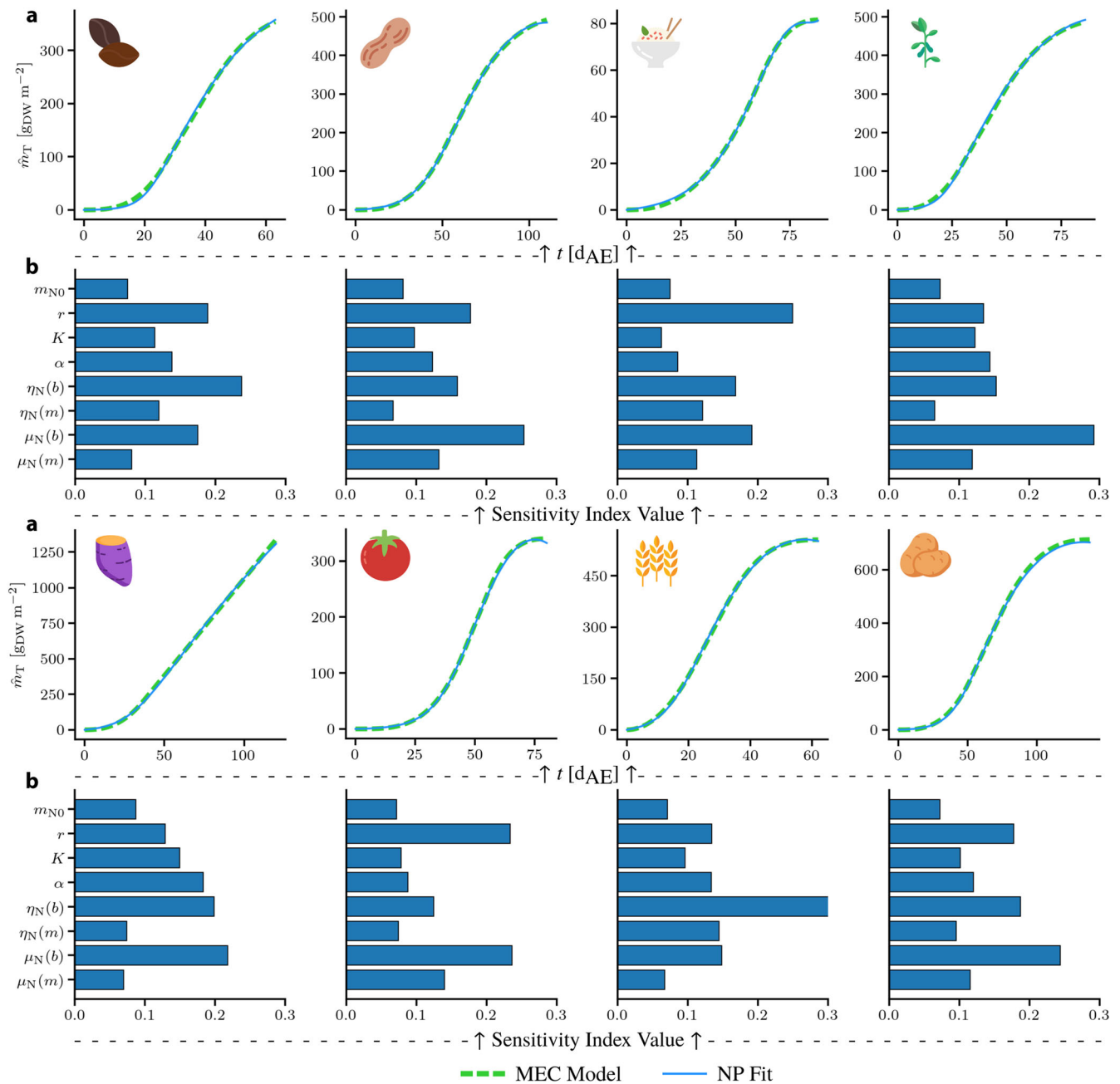


Fig. 6 | MEC and NP Model Projection Comparison. **a** NP model fits to MEC growth curves ($\Phi_y = 225 \text{ mol, m}^{-2} \text{ s}^{-1}$, $c_{\text{CO}_2} = 525 \text{ ppm}$) for dry bean, peanut, rice, soybean, sweet potato, tomato, wheat, white potato. **b** Sensitivity analysis result

based on the ranges defined by the fitting procedure. The y – axis denotes the variable of interest while the x – axis represents the corresponding variable’s index value.

on the other hand, offers the potential to harness available resources for plant growth. However, the implementation of ISRU technologies is still in its nascent stage and requires further research and development. Organic nitrogen sources, such as amino acids and peptides, are promising alternatives for nitrogen supply in space agriculture as they are prevalent in biological wastes via loop-closure. These compounds can be collected using advanced extraction and processing technologies, potentially involving biomining with engineered microbes. Other nitrogen sources, such as nitrates and ammonia, can be generated through ISRU technologies. Plants can efficiently take up amino acids and peptides through their roots, offering a viable pathway to enhance nitrogen use efficiency and reduce reliance on traditional inorganic fertilizers in space agriculture^{50,61}.

Our study focuses on nitrogen limitations due to their critical role in plant growth and its availability in the Martian atmosphere, making it a key

factor for space agriculture. However, other nutrients, such as phosphorus, which is present in a locked P_2O_5 state on Mars¹¹, could also become limiting. Our modeling approach, based on nitrogen dynamics, can be adapted to study other nutrient limitations by adjusting parameters to account for specific nutrient dynamics. This adaptability makes our approach transferable and valuable for comprehensive nutrient management in space agriculture, ensuring the resilience of agricultural systems for long-duration space missions.

As for the next steps, the developed model provides a robust framework that can be extended to other crops. Each crop will have its specific nitrogen requirements, growth patterns, and responses to various nitrogen conditions. Comparative studies among different crops can shed light on their suitability for cultivation in a space environment, considering their nutrient requirements, growth rate, and yield.

Comparing the findings in this work to recent MEC publications, the model aligns well with the ongoing research trends. The focus on resource efficiency, especially the efficient use of nutrients, is a common theme. However, this work extends it by specifically modeling the impact of different nitrogen conditions on plant growth, providing a tool for more nuanced nutrient management.

It is important to underline the appropriate use of the model and understand its limitations. While the model provides valuable insights into plant growth under different nitrogen conditions, it is based on the assumptions made and the data used for calibration. It may not capture the full complexity of real-world plant growth, particularly under extreme or unforeseen conditions. Therefore, the model should be used as an approach and as a tool for guidance, not as an absolute predictor. In terms of biological relevancy, the parameters used in the model are grounded in known biological processes. They represent various aspects of plant growth, such as nitrogen uptake, metabolic rate, and growth responses to different nitrogen conditions. However, the exact mechanisms and how they are influenced by various factors can be complex and might not be entirely captured by the model. Exploration of growth models⁶² to develop a more generalized mathematical description of nitrogen-limited biomass generation will be beneficial. Assigning physiological meaning to any parameters as well as extending the model to capture responses to external conditions will be important milestones in development of a deterministic model.

Modeling a time-varying environment is an important aspect of accurately modeling plant growth. Environmental factors such as light intensity, temperature, and carbon dioxide levels can fluctuate over time and affect plant growth. Future iterations of the model could incorporate these dynamic elements to provide a more accurate representation of plant growth under varying conditions. Development of an optimal growing strategy may include intentional changes as well; for example, dynamic planting density¹¹ and N concentration in the NSS based on the crop's growth stage could increase efficiency or yield. Finally, the model could be further refined by considering different stages of the plant life cycle, as mentioned in the work of Weih²⁹. Plants exhibit different nutrient requirements and growth patterns during various stages of their life cycle (e.g., vegetative growth, flowering, and fruiting). *L. sativa* is the simplest case among the crops of interest as only vegetative growth is important for production of edible biomass, but in other crops, partitioning and accumulation of nitrogen in different organs also exhibit dynamic behavior by growth stage and by nitrogen availability, so the presence and age of a given organ may influence total nitrogen content of the plant^{63,64}. Measuring the response of organ formation and growth in terms of NP and incorporating the growth stages into the model could provide a more detailed and accurate understanding of plant growth under different nitrogen conditions.

The experimental methods used to package and process biomass and extract nitrogen for measurement will lead to differing results⁶⁵. Plant tissue showed varying nitrogen content depending on whether it was dried by heat, vacuum, or freezing prior to assaying⁶⁶ as well as by the assay chosen^{66,67}. Non-destructive assaying methods such as near infrared spectroscopy could facilitate frequent and localized measurements of nitrogen in the plants' aerial portions⁶⁸. Standardizing the analytical methodology will improve the utility of the model.

Methods

Nomenclature

Nomenclature reformation considered chemical engineering conventions, IUPAC⁶⁹ and IUPAP⁷⁰ documentation, and intuitive understanding. Variables and subscripts which refer to quantities are typeset in italic, while descriptive subscripts are in roman. Diacritics above variables are used to denote per time ($\dot{\square}$) and per area ($\hat{\square}$). Mnemonically, one might think of the inverted breve above areal variables as resembling a surface; this was

derived from the idea that a normal breve, ($\breve{\square}$), might signify volumetric variables as a vessel to be filled.

MEC nomenclature reformation			
Variable	Description	Unit	Former Variable ¹¹
a	Empirical exponent	–	n
c_{CO_2}	Concentration of CO ₂ , molar	$\mu\text{mol}_{\text{CO}_2} \text{mol}_{\text{air}}^{-1}$	[CO ₂]
f_E	Fraction of edible biomass after t_E	–	XFRT
g_{atm}	Atmospheric aerodynamic conductance	$\text{mol}_{\text{water}} \text{s}^{-1} \text{m}^{-2}$	g_A
g_{sfc}	Canopy surface conductance	$\text{mol}_{\text{water}} \text{s}^{-1} \text{m}^{-2}$	g_C
g_{sto}	Canopy stomatal conductance	$\text{mol}_{\text{water}} \text{s}^{-1} \text{m}^{-2}$	g_S
h_R	Relative humidity	–	RH
\hat{m}_B	Biomass per time, areal	$\text{g d}^{-1} \text{m}^{-2}$	CGR
\hat{m}_E	Biomass, areal, edible	g m^{-2}	TEB
\hat{m}_T	Biomass, areal, total	g m^{-2}	TCB
\dot{m}	Mass, molar	g mol^{-1}	MW
\hat{n}	Moles per time, areal	$\text{mol d}^{-1} \text{m}^{-2}$	DCG, DOP
$\hat{n}_{\text{ps, gross}}$	Gross canopy photosynthesis	$\mu\text{mol}_C \text{s}^{-1} \text{m}^{-2}$	P_{GROSS}
$\hat{n}_{\text{ps, net}}$	Net canopy photosynthesis	$\mu\text{mol}_C \text{s}^{-1} \text{m}^{-2}$	P_{NET}
P_{atm}	Total atmospheric pressure	kPa	P_{ATM}
p_S^*	Saturated vapor pressure	kPa	VP_{SAT}
T_D	Temperature, dark cycle	°C	T_{DARK}
T_L	Temperature, light cycle	°C	T_{LIGHT}
t_{sol}	Length of local sol	h d^{-1}	D_{PG}
\hat{V}_{trs}	Daily transpiration rate	$\text{L d}^{-1} \text{m}^{-2}$	DTR
w_C	Biomass carbon fraction	–	BCF
Y_{O_2}	Oxygen production factor	$\text{mol}_{\text{O}_2} \text{mol}_C^{-1}$	OPF
Y_Q	Canopy quantum yield	$\text{mol}_{C, \text{fixed}} \text{mol}_{\gamma, \text{absorbed}}^{-1}$	CQY
Δp^*	Vapor pressure deficit	kPa	VPD
η_C	Carbon use efficiency, 24 hr	$\text{mol}_{C, \text{biomass}} \text{mol}_{C, \text{fixed}}^{-1}$	CUE_{24}

σ_N	Density, areal, numeric	m^{-2}	–
Φ_y	Photosynthetic photon flux	$\mu\text{mol}_y \text{m}^{-2} \text{s}^{-1}$	PPF
$\Phi_{y,E}$	Photosynthetic photon flux, effective	$\mu\text{mol}_y \text{m}^{-2} \text{s}^{-1}$	PPF _E

Lettuce cultivation

The lettuce plants were grown in a hydroponic rack system within a clean room operated by Zea Biosciences in which air temperature, relative humidity, and atmospheric concentration of CO₂ were controlled. The grow rack consisted of 3 independent shelves, each with a NSS reservoir. The pH, water temperature, total dissolved solids (TDS), dissolved oxygen (DO), nitrate concentration, and ammonium concentration in the reservoirs were monitored. The following instruments were used to perform measurements: Hanna HI98103 (pH), Hanna HI98129 (pH, TDS, temperature), Milwaukee Instruments MW600 (DO), and Horiba LAQUAtwin NO3-11 (nitrate). Ammonium concentration was determined by a spectrophotometric method adapted from Kempers & Kok⁷¹. The photosynthetic photon flux was set by adjusting the height of the shelves. A Hydrofarm LGQM2 PAR meter was used to measure photosynthetic photon flux until the 4th week of growth, at which time the size of the plants was too large for measurements to be taken.

Controlled environmental set points and the measured ± 1 standard deviation over the course of the experiment were as follows: photosynthetic photon flux, $\Phi_y = 225 \pm 25 \mu\text{mol}_y \text{m}^{-2} \text{s}^{-1}$; atmospheric concentration of carbon dioxide, $c_{\text{CO}_2} = 525 \pm 125 \text{ ppm}$; air temperature, $T = 22 \pm 2 \text{ }^\circ\text{C}$; relative humidity, $h_R = 50 \pm 10\%$; NSS pH = 6.0 ± 1.0 . The photoperiod, H , was 16 h d^{-1} . Further details of the growth environment are presented in Tables S1 and Figs. S3–S5. These values were selected based on specifications¹¹ and growth system operation and were assumed not growth limiting by way of factors such as gas exchange and water transpiration. Harvests were performed at 11, 20, 25, 30, 35, 40 and 43 d_{AE}. The plants were in the process of bolting at 43 d_{AE}; as such, their data were not used. The planting density, σ_N , was normalized to 19.2 m^{-2} , and the fresh weight water fraction was assumed to be 0.95, both per their NASA reference values¹¹.

Each shelf was filled to capacity with rockwool (128 pieces), with a single seed sown in each. Nutrients were added to the reservoirs at 75% of total concentration on the day of sowing to minimize the risk of non-solubilized salts and of low DO levels that had been observed in the system 3–4 days after adding the nutrients. In general, lettuce seeds do not need nutrients to germinate, which can be expected to occur within 3–10 d. At 11 d_{AE}, the 55 largest and visually healthiest plants in each N condition were transplanted from the rockwool and the remaining 25% of nutrients were added to each reservoir (Tables S2 and S3). The non-transplanted seedlings from the deficient, normal, and excess N conditions weighed a total of 0.42 g, 0.42 g, and 0.38 g respectively, below the 20 g minimum required for the nitrogen assay. Harvested whole plants were weighed then frozen to $-80 \text{ }^\circ\text{C}$, followed by measurement of the nitrogen content by the Dumas method^{72,73}, performed commercially by Medallion Labs (Minneapolis, MN, US).

Nitrogen supply strategy. The decision to set a constant initial nitrate (NO₃⁻) concentration while varying initial ammonium (NH₄⁺) concentration in the nutrient support solution across conditions was based on several considerations. Nitrate and ammonium are the primary nitrogen forms plants uptake, with nitrate being more readily assimilated and less physiologically stressful at high concentrations. Previous studies have shown distinct plant growth responses to these forms due to their different metabolic pathways, with high ammonium levels often causing growth inhibition and stress. By setting initial nitrate constant, we ensured stable nitrogen availability, allowing us to observe the specific effects of varying ammonium levels. The experimental design aimed to mimic potential space agriculture scenarios with limited or variable

nitrogen sources, enabling us to identify optimal conditions for nitrogen use efficiency.

Parameter fitting

For each condition (normal, deficient, excess), experimental measurements of biomass and plant nitrogen content were made, and nitrogen productivity was calculated from them. The variables were experimentally measured at several instances. Let the i -th time instance in which a noisy measurement of the variables $y_{\text{exp},i}$ was made be denoted as t_i , $i = [1, \dots, n]$. Note that in general the measurements can be obtained for varying instances per variable; however, here all variables were measured for the same t_i . The L_2 norm (Euclidean norm) of the difference between the predicted output of the NP model $y_{\text{pred},i}$ and the experimental values $y_{\text{exp},i}$ can be expressed as

$$\|y_{\text{pred}} - y_{\text{exp}}\|_2^2 = \sum_{i=1}^n (y_{\text{pred},i} - y_{\text{exp},i})^2 \quad (13)$$

Parameter fitting aims to find the set of parameters that minimizes the difference between model predictions and experimental data. To achieve this, a least-squares parameter estimation problem was solved, based on the square of the Euclidean norm⁷⁴.

$$\min_{p \in P} \|y_{\text{pred}} - y_{\text{exp}}\|_2^2 \quad (14)$$

where $P \subset \mathbb{R}^{n_p}$ is the set of bounds for the parameter values, with n_p being the number of uncertain parameters. The minimization problem was solved using the SciPy package in Python, specifically with a global optimization algorithm called differential evolution⁷⁵. This is a derivative-free method that belongs in the class of evolutionary algorithms. Once a solution is found by the algorithm, the result is further refined following a few gradient-based optimization steps using the L-BFGS method⁷⁶.

Sensitivity analysis

Given a multivariate \mathcal{P} distribution for the uncertain parameters p , sensitivity analysis (SA) is a technique used to evaluate the degree to which the output of a model (or system) varies in response to variations of the input parameters, when the latter are drawn from the aforementioned distribution. SA is concerned with analyzing the statistical properties of the mapping $p \rightarrow Q(p)$, where $Q(\cdot)$ is some quantity of interest. In the absence of prior information about the statistical properties of the parameters, it was assumed that they followed a uniform distribution, i.e. $\mathcal{P} = \text{Uniform}(l, u)$, where l is a vector with the lowest values (lower bounds) that parameters p can attain, while u is the corresponding vector of upper bounds. There are two main categories of SA: (i) local sensitivity analysis (LSA) that pertains to small perturbations of the uncertain parameters and hence the corresponding “local” effect on the quantity of interest, and (ii) global sensitivity analysis (GSA) that evaluates the sensitivity of some quantity of interest over the entire distribution of the uncertain parameters. The focus was on the latter as it gave a more complete picture on the effect of uncertainty to the variation of the model predictions. More specifically, the analysis relied upon Borgonovo indices⁷⁷, denoted by \mathcal{S} , which are based on the full distribution of some quantity of interest as opposed to their statistical moments (as done with Sobol⁷⁸ indices). GSA methods generally collect samples in the form $\mathcal{D} = \{p_1, Q(p_1), \dots, p_n, Q(p_n)\}$ and perform a series of computations to yield a set of indices for each parameter which reflect how strongly they affect the QoI. As stated earlier, here the QoI Q is the integral of the biomass curve over time, hence a scalar value.

GSA generally requires a large number of samples to produce reliable results. Typically, QoIs reflect physical quantities and, hence, are associated with physical constraints. Uncertainties in model parameters can lead to non-physical predictions, such as negative biomass concentrations, resulting in negative QoI integral values. Those samples should be excluded from the sensitivity analysis. A data-driven model to classify parameter

combinations for physically meaningful predictions was used to accelerate the analysis; this model not only offers insight into the correlation of these parameters (*i.e.* emerging parameter patterns that lead to non-negative predictions), but also reinforces the sampling efficiency for the GSA. Although GSA typically requires between $\mathcal{O}(10^3)$ and $\mathcal{O}(10^4)$ samples for yielding reliable results⁷⁹, the high computational cost of obtaining these samples is a concern. The approach used aimed to generate fewer samples, on the order of $\mathcal{O}(10^2)$, followed by the use of a classifier trained on these samples to identify trajectories likely to produce physically relevant outcomes; in this case, the classifier was a neural network⁸⁰. The procedure is as follows:

1. Draw N_0 samples from the parameters distribution $\text{Uniform}(l, u), [p_1, \dots, p_{N_0}]$, and simulate the system to obtain the corresponding biomass integral values $[Q_1, \dots, Q_{N_0}]$. Only $N_0^+ \leq N_0$ samples yield positive integrals.
2. Train a classifier $\mathcal{C}(p) \rightarrow [0, 1]$ based on all of these data; the classifier returns the probability that a given parameter combination results in a physically relevant trajectory.
3. Generate N_* combinations of parameters, with $N_* \gg N_0$, and pass them to the classifier. Keep all samples for which the prediction of the classifier is higher than some threshold value (probability), typically $\mathcal{C}(p_i) \geq 0.5$. The number of kept samples is $N_*^+ \leq N_*$.
4. For those kept samples, run the NP model and obtain new data $[Q_1, \dots, Q_{N_*^+}]$. It is expected that the vast majority of the NP model simulations yield positive integrals.
5. Finally, collect all samples that result in a positive integral from step 4, as well as the initial N_0^+ samples along with their responses, and perform the Borgonovo GSA.

Data availability

All data can be freely accessed from the Github repository at <https://github.com/kmyates262/nitrogen-productivity> and from <https://zenodo.org/doi/10.5281/zenodo.10719547>.

Code availability

All code can be freely accessed from the Github repository at <https://github.com/kmyates262/nitrogen-productivity> and from <https://zenodo.org/doi/10.5281/zenodo.10719547>.

Received: 1 March 2024; Accepted: 27 August 2024;

Published online: 28 September 2024

References

1. Wheeler, R. M. Agriculture for space: people and places paving the way. *Open Agric.* **2**, 14–32 (2017).
2. Ball, J. R. & Evans Jr, C. H. Managing Risks to Astronaut Health. In *Safe Passage: Astronaut Care for Exploration Missions* (National Academies Press (US), 2001).
3. Menezes, A. A., Montague, M. G., Cumbers, J., Hogan, J. A. & Arkin, A. P. Grand challenges in space synthetic biology. *J. R. Soc. Interface* **12**, 20150803 (2015).
4. Menezes, A. A., Cumbers, J., Hogan, J. A. & Arkin, A. P. Towards synthetic biological approaches to resource utilization on space missions. *J. R. Soc. Interface* **12**, 20140715 (2015).
5. Nangle, S. N. et al. The case for biotech on Mars. *Nat. Biotechnol.* **38**, 401–407 (2020).
6. Ho, D., Makrygiorgos, G., Hill, A. & Berliner, A. J. Towards an extension of equivalent system mass for human exploration missions on Mars. *npj Microgravity* **8**, 30 (2022).
7. Berliner, A. J. et al. Space bioprocess engineering on the horizon. *Commun. Eng.* **1**, 13 (2022).
8. Cannon, K. M. & Britt, D. T. Feeding one million people on Mars. *New Space* **7**, 245–254 (2019).
9. McNulty, M. J. et al. Molecular pharming to support human life on the moon, mars, and beyond. *Crit. Rev. Biotechnol.* **0**, 1–16 (2021).
10. Talbert, T. & Green, M. Space Technology Grand Challenges. https://www.nasa.gov/offices/oct/strategic_integration/grand_challenges_detail.html# (National Aeronautics and Space Administration, 2010).
11. Ewert, M. K. & Keener, J. F. Life support baseline values and assumptions document. Tech. Rep., NASA, Washington DC (2022). https://ntrs.nasa.gov/api/citations/20210024855/downloads/BVAD_2.15.22-final.pdf.
12. Jaworske, D. A. & Myers, J. G. Pharmaceuticals exposed to the space environment: Problems and prospects. Tech. Rep. (National Aeronautics and Space Administration, Glenn Research Center, 2016). <https://ntrs.nasa.gov/citations/20160003684>.
13. Maxwell, S. & Drysdale, A. E. Assessment of Waste Processing Technologies for 3 Missions (SAE International, 2001).
14. Fisher, J. W. et al. Waste management technology and the drivers for space missions. *SAE Int. J. Aerosp.* **1**, 207–227 (2008).
15. Zabel, P. Influence of crop cultivation conditions on space greenhouse equivalent system mass. *CEAS Space J.* <https://doi.org/10.1007/s12567-020-00317-5> (2020).
16. Berliner, A. J. et al. Towards a biomanufacturing on mars. *Front. Astron. Space Sci.* **8**, 120 (2021).
17. Edeen, M. A., Dominick, J. S., Barta, D. J. & Packham, N. J. C. *Control Of Air Revitalization Using Plants: Results Of The Early Human Testing Initiative Phase I Test.* 781–795 (SAE International, 1996).
18. Godia, F. et al. MELISSA: a loop of interconnected bioreactors to develop life support in space. *J. Biotechnol.* **99**, 319–330 (2002).
19. Frossard, E. et al. Recycling nutrients from organic waste for growing higher plants in the Micro Ecological Life Support System Alternative (MELISSA) loop during long-term space missions. *Life Sci. Space Res.* **40**, 176–185 (2024).
20. Jones, H., Cavazzoni, J. & Keas, P. *Crop Models For Varying Environmental Conditions* (SAE Technical Paper, 2002).
21. Monje, O. *Predicting Transpiration rates of Hydroponically-Grown Plant Communities in Controlled Environments* (Utah State University, 1998).
22. Jones, H. & Cavazzoni, J. *Top-level Crop Models For Advanced Life Support Analysis.* Tech. Rep., SAE Technical Paper (2000). ISBN: 0148-7191.
23. Hawkesford, M. et al. *arschner's Mineral Nutrition Of Higher Plants.* 135–189 (Elsevier, 2012).
24. Evans, J. R. Photosynthesis and nitrogen relationships in leaves of C3 plants. *Oecologia* **78**, 9–19 (1989).
25. McNulty, M. J. et al. Evaluating the cost of pharmaceutical purification for a long-duration space exploration medical foundry. *Front. Microbiol.* **12**, 3056 (2021).
26. Langenfeld, N. J. et al. Optimizing nitrogen fixation and recycling for food production in regenerative life support systems. *Front. Astron. Space Sci.* **8**, 699688 (2021).
27. Ågren, G. I. Theory for growth of plants derived from the nitrogen productivity concept. *Physiol. Plant.* **64**, 17–28 (1985).
28. Verkroost, A. W. M. & Wassen, M. J. A simple model for nitrogen-limited plant growth and nitrogen allocation. *Ann. Bot.* **96**, 871–876 (2005).
29. Weih, M., Asplund, L. & Bergkvist, G. Assessment of nutrient use in annual and perennial crops: a functional concept for analyzing nitrogen use efficiency. *Plant Soil* **339**, 513–520 (2011).
30. Congreves, K. A. et al. Nitrogen use efficiency definitions of today and tomorrow. *Front. Plant Sci.* **12**, 637108 (2021).
31. Yan, Q., Duan, Z., Mao, J., Li, X. & Dong, F. Effects of root-zone temperature and N, P, and K supplies on nutrient uptake of cucumber (*Cucumis sativus* L.) seedlings in hydroponics. *Soil Sci. Plant Nutr.* **58**, 707–717 (2012).
32. Xiang, J. et al. Improvement in nitrogen availability, nitrogen uptake and growth of aerobic rice following soil acidification. *Soil Sci. Plant Nutr.* **55**, 705–714 (2009).
33. Hunt, R. *Plant Growth Curves: The Functional Approach To Plant Growth Analysis* (Cambridge University Press, Cambridge, 1991).

34. Naraoka, H. et al. Soluble organic molecules in samples of the carbonaceous asteroid (162173) Ryugu. *Science* **379**, eabn9033 (2023).
35. Glavin, D. P. et al. Extraterrestrial amino acids and L-enantiomeric excesses in the CM 2 carbonaceous chondrites Aguas Zarcas and Murchison. *Meteorit. Planet. Sci.* **56**, 148–173 (2021).
36. Anderson, T., Martini, M., De Villiers, D. & Timmons, M. Growth and tissue elemental composition response of butterhead lettuce (*Lactuca sativa*, cv. Flandria) to hydroponic conditions at different pH and alkalinity. *Horticulturae* **3**, 41 (2017).
37. Gent, M. Effect of temperature on composition of hydroponic lettuce. *Acta Hortic.* https://www.actahort.org/books/1123/1123_13.htm (2016).
38. Vinocur, B. & Altman, A. Recent advances in engineering plant tolerance to abiotic stress: achievements and limitations. *Curr. Opin. Biotechnol.* **16**, 123–132 (2005).
39. Mohanta, T. K., Mishra, A. K., Mohanta, Y. K. & Al-Harrasi, A. Space breeding: the next-generation crops. *Front. Plant Sci.* <https://www.frontiersin.org/articles/10.3389/fpls.2021.771985> (2021).
40. Khodadad, C. L. M. et al. Microbiological and nutritional analysis of lettuce crops grown on the international space station. *Front. Plant Sci.* **11**, 199 (2020).
41. Burgess, A. J., Pranggono, R., Escribà-Gelonch, M. & Hessel, V. Biofortification for space farming: maximising nutrients using lettuce as a model plant. *Future Foods* **9**, 100317 (2024).
42. Blackman, V. H. The compound interest law and plant growth. *Ann. Bot.* **os-33**, 353–360 (1919).
43. Simonne, A. H., Simonne, E. H., Eitenmiller, R. R., Mills, H. A. & Cresman, C. P. Could the dumas method replace the kjeldahl digestion for nitrogen and crude protein determinations in foods? *J. Sci. Food Agric.* **73**, 39–45 (1997).
44. Olsen, C. The significance of concentration for the rate of ion absorption by higher plants in water culture. *Physiol. Plant.* **3**, 152–164 (1950).
45. Makrygiorgos, G., Maggioni, G. M. & Mesbah, A. Surrogate modeling for fast uncertainty quantification: Application to 2D population balance models. *Comput. Chem. Eng.* **138**, 106814 (2020).
46. Makrygiorgos, G., Sen Gupta, S., Menezes, A. & Mesbah, A. Fast Probabilistic Uncertainty Quantification and Sensitivity Analysis of a Mars Life Support System Model. *IFAC-PapersOnLine* (2020).
47. Makrygiorgos, G. et al. Data-driven flow-map models for data-efficient discovery of dynamics and fast uncertainty quantification of biological and biochemical systems. *Biotechnol. Bioeng.* **120**, 803–818 (2023).
48. Razaq, M., Zhang, P., Shen, H.-I & Salahuddin. Influence of nitrogen and phosphorus on the growth and root morphology of *Acer mono*. *PLoS ONE* **12**, 1–13 (2017).
49. Langenfeld, N. J., Pinto, D. F., Faust, J. E., Heins, R. & Bugbee, B. Principles of nutrient and water management for indoor agriculture. *Sustainability* **14**, 10204 (2022).
50. Cotrufo, M. F., Ineson, P. & Scott, A. Elevated CO₂ reduces the nitrogen concentration of plant tissues. *Glob. Change Biol.* **4**, 43–54 (1998).
51. Aerts, R. & Chapin III, F. S. The mineral nutrition of wild plants revisited: a re-evaluation of processes and patterns. *Adv. Ecol. Res.* **30**, 1–67 (1999).
52. Morgan, J. & Connolly, E. Plant-soil interactions: nutrient uptake. *Nat. Educ. Knowl.* **4**, 2 (2013).
53. Seginer, I. A dynamic model for nitrogen-stressed lettuce. *Ann. Bot.* **91**, 623–635 (2003).
54. Seufert, V., Granath, G. & Müller, C. A meta-analysis of crop response patterns to nitrogen limitation for improved model representation. *PLoS ONE* **14**, e0223508 (2019).
55. Lawlor, D. W., Lemaire, G. & Gastal, F. *Plant Nitrogen*. (eds. Lea, P. J. & Morot-Gaudry, J.-F.) 343–367 (Springer Berlin Heidelberg, 2001).
56. Lei, C. & Engeseth, N. J. Comparison of growth characteristics, functional qualities, and texture of hydroponically grown and soil-grown lettuce. *LWT* **150**, 111931 (2021).
57. White, P. J. *Marschner's Mineral Nutrition of Higher Plants*, 7–47 (Elsevier, 2012).
58. Abd-Elmoniem, E., Abou-Hadid, A., El-Shinawy, M., El-Beltagy, A. & Eissa, A. *Acta Horticulturae*, 47–52 (International Society for Horticultural Science (ISHS), Leuven, Belgium, 1996).
59. Mitchell, C. A., Chun, C., Brandt, W. E. & Nielsen, S. S. Environmental modification of yield and nutrient composition Of 'Waldmann's Green' leaf lettuce. *J. Food Qual.* **20**, 73–80 (1997).
60. Xu, G., Fan, X. & Miller, A. J. Plant nitrogen assimilation and use efficiency. *Annu. Rev. Plant Biol.* **63**, 153–182 (2012).
61. Yao, X., Nie, J., Bai, R. & Sui, X. Amino acid transporters in plants: identification and function. *Plants* **9**, 972 (2020).
62. Paine, C. E. T. et al. How to fit nonlinear plant growth models and calculate growth rates: an update for ecologists. *Methods Ecol. Evol.* **3**, 245–256 (2012).
63. Kirkby, E. A. & Mengel, K. Ionic balance in different tissues of the tomato plant in relation to nitrate, urea, or ammonium nutrition. *Plant Physiol.* **42**, 6–14 (1967).
64. Padhan, B. K., Sathee, L., Kumar, S., Chinnusamy, V. & Kumar, A. Variation in nitrogen partitioning and reproductive stage nitrogen remobilization determines nitrogen grain production efficiency (nueg) in diverse rice genotypes under varying nitrogen supply. *Front. Plant Sci.* <https://www.frontiersin.org/articles/10.3389/fpls.2023.1093581> (2023).
65. Unkovich, M., Cadisch, G. & Research, A. C. f. I. A. (eds.) *Measuring Plant-Associated Nitrogen Fixation in Agricultural Systems*. No. 136 in ACIAR Monograph Series (ACIAR, Canberra, 2008).
66. Haslemore, R. M., Warrington, I. J. & Roughton, P. G. Influence of drying method and post-harvest conditions on total nitrogen, soluble sugar, and starch levels in plant tissue. *N. Z. J. Agric. Res.* **23**, 355–359 (1980).
67. Dhaliwal, G. S., Gupta, N., Kukal, S. S. & Singh, M. Standardization of automated vario EL III CHNS analyzer for total carbon and nitrogen determination in plants. *Commun. Soil Sci. Plant Anal.* **45**, 1316–1324 (2014).
68. Mao, H., Gao, H., Zhang, X. & Kumi, F. Nondestructive measurement of total nitrogen in lettuce by integrating spectroscopy and computer vision. *Sci. Hortic.* **184**, 1–7 (2015).
69. Heller, S. R. & McNaught, A. D. The IUPAC international chemical identifier (InChI). *Chem. Int.* **31**, 7 (2009).
70. Cohen, E. R. & Giacomo, P. *Symbols, Units, Nomenclature And Fundamental Constants In Physics* (North-Holland Amsterdam, 1987).
71. Kempers, A. J. & Kok, C. J. Re-examination of the determination of ammonium as the indophenol blue complex using salicylate. *Anal. Chim. Acta* **221**, 147–155 (1989).
72. Horwitz, W. & Latimer, G. W. *Official Methods of Analysis of AOAC International*, 18th edn (AOAC International Gaithersburg, Md., Gaithersburg, Md., 2005).
73. AACC International. Method 46-30.01. Crude protein-combustion method. *Approved Methods Of Analysis* (AACC International St. Paul, 1999).
74. James, G., Witten, D., Hastie, T. & Tibshirani, R. *An introduction to statistical learning: with applications in R*. Springer texts in statistics (Springer, 2017), corrected at 8th printing edn.
75. Zelinka, I., Snášel, V. & Abraham, A. (eds.) *Handbook of Optimization: From Classical to Modern Approach*, vol. 38 of *Intelligent Systems Reference Library* (Springer Berlin Heidelberg, 2013).
76. Zhu, C., Byrd, R. H., Lu, P. & Nocedal, J. Algorithm 778: L-BFGS-B: fortran subroutines for large-scale bound-constrained optimization. *ACM Trans. Math. Softw.* **23**, 550–560 (1997).
77. Borgonovo, E. & Plischke, E. Sensitivity analysis: a review of recent advances. *Eur. J. Oper. Res.* **248**, 869–887 (2016).

78. Nossent, J., Elsen, P. & Bauwens, W. Sobol' sensitivity analysis of a complex environmental model. *Environ. Model. Softw.* **26**, 1515–1525 (2011).
79. Sudret, B. Global sensitivity analysis using polynomial chaos expansions. *Reliab. Eng. Syst. Saf.* **93**, 964–979 (2008). ISBN: 0951-8320.
80. Goodfellow, I., Bengio, Y. & Courville, A. *Deep Learning* (MIT Press, 2016).
81. Epstein, E. *Plant Biochemistry*, 438–466 (Elsevier, 1965).
82. Plank, C. O. & Kissel, D. E. *AESL Plant Analysis Handbook* (University of Georgia College of Agricultural & Environmental Sciences, 2023).
83. Sedberry, J. E., Amacher, M. C., Bligh, D. P. & Curtis, O. D. *Plant-Tissue Analysis as a Diagnostic Aid in Crop Production. Bulletin 783* (Louisiana State University Agricultural Center, 1987).

Acknowledgements

This work is supported by a grant from the National Aeronautics and Space Administration (NASA), award number NNX17AJ31G. Any conclusions, recommendations, or opinions expressed in this material are those of the authors and do not necessarily reflect the views of NASA. Vegetable icons made by Freepik from www.flaticon.com.

Author contributions

The manuscript was conceived and organized by K.Y. and A.J.B. which oversight by A.P.A., S.N., and K.A.M. Crop cultivation was performed by K.Y. with help from Zea Biosciences, Inc. members C.K., D.M., C.L., and J.W. Data analyses were led by G.M. with help from F.K. and supervised by A.M. Specific agriculture methods and insight was provided by M.J.M., I.K., P.K., and B.B. All authors developed, wrote, and edited the manuscript led by K.Y.

Competing interests

The authors K.Y., A.J.B., G.M., F.K., M.J.M., I.K., P.K., A.M., A.P.A., S.N., and K.A.M. declare no competing interests. Authors C.K., D.M., C.L., and J.W.

are employees of Zea Biosciences, a biologics platform company with a financial interest in identifying, producing, and growing high-potency drugs.

Additional information

Supplementary information The online version contains supplementary material available at <https://doi.org/10.1038/s41526-024-00428-x>.

Correspondence and requests for materials should be addressed to Kevin Yates or Aaron J. Berliner.

Reprints and permissions information is available at <http://www.nature.com/reprints>

Publisher's note Springer Nature remains neutral with regard to jurisdictional claims in published maps and institutional affiliations.

Open Access This article is licensed under a Creative Commons Attribution 4.0 International License, which permits use, sharing, adaptation, distribution and reproduction in any medium or format, as long as you give appropriate credit to the original author(s) and the source, provide a link to the Creative Commons licence, and indicate if changes were made. The images or other third party material in this article are included in the article's Creative Commons licence, unless indicated otherwise in a credit line to the material. If material is not included in the article's Creative Commons licence and your intended use is not permitted by statutory regulation or exceeds the permitted use, you will need to obtain permission directly from the copyright holder. To view a copy of this licence, visit <http://creativecommons.org/licenses/by/4.0/>.

© The Author(s) 2024