



Cite this: DOI: 10.1039/c4dt02865a

Influence of the binding of reduced NAMI-A to human serum albumin on the pharmacokinetics and biological activity

V. Novohradský,^{a,b} A. Bergamo,^c M. Cocchiello,^c J. Zajac,^{a,b} V. Brabec,^a G. Mestroni^c and G. Sava^{*c,d}

NAMI-A is a ruthenium-based drug endowed with the unique property of selectively targeting solid tumour metastases. Although two clinical studies had already been completed, limited information exists on the behavior of NAMI-A after injection into the bloodstream. PK data in humans informs us of a rather low free drug concentration, of a relatively high half-life time of elimination and of a linear relationship between the administered dose and the corresponding AUC for up to toxic doses. In the present study, we examined the chemical kinetics of albumin binding with or without the presence of reducing agents, and we evaluated how these chemical aspects might influence the *in vivo* PK and the *in vitro* ability of NAMI-A to inhibit cell migration, which is a bona fide, rapid and easy way to suggest anti-metastatic properties. The experimental data support the binding of NAMI-A to serum albumin. The reaction is facilitated when the drug is in its reduced form and, in agreement with already reported data, the adduct formed with albumin maintains the biological activity of the ruthenium drug. The formation of the adduct is favored by low ratios of NAMI-A : HSA and by the reduction of the drug with ascorbic acid. The difference in *in vivo* PK and the faster binding to albumin of the reduced NAMI-A seem to suggest that the drug is not rapidly reduced immediately upon injection, even at low doses. Most probably, cell and protein binding prevail over the reduction of the drug. This observation supports the thesis that the reduction of the drug before injection must be considered relevant for the pharmacological activity of NAMI-A against tumour metastases.

Received 17th September 2014,

Accepted 14th November 2014

DOI: 10.1039/c4dt02865a

www.rsc.org/dalton

Introduction

The development of metal based compounds as drugs for the treatment of cancer, which initially focused almost only on platinum, is today extended to other transition metals, among which ruthenium appears to be one of the most attractive candidates.^{1–3} There are objective and opportunistic reasons to stress the role of ruthenium for metal-based anticancer drugs. The main reason is related to the generally more tolerated toxicity of the ruthenium compounds compared to the classical platinum complexes when they are tested in living beings.^{4–7} The opportunistic reason is that among the many metal compounds synthesized and studied in more than 50 years, after

the discovery of cisplatin, only two ruthenium complexes, namely, imidazolium *trans*-imidazoledimethylsulphoxide-tetrachlororuthenate (NAMI-A) and sodium *trans*-bis-indazole-tetrachlororuthenate (KP1339), have moved to clinical studies in humans.^{8,9} NAMI-A is attractive because of its ability to target solid tumor metastases rather than to exert a non-selective tumor toxicity.^{4,10–12} In fact, tumor metastases represent the main target of cancer chemotherapy and their eradication is the only way to cure the disease.^{13–16} NAMI-A, although with a still only-presumed target and mechanism of action,^{17–20} represents a metal-based compound endowed with innovative properties, matching a currently unmet need of oncological treatments. If there is very little doubt about the metastasis selectivity,^{10,12,21} limited information exists on the behavior of NAMI-A once injected into the bloodstream. PK data in humans informs us of a rather low free drug concentration, of a relatively high half-life time of elimination and of a linear relationship between the administered dose and the corresponding AUC up to toxic doses.⁸ However, there are at least two unanswered questions: (a) what is the preferred oxidation state of the metal center with which NAMI-A binds to plasma proteins? and (b) is the albumin-adduct endowed with the same biological activities of free NAMI-A? Both these questions

^aInstitute of Biophysics, Academy of Sciences of the Czech Republic, v.v.i., Kralovopolska 135, CZ-61265 Brno, Czech Republic. Fax: +420 541240499; Tel: +420 541517148

^bDepartment of Biophysics, Faculty of Science, Palacky University, 17.Listopadu 12, CZ-77146 Olomouc, Czech Republic

^cCallerio Foundation Onlus, via A. Fleming 22, 34127-Trieste, Italy.

E-mail: gsava@units.it

^dDepartment of Life Sciences, University of Trieste, via A. Fleming 22, 34127-Trieste, Italy

relate to the chemical behavior of NAMI-A in biological solutions,^{22–24} as well as to the role of the biological reducing agents such as ascorbic acid or glutathione, which are present in circulation.²⁵ Since the species responsible for the effects on tumor metastases is still unknown, any further information on reduction, which was shown to be responsible for the speciation of the compound in solution,^{26,27} and albumin binding, which was recently demonstrated to markedly influence the maintenance of the original ligands in the coordination sphere,^{27–30} would help us to understand the nature of the active species of NAMI-A and hopefully suggest the type of structure modification that is required to increase the ratio between activity and toxicity. We therefore thought it worthwhile to study the chemical kinetics of albumin binding with or without the presence of reducing agents, which are present in the bloodstream and to evaluate how these chemical aspects influence the *in vivo* PK and the *in vitro* ability of NAMI-A to inhibit cell migration, which is a bona fide, rapid and easy way to suggest anti-metastatic properties.

Materials and methods

Chemicals

Imidazolium *trans*-imidazole(dimethylsulfoxide)tetrachlororuthenateImH[*trans*-RuCl₄(DMSO)Im] (NAMI-A) was synthesized by Serichim (Torviscosa, Italy) according to already described procedures.³¹ All reagents were purchased from Sigma-Aldrich (St. Louis, MO, USA) unless otherwise indicated.

Preparation of stock solutions

NAMI-A, HSA and ascorbic acid were dissolved immediately before use in DPBS (Dulbecco's phosphate buffered saline, pH = 7.4), to the final concentrations of 0.5, 10 and 20 mM, respectively.

Spectrophotometric experiments

Spectrophotometric data were obtained using Jasco V-550 at the range of wavelengths from 700 nm to 300 nm, with a scanning speed set at 200 nm min⁻¹, band with 1.0 nm and data pitch 1.0 nm. Spectra were measured with the interval of 5 min. Unless stated otherwise, the spectra were measured at 25 °C with a final volume of 3 ml. Temperature of the reaction solution was monitored and controlled using a Peltier control accessory, and spectra were processed with GraphPad Prism 4 software.

Interaction with human serum albumin

100 μM NAMI-A was exposed to HSA at ratios of 4 : 1, 2 : 1, 1 : 1 and 0.25 : 1 in DPBS under constant temperature of 25 °C, pH 7.4. Note that NAMI-A was added to solutions of HSA and the reaction was monitored up to 145 min.

Interaction of NAMI-A with HSA in solution upon reduction by ascorbic acid

NAMI-A at the concentration of 400 μM was reduced by 100, 50 and 2.5 μM of ascorbic acid in the presence of 100 μM of HSA.

NAMI-A and ascorbic acid were added together to the solution of HSA, and the reaction was carried out at 25 °C, pH 7.4, with a final volume of 3 ml.

In vitro studies

Tumour cell line. MDA-MB-231 human highly invasive breast cancer cell line was kindly supplied by Dr P. Spessotto (Cro, Aviano, Italy) and maintained in Dulbecco's modified Eagle's medium supplemented with 10% FBS (Foetal Bovine Serum, Gibco, Invitrogen™, Paisley, Scotland, UK), 2 mM L-glutamine, 1% non-essential amino acids and 100 IU ml⁻¹ penicillin and 100 μg ml⁻¹ streptomycin (all the reagents in this paragraph were from EuroClone®, Devon, UK).

The cell line was kept in an incubator with 5% CO₂ and 100% relative humidity at 37 °C. Cells from a confluent monolayer were removed from flasks by a trypsin-EDTA solution. Cell viability was determined by the trypan blue dye exclusion test. For experimental purposes, cells were sown in multi-well cell culture clusters.

Re-adhesion assay. To study the effect of the treatments on the cell ability to re-adhere to a growth substrate, cells were sown in complete medium in cell culture flasks and grown for 2 days at 37 °C 5% CO₂. Then, the complete medium was replaced with serum-starved medium containing 0.1% w/v BSA for 24 h before treatment with NAMI-A (1 ÷ 100 μM), ascorbic acid (0.5 ÷ 100 μM), HSA (25 ÷ 400 μM) or with their combination, at the ratios reported in the legend of the respective figures, in DPBS for 1 h at 37 °C 5% CO₂. At the end of the treatment, cells were removed from flasks by a trypsin-EDTA solution, collected by centrifugation, re-suspended in serum-starved medium supplemented with 0.1% w/v BSA and maintained for 30 min at room temperature to allow surface receptor reconstitution. The cells were then seeded at a density of 1 × 10⁴ cells in 0.1 ml per well on 96-well plastic plates. Cells were left to adhere for 30 min at 37 °C 5% CO₂, and then the medium containing the non-adhered cells was removed and wells were gently washed with Ca²⁺Mg²⁺ free-DPBS. Cells which in 30 min have adhered to the substrate were detected by the sulforhodamine B (SRB) test.

Sulforhodamine B assay. Adherent cells were detected with the SRB test described by Skehan *et al.*³² Briefly, adherent cells were fixed with 10% v/v cold trichloroacetic acid (TCA) at 4 °C for 1 h. After fixation, TCA was discarded and wells washed five times with distilled water and air-dried. SRB solution (0.4% w/v in 1% acetic acid) was added to the wells for 30 min at room temperature (RT). Unbound SRB was removed by washing three times with 1% acetic acid. Plates were air-dried, then bound stain was dissolved with un-buffered 10 mM Tris base (tris-hydroxymethyl-aminomethane) at pH 10.5 and the absorbance units were read at 570 nm with a spectrophotometer (SpectraCount, Packard, Meriden, CT, USA).

In vivo studies

Animals. Experiments on animals were carried out on 10 weeks old ICR (CD-1) male mice, according to the guidelines in force in Italy (DDL 116 of 21/2/1992) and in compliance

with the Guide for Care and Use of Laboratory Animals, Department of Health and Human Services Publication no. (NIH) 86-23, Bethesda, MD, National Institutes of Health, 1985. The average animal weight was 39.0 ± 3.5 g (range: 33.0–48.4 g).

In vivo treatments. Compounds were administered i.v. through the lateral tail vein. NAMI-A was applied at a dose of 50 mg kg^{-1} body weight and dissolved in sterile DPBS immediately before use in an appropriate volume in order to inject 0.05 ml/10 g body weight. For the calculation of the appropriate dose for each animal, the mice were weighted one day (24 h) before the treatment. NAMI-A and the reduced form of NAMI-A were incubated in DPBS and/or in DPBS with ascorbic acid for 5 min at 37°C before the administration. The molar ratio of NAMI-A to ascorbic acid was 1:1. Intravenous application to the tail vein was performed after the vasodilation with hot water. Animals were anesthetized with i.p. injection of Zoletil (tiletamine/zolazepam) 15 mg kg^{-1} and Xilor (xylazine) 5 mg kg^{-1} . Samples were collected at 0, 10, 20, 40 minutes, as well as 1, 2, 4 and 24 h, from three mice per group at each time point.

Samples collection. The blood withdrawal was performed by heart puncture on anesthetized animals. Plasma was separated with centrifugation at $2000g$ for 3 min at room temperature using heparin (50 U ml^{-1} of blood) as an anticoagulation agent. Urine was collected by bladder puncture from animals killed by cervical dislocation and opened by surgery. Liquid samples were immediately frozen in the liquid nitrogen and stored at -80°C until analysis. Fragments from the lungs, liver and kidney were carefully removed, weighted, and immediately frozen in liquid nitrogen. Samples were stored at -80°C until further processing.

FAAS analysis – sample processing. Liquid samples were digested with tetramethylammoniumhydroxide (TMAH) at 25% in Milli-Q water, with a 1:5 sample:TMAH ratio at room temperature, in closed Nalgene cryovials (Nalge Company, Rochester, NY, USA) and under continuous agitation for at least 24 h, according to a procedure adapted from that described by Tamura *et al.*³³ The solid organ samples were firstly heated in an oven at 105°C until completely dried. The organ fragments were then completely dissolved in closed Nalgene cryovials by the addition of 0.5 ml of 25% TMAH in water, at room temperature and under continuous agitation, for at least 24 h. When the digestion occurred, the final volume was adjusted to 1 ml with Milli-Q water.

FAAS measurements. Ruthenium concentration in plasma samples was measured using a graphite furnace atomic absorption spectrometer, model SpectrAA-220Z, supplied with GTA 110Z, an autosampler PSD 100 and a specific ruthenium hollow cathode emission lamp (all Agilent, Mulgrave, VIC, Australia). Ruthenium concentration in urine and organs was measured using an analogue instrumentation composed of an AA240Z Zeeman atomic absorption spectrometer equipped with a GTA 120 graphite tube atomizer, an autosampler PSD 110 and a specific ruthenium hollow cathode emission lamp (all Agilent, Mulgrave, VIC, Australia). The lower and higher

limits of quantification were set at the levels corresponding to the lower and higher standard concentration, *i.e.* 20 and 100 ng of ruthenium per mL, respectively. The limit of detection of 10 ng of ruthenium per mL was estimated according to the EURACHEM guide (<http://www.eurachem.org/>). The quantification of ruthenium was carried out in 10 μl samples at 349.9 nm with an atomizing temperature of 2600°C . Argon was used as purge gas at a flow rate of 3 l min^{-1} . Before each analysis session, a five point calibration curve was traced using ruthenium standard, $992 \mu\text{g ml}^{-1}$.

Statistical analysis

Results obtained were processed using GraphPadInStat software and presented as mean \pm standard deviation. The group means were compared using a One-Way Analysis of Variance (ANOVA) and Tukey-Kramer Multiple Comparisons Test and considered significant when $p < 0.05$.

Results and discussion

The results of the present investigation will be presented and discussed in light of the tests performed on humans in the phase I trial for dose and toxicity finding⁸ and for the pharmacological effects in combination with gemcitabine in a phase I/II study in patients with NSCLC.³⁴

A number of papers have discussed the role of albumin in the activity of NAMI-A and its influence on the chemical behavior in solution,^{27,29,30,35–37} as well as the role of adducts formed by compounds with different metal centers with other macromolecules (*i.e.* Pt with RNA³⁸). When NAMI-A is injected intravenously in patients by slow infusions, at doses of $300\text{--}450 \text{ mg m}^{-2}$ [corresponding to about $530\text{--}780 \text{ mg NAMI-A/patient}$ (about $1.1\text{--}1.7 \times 10^{-3}$ total moles per patient)] (see the phase I/II in combination with gemcitabine³⁴), the expected NAMI-A:HSA ratio at the site of contact, *e.g.* in the vein in which the catheter for injection is positioned, should be about 3.5–5.2 (estimated HSA in blood = $0.65 \times 10^{-3} \text{ M}$). In fact, with a rate of infusion of 2.8 ml min^{-1} (500 ml in 3 h), NAMI-A gets into the vein at a molar concentration of $2.3\text{--}3.4 \times 10^{-3} \text{ M}$, respectively, at the doses of 300 and 450 mg m^{-2} . However, the subsequent dilution of NAMI-A in the blood compartment (estimating a volume of serum of about 3 l), might reduce this ratio to about 0.58–0.87.

Effects of human serum albumin

Fig. 1 show the rate of transformation of NAMI-A in DPBS (pH = 7.4) at 25°C , evidencing the loss of the peaks of intact NAMI-A at 390 nm and that of the hydroxo derivative at 345 nm with the formation of further degradation species at wavelengths lower than those explored here. The study of the interactions between NAMI-A and human serum albumin reported in Fig. 2 suggests that with ratios of NAMI-A:HSA from 4 to 0.25, the rate of the above reactions is progressively increased: at the ratio NAMI-A:HSA = 1, they are markedly accelerated (Fig. 2, lower panel, left), whereas at the ratio =

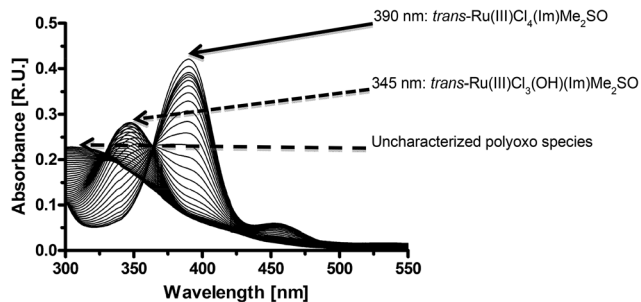


Fig. 1 Spectrophotometric pattern of the chemical transformation of NAMI-A. 400 μM NAMI-A were monitored up to 145 min. Medium: Dulbecco's phosphate buffered saline (DPBS, pH 7.4), temperature: 25 $^{\circ}\text{C}$, spectra range: from 700 to 300 nm, scanning speed: 200 nm min^{-1} , band: 1.0 nm, data pitch: 1.0 nm, interval of measurements: 5 min, volume: 3 ml.

0.25 (Fig. 2, lower panel, right), the transformation of NAMI-A and the formation of the adduct with albumin goes to completion in a very short time.

The examination of the pharmacokinetic parameters of NAMI-A in the patients confirmed high NAMI-A binding to the plasma proteins with almost 98%–99% of the drug found in the whole plasma and with only 1%–2% or less in the protein free plasma (ultra-filterable plasma) at any of the dosages tested from 2.4 to 600 mg m^{-2} .^{28,34} Interestingly, the peak concentration of drug in the plasma, at the end of the infusion, accounts for about 30%–40% of the administered dose, inde-

pendent of the dose-level used. Similarly, the decay of blood concentration of the drug, due to kidney elimination, is linear with the administered dose and accounts for the loss of about 60%–70% of the drug.^{8,34} From the results of Fig. 2, one should expect that the use of ratios between NAMI-A and HSA in favor of the protein (for example, those expected at the doses from 2.4 to 78.8 mg m^{-2} , corresponding to ratios of NAMI-A : HSA from 0.03 to 0.89) would favor the formation of the adduct in a relatively short time, leading to PK parameters different than those observed at doses of NAMI-A (for example 300–600 mg m^{-2}) corresponding to drug concentrations at the site of injection higher than that of serum albumin. On the contrary, the perfectly linear PK found between 2.4 and 600 mg m^{-2} suggests that the *in vivo* behavior of the drug is different than that expected from the present study of NAMI-A interactions with HSA performed *in vitro*. Indeed, one realistic hypothesis is that the drug, once in the blood, undergoes a number of chemical modifications and all the resulting compounds can easily react with the plasma proteins as illustrated in Scheme 1.

Effects of reduction of the metal center

In the presence of ascorbic acid in NAMI-A:ascorbic acid ratios of 1:1, 2:1 and 40:1, the ruthenium drug is quite rapidly reduced (see Scheme 2). Reduction of NAMI-A should prevent the formation of inactive, probably toxic aggregates in favor of the “active” species.^{21,25,26} Correspondingly, when

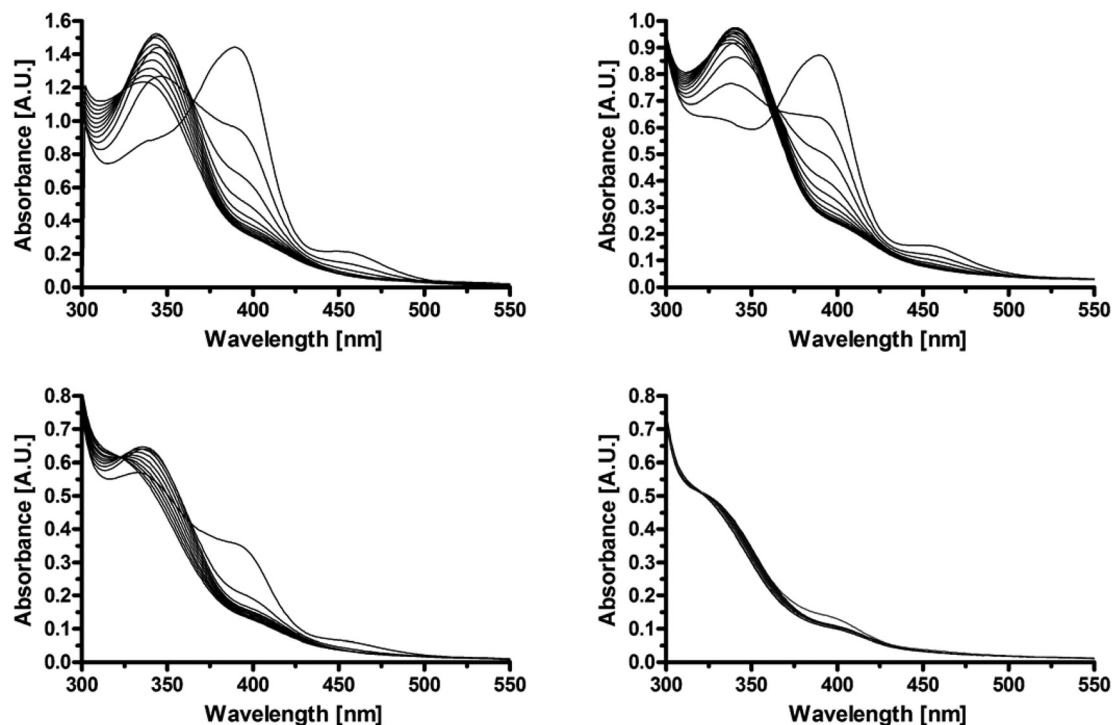
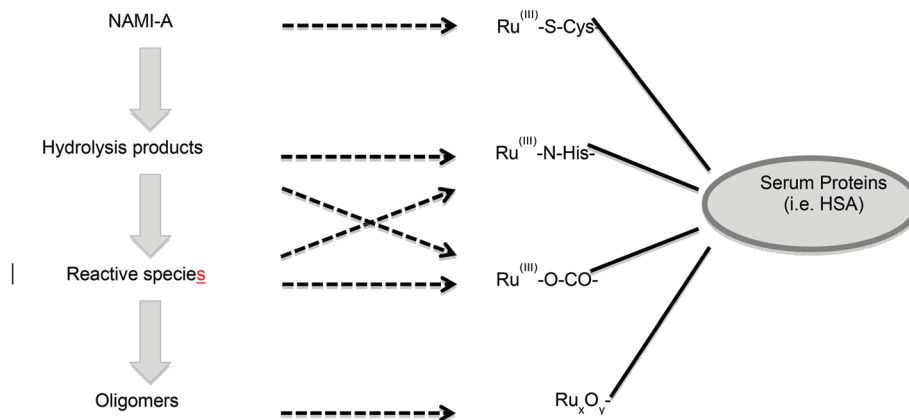
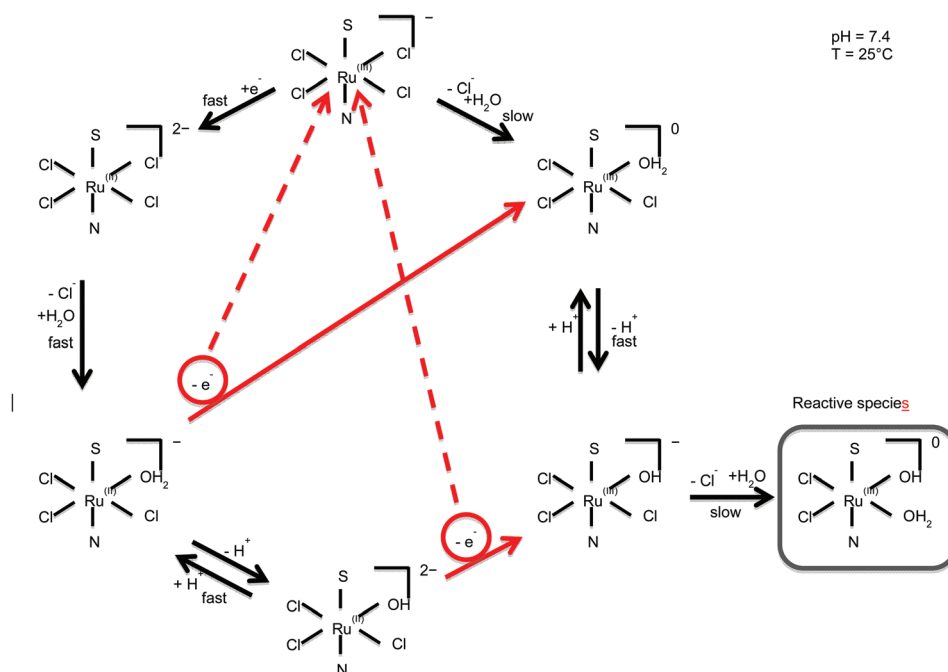


Fig. 2 Effects of human serum albumin (HSA) on the chemical transformation of NAMI-A. 100 μM NAMI-A were exposed to different concentrations of HSA and the reaction was monitored up to 145 min. NAMI-A : HAS ratios of 4 : 1 (upper panel, left), 2 : 1 (upper panel, right), 1 : 1 (lower panel, left) and 0.25 : 1 (lower panel, right). Medium: DPBS (pH 7.4), temperature: 25 $^{\circ}\text{C}$, spectra range: from 700 to 300 nm, scanning speed: 200 nm min^{-1} , band: 1.0 nm, data pitch: 1.0 nm, interval of measurements: 5 min, volume: 3 ml.



Modified from: Webb and Walsby, 2001; Liu et al., 2010; Levina et al., 2013

Scheme 1 Probable chemical modifications occurring on NAMI-A after intravenous bolus injection and binding to serum proteins. Modified from: Webb and Walsby (2011);²⁷ Liu et al. (2010);³⁰ Levina et al. (2013).³⁷



Scheme 2 Chemical modifications of NAMI-A in solution at pH 7.4 at 25 °C, leading to the formation of the reactive species.

NAMI-A was reduced before injection into tumor bearing animals, the drug increased the activity against metastases and significantly reduced its toxicity to the host.²⁶ Fig. 3 shows that the reduction of Ru^{3+} to Ru^{2+} facilitates the formation of adducts with HSA as a function of the NAMI-A: Ascorbic acid ratio. Interestingly, when only “traces” of the reducing agent are used (ratio of NAMI-A: Ascorbic acid is 1:0.025), the binding to albumin and the rate of chloride hydrolysis are markedly modified (Fig. 3, middle panel). Considering that human blood may contain $0.1\text{--}3.5 \times 10^{-5}$ M ascorbic acid and other reducing agents such as glutathione ($0.7\text{--}2 \times 10^{-3}$ M), we should expect that the drug finds a “reducing environment”

quite suitable to induce its rapid reduction upon getting into the blood stream, and consequently favors binding to serum albumin (even traces of these reducing agents should switch on the process of reduction that subsequently goes by itself with an auto-catalytic progression (see Scheme 2)).

The pharmacokinetic data reported in Table 1, which is obtained from mice treated by i.v. bolus of 50 mg kg^{-1} NAMI-A or of the same drug previously reduced with an equimolar concentration of ascorbic acid, show a significant reduction in the rate of the α phase of elimination with a corresponding increase of the AUC in the blood for the latter case. In addition, the AUC value of the reduced drug in the lungs is

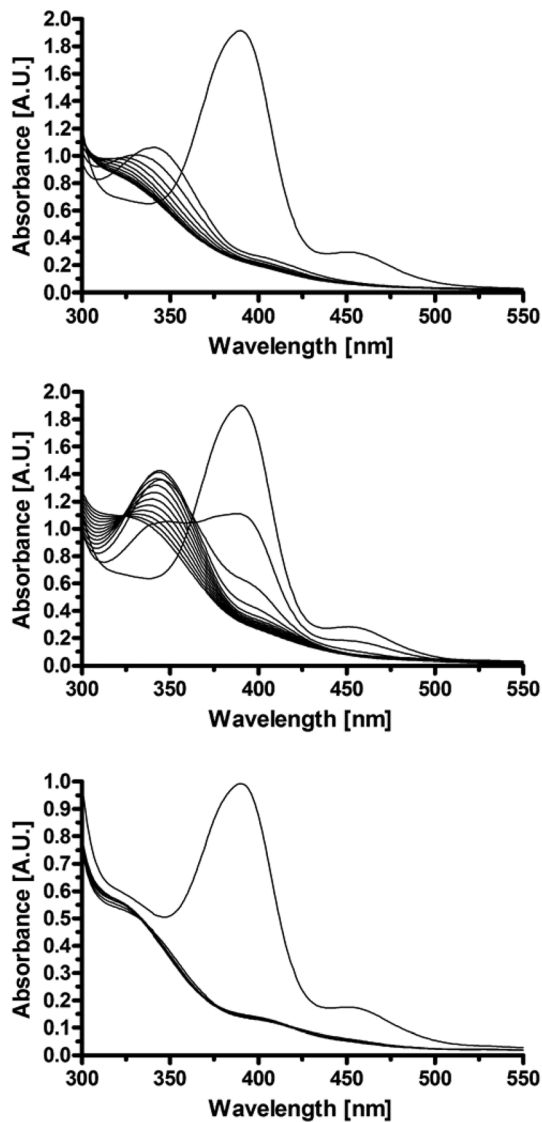


Fig. 3 Effects of ascorbic acid on the chemical transformation of NAMI-A in the presence of HSA. 400 μM (upper and middle panels) or 200 μM (lower panel) NAMI-A were reduced with ascorbic acid in the presence of HSA. Final NAMI-A : HSA : ascorbic acid ratios were 4 : 1 : 1 (upper panel), 4 : 1 : 0.025 (middle panel), 2 : 1 : 1 (lower panel). Medium: DPBS (pH 7.4), temperature: 25 $^{\circ}\text{C}$, spectra range: from 700 to 300 nm, scanning speed: 200 nm min^{-1} , band: 1.0 nm, data pitch: 1.0 nm, interval of measurements: 5 min, volume: 3 ml. Theoretical time zero was calculated as the sum of the spectra for all the reaction components measured in separate solutions. This experimental approach was used to mimic the situation at the beginning of the reaction without the use of stopped-flow technique.

significantly higher than that of the unmodified drug, while no significant modification between the two forms of NAMI-A is found in the kidneys (Fig. 4). The accumulation of the drug in the lungs shows a double step: an initial decay in the first 45 min after the end of infusion, which is independent of drug reduction before injection, followed by a progressive and significant increase of the lung concentration of the reduced drug, which peaks at 4 h after drug injection (Fig. 4, lower

Table 1 Pharmacokinetic data for bi-compartment distribution of NAMI-A in CD1 mouse^a

Compound	$t_{1/2}$ (h)		Vd (mL)	Cl_{tot} (mL h ⁻¹)	AUC _{0→∞} (mg Ru L ⁻¹ h)
	α	β			
NAMI-A(Ru ⁺³)	0.07	14.4	23.3	1.21	354
NAMI-A(Ru ⁺²)	0.32	12.8	14.1	0.71	668

^a Data were obtained by analysis of ruthenium plasma concentration by applying a bi-compartment model (β phase starting from 0.666 h). NAMI-A was reduced to 1 : 1 with ascorbic acid for 10 min before i.v. administration on CD1 mice. Ruthenium was quantified on samples, which were diluted by water, using the AAS technique.

panel). The elimination by the kidneys does not show differences between reduced and non-reduced NAMI-A (Fig. 4, upper panel) and that from the liver is similar to that from the lungs with a significant lower peak of ruthenium concentration per mg of tissue (about 5 ng mg^{-1} vs. about 13 ng mg^{-1} ; Fig. 4, middle panel).

Effects of reduction and of HSA binding of NAMI-A on tumor cell adhesion

The evaluation of the effects of the formation of HSA-NAMI-A adducts combined with the reduction of the metal center on its pharmacological properties was tested on the capacity of the ruthenium drug to inhibit the adhesion properties of MDA-MB-231 cells *in vitro*. This test is a *bona fide* simulation of the capacity of NAMI-A to prevent the arrest of metastatic cells in a target organ/tissue. It can also be taken as an example of how the treated cells can detach from their substrate of growth and re-adhere on it during the mitotic events. HSA did not affect the adhesion of MDA-MB-231 cells to their plastic substrate of growth and, as expected, NAMI-A significantly reduced the re-adhesion of the treated cells to less than 20% of the untreated controls (Fig. 5). The evaluation of the effects of the adducts NAMI-A-HSA on the re-adhesion capacity of the treated cells showed a significantly lower reduction than that of the free drug, which is independent of the NAMI-A : HSA ratio tested (Fig. 5). Regardless, the adducts with HSA caused a statistically significant reduction of the re-adhesion of the treated cells to about 30%–40% of the untreated controls. Under conditions of cellular stress, as in growing tumor tissue, albumin is proposed to be taken up by cells as a source of amino acids and energy.³⁹ Thus, it is possible to argue that the adducts NAMI-A : HSA constitute a drug delivery system to tumor cells and that NAMI-A could then perform its well-known pharmacological activities particularly in metastatic cells. Considering that the formation of adducts with serum albumin is responsible for a prolonged maintenance of the drug in the blood stream and of a significantly higher AUC in the lungs, it could be speculated that, even if the overall potency is slightly reduced, the adduct NAMI-A : HSA might allow the drug to prolong its effects on the lung metastasis target. Furthermore, it must be stressed that the lack of dependence of the biological effect studied on the ratio between

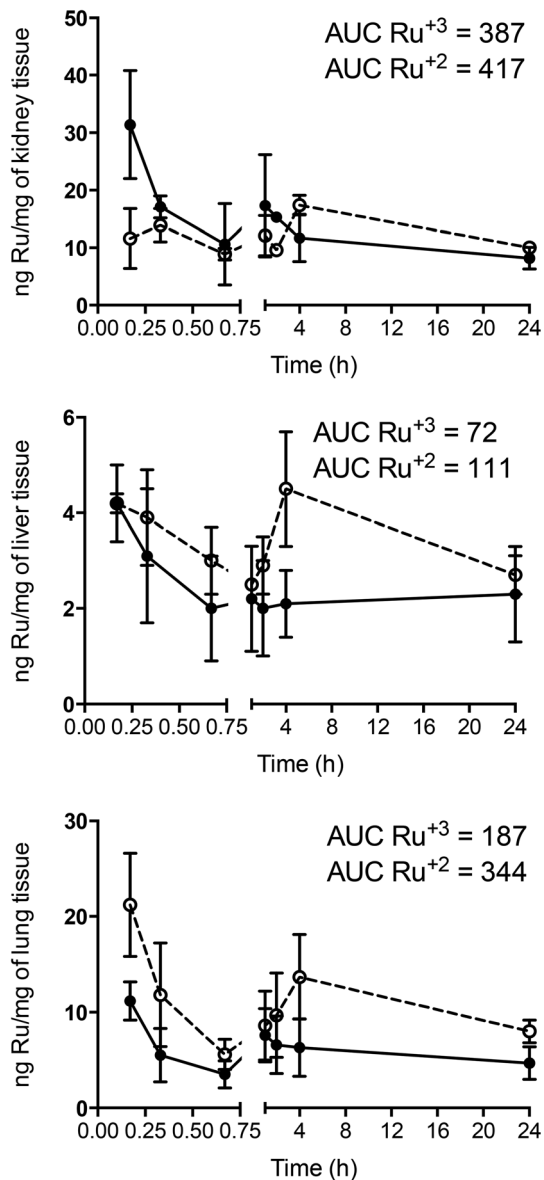


Fig. 4 Ruthenium concentration profiles after intravenous injection of NAMI-A in CD1 male mice. Immediately before use, 50 mg kg⁻¹ NAMI-A was dissolved in an appropriate volume of DPBS or of DPBS containing an equivalent amount of ascorbic acid (NAMI-A : ascorbic acid ratio was 1 : 1) for 10 min, in order to inject 0.05 ml/10 g body weight (NAMI-A Ru⁺³, continuous line; NAMI-A Ru⁺², dotted line). Ruthenium concentration in the kidney, liver and lung are reported in the upper, central and lower panel, respectively. The AUC values for kidney, liver and lung are expressed as mg Ru × L⁻¹ × h. Note that ruthenium was quantified by AAS.

NAMI-A and HSA suggests that the introduction of the drug into the blood stream (whatever daily dose is used at a conventional rate of infusion) should be irrelevant for the pharmacological effect.

The reduction of NAMI-A, at a 2 : 1 ratio with ascorbic acid, is responsible for a generally mild increase of the anti re-adhesive properties of the antimetastatic drug on MDA-MB-231 cells at higher doses (Fig. 6). These data are con-

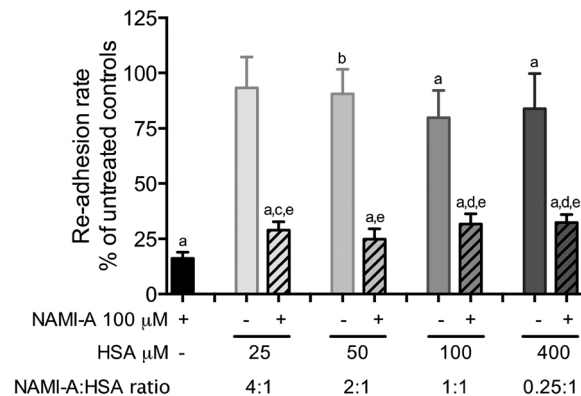


Fig. 5 Effect of NAMI-A and of NAMI-A-HSA adducts treatments on the re-adhesion of MDA-MB-231 cells. Cells were sown in complete medium and allowed to grow for 2 days at 37 °C, 5% CO₂ before the complete medium was replaced with serum-starved medium containing 0.1% w/v BSA for 24 h. Treatment with 100 μM NAMI-A was performed for 1 h at 37 °C in the presence of HSA at NAMI-A : HSA ratios of 1 : 0.25, 1 : 0.5, 1 : 1, 1 : 4. At the end of the treatment, cells were detached and left to re-adhere on a new culture well for 30 min. Note that adhered cells were detected by the SRB test. Data represent the mean ± S.D. values of three separate experiments, each of which were performed in quadruplicate. Statistical analysis: One-Way Analysis of Variance (ANOVA) and Tukey-Kramer Multiple Comparisons Test. (a) $p < 0.001$ and (b) $p < 0.01$ vs. untreated controls; (c) $p < 0.01$ and (d) $p < 0.001$ vs. NAMI-A; (e) $p < 0.001$ vs. the same dose of HSA without NAMI-A.

sistent with the *in vivo* effects of NAMI-A, which is reduced in the tube immediately before injection and given to mice bearing MCA mammary carcinoma. They show a significantly greater effect of the drug on lung metastases as compared to controls treated with the parent drug alone.²⁶ However, the reduction of NAMI-A with ascorbic acid in the presence of a

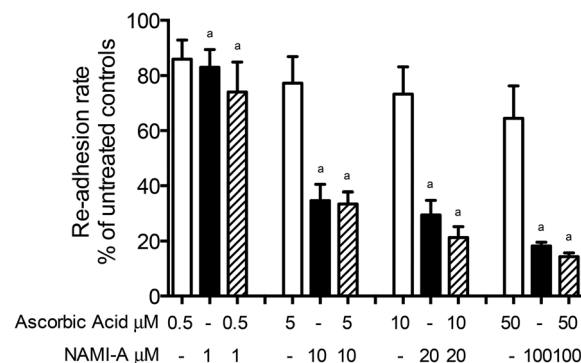


Fig. 6 Effect of reduced NAMI-A on the re-adhesion of MDA-MB-231 cells. Cells were sown in complete medium and allowed to grow for 2 days at 37 °C, 5% CO₂ before the complete medium was replaced with serum-starved medium containing 0.1% w/v BSA for 24 h. Treatment with 1, 10, 20 and 100 μM NAMI-A was performed for 1 h at 37 °C in the presence of ascorbic acid at NAMI-A : ascorbic acid ratios of 1 : 0.5 and 2 : 1. At the end of the treatment, cells were detached and left to re-adhere on a new culture well for 30 min, and adhered cells were detected by the SRB test. Data represent the mean ± S.D. values of three separate experiments, each of which were performed in quadruplicate. Statistical analysis: One-Way Analysis of Variance (ANOVA) and Tukey-Kramer Multiple Comparisons Test. (a) $p < 0.001$ vs. untreated controls.

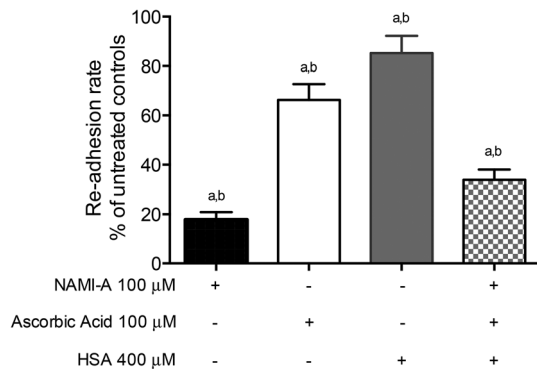


Fig. 7 Effect of reduced NAMI-A-HSA adducts on the re-adhesion of MDA-MB-231 cells. Cells were sown in complete medium and allowed to grow for 2 days at 37 °C, 5% CO₂ before the complete medium was replaced with serum-starved medium containing 0.1% w/v BSA for 24 h. Treatment with 100 μM NAMI-A was performed for 1 h at 37 °C in the presence of 100 μM ascorbic acid and 400 μM HSA (NAMI-A : HAS : ascorbic acid ratio of 1 : 4 : 1). At the end of the treatment, cells were detached and left to re-adhere on a new culture well for 30 min; moreover, the adhered cells were detected by the SRB test. Data represent the mean ± S.D. values of three separate experiments, each of which were performed in quadruplicate. Statistical analysis: One-Way Analysis of Variance (ANOVA) and Tukey-Kramer Multiple Comparisons Test. (a) $p < 0.001$ vs. untreated controls; (b) $p < 0.001$ vs. NAMI-A + ascorbic acid + HSA.

4-fold excess HSA caused the inhibition of cell re-adhesion to about 40% of the untreated controls (Fig. 7), which is an effect comparable to that caused by the adduct NAMI-A-HSA in the absence of any reduction (compare Fig. 5 and 7).

Globally taken, these data support the capacity of NAMI-A to bind to serum albumin. This reaction is facilitated when the drug is in its reduced form and, in agreement with already reported data, the adduct formed with albumin maintains the biological activity of the ruthenium drug.^{28,30} The formation of the adduct is favored by low ratios of NAMI-A : HSA and by the reduction of the drug. However, when injected in animals (and even more in humans), NAMI-A may also bind to the blood cells, in addition to the plasma proteins. NAMI-A binding to cells was studied *in vitro* in many cell types, showing a plateau within few minutes after cell challenge, which is indicative of specific binding on molecular determinant in the cell membrane.^{18,24,40} However, unlike KP1019, NAMI-A does not get into the cell cytoplasm^{41,42} and this observation may explain the rapid equilibrium established between bound and free NAMI-A when the milieu in which cells are kept *in vitro* is replaced with a new milieu free of the drug.¹⁸ Given that red blood cells are a significant constituent of the blood, it is therefore expected that a great amount of the injected drug is retained in the circulation and is slowly released simply to replace the free drug eliminated by kidneys by glomerular filtration. The slow release of the drug from the blood cells may also explain the relatively high $t_{1/2}$ of elimination. The difference in *in vivo* PK and the faster binding to albumin of the reduced NAMI-A seem to exclude that, even at low doses, the drug is rapidly reduced immediately upon injection. It can be

then speculated that cell and protein binding prevails over reduction after *in vivo* administration. This observation supports the thesis that the reduction of the drug before injection must be considered relevant for the pharmacological activity, supporting the relevance of the corresponding patent.⁴³

Acknowledgements

The permission to perform the chemical studies at the Department of Chemical and Pharmaceutical Sciences of the University of Trieste is gratefully appreciated. The chemical and biological contribution by N. V. and Z. J. at Callerio Foundation Onlus in Trieste was supported by the student project of the Palacky University in Olomouc (Grant PrF2014 029) and by Operational Program Education for Competitiveness – European Social Fund (CZ 1.07/2.3.00/20.0057). This work was entirely funded by Callerio Foundation Onlus.

References

- S. M. Page, S. R. Boss and P. D. Barker, *Future Med. Chem.*, 2009, **1**, 541–559.
- E. S. Antonarakis and A. Emadi, *Cancer Chemother. Pharmacol.*, 2010, **66**, 1–9.
- S. Komeda and A. Casini, *Curr. Top. Med. Chem.*, 2002, **12**, 219–235.
- A. Bergamo, R. Gagliardi, V. Scarcia, A. Furlani, E. Alessio, G. Mestroni and G. Sava, *J. Pharmacol. Exp. Ther.*, 1999, **289**, 559–564.
- C. G. Hartinger, M. A. Jakupec, S. Zorbas-Seifried, M. Groessl, A. Egger, W. Berger, H. Zorbas, P. J. Dyson and B. K. Keppler, *Chem. Biodiversity*, 2008, **5**, 2140–2155.
- X. Meng, M. L. Leyva, M. Jenny, I. Gross, S. Benosman, B. Fricker, S. Harlepp, P. Hebraud, A. Boos, P. Wlosik, P. Bischoff, C. Sirlin, M. Pfeffer, J. P. Loeffler and C. Gaiddon, *Cancer Res.*, 2009, **69**, 5458–5466.
- M. Vadori, S. Pacor, F. Vita, S. Zorzat, M. Cocchietto and G. Sava, *J. Inorg. Biochem.*, 2013, **118**, 21–27.
- J. M. Rademaker-Lakhai, D. van den Bongard, D. Pluim, J. H. Beijnen and J. H. M. Schellens, *Clin. Cancer Res.*, 2004, **10**, 3717–3727.
- C. G. Hartinger, S. Zorbas-Seifried, M. A. Jakupec, B. Kynast, H. Zorbas and B. K. Keppler, *J. Inorg. Biochem.*, 2006, **100**, 891–904.
- G. Sava, I. Capozzi, K. Clerici, R. Gagliardi, E. Alessio and G. Mestroni, *Clin. Exp. Metastasis*, 1998, **16**, 371–379.
- G. Sava, K. Clerici, I. Capozzi, M. Cocchietto, R. Gagliardi, E. Alessio, G. Mestroni and A. Perbellini, *Anti-Cancer Drugs*, 1999, **10**, 129–138.
- G. Sava, S. Zorzat, C. Turrin, F. Vita, M. R. Soranzo, G. Zabucchi, M. Cocchietto, A. Bergamo, S. DiGiovine, G. Pezzoni, L. Sartor and S. Garbisa, *Clin. Cancer Res.*, 2003, **9**, 1898–1905.

- 13 J. Y. Den and H. Liang, *World J. Gastroenterol.*, 2014, **20**, 3967–3975.
- 14 J. M. McLoughlin, E. H. Jensen and M. Malafa, *Cancer Control*, 2006, **13**, 32–41.
- 15 M. McCusker, N. Basset-Seguín, R. Dummer, K. Lewis, D. Schadendorf, A. Sekulic, J. Hou, L. Wang, H. Yue and A. Hauschild, *Eur. J. Cancer*, 2014, **50**, 774–783.
- 16 M. Shiiba, M. Unozawa, M. Higo, Y. Kouzu, A. Kamamatsu, Y. Sakamoto, K. Ogawara, K. Uzawa, Y. Takiguchi and H. Tanzawa, *Mol. Clin. Oncol.*, 2014, **2**, 609–617.
- 17 G. Sava, F. Frausin, M. Cocchietto, F. Vita, E. Podda, P. Spessotto, A. Furlani, V. Scarcia and G. Zabucchi, *Eur. J. Cancer*, 2004, **40**, 1383–1396.
- 18 F. Frausin, V. Scarcia, M. Cocchietto, A. Furlani, B. Serli, E. Alessio and G. Sava, *J. Pharmacol. Exp. Ther.*, 2005, **313**, 227–233.
- 19 B. Gava, S. Zorzet, P. Spessotto, M. Cocchietto and G. Sava, *J. Pharmacol. Exp. Ther.*, 2006, **317**, 284–291.
- 20 A. Bergamo, R. Delfino, C. Casarsa and G. Sava, *Anti-Cancer Agents Med. Chem.*, 2012, **12**, 949–958.
- 21 G. Sava, E. Alessio, A. Bergamo and G. Mestroni, in *Topics in Biological Inorganic Chemistry*, ed. M. J. Clarke and P. J. Sadler, Springer, Berlin, 1999, pp. 143–169.
- 22 M. Bouma, B. Nuijen, M. T. Jansen, G. Sava, A. Flaibani, A. Bult and J. H. Beijnen, *Int. J. Pharm.*, 2002, **248**, 239–246.
- 23 E. Alessio, G. Mestroni, A. Bergamo and G. Sava, *Curr. Top. Med. Chem.*, 2004, **4**, 1525–1535.
- 24 M. Bacac, A. C. G. Hotze, K. van der Schilden, J. G. Haasnoot, S. Pacor, E. Alessio, G. Sava and J. Reedijk, *J. Inorg. Biochem.*, 2004, **98**, 402–412.
- 25 M. Brindell, D. Piotrowska, A. A. Shoukry, G. Stochel and R. van Eldik, *J. Biol. Inorg. Chem.*, 2007, **12**, 809–818.
- 26 G. Sava, A. Bergamo, S. Zorzet, B. Gava, C. Casarsa, M. Cocchietto, A. Furlani, V. Scarcia, B. Serli, E. Iengo, E. Alessio and G. Mestroni, *Eur. J. Cancer*, 2002, **38**, 427–435.
- 27 M. I. Webb and C. J. Walsby, *Dalton Trans.*, 2011, **40**, 1322–1331.
- 28 M. Brindell, I. Stawoska, J. Supel, A. Skoczowski, G. Stochel and R. van Eldik, *J. Biol. Inorg. Chem.*, 2008, **13**, 909–918.
- 29 I. Ascone, L. Messori, A. Casini, C. Gabbiani, A. Balerna, F. Dell'Unto and A. CongiuCastellano, *Inorg. Chem.*, 2008, **47**, 8629–8634.
- 30 M. Liu, Z. J. Lim, Y. Y. Gwee, A. Levina and P. A. Lay, *Angew. Chem., Int. Ed.*, 2010, **49**, 1661–1664.
- 31 G. Mestroni, E. Alessio and G. Sava, New salts of anionic complexes of Ru(III) as antimetastatic and antineoplastic agents, *International Patent PCT C 07F 15/00 A61 K 31/28*, WO 98/00431, 1998.
- 32 P. Skehan, R. Soreng, D. Scudiero, A. Monks, J. McMahon, D. Vistica, J. T. Warren, H. Bokesch, S. Kenney and M. R. Boyd, *J. Natl. Cancer Inst.*, 1990, **82**, 1107–1112.
- 33 H. Tamura and T. Arai, *Bunseki Kagaku*, 1992, **41**, 13–17.
- 34 S. Leijen, S. A. Burgers, P. Baas, D. Pluim, M. Tibben, E. van Werkhoven, E. Alessio, G. Sava, J. H. Beijnen and J. H. M. Schellens, *Invest. New Drugs*, 2014, DOI: 10.1007/s10637-014-0179-1.
- 35 L. Messori, P. Orioli, D. Vullo, E. Alessio and E. Iengo, *Eur. J. Biochem.*, 2000, **267**, 1206–1213.
- 36 A. Bergamo, L. Messori, F. Piccioli, M. Cocchietto and G. Sava, *Invest. New Drugs*, 2003, **21**, 401–411.
- 37 A. Levina, J. B. Aitken, Y. Y. Gwee, Z. J. Lim, M. Liu, A. M. Singharay, P. F. Wong and P. A. Lay, *Chem. – Eur. J.*, 2013, **19**, 3609–3619.
- 38 A. A. Hostetter, M. F. Osborn and V. J. DeRose, *ACS Chem. Biol.*, 2012, **7**, 218–225.
- 39 G. Stehle, H. Sinn, A. Wunder, H. H. Schrenk, J. C. M. Stewart, G. Hartung, W. Maier-Borst and D. L. Heene, *Crit. Rev. Oncol./Hematol.*, 1997, **26**, 77–100.
- 40 F. Frausin, M. Cocchietto, A. Bergamo, V. Scarcia, A. Furlani and G. Sava, *Cancer Chemother. Pharmacol.*, 2002, **50**, 405–411.
- 41 M. Groessl, O. Zava and P. J. Dyson, *Metallomics*, 2011, **3**, 591–599.
- 42 J. B. Aitken, S. Antony, C. M. Weekley, B. Lai, L. Spiccia and H. H. Harris, *Metallomics*, 2012, **4**, 1051–1056.
- 43 G. Mestroni, E. Alessio, G. Sava, E. Iengo, S. Zorzet and A. Bergamo, Ruthenium(II) complexes with high anti-tumoral and antimetastatic activities, *International Patent ITMI992256/A1*, WO0130789 (A1), 2001.