

# Accepted Manuscript

Lower Cretaceous provenance in the northern Austral basin of Patagonia from sedimentary petrography

Vanessa Barberón, Gonzalo Ronda, Pablo R. Leal, Christian Sue, Matías C. Ghiglione



PII: S0895-9811(15)30051-1

DOI: [10.1016/j.jsames.2015.08.014](https://doi.org/10.1016/j.jsames.2015.08.014)

Reference: SAMES 1451

To appear in: *Journal of South American Earth Sciences*

Received Date: 10 March 2015

Revised Date: 15 August 2015

Accepted Date: 29 August 2015

Please cite this article as: Barberón, V., Ronda, G., Leal, P.R., Sue, C., Ghiglione, M.C., Lower Cretaceous provenance in the northern Austral basin of Patagonia from sedimentary petrography, *Journal of South American Earth Sciences* (2015), doi: 10.1016/j.jsames.2015.08.014.

This is a PDF file of an unedited manuscript that has been accepted for publication. As a service to our customers we are providing this early version of the manuscript. The manuscript will undergo copyediting, typesetting, and review of the resulting proof before it is published in its final form. Please note that during the production process errors may be discovered which could affect the content, and all legal disclaimers that apply to the journal pertain.

# Lower Cretaceous provenance in the northern Austral basin of Patagonia from sedimentary petrography

Vanesa Barberón<sup>1</sup>, Gonzalo Ronda<sup>1</sup>, Pablo R. Leal<sup>2</sup>, Christian Sue<sup>3</sup> and Matías C. Ghiglione<sup>1</sup>

- (1) *Instituto de Estudios Andinos - CONICET, Departamento de Ciencias Geológicas, Universidad de Buenos Aires, Argentina.*
- (2) *Instituto de Geociencias Básicas, Aplicadas y Ambientales - CONICET, Departamento de Ciencias Geológicas, Universidad de Buenos Aires, Argentina.*
- (3) *Franche-Comté University Besançon, CNRS-UMR6249, OSU-THETA, France.*

## ABSTRACT

The northern Austral basin from Patagonia is characterized by an Early Cretaceous (Barremian-Albian) coarse-grained regressive sequence. These littoral to continental deposits conform a 150 km long basin cropping out along the Southern Patagonian Andes between 47- 48°S. The basin fill consist of basal deltaic sandstones with interbedded shales and limestones from the Río Belgrano Formation, topped by up to 350 m of fluvial conglomerates and reworked tuffs of the Río Tarde and Kachaiké formations. This continental depocenter represent a major geodynamic and paleoenvironmental change from the underlying marine Río Mayer Formation. In this study we analyze the tectonic setting and provenance during deposition of the coarse-grained sequence using sedimentary petrography of 37 thin sections in four stratigraphic profiles covering the northern basin. Our dataset indicates mainly a recycled orogenic sandstones provenance, in agreement with potential surrounding basement sources.

**Keywords:** Austral basin, Southern Patagonian Andes, Early Cretaceous, sandstone provenance, sedimentary petrography.

## 1. Introduction

In the northern Austral basin located between 46,5° and 48,5°SL in the southern extreme of South America, an isolated Barremian-Albian coarse-grained depocenter developed on top of the previous deep marine sag sequence. This littoral to continental depocenter is recognized along the Southern Patagonian Andes with outcrops restricted to the area between Lago Posadas to the North and Lago San Martín to the South (Fig. 1; Aguirre-Urreta and Ramos, 1981). The depocenter consists of basal sandstones with interspersed shales and limestones from the Río Belgrano Formation, topped by up to 350 m of conglomerates and tuffs of the Río Tarde and Kachaíke formations (Fig. 2; Aguirre-Urreta, 1990; Ramos, 1989). Sedimentological studies from Arbe (1986) determine a shallow marine depositional environment near to shoreline, followed by deltaic to fluvial regressive sequences. The Río Belgrano Formation has Hauterivian-Barremian ammonites (Aguirre-Urreta, 1990, 2002), and yielded a ~122 Ma maximum depositional age from detrital zircons (Ghiglione *et al.*, 2014a, 2015). The Río Tarde Formation is constrained to the Aptian-Cenomanian by a ~121.5 Ma peak of detrital zircons at its base, a U-Pb ~112 ± 2 Ma age for a tuff in its mid section (Ghiglione *et al.*, 2015), and tuffs at the top with K-Ar ages of ~99-97 Ma (Ramos and Drake, 1987).

There are currently two main different hypotheses to explain the geodynamic context of this littoral to continental confined depocenter on top of the marine sag. The coarse-grained sandstones could be a response to basement uplift along the Southern Patagonian Andes (Ramos, 1979, 1989; Aguirre-Urreta and Ramos, 1981), and therefore indicate the beginning of the foreland stage in the northern Austral basin. However, in a recent U-Pb study in detrital zircons Ghiglione *et al.* (2014a, 2015) detected Paleozoic basement sources mixed with Lower to Middle Jurassic volcanic detritus, characteristic of Central Patagonia. The latter study related the coarse grained sequences, and the onset of littoral to continental conditions, to uplift and exhumation of the Deseado massif during Aptian post-breakup deformation (Giacosa *et al.*, 2010; Dalziel *et al.*, 2013; Heine *et al.*, 2013). Recently, intracontinental deformation in the extra-Andean Patagonia has been

related to the development of a broken foreland system in Aptian times (Gianni *et al.*, 2015).

First uplift along the Southern Patagonian Andes took place afterwards, during the Late Cretaceous, with deformation concentrated south of Lago San Martín (Fig. 1; Arbe, 1986, 2002; Kraemer, 1998; Ghiglione *et al.*, 2014b). Andean uplift on those sectors produced the onset of the foreland stage in the Austral basin, as is indicated by the appearance of Cenomanian-Turonian coarse sandstones (Fildani *et al.*, 2003; Fosdick *et al.*, 2011, Varela *et al.*, 2012) on top of the sag deposits (Wilson, 1991). Foreland deposits in the Última Esperanza region (Fig. 1; Katz, 1963; Wilson, 1991) contain grains clearly derived from Andean sources, including Paleozoic-Mesozoic metamorphic and ophiolitic complexes, and Upper Jurassic volcanic units (Fildani and Hessler, 2005; Romans *et al.*, 2011). However, between Lagos Viedma and Argentino there are Late Cretaceous sequences with quartzose-recycled sources, most probably from extra-Andean Patagonia origin (Manassero, 1988; Macellari *et al.*, 1989).

We analyzed in this paper the sedimentary petrography of 37 thin sections in four stratigraphic profiles covering the whole Early Cretaceous continental depocenter (see location on Fig. 2), and compare them with the detrital zircons chronological data from Ghiglione *et al.* (2015). The modal composition of the sandstones is not only useful to classify the sedimentary rocks (Folk *et al.*, 1970), but also to establish the composition of provenance areas (Scasso and Limarino, 1997; Tunik *et al.*, 2004; Tunik *et al.*, 2010; Spalletti *et al.*, 2008). Sandstones petrography composition is also a powerful tool to establish the related tectonic setting and to study the geodynamic evolution of the basins (Dickinson and Suczek, 1979; Spalletti *et al.*, 1986). Furthermore, detrital modes are influenced by climate, transportation, diagenesis and depositional environment (Ingersoll, 1978; Dickinson and Suczek, 1979). The objective of the present work is to determine the sedimentary sources of the Lower Cretaceous regressive sequences from the northern Austral basin based on its petrographic composition and its tendency-variations along the stratigraphic column.

## 2. Geological setting

The Austral Basin, located in southern Patagonia and along the Southern Patagonian Andes, is characterized by three main Mesozoic-Cenozoic tectonic stages: rift, thermal subsidence and foreland stage (Biddle *et al.*, 1986; Robbiano *et al.*, 1996; Ramos, 2002; Kraemer *et al.*, 2002; Peroni *et al.*, 2002).

The rift stage was originated during a Jurassic extensional phase, related to the opening of the South Atlantic Ocean and Gondwana breakup (Uliana and Biddle, 1988; Pankhurst *et al.*, 2000). This phase is represented by volcanic rocks of the Middle to Upper Jurassic El Quemado Complex (Pankhurst *et al.*, 2000). To the southwest the rift stage developed Upper Jurassic oceanic crust in the Rocas Verdes basin (Fig. 1; Calderón *et al.*, 2012). A sag stage followed, represented by the Berriasian-Valanginian siliciclastic sandstones of the Springhill Formation covered by black shales of the Río Mayer Formation (Uliana and Biddle, 1988). The last tectonic stage corresponds to up to 5000 m thick Cenomanian-Miocene foreland deposits on top of the sag units present south of Lago San Martín (Fig. 1; Kraemer and Riccardi, 1996; Fildani *et al.*, 2003; Fosdick *et al.*, 2011, Varela *et al.*, 2012).

## 3. Stratigraphy

The oldest exposed unit along the northern segment of the Southern Patagonian Andes corresponds to the metasedimentary basement of the Río Lácteo Formation (Bianchi, 1967) of Devonian to Carboniferous age (Giacosa and Márquez, 2002; Augustsson *et al.*, 2006; Hervé *et al.*, 2007). Unconformably or in tectonic contact with the metamorphic basement are the volcanic rocks of the El Quemado Complex (Riccardi, 1971), related to the Jurassic rift stage. The volcanic rocks are conformably covered by a marine platform with siliciclastic sandstones and conglomerates from the Springhill Formation (Thomas, 1949) and black shales from Río Mayer Formation (Riccardi, 1971). The marine sediments represent the Lower Cretaceous sag stage. The latter succession is conformably covered by green sandstones and conglomeratic rocks from the Río Belgrano and Río Tarde formations (Ramos, 1979) of Barremian-Albian age. The Río Tarde Formation is divided into two members based on its pyroclastic content. The lower

member is characterized by red conglomerates and sandstones, interpreted as a continental fluvial system of high energy. The upper member is dominated by reworked tuffs, ignimbrites and sandstones deposited in a floodplain (Arbe, 1986).

The Upper Cretaceous is poorly represented north of 50°S, and consists of red continental deposits of the Cardiel Formation (Russo and Flores, 1972) less than 100 m thick. The Cenozoic deposits are around 1500 m thick, and consist of the Eocene Posadas Basalt (Riggs, 1957), followed by the Oligocene marine Centinela Formation (Furque and Camacho, 1972), the thick Miocene synorogenic deposits of the Santa Cruz Formation (Hatcher, 1897, 1900) and the Belgrano Basalt (Riggs, 1957). Quaternary deposits cover widely the piedmont with glacial, fluvial, lacustrine and alluvial deposits.

### 3.1 Río Belgrano Formation

The Río Belgrano Formation is developed significantly from Lago Pueyrredón to the Arroyo Potranquitas (Fig. 3; Aguirre-Urreta and Ramos, 1981; Relañez, 2014). However, we recognized the northernmost outcrops in the Río Zeballos bridge (46°50'S), consisting of green sandstones in contact above grey shales with parallel lamination, characteristic of the transition between Río Mayer and Río Belgrano formations. The thickness diminish to the south: from 117 m measured in the Río Belgrano stratotype section to 40 m measured in Ea Los Ñires. Other described profiles in the northern sector are 133 m thick at the Río Tarde canyon (Homoc, 1980), and 160 m in the southwestern coast of Lago Pueyrredón (Aguirre-Urreta, 2002).

The age based on fossils is Barremian to Aptian (Aguirre-Urreta, 1990; 2002), in agreement with a ~122 Ma maximum depositional age from detrital zircons (Ghiglione *et al.*, 2015). The Río Belgrano Formation is characterized by green sandstones with limestone intercalations and calcareous sandstones. The sedimentary environment is defined as a marine platform near coastline (Ramos, 1979) to deltaic (Pöthe de Baldis, 1981; Arbe, 2002).

### 3.2 Río Tarde Formation

The Río Tarde Formation overlies the Río Belgrano Formation in concordance or erosive discordance. The formation is divided into two members: the lower member is characterized by red conglomerates and sandstones, and the upper member is dominated by tuffs and tuffaceous sandstones. The age of this unit can be constrained to the Aptian-Cenomanian by a ~121 Ma age from detrital zircons at its base, a U-Pb ~112 ± 2 Ma age

for a tuff in its mid section (Ghiglione *et al.*, 2015), and tuffs at the top with K-Ar ages made in biotite and plagioclase of ~99-97 Ma (Ramos and Drake, 1987), in agreement with previous stratigraphic considerations (Aguirre-Urreta and Ramos, 1981; Arbe, 2002). To the south a correlation can be made with the late Aptian - early Cenomanian Kachaïke Formation (Fig. 3; Riccardi, 1971; Ramos, 1979; Riccardi and Rolleri, 1980). The upper member is also regarded as equivalent to the volcanic Divisadero Formation of the Northern Patagonian Andes (Ghiglione *et al.*, 2015), geochronologically constrained between 118 and 116 Ma (Pankhurst *et al.*, 2003).

### 3.3 Kachaïke Formation

This unit is recognized from Ea. Los Ñires to the north, in concordance and net contact over the Río Belgrano Formation (Figs 2 and 3), while the southernmost outcrops are south of Lago San Martín (Fig. 1). Dominated by varicolored tuffaceous sandstones, it preserves trunks, leaves, ammonites and bivalves. Rebassa (1982) assigned the environment to a coarse-grained deltaic plain with interbedded prodelta shales. The abundant palynological assemblages are late Aptian - early Cenomanian (Archangelsky and Llorens, 2005; Guler and Archangelsky, 2006), and the ammonites fauna is late Aptian (Aguirre-Urreta, 2002).

### 3.4 Stratigraphic profiles

We present four new stratigraphic profiles covering the whole Early Cretaceous continental depocenter (Figs 3 and 4), and studied its sandstone petrography in an attempt to determine the sources of the sediments and the related geodynamic setting. The contact between the black shales of Río Mayer Formation and the sandstones of Río Belgrano Formation is transitional. Note that in “Estancia Los Ñires” and “Arroyo Potranquitas” profiles, Kachaïke Formation is considered as equivalent to Río Tarde Formation.

#### a) Río Oro profile

The sedimentary profile on the SE side of Río Oro includes the Río Belgrano and lower Río Tarde formations (Figs 2 and 4). The measured section of Río Belgrano Formation is composed of 40 m thick green sandstones of fine to medium grain sizes and interspersed fine conglomerates (Fig. 4): The first 9 m includes medium to fine sandstones, with flaser, wavy and cross bedding, and intercalated conglomeratic

sandstones with erosive bottoms. A continuous 2 m thick bed of conglomeratic sandstones follows, containing pelecypods, gastropods and corals. The section continues with 8 m of thinning-upwards medium sandstones in 50 cm thick banks, whose grain size continuously decreases to shale, followed by 6 m of shale and 5 m of fine massive sandstones. The section ends with 10 m of conglomeratic to sandstone thinning-upwards banks with erosive base and parallel to cross bedding.

The measured thickness of the overlying Río Tarde Formation includes the basal 40 m of the lower member (Fig. 4): the first 12 m are thinning-upwards banks of red conglomerates to medium sandstones, with erosive base, parallel and cross-bedding. The section continues with 11 m of coarse to medium sandstones and tuffs, and 9 m of thinning-upwards red conglomeratic banks, with erosive base. The measured section ends with 7 m of sandstones with silicified trunks.

#### **b) Río Belgrano profile**

The profile includes only the Río Belgrano Formation, since the lower Río Tarde Formation is covered. We precisely measured a 117 m high profile (Fig. 4):

The first 26 meters include 5 m of alternating banks of medium sandstones and silt at the base, and 7 meters of green medium sandstones with parallel lamination to the top. Above, follows 2 meters of medium sandstones with parallel lamination, and 5 m of fine to medium sandstones.

The section continues with 56 m of beds between 2 and 5 m thick, showing cross ripple lamination at the bottom and parallel lamination, planar, sigmoid and tangential stratification toward the top. Levels of concretions can be identified.

The last 35 m are coarser, starting with 6 m of medium sandstones with trough cross-bedding and concretions at the base, topped by 1 m of fine conglomerates. 14 m of medium to coarse sandstones with parallel lamination follows, topped by a thin level of limestone with concretions. The sections ends with 5 m of conglomerates and a thinning-upwards bank from coarse to very fine sandstones with parallel lamination.

#### **c) Estancia Los Ñires profile**

The measured thickness in Estancia Los Ñires is 179 m, and includes the Río Mayer, Río Belgrano and Kachaïke formations.

The 86 m thick Río Mayer Formation is dominated by shales including concretions and ammonites, and interspersed fine sandstones.



The Río Belgrano Formation overlies in concordance, with 12 m of fine sandstones with parallel lamination, concretions and remnants of bivalves. The section continues with 2 m of fine laminated sandstones with bivalves and trunks. In erosive contact there is 0.5 m of conglomerates at the base of a 2 m thick bank of medium sandstones with remnants of bivalves. A 7 m bank of fine sandstones with fossils trace follows. The section continues with 6 m of medium sandstones with trough cross bedding and carbon, and 8 m of coarse sandstones with concretions. The section ends with 3 m of medium sandstones with trough cross bedding and two thin banks of conglomerates.

The Kachaïke Formation overlies in net contact. Its total thickness is 53 m made of tuffaceous sandstones with intercalations of shales and carbon, and abundant remnants of vegetation.

#### **d) Arroyo Potranquitas profile**

The measured thickness of Arroyo Potranquitas profile is 350 m, including the Río Mayer, Río Belgrano and Kachaïke formations.

The Río Mayer Formation is dominated by shales with thin intercalations of very fine sandstones. The proportion of sandstones increases to the top.

We follow the 47 m thick profile of Relañez (2014) for the Río Belgrano Formation: The profile starts with 5 m of massive fine sandstones with a level of medium sandstones, concretions and ripple cross lamination, along with remnants of bivalves. There is a thin level of carbon, of centimeters range, with horizontal lamination. It is followed by 8 meters of limestones to fine sandstones with horizontal lamination and rests of bivalves. The section continues with 9 meters of limestones, and a thickening-upwards 16 m bank of fine to medium sandstones, with levels of concretions, ripple lamination and remnants of bivalves. The Río Belgrano Formation culminates with 4 meters of medium sandstones with horizontal lamination and concretions to the top.

In concordance continues the Kachaïke Formation, where 140 m of medium to coarse sandstones tuffs, level of shales and remnants of leaves have been measured.

## **4. Samples and analytical methods**

To characterize the petrographic composition, 37 samples of coarse to fine grained sandstones were collected (Fig. 4). The samples were studied under a polarized microscope (Fig. 5) and classified following the scheme of Folk *et al.* (1970), using

monomineral quartz (Qm), feldspars (F), and lithics plus polycrystalline quartz (Lt) components (QmFLt diagram, Fig. 6). Approximately 500 framework grains and intergranular space components were counted per thin section for quantitative petrographic analysis, with spacing greater than average grain size. Following the Gazzi-Dickinson method (Ingersoll *et al.*, 1984), fragments monominerals >62  $\mu\text{m}$  within lithoclasts were counted as monomineral clasts. The count was made on 37 thin sections, using a Swift point counter.

Modal components taken into account were of second order, therefore quartz separates in monocrystalline and polycrystalline quartz, feldspars were distinguished between potassic feldspar and plagioclase, and the lithic fragments were differentiated in volcanic, sedimentary and metamorphic (Fig. 5). These components are used to discriminate the tectonic source area as proposed by Dickinson and Suczek (1979) (Fig. 7). Modal composition was determined on the 37 thin sections: 3 from Río Mayer Formation, 28 from the Río Belgrano Formation, 2 from the Río Tarde Formation and 4 from the Kachaike Formation.

A complementary clast composition study was made in conglomerates from the lower member of Río Tarde Formation, in Río Oro profile. They are illustrated separately in Figure 8a, because they do not meet the standard for sandstone petrography.

## 5. Sandstones and conglomerate petrography

The basic petrographic characteristics are described in Table 1. The recalculated framework modes are presented in Table 2. Most samples are classified as litharenites and feldspathic litharenites following the classification of Folk *et al.* (1970). According to the textural definitions of sandstones by Dott (1964), all samples are arenites.

Most of the samples are clast-supported and moderately sorted, with straight to convex-concave grain contacts, while porosity is low to absent. The predominant cements in the two northern sections are oxides and carbonates. In the southern profiles, ferromagnesian and magnesian phyllosilicates can be found in the cements, in addition to iron oxides and carbonates.

Sandstones of the Río Belgrano Formation are very fine to coarse, moderately sorted and contain subangular to subrounded clasts. Based on Folk *et al.* (1970) (Fig. 6, Table 2) the sandstones of Río Belgrano Formation are mostly feldspathic litharenites to

litharenites, with one litharenite feldspathic and one sublitharenite in the Río Belgrano profile.

The Río Mayer Formation is composed of sublitharenites and litharenites. The lower member of Río Tarde Formation and Kachaike Formation are mostly litharenites, with one lithic feldsarenite.

Conglomerates from the basal Río Tarde Formation are polymictic with well rounded clasts, moderate to well sorted and carbonatic cements. The clasts were separated between metasedimentary (MS), silicic volcanic (SV) and supplementary material (SM). Most clasts derive from low grade metamorphic rocks (Fig. 8a).

## 6. Provenance analysis

Dickinson and Suczek (1979) have tectonically characterized source areas using ternary diagrams. The diagrams use three basic components (Q-F-L); Q: cherts and quartz including polycrystalline and monomineral; F: feldspars; and L: lithics. The QFL diagram distinguishes three fields: continental blocks, recycled orogens and magmatic arcs. The Qm-F-Lt diagram, previously used for sandstone classification, subdivides the recycled orogen field into quartzose, transitional, and lithics recycled with most differences between monocrystalline quartz and total lithics, and adds a so-called "mixed" field (Fig. 7b). It is important to note that detrital modes are the result of several factors as climate driving erosion processes, transport mechanism, distance from source area, and diagenesis (Dickinson and Suczek, 1979; Marsaglia and Ingersoll, 1992; Ingersoll *et al.*, 1993).

The littoral and marine environments studied in this paper are effective to determine the tectonic conditions of provenance (Dickinson and Valloni, 1980). Furthermore, Ingersoll *et al.* (1993) states that in specific types of basin such as volcanic arcs of foreland basins, the local scale sample of first and second order is appropriated. Table 2 shows the results of the detrital modes (point counting) obtained for the 37 thin sections we analyzed. We built the ternaries diagrams (Fig. 7) proposed by Dickinson and Suczek (1979) to characterize the possible source area for the Río Belgrano, Río Tarde and Kachaike formations.

## 7. Results

We analyze first the results of the counting from each profile, from base to top, according to each formation. Then we look for tendencies from North to South in an attempt to determinate the sedimentary sources. Figure 7 shows the ternary diagrams proposed by Dickinson *et al.* (1983) and the modal components of the analyzed samples plotting.

### Río Oro profile

In the QFL diagram the samples of Río Belgrano Formation show a strong tendency since most of them plot in the recycled orogen field (Fig. 7a). There are two samples in the dissected and transitional arc fields. In the Qm-F-Lt diagram most of samples lay in the quartzose recycled field, while there are one in each of the dissected arc, transitional arc and transitional recycled orogen fields (Fig. 7b).

In this profile, the petrographic analysis revealed a higher percentage of sedimentary and metamorphic lithics than of volcanics lithics.

### Río Belgrano profile

The samples of Río Belgrano plotted in the diagram QFL are also concentrated in the recycled orogen field, although three samples plot in the transitional arc and dissected arc fields (Fig. 7a). In the Qm-F-Lt diagram the samples vary from dissected arc, mixed, transitional to quartzose recycled fields, without a clear tendency (Fig. 7b).

The relation between lithic fragments shows mainly a volcanic and metamorphic origin in a variable proportion, and subordinated sedimentary lithics.

### Estancia Los Ñires profile

The diagram QFL shows clustering in the recycled orogen field for the Río Mayer and Belgrano formations (Fig. 7a). The samples from the Kachaiké Formation are in the recycled orogen and transitional arc fields. On the Qm-F-Lt diagram the samples from the Río Mayer and Río Belgrano formations lay in the quartzose recycled to transitional recycled orogen fields (Fig. 7b). Samples from Kachaiké Formation plot in the transitional recycled orogen and transitional arc fields.

The lithic fraction is dominated by sedimentary and volcanic fragments, and subordinated clasts of metamorphic origin.

### **Arroyo Potranquitas profile**

Río Mayer and Río Belgrano formations lay in the field of recycled orogen for the QFL diagram (Fig. 7a) and quartzose recycled orogen field for the Qm-F-Lt diagram (Fig. 7b). Kachaiké Formation samples plot between recycled orogen and dissected arc fields.

The volcanic fragments compose around ~85% of the lithic fraction, with subordinated low-grade metamorphic and sedimentary lithics.

### **General tendencies**

The Río Mayer Formation is clearly clustered in the recycled orogenic (QFL) - quartzose recycled (QmFLt) fields. The Río Belgrano Formation is clustered in two clear groups when all the profile are considered (Fig. 7): Group one, with a predominant content of quartz plot in the recycled orogenic (QFL) and quartzose recycled (QmFLt) fields; a Group two with a greater proportion of lithics and feldspars is dispersed between the arcs fields and transitional recycled fields. Samples from the Río Tarde and Kachaiké formations can also be divided in those two groups defined for the Río Belgrano Formation (Fig. 7).

We therefore define two evident groups, interspersed along the stratigraphic column. Group one with a great proportion of quartz, is clustered on the upper fields of the diagrams, indicating quartzose recycled orogen sources. Group two with greater proportion of lithics and feldspars, indicate mixed sources that also includes a magmatic arc and a recycled orogen. The fluctuating proportions of components are shown in the Table 2, where samples are arranged in stratigraphic order for each profile.

We recognized an increase of the relative proportion of lithics volcanic fragments toward the southern profiles.

## **8. Discussion and conclusions**

The detailed petrographic analysis of the Lower Cretaceous depocenter for the northern Austral basin of Patagonia indicates predominant metamorphic basement sources with provenance field from a quartzose recycled orogen. We also detected interspersed events where the proportion of lithics fragments increased. The recognized lithics are predominantly metamorphic in the northern profiles and volcanic to the south.

Possible detritus sources from metamorphic origin correspond to the sedimentary and metasedimentary late Paleozoic basement. Known as Río Lácteo or Bahía La Lancha

formations in Argentina and Eastern Andes Metamorphic Complex (EAMC) in Chile, these low grade metamorphic rocks contain quartz, albite, white mica, and chlorite (Hervé *et al.*, 2008).

The metamorphic lithics further corroborates the basement source for the northern profiles and the Lago Posadas and Río Belgrano area, in agreement with the previously proposed uplift and exhumation of the surrounding basement blocks. In the northern Patagonian Andes there is a contractional phase during the Aptian evidence by a regional unconformity (Folguera and Iannizzotto, 2004; Suárez *et al.*, 2010) that also could have exposed methamorphic rocks.

The volcanic lithics are potentially linked to the synrift Jurassic magmatism or the active volcanic arc. These volcanic rocks could come from thrusts located to the West of the depocenter that exposed the Quemado Complex or may be related to an increase in volcanic activity. The volcanic rocks could also come from the synrift of the Deseado Massif, since both sequences has the same lithology (Pankhurst *et al.*, 2000). To the West, the contemporaneous volcanism is from Ibañez and Tobífera formations during the Jurassic. To the North Patagonian Massif, an equivalent volcanic unit for the V1 stage corresponds to the Lonco Trapial Formation (Feraud *et al.*, 1999; Zaffarana and Somoza, 2012; Cúneo *et al.*, 2013). To the North Patagonian Andes, the Batholith in the Bariloche area has U-Pb zircon ages between 170-150 Ma (Castro *et al.*, 2011). Based on the volcanism links, we consider the Quemado Complex and the Deseado Massif as the main sources because of their spatial locations: they're the closest potential sources at the regional scale.

We found very low proportions of potassium feldspars in the petrographic analysis of the sandstones, neither plutonic texture in the studied conglomerates clasts (Fig. 8a). These features allow us to discard the Early Jurassic Subcordilleran Batholith (Gordon and Ort, 1993; Rapela *et al.*, 2005) as source for the lithics of the recycled orogen field. Also, we couldn't assigned them to the contemporaneous volcanic acid suites because of the scarce samples with magmatic arc provenance (Fig. 7).

Recent U-Pb ages of detrital zircon samples obtained in the same units (Ghiglione *et al.*, 2015) suggests a strong correlation with the petrographic analysis. According to patterns of U-Pb ages on zircon, three groups are distinguished (Fig. 8b): a group between 140 and 120 Ma assigned to a volcanic arc active during Lower Cretaceous sedimentation; a group between 188 and 145 Ma corresponding to volcanics from El Quemado Complex, and a third Paleozoic-Precambrian group from basement sources. The two younger

groups represent the volcanic lithics, and the older group the metamorphic lithics as described in our petrographic analysis.

In summary, our study shows that the particular Lower Cretaceous continental depocenter developed in the northern Austral basin received mainly basement detritus consistent with its previously proposed synorogenic character (Suárez *et al.*, 2010). Even though the orogen recycled samples could also come from the northern Patagonian or the Subcordilleran Batholith, we dismiss such source of sediments because of the low percentage of potassium feldspars and the absence of plutonic textures. The sporadic apparition of volcanic detritus is most likely associated to episodic contemporaneous source from the volcanic arc.

### **Acknowledgments**

This work has been carried out by the financial support of grant projects Agencia PICT-2013-1291 and CONICET PIP 2014-2016 0653 awarded to M.C. Ghiglione. We want to acknowledge Dra. Sonia Quenardelle for granting access to a Swift point counter. The authors are grateful to Parques Nacionales of Argentina for permitting access to *Perito Moreno* National Park. Special thanks to the park rangers at Lago Belgrano, *Comisión de Fomento de Hipólito Yrigoyen*, Estancia Los Ñires, and the people of Lago Posadas and Familia Fortuny for allowing access to outcrops, kind logistical support and assistance. We want to acknowledge Dr. Guido M. Gianni and an anonymous reviewer, who substantially helped us to improved the paper. This is contribution R-000 of the Instituto de Estudios Andinos Don Pablo Groeber (UBA-CONICET).



## REFERENCES

- Aguirre-Urreta, M. B., 2002. Invertebrados del Cretácico inferior. In M. J. Haller (Ed.), *Geología y Recursos Naturales de Santa Cruz. Relatorio 15 Congreso Geológico Argentino*, pp. 439-459.
- Aguirre-Urreta, M.B., 1990. Paleogeography and biostratigraphy of the Austral basin in Argentina and Chile: An appeal for sound systematic. *Episodes* 13, 247-255.
- Aguirre-Urreta, M.B., Ramos, V.A., 1981. Estratigrafía y Paleontología de la Alta Cuenca del Río Roble, provincia de Santa Cruz. 8° Congreso Geológico Argentino, Actas III: 101-132, San Luis.
- Arbe, H.A., 2002. Análisis estratigráfico del Cretácico de la Cuenca Austral, in Haller, M.J., ed., *Geología y Recursos Naturales de Santa Cruz: XV Congreso Geológico Argentino*, p. 103–128.
- Arbe, H.A., 1986. El Cretácico de la Cuenca Austral: sus ciclos de sedimentación, UBA, Tesis doctoral, 334 p., Buenos Aires.
- Archangelsky, A., Llorens, M., 2005. Palinología de la Formación Kachaike, Cretácico Inferior de la Cuenca Austral, provincia de Santa Cruz 2: Esporas. *Ameghiniana*, 42, 311-328.
- Augustsson, C., Münker, C., Bahlburg, H., Fanning, C.M., 2006. Provenance of late Palaeozoic metasediments of the SW South American Gondwana margin: a combined U–Pb and Hf-isotope study of single detrital zircons. *Journal of the Geological Society*, 163, 983-995.
- Bianchi, J.L., 1967. Informe preliminar acerca de los perfiles estratigráficos realizados en el sector occidental de la Cuenca Austral, durante las campañas 1964-65 y 1965-66. *Yacimientos Petrolíferos Fiscales*, (inédito).
- Biddle, K.T., Uliana, M.A., Mitchum, R.M., Fitzgerald, M.G., Wright, R.C., 1986. The stratigraphy and structural evolution of the central and eastern Magallanes Basin, southern South America. In: Allen, A. Homewood, P. (Eds), *Foreland Basins*, Blackwell Scientific Publications, London: *Int. Assoc. Sediment. Spec. Pub.*, 8, p. 41-61.
- Calderón, M., Fosdick, J.C., Warren, C., Massonne, H.-J., Fanning, C.M., Fadel Cury, L., Schwanethal, J., Fonseca, P.E., Galaz, G., Gaytán, D., Hervé, F., 2012. The low-grade Canal de las Montañas Shear Zone and its role in the tectonic emplacement of the Sarmiento Ophiolitic Complex and Late Cretaceous Patagonian Andes orogeny, Chile. *Tectonophysics*, 524–525, 165–185.
- Castro, A., Moreno-Ventas, I., Fernández, C., Vujovich, G., Gallastegui, G., Heredia, N., Martino, R.D., Becchio, R., Corretgé, L.G., Díaz-Alvarado, J., Such, P., García-Arias, M., Liu, D.Y., 2011. Petrology and SHRIMP U–Pb zircon geochronology of Cordilleran granitoids of the Bariloche area, Argentina. *Journal of South American Earth Science*, 32 (4), 508–530.  
doi:10.1016/j.jsames.2011.03.011
- Cúneo, R., Ramezani, J., Scasso, R., Pol, D., Escapa, I., Zavattieri, A. M., Bowring, S. A., 2013. High-precision U–Pb geochronology and a new chronostratigraphy for the Cañadón Asfalto Basin, Chubut, central Patagonia: Implications for terrestrial faunal and floral evolution in Jurassic. *Gondwana Research*, 24(3), 1267-1275.
- Dalziel, I.W., Lawver, L.A., Norton, I.O., Gahagan, L.M., 2013. The Scotia Arc: genesis, evolution, global significance. *Annual Review of Earth and Planetary Sciences* 41, 767-793.
- Dickinson, W.R., Suczek, C., 1979. Plate tectonics and sandstone composition: American Association of Petroleum Geologists, *Bulletin*, v. 63, p. 2164–2182.
- Dickinson, W., Valloni, R., 1980. Plate settings and provenance sands in modern ocean basins. *Geology*, 8: 82-86.
- Dickinson, W.R., Beard, L.S., Brakenridge, G.R., Erjavec, J.L., Ferguson, R.C., Inman, K.F., Knepp, R.A., Lindberg, F.A., Ryberg, P.T., 1983. Provenance of North American Phanerozoic sandstones in relation to tectonic setting. *GSA* 94: 222-235.
- Dott, R. H. J., 1964. Wacke, graywacke, and matrix-what approach to immature sandstones classification? *Journal of Sedimentary Petrology*, 34: 625-632.



- Feraud, G., Alric, V., Fornari, M., Bertrand, H., Haller, M., 1999.  $^{40}\text{Ar}/^{39}\text{Ar}$  dating of the Jurassic volcanic province of Patagonia: migrating magmatism related to Gondwana break-up and subduction. *Earth and Planetary Science Letters* 172, 83-96.
- Fildani, A., Hessler, A.M., 2005. Stratigraphic record across a retroarc basin inversion: Rocas Verdes Magallanes Basin, Patagonian Andes. *Geol. Soc. Am. Bull.*, 117, 1596–1614.
- Fildani, A., Cope, T.D., Graham, S.A., Wooden, J.L., 2003. Initiation of the Magallanes foreland basin: timing of the southernmost Patagonian Andes orogeny revised by detrital zircon provenance analysis. *Geology*, 31, 1081–1084.
- Folguera, A., Iannizzotto, N.F., 2004. The lagos La Plata and Fontana fold-and-thrust belt: long-lived orogenesis at the edge of western Patagonia. *Journal of South American Earth Sciences* 16, 541–566.
- Folk, R.L., Andrews, P.B., Lewis, D.W., 1970. Detrital sedimentary rock classification and nomenclature for use in New Zealand. *New Zealand Journal Geology and Geophysics* 13: 937-968.
- Fosdick, J.C., Romans, B.W., Fildani, A., Bernhardt, A., Calderón, M., Graham, S.A., 2011. Kinematic evolution of the Patagonian retroarc fold-and-thrust belt and Magallanes foreland basin, Chile and Argentina,  $51^{\circ}$ – $300^{\circ}$  S. *Geol. Soc. Am. Bull.*, 123, 1679–1698.
- Furque, G., Camacho, H.H., 1972. El Cretácico superior y Terciario de la región austral del lago Argentino, provincia de Santa Cruz. *Actas 4as Jornadas Geológicas Argentinas*, 3: 61-76. Buenos Aires.
- Ghiglione, M.C., Naipauer, M., Sue, C., Barberón, V., Valencia, V., Aguirre-Urreta, B., Ramos, V.A., 2015. U-Pb zircon ages from the northern Austral basin and their correlation with the Early Cretaceous exhumation and volcanism of Patagonia. *Cretaceous Research*, 55, 116-128.
- Ghiglione, Matías C., Naipauer, M., Barberón, V., Ronda, G., Pereyra-Fernández, E., Ramos, V. A., Aguirre-Urreta, B., Valencia, V., 2014a. Early Cretaceous (Aptian) uplift of Patagonia recorded on detrital zircons population from the Patagonian Andes. *XIX Congreso Geológico Argentino*, Córdoba.
- Ghiglione, M.C., Likerman, J., Barberón, V., Giambiagi, L., Aguirre-Urreta, M.B., Suarez, F., 2014b. Geodynamic context for the deposition of coarse-grained deep-water axial channel systems in the Patagonian Andes. *Basin Research*. DOI: 10.1111/bre.12061.
- Giacosa, R., Zubia, M., Sánchez, M., Allard, J., 2010. Meso-Cenozoic tectonics of the southern Patagonian foreland: structural evolution and implications for Au–Ag veins in the eastern Deseado Region (Santa Cruz, Argentina). *J. S. Am. Earth Sci.* 30, 134–150.
- Giacosa, R.E., Márquez, M.M., 2002. El basamento paleozoico de la Cordillera Patagónica. In: Haller, M.J. (ED.). *Geología y Recursos Naturales de Santa Cruz. Relatorio 15º Congreso Geológico Argentino*, 45-55.
- Gianni, G., Navarrete, C., Orts, D., Tobal, J., Folguera, A., Giménez, M., 2015. Patagonian broken foreland and related synorogenic rifting: The origin of the Chubut Group Basin. *Tectonophysics*, 649, 81-99.
- Gordon, A., Ort, M. H., 1993. Edad y correlación del plutonismo subcordillerano en las provincias de Río Negro y Chubut ( $41^{\circ}$ – $42^{\circ}$   $30'$ LS). *Congreso Geológico Argentino*, 12, 120-127.
- Guler, M.V., Archangelsky, S., 2006. Albian dinoflagellate cysts from the Kachaike Formation, Austral Basin, southwest Argentina. *Rev. Museo Arg. de Ciencias Naturales Nueva Serie*, 8, 179-184.
- Hatcher, J.B., 1900. Sedimentary rocks of Southern Patagonia. *American Journal Science*, 9, 4: 85-108. New Haven.
- Hatcher, J.B., 1897. Geology of Southern Patagonia. *American Journal Science*, 4, 4: 327-354. New Haven.
- Heine, C., 2007. Formation and evolution of intracontinental basins, Ph.D. Thesis, The University of Sydney, Australia.
- Heine, C., Zoethout, J., Müller, R.D., 2013. Kinematics of the South Atlantic rift. *Solid Earth*, 4, 215–253, 2013. doi:10.5194/se-4-215-2013

- Hervé, F., Pankhurst, R.J., Fanning, C.M., Calderón, M., Yaxley, G.M., 2007. The South Patagonian batholith: 150 My of granite magmatism on a plate margin. *Lithos*, 97, 373–394.
- Hervé, F., Calderón, M., Faúndez, V., 2008. The metamorphic complexes of the Patagonian and Fuegian Andes. *Geologica Acta* 6, 43-53.
- Homovc, J.F., 1980. Estudio estratigráfico de la comarca ubicada en el margen septentrional de la meseta Belgrano, en la zona del Lago Posadas, Dpto. Río Chico, provincia de Santa Cruz. Tesis de licenciatura, Universidad de Buenos Aires, (unpublished). Buenos Aires.
- Ingersoll, R.V., 1978. Petrofacies and petrologic evolution of the Late Cretaceous fore-arc basin, northern and central California. *Journal of Geology* 86, 335–352.
- Ingersoll, R.V., Kretchmer, A.G., Valles, P.K., 1993. The effect of sampling scale on actualistic sandstone petrofacies: *Sedimentology*, v. 40, 937–953.
- Ingersoll, R. V., Bullard, T. F., Ford, R. L., Grimm, J. P., Pickle, J. D., Sares, S. W. 1984. The effect of grain size on detrital modes; a test of the Gazzi-Dickinson point-counting method. *Journal of Sedimentary Research*, 54(1), 103-116.
- Katz, H.R., 1963. Revision of Cretaceous stratigraphy in Patagonian Cordillera of Ultima Esperanza, Magallanes Province, Chile. *Am. Assoc. Petrol. Geol. Bull.*, 47, 506-524.
- Kraemer, P.E., 1998. Structure of the Patagonian Andes. Regional balanced cross section at 50° S.L. Argentina. *Int. Geol. Rev.*, 40, 896–915.
- Kraemer P.E., Riccardi, A.C., 1996. Estratigrafía de la región comprendida entre los lagos Argentino y Viedma (49°40–50°10 lat. S), Provincia de Santa Cruz. *Rev. Asoc. Geol. Arg.*, 52, 333–360.
- Kraemer, P.E., Ploszkiewick, J.V., Ramos, V.A., 2002. Estructura de la Cordillera Patagónica Austral entre los 46° y 52° S. En M.J. Haller (Ed.), *Geología y Recursos Naturales de Santa Cruz. Relatorio del 15° Congreso Geológico Argentino. El Calafate, I (22): 353– 364*, Buenos Aires.
- Macellari, C.E., Barrio, C.A., Manassero, M.J., 1989. Upper Cretaceous to Paleocene depositional sequences and sandstone petrography of southwestern Patagonia (Argentina and Chile): *Journal of South American Earth Sciences*, v. 2, p. 233–239.
- Manassero, M.J., 1988. Petrología y procedencia de las areniscas cretácicas superiores de la Cuenca Austral Argentina: *Asociación Geológica Argentina, Revista*, v. 43, 175–187.
- Marsaglia, K., Ingersoll, R., 1992. Compositional trends in arc-related, deep marine sand and sandstone: a reassessment of magmatic provenance: *Geological Society of America, Bulletin*, v. 104, p. 1637–1649.
- Pankhurst, R.J., Rapela, C.W., Loske, W.P., Fanning, C.M., Márquez, M., 2003. Chronological study of the pre-Permian basement rocks of southern Patagonia. *Journal of South American Earth Sciences*, 16, 27–44.
- Pankhurst, R.J., Riley, T.R., Fanning, C.M., Kelley, S.P., 2000. Episodic silicic volcanism in Patagonia and the Antarctic Peninsula: chronology of magmatism associated with the break-up of Gondwana. *J. Petrol.*, 41, 605–625.
- Panza, J., Sacomanni, L., Cobos, J., 2003. Mapa Geológico de la Provincia de Santa Cruz. Instituto de Geología y Recursos Minerales, Servicio Geológico y Minero Argentino. Buenos Aires.
- Peroni, G., Cagnolatti, M., Pedrazzini, M., 2002. Cuenca Austral: marco geológico y reserva histórica de la actividad petrolera. In *Simposio Rocas Reservorio de las Cuencas Productivas de la Argentina*. (Schiuma, M.; Hinterwimmer, G.; Vergani, G.; editors). *Congreso de Exploración y Desarrollo de Hidrocarburos*, No. 5: 11-19. Mar del Plata.
- Pöthe de Baldis, E.D., 1981. Análisis palinológico de muestras de la Hoja 52 a-b, Lago Pueyrredón, provincia de Santa Cruz. Servicio Geológico Nacional, (unpublished). Buenos Aires.
- Ramos, V.A., 2002. Evolución tectónica. In MJ Haller (Ed.), *Geología y Recursos Naturales de Santa Cruz. Relatorio XV Congreso Geológico Argentino I-23*, pp. 365–387.
- Ramos, V.A., 1989. Foothills structure in Northern Magallanes Basin, Argentina, *Am. Assoc. Petrol. Geol. Bull.*, 73, 887– 903.

- Ramos, V.A., 1979. Tectónica de la región del río y lago Belgrano, Cordillera Patagónica, Argentina. 2° Congreso Geológico Chileno, Actas I ( B):1-32, Santiago.
- Ramos, V.A., Drake, R., 1987. Edad y significado de la Formación Rio Tarde (Cretácico), Lago Posadas, Provincia de Santa Cruz. X Congreso Geológico Argentino, Actas I, 143-147, Buenos Aires.
- Rapela, C. W., Pankhurst, R. J., Fanning, C. M., Hervé, F., 2005. Pacific subduction coeval with the Karoo mantle plume: the Early Jurassic Subcordilleran Belt of northwestern Patagonia. Special Publications. In: Vaughan, A.P.M., Leat, P.T., Pankhurst, R.J. (Eds.), *Terrane Processes at the Margins of Gondwana*, 246. Geological Society, London, 217-239.
- Rebassa, M., 1982. Análisis estratigráfico y paleoambiental de la Formación Kachaike, aflorante en la barranca epónima, provincial de Santa Cruz. M.Sc. Thesis, Universidad de Buenos Aires.
- Relañez, R.G., 2014. Geología del sector de la Estancia Tucú-Tucú, provincia de Santa Cruz, Argentina. Trabajo Final de Licenciatura, FCEN-UBA. Buenos Aires.
- Riccardi, A., 1971. Estratigrafía en el oriente de la Bahía de la Lancha, Lago San Martín, Santa Cruz, Argentina. *Revista Museo de la Plata (nueva serie)*, 7, 61 p. La Plata.
- Riccardi, A.C., Roller, E., 1980. Cordillera Patagónica Austral. II Simposio de Geología Regional Argentina, Academia Nacional de Ciencias, Córdoba, 1173-1306.
- Riggi, J. C., 1957. Resumen geológico de la zona de los lagos Pueyrredón y Posadas, provincia de Santa Cruz. *Revista Asociación Geológica Argentina*, 12 (2): 65-97. Buenos Aires.
- Robbiano, J.A., Arbe, H., Gangui, A., 1996. Cuenca Austral Marina. In *Geología y Recursos Naturales de la Plataforma Continental Argentina* (Ramos, V.A.; Turic, M.A.; editores). Congreso Geológico Argentino, No. 13 y Congreso de Exploración de Hidrocarburos, No. 3, Relatorio, 323-342. Buenos Aires.
- Romans, B.W., Fildani, A., Hubbard, S.M., Covault, J.A., Fosdick, J.C., Graham, S.A., 2011. Evolution of deepwater stratigraphic architecture, Magallanes Basin, Chile. *Mar. Petrol. Geol.*, 28, 612–628.
- Russo, A., Flores, M.A., 1972. Patagonia Austral Extrandina. En: Leanza, A. F. (Ed.): Segundo Simposio Geología Regional Argentina: 707- 725. Academia Nacional de Ciencias. Córdoba.
- Scasso, R.A., Limarino, C.O., 1997. Petrología y diagénesis de rocas clásicas. Asociación Argentina de Sedimentología publicación especial. 259 p. Buenos Aires.
- Spalletti, L.A., Blasi, A.M., Matheos, S.D., 1986. Estudio composicional de psefitas actuales de la Argentina y su significado tectónico. *Asociación Geológica Argentina Revista* 41 (3-4), 356–366.
- Spalletti, L.A., Queralt, I., Matheos, S.D., Colombo, F., Maggi, J., 2008. Sedimentary petrology and geochemistry of siliciclastic rocks from the upper Jurassic Tordillo Formation (Neuquén Basin, western Argentina): Implications for provenance and tectonic setting. *Journal of South American Earth Sciences*, 25,440-463.
- Suárez, M., De La Cruz, R., Bell, M., Demant, A., 2010. Cretaceous slab segmentation in southwestern Gondwana. *Geological Magazine*, 147(02), 193-205.
- Thomas, C.R., 1949. Geology and petroleum exploration in Magallanes Province, Chile. *Am. Assoc. Petrol. Geol. Bull.*, 33, 1553-1578.
- Tunik, M., Folguera, A., Naipauer, M., Pimentel, M.M., Ramos, V.A., 2010. Early uplift and orogenic deformation in the Neuquén Basin: constraints on the Andean uplift from U–Pb and Hf isotopic data of detrital zircons. *Tectonophysics* 489 (1–4), 258–273. doi.org/10.1016/j.tecto.2010.04.017.
- Tunik, M.A., Vietto, M.E., Sciutto, J.C., Estrada, E., 2004. Procedencia de areniscas del Grupo Chubut en el área central de la Sierra de San Bernardo. Análisis preliminar. *Revista de la Asociación Geológica Argentina*, 59(4), 601-606.
- Uliana, M.A., Biddle, K.T., 1988. Mesozoic-Cenozoic paleogeographic and geodynamic evolution of southern South America. *Rev. Bras. Geociên.*, 18, 172–190.
- Varela, A.N., Poiré, D.G., Martin, T., Gerdes, A., Goin, F.J., Gelfo, J.N., Hoffmann, S., 2012. U-Pb zircon constraints on the age of the Cretaceous Mata Amarilla Formation, Southern Patagonia,

- Argentina: its relationship with the evolution of the Austral Basin. *Andean Geology*, 39(3), 359-379.
- Wilson, T.J., 1991. Transition from Back-Arc to Foreland Basin Development in the Southernmost Andes - Stratigraphic Record from the Ultima-Esperanza-District, Chile. *Geological Society of America, Bulletin*, 103, 98-111.
- Zaffarana, C.B., Somoza, R., 2012. Palaeomagnetism and  $^{40}\text{Ar}/^{39}\text{Ar}$  dating from Lower Jurassic rocks in Gastre, central Patagonia: further data to explore tectonomagmatic events associated with the break-up of Gondwana. *Journal of the Geological Society of London*, 169(4):371-379.

ACCEPTED MANUSCRIPT

**FIGURE CAPTIONS**

**Figure 1:** Location of the study zone (black square) from high-resolution digital elevation model (DEM; Mercator projection, NASA-SRTM) showing sediment distribution from Austral basin. Patagonian basins and site locations mentioned in the text are also shown. Contours indicate foreland sediment thickness within the undeformed depocenters from seismic information in kilometers (from Heine, 2007; [www.basinatlas.com](http://www.basinatlas.com)). MFFS, Magallanes-Fagnano fault zone; RVB, Rocas Verdes Basin; TJ, Triple Junction.

**Figure 2:** Geological map of the western Austral Basin (Panza *et al.*, 2003) showing the location of measured sections and sampling localities: (1) Río Oro (2) Río Belgrano, (3) Ea. Los Ñires, and (4) Arroyo Potranquitas.

**Figure 3:** Lower Cretaceous continental basin between Lago Posadas and Arroyo Potranquitas (modified from Aguirre-Urreta and Ramos, 1981). The profiles are spatially located, with fossil data and U-Pb ages in zircons. Green line correlates the Río Belgrano Formation along the northern depocenter showing the first coarse grained deposits in the foreland.

**Figure 4:** Measured stratigraphic sections from north to south: Río Oro, Río Belgrano, Ea Los Ñires and Arroyo Potranquitas. See Fig. 2 for location. Red line correlates Río Belgrano Formation along the profiles.

**Figure 5:** Thin section photomicrographs of the Río Belgrano Formation sandstones in Río Oro profile: a) Metamorphic lithic (Lm), b) Volcanic lithic (Lv), c) and d) Volcanic lithic (Lv), with and without polarizer respectively. Cc: calcite cement. Red scale-bar is 0,1 mm.

**Figure 6:** Sandstone classification diagram (from Folk *et al.*, 1970) of the 37 thin-sections analyzed.

**Figure 7:** Provenance ternary Q-F-L (a) and Qm-F-Lt (b) diagrams (from Dickinson *et al.*, 1983) of the Río Mayer, Río Belgrano, Río Tarde and Kachaike formations sandstones from the 37 thin sections analyzed. Q: total quartz; F: feldspars; L: unstable lithics; Qm: monocrystalline quartz; Lt: total lithics.

**Figure 8:** a) Clast composition in the basal conglomerate of Río Tarde Formation, Río Oro profile. b) Pie chart showing percentage of detrital zircon ages and their possible source areas in the Patagonian Andes and extra-Andean Patagonia constructed with data from Ghiglione *et al.* (2015). V1, V2, V3: volcanic episodes (Pankhurst *et al.*, 2000). LC: Lower Cretaceous.

**Table 1:** Petrographic composition of the sandstones and key to recalculates modal parameters.

**Table 2:** Recalculated point-count data from the Río Mayer, Río Belgrano, Río Tarde and Kachaike formations.

ACCEPTED MANUSCRIPT

Table 1  
Petrographic composition of the sandstones and key to recalculated modal parameters

Symbol	Definition	Description
Qm	Monocrystalline quartz	Most grains are subangular to subrounded with straight to slight undulator extinction. Some quartz shows resorption embayments.
Qp	Polycrystalline quartz	Subrounded grains.
L	Unstable lithic grains	Volcanic clasts composed of quartz or feldspars. Their textures are porphyric with phenocrysts of quartz and feldspars. Matrix textures: pilotaxitic, trachytic and felsitic. Grains composed by quartz–mica with schistose texture are assigned to low-grade metamorphic grains, other with only quartz. Sedimentary clasts are in fewer amounts, they are fragments of limolites where quartz can be recognized.
Plg	Plagioclase feldspar	Subangular to subrounded grains unaltered, twinned.
FK	Potassium feldspar	Subangular grains of slightly altered orthoclase.
M	Minor components	Muscovite, biotite, chlorite, glauconite and dense minerals (opaque minerals, zircon)
Q	Total quartzose grains	Qm + Qp
Lt	Total lithic grains	L + Qp
F	Total feldspar grains	Plg + FK



Table 2  
Recalculated point-count data from the Río Mayer, Río Belgrano, Río Tarde and Kachaike formations sandstones.

Locality	Formation	Sample	Qm-F-Lt			Q-F-L			Classification
			Qm	F	Lt	Qt	F	L	
Río Oro	Río Tarde	RT4	42	1	57	74	1	25	Litharenite
		RT3	10	1	89	31	1	68	Litharenite
	Río Belgrano	RB2	32	22	46	34	22	44	Feldspatic litharenite
		RB1	13	29	58	13	29	58	Feldspatic litharenite
		RB3	59	11	30	61	11	28	Feldspatic litharenite
		RB8	74	6	20	81	6	13	Litharenite
		RB7	30	8	62	51	9	40	Litharenite
		RB5	56	15	29	63	15	22	Feldspatic litharenite
	RB4	63	12	25	66	12	22	Feldspatic litharenite	
Río Belgrano	Río Belgrano	RB13B	74	2	24	78	2	20	Litharenite
		RB12B	33	9	58	33	9	58	Litharenite
		RB11B	17	21	62	18	21	61	Litharenite
		RB10B	74	2	24	78	2	20	Litharenite
		RB9B	84	5	11	90	5	5	Sublitharenite
		RB8B	66	11	23	66	11	23	Feldspatic litharenite
		RB7B	34	19	47	39	19	44	Feldspatic litharenite
		RB6B	68	9	23	68	9	23	Feldspatic litharenite
		RB5B	60	7	33	60	7	33	Litharenite
		RB4B	30	19	51	33	19	48	Feldspatic litharenite
		RB3B	61	8	31	63	8	29	Litharenite
		RB2B	34	35	31	35	35	30	Litharenite feldspatic
		RM1	51	16	33	53	16	30	Feldspatic litharenite
Ea. Los Ñires	Kachaike	RB6Ñ	52	9	39	56	9	35	Litharenite
		RB5Ñ	24	16	60	30	16	54	Litharenite
	Río Belgrano	RB10Ñ	28	13	59	37	13	50	Litharenite
		RB9Ñ	59	9	32	66	9	25	Litharenite
		RB4Ñ	50	14	36	56	14	30	Feldspatic litharenite
		RB3Ñ	51	15	34	56	15	29	Feldspatic litharenite
		RB2Ñ	67	6	27	75	6	19	Litharenite
		RB1Ñ	73	5	22	78	5	17	Litharenite
	Río Mayer	RM1Ñ	87	1	12	92	1	7	Sublitharenite
	Arroyo Potranquitas	Kachaike	RB6P	33	39	28	33	39	28
RB5P			37	11	52	37	11	52	Litharenite
Río Belgrano		RB4P	76	9	15	79	9	12	Sublitharenite
		RB3P	68	9	23	70	9	21	Feldspatic litharenite
Río Mayer		RB2P	72	6	22	72	6	22	Litharenite
		RB1P	66	7	27	67	7	26	Litharenite

Qm: monocrystalline quartz; Q: total quartzose grains; F: total feldspar grains; L: unstable lithic grains; Lt: total lithic grains.

ACCEPTED MANUSCRIPT

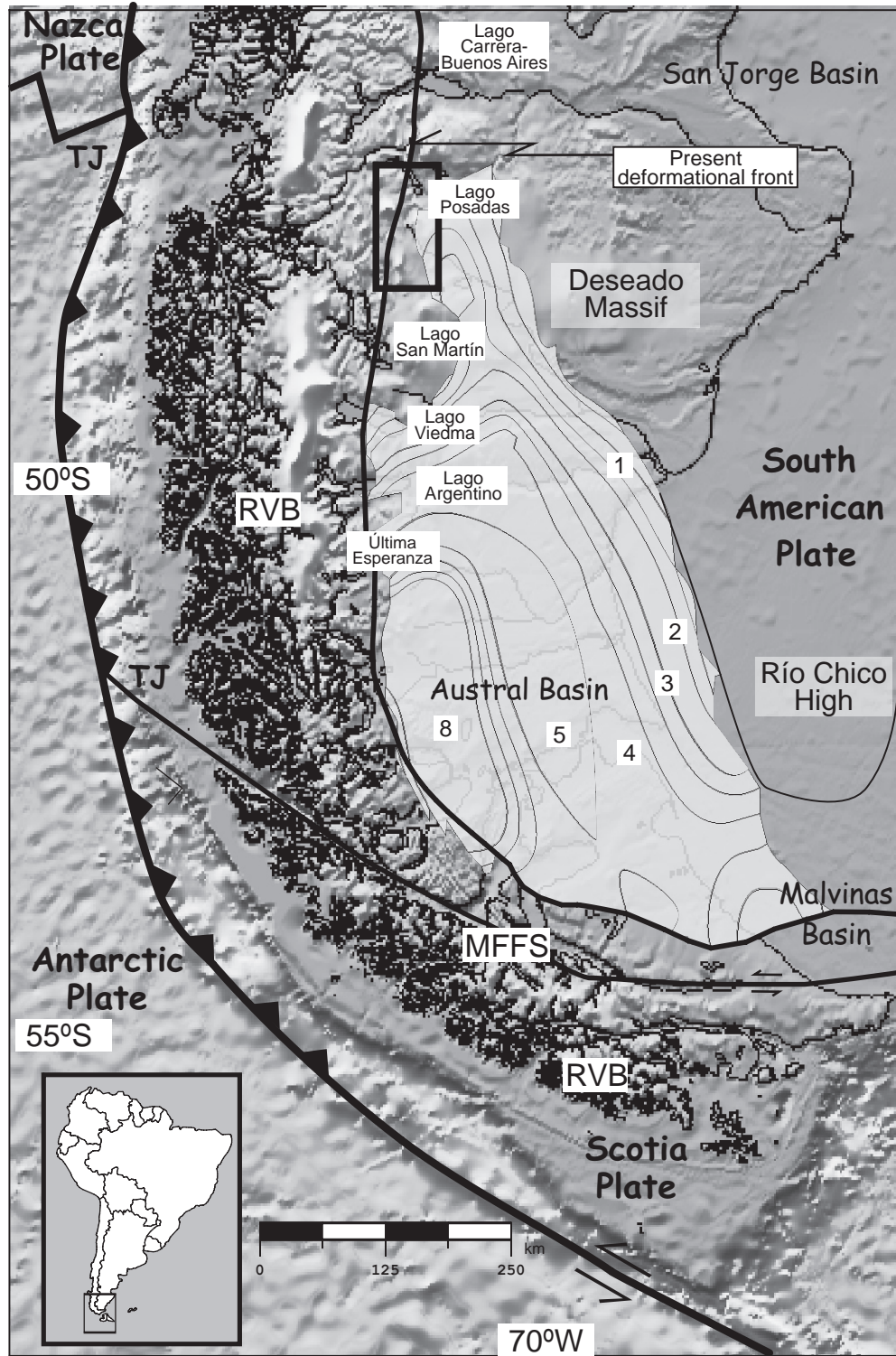


Figure 1



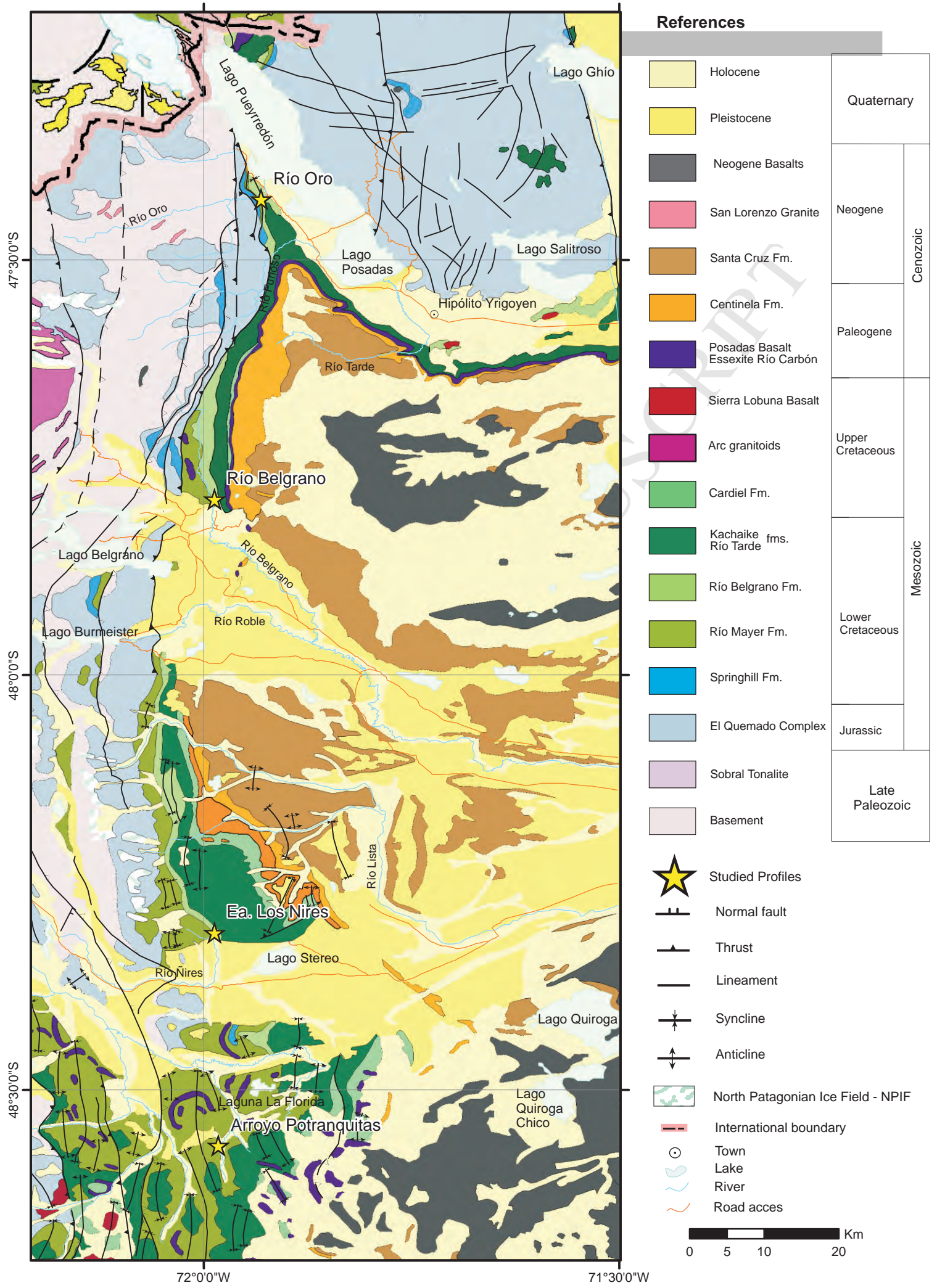
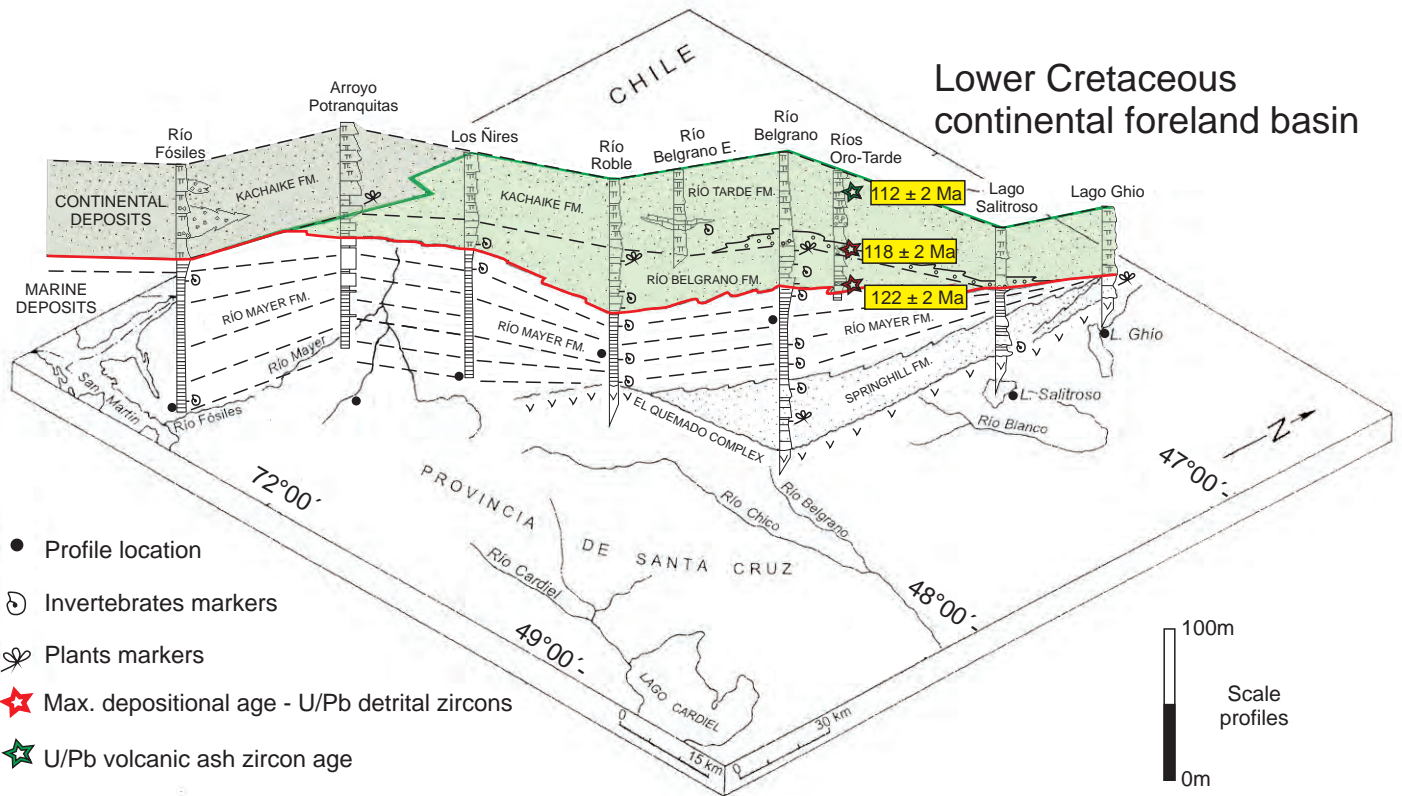


Figure 2

Lower Cretaceous continental foreland basin



ACCEPTED MS

Figure 3

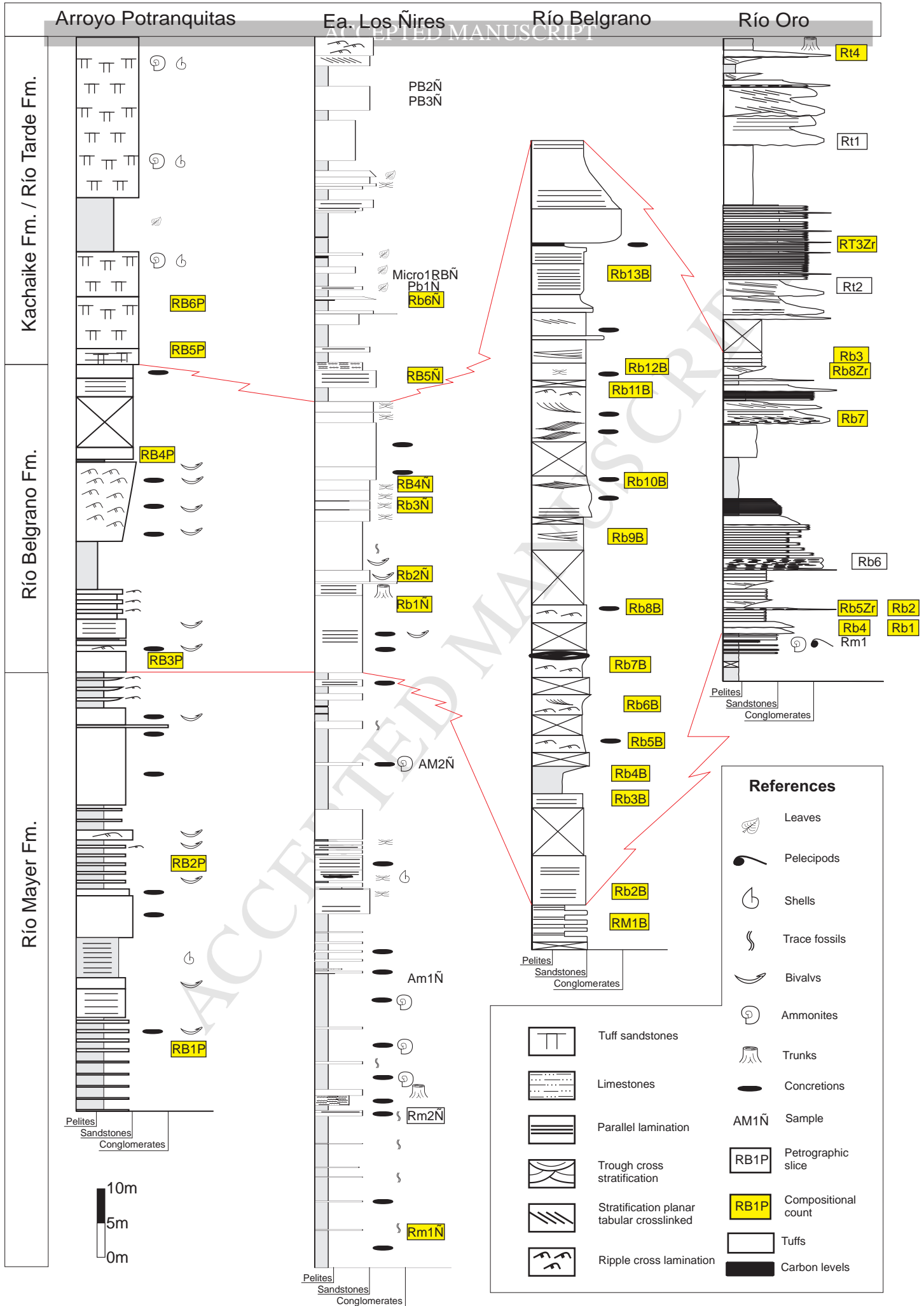


Figure 4



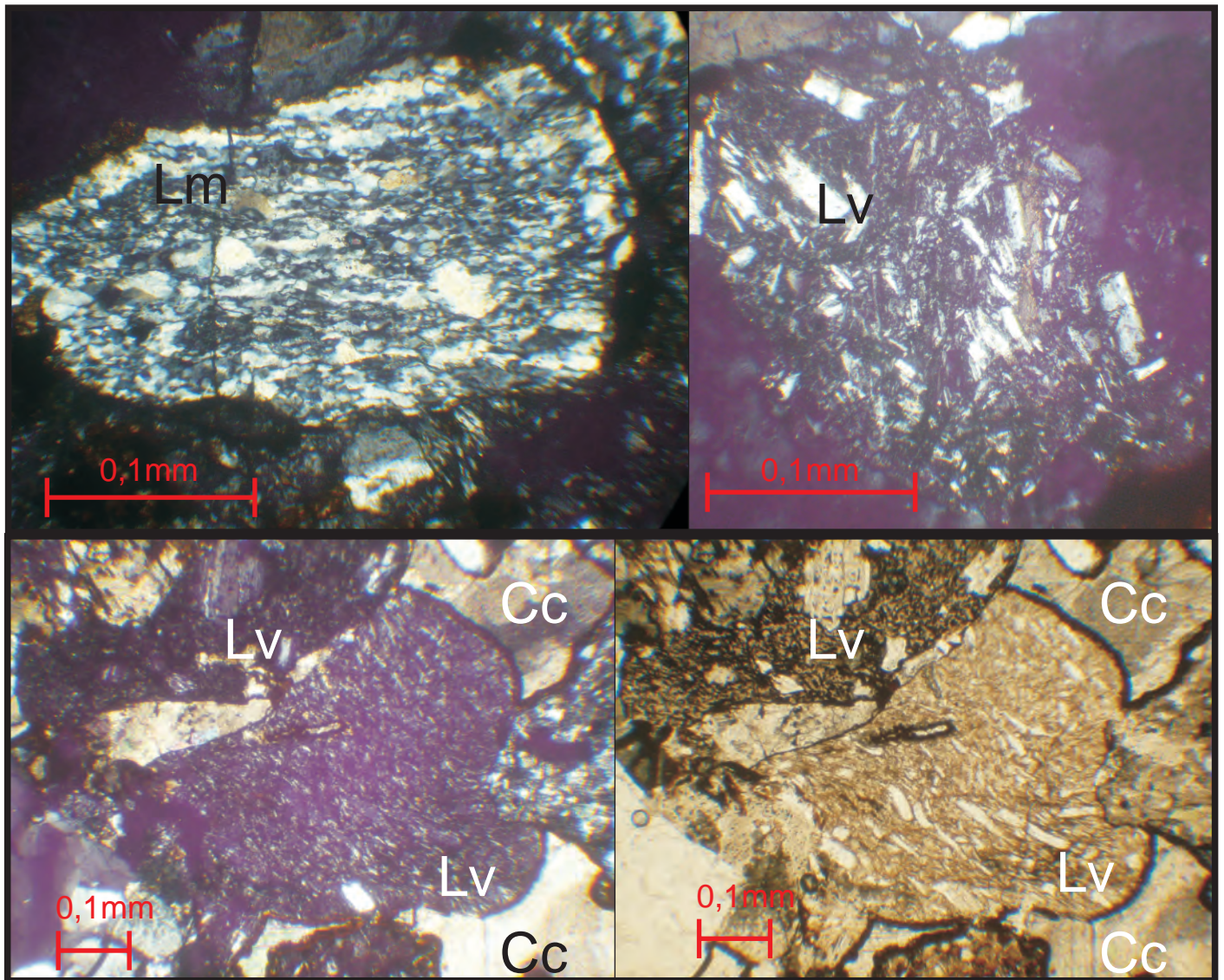


Figure 5

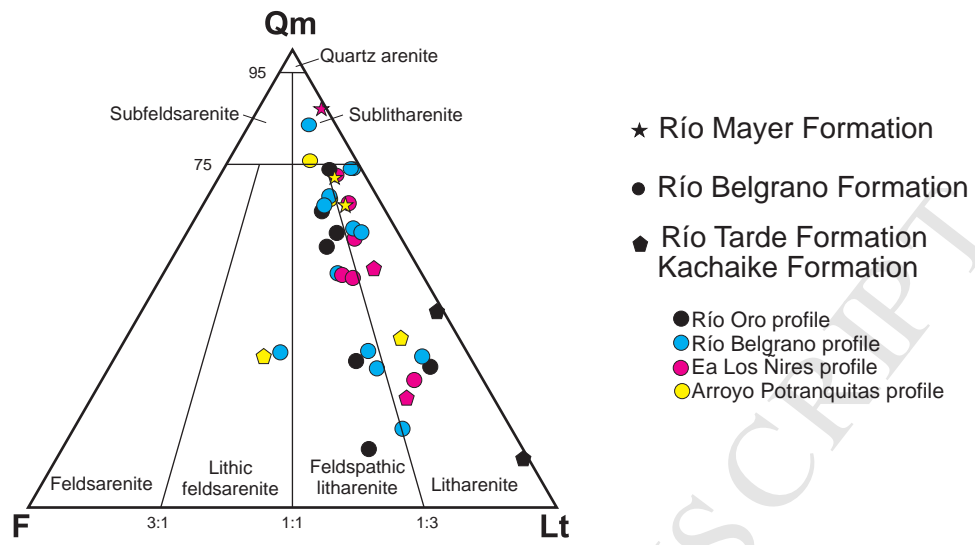


Figure 6



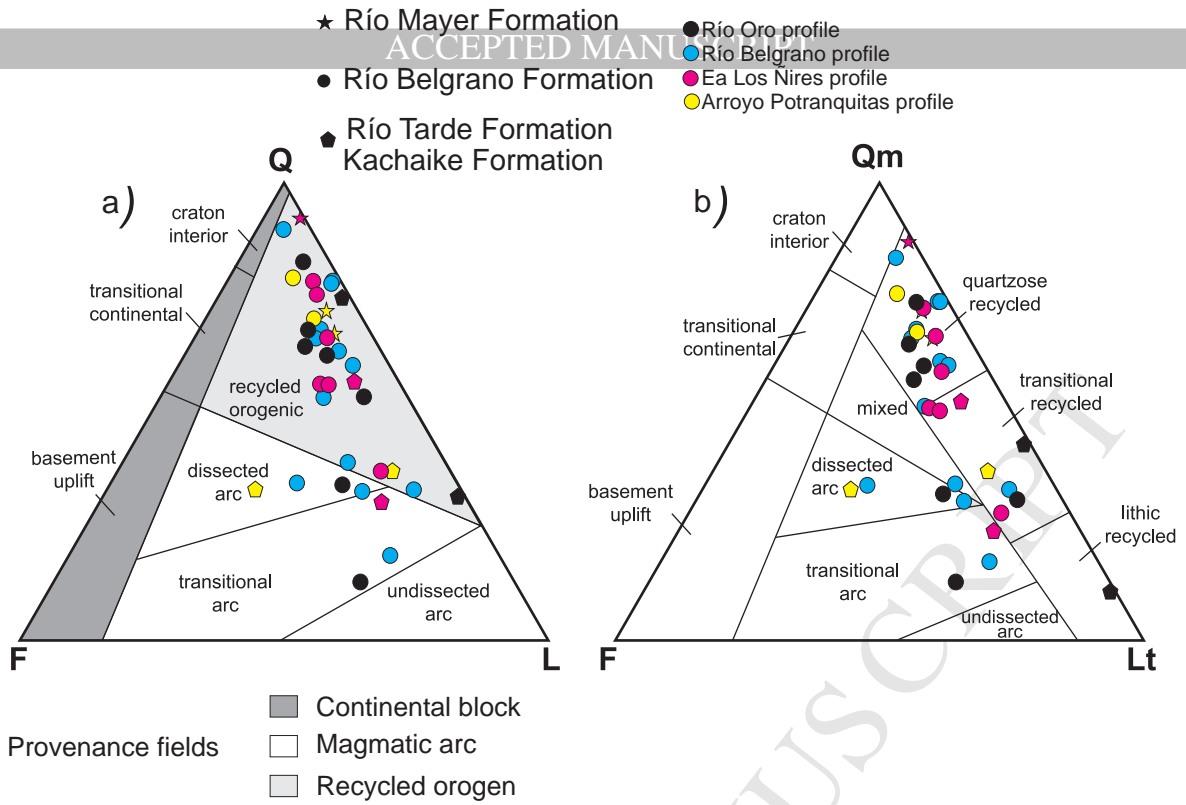


Figure 7

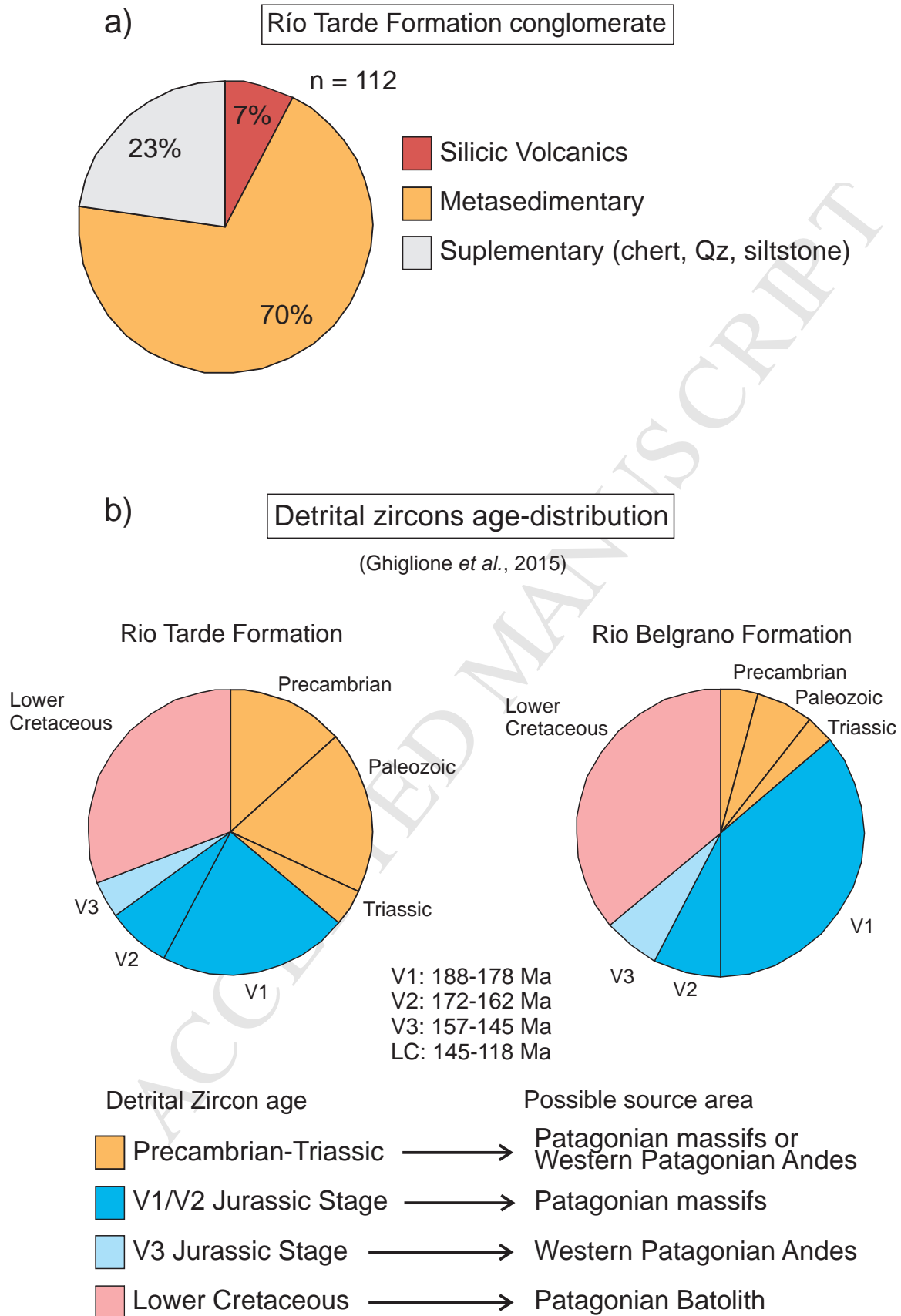


Figure 8

## Highlights

- Presentation of four stratigraphic profiles of the first coarse-grained regressive sequence along the northern Austral basin from Patagonia.
- Sedimentary petrography as tool to study the tectonic setting during the Lower Cretaceous.
- Provenance analysis shows mainly orogen recycled source and subordinated magmatic arc.
- Potential surrounding basement sources in agreement with proposed Aptian uplift and exhumation of Patagonia.