



# Expert consensus document from the European Society of Cardiology on catheter-based renal denervation<sup>†</sup>

**Felix Mahfoud<sup>1\*</sup>, Thomas Felix Lüscher<sup>2</sup>, Bert Andersson<sup>3</sup>, Iris Baumgartner<sup>4</sup>, Renata Cifkova<sup>5</sup>, Carlo DiMario<sup>6</sup>, Pieter Doevendans<sup>7</sup>, Robert Fagard<sup>8</sup>, Jean Fajadet<sup>9</sup>, Michel Komajda<sup>10</sup>, Thierry LeFèvre<sup>11</sup>, Chaim Lotan<sup>12</sup>, Horst Sievert<sup>13</sup>, Massimo Volpe<sup>14,15</sup>, Petr Widimsky<sup>16</sup>, William Wijns<sup>17</sup>, Bryan Williams<sup>18</sup>, Stephan Windecker<sup>19</sup>, Adam Witkowski<sup>20</sup>, Thomas Zeller<sup>21</sup>, and Michael Böhm<sup>1</sup>**

<sup>1</sup>Klinik für Innere Medizin III, Universitätsklinikum des Saarlandes, Homburg, Saar, Germany; <sup>2</sup>Department of Cardiology, Cardiovascular Center, University Hospital, Zurich, Switzerland; <sup>3</sup>Department of Cardiology, Sahlgrenska University Hospital, Gothenburg, Sweden; <sup>4</sup>Swiss Cardiovascular Center, Clinical and Interventional Angiology, University and University Hospital Bern, Bern, Switzerland; <sup>5</sup>Center for Cardiovascular Prevention, Charles University Medical School I and Thomayer Hospital, Prague, Czech Republic; <sup>6</sup>NIHR Cardiovascular BRU, Royal Brompton & Harefield NHS Trust, London, UK; <sup>7</sup>Department of Cardiology, UMCU Utrecht the Netherlands and ICIN Utrecht, Utrecht, the Netherlands; <sup>8</sup>Department of Cardiovascular Diseases, KU Leuven University, Leuven, Belgium; <sup>9</sup>Interventional Cardiology Unit, Clinique Pasteur, Toulouse, France; <sup>10</sup>Pitie Salpetriere Hospital, Department of Cardiology, University Pierre et Marie Curie, Paris, France; <sup>11</sup>Institut Cardiovasculaire Paris Sud, Hopital Jacques Cartier, Massy, France; <sup>12</sup>Heart Institute, Hadassah-Hebrew University Medical Center, Jerusalem, Israel; <sup>13</sup>CardioVascular Center Frankfurt, Sankt Katharinen, Frankfurt, Germany; <sup>14</sup>Division of Cardiology, Department of Clinical and Molecular Medicine, University of Rome Sapienza, Sant'Andrea Hospital, Rome, Italy; <sup>15</sup>IRCCS Neuromed, Pozzilli (IS), Italy; <sup>16</sup>Cardiocenter, Charles University, Hospital 'Royal Vineyards', Prague, Czech Republic; <sup>17</sup>Cardiovascular Centre Aalst, Aalst, Belgium; <sup>18</sup>Institute of Cardiovascular Science, University College London, London, UK; <sup>19</sup>Klinik für Kardiologie, University and University Hospital Bern, Bern, Switzerland; <sup>20</sup>Department of Interventional Cardiology and Angiology, Institute of Cardiology, Warsaw, Poland; and <sup>21</sup>Klinik für Kardiologie und Angiologie II, Universitäts-Herzzentrum Freiburg – Bad Krozingen, Bad Krozingen, Germany

Received 30 January 2013; revised 27 March 2013; accepted 8 April 2013

This paper was guest edited by Stefano Taddei, Department of Internal Medicine, Università degli Studi di Pisa, Pisa, Italy.

## Introduction

Hypertension is highly prevalent and one of the most frequent chronic diseases worldwide.<sup>1</sup> It has been suggested that over the next two decades up to 50% of the adult population will be diagnosed with hypertension, according to the standard guideline definitions.<sup>1</sup> Despite the availability of many safe and effective antihypertensive drugs, control rates to target blood pressure remain low.<sup>2</sup> Approximately 5–10% of all patients with high blood pressure are resistant to drug treatment defined as blood pressure >140/90 mmHg, >130–139/80–85 mmHg in diabetes mellitus or >130/80 mmHg in chronic kidney disease in the presence of three or more antihypertensives of different classes, including a diuretic, at maximal or the highest tolerated dose.<sup>3</sup> Resistant hypertension is associated with an increased risk of cardiovascular events.<sup>4</sup> Current non-invasive therapeutic strategies are mainly based on lifestyle interventions and pharmacological treatment, including mineralocorticoid receptor antagonists.<sup>3</sup> Up until recently treatment options for patients with resistant hypertension were limited. Nowadays catheter-based

renal denervation offers a new approach targeting the renal sympathetic nerves. Indeed, the technique has been shown to reduce sympathetic nerve activity,<sup>5</sup> norepinephrine spillover<sup>6</sup> as well as blood pressure<sup>7–9</sup> in patients with resistant hypertension. Several national<sup>10–13</sup> and international<sup>14</sup> consensus documents from different societies have recently been published, with different degrees of involvement of interventionalists. This expert consensus document summarizes the view of an expert panel of the European Society of Cardiology and the European Association of Percutaneous Cardiovascular Interventions to provide guidance regarding appropriate patient selection, efficacy, safety, limitations, and potential new indications of renal denervation for referring physicians, interventionalists, and healthcare providers.

## Pathophysiology

The aetiology of resistant hypertension is multi-factorial. However, there is a large body of evidence indicating the crucial role of the sympathetic nervous system in most types of hypertension and numerous

The opinions expressed in this article are not necessarily those of the Editors of the *European Heart Journal* or of the European Society of Cardiology.

<sup>†</sup>Scientific content endorsed by the European Association of Percutaneous Cardiovascular Interventions (EAPCI), a registered branch of the European Society of Cardiology.

\* Corresponding author. Tel: +49 6841 16 21346, Fax: +49 6841 16 13211, Email: felix.mahfoud@uks.eu

Published on behalf of the European Society of Cardiology. All rights reserved. © The Author 2013. For permissions please email: journals.permissions@oup.com

cardiovascular diseases, including heart failure, chronic kidney disease, and the metabolic syndrome.<sup>15,16</sup> Afferent and efferent sensory, chemo- and baroreceptor nerve fibres, form a neural network within the adventitia of the renal artery (Figure 1).<sup>17</sup> Renal afferent nerves connect the kidney with the hypothalamus, and are activated by renal ischaemia and high local adenosine concentrations.<sup>18</sup> Renal afferent nerve traffic contributes to central sympathetic activity generated in the solitary tract and nucleus. Efferent nerves innervate the renal vasculature, the tubular segment of the nephron, and juxtaglomerular renin-containing granular cells, enhancing sodium and water retention, stimulating renin release, and altering renal blood flow.<sup>16</sup> These effects influence both short- and long-term blood pressure regulation. Their convenient location in the renal artery adventitia means that both the efferent and afferent fibres can now be targeted by catheter-based approaches, thereby re-setting renal blood pressure regulation. Catheter-based radiofrequency ablation has been shown to be as effective as surgical denervation in terms of reducing kidney norepinephrine content in pigs (Figure 2).<sup>19</sup>

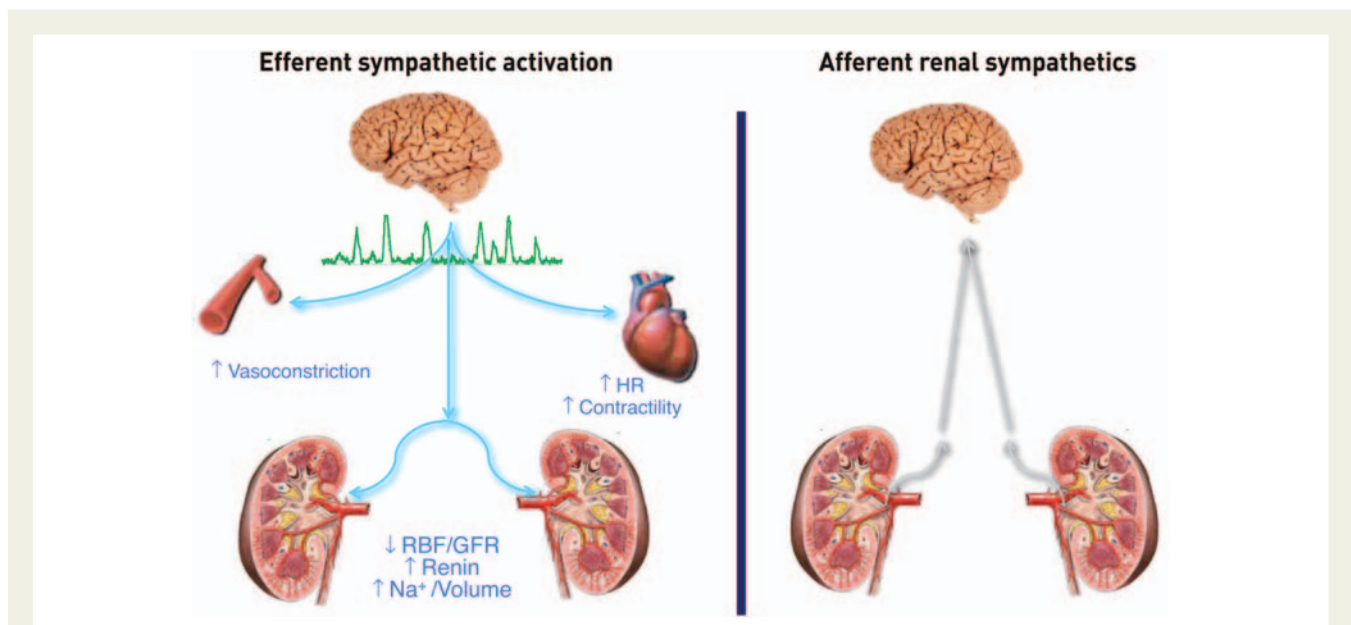
## The procedure

Numerous new percutaneous renal nerve ablation systems are currently being tested and will soon be released into the market. Up to now, five Conformité Européenne-marked renal denervation systems using different treatment strategies are available: Medtronic's Symplicity system, St. Jude's EnligHTN system, Vessix's V2 system, Covidien's One Shot system, and Recor's Paradise system (for details, see Table 1). Most of these systems use radiofrequency energy to target renal sympathetic nerves except for the ultrasound-based Recor's Paradise system. The devices are all inserted percutaneously via a femoral access and advanced

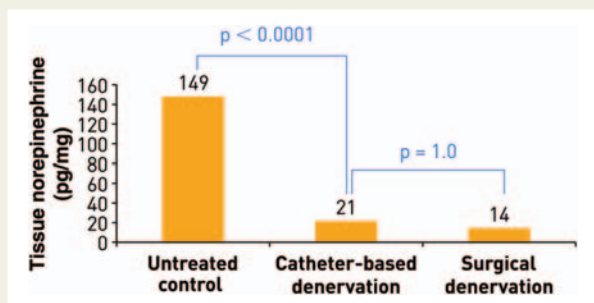
under fluoroscopic control. Beforehand, however, renal artery anatomical suitability for the procedure should be established, i.e. a renal artery length is ideally  $>20$  mm with a diameter of  $>4$  mm. When considering renal nerve ablation, arteries with visible stenosis, with calcification or atheromatous plaques, represent relative contraindications. Anecdotal reports of renal denervation in arteries with significant stenosis ( $>50\%$ ) or previous revascularization have been reported, but this off-label use should be avoided. Recently published data indicated that the applied radiofrequency energy resulted in transient local de-endothelialization, acute cellular swelling, connective tissue coagulation, and thrombus formation.<sup>20</sup> Although controlled data are lacking, these observations suggest that the use of antiplatelet therapy during the procedure (acetylsalicylic acid 250 mg i.v.) and for up to 4 weeks after renal denervation (75–100 mg/day p.o.) might be advisable.

Owing to the co-location of sympathetic nerves and C pain fibres, analgesia and sedation (e.g. using midazolam, morphine, remifentanyl, fentanyl, or propofol) is mandatory during radiofrequency ablation. The presence of an anaesthesiologist is not generally necessary, however, in some countries required. During the procedure vital signs (including blood pressure, heart rate, and oxygen saturation) need to be monitored. In some patients, radiofrequency ablation may cause renal artery oedema and/or spasm at the treatment sites, which can be treated by using intra-arterial nitroglycerine or verapamil. Even when vascular spasm is persistent during the procedure despite these treatments it typically disappears within hours after the ablation. The procedural time normally ranges from 45 to 60 min.

Numerous new catheter systems and treatment modalities for renal denervation are under development. The products include new radiofrequency catheters, but also novel treatment modalities using catheter-based ultrasound energy, cryoablation techniques,



**Figure 1** Efferent and afferent renal sympathetic nerves (modified with permission from Lüscher, PCR-EAPCI Textbook). HR, heart rate; RBF, renal blood flow; GFR, glomerular filtration rate.



**Figure 2** Tissue norepinephrine content in untreated controls and pigs undergoing catheter-based renal denervation and surgical denervation (modified from <sup>19</sup>).

radiation, local drug-delivery, or even external application of ultrasound energy. It is important to note that all the new devices presented above and especially those using new treatment modalities such as ultrasound or chemical denervation will have to show favourable safety and efficacy profiles in a larger cohort of patients with subsequent long-term follow-up before a general use can be recommended.<sup>21</sup>

## Clinical trials

### Efficacy

The initial proof-of-concept study Symplicity HTN-1<sup>6</sup> and the multi-centre, prospective, randomized Symplicity HTN-2 trial<sup>7</sup> investigated the effect of renal denervation in 45 and 106 patients with resistant hypertension, respectively. Baseline blood pressure was 177/100 and 178/96 mmHg, respectively, despite treatment with four or more antihypertensive drugs on average. Renal denervation resulted in significant systolic and diastolic blood pressure reductions that were first observed at 1 month ( $-14/-10$  mmHg,  $P = 0.026$ ) and persisted out to 24 months ( $-32/-14$  mmHg,  $P = 0.001$ ).<sup>8</sup> The presented 36-month long-term follow-up of this non-randomized small study confirmed a sustained blood pressure-lowering effect of 33 and 19 mmHg ( $P < 0.01$ ,  $n = 34$ ).<sup>22</sup> Self-measured home blood pressure assessed in a subgroup of 32 patients decreased by 20/12 mmHg ( $P < 0.0001$ ), compared with 2/0 mmHg in 40 control patients. As expected, the reduction in ambulatory blood pressure monitoring over 24 h after renal denervation was smaller compared with the observed changes in office-based blood pressure (i.e. 11/7 mmHg;  $P = 0.007$ ,  $n = 20$ ). The response to treatment was defined as a reduction in systolic blood pressure (SBP)  $> 10$  mmHg at 6-month follow-up and was found in 84% of patients.

It is important to note that blood pressure rarely changes immediately after the procedure. It often takes several weeks to months before a notable blood pressure reduction occurs, suggesting that a slowly progressive resetting of sympathetic neural regulation occurs. Patients and treating physicians should therefore be informed to avoid unrealistic expectations in the immediate aftermath of the procedure. Furthermore, it is important to communicate to patients and referring physicians that renal denervation as currently deployed

**Table 1** Details of the five CE-marked renal denervation devices

Catheter system	French	Energy	Electrodes/polarity	Design	Patients <sup>a</sup>	Longest follow-up <sup>a</sup>	BP changes at 6 months (mmHg) <sup>a</sup>	BP changes at longest follow-up (index a)	Study
Symplicity	6F	RF	1 unipolar	Single-tip	235	36 months (n = 34)	$-32/-12$ (n = 49)	$-33/-16$ (n = 34)	Symplicity HTN-1, <sup>22</sup> HTN-2, <sup>7,9</sup> (NCT00888433, NCT00664638)
EnligHTN	8F	RF	4 unipolar	Basket	46	6 months (n = 45)	$-26/-10$ (n = 45)	$-26/-10$ (n = 45)	EnligHTN-1 <sup>23</sup> (NCT01438229)
Vessix V2	8F	RF	4–8 bipolar	Over-the-wire balloon	10	1 month (n = 10)	$-30/-10$ (n = 10)	$-30/-10$ (n = 10)	REDUCE-HTN (NCT01541865) <sup>b</sup>
OneShot	7/8F	RF	1 unipolar	helical, irrigated balloon	9	1 month (n = 9)	$-31/-6$ (n = 9)	$-31/-6$ (n = 9)	RHAS <sup>38</sup>
Paradise	7/8F	Ultrasound	1 transducer	fluid-filled balloon	15	12 months (n = 3)	$-32/-17$ (n = 11)	$-25/-13$ (n = 3)	REDUCE <sup>59</sup>

F, French; BP, blood pressure; RF, radiofrequency.

<sup>a</sup>Data are referring to manuscript published or orally presented.

<sup>b</sup>Hoppe UC, oral presentation during EuroPCR 2012, Paris, France.

is designed to improve blood pressure control in patients whose blood pressure is resistant to control with conventional drug therapy. In this regard, renal denervation is unlikely to significantly reduce pill burden in most patients and is not a cure for hypertension. Neither in the Symplicity HTN-1 nor in the HTN-2 a reduction in antihypertensive background medication has been investigated as an endpoint. Of note, both studies have been sponsored by the manufacturers of the renal denervation device (Ardian/Medtronic).

## Safety

In the Symplicity trials, the treatment was performed without major complications in 98% (201 of 209) of the cases included.<sup>6–8</sup> The following complications have been reported: three femoral artery pseudoaneurysms, one urinary tract infection, one case of back pain, one extended hospitalization for assessment of paresthesia, and one renal artery dissection during placement of the guiding catheter. Vasovagal reactions occurred in seven patients (13%) during the intervention, which resolved under treatment with atropine. Six-month renal vascular imaging in 130 patients who underwent renal denervation identified one patient with possible progression of an underlying atherosclerotic lesion, which required no therapy. Two case reports have been published describing a secondary rise in blood pressure after renal denervation caused by a progression of a renal artery stenosis.<sup>24,25</sup> It remains unanswered to which extent the ablation procedure and/or the catheter manipulation induced or promoted the rapid development of renal artery stenosis or whether it represented a natural progression of the disease process.

Concerns have been raised that renal denervation might negatively influence renal function.<sup>26</sup> In the Symplicity HTN-1 trial with an extended follow-up of 24 months in 64 patients, estimated glomerular filtration rate (eGFR) (measured by modification of diet in renal disease) remained stable during the first year of follow-up, whereas eGFR data of the 2-year follow-up is currently available only in 10 patients.<sup>8</sup> In these 10 patients, eGFR was reduced by 16 mL/min/1.73 m<sup>2</sup>, which was thought to be related to changes in diuretic therapy. The effect of renal denervation on renal function and urinary albumin excretion has been investigated in 100 patients with resistant hypertension and preserved renal function.<sup>27</sup> The study demonstrated a reduced number of patients with micro- and macroalbuminuria after renal denervation, without adversely affecting glomerular filtration rate (GFR) or renal artery structure within 6 months. It is important to note that, in the Symplicity trials, patients with an eGFR of <45 mL/min/1.73 m<sup>2</sup> were excluded as a matter of safety. Although preliminary data suggest that renal denervation is also safe and effective in patients with moderate-to-severe chronic kidney disease,<sup>28</sup> these patients should only be treated in clinical studies with subsequent follow-ups.

The effect of renal denervation on the physiological response during cardiopulmonary exercise testing has been tested.<sup>29</sup> Renal denervation resulted in a significant drop in resting, maximum exercise, and recovery blood pressure, whereas heart rate response during exercise and oxygen uptake was well preserved.

Another concern has been the occurrence of orthostatic hypotension after renal nerve ablation as it has occurred in the 1950's with surgical sympathectomy for severe hypertension.<sup>30</sup> Fortunately, such a side-effect does not seem to occur with catheter-based

renal denervation; indeed, a recent study investigated blood pressure changes upon changes in posture without evidence for an alteration in the orthostatic response after the procedure.<sup>31</sup>

## Limitations

One of the major challenges is how to monitor the success of the procedure. There are no easily deployed tests to determine whether the denervation procedure has been wholly or partially effective or ineffective. Furthermore, not all patients respond to treatment with blood pressure lowering. Is this because there is a hypertensive phenotype that is destined not to respond to the procedure or, that the procedure has not been deployed effectively in these patients? Thus, parameters predicting the likelihood of response and the overall success of the renal denervation procedure are lacking. However, as in trials of antihypertensive drugs, SBP at baseline has been identified as one predictor of the magnitude of the BP-lowering response,<sup>27</sup> which might be at least in part explained by the statistical phenomenon of 'regression to the mean'. In Symplicity HTN-2,<sup>7</sup> an intake of centrally acting sympatholytics was identified as a predictor of pronounced blood pressure response, which is surprising because one might have expected drugs targeting the same mechanism as renal denervation to be more effective. At present, no negative blood pressure predictors have been identified and as noted above there are no reliable biochemical or other parameters, suitable for everyday clinical practice, for assessing the success of renal denervation or the degree of renal denervation achieved.

The exact mechanisms by which renal denervation results in a blood pressure reduction are not yet fully established, but are likely to include a reduction in total peripheral resistance, reduced renin release, and favourable alterations of water and salt handling. Of note, measurements of sympathetic nerve traffic in the peroneal nerve revealed that sympathetic activity is also reduced after renal denervation.<sup>5</sup> This is important because it suggests that whole-body sympathetic nerve activity is reduced following the procedure, most likely due to reduced afferent central nervous system input directing a reduction in central sympathetic outflow.<sup>5</sup> However, one published study reported in a small group of 12 patients no significant overall blood pressure-lowering effect and no changes in muscle sympathetic nerve activity after renal denervation (RDN).<sup>32</sup> The interpretation of this study is limited to the fact that, in contrast to the Symplicity trials, the baseline BP was only 157/85 mmHg (thereby ≈20/10 mmHg lower) and some of the subjects had non-treatment-resistant hypertension (42% of the patients had SBP ≤140 mmHg).<sup>33</sup> Thus, lower blood pressure responses had to be expected although sympathetic activation is present even in mild forms of hypertension.<sup>34</sup> Differently, in a larger case-controlled series of patients, all with confirmed multi-drug-resistant hypertension and elevated blood pressure report a mild reduction of multi-unit muscle sympathetic nerve activity (MSNA) and a significant reduction in single-fibre MSNA was reported.<sup>5</sup> The series differ in both entry blood pressure and multi-unit MSNA bursts/100 heart beats, and underlying pharmaceutical use.

Whether the effects of renal denervation will be sustained beyond the time span currently documented (36 months)<sup>22</sup> is uncertain. Indeed, animal studies and transplant experiments have demonstrated that sympathetic renal nerves have the capacity to re-grow

and/or regenerate over time.<sup>35–37</sup> Therefore, the long-term efficacy of the procedure still remains an important question, because only limited information about the long-term follow-up of patients is available, both in clinical trials and in real-life setting. The available 36-month follow-up data of the Symplicity HTN-1 trial<sup>22</sup> are encouraging as they show a sustained blood pressure-lowering effect, suggesting a significant and functionally relevant regrowth of the renal nerves is unlikely. The question whether a repeated intervention with RDN could be performed in patients with inadequate response to a first procedure has been raised. However, with present knowledge, this could not be recommended.

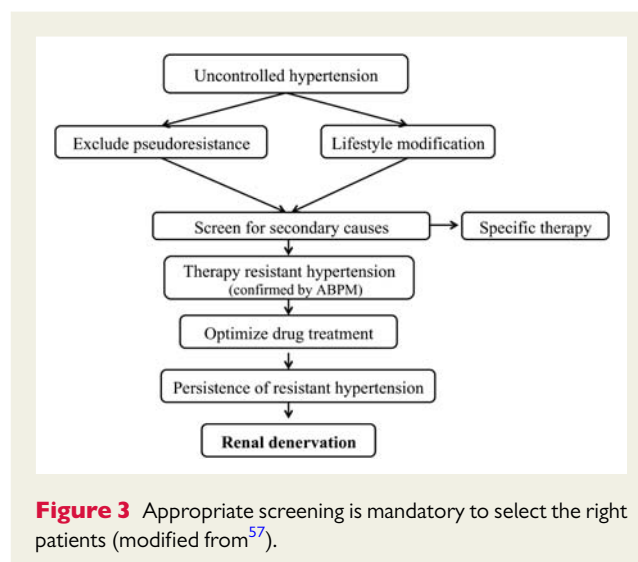
Only limited information about the impact of renal denervation on daytime, night-time, and average blood pressure is available from the Symplicity HTN-2 trial<sup>7</sup> and from that data it has been argued that renal denervation might not reduce ambulatory blood pressure equally as effectively as office blood pressure.<sup>26</sup> A multi-centre analysis of more than 300 patients undergoing renal denervation has subsequently shown that the procedure significantly reduces office and 24 h average, daytime, and night-time blood pressure in patients with resistant hypertension and increases the percentage of patients controlled to target blood pressure values, both according to office blood pressure and ambulatory blood pressure monitoring (Mahfoud F, Homburg/Saar, data on file).

In contrast to some antihypertensive drug regimen, renal denervation has not been shown to affect cardiovascular morbidity and mortality. Although outcome improvement is very likely, when a strong blood pressure reduction is accepted as a valid outcome surrogate in severe and resistant hypertension, this clearly represents an unmet need and has to be investigated in future trials to definitely determine the role of this device-based therapy. The multi-centre, prospective, single-blinded, randomized, placebo-controlled Symplicity HTN-3 study (NCT01418261) is recruiting patients in the USA, which will hopefully answer the question of whether a contributing placebo effect imposes bias on the results of renal denervation.

## Patient selection

According to the available evidence,<sup>6–8</sup> patients are eligible for renal denervation if they have (severe) treatment-resistant hypertension defined by office SBP  $\geq 160$  mmHg ( $\geq 150$  mmHg in type 2 diabetes) despite treatment with at least three antihypertensive drugs of different types in adequate doses, including one diuretic. In certain centres, uncontrolled blood pressure values  $>140/90$  mmHg are taken as reference. High office blood pressures should be confirmed by ambulatory blood pressure monitoring and pseudo-resistance has to be excluded. Pseudo-resistant hypertension should be considered particularly in patients whose clinical blood pressure is consistently higher than out-of-office measurements (mean daytime BP  $< 135$  mmHg).<sup>38</sup> Before a patient with uncontrolled hypertension is considered for renal denervation, patients should have been evaluated by a hypertension expert in specialized centres (e.g. Hypertension Excellence Centers; see <http://www.eshonline.org/Communities/CentresList.aspx>). Optimization of antihypertensive drug treatment and identification of contributing lifestyle factors should be part of the work-up. Special emphasis should be put on the potential additional advantages of the treatment with mineralocorticoid receptor antagonists

(i.e. spironolactone, eplerenone), which may be particularly effective in patients with resistant hypertension.<sup>39</sup> However, concerns have been raised about the long-term safety of these drugs especially in patients with reduced renal function and already existing blockade of the renin–angiotensin system.<sup>14</sup> Therefore, a general recommendation that only patients in whom treatment with mineralocorticoid receptor antagonists has failed, should be considered for renal denervation, cannot be sustained. Secondary hypertension, including renal artery stenosis, pheochromocytoma, sleep apnoea syndrome, and primary hyperaldosteronism, must be systematically ruled out. Figure 3 summarizes the recommended screening process before a patient is considered for renal denervation. Based on the exclusion criteria of the Symplicity trials,<sup>6–8</sup> the following criteria should also be implemented in order to safely proceed to renal denervation: previous renal artery intervention (balloon angioplasty or stenting), evidence of renal artery atherosclerosis (defined as a renal artery stenosis  $>50\%$ ), presence of multiple main renal arteries in either kidneys or main renal arteries of  $<4$  mm in diameter or  $<20$  mm in



**Figure 3** Appropriate screening is mandatory to select the right patients (modified from<sup>57</sup>).

**Table 2** Criteria patients should comply with before renal denervation is considered

- Office-based systolic BP  $\geq 160$  mmHg ( $\geq 150$  mmHg diabetes type 2)
- $\geq 3$  antihypertensive drugs in adequate dosage and combination (incl. diuretic)
- Lifestyle modification
- Exclusion of secondary hypertension
- Exclusion of pseudo-resistance using ABPM (average BP  $> 130$  mmHg or mean daytime BP  $> 135$  mmHg)
- Preserved renal function (GFR  $\geq 45$  ml/min/1.73 m<sup>2</sup>)
- Eligible renal arteries: no polar or accessory arteries, no renal artery stenosis, no prior revascularization

BP, blood pressure; ABPM, ambulatory blood pressure monitoring; GFR, glomerular filtration rate.

length. The kidney function should be preserved (GFR  $\geq 45$  mL/min per 1.73 m<sup>2</sup>), although renal denervation seems to be safe and effective also in patients with moderate-to-severe chronic kidney disease.<sup>28</sup> Table 2 summarizes the criteria for renal denervation according to the currently available clinical evidence. It should also be considered that patients presenting with resistant hypertension often report adverse effects of antihypertensive therapy. So far, no study has been published to investigate the effect of renal denervation in patients intolerant to various drugs, although this can be a relevant problem. Therefore, no general recommendation can be given at this time. However, in patients with reproducible drug intolerance or significant adverse effects an individualized decision-making process appears to be reasonable.

## Centre selection

In patients with uncontrolled hypertension, secondary causes of hypertension are common. Therefore, a detailed screening process is mandatory to identify patients with potentially curable forms of hypertension, since renal denervation is not an effective therapy in these patients. Centres should be specialized in the management of hypertension (e.g. Hypertension Excellence Centers, see <http://www.eshonline.org/Communities/CentresList.aspx>), with at least one hypertension expert being actively involved in the treatment and screening process. In order to avoid high complication rates, it is recommended that the interventions are performed by interventional cardiologists or angiologists who have been trained in performing this specific intervention and who are qualified to manage potential complications, such as acute dissection of renal arteries by stent implantation. Appropriate expertise could be assumed in centres with >25 renal interventions per year. At this stage of the introduction of the procedure, centres should enter their data into

large registries to ensure proper quality control and to allow for an analysis of the procedural success acutely and at long-term follow-up. Table 3 provides suggested follow-up examinations after renal denervation.

## Cost-effectiveness

The cost-effectiveness and long-term clinical benefits of renal denervation in patients with resistant hypertension have recently been published,<sup>40</sup> using a state-transition (Markov) model. The results indicate that renal denervation, although the treatment represents an additional cost at the time of the procedure (hospitalization, catheter, and operator costs), appears to offer a great value over time and might be cost-effective when compared with other medical treatments. The estimated incremental lifetime cost-effectiveness ratio was \$3071 per quality-adjusted life-year and thereby below the commonly accepted threshold of \$5000. Predicted median survival was 18.4 years for renal denervation and 17.1 years for standard of care. However, these assumptions will be sensitive to costs in different healthcare systems and are based on the assumption that blood pressure-lowering drugs or denervation offer no value or harm beyond their impact on blood pressure lowering.

## Potential beneficial effects beyond blood pressure lowering

### Diabetes mellitus and insulin resistance

Activation of the sympathetic nervous system is a main contributor to insulin resistance, metabolic syndrome, associated with central obesity, and risk of developing diabetes.<sup>41,42</sup> A bidirectional relationship between sympathetic overactivity inducing insulin resistance and hyperinsulinemia producing sympathetic activation exists. In a pilot

**Table 3** Suggested follow-up examinations after renal denervation

	Baseline	3 months	6 months	12 months	24 months	36 months	48 months	60 months
Office BP	X	X	X	X	X	X	X	X
ABPM	X	X	X	X	X	X	X	X
Heart rate	X	X	X	X	X	X	X	X
Body weight	X	X	X	X	X	X	X	X
Review medications	X	X	X	X	X	X	X	X
Blood tests, including GFR determination	X	X	X	X	X	X	X	X
ECG	X		X	X	X	X	X	X
Renal artery imaging (duplex ultrasound, MRI/CT with contrast or angiogram)	X		X	X	X	X	X	X
Oral glucose tolerance test (where appropriate)	X		X	X	X	X	X	X
Echocardiography in patients with heart failure or left ventricular hypertrophy	X		X	X	X	X	X	X
UACR in patients with albuminuria	X	X	X	X	X	X	X	X

BP, blood pressure; ABPM, ambulatory blood pressure monitoring; ECG, electrocardiogram; UACR, urine albumin to creatinine ratio.

study<sup>43</sup> renal denervation positively influenced glucose metabolism in patients with resistant hypertension. Three months after the procedure fasting glucose, fasting insulin and 2 h glucose concentration during oral glucose tolerance testing were significantly reduced resulting in a significant improvement of insulin sensitivity (measured using the HOMA index), whereas there were no changes in the control group. Similar findings have been reported from a study,<sup>44</sup> investigating the effect of renal denervation in patients with obstructive sleep apnoea. Beside reductions in the severity of obstructive sleep apnoea, the authors report changes in 2 h glucose concentration during oral glucose tolerance test and reductions in HbA1c. A preliminary report in two patients with polycystic ovary syndrome<sup>45</sup> suggests that renal denervation lowers blood pressure and improves insulin resistance (measured by euglycemic clamp technique) in the absence of changes in body weight over a 3 month period. Further trials are necessary to document the durability of these results as well as their implications for the management of patients with diabetes.

### Cardiac effects

Neurohumoral activation, in particular activation of the sympathetic nervous system, is of prognostic relevance in patients with chronic heart failure and antagonism of the sympathetic system with beta-blockers significantly reduces cardiovascular morbidity and mortality.<sup>46</sup> The kidneys have been identified as a main contributor to the complex pathophysiology, formally called cardio-renal syndrome.<sup>47</sup> One published study<sup>48</sup> investigated the effects of renal denervation on left ventricular mass and diastolic filling pattern in 46 patients with resistant hypertension in which renal denervation was associated with substantial reductions in blood pressure and significantly reduced left ventricular mass and mean interventricular septum thickness. Diastolic function (as assessed by mitral valve lateral E/E') was improved after renal denervation and there was a reduction of left ventricular filling pressures and improvement in ejection fraction. In a small first-in man pilot study, involving seven normotensive patients with chronic heart failure, 6 months after renal denervation, their 6 min walk distance improved significantly and the patients' self-assessment of well-being also improved.<sup>49</sup> There were no significant changes in blood pressure, renal function, and no symptomatic fluctuations in haemodynamics. A randomized, controlled multi-centre trial (RE-ADAPT-CHF) investigating the effects of renal denervation in 100 patients with chronic heart failure (NYHA functional class II–III) is currently underway and will provide important information.

### Chronic kidney disease

Abundant evidence shows that chronic kidney disease is characterized by sympathetic activation, contributing to hypertension and the progressive loss of renal function.<sup>50</sup> Renal denervation could therefore be a potentially novel therapeutic strategy in patients with impaired renal function, including end-stage kidney disease. However, in the Symplicity HTN trials, patients with GFR <45 mL/min/1.73 m<sup>2</sup> were excluded, thus, because the safety of such an intervention in this patient population is uncertain. Recently, the effects of renal denervation in a small series of 15 patients with moderate-to-severe chronic kidney disease (mean GFR 31 mL/min/1.73 m<sup>2</sup>)

were reported.<sup>28</sup> Renal denervation was effective in terms of blood pressure lowering and there was no evidence of a further decline in GFR or effective renal plasma flow 6 months after the procedure, despite exposure to contrast medium. Owing to the limited data, however, patients with higher grades of renal insufficiency should only be treated in the context of clinical research studies.

### Antiarrhythmic effects

The autonomic nervous system also modulates cardiac electrophysiology properties including chronotropy and dromotropy, depolarization rate of the sinus node, and atrioventricular conduction.<sup>51</sup> Renal denervation has been shown to significantly reduce the resting heart rate in patients with resistant hypertension and prolonged PR interval.<sup>52</sup> Interestingly, neither baseline heart rate nor changes in heart rate correlated with the blood pressure reductions. In a first-in-human experience renal denervation was used as bailout therapy in two patients with congestive heart failure suffering from treatment-resistant electrical storm.<sup>53</sup> Following renal denervation, ventricular tachyarrhythmias were significantly reduced in both patients. The impact of renal denervation in patients with refractory atrial fibrillation and resistant hypertension has been assessed in a study.<sup>54</sup> Twenty-seven patients were randomized to pulmonary vein isolation alone or pulmonary vein isolation plus renal denervation. Besides significant reductions in blood pressure, patients in the pulmonary vein isolation plus renal denervation group experienced significantly fewer episodes of atrial fibrillation at follow-up. Furthermore, animal experiments support the antiarrhythmic effects of renal denervation and suggest a reduced inducibility of atrial fibrillation after the procedure.<sup>55</sup> Thus, the role of renal denervation in the field of arrhythmias deserves further exploration in well-defined research protocols. However, due to the limited number of patients investigated so far, a routine use cannot be recommended.

### Hypertensive end-organ damage

It has been shown that pulse wave reflection and augmented pulse wave velocity representing vascular stiffness are adversely related to cardiovascular morbidity and mortality in patients with hypertension. Renal denervation significantly reduced central pulse pressure, associated with peripheral pulse pressure, and resulted in a reduction of pulse wave velocity indicating vascular peripheral re-remodelling effects.<sup>56</sup> This was especially documented in patients with high vascular stiffness at baseline. Albuminuria has been extensively investigated to be a sign of early renal damage in hypertension and can be regarded as hypertensive end-organ damage. It has been shown that renal denervation could reduce the number of patients with macroalbuminuria and microalbuminuria to lower grades of urinary albumin excretion resulting in a higher portion of individuals without micro- or macroalbuminuria during follow-up of 6 months.<sup>27</sup>

### Summary

Current evidence from the available clinical trials strongly support the notion that catheter-based radiofrequency ablation of renal nerves reduces blood pressure and improves blood pressure control in patients with drug-treated resistant hypertension, with data now extending out to 36 months. Accordingly, renal

denervation can be considered as a therapeutic option in patients with resistant hypertension, whose blood pressure cannot be controlled by a combination of lifestyle modification and pharmacological therapy according to current guidelines. The fact that renal denervation also reduces whole-body sympathetic nerve activity suggests that this therapy may also be beneficial in other clinical states characterized by sympathetic nervous system activation—this may ultimately lead to new indications.

## Funding

F.M. is supported by Deutsche Hochdruckliga. F.M. and M.B. are supported by Deutsche Forschungsgemeinschaft and the Deutsche Gesellschaft für Kardiologie. S.W. received research grants from Abbott, Biotronik, Biosensors, Boston Scientific, Cordis, Medtronic, St Jude, Edwards Lifesciences. T.Z. receives study grants from Medtronic-Ardian and Recor.

**Conflict of interest:** F.M. and M.B. received scientific support from Medtronic, St. Jude, Vessix and ReCor and received speaker honorarium from Medtronic, St. Jude and Cordis. T.F.L. received minor fees from Medtronic. I.B. received speaker honoraria from Medtronic. H.S. received scientific support from Medtronic, Vessix, Maya, Covidien and ReCor. M.V. is involved in the Advisory Board of the Global Symplicity Registry of Medtronic. B.W. is an NIH Senior Investigator and has consulted for Medtronic on the development of an International Renal denervation registry. A.W. received speaker honoraria from Medtronic. T.Z. is member of the medical advisory boards of Medtronic-Ardian, Northwind and St. Jude Medical.

## References

- Kearney PM, Whelton M, Reynolds K, Muntner P, Whelton PK, He J. Global burden of hypertension: analysis of worldwide data. *Lancet* 2005;**365**:217–223.
- Calhoun DA, Jones D, Textor S, Goff DC, Murphy TP, Toto RD, White A, Cushman WC, White W, Sica D, Ferdinand K, Giles TD, Falkner B, Carey RM. Resistant hypertension: diagnosis, evaluation, and treatment: a scientific statement from the American Heart Association Professional Education Committee of the Council for High Blood Pressure Research. *Circulation* 2008;**117**:e510–e526.
- Mancia G, De Backer G, Dominiczak A, Cifkova R, Fagard R, Germano G, Grassi G, Heagerty AM, Kjeldsen SE, Laurent S, Narkiewicz K, Ruilope L, Rynkiewicz A, Schmieder RE, Boudier HA, Zanchetti A, Vahanian A, Camm J, De Caterina R, Dean V, Dickstein K, Filippatos G, Funck-Brentano C, Hellemans I, Kristensen SD, McGregor K, Sechtem U, Silber S, Tendera M, Widimsky P, Zamorano JL, Erdine S, Kiowski W, Agabiti-Rosei E, Ambrosioni E, Lindholm LH, Viigimaa M, Adamopoulos S, Bertomeu V, Clement D, Farsang C, Gaita D, Lip G, Mallion JM, Manolis AJ, Nilsson PM, O'Brien E, Ponikowski P, Redon J, Ruschitzka F, Tamargo J, van Zwieten P, Waeber B, Williams B. 2007 Guidelines for the Management of Arterial Hypertension: The Task Force for the Management of Arterial Hypertension of the European Society of Hypertension (ESH) and of the European Society of Cardiology (ESC). *J Hypertens* 2007;**25**:1105–1187.
- Daugherty SL, Powers JD, Magid DJ, Tavel HM, Masoudi FA, Margolis KL, O'Connor PJ, Selby JV, Ho PM. Incidence and prognosis of resistant hypertension in hypertensive patients. *Circulation* 2012;**125**:1635–1642.
- Hering D, Lambert EA, Marusic P, Walton AS, Krum H, Lambert GW, Esler MD, Schlaich MP. Substantial reduction in single sympathetic nerve firing after renal denervation in patients with resistant hypertension. *Hypertension* 2013;**61**:457–464.
- Krum H, Schlaich M, Whitbourn R, Sobotka PA, Sadowski J, Bartus K, Kapelak B, Walton A, Sievert H, Thambar S, Abraham WT, Esler M. Catheter-based renal sympathetic denervation for resistant hypertension: a multicentre safety and proof-of-principle cohort study. *Lancet* 2009;**373**:1275–1281.
- Esler MD, Krum H, Sobotka PA, Schlaich MP, Schmieder RE, Böhm M. Renal sympathetic denervation in patients with treatment-resistant hypertension (The Symplicity HTN-2 Trial): a randomised controlled trial. *Lancet* 2010;**376**:1903–1909.
- Krum H, Barman N, Schlaich M, Sobotka P, Esler M, Mahfoud F, Böhm M, Dunlap M. Catheter-based renal sympathetic denervation for resistant hypertension: durability of blood pressure reduction out to 24 months. *Hypertension* 2011;**57**:911–917.
- Esler MD, Krum H, Schlaich M, Schmieder RE, Böhm M, Sobotka PA. Renal sympathetic denervation for treatment of drug-resistant hypertension: one-year results from the Symplicity HTN-2 randomized, controlled trial. *Circulation* 2012;**126**:2976–2982.
- Mahfoud F, Vonend O, Bruck H, Clasen W, Eckert S, Frye B, Haller H, Hausberg M, Hoppe UC, Hoyer J, Hahn K, Keller T, Krämer BK, Kreutz R, Potthoff SA, Reinecke H, Schmieder R, Schwenger V, Kintscher U, Böhm M, Rump LC. [Expert consensus statement on interventional renal sympathetic denervation for hypertension treatment]. *Dtsch Med Wochenschr* 2011;**136**:2418.
- Pathak A, Girerd X, Azizi M, Benamer H, Halimi JM, Lantelme P, Lefevre T, Sapoval M. Expert consensus: renal denervation for the treatment of arterial hypertension. *Arch Cardiovasc Dis* 2012;**105**:386–393.
- Weber T, Zweiker R, Watschinger B, Gruner P, Koppelstätter C, Brandt MC, Horina J, Brussee H, Hohenstein K, Lambert T, Auer J, Hoppe UC. Clinical application of interventional renal sympathetic denervation: recommendations of the Austrian Society of Hypertension 2012. *Wien Klin Wochenschr* 2012;**124**:789–798.
- Witkowski A, Januszewicz A, Miela J, Narkiewicz K, Opolski G, Rowinski O, Sadowski J, Dudek D, Bryniarski L, Gil RJ, Adamczak M, Grajek S, Kadziela J, Prejbisz A, Nowicki M. [Catheter-based renal sympathetic denervation for the treatment of resistant arterial hypertension in Poland - experts consensus statement]. *Kardiologia* 2011;**69**:1208–1211.
- Schmieder RE, Redon J, Grassi G, Kjeldsen SE, Mancia G, Narkiewicz K, Parati G, Ruilope L, van de Borne P, Tsioufis C. ESH position paper: renal denervation—an interventional therapy of resistant hypertension. *J Hypertens* 2012;**30**:837–841.
- Grassi G. Assessment of sympathetic cardiovascular drive in human hypertension: achievements and perspectives. *Hypertension* 2009;**54**:690–697.
- Sobotka PA, Mahfoud F, Schlaich MP, Hoppe UC, Böhm M, Krum H. Sympatho-renal axis in chronic disease. *Clin Res Cardiol* 2011;**100**:1049–1057.
- DiBona GF. Physiology in perspective: The Wisdom of the Body. Neural control of the kidney. *Am J Physiol Regul Integr Comp Physiol* 2005;**289**:R633–R641.
- Esler M. The 2009 Carl Ludwig Lecture: Pathophysiology of the human sympathetic nervous system in cardiovascular diseases: the transition from mechanisms to medical management. *J Appl Physiol* 2010;**108**:227–237.
- Esler M. Catheter-based renal denervation reduces total body and renal noradrenaline spillover and blood pressure in resistant hypertensive patients. *J Hypertens* 2009;**27**:s167.
- Steigerwald K, Titova A, Malle C, Kennerknecht E, Jilek C, Hausleiter J, Nahrigh JM, Laugwitz KL, Joner M. Morphological assessment of renal arteries after radiofrequency catheter-based sympathetic denervation in a porcine model. *J Hypertens* 2012;**30**:2230–2239.
- Mahfoud F, Kjeldsen SE. Catheter-based renal denervation: a word of caution. *Euro-Intervention* 2013;**8**:1.
- Krum H, Schlaich M, Sobotka PA, Esler MD, Mahfoud F, Böhm M, Dunlap M, Rocha-Singh K, Katholi R. TCT-12 long-term follow-up of catheter-based renal denervation for resistant hypertension confirms durable blood pressure reduction. *J Am Coll Cardiol* 2012;**60**: doi: 10.1016/j.jacc.2012.08.017.
- Papademetriou V, Worthley S, Tsioufis C, Worthley M, Chew D, Sinhal A, Meredith I, Malaipapan Y. Catheter-based renal denervation for the treatment of patients with drug-resistant hypertension: EnLight HTN I: three-month data of a first in man study using a multi-electrode radiofrequency ablation catheter. *Circulation* 2012;**125**:A19523.
- Vonend O, Antoch G, Rump LC, Blondin D. Secondary rise in blood pressure after renal denervation. *Lancet* 2012;**380**:778.
- Kaltenbach B, Id D, Franke JC, Sievert H, Hennersdorf M, Maier J, Bertog SC. Renal artery stenosis after renal sympathetic denervation. *J Am Coll Cardiol* 2012;**60**:2694–2695.
- Petidis K, Anyfanti P, Doumas M. Renal sympathetic denervation: renal function concerns. *Hypertension* 2011;**58**:e19.
- Mahfoud F, Cremers B, Janker J, Link B, Vonend O, Ukena C, Linz D, Schmieder R, Rump LC, Kindermann I, Sobotka PA, Krum H, Scheller B, Schlaich M, Laufs U, Böhm M. Renal hemodynamics and renal function after catheter-based renal sympathetic denervation in patients with resistant hypertension. *Hypertension* 2012;**60**:419–424.
- Hering D, Mahfoud F, Walton AS, Krum H, Lambert GW, Lambert EA, Sobotka PA, Böhm M, Cremers B, Esler MD, Schlaich MP. Renal denervation in moderate to severe CKD. *J Am Soc Nephrol* 2012;**23**:1250–1257.
- Ukena C, Mahfoud F, Kindermann I, Barth C, Lenski M, Kindermann M, Brandt MC, Hoppe UC, Krum H, Esler M, Sobotka PA, Böhm M. Cardiorespiratory response to exercise after renal sympathetic denervation in patients with resistant hypertension. *J Am Coll Cardiol* 2011;**58**:1176–1182.
- Smithwick RH. Surgical treatment of hypertension. *Am J Med* 1948;**4**:744–759.
- Mahfoud F, Lenski M, Ukena C, Barth C, Razouk A, Fischer D, Laufs U, Kindermann I, Böhm M. Influence of renal sympathetic denervation on orthostatic function in patients with resistant hypertension. *Circulation* 2012;**126**:A17201.
- Brinkmann J, Heusser K, Schmidt BM, Menne J, Klein G, Bauersachs J, Haller H, Sweep FC, Diedrich A, Jordan J, Tank J. Catheter-based renal nerve ablation and



- centrally generated sympathetic activity in difficult-to-control hypertensive patients: prospective case series. *Hypertension* 2012; **60**:1485–1490.
33. Mahfoud F, Böhm M, Rump LC, Vonend O, Schmieder RE, Kintscher U. Catheter-based renal nerve ablation and centrally generated sympathetic activity in difficult-to-control hypertensive patients: prospective case series. *Hypertension* 2013; **61**:e17.
  34. Smith PA, Graham LN, Mackintosh AF, Stoker JB, Mary DA. Relationship between central sympathetic activity and stages of human hypertension. *Am J Hypertens* 2004; **17**:217–222.
  35. Mulder J, Hokfelt T, Knuepfer MM, Kopp UC. Renal sensory and sympathetic nerves reinnervate the kidney in a similar time dependent fashion following renal denervation in rats. *Am J Physiol Regul Integr Comp Physiol* 2013. DOI10.1152/ajpregu.00599.2012.
  36. Grisk O, Grone HJ, Rose HJ, Rettig R. Sympathetic reinnervation of rat kidney grafts. *Transplantation* 2001; **72**:1153–1155.
  37. Kline RL, Mercer PF. Functional reinnervation and development of supersensitivity to NE after renal denervation in rats. *Am J Physiol* 1980; **238**:R353–R358.
  38. de la Sierra A, Segura J, Banegas JR, Gorostidi M, de la Cruz JJ, Armario P, Oliveras A, Ruilope LM. Clinical features of 8295 patients with resistant hypertension classified on the basis of ambulatory blood pressure monitoring. *Hypertension* 2011; **57**:898–902.
  39. Vaclavik J, Sedlak R, Plachy M, Navratil K, Plasek J, Jarkovsky J, Vaclavik T, Husar R, Kocianova E, Taborsky M. Addition of spironolactone in patients with resistant arterial hypertension (ASPIRANT): a randomized, double-blind, placebo-controlled trial. *Hypertension* 2011; **57**:1069–1075.
  40. Geisler BP, Egan BM, Cohen JT, Garner AM, Akehurst RL, Esler MD, Pietzsch JB. Cost-effectiveness and clinical effectiveness of catheter-based renal denervation for resistant hypertension. *J Am Coll Cardiol* 2012; **60**:1271–1277.
  41. Grassi G, Dell'Oro R, Quarti-Trevano F, Scopelliti F, Seravalle G, Paleari F, Gamba PL, Mancia G. Neuroadrenergic and reflex abnormalities in patients with metabolic syndrome. *Diabetologia* 2005; **48**:1359–1365.
  42. Huggett RJ, Scott EM, Gilbey SG, Stoker JB, Mackintosh AF, Mary DA. Impact of type 2 diabetes mellitus on sympathetic neural mechanisms in hypertension. *Circulation* 2003; **108**:3097–3101.
  43. Mahfoud F, Schlaich M, Kindermann I, Ukena C, Cremers B, Brandt MC, Hoppe UC, Vonend O, Rump LC, Sobotka PA, Krum H, Esler M, Böhm M. Effect of renal sympathetic denervation on glucose metabolism in patients with resistant hypertension: a pilot study. *Circulation* 2011; **123**:1940–1946.
  44. Witkowski A, Prejbsz A, Florczak E, Kadziela J, Sliwinski P, Bielen P, Michalowska I, Kabat M, Warchol E, Januszewicz M, Narkiewicz K, Somers VK, Sobotka PA, Januszewicz A. Effects of renal sympathetic denervation on blood pressure, sleep apnea course, and glycemic control in patients with resistant hypertension and sleep apnea. *Hypertension* 2011; **58**:559–565.
  45. Schlaich MP, Straznicki N, Grima M, Ika-Sari C, Dawood T, Mahfoud F, Lambert E, Chopra R, Socratous F, Hennebry S, Eikelis N, Böhm M, Krum H, Lambert G, Esler MD, Sobotka PA. Renal denervation: a potential new treatment modality for polycystic ovary syndrome? *J Hypertens* 2011; **29**:991–996.
  46. Parati G, Esler M. The human sympathetic nervous system: its relevance in hypertension and heart failure. *Eur Heart J* 2012; **33**:1058–1066.
  47. Rundqvist B, Elam M, Bergmann-Sverrisdottir Y, Eisenhofer G, Friberg P. Increased cardiac adrenergic drive precedes generalized sympathetic activation in human heart failure. *Circulation* 1997; **95**:169–175.
  48. Brandt MC, Mahfoud F, Reda S, Schirmer SH, Erdmann E, Böhm M, Hoppe UC. Renal sympathetic denervation reduces left ventricular hypertrophy and improves cardiac function in patients with resistant hypertension. *J Am Coll Cardiol* 2012; **59**:901–909.
  49. Davies JE, Manisty CH, Petraco R, Barron AJ, Unsworth B, Mayet J, Hamady M, Hughes AD, Sever PS, Sobotka PA, Francis DP. First-in-man safety evaluation of renal denervation for chronic systolic heart failure: Primary outcome from REACH-Pilot study. *Int J Cardiol* 2013; **162**:189–192.
  50. Schlaich MP, Socratous F, Hennebry S, Eikelis N, Lambert EA, Straznicki N, Esler MD, Lambert GV. Sympathetic activation in chronic renal failure. *J Am Soc Nephrol* 2009; **20**:933–939.
  51. Inoue H, Zipes DP. Changes in atrial and ventricular refractoriness and in atrioventricular nodal conduction produced by combinations of vagal and sympathetic stimulation that result in a constant spontaneous sinus cycle length. *Circ Res* 1987; **60**:942–951.
  52. Ukena C, Mahfoud F, Spies A, Kindermann I, Linz D, Cremers B, Laufs U, Neuberger HR, Böhm M. Effects of renal sympathetic denervation on heart rate and atrioventricular conduction in patients with resistant hypertension. *Int J Cardiol* 2012. in press; DOI10.1016/j.ijcard.2012.07.027.
  53. Ukena C, Bauer A, Mahfoud F, Schrieck J, Neuberger HR, Eick C, Sobotka PA, Gawaz M, Böhm M. Renal sympathetic denervation for treatment of electrical storm: first-in-man experience. *Clin Res Cardiol* 2012; **101**:63–67.
  54. Pokushalov E, Romanov A, Corbucci G, Artyomenko S, Baranova V, Turov A, Shirokova N, Karaskov A, Mittal S, Steinberg JS. A randomized comparison of pulmonary vein isolation with versus without concomitant renal artery denervation in patients with refractory symptomatic atrial fibrillation and resistant hypertension. *J Am Coll Cardiol* 2012; **60**:1163–1170.
  55. Linz D, Mahfoud F, Schotten U, Ukena C, Neuberger HR, Wirth K, Böhm M. Renal sympathetic denervation suppresses postapneic blood pressure rises and atrial fibrillation in a model for sleep apnea. *Hypertension* 2012; **60**:172–178.
  56. Brandt MC, Reda S, Mahfoud F, Lenski M, Böhm M, Hoppe UC. Effects of renal sympathetic denervation on arterial stiffness and central hemodynamics in patients with resistant hypertension. *J Am Coll Cardiol* 2012; **60**:1956–1965.
  57. Mahfoud F, Himmel F, Ukena C, Schunkert H, Böhm M, Weil J. Treatment strategies for resistant arterial hypertension. *Dtsch Arztebl Int* 2011; **108**:725–731.
  58. Ormiston J, Watson T, van Pelt N, Stewart R, Haworth P, Stewart J, Webster M. First report of the 6-month first in human results of the OneShot™ renal denervation system: the RHAS study. *J Am Coll Cardiol* 2012; **60**(Suppl B):TCT–212.
  59. Mabin T, Sapoval M, Cabane V, Stemmett J, Iyer M. First experience with endovascular ultrasound renal denervation for the treatment of resistant hypertension. *EuroIntervention* 2012; **8**:57–61.