



RESEARCH

Open Access

# Properties of Contextual Memory Formed in the Absence of $\alpha$ CaMKII Autophosphorylation

Elaine E Irvine<sup>1,2</sup>, Arthur Danhiez<sup>3</sup>, Kasia Radwanska<sup>4,5</sup>, Charlotte Nassim<sup>1</sup>, Walter Lucchesi<sup>4</sup>, Emile Godaux<sup>3</sup>, Laurence Ris<sup>3</sup>, K Peter Giese<sup>1,4\*</sup>

## Abstract

The alpha-isoform of calcium/calmodulin-dependent kinase II ( $\alpha$ CaMKII) is a major synaptic kinase that undergoes autophosphorylation after NMDA receptor activation, switching the kinase into a calcium-independent activity state. This  $\alpha$ CaMKII autophosphorylation is essential for NMDA receptor-dependent long-term potentiation (LTP), induced by a single tetanus, in hippocampal area CA1 and in neocortex. Furthermore, the  $\alpha$ CaMKII autophosphorylation is essential for contextual long-term memory (LTM) formation after a single training trial but not after a massed training session. Here, we show that in the absence of  $\alpha$ CaMKII autophosphorylation contextual fear conditioning is hippocampus dependent and that multi-tetanus-dependent late-LTP cannot be induced in hippocampal area CA1. Furthermore, we show that in the absence of  $\alpha$ CaMKII autophosphorylation contextual LTM persists for 30 days, the latest time point tested. Additionally, contextual, but not cued, LTM formation in the absence of  $\alpha$ CaMKII autophosphorylation appears to be impaired in 18 month-old mice. Taken together, our findings suggest that  $\alpha$ CaMKII autophosphorylation-independent plasticity in the hippocampus is sufficient for contextual LTM formation and that  $\alpha$ CaMKII autophosphorylation may be important for delaying age-related impairments in hippocampal memory formation. Furthermore, they propose that NMDA receptor-dependent LTP in hippocampal area CA1 is essential for contextual LTM formation after a single trial but not after massed training. Finally, our results challenge the proposal that NMDA receptor-dependent LTP in neocortex is required for remote contextual LTM.

## Background

A major goal in neuroscience is to understand the molecular and cellular mechanisms underlying learning and memory. Synaptic plasticity, in particular NMDA receptor-dependent long-term potentiation (LTP), is thought to be an important cellular mechanism of memory formation that can be induced by behavioral training [1-4]. An essential signaling molecule downstream of NMDA receptor activation is the alpha-isoform of calcium/calmodulin-dependent protein kinase II ( $\alpha$ CaMKII), the major post-synaptic density protein in the hippocampus [5]. After activation  $\alpha$ CaMKII can autophosphorylate at threonine-286 (T286), switching the kinase into a calcium/calmodulin-independent, autonomous activity state. This T286 autophosphorylation is essential for NMDA receptor-dependent LTP at excitatory synapses

in hippocampal area CA1 and neocortex, as indicated by studies with  $\alpha$ CaMKII autophosphorylation-deficient knockin ( $\alpha$ CaMKII<sup>T286A</sup>) mice [6-9].

Hippocampal area CA1 is essential for memory formation after contextual fear conditioning, a task in which a rodent learns to associate a neutral environment (context) with an aversive foot shock [10,11]. The  $\alpha$ CaMKII<sup>T286A</sup> mutant mice have impaired contextual fear long-term memory (LTM) formation after a single training trial or a massed session of 3 trials [12]. However, unexpectedly  $\alpha$ CaMKII<sup>T286A</sup> mutants can form contextual LTM after a massed training session of 5 trials [12]. This finding posed several mechanistic questions, which we have addressed here. We studied whether a) short-term memory (STM) formation depends on  $\alpha$ CaMKII autophosphorylation in the same way as LTM formation, b) spaced training also enables contextual LTM formation without  $\alpha$ CaMKII autophosphorylation, c) contextual LTM formation in the absence of  $\alpha$ CaMKII autophosphorylation requires the hippocampus,

\* Correspondence: karl.giese@kcl.ac.uk

<sup>1</sup>Wolfson Institute for Biomedical Research, University College London, Gower Street, London, WC1E 6BT, UK

Full list of author information is available at the end of the article

d) multiple tetani can induce L-LTP in hippocampal area CA1 in the absence of  $\alpha$ CaMKII autophosphorylation, e) remote contextual LTM requires  $\alpha$ CaMKII autophosphorylation, f) LTM formation in the absence of  $\alpha$ CaMKII autophosphorylation is more sensitive to aging than LTM formation with intact  $\alpha$ CaMKII autophosphorylation.

## Results

### $\alpha$ CaMKII autophosphorylation is necessary for contextual STM formation after 3, but not 5, tone-shock pairings

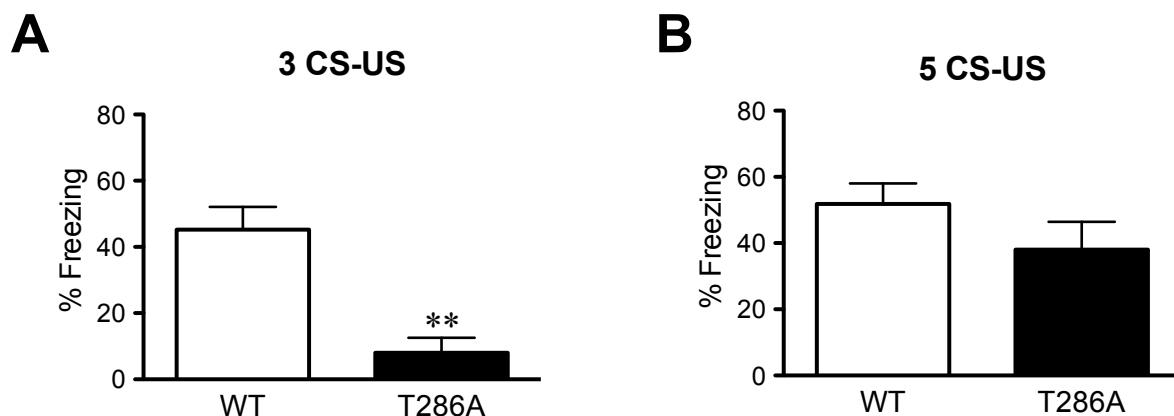
There is evidence to suggest that STM may be an independent process to LTM [13]. Our previous studies have shown that  $\alpha$ CaMKII autophosphorylation is essential for contextual LTM formation after training with either 1 or 3 tone-shock pairings but is not needed after a more intense training protocol of 5 tone-shock pairings [12]. Therefore, we wanted to investigate whether the  $\alpha$ CaMKII<sup>T286A</sup> mice have the same contextual STM phenotype as that observed for contextual LTM.

Mice were trained with either 3 or 5 tone-shock pairings and then tested 2 h later to assess their contextual STM. After training with 3 tone-shock pairings the WT mice formed a contextual STM (Figure 1a). However, the  $\alpha$ CaMKII<sup>T286A</sup> mutants did not show significant freezing to the conditioning context and were significantly impaired compared to their WT littermates ( $H = 8.4$ ,  $P = 0.002$ ; Figure 1a). Another set of naïve mice was then subjected to a more intensive conditioning protocol with 5 tone-shock pairings. After this training protocol not only WT mice, but also the  $\alpha$ CaMKII<sup>T286A</sup> mutants were able to form contextual STM and the freezing levels were not different between the two genotypes ( $F_{(1,18)} = 0.77$ ,  $P = 0.39$ ; Figure 1b). In summary, like

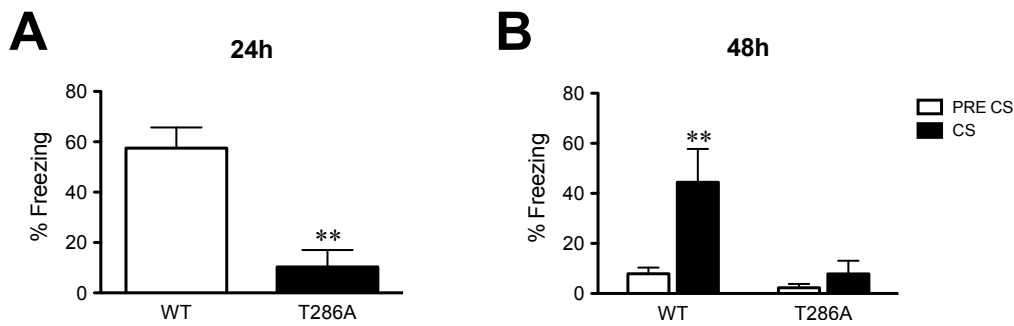
contextual LTM formation, contextual STM formation is impaired by the lack of  $\alpha$ CaMKII autophosphorylation after 3, but not 5, conditioning trials.

### Spaced training does not enable contextual LTM formation in the absence of $\alpha$ CaMKII autophosphorylation

Mice lacking the alpha- and delta-isoform of the transcription factor cAMP-responsive element binding protein (CREB) are impaired in contextual LTM formation after a single training trial or massed training session with 5 trials [14,15]. However, 2 spaced training trials (1 h inter-trial interval) enable contextual LTM formation in these CREB mutants [15]. Accordingly it has been argued that spaced training is more efficient for LTM formation than massed training [16]. We tested this proposal with the  $\alpha$ CaMKII<sup>T286A</sup> mutants using the same training protocol that is sufficient for contextual LTM formation in the CREB <sup>$\alpha$</sup>  mutants [15] (Figure 2). Mice were trained twice with a single CS-US pairing (1 h inter-trial interval) and then tested 24 h and 48 h later for contextual and cued LTM formation respectively. Twenty-four hours after conditioning the  $\alpha$ CaMKII<sup>T286A</sup> mutants had significantly impaired contextual LTM formation as they froze significantly less than their WT littermates ( $F_{(1,12)} = 4.4$ ,  $P = 0.005$ ; Figure 2a). Furthermore, the  $\alpha$ CaMKII<sup>T286A</sup> mutants had impaired cued fear conditioning as they did not freeze when the tone was presented during the test 48 h after training, whereas their WT littermates had a significant increase in freezing when the tone was presented (interaction,  $F_{(1,10)} = 5.7$ ,  $P < 0.05$ ; effect of genotype,  $F_{(1,10)} = 6.8$ ,  $P < 0.05$  and effect of tone,  $F_{(1,10)} = 10.6$ ,  $P < 0.005$ ; Figure 2b). Therefore, spaced training was not sufficient for fear LTM formation in the  $\alpha$ CaMKII<sup>T286A</sup> mutants.



**Figure 1 Impaired contextual STM formation after 3, but not 5, conditioning trials in  $\alpha$ CaMKII autophosphorylation-deficient mice.** Means  $\pm$  s.e.m. are shown. **a:** WT mice ( $n = 6$ ) and  $\alpha$ CaMKII<sup>T286A</sup> mutants ( $n = 6$ ) were trained with 3 tone-shock pairings and tested for contextual STM 2 hours after conditioning. The mutants were significantly impaired. \*\*,  $P < 0.01$ . **b:** WT mice ( $n = 10$ ) and  $\alpha$ CaMKII<sup>T286A</sup> mutants ( $n = 10$ ) were trained with 5 tone-shock pairings and tested for contextual STM 2 hours after conditioning. The freezing response did not differ between the genotypes.



**Figure 2 Contextual LTM formation after 2 one-trial conditioning trials with an inter-trial interval of 1 h is impaired in  $\alpha$ CaMKII autophosphorylation-deficient mice.** Means  $\pm$  s.e.m. are shown. **a:** WT mice ( $n = 6$ ) and  $\alpha$ CaMKII<sup>T286A</sup> mutants ( $n = 6$ ) were trained twice with a single CS-US pairing (inter-trial interval of 1 h), and then tested 24 h and 48 h after conditioning for contextual and cued LTM formation respectively. The  $\alpha$ CaMKII<sup>T286A</sup> mutants had impaired contextual LTM formation as they showed significantly less freezing than their WT littermates. **b:** Forty-eight hours after training cued fear LTM was impaired as the  $\alpha$ CaMKII<sup>T286A</sup> mutants did not freeze to the tone when tested 48h after conditioning. \*\*,  $P < 0.01$ .

### Contextual LTM formation in the absence of $\alpha$ CaMKII autophosphorylation is hippocampus-dependent

In WT mice background contextual fear conditioning is hippocampus-dependent. This has been demonstrated with post-training lesions, whilst pre-training lesions allow for compensation mechanisms to come into play that enable learning [17,18]. Because in the  $\alpha$ CaMKII<sup>T286A</sup> mutants one tetanus-induced NMDA receptor-dependent LTP in hippocampal area CA1 is totally abolished [6,8,9] it was conceivable that the contextual LTM formation in the mutants after 5 training trials [12] is not hippocampus-dependent but rather requires another brain area due to systems compensation. If this were the case, then this would have implications for understanding the role of NMDA receptor-dependent LTP in memory formation. Therefore, to study if contextual fear conditioning in the  $\alpha$ CaMKII<sup>T286A</sup> mutants requires the hippocampus we performed a post-training lesion experiment. Twenty-four hours after 5 tone-shock pairings the dorsal hippocampus was lesioned with ibotenic acid in  $\alpha$ CaMKII<sup>T286A</sup> mutants and their WT littermates (Figure 3a). Seven days after lesioning the mice were tested for contextual LTM. Sham-treated animals were used as controls. We found that hippocampal lesioned mice of both genotypes had impaired contextual LTM formation (effect of lesion,  $F_{(1,38)} = 8.6$ ,  $P = 0.006$ , but no effect of genotype  $F_{(1,38)} = 0.2$ , NS or interaction  $F_{(1,38)} = 0.006$ , NS; Figure 3b) showing that contextual fear conditioning in the absence of  $\alpha$ CaMKII autophosphorylation is hippocampus-dependent.

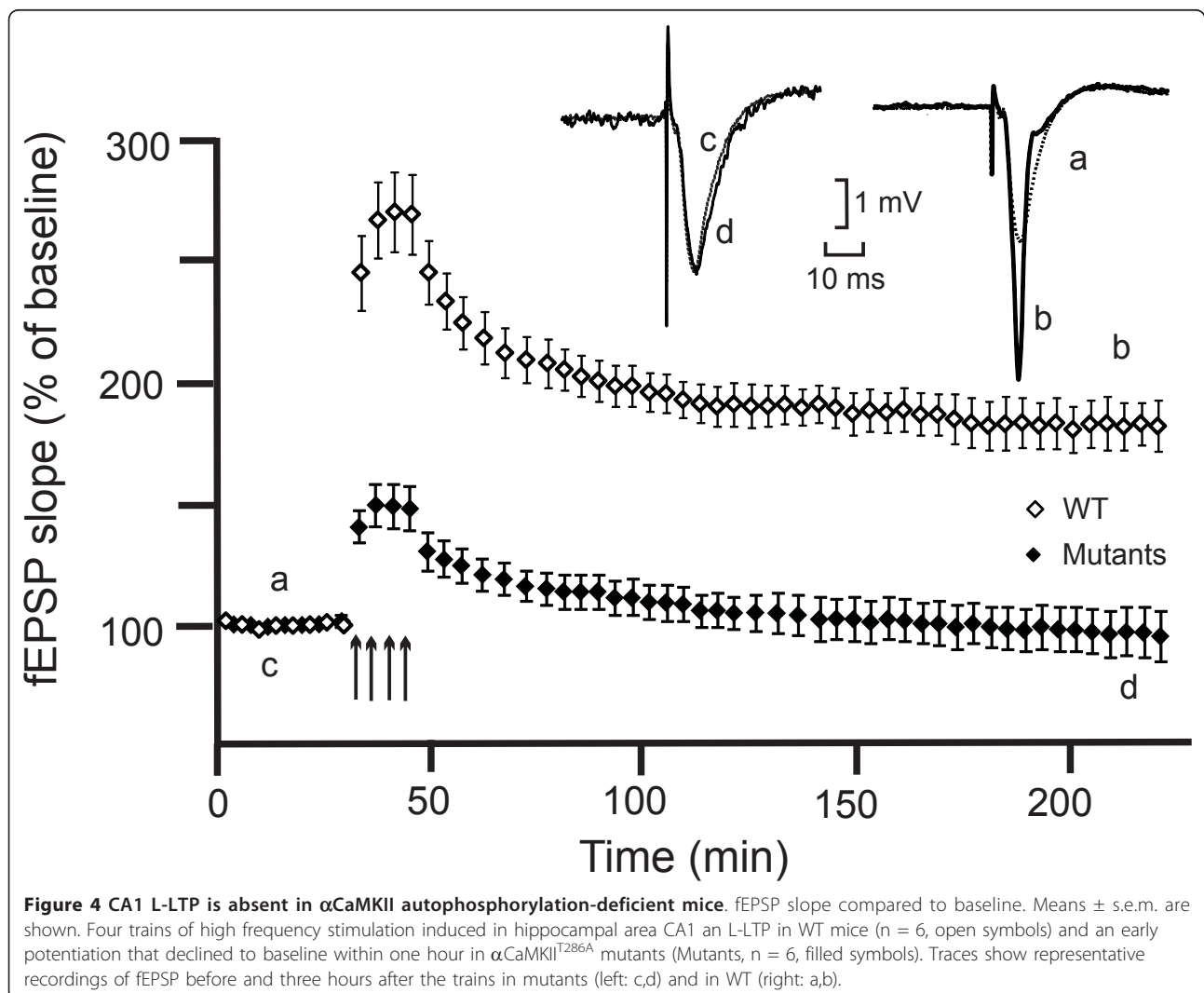
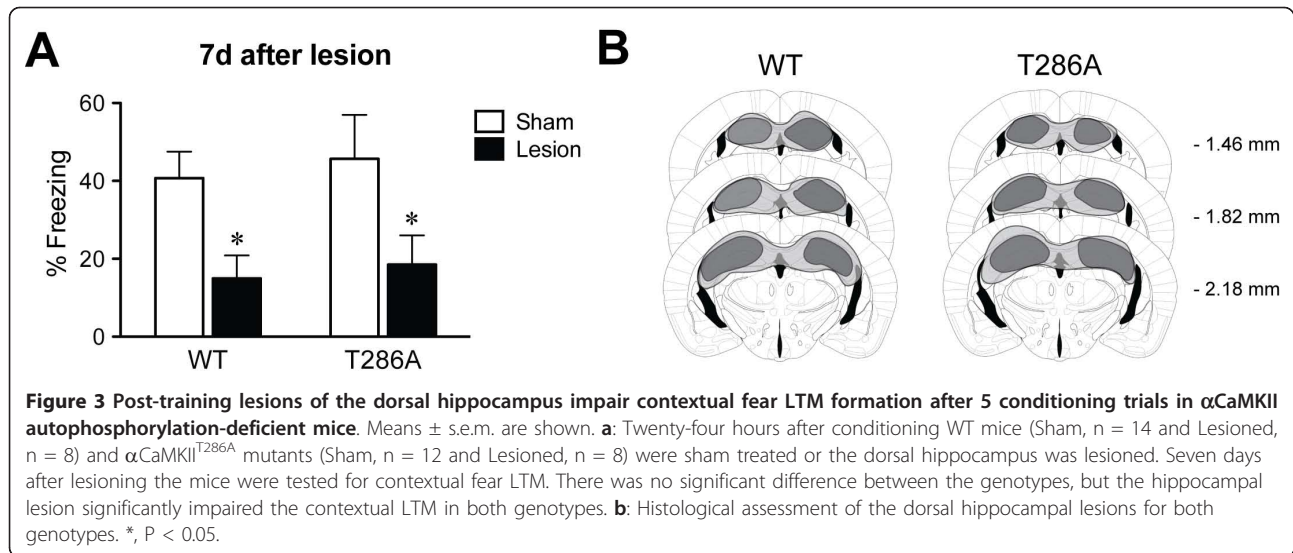
### Multi-tetanus-dependent late-LTP in hippocampal area CA1 cannot be induced in the absence of $\alpha$ CaMKII autophosphorylation

The lesion result together with previous CA1 LTP recordings using a single tetanus [6,8,9] suggested that

NMDA receptor-dependent LTP in hippocampal area CA1, which is impaired in the absence of  $\alpha$ CaMKII autophosphorylation, is not essential for contextual LTM formation. However, it remained possible that in the absence of  $\alpha$ CaMKII autophosphorylation multi-tetanus-dependent late-LTP (L-LTP) in hippocampal area CA1 may be induced paralleling contextual LTM formation that occurs only after several training trials [12]. Therefore, we studied the induction of L-LTP in area CA1 using extracellular field recordings in hippocampal slices (Figure 4). In agreement with previous hippocampal slice recordings we found that basal synaptic transmission did not differ between the genotypes (data not shown), in agreement with previous hippocampal slice recordings [6,8,9]. In WT mice ( $n = 6$ ) L-LTP was obtained as stimulation with 4 tetani induced an increase in the slope of the field excitatory postsynaptic potential (fEPSP) slope to  $246 \pm 16\%$ , that was maintained at  $178 \pm 14\%$  3 hours later. L-LTP was not obtained in  $\alpha$ CaMKII<sup>T286A</sup> mutants ( $n = 6$ ) although there was a transient potentiation. After the tetani the response potentiated at  $140 \pm 6\%$  but returned to baseline within one hour. The difference between the genotypes was statistically significant (two-way ANOVA,  $F_{(1,48)} = 23.97$ ,  $p < 0.0001$ , Student-Newman-Keuls Method,  $p < 0.05$ ) at every point after the tetani (Student  $t$  test  $p < 0.05$ ). Thus, CA1 L-LTP was not induced in the absence of  $\alpha$ CaMKII autophosphorylation after multiple tetani.

### $\alpha$ CaMKII autophosphorylation is not necessary for remote contextual LTM

In normal rodents contextual LTM becomes hippocampus-independent over a period of approximately 30 days [19,20]. Studies with heterozygous  $\alpha$ CaMKII null mutants have suggested that neocortical NMDA



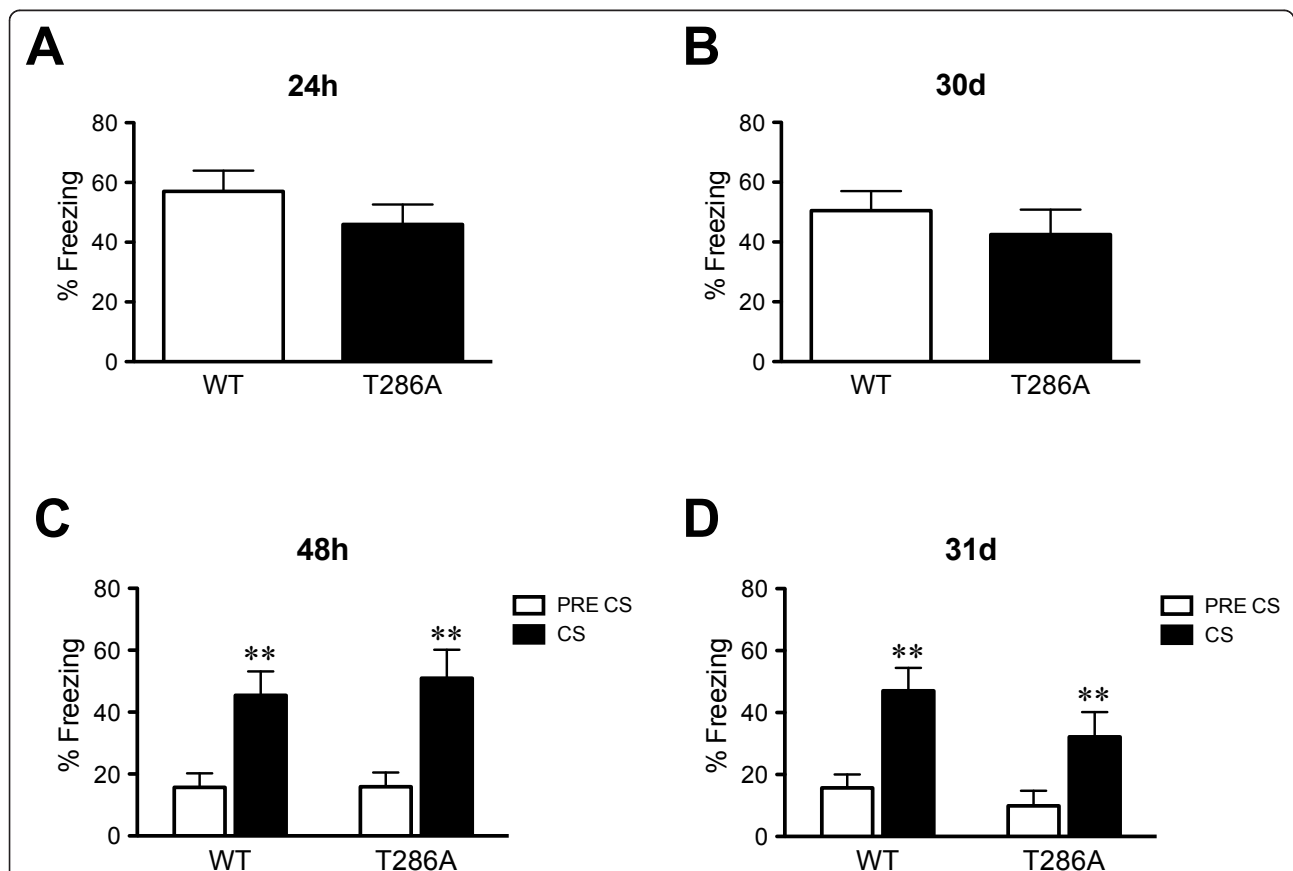
receptor-dependent LTP is essential for the reorganization of contextual LTM [21]. We were able to test this hypothesis with the  $\alpha$ CaMKII<sup>T286A</sup> mutants as these animals form contextual LTM 24 hours after 5 conditioning trials [12] and because they have fully blocked NMDA receptor-dependent LTP in neocortex [7].

Firstly, we confirmed our earlier finding that the  $\alpha$ CaMKII<sup>T286A</sup> mutants are able to form both contextual and cued fear LTM as they had similar freezing levels to their WT littermates when tested 24 and 48 hours, respectively, after 5 tone-shock pairings (Context,  $F_{(1,26)} = 1.32$ ,  $P = 0.26$ ; Tone, effect of tone,  $F_{(1,26)} = 60.7$ ,  $p < 0.001$ , but no effect of genotype  $F_{(1,26)} = 0.1$  or interaction  $F_{(1,26)} = 0.4$ ; Figure 5a and 5c). These mice were then tested again 30 and 31 days after training for remote contextual and cued fear LTM (Figure 5b and 5d). We found that  $\alpha$ CaMKII<sup>T286A</sup> mutants and WT littermates had an equal amount of contextual freezing when tested 30 days after training ( $H = 0.2$ ,  $P = 0.65$ ; Figure 5b). Furthermore, as

previously shown the  $\alpha$ CaMKII<sup>T286A</sup> mutants had normal remote cued fear LTM as both genotypes froze significantly more during tone presentation (effect of tone,  $F_{(1,26)} = 32.1$ ,  $p < 0.001$ , but no effect of genotype  $F_{(1,26)} = 1.8$  or interaction  $F_{(1,26)} = 0.9$ ; Figure 5d). Taken together, these results show that  $\alpha$ CaMKII autophosphorylation is not required for remote contextual LTM after overtraining and questions whether neocortical NMDA receptor-dependent LTP is in fact essential for the reorganization of contextual LTM as previously suggested [21].

#### Contextual LTM formation in the absence of $\alpha$ CaMKII autophosphorylation is impaired at 18 months of age

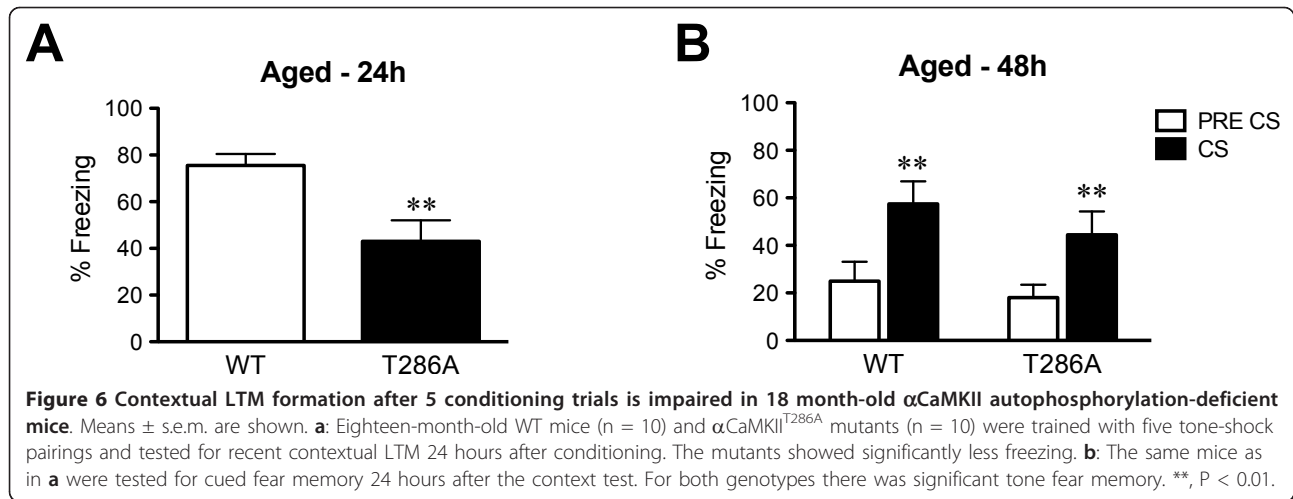
Changes in molecular signaling in the hippocampus can impact on age-dependence of contextual LTM formation [e.g., [22]]. Therefore, we studied whether contextual LTM formation after 5 tone-shock pairings was altered in aged  $\alpha$ CaMKII<sup>T286A</sup> mutants (18 months old) (Figure 6a).



**Figure 5 Normal remote contextual and cued fear LTM after five conditioning trials in  $\alpha$ CaMKII autophosphorylation-deficient mice.**

Means  $\pm$  s.e.m. are shown. **a**: WT mice ( $n = 14$ ) and  $\alpha$ CaMKII<sup>T286A</sup> mutants ( $n = 14$ ) were trained with five tone-shock pairings and tested for recent contextual LTM 24 hours after conditioning. Freezing did not differ between the genotypes. **b**: Thirty days after training the  $\alpha$ CaMKII<sup>T286A</sup> mutants had normal remote contextual LTM as freezing did not differ between the genotypes, suggesting that the contextual LTM was stable. **c**: Forty-eight hours after training cued fear LTM was normal as both genotypes showed a similar significant increase in freezing when the tone was presented. **d**: The cued fear LTM was stable as 31 days after training mice of both genotypes still showed a similar significant increase in freezing when the tone was presented. \*\*,  $P < 0.01$ .





Twenty-four hours after conditioning the aged  $\alpha$ CaMKII<sup>T286A</sup> mutants had significantly reduced contextual freezing indicating impaired contextual LTM formation ( $F_{(1,18)} = 9.95$ ,  $P = 0.005$ ). This impairment in contextual LTM formation is unlikely to have resulted from deficits in amygdala function in the aged  $\alpha$ CaMKII<sup>T286A</sup> mutants as they had normal cued fear LTM 48 hours after training (effect of tone,  $F_{(1,18)} = 35.1$ ,  $p < 0.001$ , but no effect of genotype  $F_{(1,18)} = 0.9$  or interaction  $F_{(1,18)} = 0.4$ , Figure 6b). It should be noted that the contextual freezing levels of the aged WT mice was higher than for young adult WT mice (Figure 5a). Since contextual fear conditioning was done in distinct cohorts for the different ages, our findings only suggest an age-dependent impairment in contextual fear conditioning of the  $\alpha$ CaMKII<sup>T286A</sup> mutants. Nonetheless, our results propose that  $\alpha$ CaMKII autophosphorylation is important for delaying age-related memory impairments.

## Discussion

Here, we have used the  $\alpha$ CaMKII<sup>T286A</sup> mutant mice to investigate several mechanistic questions of contextual LTM formation. Firstly, we have shown that like contextual LTM formation, contextual STM formation is impaired in the absence of  $\alpha$ CaMKII autophosphorylation after 3, but not 5, conditioning trials. In principle, this result is consistent with the idea that STM may be a prerequisite for LTM formation. However, in earlier studies we found that  $\alpha$ CaMKII autophosphorylation is required for the induction of immediate-early gene (IEG) expression by contextual fear conditioning [[23]; Radwanska et al., unpublished data]. IEG expression, which is essential for LTM formation [e.g., [24]], is induced 'immediately' after training. Therefore, it seems more likely that STM and LTM formation occur in parallel as independent processes as suggested by Izquierdo and colleagues [13]. In this case  $\alpha$ CaMKII autophosphorylation

is needed for both types of memory formation by triggering distinct molecular processes. However, we did not observe a genetic dissociation between STM and LTM formation indicating that  $\alpha$ CaMKII autophosphorylation is required for both.

We found that massed, but not spaced, training enables contextual LTM formation in  $\alpha$ CaMKII<sup>T286A</sup> mutants. This is the opposite to contextual LTM formation in CREB <sup>$\alpha\Delta$ /-</sup> mutants that is enabled by spaced, but not massed, training [15]. It is not known why spaced training enables LTM formation in the CREB hypomorphic mutants. In this case, a process needs to be 'remembered' at the second training trial one hour after the first trial. Consequently, the activation of such a process seems to require the  $\alpha$ CaMKII autophosphorylation. However, the nature of the process remains unclear. The comparison of the contextual LTM phenotypes in the CREB mutants and the  $\alpha$ CaMKII<sup>T286A</sup> mutants shows that spaced training is not always more beneficial than massed training for LTM formation. It suggests that massed training may be more beneficial for LTM formation when synaptic signaling is impaired, whereas spaced training may be more beneficial for LTM formation when transcription in the nucleus is affected.

We have shown that contextual fear conditioning in the  $\alpha$ CaMKII<sup>T286A</sup> mutants is hippocampus dependent and that multi-tetanus-dependent L-LTP cannot be induced in hippocampal area CA1 in these mice. Together, with previous hippocampal slice recordings [6,8,9] this strongly suggests that in the absence of  $\alpha$ CaMKII autophosphorylation there is no hippocampal CA1 NMDA receptor-dependent LTP and therefore that contextual LTM does not necessarily require this type of plasticity. This is an unexpected proposal because an earlier study showed that CA1-restricted knockout of the essential NMDA receptor subunit NR1 impairs

contextual LTM formation [10]. However, Rampon et al. investigated contextual LTM formation after a single training trial [10]. Consistently, the absence of  $\alpha$ CaMKII autophosphorylation blocks contextual LTM formation after a single training trial [12]. Thus, we suggest that CA1 NMDA receptor-dependent LTP has a specific role in contextual fear conditioning after one trial, but it is not required for LTM formation after 5 massed trials.

We also found that  $\alpha$ CaMKII autophosphorylation is not required for remote contextual LTM after massed training. As NMDA receptor-dependent LTP in the neocortex is blocked in the  $\alpha$ CaMKII<sup>T286A</sup> mutants, the finding of normal remote contextual LTM in these animals suggests that NMDA receptor-dependent LTP in neocortex is not required for the reorganization of contextual LTM. This suggestion is in contrast with an earlier suggestion from a study with heterozygous  $\alpha$ CaMKII null mutants that have impaired NMDA receptor-dependent LTP in neocortex [21]. However, these heterozygous null mutants also have altered neurogenesis in the adult dentate gyrus [25], which has recently been implicated in regulating the reorganization of contextual LTM [26]. Consistently, the  $\alpha$ CaMKII<sup>T286A</sup> mutants have normal neurogenesis in adult dentate gyrus [27] and normal remote contextual LTM. It should be noted that our findings do not claim that  $\alpha$ CaMKII is dispensable for remote contextual LTM. This is because  $\alpha$ CaMKII has various functions and only a subset of these functions is impaired in the  $\alpha$ CaMKII<sup>T286A</sup> mutants. For example,  $\alpha$ CaMKII has a structural function that is independent from the T286 autophosphorylation [28]. Thus, it is not surprising that heterozygous  $\alpha$ CaMKII null mutants, but not  $\alpha$ CaMKII<sup>T286A</sup> mutants, have impaired remote contextual LTM.

Finally, we provide some evidence that 18 month-old  $\alpha$ CaMKII<sup>T286A</sup> mutants are impaired in contextual, but not cued, LTM formation. However, more systematic aging studies are required to further establish whether aged  $\alpha$ CaMKII<sup>T286A</sup> mutants have impaired contextual LTM formation. Nonetheless, our preliminary findings suggest that  $\alpha$ CaMKII autophosphorylation-dependent plasticity in the hippocampus is important to delay age-dependent memory impairments. This idea may be of relevance for understanding Alzheimer's disease that has been suggested to be associated with impaired  $\alpha$ CaMKII autophosphorylation [29-31].

## Conclusions

One of the main conclusions from our studies is that contextual fear conditioning in the absence of  $\alpha$ CaMKII autophosphorylation is hippocampus-dependent. Thus, hippocampal plasticities that do not require  $\alpha$ CaMKII autophosphorylation appear to be sufficient for

contextual LTM formation. Further, NMDA receptor-dependent LTP in hippocampal area CA1 that requires  $\alpha$ CaMKII autophosphorylation seems to have a specific role in contextual LTM formation: it is needed for one-trial LTM formation but not for LTM formation after a session of massed training trials. Additionally, our findings suggest that NMDA receptor dependent LTP in neocortex is not required for reorganization of contextual LTM as previously proposed [21], as remote contextual LTM is intact in the absence of  $\alpha$ CaMKII autophosphorylation and indeed autophosphorylation is essential for this type of LTP [7]. Finally, we suggest that  $\alpha$ CaMKII autophosphorylation may be important for delaying age-related hippocampus-dependent memory decline.

## Methods

### Animals

The subjects were housed in groups of two to five and maintained on a 12 h light/dark cycle with food and water *ad libitum*. Male and female homozygous  $\alpha$ CaMKII<sup>T286A</sup> mutants and control wild-type (WT) littermates were obtained in the 129B6F4-6 background by intercrossing heterozygous mutants. Genotyping was carried out by PCR analysis, as described previously [6] with DNA obtained from tail biopsies on postnatal day 21, the day of weaning. All the young, adult mice were 10-16 weeks of age, and all aged mice were 18 months old, at the time of training. All experiments used approximately equal numbers of male and female mice, and were undertaken in accordance with the UK Animals (Scientific Procedures) Act 1986.

### Fear Conditioning

For all of the experiments background contextual fear conditioning was used. Background contextual fear conditioning involves the hippocampus more strongly than conditioning without a tone presentation [32]. Background conditioning took place in a conditioning chamber (Med Associates Inc, St Albans, USA) that was situated in a soundproof box. The conditioning chamber floor was made up of 36 stainless steel rods that were used for shock delivery. A speaker was mounted on one side of the chamber for delivery of the tone (80 dB, 3.0 kHz). In order to camouflage any noise in the behavioural room background noise was supplied to the chamber by a white noise generator positioned in the side of the soundproof box. Prior to training and contextual fear memory test the chamber was cleaned with 70% ethanol and a paper towel soaked in the ethanol was placed under the grid floor. The cued fear memory test was conducted in a novel chamber that was structurally different from the conditioning chamber. This chamber was semi-circular, had a plastic floor and prior to test, the chamber was cleaned with a lemon-scented solution.

On the conditioning day, the mice were brought from the housing room into a holding room where they were allowed to acclimatise for 30 min before training. During training, the mice were placed individually in the chamber and after a 120 s introductory period a tone (80 dB, 3.0 kHz) was presented for 30 s, the last 2 s of which coincided with a foot shock (0.7 mA). Depending on the intensity of the training protocol the mice received a further 2 or 4 tone-shock pairings at 60 s intervals, and for spaced training they received two training trials with a single tone-shock pairing and an inter-trial interval of 1 h. After training mice were returned to their home cage.

In order to test for short-term contextual memory mice were re-exposed to the conditioning chamber for a period of 5 min 2 h after training. Long-term contextual fear memory was assessed by re-exposing the mice to the conditioning chamber for 5 min 24 h after training. Long-term cued fear memory was assessed by placing each mouse in a novel chamber 48 h after training. Following 180 s without a tone (Pre-CS) the tone was presented for 180 s (CS) to assess cued fear memory. In order to test for the stability of the contextual and cued fear memories the mice were re-tested 30 and 31 days respectively after training.

The behaviour of the mice was recorded and freezing behaviour (defined as complete lack of movement, except for respiration) was scored for 2 s in every 5 s.

### Hippocampal lesions

In order to test if the contextual fear memory after 5 tone-shock pairings was hippocampus-dependent dorsal hippocampal lesions were given to the homozygous  $\alpha$ CaMKII<sup>T286A</sup> mutants and their WT littermates 24 h after training. The mice were anaesthetized with a mixture of isoflourane (Abbott, Kent, UK) and O<sub>2</sub> and then mounted in a Kopf stereotaxic frame. The scalp was shaved and surgically cleaned and then a midline incision was made that exposed the skull. The skull overlying the target area was removed and bilateral injections of ibotenic acid (Sigma) dissolved in phosphate buffer saline (PBS) at a concentration of 10 mg/ml (see Table 1 for coordinates and volumes; according to [33]) were made using a 5  $\mu$ l Hamilton syringe with a 33 gauge needle. After completion of the injections, the scalp was sutured, and the mouse was returned to its home cage. Sham-lesioned mice were subjected to the same surgical procedure, but PBS was injected into only one of the dorsal hippocampal coordinates. The mice were tested for contextual fear memory 7 days after surgery.

### Histology

After completion of behavioural testing all lesioned and sham-lesioned mice were given a lethal injection of

**Table 1 Stereotaxic coordinates for lesioning the dorsal hippocampus**

AP (mm)	ML (mm)	DV (mm)	Vol ( $\mu$ l)
- 1.5	1.00	- 1.80	0.07
- 1.8	1.00	- 1.80	0.07
- 1.8	1.75	- 2.00	0.07
- 2.1	1.20	- 1.75	0.07
- 2.1	2.00	- 2.00	0.07
- 2.4	1.30	- 1.75	0.07
- 2.4	2.70	- 2.00	0.07

sodium pentobarbitone (Euthatal; Animal Care Ltd, York, UK) and were perfused with physiological saline and 4% paraformaldehyde in PBS. The brains were removed and stored in 4% paraformaldehyde until they were coronally sectioned at 40  $\mu$ m and stained with cresyl violet.

### Slice electrophysiology

Hippocampal slices were perfused with artificial cerebrospinal fluid (ACSF) with the following composition: 124 mM NaCl, 5 mM KCl, 26 mM NaHCO<sub>3</sub>, 1.24 mM NaH<sub>2</sub>PO<sub>4</sub>, 2.5 mM CaCl<sub>2</sub>, 1.3 mM MgSO<sub>4</sub>, 10 mM D-glucose, bubbled with a mixture of 95% O<sub>2</sub> and 5% CO<sub>2</sub>. Mice were anaesthetized and decapitated. The hippocampus was dissected and cut in 450  $\mu$ m-thick slices with a tissue chopper. The slices were transferred into the recording chamber and kept in interface at 28°C for 1.5 h. The perfusion rate of ACSF was 1 ml/min. Bipolar twisted nickel-chrome electrodes (50  $\mu$ m each) were used to stimulate Schaffer's collaterals.

Extracellular field excitatory postsynaptic potentials (fEPSP) were recorded in the stratum radiatum of the CA1 region with low resistance (2-5 megaOhm) glass microelectrodes filled with ACSF. Test stimuli were biphasic (0.08 ms for each pulse) constant-voltage pulses delivered every minute with an intensity adjusted to evoke an approximate 40% maximal response. The slope of the fEPSP was measured on the average of four consecutive responses. For each slice, an input-output curve was established from the responses obtained for various stimuli. LTP was induced by applying four trains (50 Hz, 1s, 5 min interval). In both protocols, the potentiated response was recorded for 4 h.

For each slice, the fEPSP slopes were normalized with respect to the mean slope of the fEPSPs recorded during the 30-minute period, preceding induction of LTP. To determine whether or not the normalized fEPSP of a group of slices submitted to the same experimental conditions was significantly potentiated ( $p < 0.05$ ), the percentages of baseline measured after induction of LTP were compared by a two-way ANOVA and several student t tests at different times after LTP induction.



## Statistical analysis

Normally distributed data were analyzed by analysis of variance (ANOVA) followed by Student-Newman-Keuls post-hoc analysis. Not normally distributed data were analyzed by ANOVA on ranks.

## List of abbreviations

$\alpha$ CaMKII: alpha-isoform of the calcium/calmodulin-dependent kinase II; LTM: long-term memory; LTP: long-term potentiation; STM: short-term memory;

## Acknowledgements

We thank Dr Jeff Vernon for helpful advice during the course of these studies. This work was generously supported by the Alzheimer's Research Trust, UK, British Medical Research Council and the Belgian Queen Elisabeth Medical Foundation. L.R. is senior scientist of the Belgian Fund for Scientific Research (F.R.S.-FNRS).

## Author details

<sup>1</sup>Wolfson Institute for Biomedical Research, University College London, Gower Street, London, WC1E 6BT, UK. <sup>2</sup>Metabolic Signalling Group, MRC Clinical Sciences Centre, Imperial College London, Du Cane Road, London, W12 0NN, UK. <sup>3</sup>Department of Neurosciences, University of Mons, 20 Place du Parc, B-7000 Mons, Belgium. <sup>4</sup>Centre for the Cellular Basis of Behaviour, Institute of Psychiatry, King's College London, 125 Coldharbour Lane, London, SE5 9NU, UK. <sup>5</sup>Laboratory of Molecular Neurobiology, Nencki Institute, Warsaw, Poland.

## Authors' contributions

EEI, CN and WL bred and genotyped the  $\alpha$ CaMKII<sup>T286A</sup> mutants. EEI performed the behavioral studies with the mice. AD and LR performed the electrophysiological recordings. EEI, KR, EG, LR and KPG designed the experiments and they wrote the paper. All authors have read and approved the final version of this manuscript.

## Competing interests

The authors declare that they have no competing interests.

Received: 18 October 2010 Accepted: 28 January 2011

Published: 28 January 2011

## References

- Bliss TV, Collingridge GL: **A synaptic model of memory: long-term potentiation in the hippocampus.** *Nature* 1993, **361**:31-39.
- Martin SJ, Grimwood PD, Morris RG: **Synaptic plasticity and memory: an evaluation of the hypothesis.** *Annu Rev Neurosci* 2000, **23**:649-711.
- Gruart A, Muñoz MD, Delgado-García JM: **Involvement of the CA3-CA1 synapse in the acquisition of associative learning in behaving mice.** *J Neurosci* 2006, **26**:1077-1087.
- Whitlock JR, Heynen AJ, Shuler MG, Bear MF: **Learning induces long-term potentiation in the hippocampus.** *Science* 2006, **313**:1093-1097.
- Lisman J, Schulman H, Cline H: **The molecular basis of CaMKII function in synaptic and behavioural memory.** *Nat Rev Neurosci* 2002, **3**:175-190.
- Giese KP, Fedorov NB, Filipkowski RK, Silva AJ: **Autophosphorylation at Thr286 of the alpha calcium-calmodulin kinase II in LTP and learning.** *Science* 1998, **279**:870-873.
- Hardingham N, Glazewski S, Pakhotin P, Mizuno K, Chapman PF, Giese KP, Fox K: **Neocortical long-term potentiation and experience-dependent synaptic plasticity require alpha-calcium/calmodulin-dependent protein kinase II autophosphorylation.** *J Neurosci* 2003, **23**:4428-4436.
- Yasuda H, Barth AL, Stellwagen D, Malenka RC: **A developmental switch in the signaling cascades for LTP induction.** *Nat Neurosci* 2003, **6**:15-16.
- Cooke SF, Wu J, Plattner F, Errington M, Rowan M, Peters M, Hirano A, Bradshaw KD, Anwyl R, Bliss TV, Giese KP: **Autophosphorylation of alphaCaMKII is not a general requirement for NMDA receptor-dependent LTP in the adult mouse.** *J Physiol* 2006, **574**:805-818.
- Rampon C, Tang YP, Goodhouse J, Shimizu E, Kiyin M, Tsien JZ: **Enrichment induces structural changes and recovery from nonspatial memory deficits in CA1 NMDAR1-knockout mice.** *Nat Neurosci* 2000, **3**:238-244.
- Hunsaker MR, Kesner RP: **Dissociations across the dorsal-ventral axis of CA3 and CA1 for encoding and retrieval of contextual and auditory-cued fear.** *Learn Mem* 2008, **8**:61-69.
- Irvine EE, Vernon J, Giese KP: **AlphaCaMKII autophosphorylation contributes to rapid learning but is not necessary for memory.** *Nat Neurosci* 2005, **8**:411-412.
- Izquierdo I, Barros DM, Mello e Souza T, de Souza MM, Izquierdo LA, Medina JH: **Mechanisms for memory types differ.** *Nature* 1998, **393**:635-636.
- Bourtchuladze R, Frenguelli B, Blendy J, Cioffi D, Schutz G, Silva AJ: **Deficient long-term memory in mice with a targeted mutation of the cAMP-responsive element-binding protein.** *Cell* 1994, **79**:59-68.
- Kogan JH, Frankland PW, Blendy JA, Coblenz J, Marowitz Z, Schütz G, Silva AJ: **Spaced training induces normal long-term memory in CREB mutant mice.** *Curr Biol* 1997, **7**:1-11.
- Silva AJ, Kogan JH, Frankland PW, Kida S: **CREB and memory.** *Annu Rev Neurosci* 1998, **21**:127-148.
- Anagnostaras SG, Gale GD, Fanselow MS: **Hippocampus and contextual fear conditioning: recent controversies and advances.** *Hippocampus* 2001, **11**:8-17.
- Maren S: **Pavlovian fear conditioning as a behavioral assay for hippocampus and amygdala function: cautions and caveats.** *Eur J Neurosci* 2008, **28**:1661-1666.
- Kim JJ, Fanselow MS: **Modality-specific retrograde amnesia of fear.** *Science* 1992, **256**:675-677.
- Frankland PW, Bontempi B: **The organization of recent and remote memories.** *Nat Rev Neurosci* 2005, **6**:119-130.
- Frankland PW, O'Brien C, Ohno M, Kirkwood A, Silva AJ: **Alpha-CaMKII-dependent plasticity in the cortex is required for permanent memory.** *Nature* 2001, **411**:309-313.
- Fukushima, *et al*: **Upregulation of calcium/calmodulin-dependent protein kinase IV improves memory formation and rescues memory loss with aging.** *J Neurosci* 2008, **28**:9910-9919, 2008.
- von Herten LS, Giese KP: **Alpha-isoform of Ca2+/calmodulin-dependent kinase II autophosphorylation is required for memory consolidation-specific transcription.** *Neuroreport* 2005, **16**:1411-1414.
- Jones MW, Errington ML, French PJ, Fine A, Bliss TV, Garel S, Charnay P, Bozon B, Laroche S, Davis S: **A requirement for the immediate early gene Zif268 in the expression of late LTP and long-term memories.** *Nat Neurosci* 2001, **4**:289-296.
- Yamasaki N, Maekawa M, Kobayashi K, Kajii Y, Maeda J, Soma M, Takao K, Tanda K, Ohira K, Toyama K, Kanzaki K, Fukunaga K, Sudo Y, Ichinose H, Ikeda M, Iwata N, Ozaki N, Suzuki H, Higuchi M, Suhara T, Yuasa S, Miyakawa T: **Alpha-CaMKII deficiency causes immature dentate gyrus, a novel candidate endophenotype of psychiatric disorders.** *Mol Brain* 2008, **1**:6.
- Kitamura T, Saitoh Y, Takashima N, Murayama A, Niibori Y, Ageta H, Sekiguchi M, Sugiyama H, Inokuchi K: **Adult neurogenesis modulates the hippocampus-dependent period of associative fear memory.** *Cell* 2009, **139**:814-827.
- Kee N, Teixeira CM, Wang AH, Frankland PW: **Preferential incorporation of adult-generated granule cells into spatial memory networks in the dentate gyrus.** *Nat Neurosci* 2007, **10**:355-362.
- Hojjati MR, van Woerden GM, Tyler WJ, Giese KP, Silva AJ, Pozzo-Miller L, Elgersma Y: **Kinase activity is not required for alphaCaMKII-dependent presynaptic plasticity at CA3-CA1 synapses.** *Nat Neurosci* 2007, **10**:1125-1127.
- Amada N, Aihara K, Ravid R, Horie M: **Reduction of NR1 and phosphorylated Ca2+/calmodulin-dependent protein kinase II levels in Alzheimer's disease.** *Neuroreport* 2005, **16**:1809-1813.
- Townsend M, Mehta T, Selkoe DJ: **Soluble Abeta inhibits specific signal transduction cascades common to the insulin receptor pathway.** *J Biol Chem* 2007, **282**:33305-33312.
- Zeng Y, Zhao D, Xie CW: **Neurotrophins enhance CaMKII activity and rescue amyloid-beta-induced deficits in hippocampal synaptic plasticity.** *J Alzheimers Dis* 2010, **21**:823-831.

32. Phillips RG, LeDoux JE: Lesions of the dorsal hippocampal formation interfere with background but not foreground contextual fear conditioning. *Learn Mem* 1994, 1:34-44.
33. Paxinos G, Franklin KJ: *The Mouse Brain in Stereotaxic Coordinates*. Academic Press; 2001.

doi:10.1186/1756-6606-4-8

**Cite this article as:** Irvine *et al.*: Properties of Contextual Memory Formed in the Absence of  $\alpha$ CaMKII Autophosphorylation. *Molecular Brain* 2011 4:8.

**Submit your next manuscript to BioMed Central  
and take full advantage of:**

- Convenient online submission
- Thorough peer review
- No space constraints or color figure charges
- Immediate publication on acceptance
- Inclusion in PubMed, CAS, Scopus and Google Scholar
- Research which is freely available for redistribution

Submit your manuscript at  
[www.biomedcentral.com/submit](http://www.biomedcentral.com/submit)

