

Published in final edited form as:

J Neurosci. 2011 August 3; 31(31): 11370–11375. doi:10.1523/JNEUROSCI.1526-11.2011.

OPERANT CONDITIONING OF RAT SOLEUS H-REFLEX OPPOSITELY AFFECTS ANOTHER H-REFLEX AND CHANGES LOCOMOTOR KINEMATICS

Yi Chen, Lu Chen, Yu Wang, Jonathan R. Wolpaw, and Xiang Yang Chen

Laboratory of Neural Injury and Repair, Wadsworth Center, New York State Dept Health & State University of New York at Albany, Albany, NY 12201-0509

Abstract

H-reflex conditioning is a model for studying the plasticity associated with a new motor skill. We are exploring its effects on other reflexes and on locomotion.

Rats were implanted with EMG electrodes in both solei (SOL_R and SOL_L) and right quadriceps (QD_R), and stimulating cuffs on both posterior tibial (PT) nerves and right posterior femoral nerve. When SOL_R EMG remained in a defined range, PT_R stimulation just above M-response threshold elicited the SOL_R H-reflex. Analogous procedures elicited the QD_R and SOL_L H-reflexes. After a control period, each rat was exposed for 50 days to a protocol that rewarded SOL_R H-reflexes that were above (HRup rats) or below (HRdown rats) a criterion.

HRup conditioning increased the SOL_R H-reflex to 214(±37SEM)% of control (P=0.02) and decreased the QD_R H-reflex to 71(±26)% (P=0.06). HRdown conditioning decreased the SOL_R H-reflex to 69(±2)% (P<0.001) and increased the QD_R H-reflex to 121(±7)% (P=0.02). These changes remained during locomotion. The SOL_L H-reflex did not change. During the stance phase of locomotion, ankle plantarflexion increased in HRup rats and decreased in HRdown rats, hip extension did the opposite, and hip height did not change.

The plasticity that changes the QD_R H-reflex and locomotor kinematics may be inevitable (i.e., reactive) due to the ubiquity of activity-dependent CNS plasticity, and/or necessary (i.e., compensatory) to preserve other behaviors (e.g., locomotion) that would otherwise be disturbed by the change in the SOL_R H-reflex pathway. The changes in joint angles, coupled with the preservation of hip height, suggest that compensatory plasticity did occur.

INTRODUCTION

The spinal stretch reflex (SSR) (i.e., the tendon jerk) and its electrical analog, the H-reflex are the simplest motor behaviors. They are produced primarily by a two-neuron, monosynaptic pathway comprised of the primary afferent fiber, its synapse on the motoneuron, and the motoneuron itself (Wolpaw et al., 1983, Wolpaw, 1987). Because it is affected by descending activity from the brain, this pathway can be operantly conditioned. In response to a conditioning protocol, monkeys, humans, rats, and mice can gradually increase (i.e., up-conditioning) or decrease (i.e., down-conditioning) the SSR or the H-reflex (Wolpaw 2010 for review). The larger or smaller reflex that results is a simple motor skill (i.e., “an adaptive behavior acquired through practice” (Chen et al. 2005)). H-reflex

conditioning is accompanied by neuronal and synaptic plasticity at multiple sites in the spinal cord and brain (Wolpaw and Chen 2009 for review).

H-reflex conditioning is a powerful model for exploring the mechanisms and principles of skill acquisition and maintenance (Wolpaw 2010). The spinal cord is the final common pathway for all motor behavior, and spinal cord plasticity has a part in the acquisition and maintenance of many motor skills. Furthermore, by virtue of their simplicity, accessibility, separation from the brain, and closeness to behavior, the spinal cord in general and the H-reflex in particular are uniquely suited for studying how activity-dependent plasticity (particularly gradual plasticity) explains behavior, and for formulating concepts and identifying principles that may apply to learning throughout the CNS.

Because the spinal cord is the final common pathway for motor output, the spinal cord plasticity associated with H-reflex conditioning affects other behaviors. For example, in normal rats, right soleus H-reflex up- and down-conditioning produce corresponding changes in the right soleus burst during locomotion (Chen et al. 2005). Nevertheless, despite this change, the right/left symmetry of the step cycle is preserved. This suggests that changes in other reflex pathways compensate for the locomotor effects of the change in the soleus H-reflex pathway. This hypothesis is supported by other evidence that the functional effects of H-reflex conditioning extend beyond the conditioned reflex, and even to the contralateral side of the spinal cord (Wolpaw and Lee 1989).

The present study is the first effort to determine whether soleus H-reflex conditioning affects the H-reflex of a hindlimb muscle group (i.e., quadriceps (QD)) that operates about different joints (i.e., knee and hip rather than ankle), and whether it affects joint angles during locomotion. The data show that soleus H-reflex conditioning has a markedly different effect on the QD H-reflex and produces distinctive multi-joint kinematic changes during locomotion. They indicate that the acquisition of an ostensibly simple new skill has an impact that extends beyond the new skill to affect a crucial older skill, and they raise important new questions.

METHODS

Twenty-six male Sprague-Dawley rats (439(±44 SD) g initially) were studied. All procedures satisfied the “Guide for the Care and Use of Laboratory Animals” (National Academy Press, Washington, D.C., 2011), and had been approved by the Wadsworth Center Institutional Animal Care and Use Committee. The methods have been fully described previously (Chen and Wolpaw 1995, 2002; Chen et al. 2005, 2006a, 2006b) and are summarized here.

Electrode implantation

Under general anesthesia (ketamine HCl (80 mg/kg) and xylazine (10 mg/kg) (both i.p.) or sodium pentobarbital (60 mg/kg, i.p.), supplemented as needed) and aseptic conditions, each rat was implanted with chronic stimulating and recording electrodes in the right and left legs. To elicit H-reflexes in the right and left solei (SOL_R and SOL_L), cuffs were placed on the right and left posterior tibial (PT_R and PT_L) nerves just above the triceps surae branches. To elicit the H-reflex of the right quadriceps muscle group (QD_R), a similar cuff was placed on the right posterior division of the femoral (PF_R) nerve. To record SOL_R, SOL_L, and QD_R EMG, a pair of stainless steel fine-wire electrodes was implanted in each. The soleus acts about the ankle joint to plantarflex the foot. The QD group comprises four muscles: vastus lateralis, medialis, and intermedialis, and rectus femoris. All four act about the knee to dorsiflex (i.e., extend) the calf, and the rectus femoris also acts about the hip to flex the thigh (i.e., to move it forward and up). The two QD_R EMG electrodes were placed laterally

(targeting vastus lateralis) and medially (targeting vastus medialis), respectively, so that their data would represent the entire QD muscle group. The Teflon-coated wires from all the electrodes passed subcutaneously to a connector on the skull.

After surgery, the rat was placed under a heating lamp and given an analgesic (Demerol, 0.2 mg, intramuscular). Once awake, it received a second dose of analgesic and was returned to its cage and allowed to eat and drink freely.

Experimental design and SOL_R H-reflex conditioning

Data collection began at least 20 days after surgery and continued 24 hrs/day, 7 days/week for at least 70 days. During this period, the rat lived in a standard rat cage with a 40-cm flexible cable attached to the skull connector. The cable, which allowed the animal to move freely about the cage, connected to a commutator above the cage that connected to EMG amplifiers (gain 1000, bandwidth 100–1000 Hz) and the nerve-cuff stimulation units. The rat had free access to water and food, except that during H-reflex conditioning it received food mainly by performing the task described below. Animal well-being was carefully checked several times each day, and body weight was measured weekly. Laboratory lights were dimmed from 2100 to 0600 daily.

Stimulus delivery and data collection were controlled by a computer, which sampled (5 kHz) SOL_R, SOL_L, and QD_R EMG continuously for the entire period of study. SOL_R and SOL_L H-reflexes were elicited simultaneously as follows. Whenever the absolute value (i.e., the full-wave rectified value) of background (i.e., ongoing) EMG in each muscle remained within a pre-defined range for a randomly varying 2.3–2.7 s period, the computer initiated a trial. In each trial, the computer stored the most recent 50 ms of EMG from all three muscles (i.e., the background EMG interval), delivered simultaneous monophasic stimulus pulses through the cuffs on the PT_R and PT_L nerves, and stored the EMG from all muscles for another 100 ms. A comparable procedure elicited the QD_R H-reflex by stimulating the PF_R nerve whenever ongoing QD_R EMG remained within a pre-defined range. Because SOL and QD H-reflex trials occurred only when the muscles satisfied their background EMG requirements, SOL and QD H-reflex trials seldom occurred in close proximity to each other.

Stimulus pulse amplitude and duration were initially set to produce a maximum H-reflex (and an M response that was typically just above threshold) in the muscle served by the stimulated nerve. Pulse duration remained fixed (typically 0.5 ms). After each trial, pulse amplitude was adjusted automatically to maintain the M response (i.e., average EMG amplitude in the M response interval (typically 2.0–5.0 ms in SOL_R and SOL_L and 1.5–4.5 ms in QD_R)) unchanged throughout data collection. (This ensured that the effective strength of the stimulus was stable throughout (Wolpaw 1987; Chen and Wolpaw 1995).) H-reflex size was defined as average EMG amplitude in the H-reflex interval (typically 6–10 ms in SOL_R and SOL_L and 4.5–8.5 ms in QD_R) minus the muscle's average background EMG amplitude.

Under the control mode, the computer simply digitized and stored the EMG from each muscle for 100 ms following the stimulus. Under the SOL_R up-conditioning (HRup) or down-conditioning (HRdown) mode, it also gave a food pellet-reward 200 ms after the PT_R nerve stimulation if the average amplitude of SOL_R EMG in the H-reflex interval was above (HRup) or below (HRdown) a criterion. The criterion was set and adjusted daily as needed, so that the rat received an adequate amount of food (about 1000 pellets/day for a 500-gm rat).

Each rat was first studied under the control mode for about 20 days. It was then exposed to SOL_R up-conditioning (HRup rats) or down-conditioning (HRdown rats) for 50 days. The

last 10 control-mode days and the last 10 HRup or HRdown days (i.e., days 41–50 of conditioning) provided the data used to assess the impact of SOL_R H-reflex conditioning on SOL_R, QD_R, and SOL_L H-reflexes.

H-reflex and kinematic measurements during treadmill locomotion

SOL_R and QD_R locomotor H-reflexes and right hindlimb kinematics were studied in two treadmill sessions, one during the control-mode days and one near the end of SOL_R HRup or HRdown conditioning. Treadmill speed was the same in both sessions (typically 10–12 m/min), and EMG was continuously recorded (0.1–1.0 kHz bandpass), digitized (4.0 kHz), and stored.

In each session, reflex data were collected for two 4–5 min periods. In one, the PT_R nerve was stimulated to elicit the SOL_R H-reflex, and in the other the PF_R nerve was stimulated to elicit the QD_R H-reflex. The nerve was stimulated when its muscle's EMG had remained in a specified high range for 200 ms. Thus the stimulus typically occurred in the later part of the right stance phase of the step cycle (about 100 ms past the middle of the muscle's locomotor burst). Stimulus amplitude was kept just above M-response threshold as described above. (H-reflex elicitation during stance meant that the reflex was measured at a time when its pathway is likely to affect locomotion.) In addition, the rat was videotaped (60 frames/sec) from the right side during 4–5 min of treadmill walking without nerve stimulation.

Those trials for which SOL_R or QD_R EMG amplitude for the 20 ms immediately before the stimulus and M-response size satisfied specified criteria were averaged by triggering on the stimuli. Thus, the average pre-stimulus EMG amplitudes and M-response sizes were the same for the two treadmill sessions.

In video analysis, we identified the right stance-phase images and, using marks on the ankle, knee, and hip, calculated for the entire stance phase the average anterior hip angle (i.e., hip extension: the angle of the thigh to a horizontal line projecting forward from the hip), posterior knee angle, and anterior ankle angle (i.e., ankle plantarflexion), and the average height of the hip above the treadmill surface.

Statistical analysis

The data fell into three categories. The first category consisted of SOL_R, QD_R, and SOL_L H-reflexes elicited under the conditioning protocol, that is, throughout the day as the rat moved freely about its home cage. These are henceforth called “conditioning H-reflexes.” The second category consisted of SOL_R and QD_R H-reflexes during the right stance phase of locomotion. These are called “locomotor H-reflexes.” The third category consisted of average right stance-phase ankle, knee, and hip angles and average hip heights.

For each conditioning reflex, a paired t-test compared the average value for the last 10 days of SOL_R HRup or HRdown conditioning to that for the last 10 control-mode days. For each locomotor reflex and joint angle and for hip height, a paired t-test compared the value for the second treadmill session to that for the first treadmill session.

Animal perfusion and anatomical study

At the end of study, each rat received an overdose of sodium pentobarbital (i.p.) and was perfused through the heart. The EMG electrodes, nerve cuffs, and PT and PF nerves were examined and the SOL muscles of both sides were removed and weighed.

RESULTS

Animals remained healthy and active throughout study. Body weight increased from 439(\pm 44SD) g at implantation to 568(\pm 54) g at perfusion. In all rats, postmortem examination found that the cuffs were in place and covered by connective tissue, and that the nerves were well preserved. SOL_R and SOL_L weights did not differ significantly, nor did they differ from those of 113 normal rats previously studied.

Effects of SOL_R H-reflex conditioning on SOL_R, QD_R, and SOL_L conditioning H-reflexes

To determine the final effect on each muscle's conditioning H-reflex size of SOL_R HRup or HRdown conditioning, the muscle's average H-reflex size for the final 10 days of conditioning was calculated as percent of its initial H-reflex size (i.e., average of final 10 control-mode days). As in previous studies, successful SOL_R H-reflex conditioning was defined as a change \geq 20% in the correct direction. By this criterion, SOL_R H-reflex conditioning was successful in 9 HRup and 8 HRdown rats. In the remaining rats (4 HRup and 5 HRdown), the final SOL_R H-reflex was within 20% of its initial value.

Figure 1 shows the average final values (\pm SEM) of SOL_R, QD_R, and SOL_L H-reflexes, M responses, and background EMG in the successful HRup (left) and HRdown (right) rats in percent of their initial values. In accord with the goal of the conditioning protocol, the final SOL_R H-reflex is markedly and significantly increased in HRup rats ($P=0.02$, paired t-test) and decreased in HRdown rats ($P<0.001$). In contrast, SOL_R HRup or HRdown conditioning oppositely affected the QD_R H-reflex: the final QD_R H-reflex appears to be smaller in SOL_R HRup rats ($P=0.06$), and is larger in SOL_R HRdown rats ($P=0.02$). At the same time, neither SOL_R HRup or HRdown conditioning has a noticeable effect on SOL_L H-reflexes. In all rats, M responses and background EMG do not change.

Figure 2 shows initial and final SOL_R and QD_R H-reflexes for an HRup rat (left) and an HRdown rat (right). In the HRup rat, the SOL_R H-reflex is markedly larger after conditioning while the QD_R H-reflex is smaller. Conversely, in the HRdown rat, the SOL_R H-reflex is much smaller after conditioning while the QD_R H-reflex is larger.

Effects of SOL_R H-reflex conditioning on SOL_R and QD_R locomotor H-reflexes

In 7 of the 9 successful HRup rats and 6 of the 8 successful HRdown rats, SOL_R and QD_R locomotor H-reflexes were also studied during the stance phase of locomotion before and after SOL_R H-reflex conditioning. For these rats, Figure 3A shows average final values (\pm SEM) of SOL_R and QD_R locomotor H-reflexes in percent of their initial control values. SOL_R H-reflex conditioning has effects on the SOL_R and QD_R locomotor H-reflexes comparable to its effects on the conditioning H-reflexes. Indeed, the effects on the locomotor H-reflexes are even more prominent. Final SOL_R locomotor H-reflexes are markedly and significantly increased in HRup rats ($P=0.004$) and decreased in HRdown rats ($P=0.01$). In contrast, SOL_R HRup or HRdown conditioning has an opposite effect on the QD_R locomotor H-reflex: it appears to be smaller in SOL_R HRup rats ($P=0.07$) and is significantly larger in SOL_R HRdown rats ($P=0.004$).

Figure 3B shows initial and final SOL_R and QD_R locomotor H-reflexes for one HRup rat (left) and one HRdown rat (right). In the HRup rat, the SOL_R H-reflex is markedly larger after conditioning while the QD_R H-reflex is smaller. Conversely, in the HRdown rat, the SOL_R H-reflex is smaller after conditioning while the QD_R H-reflex is larger.

In the unsuccessful rats, final SOL_R and QD_R locomotor H-reflexes varied widely across animals. The SOL_R locomotor H-reflex actually increased in 3 of the 5 unsuccessful HRdown rats, despite the fact that the SOL_R conditioning H-reflex did not change in any of

them. This result is consistent with an earlier study (Chen et al., 2005), and suggests that the lack of change in the conditioning H-reflex does not necessarily mean that conditioning has had no impact (Chen et al. (2005) for discussion).

Effects of SOL_R H-reflex conditioning on ankle, knee, and hip angles and hip height

In 5 successful HRup rats and 6 successful HRdown rats, average right ankle, knee, and hip angles and hip height during the stance phase of treadmill locomotion were determined before and after SOL_R H-reflex conditioning. Figure 4 shows, for each rat, the final values (\pm SEM) of these measures in percent of their initial values. In HRup rats, final anterior ankle angles were larger ($P=0.04$) (i.e., the ankle was more plantarflexed) and final anterior hip angles tended to be smaller (i.e., the hip was less extended) ($P=0.13$). In contrast, in HRdown rats, final ankle angles were smaller ($P=0.008$) and final hip angles were larger ($P=0.03$). Neither HRup nor HRdown conditioning significantly affected knee angle or hip height.

DISCUSSION

Operant conditioning of the rat SOL_R H-reflex has an opposite effect on the QD_R H-reflex: in SOL_R HRup rats the QD_R H-reflex usually goes down, and in SOL_R HRdown rats the QD_R H-reflex goes up. These QD_R H-reflex changes, like the SOL_R changes, are still present, perhaps even greater, during locomotion. They occur despite the fact that they do not affect reward probability; the QD_R H-reflex is elicited at different times from the SOL_R H-reflex and is never associated with a reward. Nevertheless, it changes. Furthermore, SOL_R H-reflex conditioning has effects on ankle angle during locomotion that are consistent with the SOL_R H-reflex changes; and, in addition, it has opposite effects on hip angle, the etiology of which is not known at present.

The plasticity responsible for change in the QD_R H-reflex

The QD_R H-reflex is the earliest possible CNS-mediated QD response to the PF_R nerve stimulus. Thus, the changes in QD_R H-reflex size associated with SOL_R H-reflex conditioning could reflect plasticity in the reflex pathway itself or plasticity in neurons or synapses that provide tonic input to the pathway, input that is there before the nerve stimulus. At present, evaluation of these two possibilities rests mainly on what is known about the change in the H-reflex that controls the reward (i.e., the conditioned H-reflex).

Physiological and anatomical studies (reviewed in Wolpaw and Chen 2009; Wolpaw 2010) indicate that the change in the reflex being conditioned (i.e., the SOL_R H-reflex) is due mainly to plasticity in the motoneuron and/or the afferent pathway from the nerve stimulus, and that this plasticity is caused by change in corticospinal tract (CST) activity (which may pass through GABAergic interneurons in spinal laminae 6 and 7). For example, down-conditioning appears to be due mainly to a positive shift in motoneuron firing threshold (Carp and Wolpaw 1994). Furthermore, the change in the conditioned reflex is still evident when tonic inputs are greatly reduced or entirely eliminated (Wolpaw and Lee 1989). These findings suggest that the QD_R H-reflex change reflects comparable plasticity in the QD_R H-reflex pathway. This conclusion is supported by the fact that the QD_R H-reflex change is still evident during locomotion, which would be expected to modify tonic inputs.

The etiology of the change in the QD_R H-reflex and in hip angle

The plasticity that changes the QD_R H-reflex or hip angle might occur in two ways. First, it might be an inevitable consequence of the fact that the capacity for activity-dependent plasticity is ubiquitous in the CNS. For example, the same CST activity that changes the SOL_R H-reflex pathway might also produce an opposite change in the QD_R H-reflex

pathway. Such inverse effects on different muscles can occur with supraspinal lesions (e.g., Thompson et al. 2009b). Furthermore, the plasticity in the SOL_R H-reflex pathway, by changing ongoing activity in intraspinal pathways, might itself induce plasticity in the QD_R H-reflex. Comparable plasticity in spinal pathways that affect hip muscles might account for the change in hip angle. Plasticity created in such ways reflects the activity-dependent properties of individual neurons and synapses. Thus, its etiology is local, and it can be called “reactive” plasticity (Wolpaw 1997). A simple example of reactive plasticity is synaptic desensitization caused by increased synaptic input (e.g., Otis et al. 1996).

The second possible etiology of the QD_R H-reflex change or the hip angle change is that it is adaptive, that it helps to compensate for the impact of SOL_R H-reflex conditioning on other behaviors. Because the spinal cord is the final common pathway for many behaviors, the plasticity in the SOL_R H-reflex pathway that increases reward probability affects other behaviors that also use this pathway. Indeed, SOL_R H-reflex conditioning can be used to improve locomotion after a partial spinal cord injury (Chen et al. 2006b). In normal rats with normal locomotion, such side effects of H-reflex conditioning may induce additional activity-dependent plasticity that preserves normal locomotion (or other important behaviors). Chen et al. (2005) found that conditioning of the SOL_R H-reflex changed SOL locomotor activity, but did not affect step-cycle length or symmetry, suggesting that other changes had preserved these major parameters of the step-cycle. This additional plasticity can be called “compensatory” (Wolpaw 1997). Unlike reactive plasticity, which originates locally, compensatory plasticity is induced and shaped by interactions between the CNS and the external world (Wolpaw 2010 for discussion).

The present kinematic results suggest that SOL_R H-reflex conditioning does produce compensatory plasticity. SOL_R H-reflex conditioning had effects on stance-phase ankle plantarflexion that are consistent with the SOL_R H-reflex change: increase in HRup rats and decrease in HRdown rats. At the same time, it had opposite effects on hip extension: decrease in HRup rats and increase in HRdown rats. These opposite changes in hip angle appear to explain why hip height was not significantly changed despite the changes in ankle angle (i.e., Fig. 4).

A unilateral change in hip height during locomotion would presumably twist the thorax, which would probably have widespread short-term and long-term musculoskeletal effects. Nociceptive or other sensory inputs produced by this twisting might operantly condition compensatory plasticity that eliminates the twisting and preserves hip height. Thus, like step-cycle symmetry (Chen et al. 2005), hip-height symmetry during locomotion may be a functionally important parameter; and an intervention that disrupts it, such as SOL_R H-reflex conditioning (which changes stance-phase foot plantarflexion), may induce compensatory plasticity that prevents the disruption. Whether the change in hip angle does reflect compensatory plasticity, whether reflex changes account for it, and why knee angle does not change instead (or in addition), are questions that will hopefully be elucidated by the comprehensive kinematic and reflex studies now underway (Liu et al. 2010).

Therapeutic applications of spinal reflex conditioning

H-reflex conditioning can improve locomotion in rats after a partial spinal cord injury (Chen et al. 2006b). Initial studies suggest that it can be effective in humans with spinal cord injuries, and they indicate that it requires only a small fraction of the conditioning trials normally used in animals (Pomerantz et al. 2010, Thompson et al. 2009a). The ability to target specific pathways could enable reflex conditioning protocols to supplement other therapeutic interventions such as locomotor training (Harkema et al. 2011). These protocols could be particularly useful when spinal cord regeneration becomes possible and methods are needed for guiding plasticity to produce a functionally effective spinal cord.

In the context of such therapeutic possibilities, the present results are both sobering and encouraging. They indicate the complexity of the effects that might accompany this new approach. At the same time, by suggesting that the plasticity induced by reflex conditioning may target the preservation (or restoration) of important functional parameters (e.g., hip height), they encourage further exploration of its therapeutic applications.

CONCLUSIONS

Soleus H-reflex conditioning also affects the H-reflex of the quadriceps muscle group, which operates about different joints, and it changes locomotor kinematics at both the ankle and the hip. The quadriceps H-reflex change remains evident during locomotion, and is probably due to plasticity in that H-reflex pathway. The change in hip angle is likely to reflect compensatory plasticity that preserves hip height in spite of the change in ankle angle. These results are striking evidence of the complex effects of acquiring an ostensibly simple skill. Their further study may illuminate the etiology and functional impact of the complex plasticity associated with new skills, and may guide development of new methods to improve function after trauma or disease.

Acknowledgments

We thank Ms. Rongliang Liu for excellent technical assistance, and Drs. Jonathan S. Carp, Dennis J. McFarland, and Elizabeth Winter Wolpaw for valuable comments on the manuscript. This work was supported by NIH grants NS061823 (JRW&XYC), HD36020(XYC), and NS22189(JRW), and the New York State Spinal Cord Injury Research Trust Fund (XYC).

References

- Carp JS, Wolpaw JR. Motoneuron plasticity underlying operantly conditioned decrease in primate H-reflex. *J Neurophysiol.* 1994; 72:431–442. [PubMed: 7965025]
- Chen XY, Wolpaw JR. Operant conditioning of H-reflex in freely moving rats. *Journal of Neurophysiology.* 1995; 73:411–415. [PubMed: 7714584]
- Chen XY, Wolpaw JR. Probable corticospinal tract control of spinal cord plasticity in rats. *J Neurophysiol.* 2002; 87:645–652. [PubMed: 11826033]
- Chen XY, Chen Y, Chen L, Wolpaw JR. Operant conditioning of reciprocal inhibition in rat soleus muscle. *J Neurophysiol.* 2006a; 96:2144–2150. [PubMed: 16807351]
- Chen Y, Chen XY, Jakeman LB, Schalk G, Stokes BT, Wolpaw JR. The interaction of a new motor skill and an old one: H-reflex conditioning and locomotion in rats. *J Neurosci.* 2005; 25:6898–6906. [PubMed: 16033899]
- Chen Y, Chen XY, Jakeman LB, Chen L, Stokes BT, Wolpaw JR. Operant conditioning of H-reflex improves locomotion after spinal cord injury in rats. *J Neurosci.* 2006b; 26:12537–12543. [PubMed: 17135415]
- Liu, RL.; Chen, Y.; Chen, L.; Wang, Y.; Wolpaw, JR.; Chen, XY. Program No. 82.18. 2010 Abstract Viewer/Itinerary Planner. Washington, DC: Society for Neuroscience, Online; 2010. Effects of soleus H-reflex conditioning on hip, knee, and ankle extensor and flexor muscles: methods and initial results.
- Harkema, S.; Behrman, A.; Barbeau, H. Principles and Practice. Oxford University Press; 2011. Locomotor Training.
- Otis T, Zhang S, Trussell LO. Direct measurement of AMPA receptor desensitization induced by glutamatergic synaptic transmission. *J Neurosci.* 1996; 16:7496–7504. [PubMed: 8922405]
- Pomerantz, F.; Wolpaw, JR.; Lichtman, SW.; Abel, B.; DeFrancesco, E.; Thompson, AK. Operant down conditioning of the soleus H-reflex in people with spasticity due to chronic incomplete spinal cord. injury. Society for Neuroscience 40th Annual Meeting, Program No. 82.14; 2010.

- Thompson AK, Chen XY, Wolpaw JR. Acquisition of a simple skill: task-dependent adaptation plus long-term change in the human soleus H-reflex. *Journal of Neuroscience*. 2009a; 29:5784–5792. [PubMed: 19420246]
- Thompson AK, Estabrooks KL, Chong S, Stein RB. Spinal reflexes in ankle flexor and extensor muscles after chronic central nervous system lesions and functional electrical stimulation. *Neurorehabilitation and Neural Repair*. 2009b; 23:133–142. [PubMed: 19023139]
- Wolpaw JR. Operant conditioning of primate spinal reflexes: the H reflex. *J Neurophysiol*. 1987; 57:443–458. [PubMed: 3559687]
- Wolpaw JR. The complex structure of a simple memory. *Trends Neurosci*. 1997; 20:588–594. [PubMed: 9416673]
- Wolpaw JR. What can the spinal cord teach us about learning and memory? *The Neuroscientist*. 2010; 16:532–549. [PubMed: 20889964]
- Wolpaw JR, Braitman DJ, Seegal RF. Adaptive plasticity in the primate spinal stretch reflex: Initial development. *J Neurophysiol*. 1983; 50:1296–1311. [PubMed: 6663327]
- Wolpaw, JR.; Chen, XY. Operant Conditioning of Reflexes. In: Squire, LR., editor. *Encyclopedia of Neuroscience*. Vol. 7. Oxford: Academic Press; 2009. p. 225-233.
- Wolpaw JR, Lee CL. Memory traces in primate spinal cord produced by operant conditioning of H-reflex. *J Neurophysiol*. 1989; 61:563–572. [PubMed: 2709100]

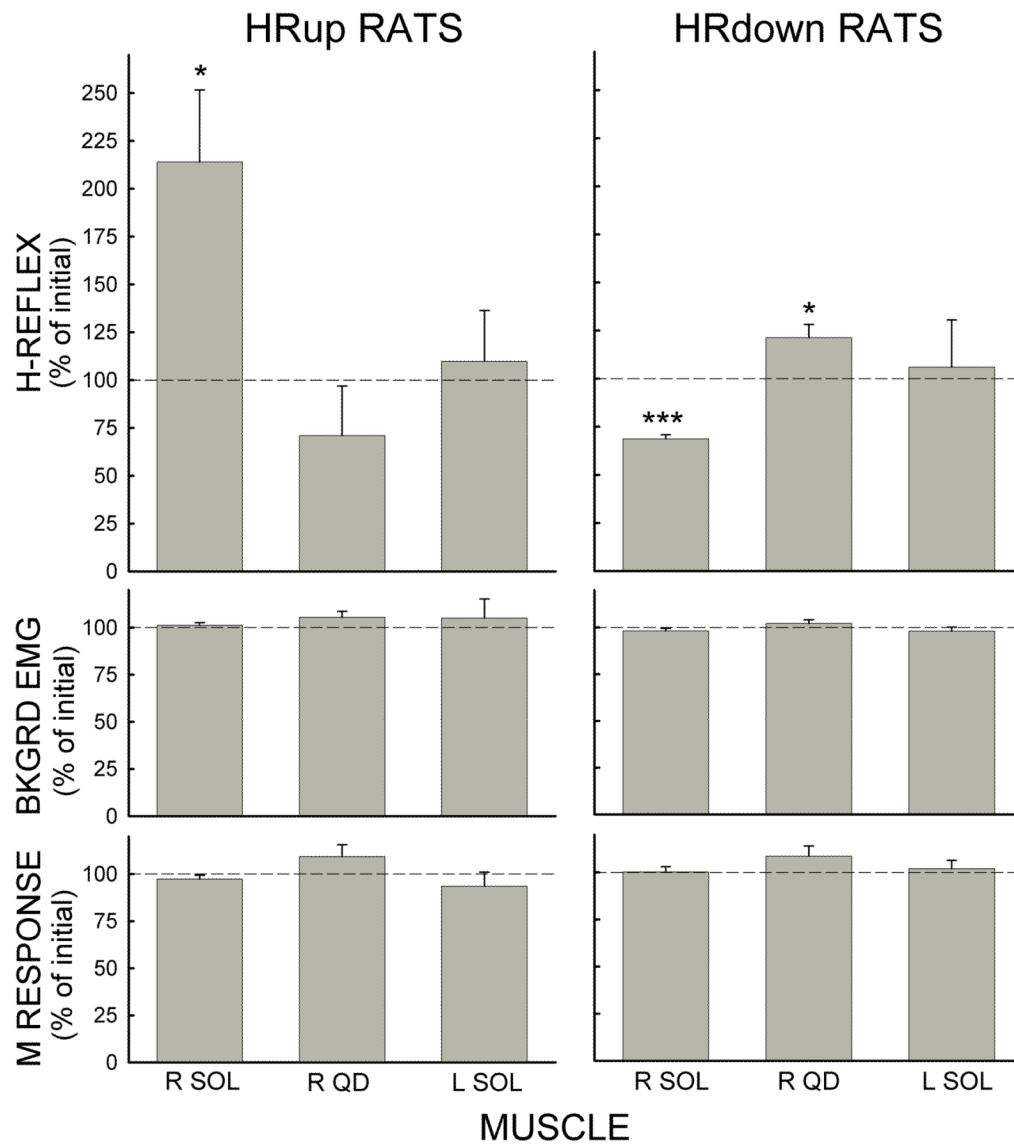


Figure 1. Effects of SOL_R HRup and HRdown conditioning. Average final conditioning H-reflex, background EMG, and M response (in % of their initial values) of SOL_R, QD_R, and SOL_L for the successful HRup and HRdown rats. P values for difference from initial value by paired t-test are shown. *: P<0.05; ***: P<0.001.

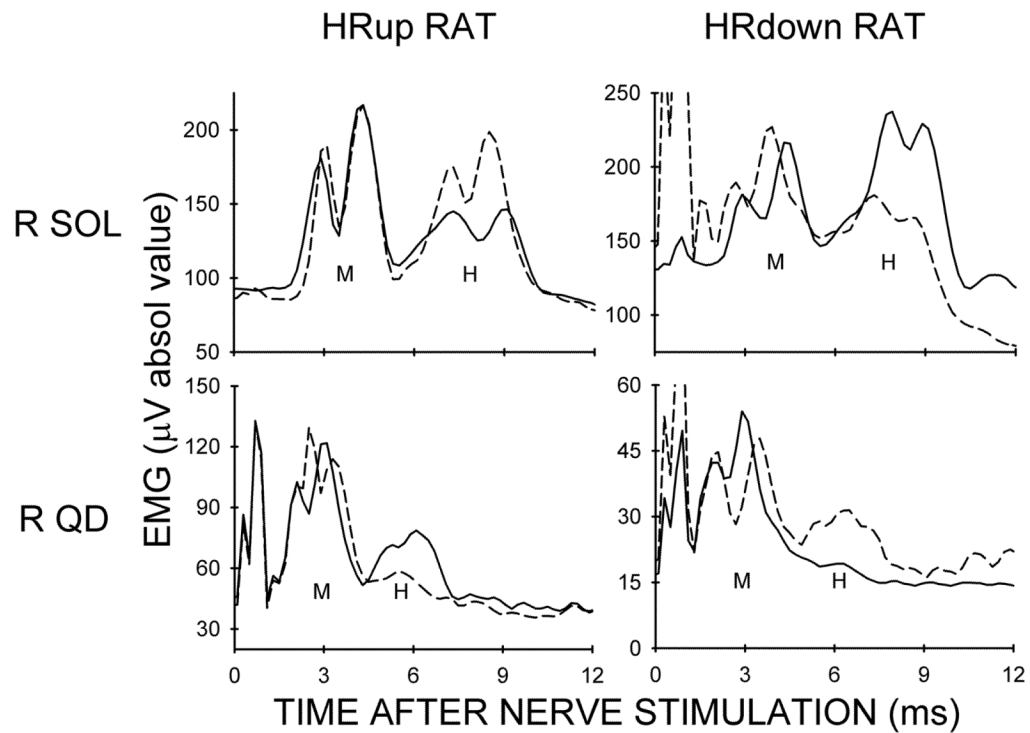


Figure 2. Effects of SOL_R HRup and HRdown conditioning on the conditioning H-reflexes of representative rats. Average post-stimulus SOL_R and QD_R EMG for a control day (solid) and a day near the end of conditioning (dashed) for an HRup rat and an HRdown rat. After HRup conditioning the SOL_R H-reflex is larger and the QD_R H-reflex is smaller, while after HRdown conditioning the SOL_R H-reflex is smaller and the QD_R H-reflex is larger. Background EMG (EMG at time zero) and M-responses do not change. Peaks in the first 1–2 ms after stimulation are stimulus artifacts.

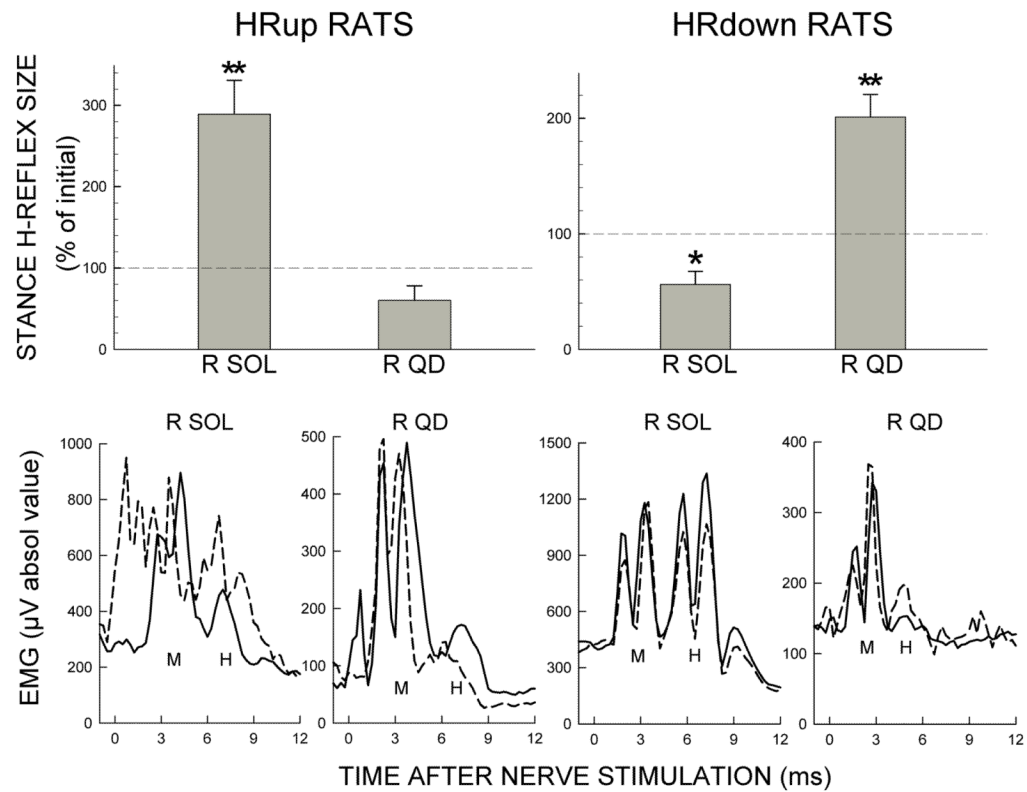


Figure 3.

Effects of SOL_R HRup and HRdown conditioning on the locomotor H-reflexes.

A: Average final locomotor H-reflexes (in % of their initial values) of SOL_R and QD_R muscles for successful HRup (left) and HRdown (right) rats. P values for difference from initial value by paired t-test are shown. *: P<0.05; **: P<0.01.

B: Effects of SOL_R HRup and HRdown conditioning on the locomotor H-reflexes in representative rats. Average post-stimulus SOL_R and QD_R EMG in the stance phase of locomotion during the control-mode (solid) and near the end of conditioning (dashed) for an HRup rat and an HRdown rat. After HRup conditioning, the SOL_R H-reflex is larger and the QD_R H-reflex is smaller, while after HRdown conditioning the SOL_R H-reflex is smaller and the QD_R H-reflex is larger. Pre-stimulus EMG (EMG at time zero) and M-responses are stable. Peaks in the first 1–2 ms after stimulation are stimulus artifacts.

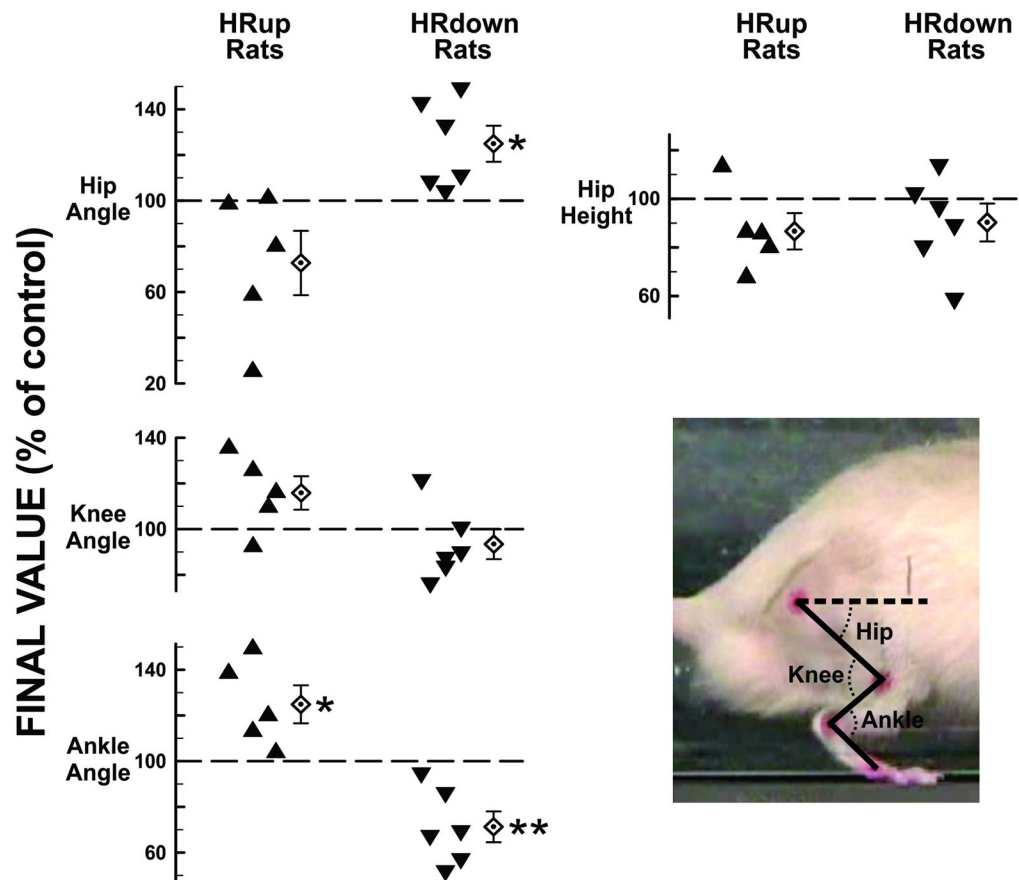


Figure 4.

Kinematic effects of SOL_R HRup and HRdown conditioning. Individual and average (\pm SEM) final right stance-phase anterior ankle, posterior knee, and anterior hip angles (see inset), and hip height (in % of their initial values) for successful HRup (left) and HRdown (right) rats. The dashed horizontal line is parallel to the treadmill surface. P values for difference from the initial value by paired t-test are shown (*: $P < 0.05$; **: $P < 0.01$).