

See discussions, stats, and author profiles for this publication at: <https://www.researchgate.net/publication/44797757>

# Human Stem/Progenitor Cells from Bone Marrow Enhance Glial Differentiation of Rat Neural Stem Cells: A Role for Transforming Growth Factor $\beta$ and Notch Signaling

Article in *Stem cells and development* · February 2011

DOI: 10.1089/scd.2009.0444 · Source: PubMed

CITATIONS

36

READS

106

4 authors:



Andrew Robinson

17 PUBLICATIONS 1,319 CITATIONS

SEE PROFILE



Jessica E Tulloch

University of Washington Seattle

9 PUBLICATIONS 723 CITATIONS

SEE PROFILE



Joni Ylostalo

Texas A&M University System Health Science Center

54 PUBLICATIONS 5,421 CITATIONS

SEE PROFILE



Darwin J. Prockop

Texas A&M University System Health Science Center

728 PUBLICATIONS 71,658 CITATIONS

SEE PROFILE

Some of the authors of this publication are also working on these related projects:



Genomic structures and variations of the genes encoding minor cartilage collagens IX and XI. [View project](#)



The isolation of Non-Hematopoietic Adult Bone Marrow Stem Cells by P75 [View project](#)

# Human Stem/Progenitor Cells from Bone Marrow Enhance Glial Differentiation of Rat Neural Stem Cells: A Role for Transforming Growth Factor $\beta$ and Notch Signaling

Andrew P. Robinson,<sup>\*,‡</sup> Jessica E. Foraker,<sup>‡</sup> Joni Ylostalo,<sup>†</sup> and Darwin J. Prockop<sup>†</sup>

Multipotent stem/progenitor cells from bone marrow stroma (mesenchymal stromal cells or MSCs) were previously shown to enhance proliferation and differentiation of neural stem cells (NSCs) *in vivo*, but the molecular basis of the effect was not defined. Here coculturing human MSCs (hMSCs) with rat NSCs (rNSCs) was found to stimulate astrocyte and oligodendrocyte differentiation of the rNSCs. To survey the signaling pathways involved, RNA from the cocultures was analyzed by species-specific microarrays. In the hMSCs, there was an upregulation of transcripts for several secreted factors linked to differentiation: bone morphogenetic protein 1 (*BMP1*), hepatocyte growth factor (*HGF*), and transforming growth factor isoforms (*TGF $\beta$ 1* and *TGF $\beta$ 3*). In both the hMSCs and the rNSCs, there was an upregulation of transcripts for Notch signaling. The role of *TGF $\beta$ 1* was verified by the demonstration that hMSCs in coculture increased secretion of *TGF $\beta$ 1*, the rNSCs expressed the receptor, and an inhibitor of *TGF $\beta$*  signaling blocked differentiation. The role of Notch signaling was verified by the demonstration that in the cocultures hMSCs expressed a Notch ligand at sites of cell contact with rNSCs, and the rNSCs expressed the receptor, Notch 1. Increased Notch signaling in both cell types was then demonstrated by assays of transcript expression and by a reporter construct for downstream targets of Notch signaling. The results demonstrated that glial differentiation of the rNSCs in the cocultures was driven by increased secretion of soluble factors such as *TGF $\beta$ 1* by the hMSCs and probably through increased cell contact signaling between the hMSCs and rNSCs through the Notch pathway.

## Introduction

NEURAL STEM CELLS (NSCs) are currently generating interest for their potential therapeutic benefits as well as their intrinsic role in central nervous system (CNS) processes, including memory, aging, depression, and a host of neurodegenerative diseases [1]. Endogenous NSCs are known to reside in at least 2 germinal zones in the adult CNS and are an inherently proliferating population capable of undertaking migration in addition to differentiating down neuronal as well as glial lineages [2]. Because of their multipotentiality and capacity for self-renewal, NSCs were originally seen as an endogenous source for cellular replacement following CNS injury [3]. In addition to cellular replacement, recent evidence suggests that NSCs may be therapeutically beneficial through immunomodulation of the damaged environment, protective mechanisms limiting the degree of damage, and enhancement of endogenous repair mechanisms following neurologic insult [4]. These

effects may be mediated by NSC secretion of trophic support or through direct cell–cell contact.

The nonhematopoietic population of adult stem/progenitor cells from bone marrow referred to as mesenchymal stem cells or multipotent mesenchymal stromal cells (MSCs) were shown to produce therapeutic effects in numerous animal models of neurodegenerative diseases, including cerebral ischemia, Parkinson's disease, multiple sclerosis, spinal cord injury, and traumatic brain injury [5–10]. Given their ability to home to multiple tissues, including the CNS, MSCs may be a viable means to stimulate the endogenous NSC population to assume a neuroprotective or neuroregenerative role. Indeed MSCs produce a large number of growth-stimulating factors, including neurotrophins *in vitro* and *in vivo* [11,12]. An intriguing recent observation was that following implantation into the hippocampi of immunodeficient mice, human MSCs (hMSCs) stimulated the proliferation and dorsal migration of endogenous BrdU-labeled NSCs [12–14]. Despite limited survival of the MSCs, BrdU-labeled NSCs

Center for Gene Therapy, Tulane University Health Sciences Center, New Orleans, Louisiana.

<sup>\*</sup>Present address: Department of Microbiology-Immunology, Northwestern University, Chicago, Illinois.

<sup>†</sup>Present address: Texas A & M Health Sciences Center, Institute for Regenerative Medicine at Scott & White, Temple, Texas.

<sup>‡</sup>These authors contributed equally to this work.

persisted for up to 30 days and expressed markers for differentiated neurons, astrocytes, and oligodendrocytes. Subpopulations of BrdU-labeled NSCs also expressed potentially beneficial trophic factors, including ciliary neurotrophic factor, neurotrophin-4/5, nerve growth factor, and vascular endothelial growth factor.

Here we examined cocultures of hMSCs and rat NSCs (rNSCs) for potential mechanisms underlying the effects on NSCs seen *in vivo*. Our data suggest that hMSCs stimulated glial differentiation of rNSCs in part through increased secretion of soluble factors such as transforming growth factor  $\beta$  (TGF $\beta$ ) and possibly in part by cell–cell contact-mediated effects, including increased Notch signaling in both the hMSCs and the rNSCs.

## Materials and Methods

### Preparation and culture of hMSCs

hMSCs from normal healthy donors were obtained from the Tulane Center for the Preparation and Distribution of Adult Stem Cells ([www.som.tulane.edu/gene\\_therapy/distribute.shtml](http://www.som.tulane.edu/gene_therapy/distribute.shtml)). The cells were prepared as previously described [15,16] with protocols approved by an Institutional Review Board. Frozen vials of passage-1 hMSCs ( $1 \times 10^6$ ) were thawed, plated in 25 mL complete hMSC medium— $\alpha$ -MEM (Gibco/BRL); 20% FBS (lot selected for rapid growth; Atlanta Biologicals); 100 units/mL penicillin (Gibco/BRL); 100  $\mu$ g/mL streptomycin (Gibco/BRL); and 2 mM L-glutamine (Gibco/BRL)—and incubated at 37°C with 5% humidified CO<sub>2</sub>. After 24 h, the medium was removed and adherent, viable cells were washed twice with PBS, harvested with 0.25% trypsin/1 mM ethylenediaminetetraacetic acid (EDTA), replated at 100 cells/cm<sup>2</sup> in hMSC medium, and incubated with a medium change every 3–4 days. The cells (passage-2) were incubated until they reached 70% confluence (approximately 7 days) at which time they were harvested with trypsin/EDTA for assays or further expansion under the same conditions. For some assays green fluorescent protein (GFP) transduced hMSCs were prepared as previously described [17]. Briefly, hMSCs were transduced by lentiviral GFP construct (WPT-CAG-hrGFP-WPRE). Transduced cells were then purified by fluorescence activated cell sorting (FACS, Vantage SE cell sorter; Becton-Dickinson) before expansion and subsequent freezing. Frozen vials of passage-3 GFP expressing hMSCs were thawed and cultured as outlined above. After thawing and culturing, over 95% of passage-4 hMSCs expressed GFP as determined by FACS analysis (MoFlo XDP Cell Sorter; Beckman Coulter).

### Preparation and culture of rNSCs

Cryopreserved adult rat hippocampal neural stem cells (NSCs) were obtained from Chemicon/Millipore. For cell expansion, frozen vials of approximately  $1 \times 10^6$  rNSCs were rapidly thawed and diluted dropwise with 9 mL optimal rNSC growth medium: 9 parts NeuroCult<sup>®</sup> NS-A Basal Medium (Stemcell Technologies) to 1 part NeuroCult Proliferation Supplements (Stemcell Technologies) with 0.0002% Heparin (Stemcell Technologies); 20 ng/mL recombinant human epidermal growth factor (EGF; Stemcell Technologies); and 10 ng/mL recombinant human basic fibroblast growth factor (FGF-b; Stemcell Technologies). Cells were pelleted,

resuspended at 60,000 cells/mL in 20 mL optimal rNSC growth medium, and grown in a T-175 culture flask (Nunc) at 37°C with 5% humidified CO<sub>2</sub>. Half of the medium was replaced with fresh medium every other day in culture. The nonadherent cells gradually generated neurospheres and were passaged after 4–7 days by gentle pipetting of the neurospheres and medium to dissociate the spheres. Cells and medium were transferred to a collection tube, centrifuged, resuspended in optimal rNSC growth medium at 60,000 cells/mL, and returned to a flask. For the coculture experiments, the cultures were recovered after 2–4 days. To confirm the differentiation potential of the rNSCs, cells were plated at 5,000 cells/cm<sup>2</sup> on glass coverslips precoated with Poly-D-lysine/laminin (BD Biosciences) and incubated in rNSC differentiation medium: 9 parts NeuroCult NS-A Differentiation Medium (Stemcell Technologies) to 1 part NeuroCult Differentiation Supplements (Stemcell Technologies). Cells were fixed for immunostaining after 4–7 days in culture.

### Coculture experiments

Passage-2 hMSCs suspended in complete hMSC medium (20 mL) were plated at 900–2,000 cells/cm<sup>2</sup> on 148-cm<sup>2</sup> culture dishes or glass chamber slides (Sigma-Aldrich) coated with 10  $\mu$ g/mL poly-L-ornithine (Sigma-Aldrich)/5  $\mu$ g/mL laminin (Sigma-Aldrich) or on glass coverslips precoated with Poly-D-lysine/laminin (BD Biosciences). Following 1 day to allow for cell adherence, cultures were washed with PBS and overlaid with rNSCs (5,000 cells/cm<sup>2</sup>) in optimal rNSC growth medium (20 mL for 148-cm<sup>2</sup> dishes or 1 mL per coverslip). Fresh growth factors were added to all of the cultures after 2 days including 20 ng/mL EGF and 10 ng/mL FGF-b. Cultures were grown for 4 days after the addition of the rNSCs. hMSC and rNSC cultures incubated alone were plated in identical conditions. To inhibit TGF $\beta$  signaling in cultures, optimal rNSC growth medium was supplemented with either 4 or 10  $\mu$ M of a TGF $\beta$  receptor type 1 inhibitor (SB431542; Sigma-Aldrich) at the start of the coculture and again after 2 days. To inhibit Notch signaling in cultures, optimal rNSC growth medium was supplemented with 4  $\mu$ M of a  $\gamma$ -secretase inhibitor (DAPT; Sigma-Aldrich). For conditioned medium experiments, rNSCs were plated at 5,000 cells/cm<sup>2</sup> on coated coverslips in optimal rNSC growth medium. After 1 day medium was aspirated from cultures and replaced with hMSC conditioned medium. To prepare hMSC conditioned medium, hMSCs were cultured in optimal rNSC growth medium supplemented with EGF and FGF-b for 4 days. Medium was then collected and centrifuged, fresh EGF and FGF-b were added to the supernatant.

### Immunocytochemistry

After 4 days of incubation, cells on coverslips or in chamber slides were fixed with 4% paraformaldehyde in PBS for 15 min and then washed twice with PBS. Cells were permeabilized with 0.4% Triton X-100 (Sigma-Aldrich) and nonspecific binding was blocked by a 1 h incubation at room temperature in PBS containing 5% normal serum from the species in which the secondary antibody was raised and 0.4% Triton X-100. Slides were subsequently incubated over night at 4°C with the following primary antibodies diluted in blocking buffer: Mouse antinestin (clone 401; BD Bioscience,

cat# 556309; 1:1,000) and rabbit anti-Sox2 (Thermo Scientific, cat# PA1-16968; 1:250) were used to stain neural stem/progenitors; rabbit anti-Ki67 (Novocastra, cat# NSL-Ki67p; 1:8,000) to stain proliferating cells; rabbit anti-gial fibrillary acidic protein (GFAP; Chemicon, cat# AB5804; 1:1,000 or Sigma-Aldrich, cat# G9269; 1:1,000) or mouse anti-GFAP (clone GA-5; Cell Signaling, cat# 3670; 1:500) to stain astrocytes; mouse anti-oligodendrocytes (RIP, clone NSC-1; Chemicon, cat# MAB1580; 1:20,000) and mouse anti-2',3'-cyclic nucleotide 3'-phosphodiesterase (2',3'-cyclic nucleotide 3'-phosphodiesterase [CNPase], clone 11-5B; Sigma-Aldrich, cat# C5922; 1:100) to stain oligodendrocytes; mouse anti- $\beta$ -III tubulin (TUBJ1; Covance, Cat# MMS-435P; 1:1,000) or rabbit anti- $\beta$ -III tubulin (Abcam, cat# AB18207; 1:2,000) to stain neurons; rabbit anti-Jagged 1 (Abcam, cat# Ab7771; 1:200) and goat anti-Notch 1 (R&D Systems, cat# AF1057; 1:100) to stain Notch signaling proteins. After PBS washes, coverslips were incubated with fluorescent dye-conjugated secondary antibodies for 1 h at room temperature. Secondary antibodies used were Alexa-conjugated goat anti-mouse, goat anti-rabbit, donkey anti-goat, or donkey anti-rabbit antibodies (Invitrogen; 1:1,000). After final washes in PBS, coverslips were mounted onto glass slides (Superfrost Plus Microscope Slides; Fisher Scientific) with a mounting medium containing DAPI to label nuclei (Vectashield, Vector Laboratories). Cells were observed with a spinning disk confocal microscope (Olympus BX51-DSU) equipped with a CCD camera (Hamamatsu C9100 EM-CCD; MBF Bioscience) and fluorescent images were acquired using Slidebook 4.2 software (Intelligent Imaging Innovations). Cells were counted in a minimum of 3 frames at either 100 $\times$  or 200 $\times$  magnification to survey at least 200 total cells per condition. A minimum of at least 3 independent cultures were analyzed for each marker counted.

### Western blotting

After 4 days in culture, cells were harvested with trypsin/EDTA, resuspended in PBS, and sorted into GFP<sup>+</sup> or GFP<sup>-</sup> populations (Vantage SE cell sorter; Becton-Dickinson). Cells were lysed using NP40 cell lysis buffer (BioSource/Invitrogen) with protease inhibitors (Roche) and phosphatase inhibitors (eBioscience, San Diego, CA) for 30 min at 4°C with frequent vortexing. The samples were centrifuged at 18,000 *g* for 10 min and the supernatants were aliquoted and assayed for total protein content (DC protein kit; Bio-Rad). One microgram of total protein per lane was electrophoresed on a 4%–12% BisTris NuPage Gel (Invitrogen). Proteins were electrophoretically transferred to a polyvinylidene fluoride (PVDF) membrane (Invitrogen) and then blocked with 5% milk (Bio-Rad) in Tris buffered saline containing 0.1% tween-20 (TBST). Membranes were probed overnight in 2.5% milk in TBST with primary antibodies against GFAP (clone GA-5; Sigma-Aldrich, cat# G3893; 1:500),  $\beta$ -III tubulin (Abcam; cat# AB18207 1:1000), TGF $\beta$  receptor I (Santa Cruz, Cat# SC9048; 1:200), TGF $\beta$  receptor II (Cell Signaling, Cat# 3713; 1:1,000), or  $\beta$ -actin (clone AC-15; Sigma-Aldrich, cat# A1978; 1:40,000). Membranes were washed and incubated for 1 h at room temperature with horseradish peroxidase-conjugated goat anti-mouse or goat anti-rabbit IgG secondary antibodies (Pierce; 1:1,000) diluted in 1% milk TBST solution. Membranes were then washed and exposed to a chemiluminescent substrate (SuperSignal West Femto Substrate; Pierce). Blots were

observed by exposure to X-ray film (Biomax XAR, Fisher). For semiquantitative analysis, the volume (mean intensity  $\times$  mm<sup>2</sup>) of each band was measured using Quantity One software (Bio-Rad). Percent expression was calculated using the following equation: (volume of GFAP/volume of  $\beta$ -actin)  $\times$  100. Three independent cultures were analyzed per condition.

### Microarrays

Seven micrograms of total RNA extracted from cultures of hMSCs alone, rNSCs alone, or cocultures was used for assays on human (HG-U133 Plus 2.0) or rat (RG-230 2.0) arrays (Affymetrix) according to manufacturer's instructions. The scanned signal intensities were transferred to the dChip program for analysis [18,19].

Rat and human microarray data were filtered to identify genes that were either up- or downregulated due to coculture. To correct for cross-hybridization of rat mRNA to the human microarray or human mRNA to the rat microarray, genes were considered upregulated if they were (1) scored P (present) in the coculture data and were at least 2-fold higher (with 90% confidence) than in data from cultures of either cell type alone and (2) scored P in the alone culture of interest data and were at least 2-fold higher than in the opposite alone culture data (Fig. 2). This filtering resulted in 72 rat and 95 human genes (69 rat and 72 human nonredundant genes). Genes were considered downregulated if they were (1) scored P in the alone culture of interest data and were at least 2-fold lower in the coculture data, and were not (2) scored P in the opposite alone culture data and were not at least 2-fold higher than in the alone culture of interest data. This filtering resulted in 75 rat and 7135 human genes (75 rat and 5635 human nonredundant genes).

### Enzyme-linked immunosorbent assays

Medium from 4-day cultures was collected and treated with protease inhibitors (Roche). Human TGF $\beta$ 1 and hepatocyte growth factor (HGF) were assayed using commercial ELISA kits (TGF $\beta$ 1 cat# DB100B and HGF cat# DHG00 Quantikine, R&D Systems) with samples standardized by volume. All samples were assayed in triplicate.

### Real-time reverse transcription-polymerase chain reaction

After 4 days of incubation, cells were sorted by FACS as previously described. Cells were lysed and total RNA was isolated according to manufacturer's instructions (Rneasy Mini Kit, Qiagen). All RNA samples were DNase-treated. Primer sequences for hairy and enhancer of split (*HES1*, NM\_024360.3), hairy and enhancer of split related with YRPW motif 1 (*HEY1*, XM\_342216.3), and  $\beta$ -actin (NM\_031144.2) were designed and synthesized commercially (Superarray Bioscience). Assays with primers for  $\beta$ -actin mRNA were used to normalize samples. First-strand cDNA synthesis and real-time reverse transcription-polymerase chain reaction (RT-PCR) were performed (RT<sup>2</sup> First Strand Synthesis Kit, RT<sup>2</sup> qPCR Primer Assays, Superarray Bioscience). One microgram total RNA was used per sample, and amplification was performed using an automated instrument (Model 7900; Applied Biosystems). For all RT-PCR assays RNA was isolated from 2 independent experiments. Samples were assayed in triplicate.

### Luciferase reporter assay

Notch signaling was monitored using a reporter construct for the recombination signal binding protein for immunoglobulin kappa J region (RBP-Jk) protein (Signal RBP-Jk) Reporter Kit; Superarray Bioscience). rNSCs were transfected with a 40:1 mixture of an inducible reporter construct encoding the firefly luciferase gene under control of the RBP-Jk transcriptional response element (sequence: CGTGGGAA) and a constitutive reporter construct encoding the renilla luciferase gene under control of a minimal (m) cytomegalovirus (CMV) promoter. Approximately  $5 \times 10^5$  rNSCs in a 24-well plate were transfected with 1000 ng of the nucleic acid mixture for 24 h using a transfection reagent (SureFECT; Cignal RBP-Jk Reporter Kit, Superarray Bioscience). At the same time, hMSCs were plated into 96-well cell culture plates at 1,000 cells/cm<sup>2</sup> in hMSC medium for coculture experiments. Following 1 day to allow for cell adherence, the hMSC cultures were washed with PBS and overlaid with 2,000 transfected rNSCs/cm<sup>2</sup> in complete rNSC medium. After 24 h, cells were lysed and assayed for luciferase activity using an automated instrument (FLUOstar OPTIMA; BMG Labtech) and commercial reagents (Dual-luciferase Reporter Assay System; Promega). Renilla luciferase activity was used to normalize RBP-Jk-responsive firefly luciferase activity. For all reporter assays, samples were assayed in triplicate.

### Statistical analysis

Statistical significance was evaluated between 2 groups using Student's *t*-test. RT-PCR and luciferase reporter assay data were compared by 1-way ANOVA with *post hoc* pairwise comparisons using Tukey's test. All error bars represent standard deviations. *P* values <0.05 were considered statistically significant.

## Results

### hMSCs drive the glial differentiation of rat NSCs

In initial experiments, the phenotype of rNSCs cultured in optimal growth medium as a monolayer was established by immunocytochemistry (ICC) (Supplementary Fig. S1, available online at [www.liebertonline.com/scd](http://www.liebertonline.com/scd)). Most cells showed dispersed expression of the immature neural marker nestin and nuclear expression of the characteristic rNSC marker Sox2 (Supplemental Fig. S1C and D, respectively). The cells were actively dividing based on expression of the cell cycle marker Ki-67 and the presence of double nuclei in rare cells (Supplemental Fig. S1E). To confirm the differentiation potential of the rNSC, the cells were incubated in optimal rNSC differentiation medium. Subpopulations of the cells expressed markers for oligodendrocytes (RIP and CNPase), neurons ( $\beta$ -III tubulin), and astrocytes (GFAP) (Supplemental Fig. S1F–K). In parallel experiments, control cultures of hMSCs were incubated in optimal rNSC growth medium. The hMSCs survived in optimal rNSC growth medium and continued to proliferate although at a slower rate than in the hMSC culture medium (not shown). In addition, hMSCs assumed a more-elongated spindle-shaped morphology.

To investigate cellular signaling, rNSCs were cocultured with GFP<sup>+</sup> hMSCs in the optimal rNSC growth medium. After 4 days of coculture, subpopulations of the rNSCs

differentiated into astrocytes, oligodendrocytes, and neurons as indicated by a marked increase in GFP<sup>+</sup> cells expressing GFAP, RIP, and  $\beta$ -III tubulin (Fig. 1A). Astrocytes and a few neurons were widely dispersed in cultures, and positive antibody staining was typically peri-nuclear. Positively stained oligodendrocytes were observed more frequently than the other cell types and were typically seen as clusters of cells in culture. The undifferentiated GFP<sup>+</sup> rNSC typically had characteristic small nuclei and soma, whereas the GFP<sup>+</sup> hMSCs typically demonstrated large, fibroblast-like morphology. The GFAP<sup>+</sup> astrocytes demonstrated thin, multipolar processes extending from the central cell body, the RIP<sup>+</sup> oligodendrocytes large cell bodies with numerous shorter processes, and the  $\beta$ -III tubulin<sup>+</sup> neurons a single far-reaching extension.

To obtain quantitative data, systematic random sampling was performed on cultures. rNSCs incubated alone were  $15.0\% \pm 4.8\%$  (mean  $\pm$  SD) positive for RIP and none were positive for GFAP (Fig. 1B). After coculture with GFP<sup>+</sup> hMSCs, rNSCs were  $52.4\% \pm 5.2\%$  positive for RIP and  $23.6\% \pm 9.9\%$  positive for GFAP. By immunolabeling about 70% of the rNSCs expressed differentiation markers. The results were confirmed in a separate coculture experiment utilizing nontransfected hMSCs harvested from a different bone marrow donor (not shown). Conditioned medium from hMSCs had a different effect: rNSCs incubated with conditioned medium from hMSCs were  $49.2\% \pm 4.8\%$  positive for RIP, but only  $4.8\% \pm 5.5\%$  were positive for GFAP labeling. Therefore, the conditioned medium drove rNSC differentiation toward oligodendrocytes but not toward astrocytes. GFP<sup>+</sup> hMSCs did not express GFAP or RIP under any of the conditions.

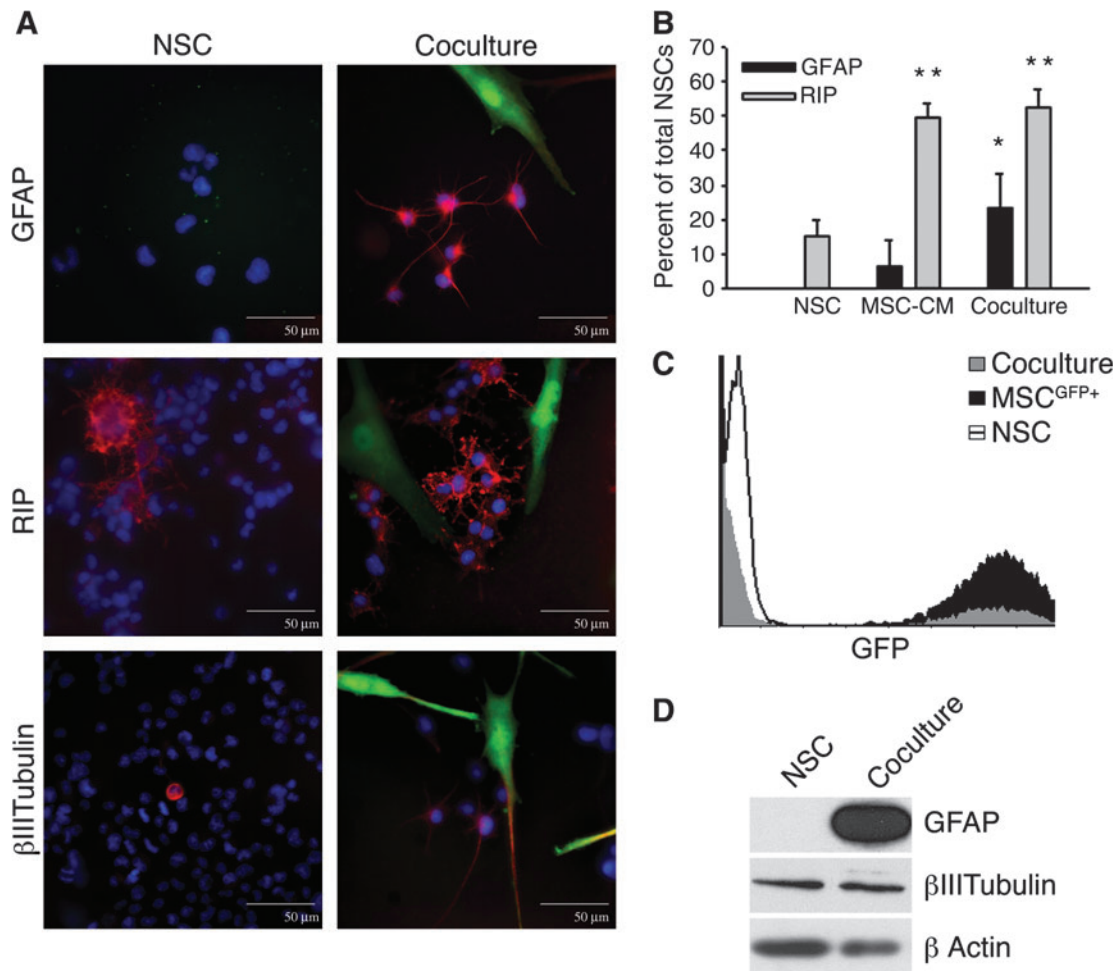
We confirmed the differentiation of the rNSCs by Western blot analysis following cell sorting for discrete GFP<sup>+</sup> and GFP<sup>−</sup> populations after 4 days in coculture (Fig. 1C). The results confirmed marked increases in expression of GFAP in GFP<sup>−</sup> cells isolated from the cocultures (Fig. 1D). No significant change in expression of  $\beta$ -III tubulin was detected.

Our results indicated that hMSCs promoted differentiation of rNSCs specifically along a glial lineage and did not affect neuronal differentiation.

### Effects of hMSCs on the rNSC transcriptome

To survey for signaling pathways involved in rNSC differentiation, RNA extracted from rNSCs incubated alone or from cocultures was assayed with rat microarrays. To correct for human mRNAs that cross-hybridized to the rat microarray, RNA from hMSCs alone was assayed on a rat microarray and used as a control in filtering the data (Fig. 2A).

After filtering, comparison of the signal intensities on the rat microarrays of rNSCs alone and cocultures indicated that 69 nonredundant genes were upregulated in the rNSCs at least 2-fold by coculture with the hMSCs (Supplementary Table S1, available online at [www.liebertonline.com/scd](http://www.liebertonline.com/scd)). A selective screen of the individual 69 upregulated genes revealed numerous genes involved in glial differentiation and development, and Notch signaling pathway (Table 1). Genes implicated in astrocyte and oligodendrocyte development included bone morphogenetic protein 4 (*Bmp4*), meteorin (*Metrn*), reelin (*Reln*), netrin1 (*Ntn1*), chondroitin sulfate proteoglycan 2 (*Cspg2*), and the mammalian Notch ligand Delta-like 1 (*Dll1*).



**FIG. 1.** hMSCs enhanced glial differentiation of rNSCs. rNSCs were cultured alone (NSC), with hMSC-conditioned medium (MSC-CM), or in cocultures with GFP<sup>+</sup> hMSCs (coculture). **(A)** Coculture increased expression in rNSCs of the astrocyte marker GFAP (green in upper left panel; red in upper right) and the oligodendrocyte marker RIP (red) but not the neuron marker β-III tubulin (red). Nuclei were stained with DAPI (blue). The GFAP<sup>+</sup>, RIP<sup>+</sup>, and β-III tubulin<sup>+</sup> cells had the typical morphologies of astrocytes, oligodendrocytes, and neurons, respectively. The GFP<sup>+</sup> cells had the typical morphology of hMSCs. Scale bar = 50 μm. **(B)** MSC-CM increased number of rNSCs expressing RIP, and coculture increased the number expressing either GFAP or RIP (*t*-test: \**P* < 0.05; \*\**P* < 0.01 vs. NSC). **(C)** Histogram of GFP expression used for FACS isolation of GFP<sup>+</sup> hMSCs and GFP<sup>+</sup> rNSCs from cocultures. **(D)** Western blot assay demonstrating that coculture increased expression of GFAP. Expression of β-III tubulin was unchanged. β-actin expression was used as a loading control. hMSC, human mesenchymal stromal cell; rNSC, rat neural stem cell; GFAP, glial fibrillary acidic protein. GFP, green fluorescent protein; RIP, anti-oligodendrocytes antibody.

The characteristic astrocyte phenotype gene *Gfap* was also found to be highly upregulated; however, upregulation was not found to be statistically significant due to high variance between individual perfect match and miss match probes.

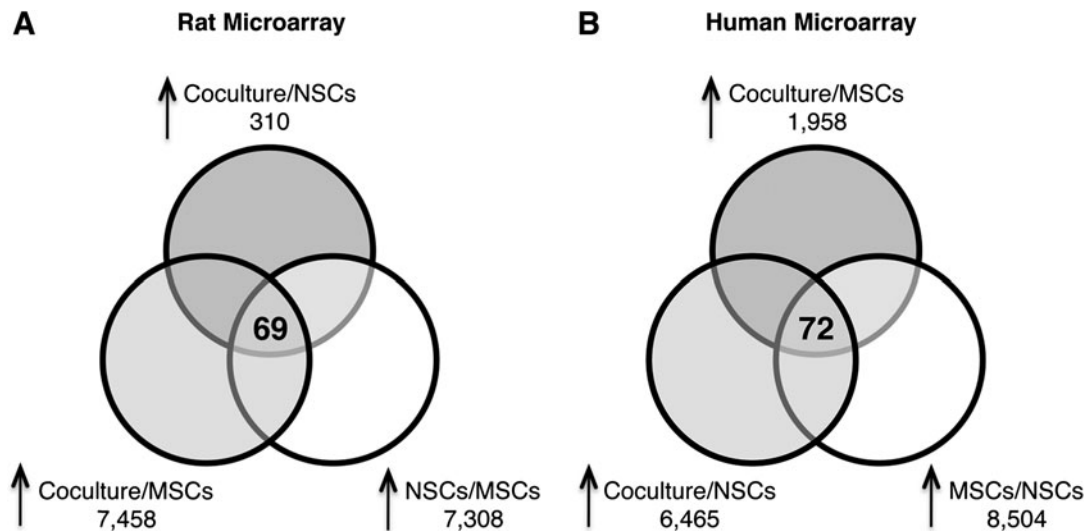
Further comparison of the filtered data indicated that 75 nonredundant genes were downregulated in the rNSCs at least 2-fold by coculture with the hMSCs (Supplementary Table S2, available online at [www.liebertonline.com/scd](http://www.liebertonline.com/scd)). The results indicated that hMSCs produce major cellular and developmental changes in the rNSC transcriptome.

#### Effects of rNSCs on the hMSC transcriptome

To survey changes in the hMSC transcriptome in response to coculture with rNSCs, RNA extracted from hMSCs incubated alone or from cocultures was assayed with human microarrays. To correct for rat mRNAs that cross-hybridized

with the human microarray, RNA from rNSCs alone was assayed on a human microarray and used as a control in filtering the data (Fig. 2B).

After filtering, the data indicated that 72 nonredundant genes were upregulated in the hMSCs at least 2-fold by coculture with the rNSCs (Supplementary Table S3, available online at [www.liebertonline.com/scd](http://www.liebertonline.com/scd)). A selective screen of the individual 72 upregulated genes confirmed numerous genes known to participate in cell signaling via direct cell-cell contact or secreted molecules (Table 1). Upregulated secreted factors included transforming growth factor beta 1 and 3 (*TGFB1* and *TGFB3*) and *HGF*, all mitogens known to modulate NSC proliferation, differentiation, and migration. In addition, several genes implicated in the TGFβ signaling pathway were upregulated, including the TGFβ receptor-regulated Smad family member 3 (*SMAD3*) and the TGFβ regulatory gene *BMP1*. Several genes associated with the



**FIG. 2.** Assays with species-specific microarrays. Total RNA was isolated from individual cultures of hMSCs and rNSCs as well as cocultures. All samples were hybridized to both rat and human microarray chips. **(A)** Venn diagram of 69 nonredundant rat genes upregulated with coculture. **(B)** Venn diagram of 72 nonredundant human genes upregulated with coculture. In both Venn diagrams, lower 2 circles are genes that met the first and second filtering criteria (see Materials and Methods).

Notch signaling pathway were also upregulated. Notch signaling pathway inducers included the mammalian Notch ligand jagged 1 (*JAG1*) and Notch homolog 3 (*NOTCH3*). The Notch downstream target transcription factor hairy and enhancer of split (*HES1*) was also increased.

Further analysis of the filtered data indicated that 5635 genes were downregulated in the hMSCs at least 2-fold by coculture with the rNSCs. This finding may be explained by a high NSC to MSC ratio in the coculture condition diluting the hMSC signal. Therefore, we were unable to make any conclusions regarding rNSC inhibition of the hMSC transcriptome.

#### *Soluble factors secreted by hMSCs in cocultures*

The microarray data allowed us to search for candidate genes that might explain the increased glial differentiation in the cocultures. Among the upregulated genes for secreted factors in the hMSCs were *TGFB1* and *TGFB3* (Table 1). Therefore, the medium from the cocultures was assayed with an ELISA specific for hTGF $\beta$ . As expected, coculture of the hMSCs with the rNSCs increased the secretion of hTGF $\beta$  (Fig. 3, left panel). A role for TGF $\beta$  was further supported by Western blot analysis demonstrating that rNSCs alone as well as those FACS isolated from cocultures expressed the appropriate receptors, TGF $\beta$ R1 and TGF $\beta$ R2 (Fig. 3, right panel). The gene for HGF was also upregulated in the hMSCs, and ELISA demonstrated increased secretion of HGF in the cocultures (Supplementary Fig. S2, available online at [www.liebertonline.com/scd](http://www.liebertonline.com/scd)).

#### *The TGF $\beta$ secreted by hMSCs in cocultures promotes the differentiation the rNSCs*

To confirm that secretion of TGF $\beta$  by hMSCs promoted glial differentiation, cocultures were incubated in the presence of SB431542, a selective inhibitor of TGF $\beta$  signaling. The inhibitor decreased the number of GFAP $^{+}$  astrocytes, and clusters of RIP $^{+}$  oligodendrocytes (Fig. 4A). A few  $\beta$ -III tubulin $^{+}$  neurons were detected, but a majority of rNSCs did

not stain positive for phenotypic markers of differentiated cells. GFP $^{+}$  hMSCs assumed a more-elongated spindle-shaped morphology. rNSCs cocultured with hMSCs were  $52.3\% \pm 4.2\%$  positive for RIP and  $17\% \pm 7.6\%$  positive for GFAP. The TGF $\beta$  inhibitor decreased glial differentiation of the rNSC in cocultures,  $16\% \pm 4.4\%$  were positive for RIP and  $3.3\% \pm 1.5\%$  were positive for GFAP (Fig. 4B).

The effects of the inhibitor were confirmed by Western blot assays demonstrating decreased expression of GFAP in rNSCs isolated from cocultures (Fig. 4B). Recombinant human TGF $\beta$  added to rNSCs cultured alone did not increase the expression of GFAP as detected by Western blots (not shown). There was no change in rNSC expression of  $\beta$ -III tubulin between conditions.

Our results indicated that coculture with rNSCs activates hMSCs to secrete increased amounts of TGF $\beta$  and that TGF $\beta$  signaling is essential for hMSC-stimulated glial differentiation of rNSCs. However, we found that hTGF $\beta$  alone was not sufficient to stimulate glial differentiation of the rNSCs and that additional hMSC-derived factors might be playing a role.

#### *Increased Notch signaling in both the hMSCs and rNSCs*

The microarray data also suggested that coculturing the cells increased Notch signaling in both the rNSCs and in the hMSCs (Table 1). The rNSCs in coculture robustly expressed the receptor Notch 1 (Fig. 5A). hMSCs at sites of contact with rNSCs also expressed the Notch ligand Jagged 1. The results therefore suggest direct cell-cell signaling increased activation of the Notch pathway in both cell types. The Notch signaling pathway has been extensively studied in the developing nervous system, and shown to drive glial differentiation of NSCs by enhancing expression of the transcriptional regulator *Hes1* [20,21]. RT-PCR assays of rNSCs isolated from the cocultures (Fig. 5B) demonstrated that expression of the downstream Notch signaling targets *Hes1* and *Hey1* in rNSCs was increased ( $P < 0.01$ ). In the hMSCs (Fig. 5B), there was

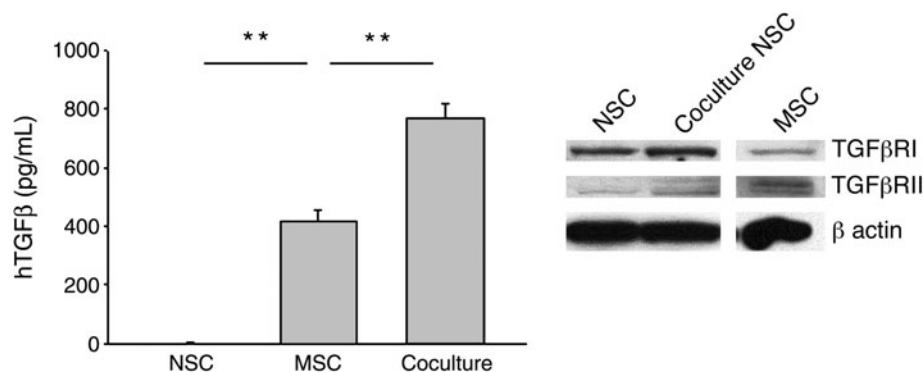
TABLE 1. GENES OF INTEREST UPREGULATED IN COCULTURES

	Symbol	ID	Expression ratio
Rat neural stem cell genes			
Differentiation			
Glial fibrillary acidic protein	<i>Gfap</i>	24387	44.8 <sup>a</sup>
Bone morphogenetic protein 4	<i>Bmp4</i>	25296	2.7
Meteorin	<i>Metrn</i>	287151	2.2
Notch signaling			
Delta-like 1	<i>Dll1</i>	84010	2.5 <sup>b</sup>
Intracellular signaling/transcription factors			
Lymphoid enhancer binding factor 1	<i>Lef1</i>	161452	4.1
Tribbles homolog 1	<i>Trib1</i>	78969	4.0 <sup>b</sup>
Protein tyrosine phosphatase N	<i>Ptpn</i>	116660	3.4
Protein tyrosine phosphatase 5	<i>Ptpn5</i>	29644	2.7 <sup>b</sup>
Protein kinase C eta	<i>Prkch</i>	81749	2.5
Early growth response 1	<i>Egr1</i>	24330	2.3
Signan transducer and activator of transcription 3	<i>Stat3</i>	25125	2.1
Myelin related proteins			
Discoidin domain receptor family 1	<i>Ddr1</i>	25678	2.3
Plasma membrane proteolipid	<i>Pllp</i>	64364	2.2
Gelsolin	<i>Gsn</i>	296654	2.2
Regulators in development			
Reelin	<i>Reln</i>	24718	7.5
Netrin 1	<i>Ntn1</i>	114523	2.6
Chondroitin sulfate proteoglycan 2	<i>Cspg2</i>	114122	2.1
Human mesenchymal stromal cell genes			
Notch signaling			
Hairy and enhancer of split 1	<i>HES1</i>	3280	5.4
Notch homolog 3	<i>NOTCH3</i>	4854	5.0
Jagged 1	<i>JAG1</i>	182	4.2
SMAD family member 3	<i>SMAD3</i>	4088	2.7
Secreted factors			
Bone morphogenetic protein 1	<i>BMP1</i>	649	3.3
Hepatocyte growth factor	<i>HGF</i>	3082	3.2
Transforming growth factor beta 3	<i>TGFB3</i>	7043	3
Transforming growth factor beta 1	<i>TGFB1</i>	7040	2.4
Cell surface receptors			
Thy-1 cell surface antigen	<i>THY1</i>	7070	2.3
KIT ligand	<i>KITLG</i>	4254	2.3
Glypican 1	<i>GPC1</i>	2817	2.3

<sup>a</sup>Using a 90% confidence interval, change in transcript expression was not found to be significant due to high variance between individual perfect match and mismatch probes. Signal absent in NSCs alone.

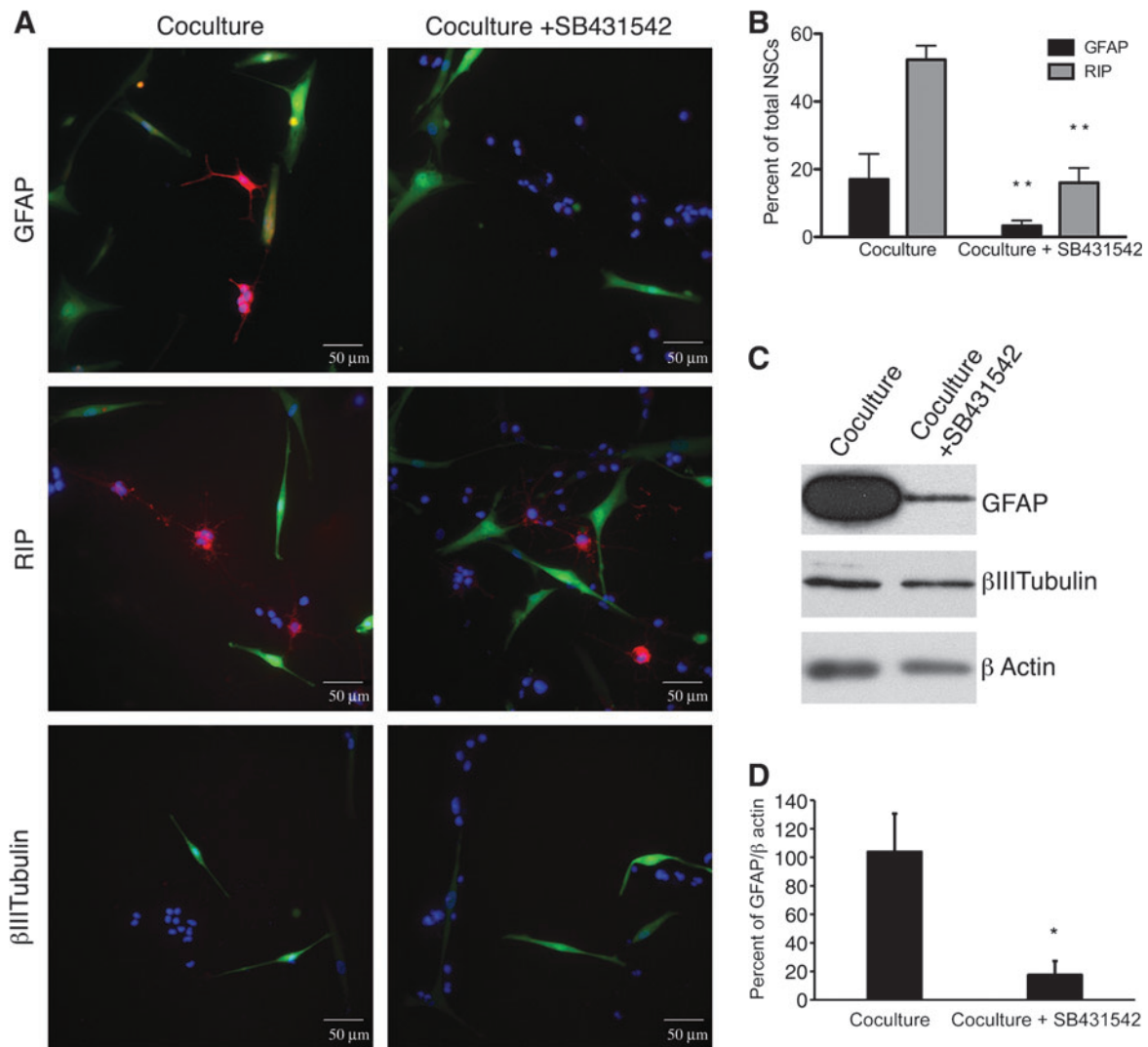
<sup>b</sup>Signal absent in NSCs alone.

NSC, neural stem cell.



**FIG. 3.** hMSCs increased secretion of TGFβ in cocultures. (Left panel) Human-specific ELISA of medium from cultures (*t*-test: \*\**P* < 0.01 vs. MSC). (Right panel) Western blot analysis of rNSCs cultured alone (NSC) or with hMSCs (coculture NSC) and hMSCs cultured alone (MSC) confirmed that hMSCs and rNSCs express both TGFβ receptors I and II. β-actin expression was used as a loading control. TGFβ, transforming growth factor β.





**FIG. 4.** An inhibitor of TGF $\beta$  signaling (SB431542) decreased differentiation of the rNSCs in cocultures. **(A)** Immunocytochemistry for GFAP, RIP, or  $\beta$ -III tubulin (red) expression in rNSCs cocultured with GFP $^{+}$  hMSCs. Nuclei were stained with DAPI (blue). In cocultures with the inhibitor more rNSCs had an immature morphology. Scale bar = 50  $\mu$ m. **(B)** Treatment of cocultures with SB431542 decreased rNSC expression of GFAP and RIP ( $t$ -test:  $**P < 0.01$  vs. coculture). **(C)** Western blots demonstrating that the inhibitor decreased expression of GFAP in rNSCs isolated from cocultures by FACS. **(D)** Semiquantitative analysis of rNSC expression of GFAP by Western blots ( $t$ -test:  $*P < 0.05$  vs. coculture).

increased expression of *HES1* but not the coregulatory factor *HEY1* ( $P < 0.01$ ). Expression of *HES1* in the hMSCs was confirmed by Western blot analysis; however, there was no detectable change in protein level between hMSCs cultured alone and those from coculture (not shown).

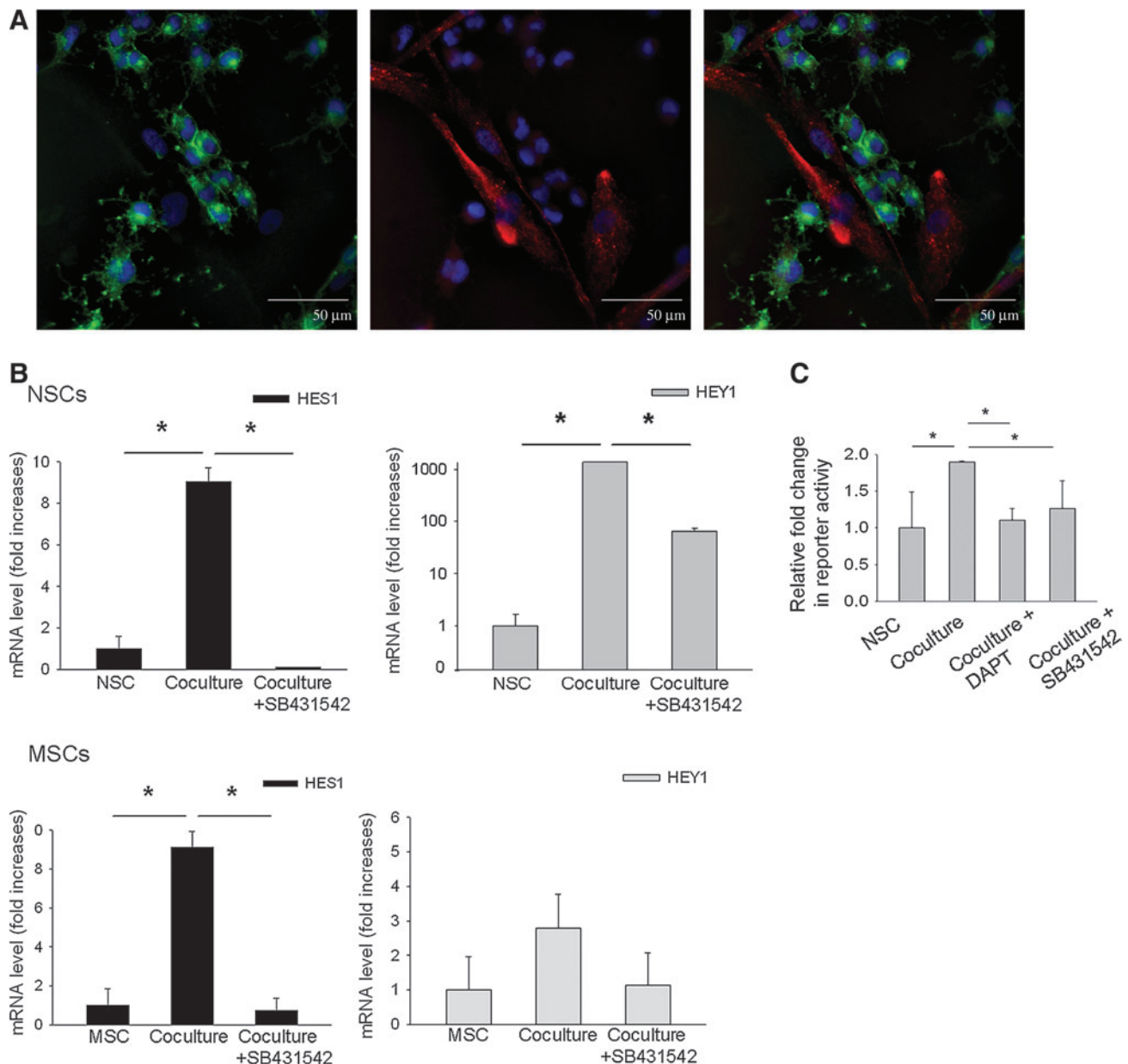
Because of reported synergy between the Notch and TGF $\beta$  pathways [22], we repeated the experiments in the presence of the inhibitor of the TGF $\beta$  pathway. As expected, incubation with the inhibitor decreased expression of both *Hes1* and *Hey1* in the rNSCs (Fig. 5B). It also decreased expression of *HES1* in the hMSCs.

#### Notch signaling in the rNSCs assayed with reporter genes

To further confirm the Notch signaling, we transfected the rNSCs with 2 reporter constructs: 1 to assay for the Notch

pathway and 1 to control for the efficiency of the transfections. The reporter construct for the pathway contained the luciferase gene under the control of an RBP-Jk response element. Upon activation, the intracellular domain of the Notch receptor (NICD) is cleaved and translocates to the nucleus. The NICD binds to RBP-Jk and thereby converts it from a repressor of transcription to an activator. Coculture with hMSCs significantly increased intracellular Notch signaling in the rNSCs (Fig. 5C). The Notch signaling was reduced by addition of DAPT, a gamma secretase inhibitor that inhibits the cleavage of NICD from the Notch extracellular domain. Also Notch signaling was reduced by addition of the TGF $\beta$  inhibitor.

The results indicated that glial differentiation in the cocultures was driven by activation of the TGF $\beta$  signaling pathway, possibly through synergistic activity with the Notch signaling pathway (Fig. 6).



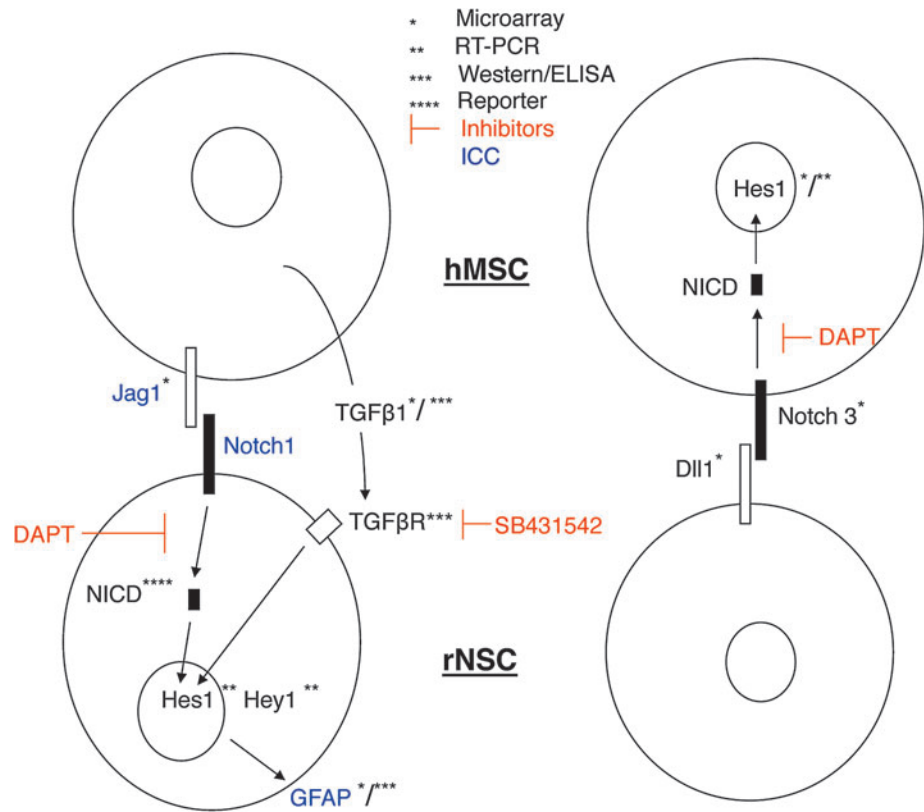
**FIG. 5.** Notch signaling was increased in the cocultures and decreased by an inhibitor of TGF $\beta$  signaling. **(A)** rNSCs in coculture expressed Notch 1 (green). Also, hMSCs contacting rNSCs expressed the Notch ligand Jagged 1 (red). Nuclei were stained with DAPI (blue). Scale bar = 50  $\mu$ m. **(B)** Real-time reverse transcription-polymerase chain reaction assays for the Notch downstream targets *HES1* and *HEY1*. In coculture, expression of both *HES1* and *HEY1* was increased in rNSCs and that of *HES1* was increased in hMSCs. An inhibitor of TGF $\beta$  signaling (SB431542) decreased expression of *HES1* and *HEY1* in the rNSCs and *HES1* in the hMSCs (*t*-test:  $*P < 0.01$  vs. coculture). **(C)** Notch intracellular signaling in the rNSCs was assayed using an inducible reporter construct for the recombination signal binding protein for immunoglobulin kappa J region (RBP-Jk) protein, a downstream modulator of Notch signaling. Coculture significantly increased intracellular Notch signaling. Both the TGF $\beta$  inhibitor (SB431542) and the  $\gamma$ -secretase inhibitor (DAPT) decreased Notch signaling [1-way ANOVA,  $F(3,8) = 8.41$ ,  $*P < 0.05$  vs. coculture].

## Discussion

Therapeutic benefits from administration of MSCs have been reported in a series of models of diseases of the CNS, but the mode of action of the cells has not been defined [8,23,24]. Since the cells differentiated into neural-like cells under some conditions, it was initially assumed that the

therapeutic benefits were produced primarily by engraftment and differentiation of the MSCs to neural cells [25,26]. Subsequent observations suggested that therapeutic benefits were frequently obtained with only transitory engraftment and little evidence of differentiation of the cells [8,27–29]. Therefore, the cells apparently exerted their effects indirectly by secretion of soluble factors or cell-to-cell contact that

**FIG. 6.** Schematic of cell signaling between rNSCs and hMSCs in coculture. Data obtained from multiple assays indicate activation of the classical Notch signaling pathway in both the hMSCs and rNSCs. Notch signaling is thought to be unidirectional; therefore, the data suggest that Notch signaling is directed from hMSCs to rNSCs in some sub-populations of the cocultures and from rNSCs to hMSCs in other sub-populations.



modulated inflammatory and immune reactions [30,31], or by suppressing apoptosis [32,33].

Coculture experiments were used here to explore the recent observations [12,13] that hMSCs infused into the hippocampus-stimulated proliferation, migration, and differentiation of endogenous NSCs. To study the effects of hMSCs on a proliferative population of NSCs we chose to coculture the cells in growth medium as apposed to differentiation induction medium. The presence of hMSCs in the cocultures markedly stimulated differentiation of rNSCs to astrocytes and oligodendrocytes in the optimal NSC growth medium that did not in itself induce differentiation. The use of species-specific microarrays to assay RNA extracted from the cocultures made it possible to survey changes in the transcriptomes of both cell types. To validate the microarray findings a variety of techniques were used to assay both the rNSCs and hMSCs (see summary in Fig. 6).

The role of TGFβ1 was verified by the demonstration that hMSCs in coculture increased secretion of TGFβ1, the rNSCs expressed the receptors, and an inhibitor of the pathway decreased differentiation (Fig. 6). A role for HGF was in part verified by the observation that hMSCs in coculture increased secretion of HGF (Supplemental Fig. S1). The role of Notch signaling was verified by the demonstration that in the cocultures hMSCs expressed a Notch ligand at sites of cell contact with rNSCs, and the rNSCs expressed the Notch receptor. Increased Notch signaling in both cell types was then demonstrated by assays of transcripts for a downstream target for Notch (*Hes1*) in both cells and a reporter construct for downstream targets of Notch signaling in rNSCs.

The observation that Notch signaling was increased in both the rNSCs and the hMSCs was surprising since Notch is generally recognized as a unidirectional signaling system [34–37]. Therefore, the results suggest that the Notch signaling was directed in opposite directions in different sub-populations of the cocultures (Fig. 6).

A role for TGFβ1 in glial differentiation is consistent with its being a member of a superfamily of growth factors known to produce a diverse range of biological effects in the developing CNS, including NSC expansion and fate determination [38–40]. Its role is also consistent with the observation that conditioned medium from hMSCs increased oligodendrogenesis by rNSCs incubated in medium containing 10% FBS [41,42]. hMSCs also increase both oligodendrogenesis and neurogenesis by mouse neurospheres incubated in serum-free medium [43]. In the optimal NSC growth medium used here, conditioned medium from hMSCs increased differentiation to oligodendrocytes but not astrocytes. The different fates of the rNSCs are probably due to differences in the hMSC and rNSC preparations, and differences in the culture conditions.

The role of Notch signaling in glial differentiation is consistent with its extensive role in controlling cell fate in many different systems [34,37] and its role in the development of the CNS [44]. Notch signaling provides a mechanism to limit specific cell fates to single cells within a cluster of cells, but it can also restrict cells to an uncommitted fate [34–37]. The Notch signaling pathway has extensive interconnectedness with other signaling pathways [37]. For example, TGFβ can directly induce *Hes1* or it can activate the Smad2/3 complex which interacts with NICD to recruit RBP-Jκ and thereby

induce Hes1 [22]. The results here suggest the possibility that Notch and TGF $\beta$  signaling were acting synergically in the rNSCs. This is supported by the observation that an inhibitor of TGF $\beta$  signaling inhibited both glial differentiation and increased expression of down stream targets of Notch signaling (*HES1* and *HEY1*) in the rNSCs. It is likely that HGF and other factors that hMSCs were activated to secrete in the cocultures had roles in enhancing differentiation.

As we previously showed that hMSCs survive for short periods of time in the CNS [12,31], stimulation of the endogenous cycling cell population rather than cell replacement may be a more viable means to approach long-term cell therapy for treatment of neurologic insults. Glial cells are gaining appreciation for their ability to support the local environment structurally and functionally. Although long associated with the formation of a detrimental glial scar following neural injury, astrocytes are now being recognized as providing beneficial activities such as restricting inflammation and protecting neurons and oligodendrocytes [45,46]. Growth factor support supplied by astrocytes has been shown to increase neuronal survival, maturation, and function [47,48]. Stimulation of oligodendrocyte survival and function has long been a primary aim for effective treatment of demyelinating diseases and insults. The hMSC-stimulated increase in oligodendrocyte numbers and their maturation has been suggested to underlie remyelination and functional recovery following a demyelinating insult [49]. In addition, oligodendrocytes are now known to produce a number of trophic factors that can support neuronal survival and function [50,51]. Because MSCs are readily accessible and expanded *in vitro*, they may serve as an effective means to stimulate glial differentiation of the endogenous NSC population and thus enhance endogenous repair mechanisms following neurologic insult.

## Acknowledgments

The work was supported in part by an NIH grant (P40 RR 17447), the Louisiana Gene Therapy Research Foundation, and a fellowship from the Louisiana Board of Regents Support Fund.

## Author Disclosure Statement

No competing financial interests exist.

## References

- Zhao C, W Deng and FH Gage. (2008). Mechanisms and functional implications of adult neurogenesis. *Cell* 132:645–660.
- Gage FH. (2000). Mammalian neural stem cells. *Science* 287:1433–1438.
- Arvidsson A, T Collin, D Kirik, Z Kokaia and O Lindvall. (2002). Neuronal replacement from endogenous precursors in the adult brain after stroke. *Nat Med* 8:963–970.
- Einstein O and T Ben Hur. (2008). The changing face of neural stem cell therapy in neurologic diseases. *Arch Neurol* 65:452–456.
- Qu C, A Mahmood, D Lu, A Goussev, Y Xiong and M Chopp. (2008). Treatment of traumatic brain injury in mice with marrow stromal cells. *Brain Res* 1208:234–239.
- Hofstetter CP, EJ Schwarz, D Hess, J Widenfalk, A El Manira, DJ Prockop and L Olson. (2002). Marrow stromal cells form guiding strands in the injured spinal cord and promote recovery. *Proc Natl Acad Sci USA* 99:2199–2204.
- Li Y, J Chen, L Wang, L Zhang, M Lu and M Chopp. (2001). Intracerebral transplantation of bone marrow stromal cells in a 1-methyl-4-phenyl-1,2,3,6-tetrahydropyridine mouse model of Parkinson's disease. *Neurosci Lett* 316:67–70.
- Parr AM, CH Tator and A Keating. (2007). Bone marrow-derived mesenchymal stromal cells for the repair of central nervous system injury. *Bone Marrow Transplant* 40: 609–619.
- Ukai R, O Honmou, K Harada, K Houkin, H Hamada and JD Kocsis. (2007). Mesenchymal stem cells derived from peripheral blood protects against ischemia. *J Neurotrauma* 24:508–520.
- Zietlow R, EL Lane, SB Dunnett and AE Rosser. (2008). Human stem cells for CNS repair. *Cell Tissue Res* 331: 301–322.
- Haynesworth SE, MA Baber and AI Caplan. (1996). Cytokine expression by human marrow-derived mesenchymal progenitor cells *in vitro*: effects of dexamethasone and IL-1 alpha. *J Cell Physiol* 166:585–592.
- Munoz JR, BR Stoutenger, AP Robinson, JL Spees and DJ Prockop. (2005). Human stem/progenitor cells from bone marrow promote neurogenesis of endogenous neural stem cells in the hippocampus of mice. *Proc Natl Acad Sci USA* 102:18171–18176.
- Yoo SW, SS Kim, SY Lee, HS Lee, HS Kim, YD Lee and H Suh-Kim. (2008). Mesenchymal stem cells promote proliferation of endogenous neural stem cells and survival of newborn cells in a rat stroke model. *Exp Mol Med* 40: 387–397.
- Esneault E, E Pacary, D Eddi, T Freret, E Tixier, J Toutain, O Touzani, P Schumann-Bard, E Petit, S Roussel and M Bernaudin. (2008). Combined therapeutic strategy using erythropoietin and mesenchymal stem cells potentiates neurogenesis after transient focal cerebral ischemia in rats. *J Cereb Blood Flow Metab* 28:1552–1563.
- Sekiya I, BL Larson, JR Smith, R Pochampally, JG Cui and DJ Prockop. (2002). Expansion of human adult stem cells from bone marrow stroma: conditions that maximize the yields of early progenitors and evaluate their quality. *Stem Cells* 20:530–541.
- Colter DC, R Class, CM DiGirolamo and DJ Prockop. (2000). Rapid expansion of recycling stem cells in cultures of plastic-adherent cells from human bone marrow. *Proc Natl Acad Sci USA* 97:3213–3218.
- Spees JL, SD Olson, MJ Whitney and DJ Prockop. (2006). Mitochondrial transfer between cells can rescue aerobic respiration. *Proc Natl Acad Sci USA* 103:1283–1288.
- Zhong S, C Li and WH Wong. (2003). ChipInfo: Software for extracting gene annotation and gene ontology information for microarray analysis. *Nucleic Acids Res* 31:3483–3486.
- Li C and WH Wong. (2001). Model-based analysis of oligonucleotide arrays: expression index computation and outlier detection. *Proc Natl Acad Sci USA* 98:31–36.
- Ge W, K Martinowich, X Wu, F He, A Miyamoto, G Fan, G Weinmaster and YE Sun. (2002). Notch signaling promotes astroglialogenesis via direct CSL-mediated glial gene activation. *J Neurosci Res* 69:848–860.
- Gaiano N and G Fishell. (2002). The role of notch in promoting glial and neural stem cell fates. *Annu Rev Neurosci* 25:471–490.
- Blokzijl A, C Dahlqvist, E Reissmann, A Falk, A Moliner, U Lendahl and CF Ibanez. (2003). Cross-talk between the Notch and TGF-beta signaling pathways mediated by

- interaction of the Notch intracellular domain with Smad3. *J Cell Biol* 163:723–728.
23. Dezawa M. (2008). Systematic neuronal and muscle induction systems in bone marrow stromal cells: the potential for tissue reconstruction in neurodegenerative and muscle degenerative diseases. *Med Mol Morphol* 41:14–19.
  24. Chopp M, Y Li and J Zhang. (2008). Plasticity and remodeling of brain. *J Neurol Sci* 265:97–101.
  25. Kopen GC, DJ Prockop and DG Phinney. (1999). Marrow stromal cells migrate throughout forebrain and cerebellum, and they differentiate into astrocytes after injection into neonatal mouse brains. *Proc Natl Acad Sci USA* 96:10711–10716.
  26. Hermann A, M Maisel and A Storch. (2006). Epigenetic conversion of human adult bone mesodermal stromal cells into neuroectodermal cell types for replacement therapy of neurodegenerative disorders. *Expert Opin Biol Ther* 6: 653–670.
  27. Prockop DJ. (2007). “Stemness” does not explain the repair of many tissues by mesenchymal stem/multipotent stromal cells (MSCs). *Clin Pharmacol Ther* 82:241–243.
  28. Phinney DG and DJ Prockop. (2007). Concise review: mesenchymal stem/multipotent stromal cells: the state of trans-differentiation and modes of tissue repair—current views. *Stem Cells* 25:2896–2902.
  29. Caplan AI and JE Dennis. (2006). Mesenchymal stem cells as trophic mediators. *J Cell Biochem* 98:1076–1084.
  30. Uccelli A, L Moretta and V Pistoia. (2008). Mesenchymal stem cells in health and disease. *Nat Rev Immunol* 8:726–736.
  31. Ohtaki H, JH Ylostalo, JE Foraker, AP Robinson, RL Reger, S Shioda and DJ Prockop. (2008). Stem/progenitor cells from bone marrow decrease neuronal death in global ischemia by modulation of inflammatory/immune responses. *Proc Natl Acad Sci USA* 105:14638–14643.
  32. Zhang Z, A Deb, A Pachori, W He, J Guo, R Pratt and VJ Dzau. (2008). Secreted frizzled related protein 2 protects cells from apoptosis by blocking the effect of canonical Wnt3a. *J Mol Cell Cardiol* 46: 370–377.
  33. Block GJ, S Ohkouchi, F Fung, J Frenkel, C Gregory, R Pochampally, G Dimattia, DE Sullivan and DJ Prockop. (2008). Multipotent stromal cells (MSCs) are activated to reduce apoptosis in part by upregulation and secretion of stanniocalcin-1 (STC-1). *Stem Cells* [Epub ahead of print]. DOI: 10.1634/stemcells.2008-0742.
  34. Blanpain C, V Horsley and E Fuchs. (2007). Epithelial stem cells: turning over new leaves. *Cell* 128:445–458.
  35. Artavanis-Tsakonas S, MD Rand and RJ Lake. (1999). Notch signaling: cell fate control and signal integration in development. *Science* 284:770–776.
  36. Amsen D, A Antov and RA Flavell. (2009). The different faces of Notch in T-helper-cell differentiation. *Nat Rev Immunol* 9:116–124.
  37. Hurlbut GD, MW Kankel and S Artavanis-Tsakonas. (2009). Nodal points and complexity of Notch-Ras signal integration. *Proc Natl Acad Sci USA* 106:2218–2223.
  38. Kitisin K, T Saha, T Blake, N Golestaneh, M Deng, C Kim, Y Tang, K Shetty, B Mishra and L Mishra. (2007). Tgf-Beta signaling in development. *Sci STKE* 2007:cm1.
  39. Golestaneh N and B Mishra. (2005). TGF-beta, neuronal stem cells and glioblastoma. *Oncogene* 24:5722–5730.
  40. Aigner L and U Bogdahn. (2008). TGF-beta in neural stem cells and in tumors of the central nervous system. *Cell Tissue Res* 331:225–241.
  41. Rivera FJ, M Kandasamy, S Couillard-Despres, M Caioni, R Sanchez, C Huber, N Weidner, U Bogdahn and L Aigner. (2008). Oligodendrogenesis of adult neural progenitors: differential effects of ciliary neurotrophic factor and mesenchymal stem cell derived factors. *J Neurochem* 107: 832–843.
  42. Rivera FJ, S Couillard-Despres, X Pedre, S Ploetz, M Caioni, C Lois, U Bogdahn and L Aigner. (2006). Mesenchymal stem cells instruct oligodendrogenic fate decision on adult neural stem cells. *Stem Cells* 24:2209–2219.
  43. Bai L, A Caplan, D Lennon and RH Miller. (2007). Human mesenchymal stem cells signals regulate neural stem cell fate. *Neurochem Res* 32:353–362.
  44. Yoon K and N Gaiano. (2005). Notch signaling in the mammalian central nervous system: insights from mouse mutants. *Nat Neurosci* 8:709–715.
  45. Faulkner JR, JE Herrmann, MJ Woo, KE Tansey, NB Doan and MV Sofroniew. (2004). Reactive astrocytes protect tissue and preserve function after spinal cord injury. *J Neurosci* 24:2143–2155.
  46. Bush TG, N Puvanachandra, CH Horner, A Polito, T Ostenfeld, CN Svendsen, L Mucke, MH Johnson and MV Sofroniew. (1999). Leukocyte infiltration, neuronal degeneration, and neurite outgrowth after ablation of scar-forming, reactive astrocytes in adult transgenic mice. *Neuron* 23:297–308.
  47. O'Malley EK, IB Black and CF Dreyfus. (1991). Local support cells promote survival of substantia nigra dopaminergic neurons in culture. *Exp Neurol* 112:40–48.
  48. Muller HW and W Seifert. (1982). A neurotrophic factor (NTF) released from primary glial cultures supports survival and fiber outgrowth of cultured hippocampal neurons. *J Neurosci Res* 8:195–204.
  49. Akiyama Y, C Radtke, O Honmou and JD Kocsis. (2002). Remyelination of the spinal cord following intravenous delivery of bone marrow cells. *Glia* 39:229–236.
  50. Wilkins A, S Chandran and A Compston. (2001). A role for oligodendrocyte-derived IGF-1 in trophic support of cortical neurons. *Glia* 36:48–57.
  51. Dai X, LD Lercher, PM Clinton, Y Du, DL Livingston, C Vieira, L Yang, MM Shen and CF Dreyfus. (2003). The trophic role of oligodendrocytes in the basal forebrain. *J Neurosci* 23:5846–5853.

Address correspondence to:

Dr. Darwin J. Prockop

Texas A & M Health Sciences Center

Institute for Regenerative Medicine at Scott & White

5701 Airport Road, Module C

Temple, TX 76502-6954

E-mail: prockop@medicine.tamhsc.edu

Received for publication November 9, 2009

Accepted after revision June 23, 2010

Prepublished on Liebert Instant Online June 24, 2010