

## *Experimental Biology and Medicine*

### **Streptozotocin–nicotinamide-induced diabetes in the rat. Characteristics of the experimental model**

Tomasz Szkudelski

*Experimental Biology and Medicine* 2012, 237:481-490.  
doi: 10.1258/ebm.2012.011372 originally published online May 22, 2012

Updated information and services can be found at:  
<http://ebm.rsmjournals.com/content/237/5/481>

This article cites 103 articles, 16 of which can be accessed free at:  
<http://ebm.rsmjournals.com/content/237/5/481#BIBL>



© 2008 Society for Experimental Biology and Medicine

## Streptozotocin–nicotinamide-induced diabetes in the rat. Characteristics of the experimental model

Tomasz Szkudelski

Department of Animal Physiology and Biochemistry, Poznan University of Life Sciences, Wolynska 35, 60-637 Poznan, Poland  
Email: tszkudel@jay.up.poznan.pl

### Abstract

Administration of both streptozotocin (STZ) and nicotinamide (NA) has been proposed to induce experimental diabetes in the rat. STZ is well known to cause pancreatic B-cell damage, whereas NA is administered to rats to partially protect insulin-secreting cells against STZ. STZ is transported into B-cells via the glucose transporter GLUT2 and causes DNA damage leading to increased activity of poly(ADP-ribose) polymerase (PARP-1) to repair DNA. However, exaggerated activity of this enzyme results in depletion of intracellular NAD<sup>+</sup> and ATP, and the insulin-secreting cells undergo necrosis. The protective action of NA is due to the inhibition of PARP-1 activity. NA inhibits this enzyme, preventing depletion of NAD<sup>+</sup> and ATP in cells exposed to STZ. Moreover, NA serves as a precursor of NAD<sup>+</sup> and thereby additionally increases intracellular NAD<sup>+</sup> levels. The severity of diabetes in experimental rats strongly depends on the doses of STZ and NA given to these animals. Therefore, in diabetic rats, blood glucose may be changed in a broad range – from slight hyperglycemia to substantial hyperglycemia compared with control animals. Similarly, blood insulin may be only slightly decreased or substantial hypoinsulinemia may be induced. *In vitro* studies demonstrated that the insulin-secretory response to glucose is attenuated in STZ–NA-induced diabetic rats compared with control animals. This is due to reduced B-cell mass as well as metabolic defects in the insulin-secreting cells. Results of numerous experiments have demonstrated that this model of diabetes is useful in studies of different aspects of diabetes.

**Keywords:** rat, diabetes, streptozotocin, nicotinamide

*Experimental Biology and Medicine* 2012; **237**: 481–490. DOI: 10.1258/ebm.2012.011372

### Introduction

Diabetes mellitus is a complex metabolic disease affecting about 5% of people all over the world. According to the classification proposed by the American Diabetes Association, diabetes is divided into different types.<sup>1</sup> Type 1 diabetes accounts for 5–10% of all diabetic cases and results from the autoimmune destruction of the pancreatic B-cells. This type of diabetes usually develops rapidly because of the grave destruction of the insulin-secreting cells and patients are dependent on exogenous insulin. Type 2 diabetes is more frequent, accounts for 90–95% of all diabetic cases, is characterized by insulin resistance and relative insulin deficiency, and is frequently accompanied by overweight or obesity. Hyperglycemia usually develops slowly, and at earlier stages, blood glucose is moderately elevated. In type 2 diabetes, insulin resistance is initially compensated by increased secretion of insulin; however, this prolonged overstimulation of insulin secretion leads over time to progressive exhaustion and degradation of B-cells.<sup>2,3</sup> In individuals with type 2 diabetes, numerous abnormalities in these cells have been described. In

humans with type 2 diabetes, glucose-stimulated insulin secretion is substantially impaired. However, insulin-secretory response to amino acids or sulphonylureas is usually less affected. Moreover, the first phase of insulin secretion and the pulsatility of hormone release have also been demonstrated to be disturbed in type 2 diabetic patients.<sup>4,5</sup> The insulin-secretory abnormalities of B-cells are accompanied, among others, by decreased oxidation of glucose and by a lower ATP/ADP ratio. Moreover, decreased expression of insulin, glucose transporters and glucokinase have been found in pancreatic islets of humans with type 2 diabetes. It is also known that oxidative stress in pancreatic islets of type 2 diabetic humans and apoptosis of islet cells are increased compared with healthy individuals.<sup>5–7</sup> However, abnormalities in diabetes are still poorly elucidated.

New drugs are continually being tested and new strategies developed to prevent and treat diabetes. In these studies, different experimental animal models of diabetes have been used. One of them is streptozotocin (STZ)–nicotinamide (NA)-induced diabetes in the rat. In this model,

created by Masiello *et al.*,<sup>8</sup> diabetes is induced by administration of two compounds – STZ and NA. STZ is a well-known diabetogenic agent exerting cytotoxic action on pancreatic B-cells, whereas NA is given to rats to partially protect these cells against STZ. The present article focuses on the mechanisms of action of STZ and NA on B-cells and characterizes the experimental model of diabetes induced by administration of these two compounds. The information included in this study will be helpful not only in understanding the action of STZ and NA at the cellular level, but also in inducing experimental diabetes in the rat.

## Cytotoxic action of STZ

STZ (2-deoxy-2(3-methyl-3-nitrosoureido)-D-glucopyranose; Figure 1) is a nitrosourea analogue widely used to induce experimental diabetes in animals. The precise mechanism of STZ action in B-cells of the pancreas has been described previously in review articles.<sup>9,10</sup> The potent diabetogenic action of STZ results from injury of the pancreatic B-cells, which are the only source of insulin. STZ is relatively selective in relation to these cells. The glucose moiety enables STZ to be transported into insulin-secreting cells via the glucose transporter GLUT2,<sup>11,12</sup> whereas the nitrosoamide moiety of STZ (methylnitrosourea) is responsible for the toxicity of this compound.<sup>13</sup> It is well documented that exposure of the insulin-secreting cells to STZ results in DNA damage.<sup>13–15</sup> Numerous *in vitro* studies have revealed that STZ causes DNA alkylation resulting in fragmentation of DNA in B-cells and insulinoma cells (RINm5F).<sup>12,16–22</sup> As a result of DNA injury, intracellular mechanisms targeted toward DNA repair are activated. In the case of STZ-induced DNA damage in the insulin-secreting cells, the crucial role in DNA repair is ascribed to poly(ADP-ribose) polymerase-1 (PARP-1). This nuclear enzyme catalyses the synthesis of poly(ADP-ribose) from NAD<sup>+</sup>.<sup>23–25</sup> The intracellular production of poly(ADP-ribose) is known to be increased by different factors generating strand interruptions in DNA.<sup>26</sup> DNA injury brought about by STZ has been demonstrated to induce overstimulation of PARP-1 in the insulin-secreting cells.<sup>21,27,28</sup> In the case of a mild DNA damage, the activation of PARP-1 is beneficial.<sup>29</sup> However, extensive DNA injury induced by STZ leads to hyperactivity of PARP-1 and is detrimental to the cell as a result of a substantial depletion of the intracellular PARP-1 substrate, NAD<sup>+</sup>. Several studies have indeed demonstrated that NAD<sup>+</sup> content in islet cells

exposed to STZ is significantly diminished.<sup>30–34</sup> NAD<sup>+</sup> is an important molecule implicated in energy metabolism at the cellular level. Moreover, a severe reduction of NAD<sup>+</sup> leads to depletion of ATP since NAD<sup>+</sup> biosynthesis is ATP-dependent.<sup>35</sup> *In vitro* studies confirmed a substantial decrease in ATP contents in B-cells exposed to STZ.<sup>34,36,37</sup> However, this ATP depletion seems to result not only from increased activity of PARP-1, but also from STZ-induced mitochondrial dysfunction. It is known that short-term exposure to STZ decreases islet mitochondrial aconitase activity, reduces oxygen consumption by mitochondria and decreases the mitochondrial membrane potential.<sup>34,38,39</sup> Moreover, studies on insulinoma cells have revealed STZ-induced mitochondrial Ca<sup>2+</sup> overloading.<sup>22</sup> Some data also indicate that nitric oxide may play a role in the cytotoxic action of STZ on insulin-secreting cells.<sup>28,38,40,41</sup> This assumption is supported by results demonstrating that scavengers of nitric oxide (NO) attenuate early DNA-strand breaks induced by STZ.<sup>41</sup> Moreover, exposure of rat pancreatic islets to STZ augments the activity of guanylyl cyclase and increases islet cyclic guanosine monophosphate.<sup>38</sup> It is also known that STZ generates low amounts of reactive oxygen species in pancreatic B-cells.<sup>42</sup> These effects may partially contribute to B-cell damage induced by STZ because of a weak antioxidant defense in these cells.<sup>43</sup>

Mokhtari *et al.*<sup>44</sup> and Cheon *et al.*<sup>45</sup> revealed that c-Jun N-terminal kinase (JNK) is also involved in the cytotoxicity of STZ. Increased activity of this enzyme is observed in the case of cellular stress leading to cell death. Studies on insulin-secreting cells exposed to STZ demonstrated increased activity of JNK, whereas inhibitors of this enzyme attenuated the cytotoxic action of STZ. Activation of JNK by STZ is supposed to be preceded by increased activity of PARP-1 since PARP-1 inhibitors are able to decrease the activity of both PARP-1 and JNK.<sup>45</sup>

## Protective action of NA

NA (pyridine-3-carboxamide; Figure 1) is the amide form of vitamin B<sub>3</sub> (niacin). The protective action of NA against cellular damage induced by different harmful agents is well established.<sup>46–48</sup> Results of many *in vitro* and *in vivo* studies have provided evidence that NA is also able to effectively protect B-cells against the cytotoxicity of STZ.

## *In vitro* effects of NA

Experiments on isolated rat pancreatic islets have revealed that STZ significantly reduces proinsulin biosynthesis, and that this effect is attenuated by NA.<sup>49</sup> It is also known that NA ameliorates the inhibitory effect of STZ on glucose-stimulated insulin secretion by isolated rat islets.<sup>15,50,51</sup> STZ-induced impairment in glucose oxidation and decreased islet cell viability are also markedly improved by NA. The beneficial influence of NA on cell viability was recently confirmed in insulinoma cells (NIT-1) exposed to STZ.<sup>45</sup> Importantly, the protective action of NA on pancreatic islet cells also involves a decrease in DNA damage caused by STZ.<sup>15,52</sup>

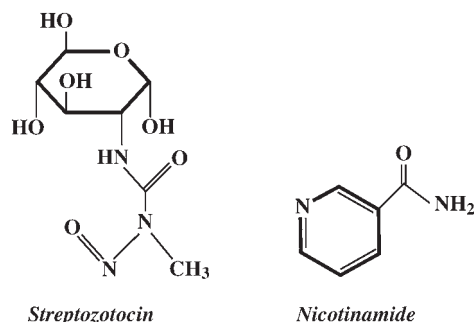


Figure 1 Chemical structure of streptozotocin and nicotinamide

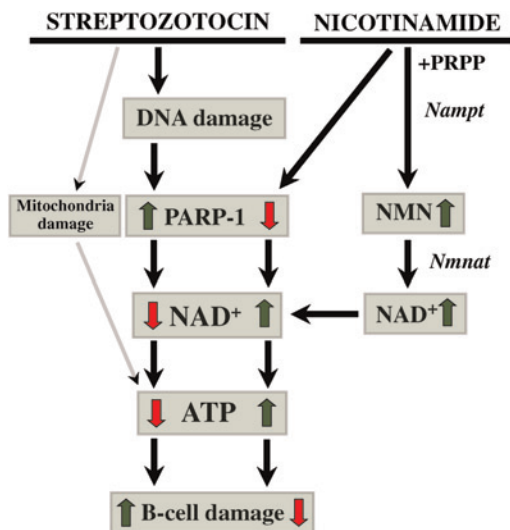
### In vivo effects of NA

Administration of the diabetogenic dose of STZ to rats causes a decrease in body weight; however, this is attenuated by pretreatment of animals with NA.<sup>8</sup> Numerous studies have also demonstrated that the STZ-induced increase in blood glucose is significantly blunted when NA is administered prior to STZ.<sup>8,53–56</sup> The advantageous effect of NA on blood glucose is due to the protection of B-cells against STZ-induced injury and is accompanied by increased blood insulin.<sup>8</sup> According to these results, studies on perfused pancreases have revealed that glucose-induced insulin output is substantially higher in the case of pancreases obtained from rats treated with STZ and NA compared with pancreases of rats that received only STZ.<sup>8</sup> It is also known that STZ administered to rats diminishes pancreatic insulin content, but this effect is dose-dependently prevented by NA given prior to STZ.<sup>8</sup> The protective action of NA is additionally confirmed by studies demonstrating reduced damage of islets and reduced methylation of pancreatic DNA in rats pretreated with NA compared with animals that received STZ alone.<sup>54,57</sup>

Data from the literature allows one to conclude that the mechanism of the protective action of NA against STZ-induced damage of B-cells involves two main effects: inhibition of PARP-1 and provision of NAD<sup>+</sup> (Figure 2), whereas other effects are of minor importance.

### Inhibition of PARP-1

NA is a well-known inhibitor of PARP-1. The inhibitory action of NA on the activity of this enzyme has been documented in different kinds of cells, including insulin-secreting cells of the pancreas.<sup>24,28,58,59</sup> Hyperactivity of PARP-1 in B-cells exposed to STZ is thought to be pivotal



**Figure 2** Schematic representation of the cytotoxic action of streptozotocin and the protective action of nicotinamide on B-cells. PARP-1, poly(adenosine triphosphate [ADP]-ribose) polymerase-1; PRPP, 5-phosphoribosylpyrophosphate; NMN, nicotinamide mononucleotide; Nampt, nicotinamide phosphoribosyltransferase; Nmnat, nicotinamide/nicotinic acid mononucleotide adenylyltransferase, ↑, increase/activation, ↓, decrease/inactivation. (A color version of this figure is available in the online journal)

for the cytotoxicity of STZ. This was demonstrated in experiments with different PARP-1 inhibitors and in studies on PARP-1-deficient animals.<sup>28,58,60–62</sup> In both cases, attenuation of PARP-1 action appeared to significantly decrease the cytotoxicity of STZ. Therefore, inhibition of PARP-1 by NA plays an important role in the mechanism of the protective action of NA on B-cells. The structure of PARP-1 consists of three main domains: an N-terminal DNA-binding domain, an automodification domain and a C-terminal region. A C-terminal region catalyses the synthesis of poly(ADP-ribose) and binds to target proteins. This active site of PARP-1 is divided into an acceptor and a donor site. The donor site is occupied by NAD<sup>+</sup> and is additionally divided into three subsites: a nicotinamide-ribose binding site, a phosphate binding site and an adenine-ribose binding site.<sup>24</sup> A detailed analysis performed by Pandya *et al.* has revealed that the inhibition of PARP-1 results from the interaction of NA with the binding site for the NA moiety of NAD<sup>+</sup>.<sup>59</sup> NA enters into hydrogen bond associations with Ser(904) and Gly(863) at the nicotinamide-ribose binding site of the active site of PARP-1. The inhibition of PARP-1 by NA is of a competitive nature since NA blocks the binding of NAD<sup>+</sup> to the catalytic domain of the enzyme.<sup>63</sup> The inhibitory concentration of NA for 50% reduction of PARP-1 activity (IC<sub>50</sub>) was estimated to be 210 μmol/L.<sup>59</sup>

### Provision of NAD<sup>+</sup>

Apart from the inhibition of PARP-1, the protective action of NA against cellular damage induced by STZ is thought to result from provision of NAD<sup>+</sup>. Jackson *et al.*<sup>64</sup> demonstrated that administration of NA to animals increases NAD<sup>+</sup> contents in different tissues. Moreover, NA increases intracellular NAD<sup>+</sup> and prevents NAD<sup>+</sup> depletion under different pathological conditions.<sup>46,48</sup> This effect is due to reduced utilization of NAD<sup>+</sup> and/or its increased biosynthesis. In mammals, NAD<sup>+</sup> is synthesized mainly from NA and its formation is catalyzed by two enzymes – nicotinamide phosphoribosyltransferase (Nampt) and nicotinamide/nicotinic acid mononucleotide adenylyltransferase (Nmnat). In the first step of NAD<sup>+</sup> generation catalyzed by Nampt, NA and 5-phosphoribosylpyrophosphate (PRPP) are converted to nicotinamide mononucleotide (NMN). Then, NMN undergoes transformation to NAD<sup>+</sup> in a reaction catalyzed by Nmnat. The activity of Nampt in B-cells is supposed to be low. However, Nampt acts as an intracellular (iNampt) and extracellular (eNampt) enzyme and in the case of calls with a low activity of iNampt, the majority of NMN utilized to form NAD<sup>+</sup> is generated extracellularly.<sup>65,66</sup>

### Characteristics of STZ–NA-induced diabetic rats

It should be emphasized that the effects induced in rats by STZ and NA vary depending on the doses of these two compounds, the age of the animals and the time of NA administration in relation to the administration of STZ. Other



factors, such as the administration route of STZ and the nutritional state of rats may also have some influence. In the case of relatively low doses of NA given to rats, its protective action is negligible. Conversely, high doses of NA may provide total protection.<sup>8,59</sup> The age of rats is also of major importance since B-cells of younger animals are less sensitive to STZ and are better protected by NA.<sup>53,67,68</sup> It is also known that the protective action of NA on B-cells decreases with the time elapsed after administration of STZ to rats.<sup>53</sup> This decrease is supposed to result from ATP depletion since the uptake of NA by B-cells is ATP-dependent.<sup>37</sup> In the majority of experiments, NA is given to rats 15 min before STZ (Table 1).

### Blood insulin and glucose

The concentrations of blood insulin in diabetic rats differ depending on doses of STZ and NA given to these animals. Blood insulin may be profoundly decreased when the dose of STZ is relatively high. Conversely, administration of a high dose of NA in relation to the amount of STZ substantially protects B-cells, and blood insulin is unchanged compared with control rats. Similarly to changes in insulinemia, diabetic rats may manifest very high hyperglycemia, moderate hyperglycemia, or blood glucose may be only slightly increased. It was found that in animals that were given low doses of NA (100–120 mg/kg body weight), administration of STZ at a dose ranging from 45 to 65 mg/kg body weight, causes a higher increase in blood glucose than that in rats receiving higher doses of NA (180–290 mg) and comparable doses of STZ (Table 1). However, in order to obtain a STZ-NA-induced diabetic model, doses of both compounds must be adjusted to avoid profound hyperglycemia, which is characteristic for STZ-induced diabetes.

The comparison of rats with STZ-NA-induced diabetes and rats with diabetes induced by STZ alone, used as a model of type 1 diabetes, demonstrates that in the latter animals, blood glucose is substantially higher, whereas blood insulin is much lower.<sup>8,55</sup> In obese (ob/ob) mice, representing a model of type 2 diabetes, both blood insulin and glucose are significantly elevated compared with normal mice.<sup>69</sup> In early stages of type 2 diabetes in humans, blood glucose is near normal or only moderately increased and blood insulin is increased. This is due to the compensatory hypersecretion of insulin. However, over time, hyperglycemia gradually develops and blood insulin is reduced.<sup>1,70</sup>

A glucose tolerance test reveals glucose intolerance in rats with STZ-NA-induced diabetes. In healthy animals, glucose challenge causes an initial increase in blood glucose followed by a gradual decrease. However, in diabetic rats, the fall in glycemia is very slow compared with control animals.<sup>8,71–73</sup> The insulin-secretory response to glucose load is impaired in STZ-NA-induced diabetic rats compared with the physiological response observed in control animals. Administration of glucose to normal rats significantly increases blood insulin followed by a rapid decrease. Conversely to these dynamic changes in healthy rats, in diabetic animals, the insulin-secretory response to

glucose is significantly abated and insulinemia is almost completely unchanged.<sup>8,71,72</sup> Therefore, glucose intolerance observed after glucose challenge in rats with STZ-NA-induced diabetes is mainly due to impaired secretion of insulin. This is in contrast to ob/ob mice, in which increased blood glucose is accompanied by increased blood insulin and hyperglycemia results from insulin resistance.<sup>69</sup> In humans with type 2 diabetes, glucose challenge induces a rise in blood glucose which is markedly higher than in healthy people and is comparable with that observed in rats with STZ-NA-induced diabetes. However, in type 2 diabetic humans, hyperglycemia observed after glucose load usually results from both insulin resistance and impaired function of B-cells.<sup>70</sup>

Importantly, in rats with STZ-NA-induced diabetes, the glucose intolerance may be alleviated by pharmacological compounds, which enhance secretion of insulin such as sulfonylurea drugs. The well-known insulinotropic action of sulfonylureas results from the closure of ATP-sensitive K<sup>+</sup> channels in the plasma membrane. In the B-cells of healthy individuals, this effect triggers insulin release and substantially potentiates insulin secretion induced by glucose.<sup>74</sup> In STZ-NA-induced diabetic rats, the combination of glucose and tolbutamide significantly increases blood insulin and improves glucose tolerance compared with effects caused by glucose alone.<sup>8</sup> Moreover, Chi *et al.*<sup>56</sup> revealed that a single administration of glibenclamide alone to rats with STZ-NA-induced diabetes reduces blood glucose with a simultaneous rise in blood insulin. Similar effects were demonstrated in diabetic animals receiving glibenclamide for 21 days or glyclazide for 30 days.<sup>75,76</sup>

### B-cells

Insulin-secreting cells of rats with STZ-NA-induced diabetes are characterized by numerous functional and metabolic abnormalities compared with B-cells of non-diabetic animals (Table 2). Comparative studies have demonstrated significant differences in the pattern of insulin secretion by pancreatic islets isolated from control and diabetic rats. In the case of control islets perfused with 16.7 mmol/L glucose, a characteristic biphasic insulin secretory response develops. Islets of diabetic rats exposed to 16.7 mmol/L glucose also respond by an initial increase in insulin release; however, the second phase is not generated. Moreover, total secretion of insulin is significantly reduced in the case of islets derived from diabetic rats.<sup>77</sup> Similarly to the results obtained in experiments on pancreatic islets, studies on isolated perfused pancreases stimulated by 16.7 mmol/L glucose demonstrated a preserved first phase of insulin secretion, but lacked the second phase in diabetic rats.<sup>72</sup> In the other experiments on perfused pancreases stimulated by glucose, both the first and second phases of insulin secretion were blunted in rats with STZ-NA-induced diabetes. However, the magnitude of these changes depends on the doses of STZ and NA administered to animals.<sup>8</sup> Static incubations of pancreatic islets isolated from diabetic rats revealed that insulin secretion induced by 8.3 mmol/L glucose may be unchanged or reduced compared with control islets.<sup>71,78</sup> However, both studies

**Table 1** Induction of diabetes and blood glucose and insulin concentrations in control and STZ–NA-induced diabetic rats

Dose of STZ* and way of treatment	Dose of NA*	Body weight/age on the day of induction of diabetes	Blood glucose (mmol/L)	Blood insulin (ng/mL)	Time of examination after induction of diabetes	References	
65 mg, iv	100 mg	220–230 g 10-week-old	C 6.6	C 2.20	4 weeks	8	
			D 31.2	D 0.30	Non-fasted		
	180 mg		C 6.6	C 2.20			
	D 10.4		D 1.56				
230 mg	350 mg	C 6.6	C 2.20				
		D 8.5	D 1.94				
65 mg, iv	230 mg	220–230 g 10-week-old	C 7.2	C 2.19	3 weeks	71	
			D 8.9	D 1.96			
60 mg, iv	290 mg	2–3 months	C 7.0	C 3.9	3–5 weeks	78	
60 mg, iv	270 mg	220–230 g	D 8.8	D 3.3	Non-fasted	72	
			C 6.1	C 3.8	2 weeks		
65 mg, iv	260 mg	220–240 g 10-week-old	D 7.5	D 2.8	23 days	87	
			C 7.1	–			3 months
			D 9.3	–			
			C 5.4	C 4.36			
60 mg, iv	270 mg	2–3 months	D 8.5	D 3.53	Fasted	77	
			C 6.7	–	5–8 weeks		
80 mg, ip	230 mg	200–250 g	D 8.3	–	Non-fasted	101	
			C 5.4	–	4 weeks		
50 mg, iv	180 mg (30 min)	2-month-old	D 9.6	–	Non-fasted	102	
			C 5.6	C 0.28	8 weeks		
50 mg, iv	180 mg (30 min)	2-month-old	D 8.7	D 0.27	4 weeks	103	
			C 5.7	C 0.28			8 weeks
65 mg, ip	110 mg	180–200 g Overnight fasted	D 8.6	D 0.25	45 days	93	
			C 5.5	C 0.48			Fasted
60 mg, ip	120 mg	250–280 g Overnight fasted	D 8.8	D 0.27	21 days	75	
			C 4.1	C 5.16			Fasted
60 mg, iv	120 mg	8–10 weeks Overnight fasted	D 13.3	D 2.18	2 weeks	55	
			C 4.3	–			
60 mg, iv	200 mg	250–300 g	–	C 7.7	4 weeks	56	
			–	D 7.8			
60 mg, iv	210 mg	2–3 months	C 5.9	C 1.87	2 weeks	104	
			D 8.2	D 1.40			
45 mg, ip	110 mg	200–220 g Overnight fasted	C 4.8	C 0.41	30 days	92	
			D 14.5	D 0.20	Overnight fasted		
65 mg, ip	230 mg	200–250 g Overnight fasted	C 6.5	–	5 days	97	
			D 7.8	–			
50 mg, ip	110 mg	160–180 g 12 h fasted	C 5.3	C 0.56	37 days	89	
			D 15.5	D 0.26	12 h fasted		
45 mg, ip	110 mg	180–220 g Overnight fasted	C 5.0	C 0.67	45 days	73	
			D 15.5	D 0.25	Overnight fasted		
45 mg, ip	110 mg	180–220 g Fasted	C 5.2	C 0.51	45 days	99	
			D 15.7	D 0.15	Fasted		
45 mg, ip	110 mg	180–220 g Overnight fast	C 4.7	C 0.54	48 days	90	
			D 15.4	D 0.15	Overnight fasted		
50 mg, ip	110 mg	160–180 g 6-week-old 12 h fasted	C 5.3	C 0.63	37 days	85	
			D 17.7	D 0.14	Fasted		
45 mg, ip	110 mg	180–220 g 6-week-old	C 5.1	C 0.51	45 days	100	
			D 14.9	D 0.16	Overnight fasted		
60 mg, ip	146 mg	200–225 g Fasted	C 4.4	C 0.65	24 h	59	
			D 9.3	D 0.18			
	292 mg 439 mg (45 min)	150–200 g Overnight fasted	D 8.2	D 0.40	23 days	86	
			D 6.6	D 0.52			Fasted
65 mg, ip	60 mg	200–220 g Overnight fasted	C 5.0	C 1.07	45 days	94	
45 mg, ip	110 mg	200–220 g Overnight fasted	D 23.0	D 0.39	Fasted		
			C 5.5	C 0.67			
			D 16.0	D 0.32			

\*Per kg body weight

C, control rats; D, diabetic rats; iv, intravenous administration; ip, intraperitoneal administration

Streptozotocin (STZ) is administered in 100 mmol/L citrate buffer, pH = 4.5, whereas nicotinamide (NA) is dissolved in saline and is administered intraperitoneally usually 15 min before STZ (with some exceptions, indicated in parenthesis)

**Table 2** Characteristics of the insulin-secreting cells of STZ-NA-induced diabetic rats compared with cells of control animals

Effect	Experimental conditions	References
Reduced insulin secretion	2.8 mmol/L glucose	Isolated islets 78
	2.8 mmol/L glucose	Perifused islets 77
	8.3 and 16.6 mmol/L glucose	Isolated islets 71
	16.7 mmol/L glucose	Perfused pancreas 72
Lack of the second phase of insulin secretion	16.7 mmol/L glucose	Perifused islets 77
	16.7 mmol/L glucose	Perfused pancreas 72
Preserved response to non-glucose secretagogues	16.7 mmol/L glucose	Perifused islets 75
	5 mmol/L glucose + 0.19 mmol/L tolbutamide	Perfused pancreas 8
Hypersensitivity to arginine	10 mmol/L $\alpha$ -ketoisocaproate	Isolated islets 78
	7 mmol/L arginine + 2.8 mmol/L glucose	Perfused pancreas 8
	10 mmol/L arginine + 2.8 mmol/L glucose	Perifused islets 77
Reduced activity of constitutive NO synthase		Isolated islets 77
Reduced glucose utilization	16.7 mmol/L glucose	Isolated islets 78
Reduced activity of mitochondrial FAD-glycerophosphate dehydrogenase		Isolated islets 78

STZ, streptozotocin; NA, nicotinamide; NO, nitric oxide; FAD, flavin adenine dinucleotide

demonstrated a significantly lower insulin-secretory response of diabetic islets to 16.7 mmol/L glucose.<sup>71,78</sup> It was also found that  $\alpha$ -ketoisocaproate, an insulin secretagogue metabolized only in mitochondria, and sulfonylurea tolbutamide generate a similar secretion of insulin in control and diabetic islets.<sup>8,78</sup>

*In vitro* studies have demonstrated that B-cells isolated from rats with type 1 diabetes induced by STZ alone, conversely to the insulin-secreting cells of STZ-NA-induced diabetic rats, are almost completely unresponsive to stimulation by glucose or sulfonylureas.<sup>8</sup> This is in contrast to ob/ob mice since pancreatic islets of these animals were demonstrated to secrete more insulin compared with healthy mice. Moreover, the biphasic insulin-secretory response to glucose in ob/ob mice is preserved.<sup>69,79</sup> Pancreatic islets of type 2 diabetic humans, conversely to islets of rats with STZ-NA-induced diabetes, are usually characterized by a loss of the first phase of insulin secretion; however, the second phase may also be deteriorated.<sup>5,80</sup>

Interestingly, insulin release stimulated by arginine appeared to be exaggerated in the case of pancreases and islets derived from rats with STZ-NA-induced diabetes.<sup>8,77</sup> This hypersecretion of insulin in the presence of arginine was proposed to be due to reduced activity of constitutive NO synthase in islet cells.<sup>77</sup> Excessive insulin secretion induced by arginine was also revealed in Goto-Kakizaki (GK) rats, a non-obese model of type 2 diabetes.<sup>80</sup> In type 2 diabetic patients with reduced insulin-secretory response to glucose, B-cell response to arginine may be normal or slightly increased.<sup>80,81</sup>

Novelli *et al.*<sup>78</sup> demonstrated that functional defects in B-cells of STZ-NA-induced diabetic rats are accompanied by metabolic abnormalities in these cells. Under physiological conditions, glucose-stimulated insulin secretion is preceded by glucose transport and oxidative metabolism to pyruvate. Then, pyruvate enters mitochondrial metabolism and the high activity of mitochondrial flavin adenine dinucleotide (FAD)-glycerolphosphate dehydrogenase (the key enzyme of the glycerophosphate shuttle) and malate-

aspartate shuttle and low activities of both lactate dehydrogenase and plasma membrane lactate/monocarboxylate transporter ensure efficient mitochondrial metabolism of pyruvate. This results in increased formation of ATP and induces the sequence of events involving the increase in the ATP/ADP ratio, the closure of the ATP-sensitive potassium channels, depolarization of the plasma membrane, opening of voltage-sensitive calcium channels and the rise in cytosolic  $Ca^{2+}$ . The increase in cytosolic  $Ca^{2+}$  triggers secretion of insulin. Moreover, other signals are generated to maintain the sustained secretion of insulin.<sup>74,82</sup> However, pancreatic islets of STZ-NA-induced diabetic rats were found to have reduced activity of mitochondrial FAD-glycerophosphate dehydrogenase compared with the activity of this enzyme in normal rats. The reduced activity of FAD-glycerophosphate dehydrogenase was also observed in pancreatic islets of type 2 diabetic humans and GK rats, but not in islets of ob/ob mice.<sup>69,83,84</sup> This indicates that some metabolic defects are similar in islets of both type 2 diabetic humans and STZ-NA-induced diabetic rats.

It was also revealed that the blockade of the malate-aspartate shuttle impairs insulin secretion more in islets of STZ-NA-induced diabetic rats than in islets of control rats. These abnormalities are accompanied by reduced glucose utilization by islets of diabetic rats, particularly at higher glucose concentrations.<sup>78</sup> Moreover, atrophy and destruction of B-cells, vacuolization, reduction of the number and size of islets, the decrease in the secretory granules of B-cells and other degenerative changes were shown in pancreatic islets isolated from STZ-NA-induced diabetic rats.<sup>78,85,86</sup> Induction of diabetes by STZ and NA also reduced islet insulin content.<sup>8,78,87</sup> However, this effect strongly depends on the doses of STZ and NA given to rats.<sup>8</sup>

Pancreatic insulin content in rats with type 1 diabetes induced by STZ is deeply reduced compared with STZ-NA-induced diabetic animals.<sup>8</sup> In contrast, islets of ob/ob mice contain much more insulin than islets of normal mice and B-cell hyperplasia is observed in these animals.<sup>69</sup>

In type 2 diabetic humans, insulin resistance is initially compensated by increased insulin secretion to maintain normoglycemia. This compensatory mechanism is thought to involve both enhanced secretory function of B-cells and increased B-cell mass. However, over time, exaggerated secretion of insulin leads to the progressive failure of B-cells, cells undergo apoptosis and B-cell mass is reduced.<sup>70</sup> In this context, islets of rats with STZ–NA-induced diabetes correspond to the stage of type 2 diabetes in humans when B-cell mass is reduced.

### Other abnormalities in diabetic rats

Pancreatic B-cell dysfunction and changes in blood glucose and insulin in STZ–NA-induced diabetic rats are accompanied by numerous other abnormalities. Increased activities of alkaline phosphatase, aspartate transaminase and alanine transaminase and changes in the activities of different enzymes of carbohydrate metabolism were demonstrated in rats with diabetes.<sup>76,88–90</sup>

Moreover, increased levels of tumor necrosis factor  $\alpha$  (TNF- $\alpha$ ), interleukin 1 $\beta$  (IL-1 $\beta$ ), IL-6, nuclear factor  $\kappa$ B (NF- $\kappa$ B) p65 unit and NO were found in these animals compared with control rats.<sup>85,88</sup> Recent studies have also demonstrated an impairment in the antioxidative defense system in STZ–NA-induced diabetic rats. The levels of lipid peroxides, hydroperoxides and protein carbonyls are significantly higher in plasma, pancreatic tissue and kidney of diabetic animals.<sup>85,88,91</sup> Simultaneously, the activities of superoxide dismutase, catalase, glutathione peroxidase and glutathione-S-transferase were found to be deeply reduced in erythrocytes, pancreatic tissue, liver and kidney of rats with diabetes compared with healthy animals.<sup>85,88,92–94</sup> However, changes observed in rats with STZ–NA-induced diabetes are less marked than in animals with diabetes induced by STZ alone. In ob/ob mice and type 2 diabetic humans, oxidative stress is also increased in different tissues and is supposed to contribute to some diabetic complications.<sup>95,96</sup>

### Utility of the STZ–NA-induced diabetic model

Rats with STZ–NA-induced diabetes are used in many studies testing the potential beneficial effects of various pharmacological and natural compounds on the course of diabetes. Experiments on these animals demonstrate that many of the tested compounds possess a real therapeutic value in diabetes.<sup>55,56,71–73,75,76,85–94,97–104</sup> These results indicate the high utility of the STZ–NA-induced diabetic model in this kind of studies.

Maintaining normoglycemia is one of the important problems in diabetes. Therefore, in many animal studies, the potential antihyperglycemic effects of different compounds and new drugs are tested. Rats with STZ–NA-induced diabetes manifest relatively mild hyperglycemia compared with animals with diabetes induced by STZ alone and therefore seem to be a better model for testing antihyperglycemic efficacy of various compounds. Many of these compounds, including some biologically active plant-derived

compounds and sulfonylurea drugs, were demonstrated to reduce blood glucose in rats with STZ–NA-induced diabetes.

Regenerative capacity of the endocrine pancreas is also studied using different animal models. Rats with STZ–NA-induced diabetes are characterized by moderately decreased B-cell mass compared with STZ-induced diabetic animals and thus constitute a good model in these studies.<sup>78,105</sup>

Since B-cells of STZ–NA-induced diabetic rats possess preserved insulin-secretory response to glucose and some other stimuli, these animals are often useful in studies of different aspects of B-cell dysfunction. These studies involve testing the effects of various compounds on blood insulin concentrations in diabetic animals and on insulin secretion by isolated pancreatic islets or perfused pancreas. Apart from functional investigations, pancreatic islets derived from STZ–NA-induced diabetic rats are also used to determine metabolic defects in B-cells.

Rats with diabetes induced by administration of STZ and NA are also very helpful in studies of diabetic complications, such as cardiovascular defects, effects of diabetes on exocrine pancreas and on diabetic nephropathy.<sup>87,88,101–104</sup> Experiments on these animals have demonstrated several symptoms of renal dysfunction – increased kidney weight, diminished creatinine clearance, renal hypertrophy and glomerular injury compared with non-diabetic rats.<sup>88,94,100</sup> Other diabetic complications, such as impairment in vascular dynamics, increased coronary resistance and cardiac defects were also found in diabetic rats.<sup>101–104</sup> Experiments on rats with STZ–NA-induced diabetes have demonstrated that some tested compounds are able to alleviate diabetic complications in these animals. Importantly, since the severity of diabetes in animals may be mild, moderate or grave, depending on doses of STZ and NA, this experimental model may be used to study diabetic complications of varying degrees of severity, from those present at the early stage of type 2 diabetic humans to complications in advanced diabetes.

Studies on STZ–NA-induced diabetic rats have demonstrated that the anti-oxidative defense system is impaired in these animals. Therefore, this model of diabetes is also a good tool for determining the anti-oxidative properties of different compounds. Some of the tested compounds were found to possess anti-oxidative activity in diabetic rats.

Other aspects of diabetes may also be elucidated using STZ–NA-induced diabetic rats and results of these experiments may be helpful in preventing and treating diabetes in humans.

### Summary

Administration of STZ and NA to adult rats causes partial destruction of B-cells which leads to a decrease in blood insulin and an increase in blood glucose in these animals. Although diabetes may be easily induced using STZ and NA, doses of these compounds must be adjusted to obtain the appropriate severity of diabetes. The severity of STZ–NA-induced diabetes is much lower than that of diabetes



induced by STZ alone; rats manifest moderate hyperglycemia and do not require exogenous insulin to survive.

The insulin-secretory response to glucose in STZ-NA-induced diabetes is impaired, particularly at higher glucose concentrations and the second phase of glucose-induced insulin secretion is lacking. Impairment in glucose-stimulated insulin secretion results from both a reduced mass of B-cells and some defects in existing cells. However, the insulin-secretory response to sulfonylurea drugs is preserved, and the response to arginine is exaggerated.

Diabetes induced by STZ and NA remains stable for a long time and thus this model of diabetes is suitable not only for short-term, but also for long-term, animal studies. Moreover, this model is very useful in studies of different aspects of diabetes, including diabetic complications and anti-diabetic properties of new drugs and some natural compounds.

#### ACKNOWLEDGEMENT

This study was supported by the Ministry of Science and Higher Education research project number: N N303 551439.

#### REFERENCES

- American Diabetes Association. Diagnosis and classification of diabetes mellitus. *Diab Care* 2006;**29**:43–8
- Hansen JB, Arkhammar PO, Bodvarsdottir TB, Wahl P. Inhibition of insulin secretion as a new drug target in the treatment of metabolic disorders. *Curr Med Chem* 2004;**11**:1595–615
- Lencioni C, Lupi R, Del Prato S. Beta-cell failure in type 2 diabetes mellitus. *Curr Diab Rep* 2008;**8**:179–84
- Gredal C, Rosenfalck AM, Dejgaard A, Hilsted J. Impaired first-phase insulin response predicts postprandial blood glucose increment in patients with recently diagnosed type 2 diabetes. *Scand J Clin Lab Invest* 2007;**67**:327–36
- Marchetti P, Del Prato S, Lupi R, Del Guerra S. The pancreatic beta-cell in human type 2 diabetes. *Nutr Metab Cardiovasc Dis* 2006;**16**:3–6
- Del Guerra S, Lupi R, Marselli L, Masini M, Bugliani M, Sbrana S, Torri S, Pollera M, Boggi U, Mosca F, Del Prato S, Marchetti P. Functional and molecular defects of pancreatic islets in human type 2 diabetes. *Diabetes* 2005;**54**:727–35
- Anello M, Lupi R, Spampinato D, Piro S, Masini M, Boggi U, Del Prato S, Rabuazzo AM, Purrello F, Marchetti P. Functional and morphological alterations of mitochondria in pancreatic beta cells from type 2 diabetic patients. *Diabetologia* 2005;**48**:282–9
- Masiello P, Broca C, Gross R, Roye M, Manteghetti M, Hillaire-Buys D, Novelli M, Ribes G. Experimental NIDDM: development of a new model in adult rats administered streptozotocin and nicotinamide. *Diabetes* 1998;**47**:224–9
- Szkudelski T. The mechanism of alloxan and streptozotocin action in B cells of the rat pancreas. *Physiol Res* 2001;**50**:536–46
- Lenzen S. The mechanisms of alloxan- and streptozotocin-induced diabetes. *Diabetologia* 2008a;**51**:216–26
- Schnedl WJ, Ferber S, Johnson JH, Newgard CB. STZ transport and cytotoxicity. Specific enhancement in GLUT2-expressing cells. *Diabetes* 1994;**43**:1326–33
- Elsner M, Guldbakke B, Tiedge M, Munday R, Lenzen S. Relative importance of transport and alkylation for pancreatic beta-cell toxicity of streptozotocin. *Diabetologia* 2000;**43**:1528–33
- LeDoux SP, Woodley SE, Patton NJ, Wilson GL. Mechanisms of nitrosourea-induced beta-cell damage. Alterations in DNA. *Diabetes* 1986;**35**:866–72
- Yamamoto H, Uchigata Y, Okamoto H. Streptozotocin and alloxan induce DNA strand breaks and poly(ADP-ribose) synthetase in pancreatic islets. *Nature* 1981a;**294**:284–6
- Bedoya FJ, Solano F, Lucas M. N-monomethyl-arginine and nicotinamide prevent streptozotocin-induced double strand DNA break formation in pancreatic rat islets. *Experientia* 1996;**52**:344–7
- Delaney CA, Dunger A, Di Matteo M, Cunningham JM, Green MH, Green IC. Comparison of inhibition of glucose-stimulated insulin secretion in rat islets of Langerhans by streptozotocin and methyl and ethyl nitrosoureas and methanesulphonates. Lack of correlation with nitric oxide-releasing or O<sub>6</sub>-alkylating ability. *Biochem Pharmacol* 1995;**50**:2015–20
- Yamamoto H, Uchigata Y, Okamoto H. DNA strand breaks in pancreatic islets by *in vivo* administration of alloxan or streptozotocin. *Biochem Biophys Res Commun* 1981b;**103**:1014–20
- Takasu N, Komiya I, Asawa T, Nagasawa Y, Yamada T. Streptozotocin and alloxan-induced H<sub>2</sub>O<sub>2</sub> generation and DNA fragmentation in pancreatic islets. H<sub>2</sub>O<sub>2</sub> as mediator for DNA fragmentation. *Diabetes* 1991;**40**:1141–5
- Morgan NG, Cable HC, Newcombe NR, Williams GT. Treatment of cultured pancreatic B-cells with streptozotocin induces cell death by apoptosis. *Biosci Rep* 1994;**14**:243–50
- Chan JY, Leung PC, Che CT, Fung KP. Protective effects of an herbal formulation of Radix Astragali, Radix Codonopsis and Cortex Lycii on streptozotocin-induced apoptosis in pancreatic beta-cells: an implication for its treatment of diabetes mellitus. *Phytother Res* 2008;**22**:190–6
- Koo KB, Suh HJ, Ra KS, Choi JW. Protective effect of cyclo(his-pro) on streptozotocin-induced cytotoxicity and apoptosis *in vitro*. *J Microbiol Biotechnol* 2011;**21**:218–27
- Zhang R, Kim JS, Kang KA, Piao MJ, Kim KC, Hyun JW. Protective mechanism of KIOM-4 in streptozotocin-induced pancreatic  $\beta$ -cells damage is involved in the inhibition of endoplasmic reticulum stress. *Evid Based Complement Alternat Med* 2011;**pii**:231938
- Satoh MS, Lindahl T. Role of poly(ADP-ribose) formation in DNA repair. *Nature* 1992;**356**:356
- Cepeda V, Fuertes MA, Castilla J, Alonso C, Quevedo C, Soto M, Pérez JM. Poly(ADP-ribose) polymerase-1 (PARP-1) inhibitors in cancer chemotherapy. *Rec Pat Anticancer Drug Discov* 2006;**1**:39–53
- Peralta-Leal A, Rodríguez-Vargas JM, Aguilar-Quesada R, Rodríguez MI, Linares JL, de Almodóvar MR, Oliver FJ. PARP inhibitors: new partners in the therapy of cancer and inflammatory diseases. *Free Radic Biol Med* 2009;**47**:13–26
- Gradwohl G, Ménissier de Murcia JM, Molinete M, Simonin F, Koken M, Hoeijmakers JH, de Murcia G. The second zinc-finger domain of poly(ADP-ribose) polymerase determines specificity for single-stranded breaks in DNA. *Proc Natl Acad Sci USA* 1990;**87**:2990–4
- Sandler S, Swenne I. Streptozotocin, but not alloxan, induces DNA repair synthesis in mouse pancreatic islets *in vitro*. *Diabetologia* 1983;**25**:444–7
- Wada R, Yagihashi S. Nitric oxide generation and poly(ADP-ribose) polymerase activation precede beta-cell death in rats with a single high-dose injection of streptozotocin. *Virchows Arch* 2004;**444**:375–82
- Martin DS, Bertino JR, Koutcher JA. ATP depletion + pyrimidine depletion can markedly enhance cancer therapy: fresh insight for a new approach. *Cancer Res* 2000;**60**:6776–83
- Anderson T, Schein PS, McMenamin MG, Cooney DA. Streptozotocin diabetes. Correlation with extent of depression of pancreatic islet nicotinamide adenine dinucleotide. *J Clin Invest* 1974;**54**:672–7
- Yamamoto H, Okamoto H. Protection by picolinamide, a novel inhibitor of poly(ADP-ribose) synthetase, against both streptozotocin-induced depression of proinsulin synthesis and reduction of NAD content in pancreatic islets. *Biochem Biophys Res Commun* 1980;**95**:474–81
- Sandler S, Welsh M, Andersson A. Streptozotocin-induced impairment of islet B-cell metabolism and its prevention by a hydroxyl radical scavenger and inhibitors of poly(ADP-ribose) synthetase. *Acta Pharmacol Toxicol (Copenh)* 1983;**53**:392–400
- Bolaffi JL, Nagamatsu S, Harris J, Grodsky GM. Protection by thymidine, an inhibitor of polyadenosine diphosphate ribosylation, of streptozotocin inhibition of insulin secretion. *Endocrinology* 1987;**120**:2117–22
- Nukatsuka M, Yoshimura Y, Nishida M, Kawada J. Importance of the concentration of ATP in rat pancreatic beta cells in the mechanism of streptozotocin-induced cytotoxicity. *J Endocrinol* 1990;**127**:161–5

- 35 Magni G, Amici A, Emanuelli M, Orsomando G, Raffaelli N, Ruggieri S. Structure and function of nicotinamide mononucleotide adenylyltransferase. *Curr Med Chem* 2004;**11**:873–85
- 36 Maldonado A, Trueheart PA, Renold AE, Sharp GW. Effects of streptozotocin *in vitro* on proinsulin biosynthesis, insulin release and ATP content of isolated rat islets of Langerhans. *Diabetologia* 1976;**12**:471–81
- 37 Sofue M, Yoshimura Y, Nishida M, Kawada J. Uptake of nicotinamide by rat pancreatic beta cells with regard to streptozotocin action. *J Endocrinol* 1991;**131**:135–8
- 38 Turk J, Corbett JA, Ramanadham S, Bohrer A, McDaniel ML. Biochemical evidence for nitric oxide formation from streptozotocin in isolated pancreatic islets. *Biochem Biophys Res Commun* 1993;**197**:1458–64
- 39 Jeng JY, Yeh TS, Chiu YH, Lee YC, Cheng HH, Hsieh RH. Linoleic acid promotes mitochondrial biogenesis and maintains mitochondrial structure for prevention of streptozotocin damage in RIN-m5F cells. *Biosci Biotechnol Biochem* 2009;**73**:1262–7
- 40 Kwon NS, Lee SH, Choi CS, Kho T, Lee HS. Nitric oxide generation from streptozotocin. *FASEB J* 1994;**8**:529–33
- 41 Kröncke KD, Fehsel K, Sommer A, Rodriguez ML, Kolb-Bachofen V. Nitric oxide generation during cellular metabolism of the diabetogenic N-methyl-N-nitroso-urea streptozotocin contributes to islet cell DNA damage. *Biol Chem Hoppe Seyler* 1995;**376**:179–85
- 42 Nukatsuka M, Sakurai H, Yoshimura Y, Nishida M, Kawada J. Enhancement by streptozotocin of O<sub>2</sub><sup>-</sup> radical generation by the xanthine oxidase system of pancreatic beta-cells. *FEBS Lett* 1988;**239**:295–8
- 43 Lenzen S. Oxidative stress: the vulnerable beta-cell. *Biochem Soc Trans* 2008b;**36**:343–7
- 44 Mokhtari D, Myers JW, Welsh N. The MAPK kinase-1 is essential for stress-induced pancreatic islet cell death. *Endocrinology* 2008;**149**:3046–53
- 45 Cheon H, Cho JM, Kim S, Baek SH, Lee MK, Kim KW, Yu SW, Solinas G, Kim SS, Lee MS. Role of JNK activation in pancreatic beta-cell death by streptozotocin. *Mol Cell Endocrinol* 2010;**321**:131–7
- 46 Li F, Chong ZZ, Maiese K. Cell life versus cell longevity: the mysteries surrounding the NAD<sup>+</sup> precursor nicotinamide. *Curr Med Chem* 2006;**13**:883–95
- 47 Maiese K, Chong ZZ, Hou J, Shang YC. The vitamin nicotinamide: translating nutrition into clinical care. *Molecules* 2009;**14**:3446–85
- 48 Surjana D, Halliday GM, Damian DL. Role of nicotinamide in DNA damage, mutagenesis, and DNA repair. *J Nucleic Acids* 2010;**2010**. Article ID. 157591. doi:10.4061/2010/157591
- 49 Uchigata Y, Yamamoto H, Kawamura A, Okamoto H. Protection by superoxide dismutase, catalase, and poly(ADP-ribose) synthetase inhibitors against alloxan- and streptozotocin-induced islet DNA strand breaks and against the inhibition of proinsulin synthesis. *J Biol Chem* 1982;**257**:6084–8
- 50 Akpan JO, Wright PH, Dulin WE. A comparison of the effects of streptozotocin, N-methylnitrosourea and alloxan on isolated islets of Langerhans. *Diabete Metab* 1987;**13**:122–8
- 51 Masiello P, Novelli M, Fierabracci V, Bergamini E. Protection by 3-aminobenzamide and nicotinamide against streptozotocin-induced beta-cell toxicity *in vivo* and *in vitro*. *Res Commun Chem Pathol Pharmacol* 1990;**69**:17–32
- 52 Heller B, Bürkle A, Radons J, Fengler E, Jalowy A, Müller M, Burkart V, Kolb H. Analysis of oxygen radical toxicity in pancreatic islets at the single cell level. *Biol Chem Hoppe Seyler* 1994;**375**:597–602
- 53 Masiello P, Bergamini E. Nicotinamide and streptozotocin diabetes in the rat. Factors influencing the effectiveness of the protection. *Experientia* 1976;**33**:1246–7
- 54 Hassan N, Janjua MZ. The optimum dose of nicotinamide for protection of pancreatic beta-cells against the cytotoxic effect of streptozotocin in albino rat. *J Ayub Med Coll Abbottabad* 2001;**13**:26–30
- 55 Su HC, Hung LM, Chen JK. Resveratrol, a red wine antioxidant, possesses an insulin-like effect in streptozotocin-induced diabetic rats. *Am J Physiol Endocrinol Metab* 2006;**290**:1339–46
- 56 Chi TC, Chen WP, Chi TL, Kuo TF, Lee SS, Cheng JT, Su MJ. Phosphatidylinositol-3-kinase is involved in the antihyperglycemic effect induced by resveratrol in streptozotocin-induced diabetic rats. *Life Sci* 2007;**80**:1713–20
- 57 Bennett RA, Pegg AE. Alkylation of DNA in rat tissues following administration of streptozotocin. *Cancer Res* 1981;**41**:2786–90
- 58 Burkart V, Wang ZQ, Radons J, Heller B, Hecceg Z, Stingl L, Wagner EF, Kolb H. Mice lacking the poly(ADP-ribose) polymerase gene are resistant to pancreatic beta-cell destruction and diabetes development induced by streptozotocin. *Nat Med* 1999b;**5**:314–9
- 59 Pandya KG, Patel MR, Lau-Cam CA. Comparative study of the binding characteristics to and inhibitory potencies towards PARP and *in vivo* antidiabetogenic potencies of taurine, 3-aminobenzamide and nicotinamide. *J Biomed Sci* 2010;**17**:16
- 60 Burkart V, Blaeser K, Kolb H. Potent beta-cell protection *in vitro* by an isoquinoline-derived PARP inhibitor. *Horm Metab Res* 1999a;**31**:641–4
- 61 Masutani M, Suzuki H, Kamada N, Watanabe M, Ueda O, Nozaki T, Jishage K, Watanabe T, Sugimoto T, Nakagama H, Ochiya T, Sugimura T. Poly(ADP-ribose) polymerase gene disruption conferred mice resistant to streptozotocin-induced diabetes. *Proc Natl Acad Sci USA* 1999;**96**:2301–4
- 62 Pieper AA, Brat DJ, Krug DK, Watkins CC, Gupta A, Blackshaw S, Verma A, Wang ZQ, Snyder SH. Poly(ADP-ribose) polymerase-deficient mice are protected from streptozotocin-induced diabetes. *Proc Natl Acad Sci USA* 1999;**96**:3059–64
- 63 Zhang J, Li JH. Poly(ADP-ribose) polymerase inhibition by genetic and pharmacological means. In: Szabó C, ed. *Cell Death: The Role of PARP*. Boca Raton: CRC Press LLC, 2000:279–304
- 64 Jackson TM, Rawling JM, Roebuck BD, Kirkland JB. Large supplements of nicotinic acid and nicotinamide increase tissue NAD<sup>+</sup> and poly(ADP-ribose) levels but do not affect diethylnitrosamine-induced altered hepatic foci in Fischer-344 rats. *J Nutr* 1995;**125**:1455–61
- 65 Revollo JR, Körner A, Mills KF, Satoh A, Wang T, Garten A, Dasgupta B, Sasaki Y, Wolberger C, Townsend RR, Milbrandt J, Kiess W, Imai S. Nampt/PBEF/Visfatin regulates insulin secretion in beta cells as a systemic NAD biosynthetic enzyme. *Cell Metab* 2007;**6**:363–75
- 66 Imai S. Nicotinamide phosphoribosyltransferase (Nampt): a link between NAD biology, metabolism, and diseases. *Curr Pharm Des* 2009;**15**:20–8
- 67 Masiello P, De Paoli A, Bergamini E. Age-dependent changes in the sensitivity of the rat to a diabetogenic agent (streptozotocin). *Endocrinology* 1975;**96**:787–9
- 68 Masiello P, De Paoli AA, Bergamini E. Influence of age on the sensitivity of the rat to streptozotocin. *Horm Res* 1979;**11**:262–74
- 69 Lindström P. The physiology of obese-hyperglycemic mice (ob/ob mice). *Scient World J* 2010;**7**:666–85
- 70 Prentki M, Nolan CJ. Islet beta cell failure in type 2 diabetes. *J Clin Invest* 2006;**116**:1802–12
- 71 Broca C, Gross R, Petit P, Sauvage Y, Manteghetti M, Tournier M, Masiello P, Gomis R, Ribes G. 4-Hydroxyisoleucine: experimental evidence of its insulinotropic and antidiabetic properties. *Am J Physiol* 1999;**277**:617–23
- 72 Fierabracci V, De Tata V, Pocai A, Novelli M, Barberà A, Masiello P. Oral tungstate treatment improves only transiently alteration of glucose metabolism in a new rat model of type 2 diabetes. *Endocrine* 2002;**19**:177–84
- 73 Pari L, Sankaranarayanan C. Beneficial effects of thymoquinone on hepatic key enzymes in streptozotocin-nicotinamide induced diabetic rats. *Life Sci* 2009;**85**:830–4
- 74 Deeney JT, Prentki M, Corkey BE. Metabolic control of beta-cell function. *Semin Cell Dev Biol* 2000;**11**:267–75
- 75 Shirwaikar A, Rajendran K, Barik R. Effect of aqueous bark extract of *Garuga pinnata* Roxb. in streptozotocin-nicotinamide induced type-II diabetes mellitus. *J Ethnopharmacol* 2006;**107**:285
- 76 Palsamy P, Subramanian S. Resveratrol, a natural phytoalexin, normalizes hyperglycemia in streptozotocin-nicotinamide induced experimental diabetic rats. *Biomem Pharmacother* 2008;**62**:598–605
- 77 Novelli M, Pocai A, Lajoix AD, Befly P, Bezzi D, Marchetti P, Gross R, Masiello P. Alteration of beta-cell constitutive NO synthase activity is involved in the abnormal insulin response to arginine in a new rat model of type 2 diabetes. *Mol Cell Endocrinol* 2004;**219**:77–82
- 78 Novelli M, Fabregat ME, Fernandez-Alvarez J, Gomis R, Masiello P. Metabolic and functional studies on isolated islets in a new rat model of type 2 diabetes. *Mol Cell Endocrinol* 2001;**175**:57–66

- 79 Lenzen S. Insulin secretion by isolated perfused rat and mouse pancreas. *Am J Physiol* 1979;**236**:391–400
- 80 Portha B, Lacraz G, Kergoat M, Homo-Delarche F, Giroix MH, Bailbé D, Gangnerau MN, Dolz M, Tourrel-Cuzin C, Movassat J. The GK rat beta-cell: a prototype for the diseased human beta-cell in type 2 diabetes? *Mol Cell Endocrinol* 2009;**297**:73–85
- 81 Palmer JP, Benson JW, Walter RM, Ensink JW. Arginine-stimulated acute phase of insulin and glucagon secretion in diabetic subjects. *J Clin Invest* 1976;**58**:565–70
- 82 Rutter GA. Nutrient-secretion coupling in the pancreatic islet beta-cell: recent advances. *Mol Aspects Med* 2001;**22**:247–84
- 83 Fernandez-Alvarez J, Conget I, Rasschaert J, Sener A, Gomis R, Malaisse WJ. Enzymatic, metabolic and secretory patterns in human islets of type 2 (non-insulin-dependent) diabetic patients. *Diabetologia* 1994;**37**:177–81
- 84 Rasschaert J, Giroix MH, Conget I, Mercan D, Leclercq-Meyer V, Sener A, Portha B, Malaisse WJ. Pancreatic islet response to dicarboxylic acid esters in rats with type 2 diabetes: enzymatic, metabolic and secretory aspects. *J Mol Endocrinol* 1994;**13**:209–17
- 85 Palsamy P, Subramanian S. Ameliorative potential of resveratrol on proinflammatory cytokines, hyperglycemia mediated oxidative stress, and pancreatic beta-cell dysfunction in streptozotocin–nicotinamide-induced diabetic rats. *J Cell Physiol* 2010;**224**:423–32
- 86 Li HT, Wu XD, Davey AK, Wang J. Antihyperglycemic effects of baicalin on streptozotocin–nicotinamide induced diabetic rats. *Phytother Res* 2011;**25**:189–94
- 87 Kuntz E, Pinget M, Damgé C. Effects of cholecystokinin octapeptide on the exocrine pancreas in a new rat model of type 2 diabetes. *Eur J Pharmacol* 2002;**448**:253–61
- 88 Palsamy P, Subramanian S. Resveratrol protects diabetic kidney by attenuating hyperglycemia-mediated oxidative stress and renal inflammatory cytokines via Nrf2-Keap1 signaling. *Biochim Biophys Acta* 2011;**1812**:719–31
- 89 Palsamy P, Subramanian S. Modulatory effects of resveratrol on attenuating the key enzymes activities of carbohydrate metabolism in streptozotocin–nicotinamide-induced diabetic rats. *Chem Biol Interact* 2009;**179**:356–62
- 90 Pari L, Srinivasan S. Antihyperglycemic effect of diosmin on hepatic key enzymes of carbohydrate metabolism in streptozotocin–nicotinamide-induced diabetic rats. *Biomed Pharmacother* 2010;**64**:477–81
- 91 Kumar EK, Janardhana GR. Antidiabetic activity of alcoholic stem extract of *Nervilia plicata* in streptozotocin–nicotinamide induced type 2 diabetic rats. *J Ethnopharmacol* 2010;**133**:480–3
- 92 Pari L, Saravanan R. Beneficial effect of succinic acid monoethyl ester on erythrocyte membrane bound enzymes and antioxidant status in streptozotocin–nicotinamide induced type 2 diabetes. *Chem Biol Interact* 2007;**169**:15–24
- 93 Murugan P, Pari L. Antioxidant effect of tetrahydrocurcumin in streptozotocin–nicotinamide induced diabetic rats. *Life Sci* 2006;**79**:1720–8
- 94 Rajarajeswari N, Pari L. Antioxidant role of coumarin on streptozotocin–nicotinamide-induced type 2 diabetic rats. *J Biochem Mol Toxicol* 2011;**25**:355–61
- 95 Evans JL, Goldfine ID, Maddux BA, Grodsky GM. Oxidative stress and stress-activated signaling pathways: a unifying hypothesis of type 2 diabetes. *Endocr Rev* 2002;**23**:599–622
- 96 Chung MY, Park HJ, Manautou JE, Koo SJ, Bruno RS. Green tea extract protects against nonalcoholic steatohepatitis in ob/ob mice by decreasing oxidative and nitrate stress responses induced by proinflammatory enzymes. *J Nutr Biochem* 2012;**23**:361–7
- 97 Ortiz-Andrade RR, Sánchez-Salgado JC, Navarrete-Vázquez G, Webster SP, Binnie M, García-Jiménez S, León-Rivera I, Cigarroa-Vázquez P, Villalobos-Molina R, Estrada-Soto S. Antidiabetic and toxicological evaluations of naringenin in normoglycaemic and NIDDM rat models and its implications on extra-pancreatic glucose regulation. *Diabetes Obes Metab* 2008;**10**:1097–104
- 98 Tahara A, Matsuyama-Yokono A, Nakano R, Someya Y, Hayakawa M, Shibasaki M. Antihyperglycemic effects of ASP8497 in streptozotocin–nicotinamide induced diabetic rats: comparison with other dipeptidyl peptidase-IV inhibitors. *Pharmacol Rep* 2009;**61**:899–908
- 99 Karthikesan K, Pari L, Menon VP. Combined treatment of tetrahydrocurcumin and chlorogenic acid exerts potential antihyperglycemic effect on streptozotocin–nicotinamide-induced diabetic rats. *Gen Physiol Biophys* 2010;**29**:23–30
- 100 Pari L, Karthikesan K, Menon VP. Comparative and combined effect of chlorogenic acid and tetrahydrocurcumin on antioxidant disparities in chemical induced experimental diabetes. *Mol Cell Biochem* 2010;**341**:109–17
- 101 Ozyazgan S, Kutluata N, Afşar S, Özdaş SB, Akkan AG. Effect of glucagon-like peptide-1(7–36) and exendin-4 on the vascular reactivity in streptozotocin/nicotinamide-induced diabetic rats. *Pharmacology* 2005;**74**:119–26
- 102 Chang KC, Tseng CD, Chou TF, Cho YL, Chi TC, Su MJ, Tseng YZ. Arterial stiffening and cardiac hypertrophy in a new rat model of type 2 diabetes. *Eur J Clin Invest* 2006a;**36**:1–7
- 103 Chang KC, Tseng CD, Wu MS, Liang JT, Tsai MS, Cho YL, Tseng YZ. Aminoguanidine prevents arterial stiffening in a new rat model of type 2 diabetes. *Eur J Clin Invest* 2006b;**36**:528–35
- 104 L'Abbate A, Neglia D, Vecoli C, Novelli M, Ottaviano V, Baldi S, Barsacchi R, Paolicchi A, Masiello P, Drummond GS, McClung JA, Abraham NG. Beneficial effect of heme oxygenase-1 expression on myocardial ischemia-reperfusion involves an increase in adiponectin in mildly diabetic rats. *Am J Physiol Heart Circ Physiol* 2007;**293**:3532–41
- 105 Masiello P. Animal models of type 2 diabetes with reduced pancreatic beta-cell mass. *Int J Biochem Cell Biol* 2006;**38**:873–93

(Received November 3, 2011, Accepted February 7, 2012)