

Interface[®]

Artemis Biosolutions
Case Study
School Carpet

Clean with purpose

Case Study Summary

2

- An Interface modular tile was presented to Interface Microbiology Services
- The tile was from an independent school system in the mid-west
- The tile had patches of darkened stains

Case Study Summary Cont.

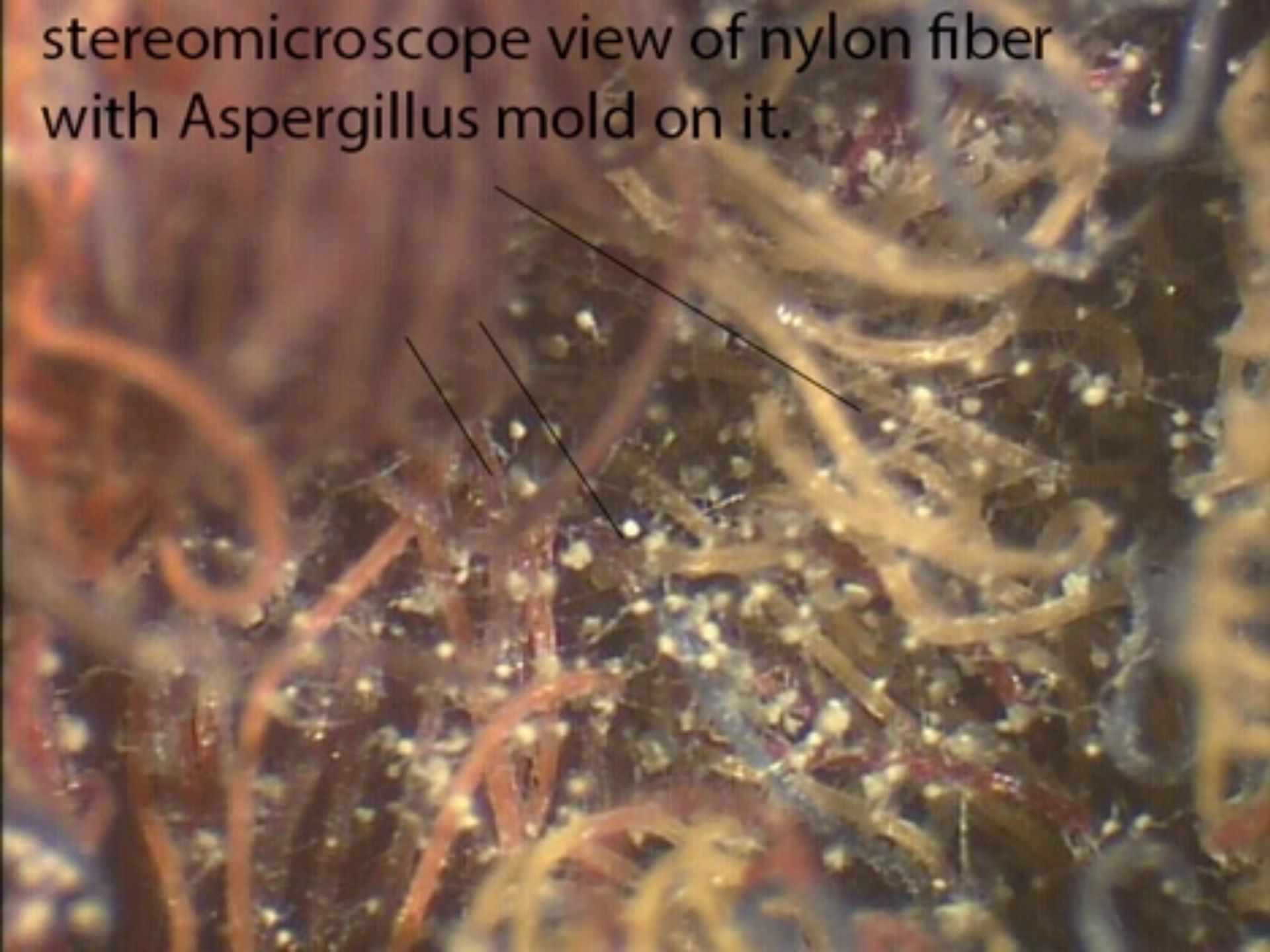
- The tile had a matted soiled appearance
- The tile also had a musty smell
- This presentation summarizes corrective and restorative steps to document effective removal of mold on carpet
- The study also documents the sustained biostatic properties of Intersept coupled with sanitizing maintenance

Soiled carpet developed patches of mold

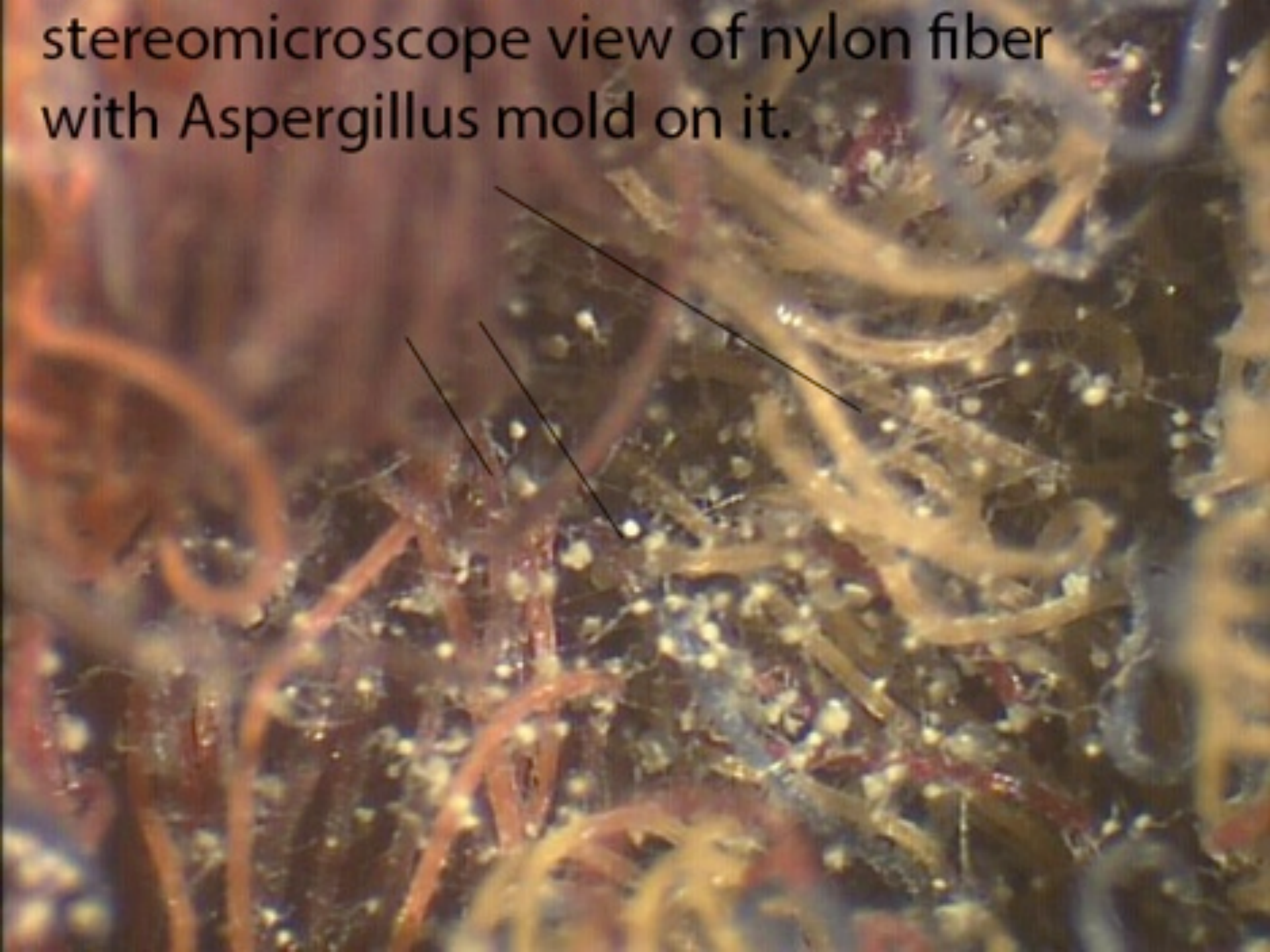
4



stereomicroscope view of nylon fiber
with *Aspergillus* mold on it.



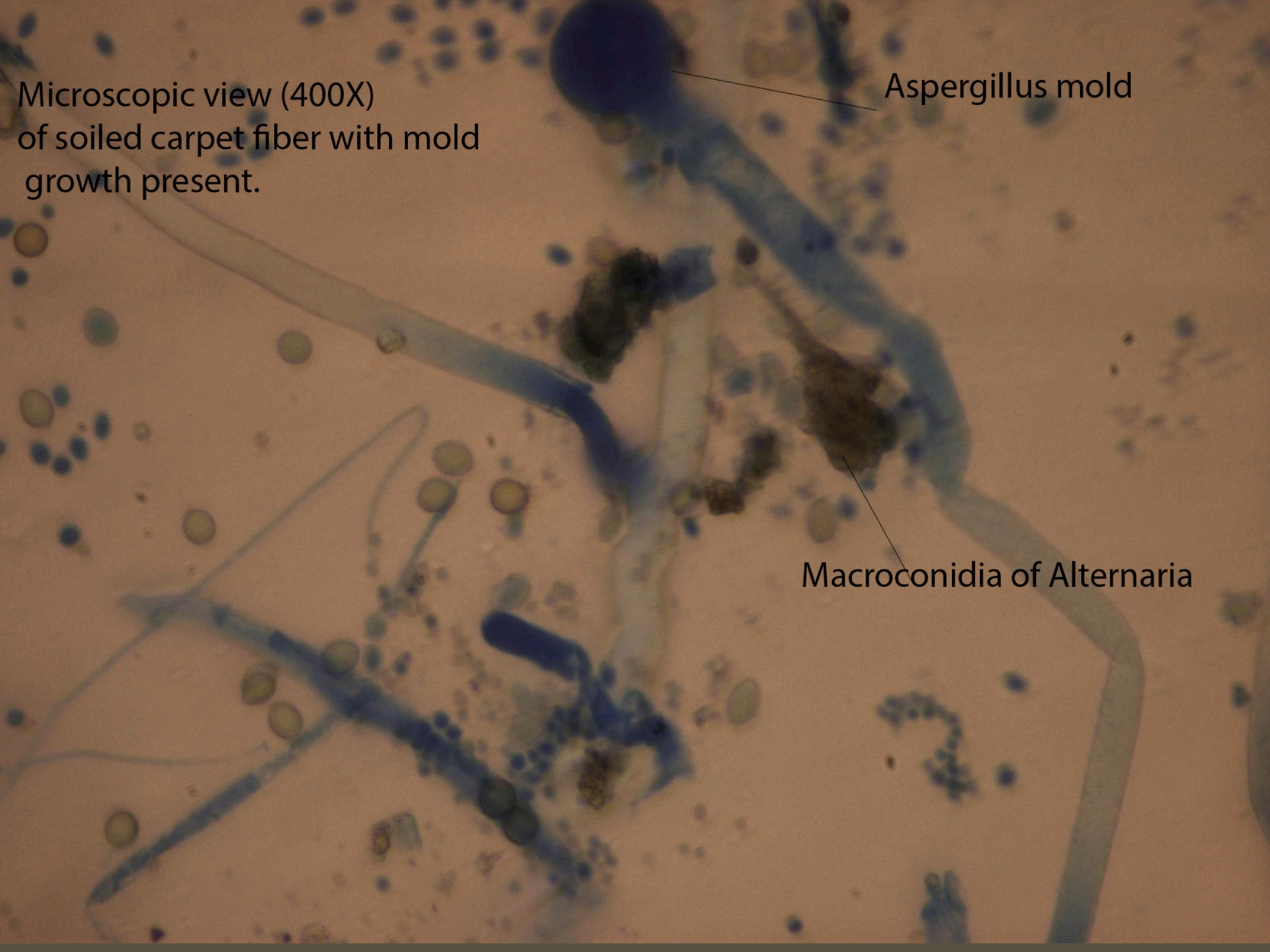
stereomicroscope view of nylon fiber
with *Aspergillus* mold on it.



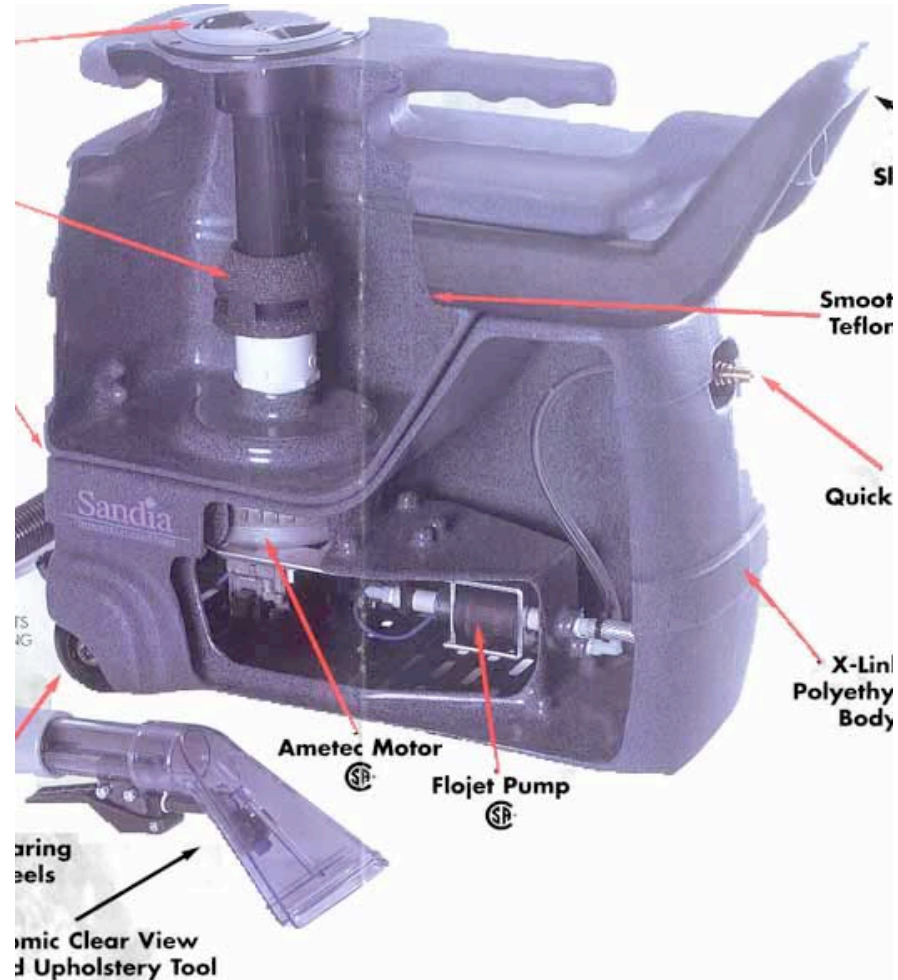
Microscopic view (400X)
of soiled carpet fiber with mold
growth present.

Aspergillus mold

Macroconidia of Alternaria



Sandia 3 gallon extractor

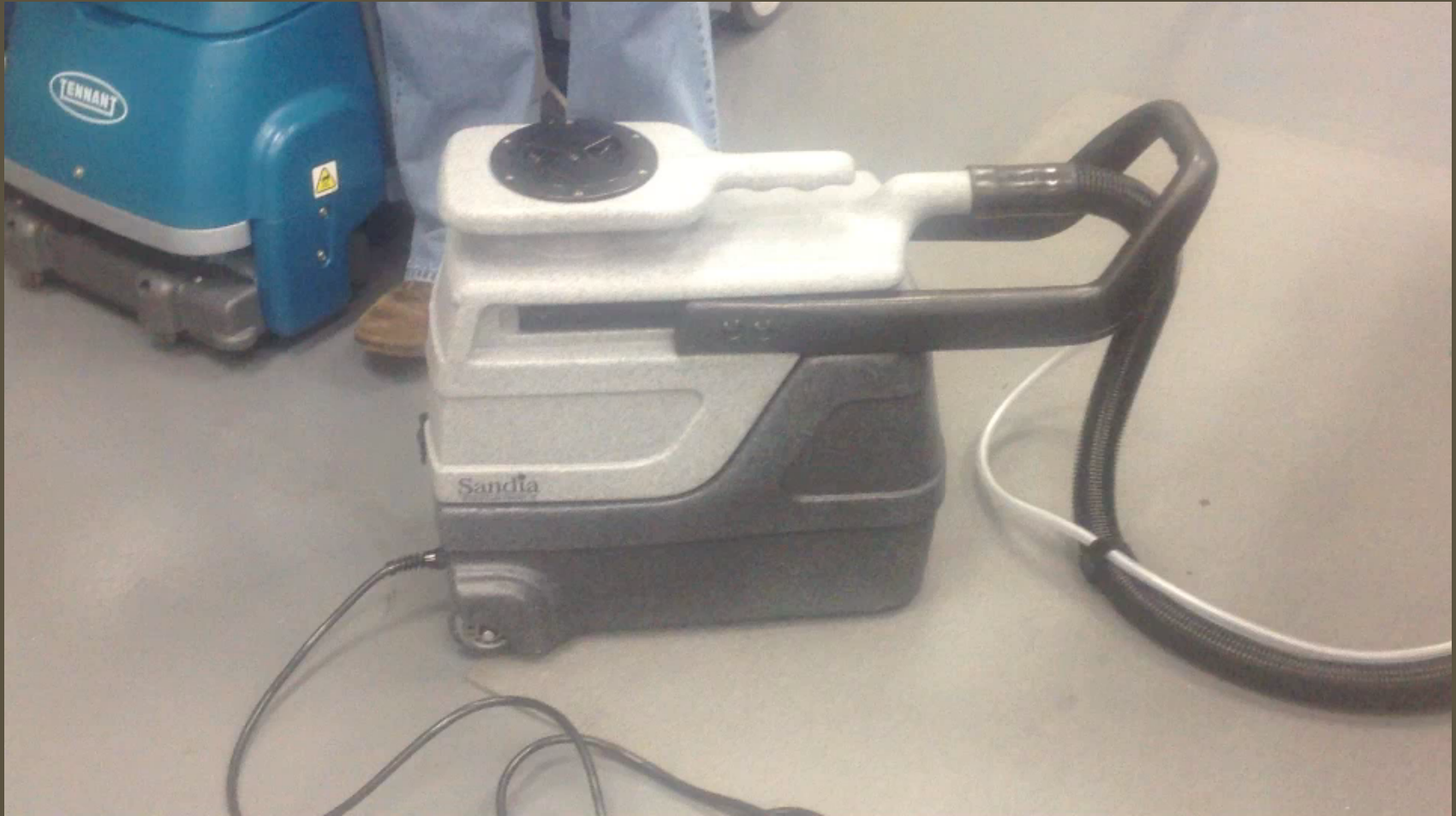


Interface Process for Biocontaminant Removal and Inactivation

- Carpet was pre-spotted with Artemis Biosolutions Carpet (50:50 side A and side B) , brush agitated into the pile, allowed to stand 15 minutes
- A dual motor-3 gallon extractor (Sandia) was used to vacuum extract soil and biocontaminants from the carpet
- The extractor used diluted Artemis Biosolutions product at 2 oz per gallon each (Side A and Side B)
- The pre-spotting and extraction procedure was repeated twice with extra vacuum only passes to remove residual moisture
- Carpet was allowed to air dry 24 hours prior to any further processing



Spot Extraction Sandia 3 Gallon Extractor



Appearance of extraction recovery water from 1/2 IPS 48 carpet tile



heavy soiling



EXIT

Soil from 1/2 carpet tile from
IPS 48



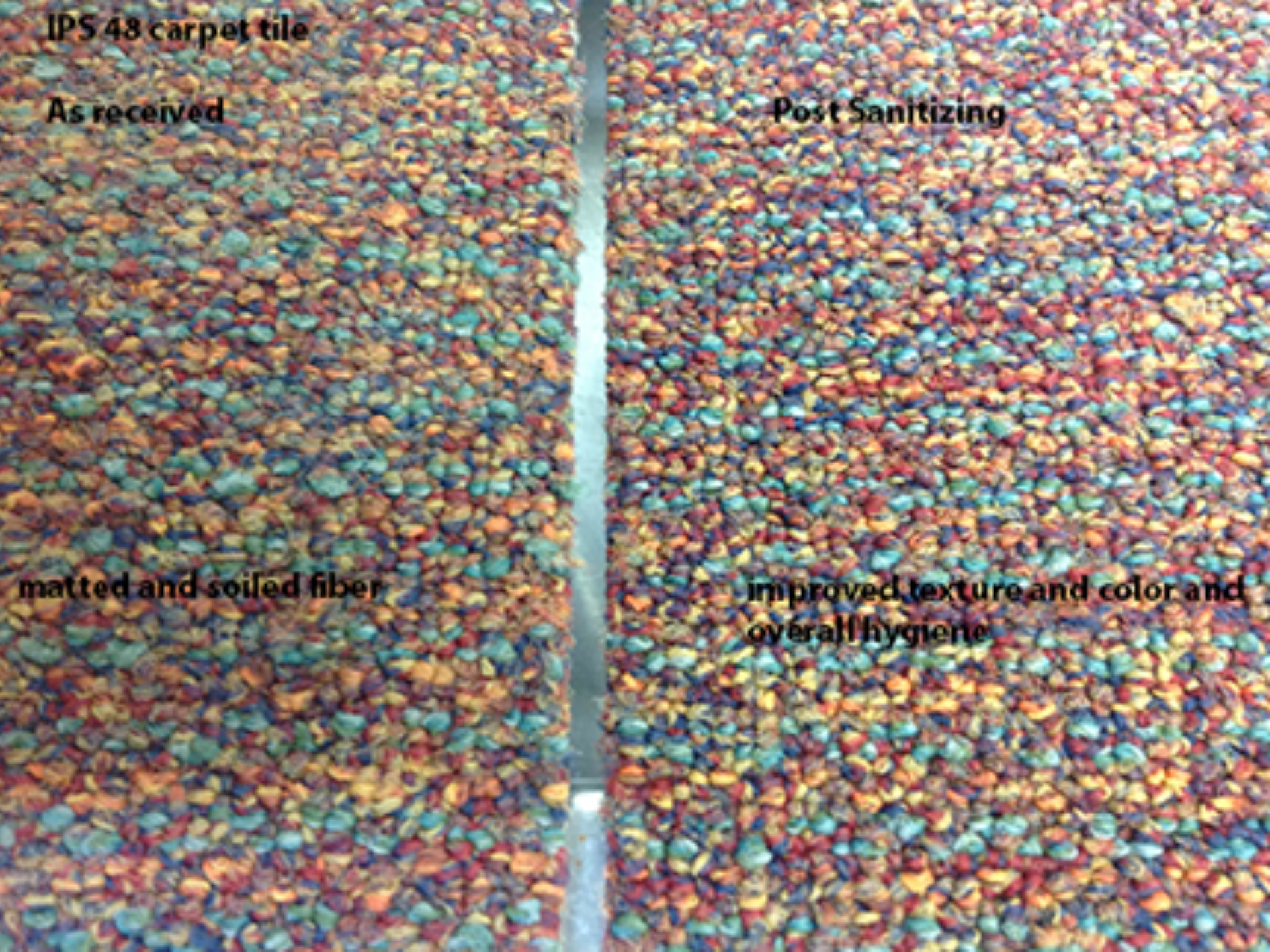
IPS 48 carpet tile

As received

Post Sanitizing

matted and soiled fiber

**improved texture and color and
overall hygiene**



The IPS 48 carpet fiber was cleaner and mold free after the sanitizing procedure with Artemis Biosolutions Carpet



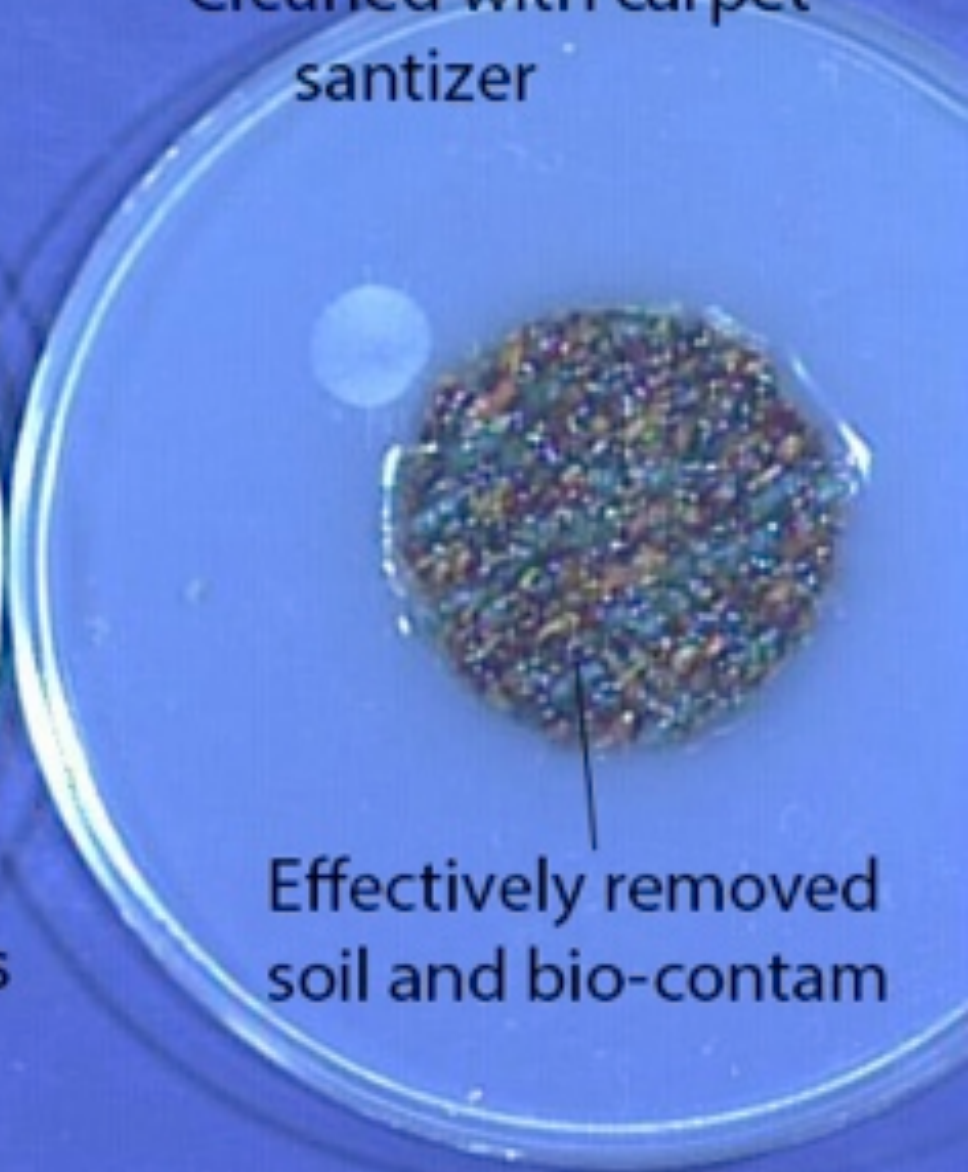
Post-santizing culture of IPS 48 carpet

Soiled half of tile



Aspergillus, Alternaria
Staphylococcus and Bacillus

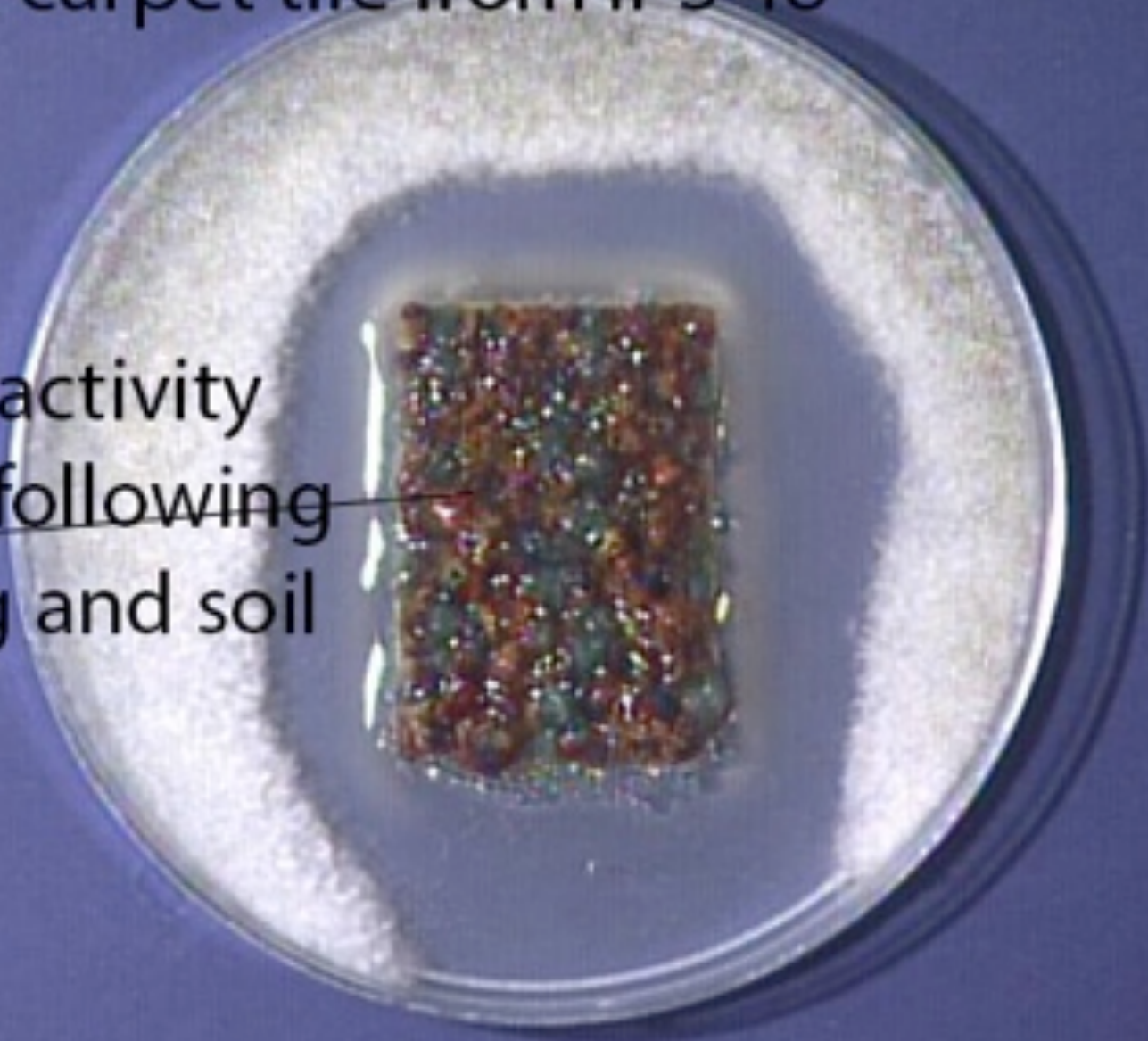
Cleaned with carpet
santizer



Effectively removed
soil and bio-contam

ASTM 2471 mold challenge of sanitized
Interface carpet tile from IPS 48

biostatic activity
restored following
sanitizing and soil
removal



3 C's of effective sanitizing

18

- Use the right **C**hemistry
- Use the right **C**oncentration
- Allow adequate **C**ontact Time

Protecting Appearance and Sanitizing

19

- Soiled carpet harbors mold spores
- Routine vacuuming will remove particulates including spores
- Intersept biostat inhibits mold between cleanings
- Use of Artemis Biosolution Carpet effectively cleaned and removed biocontaminants and soil
- If faced with soiled musty carpet...

–It's what we would use.....