

# Activation of Human Leukocytes Reduces Surface P-Selectin Glycoprotein Ligand-1 (PSGL-1, CD162) and Adhesion to P-Selectin In Vitro<sup>1</sup>

Kelly L. Davenpeck,<sup>2\*</sup> Mary E. Brummet,\* Sherry A. Hudson,\* Ruth J. Mayer,<sup>†</sup> and Bruce S. Bochner<sup>3\*</sup>

P-selectin glycoprotein ligand-1 (PSGL-1), the primary ligand for P-selectin, is constitutively expressed on the surface of circulating leukocytes. The objective of this study was to examine the effect of leukocyte activation on PSGL-1 expression and PSGL-1-mediated leukocyte adhesion to P-selectin. PSGL-1 expression was examined via indirect immunofluorescence and flow cytometry before and after leukocyte stimulation with platelet activating factor (PAF) and PMA. Human neutrophils, monocytes, and eosinophils were all demonstrated to have significant surface expression of PSGL-1 at baseline, which decreased within minutes of exposure to PAF or PMA. PSGL-1 was detected in the supernatants of PAF-activated neutrophils by immunoprecipitation. Along with the expression data, this suggests removal of PSGL-1 from the cell surface. Soluble PSGL-1 was also detected in human bronchoalveolar lavage fluids. Down-regulation of PSGL-1 was inhibited by EDTA. However, inhibitors of L-selectin shedding and other sheddase inhibitors did not affect PSGL-1 release, suggesting that PSGL-1 may be shed by an as yet unidentified sheddase or removed by some other mechanism. Functionally, PSGL-1 down-regulation was associated with decreased neutrophil adhesion to immobilized P-selectin under both static and flow conditions, with the most profound effects seen under flow conditions. Together, these data indicate that PSGL-1 can be removed from the surface of activated leukocytes, and that this decrease in PSGL-1 expression has profound effects on leukocyte binding to P-selectin, especially under conditions of flow. *The Journal of Immunology*, 2000, 165: 2764–2772.

Leukocyte recruitment is a multistep process that can be separated into at least the following three distinct but overlapping steps: 1) leukocyte tethering and rolling, 2) firm adhesion and transendothelial migration, and 3) adhesion to tissue-matrix proteins. Each of these steps is mediated by the sequential interaction of adhesion molecules on the leukocyte surface with molecular counterligands on vascular endothelium and extravascular structures. Since their identification nearly a decade ago, E-selectin, L-selectin, and P-selectin, have been demonstrated to mediate the initial phase of leukocyte recruitment and leukocyte tethering and rolling on the endothelial surface, whereas firm adhesion, transendothelial migration, and extravascular matrix-adhesive interactions are primarily mediated by  $\beta_1$  and  $\beta_2$  integrins interacting with counterligands from the Ig superfamily (e.g., ICAM-1, ICAM-2, VCAM-1) on the endothelium and surrounding tissue structures (1, 2).

Though the selectins share the common function of mediating leukocyte rolling, their localization and the regulation of their ex-

pression, as well as their carbohydrate-containing ligands, are quite different. L-selectin is constitutively expressed on the surface of circulating leukocytes, whereas P-selectin and E-selectin are both expressed by activated vascular endothelium (2, 3). The counterligands for the selectins share the common feature of being sialylated, fucosylated, mucin-like ligands, and molecules such as the tetrasaccharide sialyl Lewis<sup>x</sup>, containing  $\alpha_{2,3}$ -linked terminal sialic acid residues and  $\alpha_{1,3}$ -linked fucose, can bind to all three selectins. Although the carbohydrate features of the selectin ligands can be similar, distinct high-affinity ligands for each of the selectins have been identified that derive their specificity from the protein or lipid structure that present these common carbohydrate structures (4, 5).

One of the best-characterized selectin ligands is P-selectin glycoprotein ligand-1 (PSGL-1).<sup>4</sup> First identified as a specific P-selectin ligand, this homodimer of two 120-kDa subunits is now known to bind all three selectins, with the highest affinity for P-selectin (6, 7). Similar to L-selectin, PSGL-1 is constitutively expressed on the surface of most circulating leukocytes and has been demonstrated to play a role in leukocyte-leukocyte, leukocyte-platelet, and leukocyte-endothelial interactions (7). In particular, PSGL-1 has been demonstrated to be the essential ligand mediating leukocyte rolling on and adhesion to P-selectin. In this regard, mAb blockade of PSGL-1 function can completely inhibit neutrophil, eosinophil, basophil, and monocyte adhesion to P-selectin under static and flow conditions (7–9).

Though a great deal is known about the protein and carbohydrate structures of PSGL-1, much less is known about the regulation of PSGL-1 expression on the leukocyte surface. As has been demonstrated for other adhesion molecules, changes in adhesion

\*Division of Clinical Immunology, Department of Medicine, Johns Hopkins University School of Medicine, Baltimore, MD 21224; and <sup>†</sup>SmithKline Beecham Pharmaceuticals, King of Prussia, PA 19406

Received for publication October 21, 1999. Accepted for publication June 19, 2000.

The costs of publication of this article were defrayed in part by the payment of page charges. This article must therefore be hereby marked *advertisement* in accordance with 18 U.S.C. Section 1734 solely to indicate this fact.

<sup>1</sup> This work was supported in part by National Institutes of Health Grant HL-49545 and by a Developing Investigators Award from the Burroughs Wellcome Foundation. K.L.D. was supported by National Institutes of Health Training Grant AI-07056.

<sup>2</sup> Current address: Department of Cardiology, Thomas Jefferson University, 1025 Walnut Street, Philadelphia, PA 19107.

<sup>3</sup> Address correspondence and reprint requests to Dr. Bruce S. Bochner, Johns Hopkins Asthma and Allergy Center, 5501 Hopkins Bayview Circle, Baltimore, MD 21224. E-mail address: bbochner@welch.jhu.edu

<sup>4</sup> Abbreviations used in this paper: PSGL-1, P-selectin glycoprotein ligand-1; PAF, platelet activating factor; BAL, bronchoalveolar lavage; MFI, mean fluorescence intensity.

molecule expression on the leukocyte surface can alter the ability of leukocytes to interact with the endothelium. For instance, L-selectin is rapidly shed from the surface of activated granulocytes, and L-selectin shedding significantly decreases the ability of activated granulocytes to roll on and therefore adhere to endothelial cells in both *in vitro* and *in vivo* systems (2, 10). The shedding of L-selectin appears to be through a proteolytic mechanism involving a surface-expressed metalloproteinase, as hydroxamic acid-based inhibitors of zinc-dependent metalloproteinases have been demonstrated to block L-selectin shedding (11, 12). Most recently L-selectin shedding has been demonstrated to be blocked by tissue inhibitor of metalloproteinase-3, the only member of the tissue inhibitor of metalloproteinase family of protease inhibitors found exclusively in the extracellular matrix (13).

In the case of PSGL-1, neutrophil activation has previously been reported to decrease interaction of neutrophils with immobilized P-selectin by redistributing PSGL-1 on the neutrophil surface (14, 15). However, the effects of leukocyte activation on total surface expression of PSGL-1 have not been extensively examined. The purpose of the studies described in this manuscript was to determine whether, like L-selectin, the total surface expression of PSGL-1, the critical leukocyte ligand for P-selectin-mediated leukocyte-endothelial interactions, could be altered through leukocyte activation. The data presented in this paper demonstrate that total surface expression of PSGL-1 is significantly decreased on human neutrophils, monocytes, and eosinophils following stimulation with platelet activating factor (PAF) and PMA. Similar to L-selectin, the decrease in surface expression of PSGL-1 appears to be the result of PSGL-1 release from the leukocyte surface based on its immunoprecipitation from supernatants of activated neutrophils. Evidence for release of PSGL-1 *in vivo* is provided by the detection of soluble PSGL-1 in human bronchoalveolar lavage (BAL) fluids. Down-regulation of PSGL-1 was inhibited by EDTA but not by inhibition of L-selectin sheddases, suggesting that PSGL-1 may either be shed by an as yet unidentified sheddase or other mechanism. Finally, activation-induced down-regulation of PSGL-1 resulted in significant reductions in binding to P-selectin under both static and dynamic conditions.

## Materials and Methods

### Granulocyte purification

Neutrophils were isolated from EDTA-anticoagulated blood of normal donors layered over Percoll (1.080 g/ml) and centrifuged for 20 min at room temperature, followed by hypotonic lysis of RBC at 4°C as described (16). Eosinophils were isolated from blood of allergic donors as described (17) using Percoll (1.090 g/ml) density gradient centrifugation followed by hypotonic lysis of RBC at 4°C. Contaminating neutrophils were removed by immunomagnetic beads (Dynal, Lake Success, NY) using CD16 Ab (Medarex, Lebanon, NH) (18). Cell purity, routinely >95%, was determined by light microscopic analysis of Diff-Quik-stained (Shandon, Pittsburgh, PA) cytocentrifugation preparations. Viability, routinely >97%, was determined by erythrosin B dye exclusion.

### Flow cytometric analysis

Flow cytometry was used to quantitate expression of PSGL-1 and L-selectin on the surface of leukocytes. The PSGL-1-binding, function-blocking mAb PL-1 (IgG1, 1 µg/ml), the nonfunction-blocking mAb PL-2 (IgG1, 10 µg/ml), as well as the L-selectin-function-blocking mAb DREG-56 (IgG1, 3 µg/ml) were all purchased from Coulter-Immunotech (Hialeah, FL). Isolated granulocytes or mixed whole blood leukocytes were incubated with the primary mAb in PBS containing 2 mg/ml BSA and 4 mg/ml human IgG for 30 min at 4°C as previously described (19). Binding of the mAb was detected using a saturating concentration of FITC-conjugated goat anti-mouse IgG/IgM polyclonal antiserum (Coulter-Immunotech) and compared with labeling with irrelevant control mouse monoclonal IgG1 (10 µg/ml). Labeled cells were analyzed using an EPICS Profile II flow cytometer (Coulter-Immunotech) with excitation at 488 nm. Mean

fluorescence intensity (MFI) for IgG1 was subtracted from MFI for PSGL-1 or L-selectin to derive net MFI.

Surface expression of PSGL-1 was examined on neutrophils, eosinophils, and monocytes under control conditions and following stimulation with PAF and PMA (Sigma, St. Louis, MO). In the majority of experiments, isolated human neutrophils suspended in PBS containing 1 mM  $\text{Ca}^{2+}$  and  $\text{Mg}^{2+}$  were incubated with PAF or PMA at concentrations ranging from  $10^{-10}$  M to  $10^{-6}$  M for 10 min at 37°C. Leukocyte stimulation was terminated by centrifugation at 4°C and resuspension of the cells in  $\text{Ca}^{2+}$ - and  $\text{Mg}^{2+}$ -free buffer. Control (unstimulated) aliquots of neutrophils were also incubated at 37°C for 10 min. To reduce any further spontaneous shedding, leukocytes were maintained at 4°C in  $\text{Ca}^{2+}$ - and  $\text{Mg}^{2+}$ -free buffer at all times subsequent to the 10-min incubation at 37°C. As described for neutrophil experiments, experiments were also conducted using isolated human eosinophils, whereas experiments examining monocyte expression of PSGL-1 were done using mixed whole blood leukocyte populations. In these experiments, monocytes were identified by their scatter characteristics and were distinguished from lymphocytes by light scatter and CD14 staining (20, 21).

### Immunoprecipitation and Western blot analysis of PSGL-1

Isolated human neutrophils ( $50\text{--}100 \times 10^6$  cells) were divided into two equal aliquots and each was suspended in 1 ml of PBS containing 1 mM  $\text{Ca}^{2+}$  and  $\text{Mg}^{2+}$ . The neutrophils were incubated for 10 min at 37°C in the presence or absence of  $10^{-6}$  M PAF, and cell stimulation was terminated by centrifugation at 4°C. The supernatants were harvested, and cell pellets were then lysed on ice for 5 min with Triton lysis buffer (10 mM Tris (pH 7.4), 150 mM NaCl, 5 mM EDTA, 10% (v/v) glycerol, 1% Triton X-100, 1 mM PMSF, 10 µg/ml aprotinin, 1 mM sodium orthovanadate, 1 mM leupeptin, and 1 mM pepstatin A (all from Sigma)). Equal concentrations of each protease inhibitor were also added to the cell supernatants. Insoluble material was removed by centrifugation at 14,000 rpm for 5 min. Whole cell extracts and supernatants, as well as BAL fluids obtained 20 h after saline or ragweed-allergen extract segmental endobronchial challenge of appropriate allergic asthmatic subjects (19) were incubated for 2 h at 4°C with mAb PL-1 bound to protein A-Sepharose beads (Pharmacia Biotech, Uppsala, Sweden). The beads were washed four to five times in lysis buffer, 20 µl sample buffer with or without  $\beta$ -mercaptoethanol (Sigma) was added, and the samples were boiled for 5 min. Immunoprecipitates were then separated by PAGE with or without SDS and transferred to Trans-Blot transfer medium and polyvinylidene difluoride membranes (Bio-Rad, Hercules, CA). The blots were blocked in 5% BSA in PBS containing 0.1% Tween 20. The membranes were immunoblotted with mAb PL-1, followed by HRP-conjugated secondary Ab. Immunoreactive bands were visualized by enhanced chemiluminescence (Amersham, Arlington Heights, IL).

### The effects of EDTA and sheddase inhibitors on PSGL-1 and L-selectin down-regulation

To examine whether PSGL-1 down-regulation occurred via cleavage by known sheddases, isolated human neutrophils were incubated for 5 min at 37°C with various classes of protease inhibitors and then stimulated with  $10^{-8}$  M PAF for 5 min. Surface expression of PSGL-1 and L-selectin were then examined via indirect immunofluorescence and flow cytometry as described above. Particular emphasis was placed on examining known inhibitors of L-selectin shedding in an attempt to determine whether there was a shared mechanism for L-selectin shedding and PSGL-1 down-regulation. The following inhibitors were examined: 1) metal chelators, 2.5 mM and 14.3 mM EDTA and 1 mM phenanthroline; 2) matrix metalloproteinase inhibitors, 10 mM batimastat and 10 mM marimastat (22); 3) other metalloprotease inhibitors, 500 nM captopril, 100 nM phosphoramidon, and 100 nM thiorphan; 4) serine protease inhibitors, 10 µg/ml leupeptin and 100 µg/ml trasyolol; and 5) cysteine protease inhibitors, 1 mM iodoacetamide and 1 mM mercaptoethanol. Many inhibitors were examined in combination, as well as independently, with no further inhibitory effects. Batimastat and marimastat were synthesized as previously described (22), whereas other inhibitors were obtained from the following suppliers: EDTA and trasyolol from Sigma; captopril and thiorphan from R&D Systems (Minneapolis, MN); and phenanthroline, phosphoramidon, leupeptin, iodoacetamide, and mercaptoethanol from Calbiochem (San Diego, CA).

### Neutrophil adhesion to P-selectin-coated microwells under static conditions

Recombinant soluble P-selectin was purchased from R&D Systems. Ninety-six well microtiter plates (Nunc, Naperville, IL) were coated for 16–20 h at 4°C with 50 µl/well of PBS (containing 1 mM  $\text{Ca}^{2+}$  and  $\text{Mg}^{2+}$ ) alone

or containing 5  $\mu\text{g/ml}$  of recombinant P-selectin. Subsequently, wells were washed and preblocked for at least 2 h with PBS containing 10 mg/ml BSA, then washed with PBS. Wells were then incubated with 90  $\mu\text{l}$  PBS alone, the anti-P-selectin mAb G1 (25  $\mu\text{g/ml}$  F(ab')<sub>2</sub> in 90  $\mu\text{l}$  PBS), or the nonblocking mAb S12 (25  $\mu\text{g/ml}$  F(ab')<sub>2</sub> in 90  $\mu\text{l}$  PBS; generously provided by Centocor, Malvern, PA) for 30 min at 37°C. Isolated neutrophils were divided into five equal aliquots of  $5 \times 10^6$  cells, suspended in PBS containing 1 mM Ca<sup>2+</sup> and Mg<sup>2+</sup>, and incubated at 37°C for 10 min in the presence or absence of  $10^{-8}$ – $10^{-6}$  M PAF or 10 ng/ml PMA as described for the flow cytometry experiments. Following stimulation, a portion of each cell aliquot was reserved for flow cytometric analysis of PSGL-1 expression, whereas the remainder of the cells were used in the adhesion assay. For the adhesion assay, aliquots ( $2.5 \times 10^5$  in 10  $\mu\text{l}$  of PBS at 4°C) of unstimulated, or PAF- or PMA-stimulated neutrophils were added in triplicate to the P-selectin-adsorbed wells in the absence or presence of the P-selectin mAb, and incubated under static conditions for 30 min at 4°C. Nonadherent cells were removed by aspiration and washing, and adherent cells were fixed with 1% paraformaldehyde in PBS. Cells per high powered field were counted in five different fields by a blinded observer.

#### Neutrophil rolling and adhesion under physiological flow

Rolling and adhesion under physiological flow was determined essentially as described previously with minor modifications (23). The assembled parallel-plate flow assay system consists of the following: 1) a Plexiglas flow chamber (Glycotech, Rockville, MD) with inlet/outlet ports, a vacuum line, and a silicone gasket; 2) a Nikon TMS-F inverted phase-contrast microscope with video capacity (Image Systems, Columbia, MD); 3) a high resolution CCD camera (Hamamatsu, Ichinocho, Japan); 4) a black and white high resolution monitor; 5) a videocassette recorder (Sony, Park Ridge, NJ); and 6) a Harvard infuse/withdrawal syringe pump (Harvard Apparatus, South Natick, MA). Before assemblage, the flow chamber was filled with media and all air was removed from the system. The flow chamber was then inverted with the gasket in place and media were placed on the flow path. The 35 mm plate (i.e., coated with immobilized P-selectin) was then placed on top of the chamber and a vacuum was created. Once assembled, the chamber and plate were placed on the microscope stage and the flow of neutrophils was initiated by the syringe pump attached to the outlet port so that cells were drawn through the chamber at a constant flow. To examine PSGL-1-mediated interactions of unstimulated and PAF- or PMA-stimulated neutrophils with P-selectin under conditions of flow, a demarcated area of a 35 mm polystyrene culture dish was preadsorbed with 5  $\mu\text{g/ml}$  P-selectin and preblocked with BSA as described for the static adhesion assay. Unstimulated,  $10^{-8}$  M PAF-stimulated and 10 ng/ml PMA-stimulated (each for 10 min at 37°C) neutrophils were suspended in RPMI 1640 at a concentration of  $1 \times 10^6$  cells/ml and maintained at 4°C until initiation of the experiment, which was performed at room temperature. In some experiments, isolated neutrophils were incubated with the PSGL-1 function-blocking mAb PL-1 (10  $\mu\text{g/ml}$ ) or the nonfunction-blocking mAb PL-2 (10  $\mu\text{g/ml}$ ) in PBS-BSA for 30 min at 4°C. Neutrophil rolling and adhesion were determined at a shear force of 1 dyn/cm<sup>2</sup>. Video recordings were made in 10 different fields over 1–2 min, and leukocyte interactions were quantified off-line by video playback. The total number of interacting cells (rolling and adherent) were counted per field and the data are expressed as the number of cells/field. Within each experiment all conditions were examined in duplicate or triplicate. An aliquot of unstimulated and stimulated neutrophils was reserved in each experiment for flow cytometric analysis of PSGL-1 expression to correlate PSGL-1 expression with adhesive function.

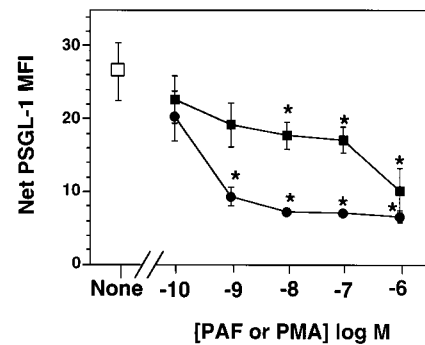
#### Data analysis

All data are presented as mean  $\pm$  SEM. Data were compared by ANOVA using posthoc analysis with Fisher's corrected *t* test. Probabilities of 0.05 or less were considered statistically significant.

## Results

#### Stimulation of human neutrophils decreases surface expression of PSGL-1

Isolated human neutrophils were stimulated with increasing concentrations of PAF or PMA for 10 min at 37°C and surface expression of PSGL-1 was examined via indirect immunofluorescence flow cytometry using mAb PL-1 and PL-2. Fig. 1 shows MFI staining with mAb PL-1 at baseline and following neutrophil stimulation. Net PSGL-1 MFI for unstimulated neutrophils was

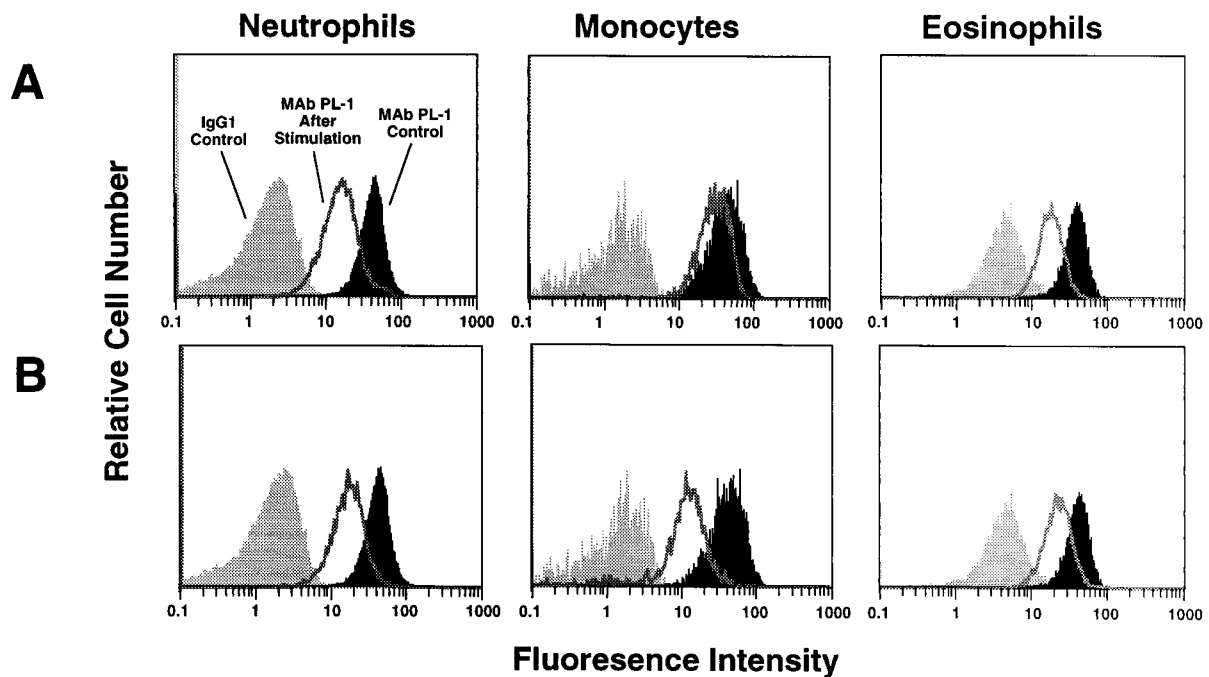


**FIGURE 1.** Neutrophil stimulation decreases surface expression of PSGL-1. Isolated human neutrophils were stimulated with the indicated concentrations of PAF or PMA for 10 min at 37°C and surface expression of PSGL-1 was examined via indirect immunofluorescence and flow cytometry using mAb PL-1. Data are shown as net MFI for PSGL-1. Stimulation with PAF (■) or PMA (●) resulted in concentration-dependent decreases in labeling for PSGL-1 compared with no stimulation (□). \*, Values that are significantly ( $p < 0.05$ ) different from the control value ( $n = 3$ ).

$26.4 \pm 4.0$  ( $n = 6$ ). Incubation of neutrophils with PAF or PMA resulted in concentration-dependent decreases in MFI for PSGL-1 (Fig. 1). Neutrophil stimulation with PMA resulted in significant decreases in MFI for PSGL-1 at concentrations between  $10^{-9}$  M and  $10^{-6}$  M. PMA at a concentration of  $10^{-6}$  M resulted in ~75% reduction in surface expression of PSGL-1. In the case of PAF, decreases in MFI for PSGL-1 were evident at concentrations as low as  $10^{-9}$  M and reached statistical significance at  $10^{-8}$ – $10^{-6}$  M. The highest concentration of PAF  $10^{-6}$  M resulted in an ~60% reduction in surface expression of PSGL-1. Similar results were obtained in experiments in which mAb PL-2 was used to stain for PSGL-1 expression (data not shown). As expected, PAF and PMA at a concentration of  $10^{-6}$  M resulted in >90% L-selectin shedding (data not shown).

#### Surface expression of PSGL-1 on human monocytes and eosinophils is also decreased following stimulation

To determine whether the decrease in surface expression of PSGL-1 following stimulation with PAF and PMA was unique to neutrophils or was shared by other leukocyte subtypes, surface expression of PSGL-1 was examined on human monocytes and eosinophils at baseline and following incubation with PAF and PMA. At baseline, both monocytes and eosinophils were found to have significant levels of PSGL-1 on their surface. Fig. 2 shows representative histograms for neutrophil, monocyte, and eosinophil staining with mAb PL-1 and with the isotype-matched control IgG1 before and after stimulation with  $10^{-6}$  M PAF (*top panel*) and 10 ng/ml or  $1.6 \times 10^{-8}$  M PMA (*bottom panel*). Consistent with previous reports (8, 24), monocytes and eosinophils had about twice as much PSGL-1 on their surface at baseline than neutrophils (Fig. 2). Similar to observations with neutrophils, stimulation of monocytes and eosinophils also resulted in decreased surface expression of PSGL-1. Incubation of both monocytes and eosinophils with PMA resulted in >50% reduction in PSGL-1 expression, whereas PAF was less effective in reducing surface expression of PSGL-1 on monocytes versus eosinophils. Again, similar results were observed when mAb PL-2 was used (data not shown). For all



**FIGURE 2.** Activation-induced changes in expression of PSGL-1 on neutrophils, monocytes and eosinophils. Decreases in PSGL-1 expression following cellular activation with  $10^{-6}$  M PAF (A) and 10 ng/ml PMA (B) were seen with human monocytes and eosinophils, as well as neutrophils. Representative histograms are shown for binding of the PSGL-1 Ab PL-1 under control conditions (black-filled histograms) and under stimulated conditions (gray-line histograms). Gray-filled histograms show labeling with the IgG1 control Ab, which remained the same in both stimulated and unstimulated cells. Histograms are representative of three independent experiments with similar results.

three cell types, the shift in PSGL-1 expression observed following cell stimulation was consistently unimodal.

#### *PSGL-1 is released from the neutrophil surface following activation with PAF*

To determine whether the reduction in neutrophil surface expression of PSGL-1 following stimulation was due to PSGL-1 release into the supernatant or from reinternalization or masking of the Ab binding site, a series of experiments was performed in which PSGL-1 was immunoprecipitated from cell lysates and supernatants of unstimulated and PAF-stimulated neutrophils, and examined via Western blot analysis (Fig. 3). *Lane 1* shows PSGL-1 immunoprecipitated from unstimulated neutrophil lysates. Similar to previous reports (8) using neutrophil extracts, two separate bands of ~120 and 160 kDa were observed in all experiments, even under reducing conditions. These 120- and 160-kDa bands were observed in both unstimulated and stimulated neutrophil lysates (*lanes 1* and *3*, respectively). No detectable PSGL-1 was immunoprecipitated from the supernatant of unstimulated neutrophils (*lane 2*). However, following neutrophil stimulation, there was a reduction in the amount of PSGL-1 immunoprecipitated from the whole cell lysates (*lane 3* compared with *lane 1*), which coincided with the appearance of a detectable PSGL-1 band in the supernatant from the activated cells (*lane 4*). A similar pattern of PSGL-1 monomer was found in supernatants of PAF-activated neutrophils even under nonreducing conditions (Fig. 3B). In both Figs. 3A and 3B, contrary to the two bands seen in the lanes from the cell lysates, only a single band around 120 kDa was immunoprecipitated from the supernatant of activated cells. When the immunoprecipitates were run on a lower percentage polyacrylamide gel (6%) the supernatant fragment was found to run at a molecular mass of ~97 kDa ( $n = 1$ , data not shown). This suggests that

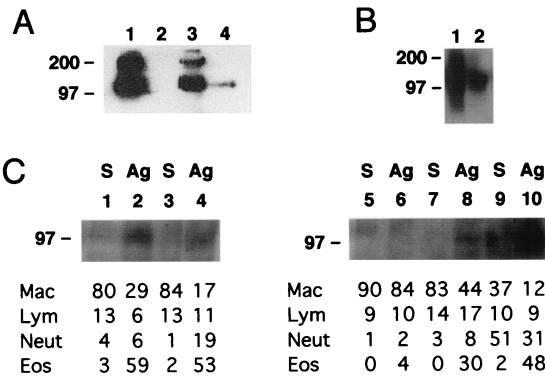
PSGL-1 is being shed, with the cleavage site located above the disulfide linkage.

#### *Soluble PSGL-1 is detected in BAL fluids from challenged allergic asthmatic subjects*

Soluble forms of many adhesion molecules can be detected in biological fluids by ELISA or Western blotting. To determine whether soluble PSGL-1 is generated *in vivo*, we performed immunoprecipitation and Western blot analysis of BAL fluids obtained 20 h after segmental bronchoscopic challenge with either saline or diluted ragweed-allergen extracts in appropriate allergic asthmatic subjects. As shown in Fig. 3C, saline challenge and BAL led to the recovery of >80% alveolar macrophages in four of five subjects (*lanes 1, 3, 5* and *7*) with a similar pattern seen in one subject after allergen challenge (*lane 6*). These conditions, in which minimal influx of granulocytes occurred, was associated with little or no detectable monomeric soluble PSGL-1 (100–120 kDa). In contrast, one saline BAL fluid (*lane 9*) and four of five allergen BAL fluids (*lanes 2, 4, 8, and 10*) were characterized by brisk influx of eosinophils, neutrophils, or both. In these samples, prominent bands of ~100–120 kDa were readily detectable. None of the 10 BAL samples yielded bands of higher or lower molecular mass (data not shown), suggesting that neither PSGL-1 homodimer nor fragments are detectable under these conditions *in vivo*.

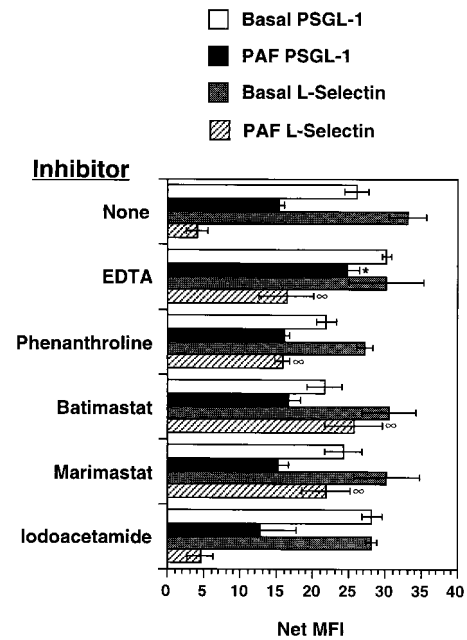
#### *Effects of EDTA and sheddase inhibitors on PSGL-1 and L-selectin down-regulation*

The shedding of L-selectin from the surface of stimulated leukocytes via the activation of a metalloprotease has been well documented (11–13). To determine whether the mechanism of PSGL-1



**FIGURE 3.** A, PSGL-1 detection in the supernatant of activated neutrophils. Western blot (representative of  $n = 3$ ) for PSGL-1 following immunoprecipitation from whole cell lysates and cell supernatants of unactivated and PAF-activated neutrophils. Lane 1, PSGL-1 immunoprecipitated from unstimulated neutrophil lysates. Lane 2, No detectable PSGL-1 was immunoprecipitated from the supernatant of unstimulated neutrophils. Following neutrophil stimulation ( $10^{-6}$  M PAF) there was a reduction in the amount of PSGL-1 immunoprecipitated from the whole cell lysates (lane 3), which coincided with the appearance of a single PSGL-1 band in the supernatant from the activated cells (lane 4). B, PSGL-1 detection in the supernatant of activated neutrophils. Lanes 1 and 2, Same conditions as lanes 3 and 4 in Fig. 3A except that in this separate experiment, lysates and supernatant were run under nonreducing conditions. Note that as in Fig. 3A, the supernatant only contains a single PSGL-1 band. C, PSGL-1 detection in BAL fluids of allergic asthmatic subjects 20 h following bronchoscopic saline (S) or ragweed-allergen (Ag) challenge. Methods were the same as in A. Samples are paired for each of five subjects and the cytology, in percent, of each BAL fluid (Mac, macrophages; Lym, lymphocytes; Neut, neutrophils; and Eos, eosinophils) is listed beneath each lane.

release from the surface of neutrophils involved shedding was brought about by known metalloproteases or other sheddases, a series of experiments were performed in which the effect of various sheddase inhibitors on the expression of PSGL-1 and L-selectin was examined. In these experiments, aliquots of isolated human neutrophils were preincubated for 5 min at  $37^{\circ}\text{C}$  with selected inhibitors and then left unstimulated or were stimulated with  $10^{-8}$  M PAF for 5 min. Surface expression of PSGL-1 and L-selectin on PAF-stimulated cells was then examined via indirect immunofluorescence and flow cytometry, and compared with values on unstimulated cells incubated in the presence of sheddase inhibitors, as some inhibitors did alter basal PSGL-1 expression. Results from these experiments are shown in Fig. 4. In untreated cells,  $10^{-8}$  M PAF resulted in about a 50% reduction in surface expression of PSGL-1 and a 90% reduction in L-selectin expression. When these cells were stimulated with PAF in the presence of EDTA, both PSGL-1 and L-selectin down-regulation was significantly inhibited, indicating the need for divalent cations in these processes. However, in the presence of the metalloproteinase inhibitors phenanthroline, batimastat, and marimastat, which were demonstrated to inhibit L-selectin shedding, PSGL-1 release in response to PAF was not inhibited. Likewise, reduction of PSGL-1 does not appear to be due to serine, cysteine, or other metalloproteases as PSGL-1 down-regulation was not inhibited by protease inhibitors from each of these classes (data not shown). These data indicate that PSGL-1 release from the cell surface occurs via a mechanism other than that known for L-selectin shedding, and suggests that PSGL-1 may either be shed by an as yet unidentified sheddase or other divalent cation-dependent process

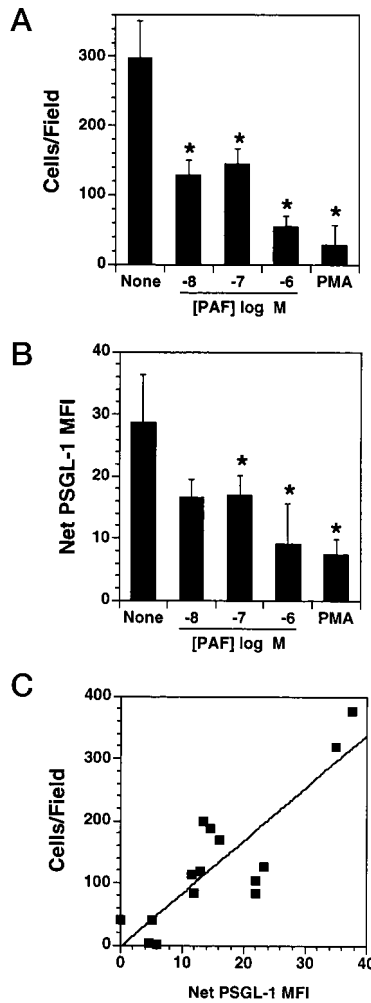


**FIGURE 4.** PSGL-1 and L-selectin are released from the neutrophil surface by different mechanisms. Aliquots of isolated human neutrophils were preincubated with the indicated inhibitor or no agent (None), and then left unstimulated (Basal) or were stimulated with  $10^{-8}$  M PAF. PAF reduced surface expression of both PSGL-1 and L-selectin. The PAF-induced down-regulation of PSGL-1 was significantly (\*,  $p < 0.05$ ) inhibited only in the presence of EDTA. In contrast, EDTA, phenanthroline, batimastat, and marimastat each significantly ( $\infty$ ,  $p < 0.01$ ) inhibited L-selectin shedding. Iodoacetamide did not alter down-regulation of either PSGL-1 or L-selectin. Values represent mean  $\pm$  SEM for net MFI;  $n = 3-5$ .

#### Decreased surface expression of PSGL-1 on neutrophils correlates with a decrease in neutrophil adhesion to P-selectin under both static and dynamic conditions

To determine whether the reductions in surface expression of PSGL-1 on human neutrophils significantly affected their ability to interact with P-selectin, adhesion of unstimulated and stimulated neutrophils to immobilized P-selectin was examined under static and flow conditions. Fig. 5 shows the results for experiments examining the effect of neutrophil activation on adhesion to P-selectin under static conditions. Unstimulated neutrophils adhered avidly to immobilized P-selectin ( $298 \pm 52$  cells/field; Fig. 5A), while not adhering to immobilized BSA ( $6 \pm 6$  cells/field). Preincubation of P-selectin-coated wells with the P-selectin function-blocking mAb G1 significantly inhibited adhesion of neutrophils to P-selectin ( $8 \pm 5$  cells/field). Preincubation of neutrophils with  $10^{-8}$ – $10^{-6}$  M PAF or 10 ng/ml PMA resulted in a decrease in neutrophil adhesion to P-selectin (Fig. 5A). Stimulation of neutrophils with PAF or PMA did not significantly alter adhesion to BSA, and residual adhesion to P-selectin was completely inhibited by mAb G1 (data not shown). Fig. 5B shows the net MFI for the stimulated and unstimulated neutrophils used in Fig. 5A. As seen in Fig. 5C, under static conditions there is a strong correlation ( $r = 0.85$ ) between surface expression of PSGL-1 and adhesion to P-selectin using unstimulated and stimulated neutrophils.

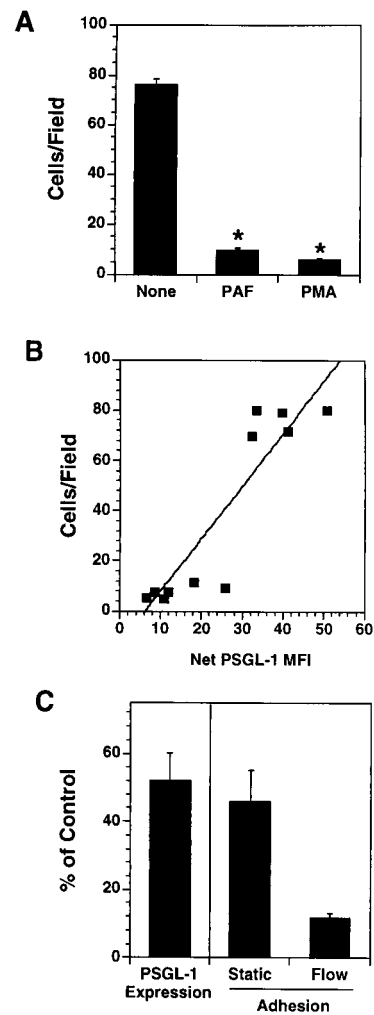
To determine whether PSGL-1 down-regulation would affect neutrophil interactions with immobilized P-selectin under flow conditions, adhesion experiments were conducted using the parallel-plate flow chamber. Under control conditions, unstimulated neutrophils rolled on and adhered to immobilized P-selectin ( $76 \pm 2$  cells/field; Fig. 6A). Preincubation of neutrophils with the



**FIGURE 5.** Static adhesion of neutrophils to immobilized P-selectin and PSGL-1 expression are both decreased after treatment with  $10^{-8}$ – $10^{-6}$  M PAF or 10 ng/ml PMA for 10 min at 37°C ( $n = 3$ ). Following stimulation, cells were washed and divided into two aliquots. One aliquot was used to assess adhesion to immobilized P-selectin under static conditions (A) and the other was used to determine PSGL-1 expression via flow cytometry (B). Activation of neutrophils with PAF or PMA resulted in significant ( $p < 0.05$ ) reductions in PSGL-1 expression that resulted in a significant ( $*, p < 0.01$ ) reduction in neutrophil adhesion to P-selectin. There is a significant correlation ( $r = 0.85, p < 0.001$ ) between net MFI for PSGL-1 and adhesion to P-selectin (C).

PSGL-1 function-blocking mAb PL-1 significantly inhibited the adhesion of neutrophils to P-selectin ( $7 \pm 4$  cells/field), whereas the nonblocking Ab PL-2 did not ( $92 \pm 7$  cells/field). Similar to static conditions, significant inhibition of neutrophil interaction with P-selectin was seen under flow conditions following neutrophil stimulation with  $10^{-8}$  M PAF and 10 ng/ml PMA ( $9 \pm 1$  and  $6 \pm 0.1$  cells/field, respectively; Fig. 6A). Again, a strong correlation ( $r = 0.91$ ) between surface expression of PSGL-1 and neutrophil adhesion to P-selectin was observed (Fig. 6B), although in these experiments the data appear bimodal or steeply sigmoidal.

Although neutrophil activation and PSGL-1 down-regulation were associated with significantly decreased neutrophil interaction with P-selectin under both static and dynamic conditions, a closer examination of the data reveals that there are significant differences between changes in static and dynamic interactions, particularly when lower concentrations of stimulant are used. This is shown in Fig. 6C, where the data for PSGL-1 expression, static



**FIGURE 6.** Adhesion of neutrophils to immobilized P-selectin under flow conditions is decreased following PSGL-1 release by PAF. Isolated human neutrophils were stimulated with  $10^{-8}$  M PAF ( $n = 3$ ) or 10 ng/ml PMA ( $n = 3$ ) for 10 min at 37°C. Following stimulation, cells were washed and divided into two aliquots. One aliquot was used to assess adhesion to immobilized P-selectin under flow conditions (A) and the other was used to determine PSGL-1 expression. A, Activation of neutrophils with PAF or PMA resulted in a significant ( $*, p < 0.01$ ) reduction in neutrophil adhesion to P-selectin. B, The relationship between reduction in PSGL-1 expression and flow adhesion to P-selectin ( $r = 0.91$ ). C, Values for PSGL-1 expression, static adhesion, and flow adhesion after stimulation with  $10^{-8}$  M PAF quantified as percent of control. Neutrophil stimulation with  $10^{-8}$  M PAF results in about a 50% reduction in PSGL-1 expression and a 50% reduction in static adhesion to P-selectin. Under flow conditions, the same 50% reduction in PSGL-1 expression resulted in  $<80\%$  reduction in neutrophil rolling and adhesion.

adhesion, and flow adhesion are examined as a percent of control for a single concentration of  $10^{-8}$  M PAF. It appears that the changes in PSGL-1 expression induced by PAF have a greater effect on adhesion of neutrophils to P-selectin under flow vs static conditions. After stimulation of neutrophils with  $10^{-8}$  M PAF, surface expression of PSGL-1 is reduced to  $52 \pm 8\%$  of the control. This nearly 50% reduction in PSGL-1 expression is similar to the  $\sim 50\%$  reduction of neutrophil adhesion to P-selectin under static conditions. However, this same 50% reduction in PSGL-1 expression induced by  $10^{-8}$  M PAF resulted in a  $\sim 90\%$  reduction in adhesion of neutrophils to P-selectin under flow conditions. Thus, it appears that even modest reductions in surface expression

of PSGL-1 on circulating neutrophils may have profound effects on the ability of these cells to interact with P-selectin under physiologic flow conditions.

## Discussion

The primary function of leukocyte and endothelial adhesion molecules is to mediate adhesive interactions between leukocytes and endothelial cells during the leukocyte recruitment response. However, a more recent and broader understanding of adhesion molecule function has begun to highlight another aspect of the adhesion event, de-adhesion, as an equally important aspect of leukocyte recruitment. Nowhere is this more evident than in the study of the selectins. The selectins interact with their respective carbohydrate-containing counterligands in a series of rapid adhesion and de-adhesion events mediated by the formation of numerous weak, reversible bonds. This cycle of adhesion and de-adhesion in the presence of blood flow-generated shear forces results in the process of leukocyte rolling along the endothelial cell surface. These events are in contrast to integrin-Ig interactions, which are more stable and allow for stationary (i.e., firm) adhesion of leukocytes to the endothelial surface even under shear conditions (2, 25). Another example of an important de-adhesive function involving the selectins is L-selectin shedding. Surface-expressed L-selectin mediates leukocyte rolling along the vascular endothelium. However, the transition from leukocyte rolling to firm adhesion is facilitated by rapid proteolytic cleavage of L-selectin from the leukocyte surface, a de-adhesive event that allows for the transition from weak, selectin-mediated interactions to firm attachments via the  $\beta_2$  integrins and ICAM-1 (2, 26).

Data presented in this manuscript indicate that, similar to L-selectin, removal of the selectin ligand PSGL-1 from the leukocyte surface may be another selectin-associated de-adhesive event. In this paper we demonstrate that activation of human neutrophils, eosinophils, and monocytes with either PAF or PMA results in a rapid and significant decrease in surface expression of PSGL-1, thereby decreasing PSGL-1-mediated leukocyte interactions with P-selectin. PSGL-1 was detected by immunoprecipitation in the supernatants of PAF-activated neutrophils and in BAL fluids from allergic subjects undergoing endoscopic intrabronchial challenge, suggesting that decreased surface expression of PSGL-1 was occurring as the result of PSGL-1 release and not via internalization. The mechanism of PSGL-1 release from the cell surface appears to be different from L-selectin, as inhibitors of L-selectin shedding (other than EDTA) did not affect PSGL-1 down-regulation. In both static and dynamic adhesion assays, the number of neutrophils that adhered to immobilized P-selectin was significantly correlated to the amount of surface-expressed PSGL-1, indicating that removal of PSGL-1 from the cell surface may be a mechanism by which leukocyte interaction with P-selectin is modulated in the transition to integrin-mediated firm adhesion.

PSGL-1, like L-selectin, is highly expressed on virtually all leukocyte subtypes (27). The full PSGL-1 molecule consists of 402 aa, with a signal peptide (1–18), a propeptide (19–41), a selectin-binding domain (42–119), 16 decameric repeats (120–278), a disulfide-bonding region (279–318), a transmembrane domain (319–332), and a short cytoplasmic tail (333–402) (28). Functional PSGL-1 is presented as a disulfide-bonded homodimer with two 120-kDa subunits, though neutrophils have been demonstrated to also express a 160-kDa form of PSGL-1, and eosinophil-expressed PSGL-1 is also >120 kDa (8). In this paper we demonstrate that the reduction in neutrophil surface expression of PSGL-1 following stimulation was due to PSGL-1 release into the supernatant, and not due to reinternalization or the masking of the Ab binding site. This was demonstrated by successful immuno-

precipitation of PSGL-1 from supernatants of PAF-stimulated neutrophils (Fig. 3, A and B). PSGL-1 immunoprecipitated from unstimulated neutrophil lysates resulted in two separate bands of ~120 and 160 kDa under reducing conditions as previously reported (8). No detectable PSGL-1 was immunoprecipitated from the supernatant of unstimulated neutrophils. However, following neutrophil stimulation, there was a reduction in the amount of PSGL-1 immunoprecipitated from the whole cell lysates, which coincided with the appearance of a detectable PSGL-1 band in the supernatant from the activated cells. Contrary to the two bands seen in the lanes from the cell lysates, only a single band around 120 kDa was immunoprecipitated from the supernatant of activated cells. As the size of the PSGL-1 immunoprecipitated from activated neutrophil supernatants *in vitro* and in BAL fluids *in vivo* was very close in size to the full-length PSGL-1 molecule, it is difficult to determine whether PSGL-1 is being cleaved from the cell surface or released via other mechanisms. However, the inability to detect dimeric PSGL-1 in cell supernatants suggests that it may be cleaved at a site N-terminal to the disulfide linkage. Regardless, it is clear that PSGL-1 is being removed from the cell surface and released into the supernatant.

The fact that PSGL-1, similar in relative molecular mass to the full-length glycosylated molecule, is present after activation does not rule out PSGL-1 shedding, as proteolytic cleavage of L-selectin occurs at a site close to the cell surface, leaving intact a large, functional L-selectin fragment (11). Similarly, the lack of effect of inhibitors of L-selectin shedding and other sheddases may suggest that PSGL-1 is being released via a mechanism other than shedding, but does not rule out shedding as the mechanism. In these experiments, isolated human neutrophils were preincubated with batimastat or marimastat, which are synthetic hydroxamates known to inhibit  $Zn^{2+}$ -dependent matrix metalloproteinases, and then stimulated with  $10^{-8}$  M PAF. Both of these compounds significantly inhibited L-selectin shedding, but had no effect on PSGL-1 shedding. These data clearly indicate a mechanism for PSGL-1 release that is distinct from L-selectin shedding.

The data presented in this paper clearly demonstrate important functional consequences of PSGL-1 down-regulation. Neutrophil activation, and thus decreased surface expression of PSGL-1, was demonstrated to have profound effects on the ability of neutrophils to interact with P-selectin under both static and dynamic conditions. As noted earlier, two previous manuscripts (14, 15) have reported decreased neutrophil adhesion to P-selectin following stimulation with PAF or fMLP. However, both of these manuscripts proposed a different mechanism by which neutrophil activation could decrease adhesion to P-selectin. In particular, Lorrant et al. (14) reported redistribution of PSGL-1 from the tips of the microvilli to the uropod of activated polarized neutrophils following stimulation with PAF. As no decrease in the ability of neutrophils to bind fluid-phase P-selectin was detected in these studies, the authors concluded that redistribution of PSGL-1 on the neutrophil surface, and not PSGL-1 removal from the cell surface or reinternalization, accounted for all of the decrease in neutrophil interaction with P-selectin following neutrophil stimulation. In a later study (15) in which PSGL-1 expression was directly examined via indirect immunofluorescence and flow cytometry following neutrophil stimulation with fMLP, the authors did note that coincident with the redistribution of PSGL-1 on the neutrophil surface, there was also a 26% reduction in staining for total surface expression of PSGL-1. Despite this reduction in surface staining for PSGL-1, the authors concluded that redistribution of PSGL-1 and decreased surface expression were the primary mechanisms by which neutrophil activation decreased interaction with P-selectin.

Though both of these studies provide clear and convincing evidence that PSGL-1 is redistributed on the neutrophil surface following stimulation, the data presented in this paper expand on these previous studies to demonstrate that PSGL-1 is also released from the surface of PAF- and PMA-activated human leukocytes, and that there is a strong correlation between decreased surface expression of neutrophil PSGL-1 and decreased neutrophil adhesion to P-selectin.

Redistribution of PSGL-1 on the surface of activated leukocytes may provide an explanation for the differences between static and flow adhesion observed following neutrophil stimulation. As shown in Fig. 6, moderate decreases in surface expression of PSGL-1 induced by PAF had a more profound effect on neutrophil interaction with P-selectin under conditions of flow than under static conditions. Under static conditions, the ~50% reduction in PSGL-1 expression induced by  $10^{-8}$  M PAF resulted in about a 50% reduction in adhesion to P-selectin. However, under flow conditions, a similar reduction in PSGL-1 expression resulted in an ~90% reduction in the ability of neutrophils to interact with P-selectin. This reduction in neutrophil rolling was equivalent to the reductions seen when PSGL-1 function-blocking mAb PL-1 was used. Thus, under conditions of flow, redistribution of PSGL-1 away from the microvilli, where it would be most accessible for P-selectin interactions, may account for the dramatically reduced interaction of the remaining PSGL-1 with P-selectin, whereas the impact of redistribution may not be as significant in the static adhesion assay where neutrophils were allowed to settle on and adhere to P-selectin.

Another potential explanation for the dramatic decrease in neutrophil rolling on P-selectin after stimulation may be the need for a critical density of PSGL-1 on the neutrophil surface to support leukocyte rolling. In the case of P-selectin itself, *in vitro* studies have demonstrated that altering the density of P-selectin on a membrane surface can alter the ability of leukocytes to roll on and adhere to this molecule. In these studies P-selectin-mediated interactions were determined to be optimal at a P-selectin density of between 50 and 100 P-selectin molecules/ $\mu\text{m}^2$  (23, 30). These same types of experiments have not been performed for PSGL-1; therefore, it remains to be seen whether PSGL-1 must be present at levels exceeding a specific density to support rolling. In either event, it is clear that at physiological shear almost complete inhibition of PSGL-1-mediated leukocyte rolling is possible in the absence of complete loss of PSGL-1 surface expression.

Although the data presented in this paper demonstrate *in vitro* alterations in PSGL-1 expression, the *in vivo* functional significance of these alterations on leukocyte recruitment remain to be determined. It is possible that activation of circulating leukocytes would decrease P-selectin-PSGL-1-mediated interactions under conditions of flow in the same way that L-selectin interactions are affected (31), but much additional work will be required to determine whether PSGL-1 release after the initiation of leukocyte rolling, like L-selectin shedding, facilitates the transition to  $\beta_2$  integrin-mediated adhesion. This scenario seems plausible, as recent data have demonstrated that Ab cross-linking of PSGL-1 activates and up-regulates the  $\beta_2$  integrin CD11b/CD18 on mouse neutrophils, thereby increasing neutrophil adhesion to ICAM-1 (32). This is also supported by earlier work demonstrating that PAF, one of the substances found to alter PSGL-1 expression in these studies, is coexpressed with P-selectin on the surface of stimulated human umbilical vein endothelial cells, and that there is cooperativity between P-selectin and PAF that facilitates neutrophil firm adhesion (33, 34). Cross-linking of PSGL-1 has also been demonstrated to induce tyrosine phosphorylation and IL-8 production (35), as well as increasing production of reactive oxygen intermediates in neu-

trophils (32). All of these functions, along with induction of  $\beta_2$  integrin expression, are similar to the events induced by binding of L-selectin.

Also unknown is whether PSGL-1 expression is altered during leukocyte rolling, as has been speculated for L-selectin. Using a hydroxamic acid-based protease inhibitor, Walcheck et al. (36) examined the effects of inhibiting L-selectin shedding on neutrophil rolling in an *in vitro* flow-adhesion assay. Surprisingly, inhibition of neutrophil L-selectin shedding resulted in decreased neutrophil rolling velocities and increased neutrophil accumulation. These authors concluded that L-selectin proteolysis during neutrophil rolling is a de-adhesive event, which serves to decrease leukocyte accumulation at sites of inflammation (36). The effects, if any, of PSGL-1 release on neutrophil rolling velocities on P-selectin, and thus the propensity of leukocytes to accumulate or adhere, remain to be determined. This is of particular interest as P-selectin and L-selectin have been demonstrated to mediate leukocyte rolling at very different velocities (37, 38). In *in vivo* intravital microscopy, P-selectin has been found to mediate much slower leukocyte rolling than L-selectin, and this slower P-selectin-mediated rolling was found to be more effective in facilitating leukocyte adhesion (38). To date, it has been speculated that the differences in P- and L-selectin-mediated leukocyte rolling velocities were most likely due to differing tensile strengths between these selectins and their ligands (37, 39). However, in light of these new data, one could speculate that these differences are related to differences in the kinetics or regulation of L-selectin and PSGL-1 release.

Finally, based on our current understanding of the role of PSGL-1, the regulation of PSGL-1 expression may have far reaching consequences *in vivo*, as PSGL-1 is believed to be the only high-affinity ligand for P-selectin on circulating leukocytes (7, 8). Numerous *in vivo* animal studies using P-selectin or PSGL-1 function-blocking Abs have demonstrated that PSGL-1 plays a crucial role in leukocyte recruitment in response to a variety of inflammatory stimuli (7). Thus, the regulation of PSGL-1 expression either in the circulation or during leukocyte migration may greatly impact P-selectin-mediated leukocyte-endothelial interactions. Likewise, PSGL-1 expression may also impact leukocyte-platelet interactions given P-selectin is also up-regulated on activated platelets. PSGL-1 has also been demonstrated to interact with L-selectin to facilitate leukocyte-leukocyte interactions, and can also interact with E-selectin, thus affecting leukocyte-endothelial interactions independent of P-selectin (7).

In summary, the overall conclusion from the current data is that leukocyte activation results in decreased surface expression of PSGL-1 and decreased leukocyte adhesion to P-selectin under both static and dynamic conditions. The decrease in PSGL-1 surface-expression occurs along with the appearance of PSGL-1 in the supernatants. It is unclear at this time whether PSGL-1 release is the result of a novel divalent cation-dependent sheddase or some other mechanism. Finally, though much remains to be determined about the *in vivo* regulation of PSGL-1 expression, these findings indicate an entirely novel means by which leukocyte-leukocyte, leukocyte-platelet, and leukocyte-endothelial interactions, and thus many facets of the inflammatory response, may be regulated.

## Acknowledgments

We thank Dr. Mark Liu for providing BAL fluids, and Bonnie Hebden for assistance in the preparation of this manuscript.

## References

1. Carlos, T. M., and J. M. Harlan. 1994. Leukocyte-endothelial adhesion molecules. *Blood* 84:2068.



2. Tedder, T. F., D. A. Steeber, A. Chen, and P. Engel. 1995. The selectins: vascular adhesion molecules. *FASEB J.* 9:866.
3. Bevilacqua, M. P., and R. M. Nelson. 1993. Selectins. *J. Clin. Invest.* 91:379.
4. Varki, A. 1997. Selectin ligands: will the real ones please stand up? *J. Clin. Invest.* 99:158.
5. Bochner, B. S. 1998. Cellular adhesion in inflammation. In *Allergy Principles and Practice*, 5th Ed. J. E. Middleton, C. Reed, E. Ellis, N. F. Adkinson, J. Yunginger, and W. Busse, eds. Mosby, St. Louis, p. 94.
6. Moore, K. L., N. L. Stults, S. Diaz, D. F. Smith, R. D. Cummings, A. Varki, and R. P. McEver. 1992. Identification of a specific glycoprotein ligand for P-selectin (CD62) on myeloid cells. *J. Cell Biol.* 118:445.
7. McEver, R. P., and R. D. Cummings. 1997. Role of PSGL-1 binding to selectins in leukocyte recruitment. *J. Clin. Invest.* 100:485.
8. Moore, K. L., K. D. Patel, R. E. Bruehl, L. Fugang, D. A. Johnson, H. S. Lichenstein, R. D. Cummings, D. F. Bainton, and R. P. McEver. 1995. P-selectin glycoprotein ligand-1 mediates rolling of human neutrophils on P-selectin. *J. Cell Biol.* 128:661.
9. Taylor, M. L., M. Brummet, S. A. Sterbinsky, K. Miura, and B. S. Bochner. 1999. Expression and function of P-selectin glycoprotein ligand-1 (PSGL-1) on human basophils. *FASEB J.* 13:A326.
10. Griffin, J. D., O. Spertini, T. J. Ernst, M. P. Belvin, H. B. Levine, Y. Kanakura, and T. F. Tedder. 1990. Granulocyte-macrophage colony-stimulating factor and other cytokines regulate surface expression of the leukocyte adhesion molecule-1 on human neutrophils, monocytes, and their precursors. *J. Immunol.* 145:576.
11. Kahn, J., R. H. Ingraham, F. Shirley, G. I. Migaki, and T. K. Kishimoto. 1994. Membrane proximal cleavage of L-selectin: identification of the cleavage site and a 6-kD transmembrane peptide fragment of L-selectin. *J. Cell Biol.* 125:461.
12. Feehan, C., K. Darlak, J. Kahn, B. Walcheck, A. F. Spatola, and T. K. Kishimoto. 1996. Shedding of the lymphocyte L-selectin adhesion molecule is inhibited by a hydroxamic acid-based protease inhibitor. *J. Biol. Chem.* 271:7019.
13. Borland, G., G. Murphy, and A. Ager. 1999. Tissue inhibitor of metalloproteinases-3 inhibits shedding of L-selectin from leukocytes. *J. Biol. Chem.* 274:2810.
14. Lorant, D. E., R. P. McEver, T. M. McIntyre, K. L. Moore, S. M. Prescott, and G. A. Zimmerman. 1995. Activation of polymorphonuclear leukocytes reduces their adhesion to P-selectin and causes redistribution of ligands for P-selectin on their surfaces. *J. Clin. Invest.* 96:171.
15. Bruehl, R. E., K. L. Moore, D. E. Lorant, N. Borregaard, G. A. Zimmerman, R. P. McEver, and D. F. Bainton. 1997. Leukocyte activation induces surface redistribution of P-selectin glycoprotein ligand-1. *J. Leukocyte Biol.* 61:489.
16. Schleimer, R. P., and B. K. Rutledge. 1986. Cultured human vascular endothelial cells acquire adhesiveness for leukocytes following stimulation with interleukin-1, endotoxin, and tumor-promoting phorbol esters. *J. Immunol.* 136:649.
17. Ebisawa, M., B. S. Bochner, S. N. Georas, and R. P. Schleimer. 1992. Eosinophil transendothelial migration induced by cytokines. I. Role of endothelial and eosinophil adhesion molecules in IL-1 $\beta$ -induced transendothelial migration. *J. Immunol.* 149:4021.
18. Hansel, T. T., I. J. M. D. Vries, T. Iff, S. Rihs, M. Wandzilak, S. Betz, K. Blaser, and C. Walker. 1991. An improved immunomagnetic procedure for the isolation of highly purified human blood eosinophils. *J. Immunol. Methods* 145:105.
19. Georas, S. N., M. C. Liu, W. Newman, W. D. Beall, B. A. Stealey, and B. S. Bochner. 1992. Altered adhesion molecule expression and endothelial activation accompany the recruitment of human granulocytes to the lung following segmental antigen challenge. *Am. J. Respir. Cell Mol. Biol.* 7:261.
20. Ulevitch, R. J., and P. S. Tobias. 1995. Receptor-dependent mechanisms of cell stimulation by bacterial endotoxin. *Annu. Rev. Immunol.* 13:437.
21. Antal-Szalmas, P., J. A. V. Strijp, A. J. L. Weersink, J. Verhoef, and K. P. M. v. Kessel. 1997. Quantification of surface CD14 on human monocytes and neutrophils. *J. Leukocyte Biol.* 61:721.
22. Bailey, S., B. Bolognese, D. R. Buckle, A. Faller, S. Jackson, P. Louis-Flamberg, M. McCord, R. J. Mayer, L. A. Marshall, and D. G. Smith. 1998. Hydroxamate-based inhibitors of low affinity IgE receptor (CD23) processing. *Bioorg. Med. Chem. Lett.* 8:23.
23. Patel, K. D., K. L. Moore, M. U. Nollert, and R. P. McEver. 1995. Neutrophils use both shared and distinct mechanisms to adhere to selectins under static and flow conditions. *J. Clin. Invest.* 96:1887.
24. Patel, K. D., and R. P. McEver. 1997. Comparison of tethering and rolling of eosinophils and neutrophils through selectins and P-selectin glycoprotein ligand-1. *J. Immunol.* 159:4555.
25. McEver, R. P. 1998. Leukocyte adhesion through selectins under flow. *The Immunologist* 6:61.
26. von Andrian, U. H., J. D. Chambers, L. M. McEvoy, R. F. Bargatze, K. E. Arfors, and E. C. Butcher. 1991. Two-step model of leukocyte endothelial cell interaction in inflammation: distinct roles for LECAM-1 and the leukocyte  $\beta_2$  integrins in vivo. *Proc. Natl. Acad. Sci. USA* 88:7538.
27. Laszik, Z., P. J. Jansen, R. D. Cummings, T. F. Tedder, R. P. McEver, and K. L. Moore. 1996. P-selectin glycoprotein ligand-1 is broadly expressed in cells of myeloid, lymphoid, and dendritic lineage and in some nonhematopoietic cells. *Blood* 88:3010.
28. Li, F., H. P. Erickson, J. A. James, K. L. Moore, R. D. Cummings, and R. P. McEver. 1996. Visualization of P-selectin glycoprotein ligand-1 as a highly extended molecule and mapping of protein epitopes for monoclonal antibodies. *J. Biol. Chem.* 271:6342.
29. Migaki, G. I., J. Kahn, and T. K. Kishimoto. 1995. Mutational analysis of the membrane-proximal cleavage site of L-selectin: relaxed sequence specificity surrounding the cleavage site. *J. Exp. Med.* 182:549.
30. Gibson, R. M., G. S. Kansas, T. F. Tedder, B. Furie, and B. C. Furie. 1995. Lectin and epidermal growth factor domains of P-selectin at physiological density are the recognition unit for leukocyte binding. *Blood* 85:151.
31. von Andrian, U. H., P. Hansell, J. D. Chambers, E. M. Berger, I. T. Filho, E. C. Butcher, and K.-E. Arfors. 1992. L-selectin function is required for  $\beta_2$ -integrin-mediated neutrophil adhesion at physiological shear rates in vivo. *Am. J. Physiol.* 263:H1034.
32. Blanks, J. E., T. Moll, R. Eytner, and D. Vestweber. 1998. Stimulation of P-selectin glycoprotein ligand-1 on mouse neutrophils activates  $\beta_2$ -integrin-mediated cell attachment to ICAM-1. *Eur. J. Immunol.* 28:433.
33. Lorant, D. E., K. D. Patel, T. M. McIntyre, R. P. McEver, S. M. Prescott, and G. A. Zimmerman. 1991. Coexpression of GMP-140 and PAF by endothelium stimulated by histamine or thrombin: juxtacrine system for adhesion and activation of neutrophils. *J. Cell Biol.* 115:223.
34. Lorant, D. E., M. K. Topham, R. E. Whatley, R. P. McEver, T. M. McIntyre, S. M. Prescott, and G. A. Zimmerman. 1993. Inflammatory roles of P-selectin. *J. Clin. Invest.* 92:559.
35. Hidari, K. I. P., A. S. Weyrich, G. A. Zimmerman, and R. P. McEver. 1997. Engagement of P-selectin glycoprotein ligand-1 enhances tyrosine phosphorylation and activates mitogen-activated protein kinases in human neutrophils. *J. Biol. Chem.* 272:28750.
36. Walcheck, B., J. Kahn, J. M. Fisher, B. B. Wang, R. S. Fisk, D. G. Payan, C. Feehan, R. Betageri, K. Darlak, A. F. Spatola, and T. K. Kishimoto. 1996. Neutrophil rolling altered by inhibition of L-selectin shedding in vitro. *Nature* 380:720.
37. Jung, U., D. C. Bullard, T. F. Tedder, and K. Ley. 1996. Velocity differences between L-selectin- and P-selectin-dependent neutrophil rolling in venules of the mouse cremaster muscle in vivo. *Am. J. Physiol.* 268:12.
38. Davenpeck, K. L., D. A. Steeber, T. F. Tedder, and B. S. Bochner. 1997. P- and L-selectin mediate distinct but overlapping functions in endotoxin-induced leukocyte-endothelial interactions in the rat mesentery. *J. Immunol.* 159:1977.
39. Alon, R., D. A. Hammer, and T. A. Springer. 1995. Lifetime of the P-selectin-carbohydrate bond and its response to tensile force in hydrodynamic flow. *Nature* 374:539.