

RESEARCH

Open Access

# Display of wasp venom allergens on the cell surface of *Saccharomyces cerevisiae*

Irina Borodina<sup>1</sup>, Bettina M Jensen<sup>2</sup>, Ib Søndergaard<sup>1</sup>, Lars K Poulsen<sup>2\*</sup>

## Abstract

**Background:** Yeast surface display is a technique, where the proteins of interest are expressed as fusions with yeast surface proteins and thus remain attached to the yeast cell wall after expression. Our purpose was to study whether allergens expressed on the cell surface of baker's yeast *Saccharomyces cerevisiae* preserve their native allergenic properties and whether the yeast native surface glycoproteins interfere with IgE binding. We chose to use the major allergens from the common wasp *Vespa vulgaris* venom: phospholipase A1, hyaluronidase and antigen 5 as the model.

**Results:** The proteins were expressed on the surface as fusions with  $\alpha$ -agglutinin complex protein AGA2. The expression was confirmed by fluorescent cytometry (FACS) after staining the cells with antibody against a C-tag attached to the C-terminal end of the allergens. Phospholipase A1 and hyaluronidase retained their enzymatic activities. Phospholipase A1 severely inhibited the growth of the yeast cells. Antigen 5 - expressing yeast cells bound IgE antibodies from wasp venom allergic patient sera but not from control sera as demonstrated by FACS. Moreover, antigen 5 - expressing yeast cells were capable of mediating allergen-specific histamine release from human basophils.

**Conclusions:** All the three major wasp venom allergens were expressed on the yeast surface. A high-level expression, which was observed only for antigen 5, was needed for detection of IgE binding by FACS and for induction of histamine release. The non-modified *S. cerevisiae* cells did not cause any unspecific reaction in FACS or histamine release assay despite the expression of high-mannose oligosaccharides. In perspective the yeast surface display may be used for allergen discovery from cDNA libraries and possibly for sublingual immunotherapy as the cells can serve as good adjuvant and can be produced in large amounts at a low price.

## Background

Identification and characterization of allergenic compounds is essential for development of advanced component-resolved allergy diagnostics and treatment [1,2]. Single allergens can be identified either by resolving an allergenic extract into single proteins or by recombinantly expressing a library of allergenic genes in a host organism. In the later approach phage display in *E. coli* is commonly used [3,4]. However, *E. coli* is known to fail to express a number of eukaryotic proteins due to the lack of foldases and chaperones, which are important for the correct folding of proteins. Most allergens

have conformational IgE epitopes, which might disappear if the protein is folded incorrectly. This can represent a limitation of a phage display. Yeast offers an alternative approach for display and selection of antigens and antibodies. Firstly, it provides a wider repertoire of correctly folded and glycosylated proteins, secondly, it allows a more convenient and faster screening of positive clones by fluorescent-activated cell sorting. Bowley *et al.* [5] compared phage and yeast display for their ability to express HIV-1 immune scFv cDNA library. The obtained clones were screened with the same selecting antigen (HIV-1 gp120). Yeast library was far superior to the phage display library selecting all the scFv identified by phage display and twice as many novel antibodies. In another study Wadle *et al.* [6] identified 33 novel breast cancer-related antigens using yeast

\* Correspondence: lkpallgy@mail.dk

<sup>2</sup>Dermato-Allergological Dept. K, CUH-Gentofte, Rigshospitalet Dept 7551, Blegdamsvej 9, 2100 København Ø, Denmark

Full list of author information is available at the end of the article

surface display library, of these only four were found previously when using bacterial-based libraries. In addition to being useful for novel antigens discovery, the yeast display can be used in various other applications such as protein engineering, immunoassays, affinity purification and as vaccines [7]. Baker's yeast *Saccharomyces cerevisiae* has GRAS (generally regarded as safe) status, which simplifies its use in pharmaceutical applications. To the best of our knowledge, there are no previous literature reports of yeast surface display technology applied to allergens. A major obstacle in the application of yeast surface display for expression of allergens could be interference from the high-mannose oligosaccharides, which may either bind IgE or hinder IgE binding to the peptide-determinant. IgE antibodies directed towards carbohydrate epitopes (cross-reactive carbohydrate determinants, CCDs) are common in sera of patients allergic to insect venoms and plant allergens [8]. For example, the anti-CCD IgE were found in 28% of honey-bee venom allergic patients [9], 33% of grass-allergic patients [10], and 45-55% of carrot-celery allergic patients [11,12]. However, a number of studies have shown that the anti-CCD IgE are commonly directed towards core  $\alpha$ 1,3-fucose, which does not occur in yeast [8,13].

There are several systems that allow display on the yeast cells, based on a-agglutinin,  $\alpha$ -agglutinin or flocculin proteins. A- and  $\alpha$ -agglutinins mediate the cell-cell adhesion during the yeast cell mating and are located on the outmost surface of yeast cells. a-type mating cells express a-agglutinin, which consists of AGA1 subunit attached to the cell wall by glycosylphosphatidylinositol (GPI) anchor and of a small AGA2 subunit connected with AGA1 by disulfide bridges. The DNA sequence encoding protein of interest can be fused to the C-terminal of *aga2* gene and transformed into an *aga1*-overexpressing *S. cerevisiae* strain, which will result in the protein being expressed as fusion with AGA2 on the outmost cell surface of the yeast cells (Figure 1).

We have chosen common wasp *Vespula vulgaris* venom allergens as the model for testing allergen expression on the surface of *S. cerevisiae*. The diagnosis and treatment of stinging insect allergies as wasp and honey bee have been used as an allergy model for several decades [14]. After the substitution of whole body extract therapy by venom extracts in 1979, the efficacy of treatment reached 95% for wasp venom allergy and 80% for honey bee venom allergy [15]. The composition of the vespid venoms has been extensively studied and the major allergic components have been identified [16]. On average there is 1.7-17  $\mu$ g of protein in a vespid venom sac with 3.3% being phospholipase A1, 1.5% hyaluronidase, and 8.1% antigen 5, which all can cause allergic response in humans [17,18]. Phospholipase A1 is

a 35 kDa non-glycosylated enzyme; antigen 5 is a 23 kDa non-glycosylated protein with so far unidentified function [19]. Hyaluronidase is a 45 kDa glycoprotein, in which insect-type glycosylation with  $\alpha$ 1,3-fucoses is believed to be responsible for cross-reactivity with sera of honey-bee sensitized patients [8,20]. Three allergens from the common wasp venom have been expressed recombinantly in *E. coli* [21-24] and insect cells [25,26] and antigen 5 was additionally expressed in yeast *Pichia pastoris* [23].

Here we describe expression and characterization including the biological activity of three major wasp venom allergens phospholipase A1, hyaluronidase and antigen 5 on the surface of *S. cerevisiae* cells.

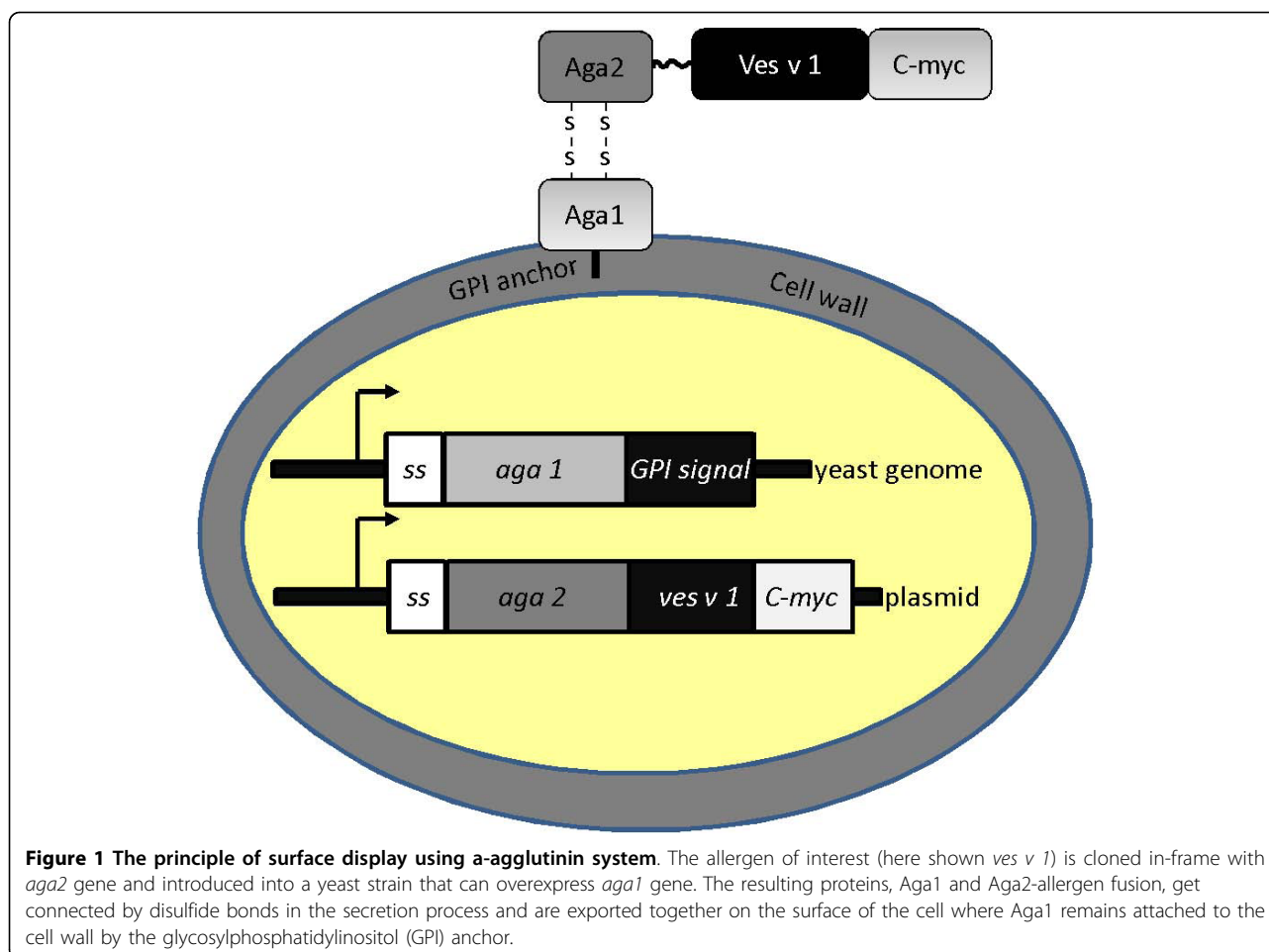
## Results and discussion

### Cloning of allergen genes

The genes encoding major wasp allergens phospholipase A1 (Ves v 1.0101, further called Ves v 1), hyaluronidase (Ves v 2.0101, further called Ves v 2) and antigen 5 (Ves v 5.0101, further called Ves v 5) were amplified from the total RNA of common wasp *V. vulgaris* by RT-PCR. We also attempted amplifying the gene, encoding a hyaluronidase-like protein without enzymatic activity (Ves v 2.0201), which was found previously in *V. vulgaris* and *V. germanica* venoms [25], but only non-specific gene products of *ves v 2.0201* were obtained. The genes were subsequently cloned into TOPO vector and sequenced.

There were a few differences from the gene sequences reported by King's group [21,27]. Phospholipase A1-encoding gene had six variations, five of which were single point mutations and one was a change of all the three nucleotides in a triplet. For hyaluronidase 4 nucleotide discrepancies from the previously published sequence were observed, all were silent point mutations; hence, the amino acid sequence remained as reported before. Hyaluronidase is known to be more conserved than phospholipase A1. So common wasp hyaluronidase has 92% identity with amino acid sequence of a homolog from white faced hornet, while phospholipase A1 has only 67% identity [21]. The sequence of antigen 5-encoding gene had six single nucleotide variations from King's sequence, four of which have been reported elsewhere (GenBank accession nr. AJ238849). It is important to note that neither of the variations was positioned in the predicted active site (UniProt <http://www.uniprot.org>) or affected cysteins, hence the disulfide bond formation should not be disturbed.

In general, the variations in the gene sequences can be explained firstly by different geographical locations as the wasps in King's work were from Vespa Labs (PA, USA), while our wasps were from Denmark in Europe. Secondly, it can come from polymorphism, which has been described even for genes within the same vespids'



population. Thus Hoffman sequenced Ves m 1 protein from *V. maculifrons* and Dol m 1.02 from white faced hornet *Dolichovespula maculate* and found 3 amino acids variant positions in Ves m 1 and 2 variants positions in Dol m 1.02 [28]. Soldatova, Kochoumian and King [29] described 4 natural variants of *dol m 1.01* mRNA sequence.

#### Expression of allergens on the surface of yeast

The genes were PCR-amplified with overhangs and directionally cloned into a-agglutinin expression vector to make an in-frame fusion with *aga2* gene (Figure 1, 2). The plasmids were transformed into *S. cerevisiae* strain EBY100, which can overexpress another protein of the a-agglutinin system - AGA1. When the cells were grown on inducing medium, the AGA1 and AGA2-allergen fusion was expressed and exported on the cell surface as a complex held by disulfide bonds (Figure 1). A 51-amino acid long fragment of human CD20 protein was used as a non-allergen control. CD20 antigen is expressed on the surface of mature B-lymphocytes and to the best of our knowledge there are no reports on

the presence of IgE antibodies to this autologous protein in human sera. The allergens also contained a 10 amino acid-long C-myc tag at the C-terminal. The expression of allergens was quantified by fluorescent cytometry after staining the expressing cells with anti-C-myc antibody conjugated with AlexaFluor488 (Table 1). The expression of antigen 5 was almost just as high as of the reference protein CD20; however there was very weak expression of phospholipase A1 and hyaluronidase. We speculate that these allergens might be toxic to the yeast cells because of their enzymatic activity. The a-agglutinin vector is a replicating vector, which is retained in the cells due to tryptophan selection. As tryptophan is an amino acid needed in very small amounts, the selection is not very strong and the vector can be lost by the cells. To circumvent the problem we introduced zeocin resistance marker into the vector and performed cultivation in the presence of zeocin antibiotic so that constant selective pressure was applied (Figure 3, Table 1). The expression level of CD20 and antigen 5 improved from when only tryptophan selection was used; now correspondingly 74.9 and 73.4% of the cells expressed the

**Table 1 Quantification of allergen expression on the surface by FACS analysis**

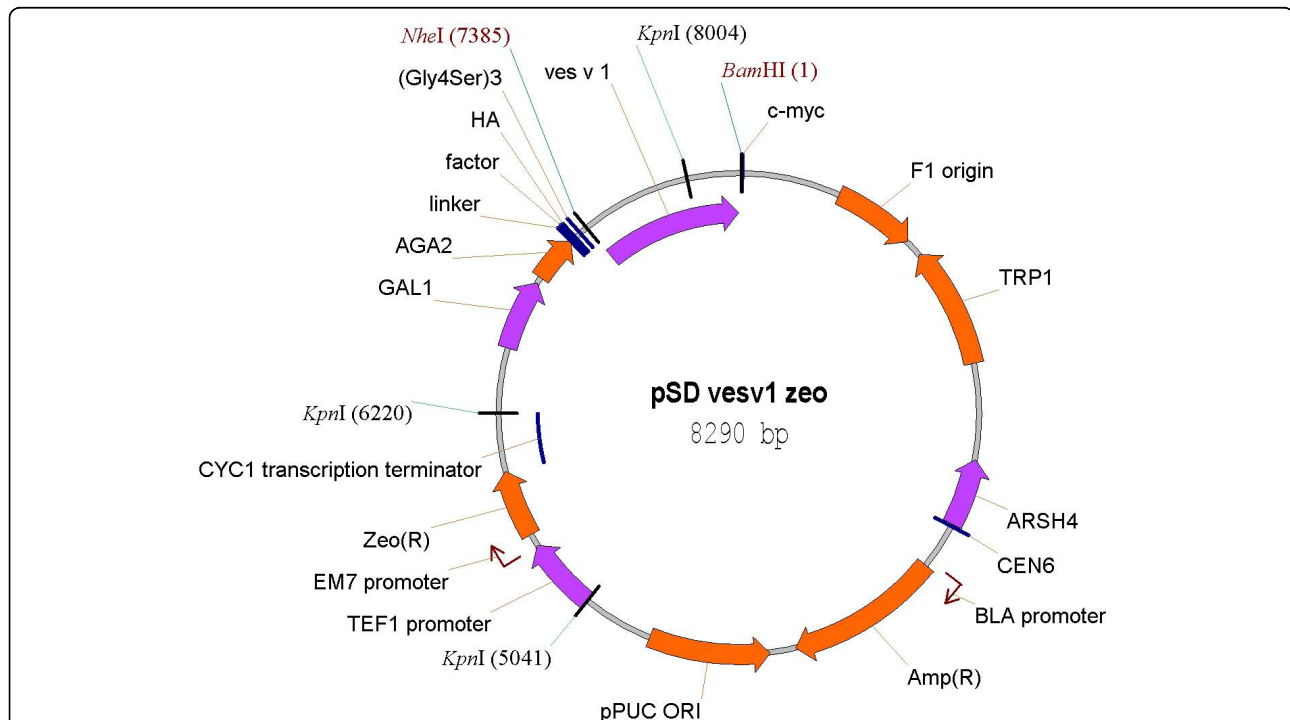
Protein	% of expressing cells		Geometrical mean ratio	
	Tryptophan selection	Tryptophan and zeocin selection	Tryptophan selection	Tryptophan and zeocin selection
None	2.4	-	1.0	-
CD20	43.7 ± 1.0	74.9 ± 1.3	3.1 ± 0.2	11.5 ± 0.3
Phospholipase A1 (Ves v 1)	3.3	5.6	1.2	1.1
Hyaluronidase (Ves v 2)	5.1	5.3	1.3	1.5
Antigen 5 (Ves v 5)	32.8	73.4	2.2	9.3

The cells were stained with anti-C-myc antibody conjugated with AlexaFluor488 and analyzed by fluorescent flow cytometry. The intensity of the green fluorescent signal was measured. For calculation of percentage of expressing cells and geometrical mean ratio the labeled cells were compared with non-labeled cells. The labeling of CD-20-expressing cells was performed in triplicates and the average and standard deviation are shown.

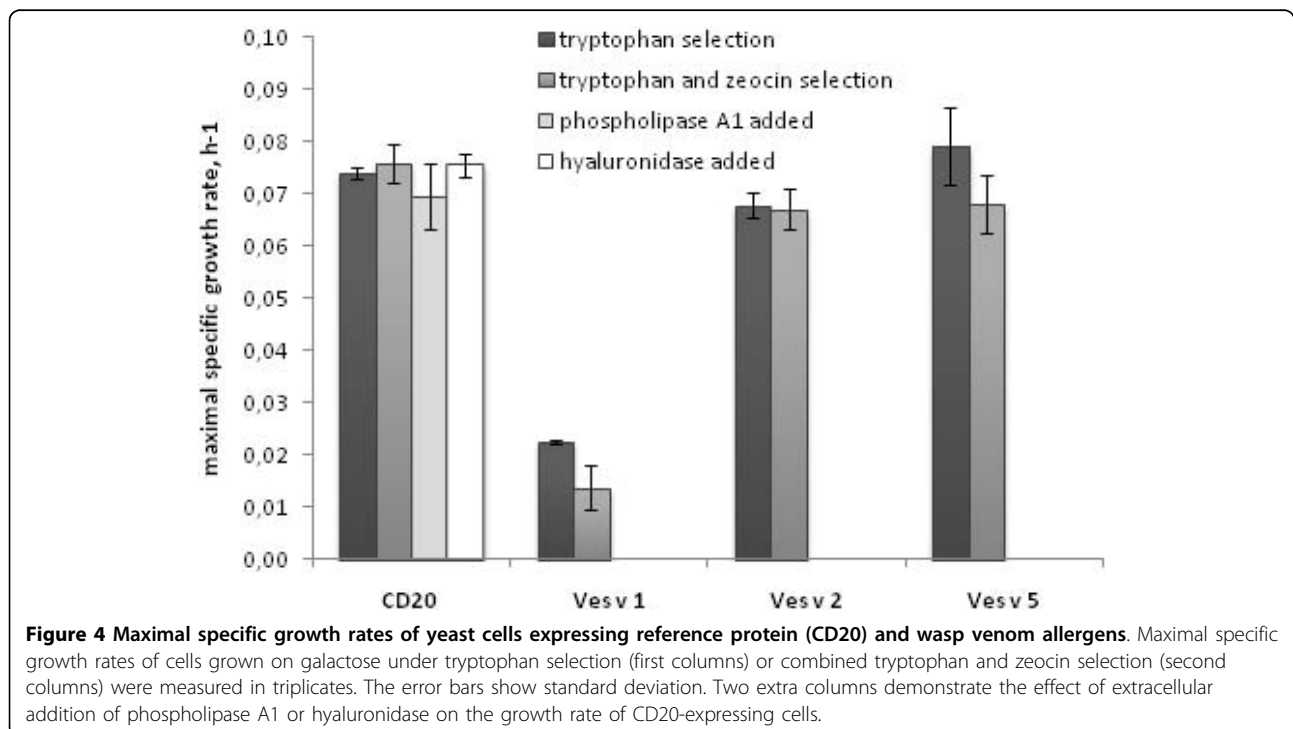
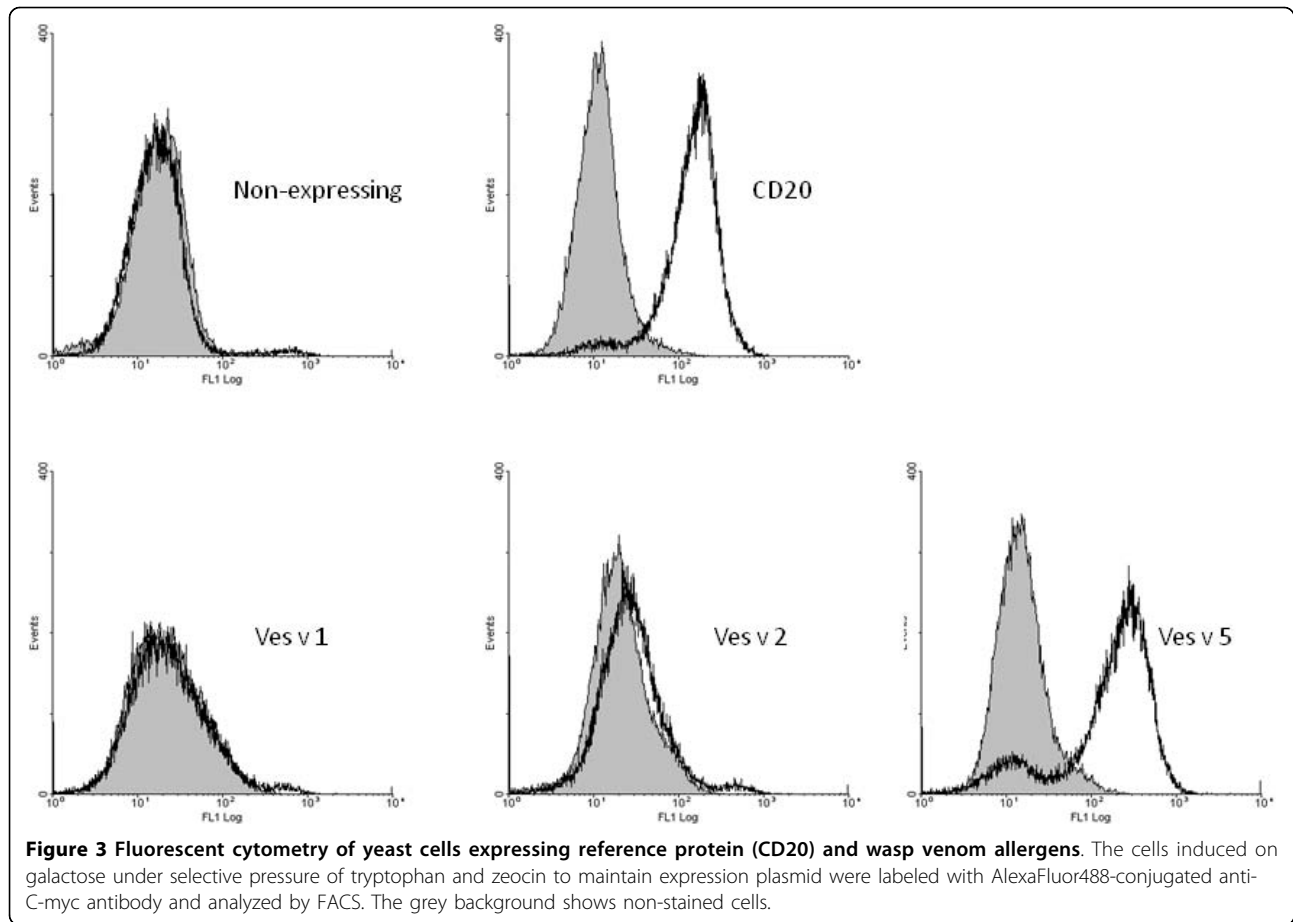
proteins against 43.7 and 32.8% before. Moreover increased mean ratio indicated higher amount of displayed protein per cell. The hyaluronidase and phospholipase A1 expressing cells had increased autofluorescence, which can be a sign of stress. About 5-4% of the cells expressed phospholipase A1 and hyaluronidase, though the amount of allergens per expressing cell was much lower than for antigen 5 or CD20, as can be judged from the low mean ratios (Table 1). Besides improving the allergen expression introduction

of zeocin selection also had a positive effect on selecting correct yeast transformants as the false positives were fully eliminated.

In order to evaluate toxicity of the allergens to the expressing yeast cells we performed growth rate experiments, which showed that the phospholipase A1 expression decreased the maximal specific growth rate by 70% and 82% when cells were grown without or with zeocin selection correspondingly (Figure 4). In contrast, addition of phospholipase A1 (Lecitase® Ultra) directly into



**Figure 2 Vector map of a surface display vector with zeocin resistance.** The original vector pCTCON2 [36] was modified by addition of zeocin resistance cassette, containing yeast TEF1 promoter, prokaryotic EM7 promoter, zeocin resistance gene *ble* from *Streptoalloteichus hindustanus* and transcription terminator CYC1. The allergen genes were cloned flush downstream the flexible peptide linker (Gly<sub>4</sub>Ser)<sub>3</sub>, which was connected to *aga2* gene under control of galactose-inducible promoter GAL1. The allergen genes were also cloned in-frame with C-terminal myc tag. The vector additionally contained ampicillin resistance marker Amp(R) for selection in *E. coli*, tryptophan selection marker TRP1 for selection in *S. cerevisiae*, pUC origin of replication for *E. coli*, and CEN6/ARSH4 origin for vector replication in *S. cerevisiae*.



the growth medium with CD20-expressing yeast in the amount of 3.3 u/ml (which is about an order of magnitude higher than the expressing cells can accumulate at the given conditions) did not have a reverse effect on the growth rate. Most likely the cells are protected from the extracellular phospholipase by their cell wall and therefore are not influenced by its presence in the medium, while the phospholipase which is produced inside the cells damages them during synthesis and secretion. The hyaluronidase expression caused a statistically significant decrease in the maximal specific growth rate ( $p < 0.05$ ), though much less pronounced than the phospholipase A1: 8% and 11% for cells grown with tryptophan or with tryptophan-zeocin selection correspondingly. The external addition of *Streptomyces hyalurolyticus* hyaluronidase at the concentration of 17 u/ml did not affect the growth (the enzyme activity exceeds the recombinant hyaluronidase activity that the cells can accumulate by an order of magnitude).

Expression of phospholipase A1 and hyaluronidase might also be limited by the capacity of yeast endoplasmic reticulum to fold these heterologous proteins, which would result in unfolded protein response, characterized by loss of protein expression and various stress reactions [30]. Lower cultivation temperatures have been shown to reduce the unfolded protein response and can be attempted in future studies to improve the cell surface expression of difficult proteins [31].

#### Enzymatic activity of the surface-bound allergens

We tested the enzymatic activity of the yeast cells expressing phospholipase A1 and hyaluronidase. The enzymatic activity of phospholipase A1 was measured to 0.08 and 2.6 units/ $10^9$  cells when grown with only tryptophan or tryptophan/zeocin selection correspondingly. Hence the addition of zeocin selection improved the expression of phospholipase A1 by an order of magnitude. For the hyaluronidase an improvement was also found. Here the numbers were 31 and 90 units/ $10^9$  cells, which is a 3-fold increase.

#### Binding IgE from patient serum by FACS

The ability of the surface-expressed allergens to bind human IgE antibodies was tested by incubating the yeast cells with serum, staining with anti-IgE biotinylated antibody and streptavidin-phycoerythrin and analyzing the cells by flow cytometry (Figure 5). A serumpool from five wasp venom allergic patients was used as positive control and a serumpool from healthy individuals was used as negative control. Preceding FACS analysis the pool of wasp venom allergic sera was tested by western blot with venom extract to confirm that IgE against all the three allergens were present (data not shown).

The yeast cells without surface protein or expressing the reference CD20 protein did not bind IgE antibodies from either serumpool. Antigen 5-expressing cells bound IgE from the wasp venom allergic serumpool, but not from the control serumpool. Hyaluronidase-expressing cells bound very limited IgE but from both serumpools indicating an unspecific IgE effect. The binding of IgE to phospholipase A1 could not be detected presumably because of the low expression level. Double staining with anti-C-myc antibody and IgE confirmed that it is the cell population that binds anti-C-myc and hence has the allergen protein expressed that also gives a signal for IgE binding (Figure 6).

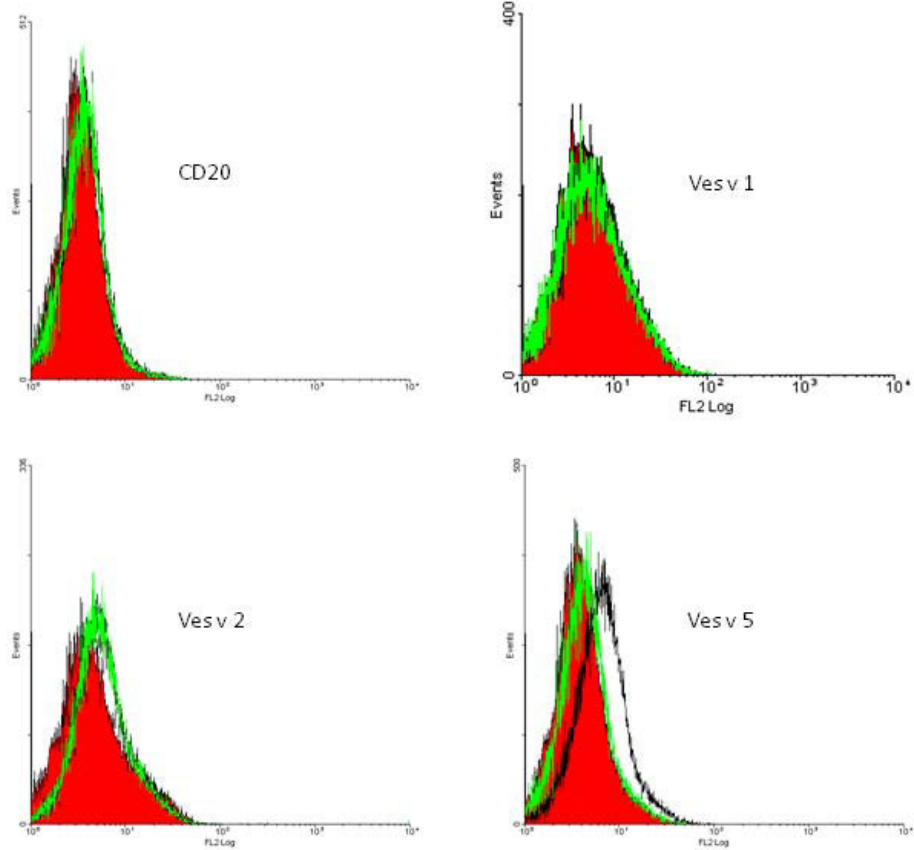
#### Histamine release assay

The allergen-expressing cells were tested for their ability to mediate a histamine release from blood basophils sensitized with IgE from wasp venom allergics or healthy controls. Basophils were challenged with wasp venom to illustrate the wasp venom specific response and as seen in Figure 7, only the basophils sensitized with serum from wasp venom allergics released histamine.

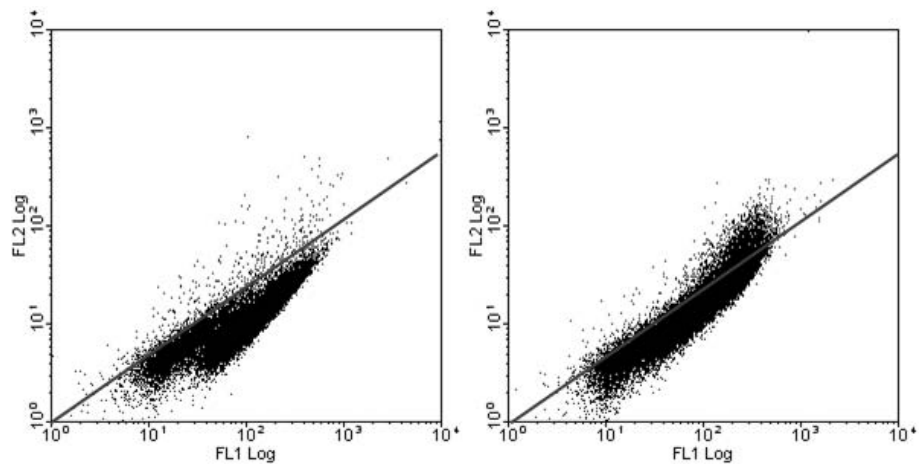
Comparable to the IgE-binding analysis, the CD20-expressing cells did not mediate a histamine release. Hyaluronidase did not mediate a histamine release supporting that the unspecific IgE binding seen with FACS is not biologically relevant. In 1 out of 4 experiments phospholipase A1 mediated an unspecific histamine release since both wasp venom sensitive and control basophils were activated (data not shown). Antigen 5 however did activate the wasp venom sensitive basophils and a dose response curve could be generated as seen in Figure 7A. The potency of  $10^6$  antigen 5 - expressing cells correspond to about 1 ng of wasp venom extract. Antigen 5 did not activate basophils sensitized with control serum.

#### Conclusions

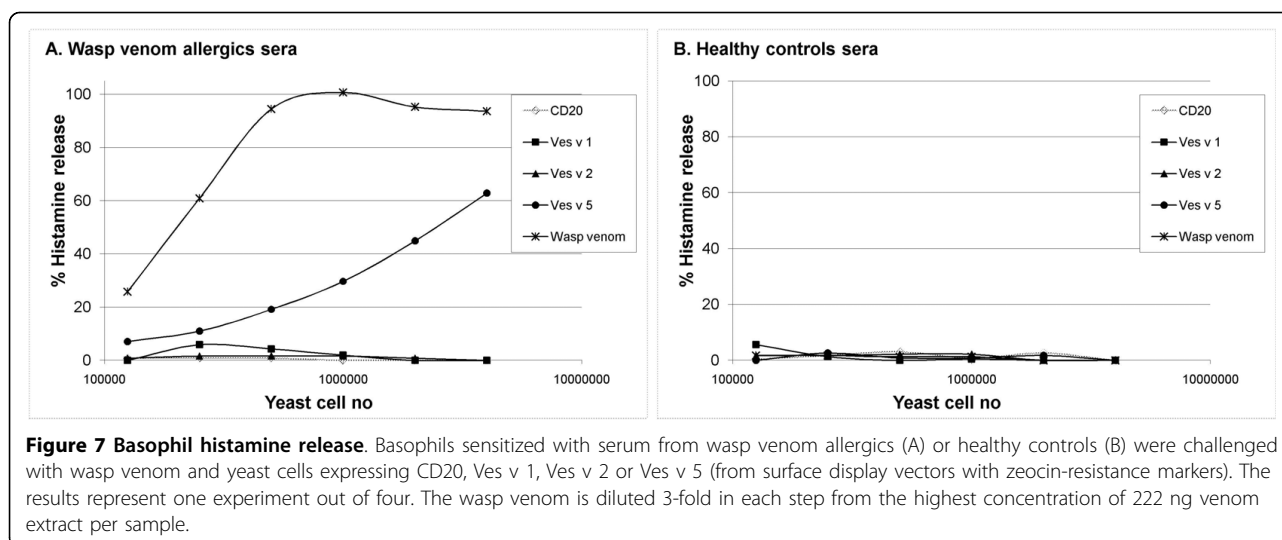
The aim of the study was to test whether allergenic proteins retained their IgE-binding activity when expressed on the surface of yeast cells. Moreover, we aimed at studying whether allergen displaying yeast cells expressed allergenic activity in a biological model of the allergic reaction: the basophil histamine release test. We chose wasp venom allergens as the model allergens, which proved to be a difficult case due to the cellular toxicity of one allergen (phospholipase A1) and low expression of another allergen (hyaluronidase) for unknown reasons. However, some levels of expression of both allergens were obtained and corresponding enzymatic activities were detected, suggesting that the proteins obtained a certain degree of their native confirmation. There have been no reports so far on



**Figure 5** Fluorescent cytometry analysis of cells binding to serum IgE. Binding of yeast cells to the IgE from sera. Red background shows non-labeled cells, black line shows cells labeled with positive serumpool and the green line shows cells labeled with control serumpool.



**Figure 6** Correlation between allergenic protein expression and binding to serum IgE. Double staining of cells expressing CD20 (left) or Ves v 5 (right) with patient sera IgE and anti-C-myc antibody. The anti-C-myc binding is measured in FL1 and the IgE binding in FL2.



**Figure 7 Basophil histamine release.** Basophils sensitized with serum from wasp venom allergics (A) or healthy controls (B) were challenged with wasp venom and yeast cells expressing CD20, Ves v 1, Ves v 2 or Ves v 5 (from surface display vectors with zeocin-resistance markers). The results represent one experiment out of four. The wasp venom is diluted 3-fold in each step from the highest concentration of 222 ng venom extract per sample.

recombinant expression of these two proteins in a yeast host. The last allergen that we tested, antigen 5 was well expressed on the surface of yeast cells; it retained IgE binding and could induce allergen-specific histamine release. The non-modified yeast showed neither IgE binding in the FACS assay nor activity in the histamine release assay.

The procedure for allergen expression on the surface is fast and the cells can be tested directly for IgE binding by FACS and histamine release without the need for recombinant protein purification. As an eukaryotic host, yeast is more likely to fold eukaryotic proteins more efficiently and to form disulfide bonds correctly, which eliminates the need of refolding the proteins as after expression in *E. coli* [32,33]. The proteins made by yeast are also N-glycosylated [34], which is sometimes important for proper folding as in the case of hyaluronidase [35]. It should be mentioned that the glycosylation is of high-mannose type and its interaction with human immune system is largely unknown [8]. We, however, did not observe IgE binding to yeast cells that could be related to carbohydrate-determined IgE reactivity. The immunogenic reactivity of antigen 5 should not be related to CCD reactivity, because this protein is not N-glycosylated neither in its native form in the venom nor when expressed recombinantly in yeast *P. pastoris* [23].

The expression of allergens on the surface of yeast cells presents new opportunities as identification of novel allergens in yeast display cDNA libraries and immunotherapy with yeast cells.

## Methods

### Patients

5 patients were chosen based on their serum IgE reactivity with venom extract in ImmunoCap assay (Phadia),

all CAP class 4 or above. The equal volumes of sera were pooled and used as the positive sera. The negative control sera pool consisted of 3 sera from non-allergic individuals as confirmed by negative histamine release assay with wasp venom. The usage of patients' sera in the current study was approved by the local ethical committee.

### Chemicals

The chemicals were purchased from Sigma-Aldrich and BD Biosciences. Zeocin™ was purchased from Invitrogen. Anti-C-myc monoclonal mouse IgG antibody, conjugated to horse radish peroxidase, was purchased from Invitrogen. Mouse monoclonal anti-C-myc antibody (clone 9E10) conjugated with AlexaFluor® 488 was from AbD Serotec. Biotin-conjugated mouse anti-human IgE antibody (clone G7-26) and streptavidin-phycoerythrin (PE) conjugate (SAv-PE) were from BD Biosciences. Hyaluronic acid potassium salt from human umbilical cord and hyaluronidase from *Streptomyces hyalurolyticus* were from Sigma-Aldrich. The restriction enzymes and T4 DNA ligase were from New England Biolabs Inc. *Vespula* venom extract used in western blots was a kind gift of Jørgen Nedergaard Larsen (ALK Abelló, Hørsholm, Denmark). *Vespula* venom extract used in histamine release assay was from ALK Abelló and contained 136 µg/ml protein.

### Strains and plasmids

The *E. coli* strains used for cloning were TOP10 and DH10B, both deficient in recombinase (*recA*) and endonuclease A (*endA*). The *Saccharomyces cerevisiae* strain was EBY100 (a *GAL1-AGA1::URA3 ura3-52 trp1 leu2Δ1 his3Δ200 pep4::HIS2 prb1Δ1.6R can1GAL*), Trp<sup>-</sup>Leu<sup>-</sup>, kindly provided by Dr. K. Dane Wittrup from MIT,



USA. The plasmid pCTCON2 was also a gift from K. Dane Witttrup. Vector pPICZalphaA was purchased from Invitrogen. For longer storage the *E. coli* strains were stored in LB medium with 25% glycerol and yeast strains were stored in YPD with 15% glycerol at -80°C.

### Insects

Common wasps (*V. vulgaris*) were caught at two nests in Denmark. The wasps were classified as *V. vulgaris* based on their morphology: 15 mm-long body with characteristic yellow and black colors, a black anchor on the head, and black rings on the abdomen.

### RNA isolation

The venom sacs were removed with tweezers and immersed in RNAlater solution (Ambion, Inc.), stored overnight at 4°C and then transferred at -20°C for longer storage. For RNA isolation 10 venom sacs were removed from the RNAlater solution, grinded in liquid nitrogen, transferred to a FastPrep tube with 0.25-0.5 mm diameter acid-washed glass beads. 600 µl of RLT buffer was added and the samples were homogenized in a FastPrep FP120 machine (Qiagen) at 2 cycles of 30 s with power set to 5.5. Further on the total RNA was extracted using RNeasy Mini kit (Qiagen) according to the manufacturer's instructions. The final RNA concentration and purity was determined on spectrophotometer and on electrophoresis gel.

### Cloning of allergen genes

The genes encoding phospholipase A1 (*Ves v 1*), hyaluronidase (*Ves v 2.0101*) and antigen 5 (*Ves v 5*) were amplified from the total RNA of *V. vulgaris* using RT-PCR (Superscript III One-Step RT-PCR System with Platinum Taq DNA Polymerase, Invitrogen). The gene encoding hyaluronidase variant (*Ves v 2.0201*) could not be amplified. As a positive control for RT-PCR reaction we amplified fragments of 18 S and 28 S RNA. The primers used for RT-PCR reactions are shown in Table 2. Two genes, *ves v 1* and *ves v 5*, were amplified together with their signal sequences. For the hyaluronidase (*ves v 2*) the signal sequence was not known, hence only the part encoding mature protein was amplified. 2.5 µl of the RT-PCR reaction were further used as a template in a 100-µl PCR reaction with Expand High Fidelity polymerase (Roche Diagnostics) and with the same primers to generate sufficient amounts of the fragment for cloning. The PCR reaction product was separated on 1.1% agarose gel stained with SYBR-safe (Invitrogen). The fragments of the correct size were excised with a scalpel and purified from the gel using GFX PCR DNA and gel band purification kit (GE Healthcare). The fragments were cloned into pCR<sup>2.1</sup>-TOPO<sup>®</sup> vector, using TOPO TA Cloning<sup>®</sup> kit (Invitrogen) and transformed into

chemically competent *E. coli* TOP10 cells. The transformants were selected on SOB plates with 20 mM MgCl<sub>2</sub>, 50 µg/ml kanamycin and 50 µg/ml X-gal. White colonies were screened for the presence of the cloned fragment using colony PCR with the fragment-specific primers (the same as used for RT-PCR). 3-4 correct clones were grown overnight and the plasmid was extracted using GeneElute™ Plasmid Miniprep kit (Sigma-Aldrich). After confirmation of the correct construct by restriction, the plasmids were sequenced at Eurofins MWG Operon or StarSEQ.

### Construction of surface display vectors

The genes *ves v 1*, *ves v 2* and *ves v 5* were amplified from the corresponding TOPO plasmids TOPO\_vesv1, TOPO\_vesv2 and TOPO\_vesv5 with forward and reverse primers indicated in Table 2 (primers starting with "SD") using Expand High Fidelity polymerase (Roche Diagnostics). The PCR products were separated on 1.1% agarose gel, cut and purified from the gels using GFX kit (GE Healthcare). The purified PCR fragments were restricted with NheI and BamHI enzymes and cloned into pCTCON2 vector, which was digested with the same restriction enzymes and gel purified. The ligation of the vector and the insert was performed with T4 DNA ligase (New England Biolabs, UK) at room temperature for 30 min. The ligation mixture was transformed into chemically competent *E. coli* DH10B cells and the transformants were selected on Luria-Bertani (LB) agar plates with 100 µg/ml ampicillin. The transformants carrying inserts were identified by colony PCR with the same primers as above. The correct transformants were grown in LB broth with 100 µg/ml ampicillin overnight and the plasmids were isolated using GenElute Miniprep kit (Sigma-Aldrich). The resulting surface display vectors were named pSD\_vesv1, pSD\_vesv2 and pSD\_vesv5. The sequence of the plasmids was confirmed by restriction digestion and by sequencing.

### Construction of surface display vectors with zeocin resistance

The zeocin resistance cassette was PCR-amplified with *zeo\_fw* and *zeo\_rv* primers (Table 2) using plasmid pPICZalphaA as the template. The resulting fragment was purified from the gel, digested with KpnI and cloned into surface display vectors pSD\_vesv2 and pSD\_vesv5 cut with the same enzyme. The transformants were selected on LB plates with 100 µg/ml ampicillin and 25 µg/ml zeocin, giving pSD\_vesv2\_zeo and pSD\_vesv5\_zeo. For the construction of pSD\_vesv1\_zeo vector a different strategy was applied because the *vesv1* gene contained a KpnI restriction site. The PCR-amplified and KpnI-digested zeocin resistance cassette was

**Table 2 List of primers**

Primer name	Sequence	Application
vesv1_fw	ATGGAAGAAAATATGAATTTAAAG	Cloning genes from RNA
vesv1_rv	TTAAATTATCTCCCTTGTTATTG	
vesv2.0101_fw	TCCGAGAGACCGAAAAGAG	
vesv2.0101_rv	TTAGTTGACGGCTTCTGTAC	
vesv2.0201_fw	GACAGAACAATTTGGCTAAG	
vesv2.0201_rv	CTAAAAGTTTAACGGTGTGTTTC	
vesv5_fw	ATGGAAATTAGTGGGCTC	
vesv5_rv	TTACTTTGTTTGATAAAGTTCCTC	
28SrRNAvesv_fw	AGCGTCAGCGGGCTG	
28SrRNAvesv_rv	GAGACACTGACCGCGCTG	
SD_vesv1_fw	<i>NheI</i> ATCAGCTAGCGGACCCAAATGTCCTTTAAATC	Cloning genes into surface display vector
SD_vesv1_rv	<i>BamHI</i> CGATGGATCCAATTATCTCCCTTGTTATTGC	
SD_vesv2_fw	<i>NheI</i> ATCAGCTAGCTCCGAGAGACCGAAAAG	
SD_vesv2_rv	<i>BamHI</i> CGATGGATCCGTTGACGGCTTCTGTG	
SD_vesv5_fw	<i>NheI</i> ATCAGCTAGCAACAATTATTGTAATAAAATG	
SD_vesv5_rv	<i>BamHI</i> CGATGGATCCCTTTGTTTGATAAAGTTC	
zeo_fw	<i>KpnI</i> TAGATTGGTACCCCCACACCATAGCTTC	Cloning zeocin resistance gene
zeo_rv	<i>KpnI</i> GTCCTCGGTACCAGCTTGCAAATTAAGC	

The first group of primers was used for amplification of four allergen genes and control 18 S rRNA from wasp venom sac RNA. The second group of primers was used for generating fragments with *NheI* and *BamHI* overhangs for cloning into surface display vector. The last set of primers was used for cloning zeocin resistance cassette with *KpnI* overhangs. The restriction sites are underlined.

ligated with pCTCON2 vector digested with *KpnI* and the ligation mixture was transformed into *E. coli*. After selection of the zeocin-resistant clones, the plasmid pCTCON2\_zeo was isolated and the vesv1 gene was cloned into it in the same way as it was cloned into pCTCON2 vector above.

#### Yeast transformation

The surface display plasmids pCTCON2, pCTCON2\_zeo, pSD\_ves1, pSD\_vesv2, pSD\_vesv5, pSD\_vesv1\_zeo, pSD\_vesv2\_zeo, pSD\_ves5\_zeo were transformed into *S. cerevisiae* strain EBY100 as following. A single colony of *S. cerevisiae* was inoculated in 2 ml YPD medium overnight at 30°C with shaking. Next morning 50 ml YPD in a 500-ml shake flask was inoculated with the overnight culture to the start optical density (OD<sub>600</sub>) of 0.2 and grown until OD<sub>600</sub> of 1.4-1.6. The cells were collected by centrifugation at 3,000 × g for 5 min, washed twice with 50 ml MilliQ water and once with 10 ml transformation buffer (20 mM HEPES in 1 M sorbitol). The cells were eventually resuspended in 100 µl transformation buffer. 40 µl of the cell suspension were mixed with

5 µl of plasmid preparation, electroporated on Gene Pulser (Bio-Rad Laboratories) at 1.5 kV. 1 ml transformation buffer was added to the cells immediately after electroporation and the cell suspension was transferred to a 15 ml tube. After incubation at 30°C for 1 hour the cells were centrifuged, resuspended in 100 µl buffer and volumes of 10 and 50 µl were plated on tryptophan-deficient SDCAA plates [36]. When transforming vectors with zeocin resistance cassettes the SDCAA was supplemented with 100 µg/ml zeocin. Colonies appeared after 2-3 days of incubation at 30°C. The presence of the vector was confirmed by colony-PCR using gene-specific primers.

#### Cultivation and induction of yeast cells

The cultivation medium was SDCAA and SGCAA as described in Chao *et al.* [36], except that the phosphate concentration was reduced to 50 mM in order to avoid zeocin inhibition by high salt concentration. The SDCAA medium contained 20 g/L dextrose as carbon source, while in SGCAA medium the dextrose was replaced by the same amount of galactose. A single

colony was inoculated in 20 ml SDCAA medium in 500-ml baffled flask and grown overnight at 30°C with shaking at 150 rpm to an OD<sub>600</sub> of about 1-2. The cells were harvested by centrifugation and resuspended in SGCAA medium to OD<sub>600</sub> of 1. The cultures were transferred into 500-ml baffled shake flasks and grown at room temperature (22-23°C) for 30 hours. The cultures were stored at +4°C until analysis, but never longer than one week.

#### **Growth experiment**

For the growth rate experiments the cells were grown in SDCAA as above and then resuspended to the OD<sub>600</sub> of 0.1 in SGCAA medium with or without 100 µg/ml zeocin. The cell suspensions were pipetted into a sterile 96-well flat-bottom microtiter plate (100 µl suspension per well) (Nunc 96-microwell plate from Thermo Scientific). Sterile SGCAA media was used as the background reference. All the samples were run in triplicates. The plates were covered by air-permeable transparent film and shaken during overnight incubation at room temperature. The OD<sub>600</sub> readings were performed automatically every half an hour with Multiscan Accent (Thermo Scientific). The data was exported into Excel (Microsoft) and used to calculate the maximum specific growth rates during the exponential growth phase.

#### **SDS-Polyacrylamide Gel Electrophoresis**

The gel was a pre-cast 10% NuPAGE® Novex® Bis-Tris electrophoresis gel from Invitrogen. The protein size marker was unstained or pre-stained PageRuler™ protein ladder from Fermentas (Germany). The samples were mixed with NuPAGE® LDS sample buffer (4×) and NuPAGE® reducing agent (10×) and heated at 70°C for 10 min before loading on the gel. The electrophoresis was performed at a constant voltage of 200 V for 35 min. The gel was used for western blot or stained with silver stain (Fermentas, Germany).

#### **Western blot**

For western blot the proteins were electrophoretically transferred onto 0.2 µm PVDF membrane Amersham Hybond™-P (GE Healthcare) using Mini Trans-Blot® electrophoretic transfer cell (Bio-Rad Laboratories) at 100 V for 1 hour. The transfer was done in 25 mM Tris, 192 mM glycine, and 20% v/v ethanol buffer.

#### **Detection of expression with anti-C-myc antibody**

The cells grown in SGCAA were analyzed for expression of the allergen using Alexa488-conjugated anti-C-myc antibody. The analysis was possible because the allergens were cloned in-frame with c-myc epitope present in the pCTCON2 vector. The C-myc epitope was positioned at the C-terminal of the proteins. The cell

volume containing about 10<sup>6</sup> yeast cells (OD<sub>600</sub> of 1 corresponds to about 10<sup>7</sup> cells/ml) was moved to an epend-off tube with 1 ml blocking buffer (5 g/L skim milk powder, 50 mM Tris, 150 mM sodium chloride, 0.1 g/L Tween 20, pH 7.5). The content was mixed by inversion and centrifuged at 4,000 × g for 2 min. The supernatant was removed with a pipette and the cells were resuspended in 45 µl blocking buffer and 5 µl anti-C-myc-Alexa488 and incubated in the dark at room temperature for 1 hour with occasional mixing. Non-labeled controls with omission of antibody were prepared as well. The cells were washed twice with cold TBST buffer (50 mM Tris, 150 mM sodium chloride, 0.1 g/L Tween 20, pH 7.5) and resuspended in 500 µl TBST. The cells were analyzed by flow cytometry on Cytomics FC 500 MPL flow cytometry system with MXP software (Beckman Coulter). The cell debris and other small particles were eliminated from analysis by setting the forward scatter threshold. Normally about 95-97% of the cells were gated.

#### **Binding of IgE from patient serum**

The induced cells were analyzed for binding IgE from patients' sera. The cell volume containing about 10<sup>6</sup> yeast cells was mixed with PBSF buffer (8 g/L NaCl, 0.2 g/L KCl, 1.44 g/L Na<sub>2</sub>HPO<sub>4</sub>, 0.24 g/L KH<sub>2</sub>PO<sub>4</sub>, 1 g/L bovine serum albumin, pH 7.4) to the total volume of 1 ml. The cells were centrifuged at 4,000 × g for 2 min and washed with 1 ml PBSF buffer. The cells were pelleted again and resuspended in 50 µl PBSF. 12.5 µl of cell suspension was mixed with 12.5 µl of positive or negative sera pool and incubated at room temperature for 1.5 hours with occasional mixing. The cells were washed with 1 ml ice-cold PBSF twice and mixed with biotinylated anti-IgE antibody diluted 1:200 in PBSF (total volume of 80 µl). For the double labeling the anti-C-myc antibody was added together with anti-IgE antibody at the dilution 1:10. The mix was incubated at 4°C for 1 hour. The cells were centrifuged and washed twice with ice-cold PBSF and mixed with streptavidin-phycoerythrin diluted 1:1000 in PBSF (total volume of 100 µl). The mix was incubated at 4°C for 30 min, the cells were washed twice with ice-cold PBSF, resuspended in 400 µl PBSF and analyzed by flow cytometry as above.

#### **Histamine release assay**

Peripheral blood mononuclear cells (PBMCs) from buffy coat blood (n = 3, non-allergic donor, anti-IgE responsive cells) were isolated by Lymphoprep gradient centrifugation. IgE was stripped off the basophils by a rebound in pH from 7.4 to 3.55 and back to 7.4. The PBMCs were then incubated 1 hour with wasp patient or control pool (non-allergic) serum to re-sensitize the basophils, which subsequently were mixed with

erythrocytes and challenged in glass fiber coated microtiter plates with control yeast expressing CD20 or yeast expressing phospholipase A1 (Ves v 1), hyaluronidase (Ves v 2) or antigen 5 (Ves v 5). Released histamine bound to the glass fibers was coupled to o-phthalaldehyde, stabilized by HClO<sub>4</sub>, and measured fluorometrically as described previously [37]. Results were expressed as percentage of total cellular histamine content and were considered positive when > 10%.

### Enzymatic assays

The enzymatic activity of hyaluronidase was measured by turbidimetric method of Dorfman [38]. The volumes were reduced for microtiter plate format. After incubation with hyaluronic acid the mixture was centrifuged to remove the cells and only supernatant was added to the acid albumin solution. Hyaluronidase from *S. hyalurolyticus* was used as a standard.

Phospholipase A1 enzymatic assay was performed using EnzChek<sup>®</sup> phospholipase A1 assay kit from Invitrogen according to the manufacturer's protocol. The controls without reagents addition were performed to ensure that the yeast cells did not fluoresce at the used wavelength. The Lecitase<sup>®</sup> Ultra (Invitrogen) was used as a standard.

The non-transformed yeast cells and the yeast cells expressing CD20 protein were used as the negative controls in both assays.

### Abbreviations

**FACS**: fluorescence activated cell sorting, a.k.a. flow cytometry; **c-myc tag**: a 10-amino acids long polypeptide protein tag with sequence EQKLISEEDL; **CCDs**: cross-reactive carbohydrate determinants; **AGA1 and AGA2**: two subunits of a-agglutinin complex in *Saccharomyces cerevisiae*; **GPI anchor**: glycosylphosphatidylinositol anchor; **Ves v 1**: phospholipase A1; allergen from *Vespula vulgaris* venom; **Ves v 2.0101**: hyaluronidase; allergen from *Vespula vulgaris* venom; **Ves v 2.0201**: allergen from *Vespula vulgaris* venom with similarity to Ves v 2.0101; function - unknown; **Ves v 5**: antigen 5; allergen from *Vespula vulgaris* venom; function unknown; **CD20**: B-lymphocyte antigen CD20; a non-glycosylated phosphoprotein expressed on the surface of all mature B-cells.

### Acknowledgements

The authors thank K. Dane Wittrup (MIT, USA) for the kind gift of the surface display vector and strain, Annette Bruun Jensen (Copenhagen University, Denmark) for showing how to remove venom sacs from vespids and Jørgen Fischer (SOS-Skadedyr, Denmark, <http://www.sos-skadedyr.dk>) for securing the access to the wasp nests. We also wish to acknowledge Per Stahl Skov (RefLab, Denmark), who kindly provided materials and facilities for performing histamine release analysis. This work was supported by grant 274-07-0148 from the Danish Research Council.

### Author details

<sup>1</sup>Center for Microbial Biotechnology, Institute of Systems Biology, Technical University of Denmark, Søtofts Plads 224, 2800 Kgs. Lyngby, Denmark.

<sup>2</sup>Dermato-Allergological Dept. K, CUH-Gentofte, Rigshospitalet Dept 7551, Blegdamsvej 9, 2100 København Ø, Denmark.

### Authors' contributions

IB initiated and performed the experimental study and drafted the manuscript. BJ participated in design of the study, carried out histamine

release assays and revised the manuscript. IBS and LKP participated in the design and coordination of the study and revised the manuscript. All authors read and approved the final manuscript.

### Competing interests

The authors declare that they have no competing interests.

Received: 27 July 2010 Accepted: 24 September 2010

Published: 24 September 2010

### References

1. Egger M, Hauser M, Himly M, Wopfner N, Wallner M, Ferreira F: Development of recombinant allergens for diagnosis and therapy. *Front Biosci (Elite Ed)* 2009, **1**:77-90.
2. Vrtala S: From allergen genes to new forms of allergy diagnosis and treatment. *Allergy* 2008, **63**(3):299-309.
3. Cramer R, Walter G: Selective enrichment and high-throughput screening of phage surface-displayed cDNA libraries from complex allergenic systems. *Comb Chem High Throughput Screen* 1999, **2**(2):63-72.
4. Edwards MR, Collins AM, Ward RL: The application of phage display in allergy research: characterization of IgE, identification of allergens and development of novel therapeutics. *Curr Pharm Biotechnol* 2001, **2**(3):225-240.
5. Bowley DR, Labrijn AF, Zwick MB, Burton DR: Antigen selection from an HIV-1 immune antibody library displayed on yeast yields many novel antibodies compared to selection from the same library displayed on phage. *Protein Eng Des Sel* 2007, **20**(2):81-90.
6. Wadle A, Mischo A, Imig J, Wullner B, Hensel D, Watzig K, Neumann F, Kubuschok B, Schmidt W, Old LJ, et al: Serological identification of breast cancer-related antigens from a *Saccharomyces cerevisiae* surface display library. *Int J Cancer* 2005, **117**(1):104-113.
7. Kondo A, Ueda M: Yeast cell-surface display-applications of molecular display. *Appl Microbiol Biotechnol* 2004, **64**(1):28-40.
8. Altmann F: The role of protein glycosylation in allergy. *Int Arch Allergy Immunol* 2007, **142**(2):99-115.
9. Kochuyt AM, Van Hoeyveld EM, Stevens EA: Prevalence and clinical relevance of specific immunoglobulin E to pollen caused by sting-induced specific immunoglobulin E to cross-reacting carbohydrate determinants in Hymenoptera venoms. *Clin Exp Allergy* 2005, **35**(4):441-447.
10. van der Veen MJ, van Ree R, Aalberse RC, Akkerdaas J, Koppelman SJ, Jansen HM, van der Zee JS: Poor biologic activity of cross-reactive IgE directed to carbohydrate determinants of glycoproteins. *J Allergy Clin Immunol* 1997, **100**(3):327-334.
11. Ballmer-Weber BK, Wutrich B, Wangorsch A, Fotisch K, Altmann F, Vieths S: Carrot allergy: double-blinded, placebo-controlled food challenge and identification of allergens. *J Allergy Clin Immunol* 2001, **108**(2):301-307.
12. Luttkopf D, Ballmer-Weber BK, Wutrich B, Vieths S: Celery allergens in patients with positive double-blind placebo-controlled food challenge. *J Allergy Clin Immunol* 2000, **106**(2):390-399.
13. Mittermann I, Zidarn M, Silar M, Markovic-Housley Z, Aberer W, Korosec P, Kosnik M, Valenta R: Recombinant allergen-based IgE testing to distinguish bee and wasp allergy. *J Allergy Clin Immunol* 2010, **125**(6):1300-1307, e1303.
14. Golden DB: Insect sting allergy and venom immunotherapy: a model and a mystery. *J Allergy Clin Immunol* 2005, **115**(3):439-447, quiz 448.
15. Müller UR: New developments in the diagnosis and treatment of hymenoptera venom allergy. *Int Arch Allergy Immunol* 2001, **124**(4):447-453.
16. de Graaf DC, Aerts M, Danneels E, Devreese B: Bee, wasp and ant venomics pave the way for a component-resolved diagnosis of sting allergy. *J Proteomics* 2009, **72**(2):145-154.
17. Hoffman DR, Jacobson RS: Allergens in hymenoptera venom XII: how much protein is in a sting? *Ann Allergy* 1984, **52**(4):276-278.
18. King TP, Alagon AC, Kuan J, Sobotka AK, Lichtenstein LM: Immunochemical studies of yellowjacket venom proteins. *Mol Immunol* 1983, **20**(3):297-308.
19. Müller UR: Recombinant Hymenoptera venom allergens. *Allergy* 2002, **57**(7):570-576.
20. Kolarich D, Léonard R, Hemmer W, Altmann F: The N-glycans of yellow jacket venom hyaluronidase and the protein sequence of its major isoform in *Vespula vulgaris*. *FEBS J* 2005, **272**(20):5182-5190.

21. King TP, Lu G, Gonzalez M, Qian N, Soldatova L: **Yellow jacket venom allergens, hyaluronidase and phospholipase: sequence similarity and antigenic cross-reactivity with their hornet and wasp homologs and possible implications for clinical allergy.** *J Allergy Clin Immunol* 1996, **98**(3):588-600.
22. Kischnick S, Weber B, Verdino P, Keller W, Sanders EA, Anspach FB, Fiebig H, Cromwell O, Suck R: **Bacterial fermentation of recombinant major wasp allergen Antigen 5 using oxygen limiting growth conditions improves yield and quality of inclusion bodies.** *Protein Expr Purif* 2006, **47**(2):621-628.
23. Monsalve RI, Lu G, King TP: **Expressions of recombinant venom allergen, antigen 5 of yellowjacket (*Vespula vulgaris*) and paper wasp (*Polistes annularis*), in bacteria or yeast.** *Protein Expr Purif* 1999, **16**(3):410-416.
24. Skov LK, Seppala U, Coen JJ, Crickmore N, King TP, Monsalve R, Kastrop JS, Spangfort MD, Gajhede M: **Structure of recombinant Ves v 2 at 2.0 Angstrom resolution: structural analysis of an allergenic hyaluronidase from wasp venom.** *Acta Crystallogr D Biol Crystallogr* 2006, **62**(6):595-604.
25. Kolarich D, Loos A, Leonard R, Mach L, Marzban G, Hemmer W, Altmann F: **A proteomic study of the major allergens from yellow jacket venoms.** *Proteomics* 2007, **7**(10):1615-1623.
26. Seismann H, Blank S, Cifuentes L, Braren I, Bredehorst R, Grunwald T, Ollert M, Spillner E: **Recombinant phospholipase A1 (Ves v 1) from yellow jacket venom for improved diagnosis of hymenoptera venom hypersensitivity.** *Clin Mol Allergy* 2010, **8**:7.
27. Hoffman DR: **Allergens in Hymenoptera venom. XXV: The amino acid sequences of antigen 5 molecules and the structural basis of antigenic cross-reactivity.** *J Allergy Clin Immunol* 1993, **92**(5):707-716.
28. Hoffman DR: **Allergens in hymenoptera venom. XXVI: The complete amino acid sequences of two vespid venom phospholipases.** *Int Arch Allergy Immunol* 1994, **104**(2):184-190.
29. Soldatova L, Kochoumian L, King TP: **Sequence similarity of a hornet (*D. maculata*) venom allergen phospholipase A1 with mammalian lipases.** *FEBS Lett* 1993, **320**(2):145-149.
30. Mattanovich D, Gasser B, Hohenblum H, Sauer M: **Stress in recombinant protein producing yeasts.** *J Biotechnol* 2004, **113**(1-3):121-135.
31. Huang D, Gore PR, Shusta EV: **Increasing yeast secretion of heterologous proteins by regulating expression rates and post-secretory loss.** *Biotechnol Bioeng* 2008, **101**(6):1264-1275.
32. Boder ET, Wittrup KD: **Yeast surface display for screening combinatorial polypeptide libraries.** *Nat Biotechnol* 1997, **15**:553-557.
33. Sørensen HP: **Towards universal systems for recombinant gene expression.** *Microb Cell Fact* 2010, **30**:9-27.
34. Ballou CE: **Isolation, characterization, and properties of *Saccharomyces cerevisiae* mnn mutants with nonconditional protein glycosylation defects.** *Methods Enzymol* 1990, **185**:440-470.
35. Seppala U, Selby D, Monsalve R, King TP, Ebner C, Roepstorff P, Bohle B: **Structural and immunological characterization of the N-glycans from the major yellow jacket allergen Ves v 2: the N-glycan structures are needed for the human antibody recognition.** *Mol Immunol* 2009, **46**(10):2014-2021.
36. Chao G, Lau WL, Hackel BJ, Sazinsky SL, Lippow SM, Wittrup KD: **Isolating and engineering human antibodies using yeast surface display.** *Nat Protoc* 2006, **1**(2):755-768.
37. Stahl Skov P, Norn S, Weeke B: **A new method for detecting histamine release.** *Agents Actions* 1984, **14**(3-4):414-416.
38. Dorfman A, (ed): **Methods in Enzymology.** Academic Press, Inc., New York 1955.

doi:10.1186/1475-2859-9-74

Cite this article as: Borodina et al.: Display of wasp venom allergens on the cell surface of *Saccharomyces cerevisiae*. *Microbial Cell Factories* 2010 **9**:74.

Submit your next manuscript to BioMed Central and take full advantage of:

- Convenient online submission
- Thorough peer review
- No space constraints or color figure charges
- Immediate publication on acceptance
- Inclusion in PubMed, CAS, Scopus and Google Scholar
- Research which is freely available for redistribution

Submit your manuscript at  
www.biomedcentral.com/submit

