

Replication of a distinct psoriatic arthritis risk variant at the *IL23R* locus

Psoriatic arthritis (PsA) is a chronic inflammatory arthritis associated with the presence of psoriasis. Although the majority of PsA genetic risk loci identified also confer risk for psoriasis, the difference in heritability between the two diseases suggests that there remain uncovered risk loci that are associated with PsA but not psoriasis (herein called PsA-specific loci).¹ Here we present an independent replication of a PsA-specific association to rs12044149 at the well-established psoriasis risk locus, *IL23R*, and confirm its independence of the previously reported psoriasis single-nucleotide polymorphism (SNP); rs9988642.^{2,3}

Following quality control, genotype data were available for Spanish, Cretan, German and UK PsA cases (914) and controls (6945), independent of those tested previously² for rs12044149 and rs9988642. All PsA case subjects were recruited from rheumatology clinics and were diagnosed by a rheumatologist. Genotype data were generated using the Life Technologies TaqMan chemistry on the QuantStudio platform. Data were also available for samples that had been previously genotyped. Case-control association testing was performed separately for each dataset using logistic regression in PLINK. This was followed by a meta-analysis of the summary statistics, using an inverse-variance fixed-effects model (table 1). The association of rs12044149 with PsA was replicated ($p=4.03 \times 10^{-6}$) and remained significant after including rs9988642 as a covariate ($p_{\text{cond}}=4.86 \times 10^{-6}$). Meta-analysis of this data with that of our previous Immunochip study reached genome-wide significance ($p_{\text{meta}}=4.76 \times 10^{-20}$) in 2876 cases and 15 868 controls (table 1). For the previously reported psoriasis variant, rs9988642,³ only modest association was found with PsA in the replication meta-analysis ($p=0.04$), and did not reach genome-wide significance upon meta-analysis of the combined PsA dataset ($p=4.61 \times 10^{-4}$) (table 1).

We investigated differences between PsA and psoriasis by combining our data with a subset of the psoriasis WTCCC2 study,⁴ excluding patients with known PsA (1784 psoriasis cases, 5175 controls). Here, rs9988642 was significantly associated with psoriasis ($p=1.0 \times 10^{-7}$) and remained so after conditioning for rs12044149 ($p_{\text{cond}}=1.63 \times 10^{-5}$). The effect estimates of rs12044149 for PsA and psoriasis were significantly different ($p=2.0 \times 10^{-3}$), when tested using multinomial logistic regression in Stata. Direct comparison of the PsA and psoriasis genotypes revealed a significant association with an increased risk of PsA with rs12044149 ($p=4.52 \times 10^{-4}$, OR=1.3). While we cannot exclude the possibility of undiagnosed PsA cases in the psoriasis group, their inclusion would have biased the results to the null hypothesis of no difference in the association statistics between PsA and psoriasis. These results support previously reported evidence that the association signals for the *IL23R* variants rs12044149 and rs9988642 are independent of each other and that the association to rs12044149 is specific to PsA.^{2,5}

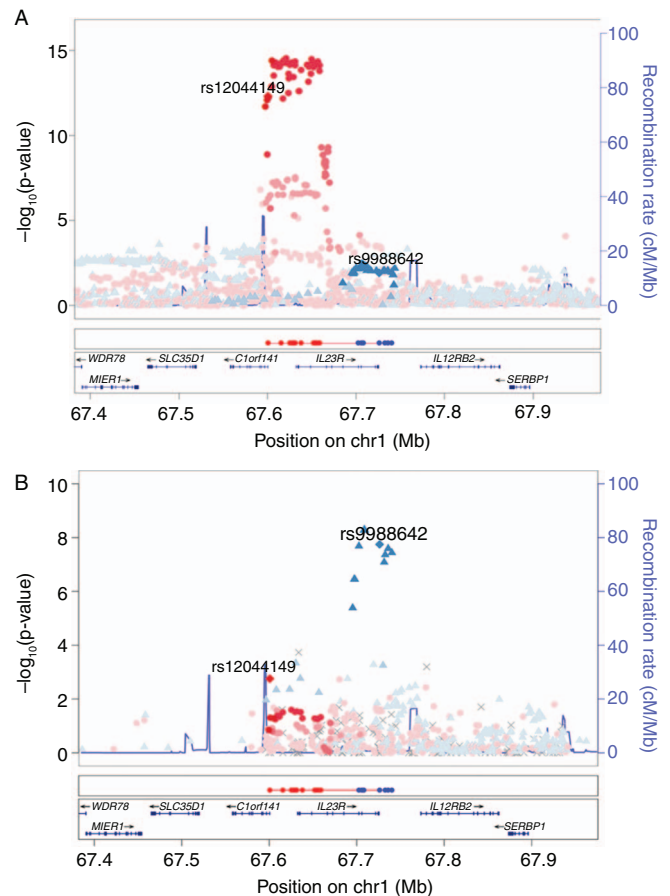


Figure 1 (A) Association of *IL23R* variants in psoriatic arthritis (PsA) Immunochip study (1962 cases, 8923 controls). (B) Association of *IL23R* variants in psoriasis Immunochip study (2997 cases, 9183 controls). Credible single-nucleotide polymorphism sets are depicted below each plot for the rs12044149 (red) and rs9988642 (blue) association signals.

A Bayesian refinement method was applied to define credible SNP sets based on each effect, as described previously.² These were localised to regulatory features using data from the Roadmap Epigenomics Project⁶ and the online genetic and epigenetic finemapping data portal⁷ (figure 1). Credible SNPs ($n=13$) for the PsA-specific associated SNP mapped to promoter and enhancer regions within memory CD8⁺ T cells, which we have previously reported to be critical for PsA.² By contrast, credible SNPs based on the psoriasis association ($n=7$) did not overlap with regulatory elements and one, rs11209026, was found to cause a missense mutation, resulting in an Arg381Gln substitution.⁸ This could suggest the involvement of different functional mechanisms for the PsA and psoriasis associations.

In conclusion, we have replicated a PsA-specific association at the *IL23R* locus within an independent population, and confirm

Table 1 Summary statistics for Immunochip, replication and meta-analysis of PsA and psoriasis variants at *IL23R*

SNP	Minor/major allele	Replication meta-analysis				Immunochip		Meta-analysis (All)			
		p Value	OR	I ²	Q	p Value	OR	p Value	OR	I ²	Q
rs12044149	T/G	4.03E-06	1.33	10.15	0.34	2.25E-15	1.36	4.76E-20	1.35	0	0.49
rs9988642	C/T	0.04	0.78	34.51	0.21	4.51E-03	0.81	4.61E-04	0.80	13.76	0.33

I², heterogeneity index for ORs; PsA, psoriatic arthritis; Q, Cochrane's Q statistic for heterogeneity of ORs; SNP, single-nucleotide polymorphism.

that the association with rs12044149 is distinct from the psoriasis *IL23R* variant, rs9988642. Currently, five robust PsA-specific loci have been identified, including HLA-B,² chromosome 5q31,² *PTPN22*⁹ and *TNFAIP3*.⁵ Such associations can provide potential clinical benefits in disease-risk estimation and linking genetics with therapeutic targets.

Ashley Budu-Aggrey,^{1,2} John Bowes,¹ Sabine Loehr,³ Steffen Uebe,³ Maria I Zervou,⁴ Philip Helliwell,⁵ Anthony W Ryan,⁶ David Kane,⁷ Eleanor Korendowych,⁸ Emiliano Giardina,⁹ Jonathan Packham,¹⁰ Ross McManus,⁶ Oliver FitzGerald,¹¹ Neil McHugh,⁸ Frank Behrens,¹² Harald Burkhardt,¹² Ulrike Huffmeier,³ Pauline Ho,^{1,13} Javier Martin,¹⁴ Santos Castañeda,¹⁵ George Goulielmos,⁴ Andre Reis,³ Anne Barton^{1,2,13}

¹Arthritis Research UK Centre for Genetics and Genomics, Centre for Musculoskeletal Research, The University of Manchester, UK

²NIHR Manchester Musculoskeletal Biomedical Research Unit, Central Manchester Foundation Trust and University of Manchester, Manchester Academy of Health Sciences, Manchester, UK

³Institute of Human Genetics, Friedrich-Alexander-Universität Erlangen-Nürnberg, Erlangen, Germany

⁴Laboratory of Molecular Medicine and Human Genetics, Department of Internal Medicine, University of Crete, Heraklion, Greece

⁵NIHR-Leeds Musculoskeletal Biomedical Research Unit Leeds Institute of Rheumatic and Musculoskeletal Medicine, University of Leeds, Leeds, UK

⁶Department of Clinical Medicine, Institute of Molecular Medicine, Trinity College Dublin, Dublin, Ireland

⁷Department of Rheumatology, Adelaide and Meath Hospital and Trinity College Dublin, Ireland

⁸Royal National Hospital for Rheumatic Diseases and Department Pharmacy and Pharmacology, University of Bath, Bath, UK

⁹Department of Biomedicine and Prevention, University of Rome 'Tor Vergata' and Laboratory of Molecular Genetics UILDm, Fondazione Santa Lucia IRCCS, Rome, Italy

¹⁰Rheumatology Department, Haywood Hospital, Health Services Research Unit, Institute of Science and Technology in Medicine, Keele University, Stoke on Trent, UK

¹¹Department of Rheumatology, St. Vincent's University Hospital, UCD School of Medicine and Medical Sciences and Conway Institute of Biomolecular and Biomedical Research, University College Dublin, Dublin, Ireland

¹²Division of Rheumatology and Fraunhofer IME-Project-Group Translational Medicine and Pharmacology, Goethe University, Frankfurt, Germany

¹³The Kellgren Centre for Rheumatology, Central Manchester Foundation Trust, NIHR Manchester Biomedical Research Centre, Manchester, UK

¹⁴CSIC, Instituto de Parasitología y Biomedicina Lopez-Neyra, Granada, Spain

¹⁵Department of Rheumatology, Hospital La Princesa, IIS-IPrincesa, Madrid, Spain

Correspondence to Professor Anne Barton, Arthritis Research UK Centre for Genetics and Genomics, The University of Manchester, Manchester M13 9PT, UK; anne.barton@manchester.ac.uk

Acknowledgements We thank Arthritis Research UK for their support (grant ref 20385).

Funding This report includes independent research funded by the NIHR Manchester Musculoskeletal Biomedical Research Unit. AB-A is funded by a studentship from the MRC. HB and FB were supported by the German Federal Ministry of Education and

Research (ArthroMark 01EC1401C) as were UH and AR (METARTHROS 01EC1407A).

Disclaimer The views expressed in the publication are those of the authors and not necessarily those of the NHS, the National Institute of Health Research or the Department of Health.



OPEN ACCESS

Competing interests None declared.

Provenance and peer review Not commissioned; externally peer reviewed.

Open Access This is an Open Access article distributed in accordance with the terms of the Creative Commons Attribution (CC BY 4.0) license, which permits others to distribute, remix, adapt and build upon this work, for commercial use, provided the original work is properly cited. See: <http://creativecommons.org/licenses/by/4.0/>

To cite Budu-Aggrey A, Bowes J, Loehr S, *et al.* *Ann Rheum Dis* Published Online First: [please include Day Month Year] doi:10.1136/annrheumdis-2016-209290

Received 29 January 2016

Revised 29 February 2016

Accepted 3 March 2016

Ann Rheum Dis 2016;**0**:1–2. doi:10.1136/annrheumdis-2016-209290

REFERENCES

- Chandran V, Schentag CT, Brockbank JE, *et al.* Familial aggregation of psoriatic arthritis. *Ann Rheum Dis* 2009;**68**:664–7.
- Bowes J, Budu-Aggrey A, Huffmeier U, *et al.* Dense genotyping of immune-related susceptibility loci reveals new insights into the genetics of psoriatic arthritis. *Nat Commun* 2015;**6**:6046.
- Tsoi LC, Spain SL, Knight J, *et al.* Identification of 15 new psoriasis susceptibility loci highlights the role of innate immunity. *Nat Genet* 2012;**44**:1341–8.
- Strange A, Capon F, Spencer CC, *et al.* A genome-wide association study identifies new psoriasis susceptibility loci and an interaction between HLA-C and ERAP1. *Nat Genet* 2010;**42**:985–90.
- Stuart PE, Nair RP, Tsoi LC, *et al.* Genome-wide Association Analysis of Psoriatic Arthritis and Cutaneous Psoriasis Reveals Differences in Their Genetic Architecture. *Am J Hum Genet* 2015;**97**:816–36.
- Kundaje A, Meuleman W, Ernst J, *et al.* Roadmap Epigenomics Consortium. Integrative analysis of 111 reference human epigenomes. *Nature* 2015;**518**:317–30.
- Farh KK, Marson A, Zhu J, *et al.* Genetic and epigenetic fine mapping of causal autoimmune disease variants. *Nature* 2015;**518**:337–43.
- Libioulle C, Louis E, Hansoul S, *et al.* Novel Crohn disease locus identified by genome-wide association maps to a gene desert on 5p13.1 and modulates expression of PTGER4. *PLoS Genet* 2007;**3**:e58.
- Bowes J, Loehr S, Budu-Aggrey A, *et al.* PTPN22 is associated with susceptibility to psoriatic arthritis but not psoriasis: evidence for a further PsA-specific risk locus. *Ann Rheum Dis* 2015;**74**:1882–5.



Replication of a distinct psoriatic arthritis risk variant at the *IL23R* locus

Ashley Budu-Aggrey, John Bowes, Sabine Loehr, Steffen Uebe, Maria I Zervou, Philip Helliwell, Anthony W Ryan, David Kane, Eleanor Korendowych, Emiliano Giardina, Jonathan Packham, Ross McManus, Oliver FitzGerald, Neil McHugh, Frank Behrens, Harald Burkhardt, Ulrike Huffmeier, Pauline Ho, Javier Martin, Santos Castañeda, George Goulielmos, Andre Reis and Anne Barton

Ann Rheum Dis published online March 25, 2016

Updated information and services can be found at:
<http://ard.bmj.com/content/early/2016/03/25/annrheumdis-2016-209290>

These include:

References

This article cites 9 articles, 2 of which you can access for free at:
<http://ard.bmj.com/content/early/2016/03/25/annrheumdis-2016-209290#BIBL>

Open Access

This is an Open Access article distributed in accordance with the terms of the Creative Commons Attribution (CC BY 4.0) license, which permits others to distribute, remix, adapt and build upon this work, for commercial use, provided the original work is properly cited. See:
<http://creativecommons.org/licenses/by/4.0/>

Email alerting service

Receive free email alerts when new articles cite this article. Sign up in the box at the top right corner of the online article.

Topic Collections

Articles on similar topics can be found in the following collections
[Open access](#) (528)

Notes

To request permissions go to:
<http://group.bmj.com/group/rights-licensing/permissions>

To order reprints go to:
<http://journals.bmj.com/cgi/reprintform>

To subscribe to BMJ go to:
<http://group.bmj.com/subscribe/>