

This discussion paper is/has been under review for the journal Atmospheric Chemistry and Physics (ACP). Please refer to the corresponding final paper in ACP if available.

Modelling atmospheric OH-reactivity in a boreal forest ecosystem

D. Mogensen¹, S. Smolander¹, A. Sogachev², L. Zhou¹, V. Sinha^{3,4}, A. Guenther⁵, J. Williams³, T. Nieminen¹, M. Kajos¹, J. Rinne¹, M. Kulmala¹, and M. Boy¹

¹Division of Atmospheric Sciences, Department of Physics, P.O. Box 48, University of Helsinki, 00014, Finland

²Wind Energy Division, Risø National Laboratory for Sustainable Energy, Technical University of Denmark, Building 118, Box 49, 4000, Roskilde, Denmark

³Max Planck Institute of Chemistry, J. Becher Weg 27, 55128 Mainz, Germany

⁴Indian Institute of Science Education and Research (IISER) Mohali, MGSIPAP Complex, Sector 26, Chandigarh 160019, India

⁵National Center for Atmospheric Research, Boulder, CO 80307, USA

Received: 11 March 2011 – Accepted: 14 March 2011 – Published: 17 March 2011

Correspondence to: M. Boy (michael.boy@helsinki.fi)

Published by Copernicus Publications on behalf of the European Geosciences Union.

Modelling atmos. OH-reactivity in boreal forest ecosystem

D. Mogensen et al.

Title Page

Abstract

Introduction

Conclusions

References

Tables

Figures

⏪

⏩

◀

▶

Back

Close

Full Screen / Esc

Printer-friendly Version

Interactive Discussion

Abstract

We have modelled the total atmospheric OH-reactivity in a boreal forest and investigated the individual contributions from gas phase inorganic species, isoprene, monoterpenes, and methane along with other important VOCs. Daily and seasonal variation in OH-reactivity for the year 2008 was examined as well as the vertical OH-reactivity profile. We have used SOSA; a one dimensional vertical chemistry-transport model (Boy et al., 2011) together with measurements from Hyytiälä, SMEAR II station, Southern Finland, conducted in August 2008. Model simulations only account for ~30–50% of the total measured OH sink, and in our opinion, the reason for missing OH-reactivity is due to unmeasured unknown BVOCs, and limitations in our knowledge of atmospheric chemistry including uncertainties in rate constants. Furthermore, we found that the OH-reactivity correlates with both organic and inorganic compounds and increases during summer. The summertime canopy level OH-reactivity peaks during night and the vertical OH-reactivity decreases with height.

1 Introduction

The hydroxyl radical (OH) is the most important oxidant in the atmosphere. Understanding both the sources and sinks of OH is key to assessing the atmosphere's capacity to oxidise gas phase organic trace gases and produce secondary organic aerosols (SOA). While the production term during daytime for OH is reasonably well constrained by radiometer measurements (JO^1D), the sink term (total OH-reactivity) was until recently only indirectly determined by summing the contributions of available measurements.

The application of Laser Induced Fluorescence (LiF) has allowed total OH lifetime and hence total OH-reactivity (OH-reactivity = $1/\text{OH lifetime}$) to be determined directly in campaigns such as PROPHET 2000 (di Carlo et al., 2004), INTEX-B (Mao et al., 2009), PMTACS-NY2001 (Ren et al., 2003) and PRD (Lou et al., 2010). Measuring the

Modelling atmos. OH-reactivity in boreal forest ecosystem

D. Mogensen et al.

Title Page

Abstract

Introduction

Conclusions

References

Tables

Figures

⏪

⏩

◀

▶

Back

Close

Full Screen / Esc

Printer-friendly Version

Interactive Discussion



**Modelling atmos.
OH-reactivity in
boreal forest
ecosystem**

D. Mogensen et al.

[Title Page](#)[Abstract](#)[Introduction](#)[Conclusions](#)[References](#)[Tables](#)[Figures](#)[⏪](#)[⏩](#)[◀](#)[▶](#)[Back](#)[Close](#)[Full Screen / Esc](#)[Printer-friendly Version](#)[Interactive Discussion](#)

total OH-reactivity using LiF is difficult since it requires the rapid measurement of OH at very low concentrations and requires complicated corrections due to atmospheric NO to be taken into account. In this study, we use a dataset acquired using an alternative method namely the comparative reactivity approach (Sinha et al., 2008). This technique circumvents the difficult task of measuring OH radicals directly and instead relies on the accurate measurement of pyrrole at high mixing ratios (>15 ppbV) using a Proton Transfer Reaction – Mass Spectrometer (PTR-MS) (Sinha et al., 2010). Since measurement techniques provide data at a specific point for a limited period, modelling is needed in order to develop an overall spatial and temporal understanding of the total reactivity term and test the accuracy of chemical parametrizations by comparison with measurements.

OH-reactivity has previously been calculated in models, albeit with limited chemistry; (e.g. Apel et al., 2010) (including 85 chemical species, and 196 reactions), and from field measurements by adding the OH-reactivity of the individually measured OH sinks (e.g. NMHCs, CO, CH₄, NO_x) (Chatani et al., 2009; Lou et al., 2010; Sinha et al., 2010; di Carlo et al., 2004).

In this paper, we present simulated OH-reactivities for one year in a boreal forest. The work focuses on the OH-reactivity partly in order to investigate how well we understand the boundary layer OH chemistry and partly in order to gain a better understanding of the aerosol-precursors formed due to the reaction of volatile organic compounds (VOCs) and OH. We have used data from the SMEAR II station, Hyytiälä, Southern Finland. We simulated over boreal forest, since these cover a significant part of the Earth's surface and emit large amounts of volatile organic compounds. In order to ascertain how well we understand the OH initiated photochemical processes, we have compared our calculated OH-reactivity with measured ambient OH-reactivity from the BFORM (Boreal Forest OH Reactivity Measurements) campaign, August 2008 (Sinha et al., 2010) during which the total atmospheric OH-reactivity was measured using the Comparative Reactivity Method (Sinha et al., 2008). However, the measured OH-reactivity data will not be analysed in details here, but can be found in the paper by

Sinha et al. (2010). We also present the modelled contributions to the OH-reactivity by several different types of trace gases, discuss the seasonal variation and present the vertical OH-reactivity profile.

2 Model simulations

5 The one-dimensional chemistry-transport model SOSA (Model to Simulate the concentrations of Organic vapours and Sulphuric Acid) was used in the calculations of the OH-reactivity (Boy et al., 2011). This vertical transport model is based on the coupled plant-atmosphere boundary-layer model SCADIS (Sogachev et al., 2002, 2005; Sogachev and Panferov, 2006; Sogachev, 2009). Measured data from the Station to
10 Measure Ecosystem-Atmosphere Relation (SMEAR II) at Hyytiälä, Southern Finland is used as input. A detailed description of the station and instrumentation can be found under Kulmala et al. (2001) and under <http://www.atm.helsinki.fi/SMEAR/index.php>, and a description of measurements used in SOSA can be found under Boy et al. (2011).

2.1 Meteorology and transport

15 The meteorology is described by a one-dimensional version of the SCADIS model (Sogachev et al., 2002; Sogachev and Panferov, 2006; Boy et al., 2011). Based on the Reynolds averaged Navier-Stokes (RANS) equations, SCADIS employs a turbulent kinetic energy – specific dissipation closure scheme. The model includes prognostic equations for these variables and for wind, heat and moisture. Involving a number of
20 parametrizations the model is capable of describing in a realistic manner the physical processes forming the meteorological regime within and above the forest canopy under different environmental conditions. Further, measured meteorological data (temperature, humidity and wind speed, at 4, 8, 16, 33, 50 and 67 m heights) from SMEAR II mast are used for nudging the model variables towards the observations. SCADIS
25 describes the atmospheric boundary layer evolution and the mixing of the chemical

Modelling atmos. OH-reactivity in boreal forest ecosystem

D. Mogensen et al.

Title Page

Abstract

Introduction

Conclusions

References

Tables

Figures

⏪

⏩

◀

▶

Back

Close

Full Screen / Esc

Printer-friendly Version

Interactive Discussion



species in a model domain of 51 layers. The resolution is higher near the ground, and the separation between layers increases progressively towards the model top, which is at 3000 m.

2.2 Emission

The emissions of organic vapours from the canopy were calculated with a modification of the model MEGAN (Model of Emissions of Gases and Aerosols from Nature), version 2.04 (Guenther et al., 2006). This model, which has been implemented in SOSA, estimates landscape average emission factors for a specific location by combining estimates of plant species composition and representative species-specific emission factors. For each time step, emissions driven by changes in calculated leaf temperature and incident solar radiation on sun and shade leaves at different canopy levels, are calculated. We have assumed the landscape to be composed of Scots pine and use standard emission potentials by Hakola et al. (2006). This is a good first order approximation even though it neglects the influence of other species in the concentration footprint (e.g. Haapanala et al., 2007). Also 16 different canopy characteristics, such as leaf data together with scattering and reflection coefficients are used to describe the needle forest. The emission scheme has been verified by comparing VOC gas concentrations in the paper by Boy et al. (2011), but also in this publication (Sect. 4.3) we show good agreement between measured and modelled monoterpene concentrations.

2.3 Chemistry

The chemistry is calculated using the Kinetic PreProcessor (KPP) (Damian et al., 2002). Most chemical reaction equations were selected from the Master Chemical Mechanism <http://mcm.leeds.ac.uk/MCM/>. The chemistry includes 2140 reactions, and a total of 761 chemical species representing the complete reaction paths for isoprene, 2-methyl-3-buten-2-ol, α -pinene, β -pinene, methanol, acetone, acetaldehyde, formaldehyde, methane and relevant inorganic reactions. The photochemistry has

Modelling atmos. OH-reactivity in boreal forest ecosystem

D. Mogensen et al.

Title Page

Abstract

Introduction

Conclusions

References

Tables

Figures

⏪

⏩

◀

▶

Back

Close

Full Screen / Esc

Printer-friendly Version

Interactive Discussion



been improved by calculating the photo dissociation constants more precisely using data from Atkinson et al. (1992) and spectral irradiance measurements from the SMEAR II station (Boy et al., 2002). In some cases we also used more recently obtained rate constants, e.g. for the reaction between acetone and OH. Measured gas concentrations from SMEAR II are used as input. Furthermore, condensation sinks for sulphuric acid and nitric acid, based on DMPS (Differential Mobility Particle Sizer) and APS (Aerodynamic Particle Sizer) data, are included (Boy et al., 2003).

OH-reactivity related to a single reaction is calculated by multiplying the reaction rate coefficient by the concentration of the other reactant. The total OH-reactivity is calculated as the sum of these, over the set of reactions with OH as the other reactant:

$$R_{\text{OH}} = \sum_{\text{Reactions}} k_{\text{OH}+X} \times [X] \quad (\text{R1})$$

where R_{OH} is the OH-reactivity, and $k_{\text{OH}+X}$ is the bimolecular rate constant for the chemical reaction between the OH radical and the chemical species X , where the concentration of X is given by $[X]$. We then sum over all the OH sink reactions.

The reaction equation files, from the Master Chemical Mechanism, are text files in KPP-format. We wrote a script in the Python programming language (using the pattern matching operations in the regular expressions module) to find the bimolecular reactions including OH, and to postprocess them into additional “bookkeeping reactions”, to calculate the time evolution of the OH-reactivity along with the time evolution of the real chemicals. In the results, we use 30 min averages of OH-reactivity. (Sensitivity studies with averaging over different time slots showed no significant difference in results.)

3 Measurements

A list of measurements conducted during the OH-reactivity measured period can be found under Sinha et al. (2010) and further details about these can be found under Hari and Kulmala (2005).

Modelling atmos. OH-reactivity in boreal forest ecosystem

D. Mogensen et al.

Title Page

Abstract

Introduction

Conclusions

References

Tables

Figures

⏪

⏩

◀

▶

Back

Close

Full Screen / Esc

Printer-friendly Version

Interactive Discussion



3.1 OH-reactivity measurements

OH-reactivity was measured in August 2008 during the Boreal Forest OH-Reactivity Measurement (BFORM) campaign using the comparative reactivity instrument described in detail by Sinha et al. (2008). Briefly, the measurement is an in situ competitive kinetics experiment in which a proton transfer reaction mass spectrometer (PTR-MS) is coupled to a turbulent flow glass reactor. Pyrrole (C_4H_5N) is introduced into the reactor and its concentration (say C1) is monitored with a PTR-MS, in the air exiting the reactor. Then, synthetically generated OH radicals ($[OH] < [pyrrole]$) are introduced into the reactor at a constant rate to react with pyrrole. This causes the initial concentration of pyrrole to decrease to concentration C2. When ambient air is introduced into the reactor, the various species present in it compete with pyrrole for the OH, so that the concentration of pyrrole increases to C3. Comparing the amount of pyrrole exiting the reactor in the zero air (C2) and ambient air (C3), allows the introduced air samples OH-reactivity to be determined, provided the system is suitably calibrated for pyrrole (Sinha et al., 2009). The detection limit for the OH-reactivity measurements was $3.5 s^{-1}$, while the overall uncertainty of the measured OH reactivity is $\sim 20\%$. Further details regarding technical aspects and sampling can be found in Sinha et al. (2010).

3.2 VOC measurements

VOC measurements were conducted using the PTR-MS that operates permanently at the SMEAR II station (Taipale et al., 2008). Ambient air was sampled from a scaffolding tower located approximately 20 m from the OH-reactivity sampling. Samples were taken from three heights: 4, 14, and 22 m. The PTR-MS measured masses 33, 59, 45, 47, 61, 69, 71, 73, 87, 93, 101, 137 and 81, and 169 which have been attributed to methanol, sum of acetone and propanal, acetaldehyde, formic acid, acetic acid, isoprene, sum of methacrolein and methyl vinyl ketone, methyl ethyl ketone, methyl butenol, toluene, sum of cis-3 hexenol and hexanal, sum of monoterpenes, and pinonaldehyde, respectively. These identifications are in keeping with previous PTR-MS

Modelling atmos. OH-reactivity in boreal forest ecosystem

D. Mogensen et al.

Title Page

Abstract

Introduction

Conclusions

References

Tables

Figures

⏪

⏩

◀

▶

Back

Close

Full Screen / Esc

Printer-friendly Version

Interactive Discussion



studies although minor contributions from other species cannot be ruled out (Taipale et al., 2008; de Gouw and Warneke, 2007). The overall uncertainty of the VOC measurements was estimated to be 15% (Taipale et al., 2008). Ambient air measurements were available daily for the following hours: 1–2, 4–5, 7–8, 10–11, 13–14, 16–17, 19–20, 22–23, as chamber and flux measurements were conducted during the other time spans.

4 Results and discussion

The OH-reactivity was measured from the 12 August evening until the morning of the 28 August 2008. Due to a pollution event on the 27th, we only compare our modelled data with measured data in the period 13th at 00:00 o'clock to the 26th at 24:00 o'clock. We refer to this period as “Period A”. Due to a generally higher measured OH-reactivity in the first part of Period A, we further separate this into two sub-periods: “Period B” starting from the 13th at 00:00 o'clock to the 18th at 24:00 o'clock, and “Period C” starting from the 19th at 00:00 o'clock to the 26th at 24:00 o'clock. We will analyse these subperiods separately and compare them to the full period (Period A). The canopy height in Hyytiälä is set to 15 m in our model. The OH-reactivity was measured at a height of approximately 12–14 m and modelled at the height of 14 m if not mentioned otherwise.

In Fig. 1, 30 min resolution measured and modelled OH-reactivity in August 2008 is presented. The average modelled OH-reactivity in Period A is calculated to be 2.5 s^{-1} with the lowest value of 1.7 s^{-1} and the highest value of 4.4 s^{-1} showing little variability in contrast to the measured data where great fluctuation is observed over short time scales. This high measured fluctuations could be due to locally strong turbulence and time-depending emission peaks which are not included in our model, that assumes a more homogeneous forest. However, we do not observe any large fluctuation in total sum of measured monoterpenes.

Modelling atmos. OH-reactivity in boreal forest ecosystem

D. Mogensen et al.

Title Page

Abstract

Introduction

Conclusions

References

Tables

Figures

⏪

⏩

◀

▶

Back

Close

Full Screen / Esc

Printer-friendly Version

Interactive Discussion



**Modelling atmos.
OH-reactivity in
boreal forest
ecosystem**

D. Mogensen et al.

Title Page

Abstract

Introduction

Conclusions

References

Tables

Figures

⏪

⏩

◀

▶

Back

Close

Full Screen / Esc

Printer-friendly Version

Interactive Discussion



Modelled, measured and missing OH-reactivity for the three periods are listed in Table 1. The average modelled OH-reactivity in Period B is 2.3s^{-1} and in Period C 2.6s^{-1} leading to a missing OH-reactivity of 6.2s^{-1} ($\sim 70\%$) and 2.5s^{-1} ($\sim 50\%$), respectively. On average we underestimate the total OH-reactivity by $\sim 60\%$, but for extensive periods the modelled reactivity is within the uncertainty of the measurement value. In some periods the model overestimates the measurements.

The large values of missing OH-reactivity over the two weeks arise from a more or less constant modelled OH-reactivity within the whole Period A, but a much higher measured OH-reactivity in the first week (8.6s^{-1}) than in the last week (5.1s^{-1}). Analysing the measured and modelled gas concentrations, it was found that the concentrations of those species contributing significantly to the OH-reactivity, were constant during the entire selected Period A, or slightly lower during Period B than Period C. This automatically results in higher modelled OH-reactivity in Period C. The temperature difference between the two periods was small; on average it was 1.3K colder during the last week. As previous hydrocarbon flux measurements shows, emissions decrease with temperature, which will decrease the OH-reactivity (Rinne et al., 2007). The emission flux of monoterpenes from the canopy is modelled to be higher in period B, which could mean that we have an underestimation in the model of monoterpenes going out of the canopy. However, a decrease in temperature could also decrease the boundary layer height, which will cause an increase in OH-reactivity. The vertical potential temperature is presented in Fig. 2. The boundary layer during day is found between $\sim 500\text{--}1400\text{m}$, and during night between $\sim 100\text{--}300\text{m}$, with an exception of the night between the 17th and the 18th, where the boundary layer drops significantly together with a sharp drop in temperature. As also mentioned in the detailed paper on the measurements from the BFORM campaign, the missing OH reactivity fraction was highest on this particular night and not during the mentioned pollution event on 27 August (Sinha et al., 2010).

4.1 Contributions to the OH-reactivity

The modelled OH-reactivity depends on the chemical contributions. In Fig. 3, calculated contributions to the OH-reactivity from the 13 to 27 August 2008 are visualized. 12 compounds are included in “Inorganics”; CO, O₃, H₂, H₂O₂, HO₂, NO, NO₂, NO₃, HO₂NO₂, HONO, HNO₃, and SO₂, 10 compounds are included in “Monoterpenes”; α -pinene, β -pinene, Δ^3 -carene, limonene, sabinene, camphene, ocimene, myrcene, cineole and “other monoterpenes”, while 415 compounds are included in “Other organics”, with the label referring to include other organics than monoterpenes, isoprene and methane. According to our simulations the largest OH sink in August is organic compounds, which makes up $\sim 60\%$ of the total calculated OH-reactivity. The most important contributing VOCs here are monoterpenes ($\sim 0.6\text{ s}^{-1}$), isoprene ($\sim 0.2\text{ s}^{-1}$), and methane ($\sim 0.2\text{ s}^{-1}$). The inorganic contribution is also very significant with an OH-reactivity of $\sim 1.0\text{ s}^{-1}$, with CO contributing with about 65% of the total inorganic contribution to the OH-reactivity. The sum of the contributions from the inorganic compounds and methane makes up 18% of the measured OH-reactivity, which is consistent with the findings by Sinha et al. (2010).

In Fig. 4, measured and modelled OH-reactivities including contributions to the modelled OH-reactivity for Period A are presented as hourly averaged data. For the measured reactivity, 10 min resolution data has been used. Error bars of 20% on the measured data have been determined by Sinha et al. (2010). For the SOSA model there are too many parameters included in order for us to give a good uncertainty estimate, and therefore no error bars have been included on the modelled data. However, later on we perform a small sensitivity study on the rate coefficients included (see Sect. 4.4). Sinha et al. (2010) also calculated the contribution from monoterpenes to the OH-reactivity. However, while we find the contribution to be of 0.6 s^{-1} , Sinha et al. (2010) find it to be of 1.0 s^{-1} . This is due to the differences in calculation; Sinha et al. (2010) calculates the contribution using PTR-MS mass signals and a weighted average of the rate coefficients for the different monoterpenes, while we specifically

Modelling atmos. OH-reactivity in boreal forest ecosystem

D. Mogensen et al.

Title Page

Abstract

Introduction

Conclusions

References

Tables

Figures

⏪

⏩

◀

▶

Back

Close

Full Screen / Esc

Printer-friendly Version

Interactive Discussion

model the individual monoterpene concentrations and their respective contributions to the OH-reactivity. Due to large differences in rate constants, it is easy to get very different contributions from monoterpenes if a wrong monoterpene is assumed to dominate. Model simulations found that the order of OH-reactivity contributions from the individual monoterpenes is as follows: Δ^3 -carene \sim α -pinene $>$ β -pinene $>$ camphene \sim “other monoterpenes” $>$ cineole \sim sabinene $>$ limonene $>>$ ocimene \sim myrcene.

4.2 Seasonal variation

In Fig. 5, modelled contributions to the OH-reactivity throughout the year 2008 are shown. During the winter months the OH-reactivity sink is dominated by inorganic compounds, whereas during summer, where the OH-reactivity and VOC emissions peak, the overall sink is dominated by organic compounds. Throughout the year, CO is the most contributing inorganic species, closely followed by NO₂. Since CO is the most contributing inorganic species throughout the year, the inorganic OH-reactivity pattern follows the CO concentration seasonal pattern, with higher levels in winter and spring and lower in summer.

The largest difference in monthly OH-reactivity is found between the months of March (lowest) and July (highest), with the difference being $\sim 1.3 \text{ s}^{-1}$. Due to a still high missing fraction of unknown organic molecules in our model, we would expect that the missing OH-reactivity would be greatest in summer when the temperature is higher and the emissions larger (Goldstein and Galbally, 2007). According to our model, the OH-reactivity was expected to increase significantly from April 2008 to May 2008, and then decrease in June 2008. This is mainly due to much lower temperatures and boundary layer in May 2008, and to low contributions from isoprene in June. Comparisons of measured and modelled isoprene concentration for 2008 indicate that the model underestimates the isoprene concentration in June. Previous studies have shown that Scot pine forests, such as the Hyytiälä site, have a low isoprene emission (Rinne et al., 2009). However, in the area contributing to the measured concentrations, isoprene emitting tree species, such as Norway spruce, European aspen and willows are more

Modelling atmos. OH-reactivity in boreal forest ecosystem

D. Mogensen et al.

Title Page

Abstract

Introduction

Conclusions

References

Tables

Figures

⏪

⏩

◀

▶

Back

Close

Full Screen / Esc

Printer-friendly Version

Interactive Discussion



common (Haapanala et al., 2007; Rinne et al., 2009). As most of isoprene is not emitted at the site, but advected from near-by areas, it is difficult to describe this with a column model. Therefore it is not reasonable to force our model to fit the measured isoprene concentrations.

4.3 Vertical profile of the OH-reactivity

Diel average modelled OH-reactivity from ground to approximately 10 m above the canopy is visualized in Fig. 6. This includes data averaged from the 13th to end of 26 August 2008. Vertical profile of OH-reactivity for all summer months is presented in Fig. 7. In both figures, we observe a night time peak in the OH-reactivity. This peak is more pronounced below the canopy, but weakly observable also above. This is in contrast with the measured OH reactivity in which no discernible diurnal cycle can be seen (Sinha et al., 2010). Figure 8 presents daily averaged modelled and measured sum of monoterpene concentration for 4, 14, and 22 m for the 26 July to the 10 August 2008. This show a night time peak in monoterpene concentration corresponding to that in the OH-reactivity. These peaks are probably found near ground due to night deposition, and continuing emission while the vertical mixing is suppressed, especially near the ground. During day when the atmosphere is better mixed, the OH-reactivity decreases. The measured vertical profile of monoterpene concentration also support these observations (Fig. 8). As also seen from Fig. 8, only a marginal difference between measured and modelled concentrations for all three heights are observed verifying the emission scheme and chemistry included in our model. The reason for the lack of diurnal cycle in the observed OH-reactivity may lie in the contrasting diurnal cycles of isoprene and monoterpenes. While monoterpene concentrations at sites dominated by conifers tend to have their maximum at night due to the emission from storage pools, the maximum of isoprene concentration is usually observed in the afternoon (e.g. Rinne et al., 2005). The vegetation at the immediate vicinity of the measurement site is dominated by Scots pine emitting monoterpenes, but very little isoprene (e.g. Rinne et al., 2007, 2009). However, in the concentration footprint of the measurement site Norway spruce

Modelling atmos. OH-reactivity in boreal forest ecosystem

D. Mogensen et al.

Title Page

Abstract

Introduction

Conclusions

References

Tables

Figures



Back

Close

Full Screen / Esc

Printer-friendly Version

Interactive Discussion



dominated forests are as abundant as Scots pine dominated ones (Haapanala et al., 2007). Norway spruce is a significant isoprene source into the atmosphere, as are also some other trees, such as European aspen and willows, present within the concentration footprint area (Tarvainen et al., 2007; Rinne et al., 2009). As the emission scheme of the model describes Scots pine forest the modelled isoprene concentration is likely to be too low, thus not re-creating the observed diurnal cycle of the OH-reactivity. (e.g. see Fig. 4 in Sect. 4.1, where the difference in measured and modelled OH-reactivity in the afternoon could be assigned to this underestimation of isoprene concentration).

The OH-reactivity has also been modelled for higher altitudes, and as expected we find that the OH-reactivity decreases with height and is less than 1 s^{-1} at 3000 m.

In Fig. 9 daily average modelled OH-reactivity in the canopy, during winter, is presented. The turbulence and mixing are slower during winter, which results in accumulation of reactive compounds in the canopy that creates a peak in the OH-reactivity starting from noon, contrary to the summer time. Also here, the highest OH-reactivity is found near ground.

Daily averaged accumulated OH-reactivity for Period A is shown in Fig. 10. The OH-reactivity has been accumulated by summing over the OH-reactivity and height (h) products ($\sum R_{\text{OH},l} \cdot h_l$) for every layer (l) until the boundary layer. The accumulated OH-reactivity correlates with emission patterns of VOCs and peaks in the middle of the day. Even though the OH-reactivity peaks near ground during night, the total boundary layer OH-reactivity peaks during day.

4.4 What is the missing OH-reactivity

As has been proposed by other investigators and in the study by Sinha et al. (2010), a number of reactive unmeasured VOCs are likely to be responsible for the missing OH-reactivity. We suggest that these unmeasured VOCs are of biogenic origin, since the site is remote from anthropogenic sources.

Unfortunately, there are large uncertainties on rate constants in general, which is a particularly large problem during this study, since it is from these that the OH-reactivity

Modelling atmos. OH-reactivity in boreal forest ecosystem

D. Mogensen et al.

Title Page

Abstract

Introduction

Conclusions

References

Tables

Figures



Back

Close

Full Screen / Esc

Printer-friendly Version

Interactive Discussion



is calculated. Often when evaluators come to compare data for the same reaction studied by more than one group of investigators and involving different techniques, the rate coefficient often differ by a factor of 2 or even more (Atkinson et al., 1992). However, for many reactions between OH and VOCs, no experimental data exist, and the rate coefficients are only estimates, increasing the uncertainty even further. We have performed a simple sensitivity study, where the rate constants for reactions between OH and the 9 monoterpenes included in the model, isoprene, methane, acetaldehyde, acetone, formaldehyde, methanol and 2-methyl-3-buten-2-ol have been varied. By multiplying all these rate constants by a factor of 2, we were able to increase the modelled OH-reactivity by 40%. By multiplying the rate constants by a factor of 0.5, we lowered the OH-reactivity by 24%. The large uncertainties on the rate constants are therefore one possible explanation for the missing OH-reactivity. However, the real errors in the rate constants may well in practice have a cancelling effect.

4.5 Consequences for secondary aerosol formation

The still missing OH-reactivity affects our understanding of photochemical reactions and secondary product formation in the atmosphere. If unknown secondary products are assumed to account for unidentified missing sinks, they tend to suppress formation of secondary aerosols and enhance formation of ozone (Kiendler-Scharr et al., 2009). However, in case unidentified primary emitted organic compounds are assumed to account for the missing sinks, a variety of impacts may be observed, which could serve as precursors of secondary organics aerosols and significantly increase SOA formation (Chatani et al., 2009).

On the 23 August, the only new particle formation event during the measured period was observed. The missing OH-reactivity increased until the end of the event, and then decreased shortly after. On the 14 and 24 August less well defined events were observed; the 14th formation of < 10nm particles were seen, and the 24th two weak events were observed. A clear rise in the missing OH-reactivity on 14 August and during the first weak event the 24 August were equally observed. However, the

Modelling atmos. OH-reactivity in boreal forest ecosystem

D. Mogensen et al.

Title Page

Abstract

Introduction

Conclusions

References

Tables

Figures



Back

Close

Full Screen / Esc

Printer-friendly Version

Interactive Discussion



pattern was not repeated during the last event on the 24th. Due to the generally high fluctuation in the measured OH-reactivity and lack of new particle formation events, we are not able to make any clear conclusions. However, the observed rise in missing OH-reactivity during an event could be explained by more reaction between OH and some of these unknown organics. Since the rise is seen already in the early states of the particle events, it could be suggested that the OH oxidized compounds participate in the nucleation or condense on the newly formed clusters and help them grow. However, we saw no correlation between missing OH-reactivity and the condensation sink (correlation coefficient, R^2 , of 0.06), nor between measured OH-reactivity and condensation sink (correlation coefficient, R^2 , of 0.09). It therefore seems unlikely that OH loss to surface of particles will have any significant contribution to the missing OH-reactivity.

5 Conclusions

We have modelled the total OH-reactivity over a boreal forest. We found that we are currently able to simulate only ~30–50 % of the total measured OH sink term. The model simulations show that the relative contribution of inorganic and organic sinks vary significantly with season, with the organic compounds being the largest sink during summer, and inorganic compounds dominating during winter. Of the organic compounds, monoterpenes were found to be a major sink for the modelled OH-reactivity. We also showed that the OH-reactivity decreased with height and that a peak is found near ground during night correlating with monoterpene concentration. We suggest that the missing reactivity can be a combination of unmeasured biogenic species and uncertainties in the OH rate coefficients.

Acknowledgements. We thank Domenico Taraborrelli for helpful discussions and the Biogenic Hydrocarbon Fluxes group at the University of Helsinki for providing and measuring gas concentrations. Furthermore, the financial support by the Academy of Finland Centre of Excellence

Modelling atmos. OH-reactivity in boreal forest ecosystem

D. Mogensen et al.

Title Page

Abstract

Introduction

Conclusions

References

Tables

Figures



Back

Close

Full Screen / Esc

Printer-friendly Version

Interactive Discussion



program, the Danish Chemical Society, the Helsinki University Centre for Environment (HENVI), the Finnish Center of Excellence (FCoE), the European Research Council (ERC) and computational resources from CSC – IT Center for Science Ltd are all gratefully acknowledged.

References

- 5 Apel, E. C., Emmons, L. K., Karl, T., Flocke, F., Hills, A. J., Madronich, S., Lee-Taylor, J., Fried, A., Weibring, P., Walega, J., Richter, D., Tie, X., Mauldin, L., Campos, T., Weinheimer, A., Knapp, D., Sive, B., Kleinman, L., Springston, S., Zaveri, R., Ortega, J., Voss, P., Blake, D., Baker, A., Warneke, C., Welsh-Bon, D., de Gouw, J., Zheng, J., Zhang, R., Rudolph, J., Junkermann, W., and Riemer, D. D.: Chemical evolution of volatile organic compounds
10 in the outflow of the Mexico City Metropolitan area, *Atmos. Chem. Phys.*, 10, 2353–2375, doi:10.5194/acp-10-2353-2010, 2010. 9135
- Atkinson, R., Baulch, D. L., Cox, R. A., Hampson Jr., R. F., Kerr, J. A., and Troe, J.: Evaluated kinetic and photochemical data for atmospheric chemistry, Supplement IV, *J. Phys. Chem. Ref. Data*, 21, 1125–1568, 1992. 9138, 9146
- 15 Boy, M. and Kulmala, M.: The part of the solar spectrum with the highest influence on the formation of SOA in the continental boundary layer, *Atmos. Chem. Phys.*, 2, 375–386, doi:10.5194/acp-2-375-2002, 2002. 9138
- Boy, M., Rannik, U., Lehtinen, K., Tarvainen, V., Hakola, H., and Kulmala, M.: Nucleation events in the continental pbl long term statistical analysis of aerosol relevant characteristics,
20 *J. Geophys. Res.*, 108, 4667–4679, 2003. 9138
- Boy, M., Petäjä, T., Dal Maso, M., Rannik, Ü., Rinne, J., Aalto, P., Laaksonen, A., Vaattovaara, P., Joutsensaari, J., Hoffmann, T., Warnke, J., Apostolaki, M., Stephanou, E. G., Tsapakis, M., Kouvarakis, A., Pio, C., Carvalho, A., Römpp, A., Moortgat, G., Spirig, C., Guenther, A., Greenberg, J., Ciccioli, P., and Kulmala, M.: Overview of the field measurement campaign
25 in Hyytiälä, August 2001 in the framework of the EU project OSOA, *Atmos. Chem. Phys.*, 4, 657–678, doi:10.5194/acp-4-657-2004, 2004.
- Boy, M., Sogachev, A., Lauros, J., Zhou, L., Guenther, A., and Smolander, S.: SOSA a new model to simulate the concentrations of organic vapours and sulphuric acid inside the ABL - Part 1: Model description and initial evaluation, *Atmos. Chem. Phys.*, 11, 43–51,
30 doi:10.5194/acp-11-43-2011, 2011. 9134, 9136, 9137

Modelling atmos. OH-reactivity in boreal forest ecosystem

D. Mogensen et al.

Title Page

Abstract

Introduction

Conclusions

References

Tables

Figures

⏪

⏩

◀

▶

Back

Close

Full Screen / Esc

Printer-friendly Version

Interactive Discussion



**Modelling atmos.
OH-reactivity in
boreal forest
ecosystem**

D. Mogensen et al.

[Title Page](#)[Abstract](#)[Introduction](#)[Conclusions](#)[References](#)[Tables](#)[Figures](#)[⏪](#)[⏩](#)[◀](#)[▶](#)[Back](#)[Close](#)[Full Screen / Esc](#)[Printer-friendly Version](#)[Interactive Discussion](#)

- Chatani, S., Shimo, N., Matsunaga, S., Kajii, Y., Kato, S., Nakashima, Y., Miyazaki, K., Ishii, K., and Ueno, H.: Sensitivity analyses of OH missing sinks over Tokyo metropolitan area in the summer of 2007, *Atmos. Chem. Phys.*, 9, 8975–8986, doi:10.5194/acp-9-8975-2009, 2009. 9135, 9146
- 5 Damian, V., Sandu, A., Damian, M., Potra, F., and Carmichael, G. R.: The Kinetic PreProcessor KPP – A software environment for solving chemical kinetics, *Comput. Chem. Eng.*, 26, 1567–1579, 2002. 9137
- de Gouw, J. and Warneke, C.: Measurements of volatile organic compounds in the earths atmosphere using proton-transfer-reaction mass spectrometry, *Mass Spectrom. Rev.*, 26, 223–257, 2007. 9140
- 10 Di Carlo, P., Brune, W. H., Martinez, M., Harder, H., Leshner, R., Ren, X., Thornberry, T., Carroll, M. A., Young, V., Shepson, P. B., Riemer, D., Apel, E., and Campbell, C.: Missing OH Reactivity in a Forest: Evidence for Unknown Reactive Biogenic VOCs, *Science*, 304, 722–725, 2004. 9134, 9135
- 15 Faloola, I., Tan, D., Brune, W., Hurst, J., Barket Jr., D., Couch, T. L., Shepson, P., Apel, E., Riemer, D., Thornberry, T., Carroll, M. A., Sillman, S., Keeler, G. J., Sagady, J., Hooper, D., and Paterson, K.: Nighttime observations of anomalously high levels of hydroxyl radicals above a deciduous forest canopy, *J. Geophys. Res.*, 106, 24315–24333, 2001.
- Goldstein, A. H., and Galbally, I. E.: Known and Unexplored Organic Constituents in the Earth's Atmosphere, *Environ. Sci. Technol.*, 41, 1514–1521, 2007. 9143
- 20 Guenther, A., Karl, T., Harley, P., Wiedinmyer, C., Palmer, P. I., and Geron, C.: Estimates of global terrestrial isoprene emissions using MEGAN (Model of Emissions of Gases and Aerosols from Nature), *Atmos. Chem. Phys.*, 6, 3181–3210, doi:10.5194/acp-6-3181-2006, 2006. 9137
- 25 Haapanala, S., Rinne, J., Hakola, H., Hellén, H., Laakso, L., Lihavainen, H., Janson, R., O'Dowd, C., and Kulmala, M.: Boundary layer concentrations and landscape scale emissions of volatile organic compounds in early spring, *Atmos. Chem. Phys.*, 7, 1869–1878, doi:10.5194/acp-7-1869-2007, 2007. 9137, 9144, 9145
- Hakola, H., Tarvainen, V., Bäck, J., Ranta, H., Bonn, B., Rinne, J., and Kulmala, M.: Seasonal variation of mono- and sesquiterpene emission rates of Scots pine, *Biogeosciences*, 3, 93–101, doi:10.5194/bg-3-93-2006, 2006. 9137
- 30 Hari, P. and Kulmala, M.: Station for measuring ecosystem-atmosphere relations (SMEAR II), *Boreal Environ. Res.*, 10, 315–322, 2005. 9138

**Modelling atmos.
OH-reactivity in
boreal forest
ecosystem**

D. Mogensen et al.

[Title Page](#)[Abstract](#)[Introduction](#)[Conclusions](#)[References](#)[Tables](#)[Figures](#)[⏪](#)[⏩](#)[◀](#)[▶](#)[Back](#)[Close](#)[Full Screen / Esc](#)[Printer-friendly Version](#)[Interactive Discussion](#)

Hofzumahaus, A., Rohrer, F. Lu, K., Bohn, B., Brauers, T., Chang, C-C., Fuchs, H., Holland, F., Kita, K., Kondo, Y., Li, X., Lou, S., Shao, M., Zeng, L., Wahner, A., and Zhang, Y. Amplified Trace Gas Removal in the Troposphere, *Science*, 324, 1702–1704, 2009.

Holzinger, R., Lee, A., Paw, K. T., and Goldstein, U. A. H.: Observations of oxidation products above a forest imply biogenic emissions of very reactive compounds, *Atmos. Chem. Phys.*, 5, 67–75, doi:10.5194/acp-5-67-2005, 2005.

Kiendler-Scharr, A., Wildt, J., Dal Maso, M., Hohaus, T., Kleist, E., Mentel, T. F., Tillmann, R., Uerlings, R., Schurr, U., and Wahner, A.: New particle formation in forests inhibited by isoprene emissions, *Nature*, 461, 381–384, 2009. 9146

Kovacs, T. A. and Brune, W. H.: Total OH loss rate measurement, *J. Atmos. Chem.*, 39, 105–122, 2001.

Kovacs, T. A., Brune, W. H., Harder, H., Martinez, M., Simpas, J. B., Frost, G. J., Williams, E., Jobson, R., Stroud, C., Young, V., Fried, A., and Wert, B.: Direct measurements of urban OH reactivity during Nashville SOS in summer 1999, *J. Environ. Monit.*, 5, 68–74, 2003.

Kulmala, M., Haemerli, K. K., Aalto, P., Maekelae, J., Pirjola, L., Nilsson, E. D., Buzorius, G., Rannik, U., Dal Maso, M., Seidl, W., Hoffmann, T., Jansson, R., Hansson, H.-C., O'Dowd, C., and Viisanen, Y.: Overview of the international project on biogenic aerosol formation in the boreal forest (BIOFOR), *Tellus B*, 53, 324–343, 2001. 9136

Kurpius, M. R. and Goldstein, A. H.: Gas-phase chemistry dominates O₃ loss to a forest, implying a source of aerosols and hydroxyl radicals to the atmosphere, *Geophys. Res. Lett.*, 30, 1371–1374, 2003.

Lou, S., Holland, F., Rohrer, F., Lu, K., Bohn, B., Brauers, T., Chang, C.C., Fuchs, H., Häsel, R., Kita, K., Kondo, Y., Li, X., Shao, M., Zeng, L., Wahner, A., Zhang, Y., Wang, W., and Hofzumahaus, A.: Atmospheric OH reactivities in the Pearl River Delta - China in summer 2006: measurement and model results, *Atmos. Chem. Phys.*, 10, 11243–11260, doi:10.5194/acp-10-11243-2010, 2010. 9134, 9135

Mao, J., Ren, X., Brune, W. H., Olson, J. R., Crawford, J. H., Fried, A., Huey, L. G., Cohen, R. C., Heikes, B., Singh, H. B., Blake, D. R., Sachse, G. W., Diskin, G. S., Hall, S. R., and Shetter, R. E.: Airborne measurement of OH reactivity during INTEX-B, *Atmos. Chem. Phys.*, 9, 163–173, doi:10.5194/acp-9-163-2009, 2009. 9134

Maris, C., Chung, M. Y., Lueb, R., Krischke, U., Meller, R., Fox, M. J., and Paulson, S. E.: Development of instrumentation for simultaneous analysis of total non-methane organic carbon and volatile organic compounds in ambient air, *Atmos. Environ.*, 37, 149–158, 2003.

**Modelling atmos.
OH-reactivity in
boreal forest
ecosystem**

D. Mogensen et al.

[Title Page](#)[Abstract](#)[Introduction](#)[Conclusions](#)[References](#)[Tables](#)[Figures](#)[⏪](#)[⏩](#)[◀](#)[▶](#)[Back](#)[Close](#)[Full Screen / Esc](#)[Printer-friendly Version](#)[Interactive Discussion](#)

- Martinez, M., Harder, H., Kubistin, D., Rudolf, M., Bozem, H., Eerdeken, G., Fischer, H., Klüpfel, T., Gurk, C., Königstedt, R., Parchatka, U., Schiller, C. L., Stickler, A., Williams, J., and Lelieveld, J.: Hydroxyl radicals in the tropical troposphere over the Suriname rainforest: airborne measurements, *Atmos. Chem. Phys.*, 10, 3759–3773, doi:10.5194/acp-10-3759-2010, 2010.
- O’Dowd, C. D., Aalto, P., Hämeri, K., Kulmala, M., and Hoffmann, T.: Aerosol formation: Atmospheric particles from organic vapours, *Nature*, 416, 497–498, 2002.
- Ren, X. R., Harder, H., Martinez, M., Leshner, R. L., Oligier, A., Shirley, Y., Adams, J., Simpas, J. B., and Brune, W. H.: HOx concentrations and OH reactivity observations in New York City during PMTACS-NY2001, *Atmos. Environ.*, 37, 3627–3637, 2003. 9134
- Rinne, J., Ruuskanen, T. M., Reissell, A., Taipale, R., Hakola, H., and Kulmala, M.: On-line PTR-MS measurements of atmospheric concentrations of volatile organic compounds in a European boreal forest ecosystem, *Boreal Environ. Res.*, 10, 425–436, 2005. 9144
- Rinne, J., Taipale, R., Markkanen, T., Ruuskanen, T. M., Hellén, H., Kajos, M. K., Vesala, T., and Kulmala, M.: Hydrocarbon fluxes above a Scots pine forest canopy: measurements and modeling, *Atmos. Chem. Phys.*, 7, 3361–3372, doi:10.5194/acp-7-3361-2007, 2007. 9141, 9144
- Rinne, J., Bäck, J., and Hakola, H.: Biogenic volatile organic compound emissions from the Eurasian taiga: current knowledge and future directions, *Boreal Environ. Res.*, 14, 807–826, 2009. 9143, 9144, 9145
- Roberts, J. M., Bertman, S. B., Jobson, T., Niki, H., and Tanner, R.: Measurement of total nonmethane organic carbon (C_y): Development and application at Chebogue Point, Nova Scotia, during the 1993 North Atlantic Regional Experiment campaign, *J. Geophys. Res.-Atmos.*, 103, 13581–13597, 1998
- Sadanaga, Y., Yoshino, A., Watanabe, K., Yoshioka, A., Wakazono, Y., Kanaya, Y., and Kajii, Y.: Development of a measurement system of OH reactivity in the atmosphere by using a laser-induced pump and probe technique., *Rev. Sci. Instrum.*, 75, 2648–2655, 2004.
- Sadanaga, Y., Yoshino, A., Kato, S., and Kajii, Y.: Measurements of OH Reactivity and Photochemical Ozone Production in the Urban Atmosphere, *Environ. Sci. Technol.*, 39, 8847–8852, 2005.
- Sinha, V., Williams, J., Crowley, J. N., and Lelieveld, J.: The Comparative Reactivity Method - a new tool to measure total OH Reactivity in ambient air, *Atmos. Chem. Phys.*, 8, 2213–2227, doi:10.5194/acp-8-2213-2008, 2008. 9135, 9139

**Modelling atmos.
OH-reactivity in
boreal forest
ecosystem**

D. Mogensen et al.

[Title Page](#)
[Abstract](#)
[Introduction](#)
[Conclusions](#)
[References](#)
[Tables](#)
[Figures](#)




[Back](#)
[Close](#)
[Full Screen / Esc](#)
[Printer-friendly Version](#)
[Interactive Discussion](#)


- Sinha, V., Custer, T. G., Kluepfel, T., and Williams, J.: The effect of relative humidity on the detection of pyrrole by PTR-MS for OH reactivity measurements, *Int. J. Mass. Spectrom.*, 282, 108–111, 2009. 9139
- 5 Sinha, V., Williams, J., Lelieveld, J., Ruuskanen, T. M., Kajos, M. K., Patokoski, J., Hellen, H., Hakola, H., Mogensen, D., Boy, M., Rinne, J., and Kulmala, M.: OH Reactivity Measurements within a Boreal forest: Evidence for Unknown Reactive Emissions, *Env. Sci. Tech.*, 44, 6614–6620, 2010. 9135, 9136, 9138, 9139, 9141, 9142, 9144, 9145
- 10 Sogachev, A.: A note on two-equation closure modelling of canopy flow, *Bound.-Lay. Meteorol.*, 130, 423–435, 2009. 9136
- Sogachev, A. and Panferov, O.: Modification of two-equation models to account for plant drag, *Bound.-Lay. Meteorol.*, 121, 229–266, 2006. 9136
- Sogachev, A., Menzhulin, G., Heimann, M., and Lloyd, J.: A simple three dimensional canopy planetary boundary layer simulation model for scalar concentrations and fluxes, *Tellus B*, 54, 784–819, 2002. 9136
- 15 Sogachev, A., Panferov, O., Gravenhorst, G., and Vesala, T.: Numerical analysis of flux footprints for different landscapes, *Theor. Appl. Climatol.*, 80, 169–185, 2005. 9136
- Taipale, R., Ruuskanen, T. M., Rinne, J., Kajos, M. K., Hakola, H., Pohja, T., and Kulmala, M.: Technical Note: Quantitative long-term measurements of VOC concentrations by PTR-MS - measurement, calibration, and volume mixing ratio calculation methods, *Atmos. Chem. Phys.*, 8, 6681–6698, doi:10.5194/acp-8-6681-2008, 2008. 9139, 9140
- 20 Tarvainen, V., Hakola, H., Rinne, J., Hellen, H., and Haapanala, S.: Towards a comprehensive emission inventory of terpenoids from boreal ecosystems, *Tellus*, 59B, 526–534, 2007. 9145

Modelling atmos. OH-reactivity in boreal forest ecosystem

D. Mogensen et al.

Table 1. Modelled, measured and missing OH-reactivity for 13 to 27 August 2008.

	13–27 Aug (s ⁻¹)	13–18 Aug (s ⁻¹)	19–27 Aug (s ⁻¹)
Modelled OH-reactivity	2.5	2.3	2.6
Measured OH-reactivity	6.5	8.6	5.1
Missing OH-reactivity	4.0/61%	6.2/73%	2.5/49%

[Title Page](#)
[Abstract](#)
[Introduction](#)
[Conclusions](#)
[References](#)
[Tables](#)
[Figures](#)




[Back](#)
[Close](#)
[Full Screen / Esc](#)
[Printer-friendly Version](#)
[Interactive Discussion](#)

**Modelling atmos.
OH-reactivity in
boreal forest
ecosystem**

D. Mogensen et al.

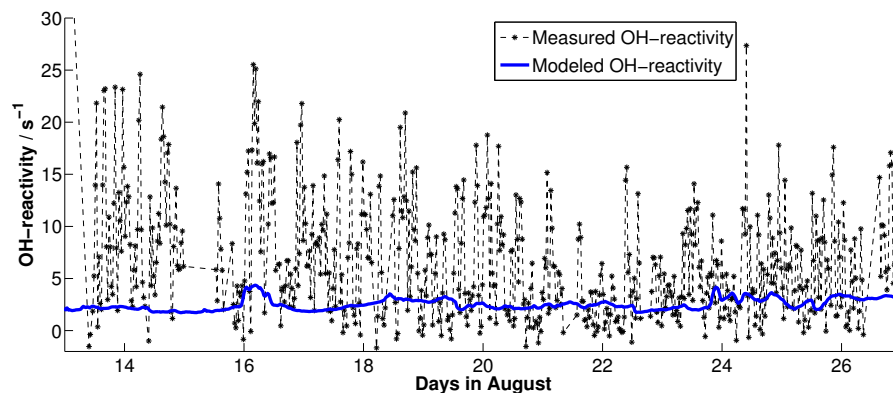


Fig. 1. Modelled (blue) and 30 min resolution measured OH-reactivity (black) from the 13 to 27 August 2008.

[Title Page](#)[Abstract](#)[Introduction](#)[Conclusions](#)[References](#)[Tables](#)[Figures](#)[◀](#)[▶](#)[◀](#)[▶](#)[Back](#)[Close](#)[Full Screen / Esc](#)[Printer-friendly Version](#)[Interactive Discussion](#)

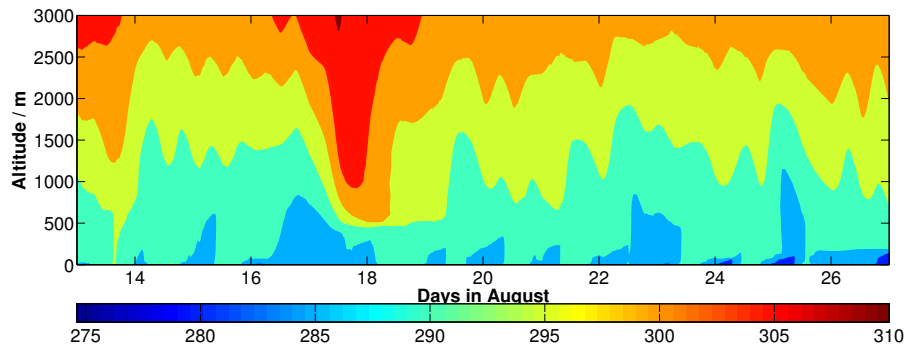


Fig. 2. Boundary layer heights expressed by potential temperature.

**Modelling atmos.
OH-reactivity in
boreal forest
ecosystem**

D. Mogensen et al.

Title Page

Abstract Introduction

Conclusions References

Tables Figures

⏪ ⏩

◀ ▶

Back Close

Full Screen / Esc

Printer-friendly Version

Interactive Discussion



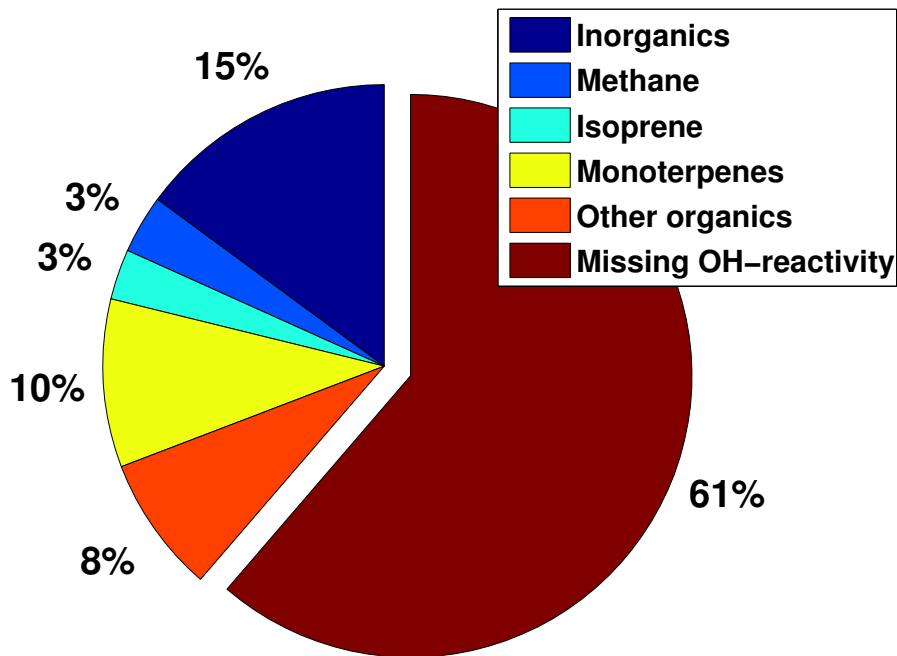


Fig. 3. Calculated contributions to the OH-reactivity from the 13 to 27 August 2008.

**Modelling atmos.
OH-reactivity in
boreal forest
ecosystem**

D. Mogensen et al.

[Title Page](#)

[Abstract](#) [Introduction](#)

[Conclusions](#) [References](#)

[Tables](#) [Figures](#)

[⏪](#) [⏩](#)

[◀](#) [▶](#)

[Back](#) [Close](#)

[Full Screen / Esc](#)

[Printer-friendly Version](#)

[Interactive Discussion](#)



**Modelling atmos.
OH-reactivity in
boreal forest
ecosystem**

D. Mogensen et al.

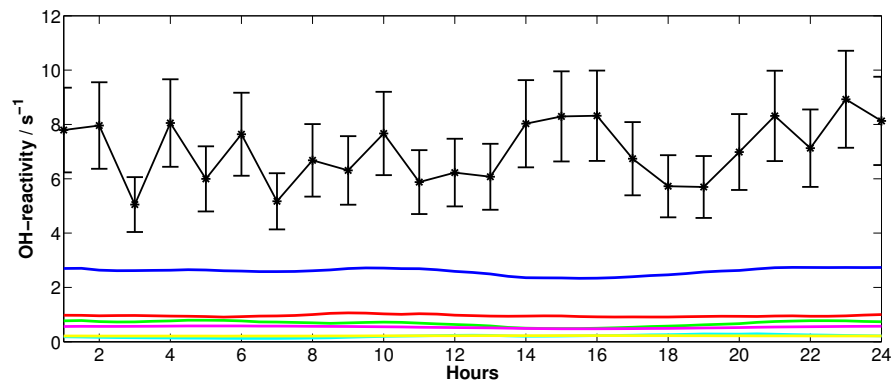


Fig. 4. Measured (black) and modelled (dark blue) OH-reactivity including contributions from inorganic compounds (red), isoprene (light blue), monoterpenes (green), methane (yellow) and other organic compounds (pink).

[Title Page](#)[Abstract](#)[Introduction](#)[Conclusions](#)[References](#)[Tables](#)[Figures](#)[⏪](#)[⏩](#)[◀](#)[▶](#)[Back](#)[Close](#)[Full Screen / Esc](#)[Printer-friendly Version](#)[Interactive Discussion](#)

**Modelling atmos.
OH-reactivity in
boreal forest
ecosystem**

D. Mogensen et al.

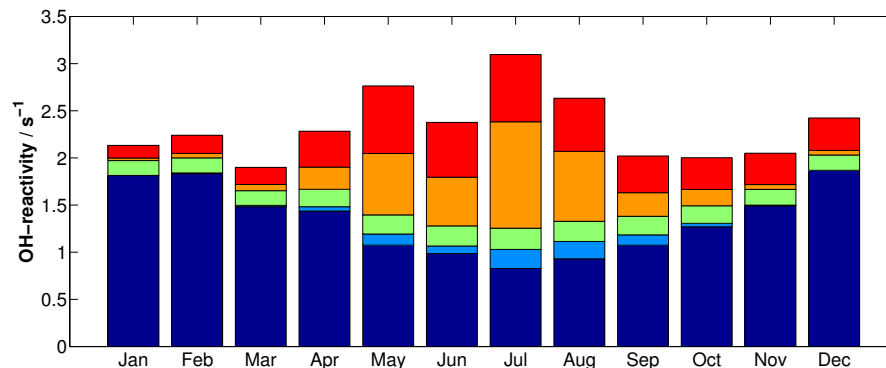


Fig. 5. Modelled OH-reactivity for year 2008 including contributions from inorganic compounds (dark blue), isoprene (light blue), methane (lime), monoterpenes (orange) and other VOCs (red).

[Title Page](#)[Abstract](#)[Introduction](#)[Conclusions](#)[References](#)[Tables](#)[Figures](#)[⏪](#)[⏩](#)[◀](#)[▶](#)[Back](#)[Close](#)[Full Screen / Esc](#)[Printer-friendly Version](#)[Interactive Discussion](#)

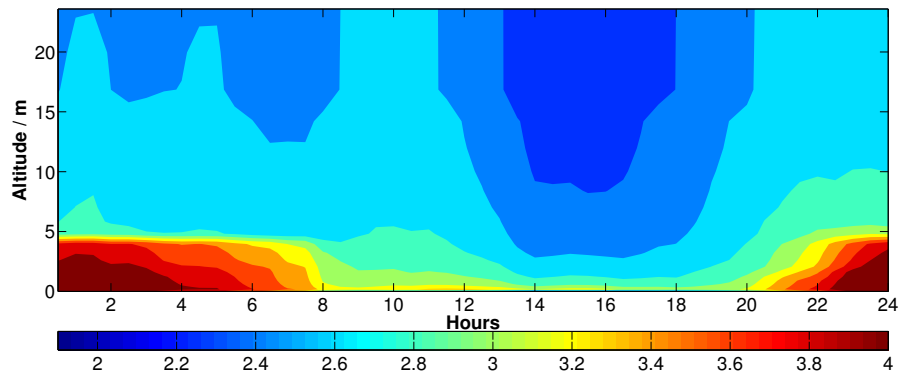


Fig. 6. Daily averaged modelled OH-reactivity from 13 to 27 August as a function of altitude.

**Modelling atmos.
OH-reactivity in
boreal forest
ecosystem**

D. Mogensen et al.

Title Page

Abstract Introduction

Conclusions References

Tables Figures

⏪ ⏩

◀ ▶

Back Close

Full Screen / Esc

Printer-friendly Version

Interactive Discussion



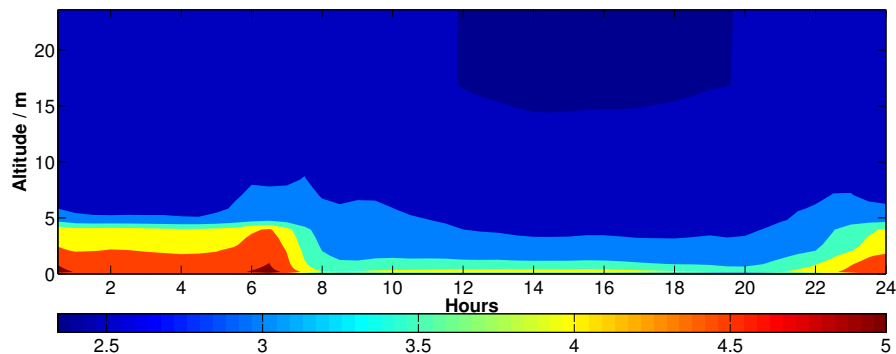


Fig. 7. Daily averaged modelled OH-reactivity as a function of altitude for May, June, July, and August 2008.

**Modelling atmos.
OH-reactivity in
boreal forest
ecosystem**

D. Mogensen et al.

Title Page

Abstract Introduction

Conclusions References

Tables Figures

⏪ ⏩

◀ ▶

Back Close

Full Screen / Esc

Printer-friendly Version

Interactive Discussion



**Modelling atmos.
OH-reactivity in
boreal forest
ecosystem**

D. Mogensen et al.

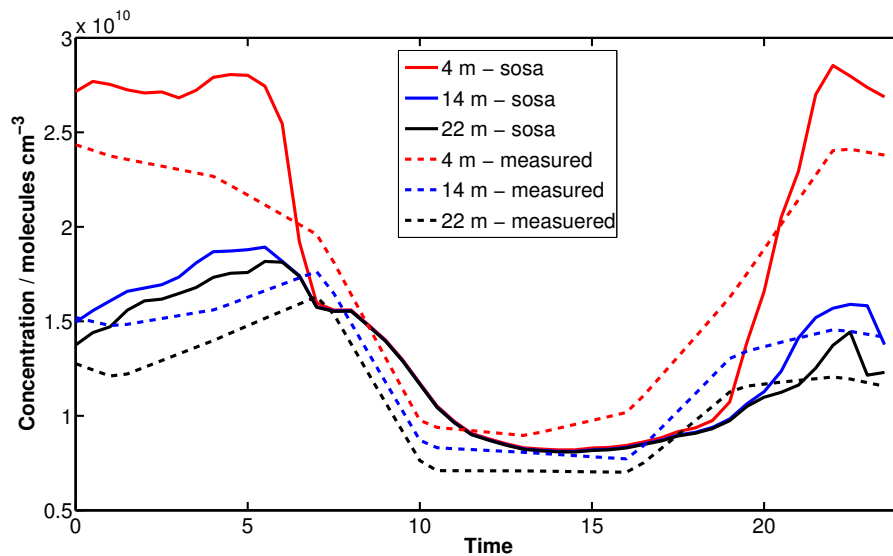


Fig. 8. Daily averaged modelled and measured sum of monoterpene concentration for 4, 14, and 22 m. The averaging has been done for 26 July to 10 August 2008.

[Title Page](#)[Abstract](#)[Introduction](#)[Conclusions](#)[References](#)[Tables](#)[Figures](#)[⏪](#)[⏩](#)[◀](#)[▶](#)[Back](#)[Close](#)[Full Screen / Esc](#)[Printer-friendly Version](#)[Interactive Discussion](#)

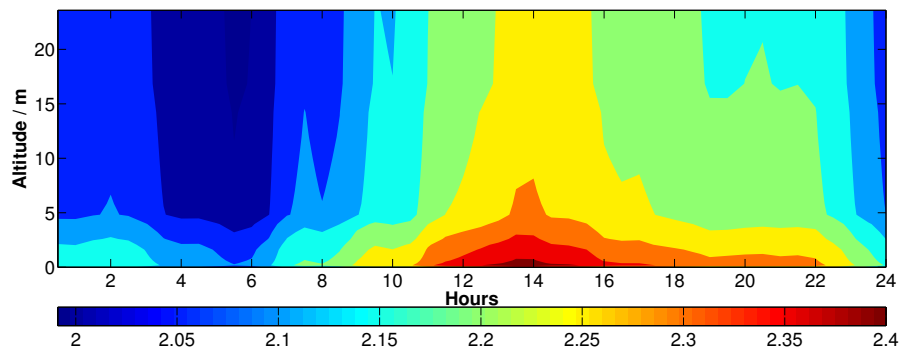


Fig. 9. Daily averaged modelled OH-reactivity as a function of altitude for November, December, January, February, and March 2008.

**Modelling atmos.
OH-reactivity in
boreal forest
ecosystem**

D. Mogensen et al.

Title Page

Abstract Introduction

Conclusions References

Tables Figures

⏪ ⏩

◀ ▶

Back Close

Full Screen / Esc

Printer-friendly Version

Interactive Discussion



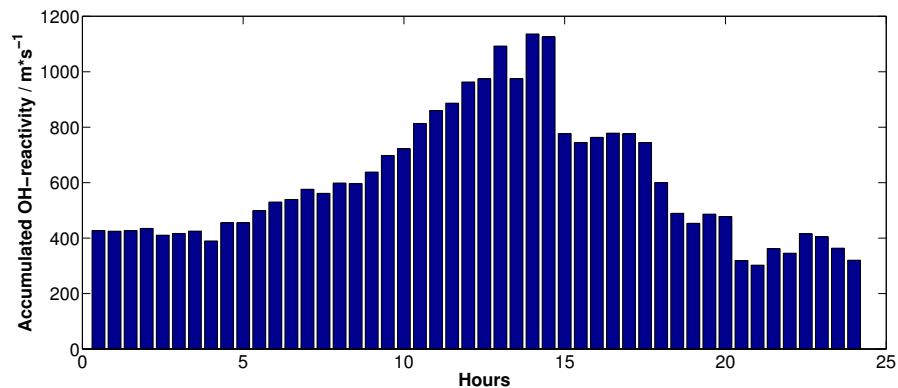


Fig. 10. Daily averaged accumulated OH-reactivity until the height of the boundary layer for the 13 to 27 August 2008.

**Modelling atmos.
OH-reactivity in
boreal forest
ecosystem**

D. Mogensen et al.

Title Page	
Abstract	Introduction
Conclusions	References
Tables	Figures
◀	▶
◀	▶
Back	Close
Full Screen / Esc	
Printer-friendly Version	
Interactive Discussion	

