

# A lack of native congeners may limit colonization of introduced conifers by indigenous insects in Europe<sup>1</sup>

Alain Roques, Marie-Anne Auger-Rozenberg, and Solen Boivin

**Abstract:** We compared the recruitment of phytophagous arthropod pests onto exotic conifers introduced in Europe without any congeners with that of exotic conifers that have native congeners. In 130 years of extensive plantation forestry in Europe, Douglas-fir (*Pseudotsuga menziesii* (Mirb.) Franco) recruited only 87 arthropod species, i.e., only 33.9% of the number of associated arthropod species in its native range (257 spp.). Exotic species of Cupressaceae without indigenous congeners also recruited only a portion (3.4% to 57.9%) of the arthropod fauna observed in their native range. In both cases, the majority of the recruited species were polyphagous, i.e., that they can feed on plants of different families of conifers and (or) angiosperms. In contrast, exotic conifers with native congeners recruited most of the insects colonizing the native congeneric conifers. Differences in arthropod recruitment were observed according to both guild and feeding habit, with the externally feeding herbivores being dominant. Typically, the damage caused by native insects that had been recruited by exotic conifers without congeners was limited, whereas the damage caused by native insects that had been recruited by exotic conifers with congeners often led to severe outbreaks at the time the shift between hosts occurred. However, when a highly specialized exotic insect was introduced along with the host, the invasive insect tended to occupy the entire niche, causing more damage than in the original range, in the absence of natural enemies and indigenous competitors.

**Résumé :** Le recrutement d'arthropodes phytophages par des conifères exotiques introduits en Europe sans congénères autochtones a été comparé à celui de conifères exotiques présentant des congénères natifs. En 130 ans de plantations importantes en Europe, le sapin de Douglas (*Pseudotsuga menziesii* (Mirb.) Franco) n'a recruté que 87 espèces d'arthropodes, soit seulement 33,9 % du total des 257 espèces qui y sont associées dans la zone d'origine. Les espèces exotiques de Cupressacées sans congénères natifs n'ont recruté que de 3,4 à 57,9 % autant d'espèces que dans leur zone native. Dans tous ces cas, la plupart des insectes sont polyphages et capables de se nourrir sur différentes familles de conifères et (ou) d'angiospermes. A l'opposé, la plupart des insectes colonisant les conifères présentant des congénères proviennent de ces congénères. On a aussi observé des différences de recrutement selon la guild et les types alimentaires, avec une dominance des herbivores se nourrissant de manière externe sur le feuillage. Les insectes recrutés ne produisent que rarement des dégâts, voire des pullulations, sur les conifères sans congénères natifs. En revanche, l'introduction d'insectes exotiques hautement spécialisés (comme le chalcidien des graines de Douglas) se traduit par une occupation maximale de la niche considérée, en l'absence d'ennemis naturels comme de compétiteurs indigènes.

[Traduit par la Rédaction]

## Introduction

During the 20th century, exotic conifers have increasingly been planted all over the world to meet the demand for wood products as well as for ornamental purposes (Zobel et al. 1987). In Western and Northern Europe, several exotic species of Pinaceae, namely Douglas-fir (*Pseudotsuga menziesii* (Mirb.) Franco), lodgepole pine (*Pinus contorta* Dougl. ex Loud. var. *latifolia* Engelm.), Monterey pine (*Pinus radiata*

*D. Don.*), and Sitka spruce (*Picea sitchensis* (Bong.) Carrière), presently constitute important portions of the forested ecosystems. For instance, Douglas-fir was first introduced from western North America to Europe in 1827 and has been extensively planted since the 1860s–1870s, with a noticeable acceleration following World War II (De Champs 1997). Today, there are about 650 000 ha of Douglas-fir planted in Europe; 357 000 ha are located in France, where the species represents 7.1% of the total area covered by conifers (AFOCEL 2004). Similarly, most European hedgerows are increasingly dominated by exotic conifers of the family Cupressaceae such as *Chamaecyparis lawsoniana* (A. Murray) Parl., *Cryptomeria japonica* (L. f.) D. Don, *Thuja plicata* Donn ex D. Don, and *Cupressus sempervirens* L. The latter species, also known as the evergreen cypress, was introduced two millenniums ago by the Ancient Greeks and the Romans (Baumann 1982).

The increase in the surface planted with exotic conifers has resulted in native insects being more regularly exposed to such species. From a scientific perspective, tree introduc-

Received 24 February 2005. Accepted 21 November 2005.  
Published on the NRC Research Press Web site at  
<http://cjfr.nrc.ca> on 10 February 2006.

A. Roques,<sup>2</sup> M.-A. Auger-Rozenberg, and S. Boivin.  
Institut national de la recherche agronomique, Zoologie  
forestière, Ardon, BP20619, 45166 Olivet, France.

<sup>1</sup>This article is one of a selection of papers published in the  
Special Issue on The Ecology of Forest Insect Invasions and  
Advances in Their Management.

<sup>2</sup>Corresponding author (e-mail: [Alain.Roques@orleans.inra.fr](mailto:Alain.Roques@orleans.inra.fr)).

tions can be viewed as large-scale manipulative experiments that test the response of insects to novel hosts. In such experiments, controls are represented either by the tree's herbivore assemblage from its native range (Strong et al. 1977) or by the assemblages on native plants coexisting with the exotic tree in the area of introduction (Strong 1974a; Leather 1986). Such experiments also provide a rare opportunity to study phytophagous communities as they are being assembled from the local pool of insect species with no history of contact with their new hosts, and to determine the relative importance of ecological and evolutionary processes in shaping herbivorous assemblages (Novotny et al. 2003).

The literature contains contradictory results on the relative susceptibility of exotic and native tree species to phytophagous insects (DeGomez and Wagner 2001). Based on the observation of a few outbreaks (e.g., Drooz and Bustillo 1972), the rate of insect recruitment by exotic trees has probably been overemphasized because of experiences with cosmopolitan cultivated crops such as cocoa, tea, coffee, rice, sugarcane, maize, and soya bean (Tahvanainen and Niemelä 1987). These plants show low chemical defences following their cultivation as monoculture crops under high fertilization regimes, and they rapidly accumulated herbivores from the native faunas, mostly polyphagous externally feeding insects, without a need of evolutionary adaptation (Strong et al. 1984; Janzen 1986). According to Strong et al. (1984), such colonization is typically asymptotic, and recruitment of insect populations stabilizes within ca. 300 years of the introduction of the host. Similarly, Evans (1987) found that Sitka spruce introduced in Great Britain has recruited more species of acquired phytophagous insects than in its native North American range. Conversely, very slow insect recruitment has been observed for some tree species transferred from one continent to another, such as oaks from Europe to South Africa (Moran and Southwood 1982) and *Eucalyptus* spp. from Australia to Africa and America (Strong et al. 1984). Tahvanainen and Niemelä (1987) pointed out that strongly defended or chemically isolated newly introduced plants probably require special adaptations before local insects are able to utilize them, and therefore they can be colonized only through evolutionary processes, leading to a very slow recruitment. In such cases, the equilibrium could be achieved only over a geological time scale (Southwood 1960). However, both processes — rapid initial colonization, which is mainly governed by ecological factors, and slow evolutionary recruitment — could be superimposed based on the level of the plant's resistance and the colonization ability of the local insect species (Tahvanainen and Niemelä 1987).

The taxonomic isolation or relatedness of the introduced trees from the local flora has been suspected to explain, at least partly, the variation in the rate of insect recruitment among tree species (Lawton and Schröder 1977; Connor et al. 1980; Neuvonen and Niemelä 1981). Few insects specialize on just a single plant species, and even the more specialized monophagous feeders tend to be able to feed on congeneric species (Niemelä and Mattson 1996). The degree of taxonomic isolation of the exotic species is, however, difficult to determine. Among the various approaches detailed by Kennedy and Southwood (1984), the most convenient one seemed to consist of ranking tree species as subgeneric, congeneric, confamilial, or only non-confamilial, in the area of introduc-

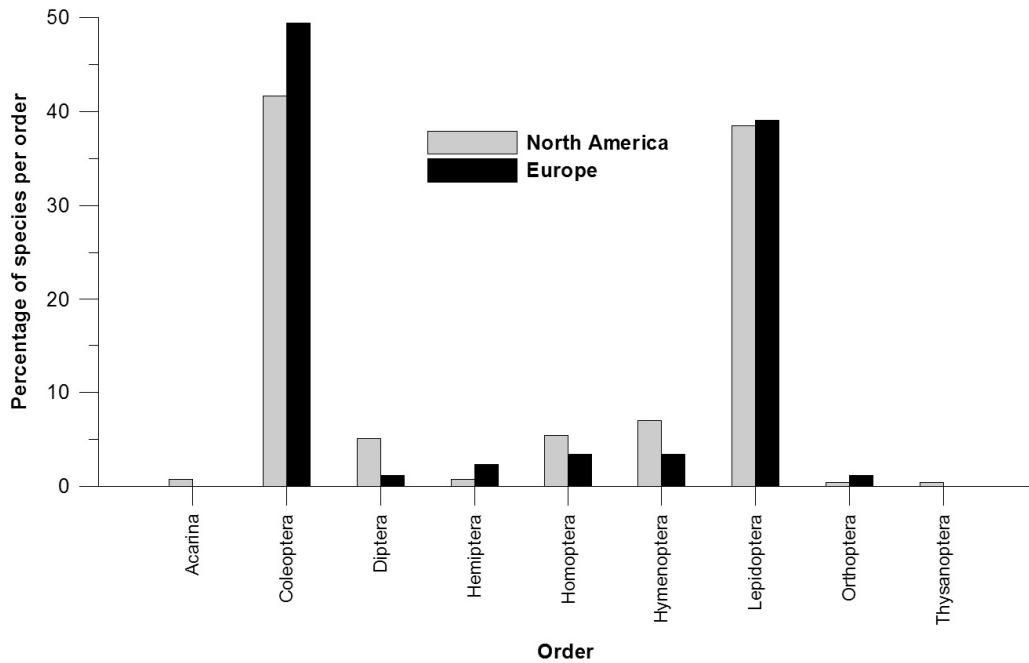
tion (Connor et al. 1980). After the Quaternary glacial periods Europe was left with a limited number of conifer species and genera. Genera such as *Chamaecyparis*, *Thuja*, and *Pseudotsuga*, which were formerly present in Europe, went extinct during late Tertiary period and Pleistocene (Sauer 1988; Czaja 2000). As a result, many monophagous and oligophagous European insect species undoubtedly went extinct along with these host plants (Niemelä and Mattson 1996). This context provides an opportunity to assess the importance of taxonomic isolation on recruitment rate by comparing phytophage colonization among introduced conifers with and without native congeneric taxa, and comparing conifer families. However, only a few synthetic studies are available, essentially dealing with species having native congeners in Europe in the genera *Pinus* (*Pinus contorta*, Lindelöw and Björkman 2001) and *Picea* (*Picea sitchensis*, Evans 1987). In spite of its use in large plantations, Douglas-fir has been little studied for its entomofauna, and most of the available information is scattered in "grey" literature. The situation is no better for the other conifer species without native European congeners (*Chamaecyparis*, *Cryptomeria*, and *Thuja* in the family Cupressaceae; *Cedrus* and *Tsuga* in the family Pinaceae).

In this paper, current knowledge on the arthropod species associated with Douglas-fir and several Cupressaceae introduced into Europe is summarized and used to compare the community structure in Europe with that in the native range of each tree species. Also, this information was used to compare the colonization processes of exotic conifer species without congeneric species in the area of introduction (i.e., Douglas-fir, *Chamaecyparis lawsoniana*, *Cryptomeria japonica*, and *Thuja plicata*) with that observed on an exotic conifer species with native congeners in the area of introduction, lodgepole pine.

## Material and methods

Data on the arthropod fauna of Douglas-fir in Europe were extracted from published reports (e.g., France: Legrand 1990, 1997, 2004; Italy: Roversi et al. 1993; Poland: Dominik 1972, 1979; Borowski 1997), from records dealing with specific guilds (foliage: Hatcher and Winter 1990; cones and seeds: Roques 1981, 1983; Křístek et al. 1992; Skrzypczyńska 1996), from observations in arboreta (Čermák 1952; Hrubík 1973), and from various unpublished reports by foresters, especially those following the 1999 windstorm that hit forests of Western Europe. A colonized host is defined by Fraser and Lawton (1994) as one with two or more records of an arthropod species that is normally associated with other plants and is found feeding (as an adult) and (or) completing larval development under field conditions. The entomofauna of Douglas-fir in North America was compiled from Furniss and Carolin (1992) and Wood et al. (2003) for the western United States, from Holsten et al. (1985) for Alaska, and from the list of conifer defoliating insects of British Columbia (<http://www.pfc.forestry.ca/entomology/defoliators/>). We also examined more specific publications for cone and seed insects (Keen 1958; Hedlin 1974; Hedlin et al. 1980; Yates 1986) and bark beetles (Bright 1976). We finally developed a bibliographical analysis for both geographic areas using CAB abstracts 1972–2004 as a primary source to find addi-

**Fig. 1.** Comparison of the percentage of species in the arthropod orders that have colonized Douglas-fir in Europe and in its natural North American range.



tional species records that were not mentioned in the studies cited above or discovered after their publication.

To compare the degree of host specialisation for the insects colonizing Douglas-fir in its native range with that of the insects recruited in the area of introduction, several parameters were established. Each insect species was assigned to one of the following categories (Lindelöw and Björkman 2001): (i) monophagous (i.e., feeding apparently restricted to plants from a single genus); (ii) oligophagous (i.e., feeding on plants from several genera of the same family); and (iii) polyphagous (i.e., feeding on plants from more than one family). Furthermore, species feeding only on conifers were distinguished from those feeding on both conifers and angiosperms. Whenever possible, we tried to identify the original host tree species from which an insect species shifted to the exotic tree, but in most cases literature data only allowed us to determine the main host (i.e., the host onto which insect records are the more frequent). The type of tree tissue fed upon by immature stages was also used to further define the level of host specialization. Insects were first assigned to one of the following two categories: (i) herbivores, which feed on foliage and reproductive structures, and xylophages, which feed in phloem and xylem of living, dying, or dead trees, and include root feeders; and (ii) external chewers, sap feeders, leaf miners, gall formers, bud and shoot borers, or pollen and seed-cone feeders.

The list of insects recruited by *Cryptomeria japonica*, the North American species of *Chamaecyparis*, and *Thuja plicata* (= *Thuja orientalis* L.) introduced in Europe was established from Hrubik (1973), Schwenke (1982), Roques (1983), Hatcher and Winter (1990), and various other sources (e.g., Golan 2003; Golan and Jaskiewicz 2002; Gomboc 2003; Rouault 2002). The entomofauna present in the native areas of these tree species could be ascertained for only three guilds (external chewers, cone and seed insects, and xylo-

phages). They were extracted from Kobayashi (1976, 1981), Li and Li (1997), and Liu (1987) for *Cryptomeria japonica* in eastern Asia, while the data for *Chamaecyparis lawsoniana*, *Chamaecyparis nootkatensis* (D. Don) Spach, and *Thuja plicata* in North America were compiled from Keen (1958), Hedlin et al. (1980), Holsten et al. (1985), Yates (1986), Furniss and Carolin (1992), Duncan (1996), and the list of conifer defoliating insects of British Columbia (cf. above).

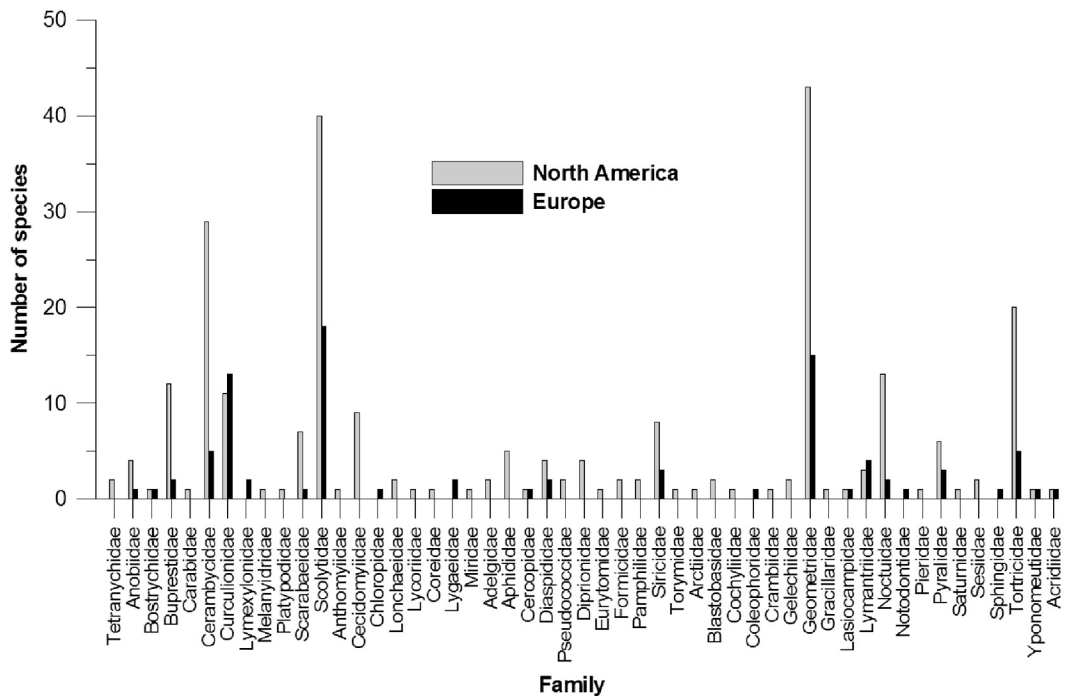
Faunal records were compared between native and introduced ranges of the tree species using contingency tables and log likelihood ratio  $G$  test (Sokal and Rohlf 1995).

## Results

### Patterns of colonization of Douglas-fir in Europe

A total of 87 indigenous species have been recruited by Douglas-fir in Europe (Appendix A, Table A1). This value represents only 33.9% of the overall species richness observed in the native North American range of Douglas-fir, where a total of 257 arthropod species (255 insects and two mites) belonging to nine orders and 45 families have been recorded. In addition, we observed six species that were introduced from North America together with the host tree and one species of Asian origin (*Xylosandrus germanus* (Blandford)). The species recruited in Europe belonged to seven orders (Fig. 1) and 24 families of insects (Fig. 2). Coleoptera predominated (43 species, i.e., 49.4%) with Lepidoptera second (34 species, i.e., 39.1%), followed by, in decreasing importance, a few Hymenoptera, Homoptera, Hemiptera, Diptera, and Orthoptera. Native European mites as well as thrips (Thysanoptera) have not yet colonized Douglas-fir, but the relative proportion of species in each insect order did not differ significantly between North America and Europe (Fig. 1;  $G = 8.22$ ,  $df = 7$ ,  $P = 0.223$ ). Similarly, the relative proportion of insect species in each family did not differ globally

**Fig. 2.** Comparison of the number of species per arthropod family that have colonized Douglas-fir in Europe and in its natural North American range.



between the native and introduced ranges of Douglas-fir (Fig. 2;  $G = 112.65$ ,  $df = 51$ ,  $P = 0.083$ ). However, recruitment has not yet occurred in Europe in some families that are well represented in the native range, e.g., Diprionidae (Hymenoptera) and Aphididae (Homoptera), whereas recruitments were observed in six insect families not recorded in the native range (Notodontidae, Coleophoridae, Sphingidae, Lymexyloidae, Chloropidae, Lygaeidae). The proportion of Lepidopteran species was quite similar between Europe and North America (39.1% vs. 38.5%) but there was a proportionally larger recruitment of Coleoptera in Europe (49.4% vs. 41.6%). This difference was mainly due to a higher number of phyllophagous weevils in Europe than in the native range (13 species, 14.9% of the total richness vs. 11 species, 4.3% of the total richness).

The degree of host specialization among the recruited insects is shown in Fig. 3. Polyphagous species (originally feeding on different conifer families and (or) on angiosperms) were dominant, representing 42.5% of the total species recruited. Oligophagous species (feeding on different genera of Pinaceae) and monophagous species accounted for 27.6% and 29.9% of the shifts, respectively (Fig. 3a). Most of the monophagous insects colonizing Douglas-fir in Europe came from *Abies alba* Mill. and *Pinus* spp. rather than from *Picea abies* (L.) Karst. and *Larix decidua* Mill. A few species were recruited from junipers. However, when only the main host of the recruited insects was considered, most recruited species came from *Picea* rather than from the other genera of Pinaceae (Fig. 3b).

Despite the absence of native gall maker in Europe, the guild structure of Douglas-fir did not differ significantly between the original and introduced ranges (Fig. 4;  $G = 5.003$ ,  $df = 6$ ,  $P = 0.416$ ). It consisted predominantly of xylophages and external chewers in both areas. Another striking pattern was that the colonizing external chewers were predominantly

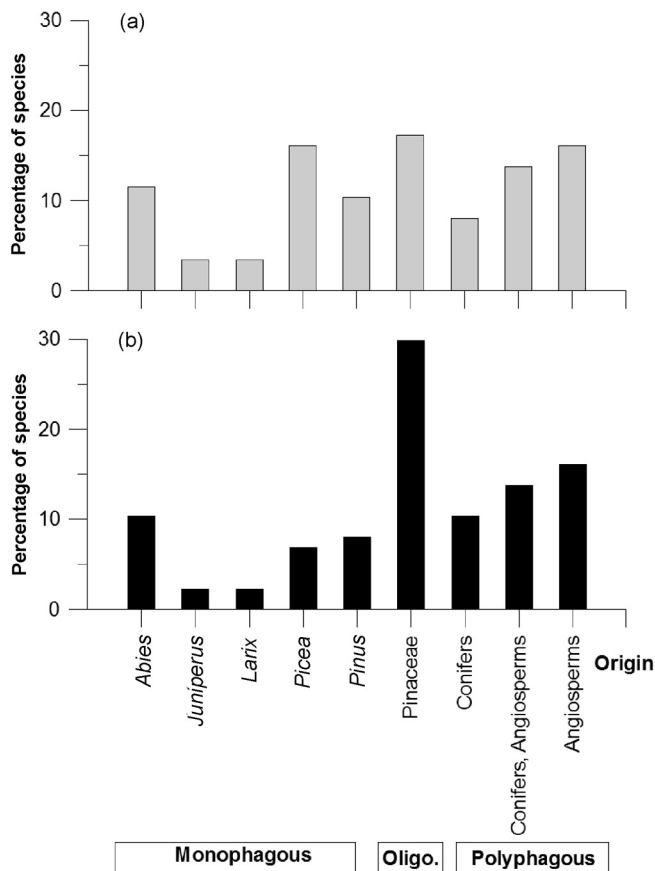
generalists, whereas the xylophagous colonizers mostly consisted of monophagous species, essentially originating from *Abies alba*, and oligophagous species related to Pinaceae (Table 1). Cones and buds have not been colonized by specialists. Most of the phyllophagous weevils cited above as contributing to a higher proportion of Coleoptera on Douglas-fir in Europe were highly polyphagous species. When the feeding habits of the recruited insects were examined, one could see a preponderance of externally feeding herbivores (i.e., feeding on the exterior of plants), such as chewers and sap feeders, over endophagous herbivores (i.e., feeding within plant tissues), such as bud and cone feeders and gall makers. Thus, the externally feeding herbivores were 5.9 times as numerous as the endophages in Europe (41:7; Fig. 4), whereas they were only 2.5 times as numerous in North America (i.e., 107:42).

The recruited insects feeding behaviour on the exotic hosts was usually the same as that on the original host (Appendix A, Table A1). A noticeable exception was a pine cone pyralid, *Dioryctria simplicella* Hein. (= *Dioryctria mutata* Fuchs), whose larvae originally feed on cones and shoots of Scots pine (*Pinus sylvestris* L.). On Douglas-fir, however, *D. simplicella* larvae girdled branches and trunks and fed on seed cones (Vouland et al. 1990; Roques 1983).

Native species shifting onto Douglas-fir rarely caused outbreaks. A few records concerned polyphagous Lepidopteran defoliators. A lymantrid, *Orgyia antiqua* L., caused large defoliation in Poland (Burzyński 1978). Elsewhere than in Europe, Kay (1983) also recorded several outbreaks of a geometrid native to New Zealand, *Pseudocoremia suavis* Butler. Damage by a notodontid pine specialist, the winter pine processionary moth, *Thaumetopoea pityocampa* (Denis & Schiff.), also increased in southern Europe, as the moth has become more frequently encountered in Douglas-fir stands along its latitudinal and altitudinal range extension with global



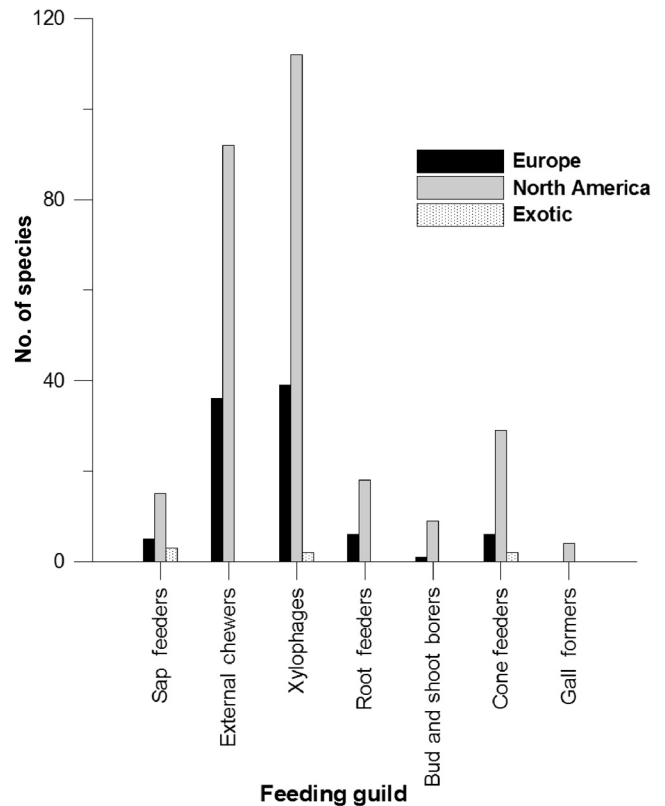
**Fig. 3.** Degree of host specialization of the arthropod species that have colonized Douglas-fir in Europe. (a) Percentage of species calculated with regard to the main host of the arthropod (see text). (b) Percentage of species calculated with regard to the host range exhibited by the arthropod.



warming (Battisti et al. 2005). None of the 18 native scolytids developing in trunks and logs of Douglas-fir (Fig. 2) have caused severe damage yet. Even following the 1999 windstorm, which felled large areas planted with Douglas-fir in Western Europe, the percentage of trees attacked by bark beetles remained significantly lower in Douglas-fir than in native Pinaceae species. A survey conducted during 2000–2001 in France revealed that only 2.6% of the Douglas-fir trees surveyed had been attacked by autumn 2000 and only 6% had been attacked by autumn 2001, while the attack rate reached 36% and 72% for *Picea abies* (Nageleisen 2002).

In contrast, an invasive chalcid specialist of Douglas-fir seeds, *Megastigmus spermotrophus* Wachtl (Hymenoptera: Torymidae), destroyed most (up to 100%) of the annual seed crop in the majority of European plantations, especially in the seed orchards (Roques 1981; Rappaport and Roques 1991; Jarry et al. 1997), whereas less than 20% of the seeds were generally infested in the native American range (Rappaport and Volney 1989; Schowalter and Haverty 1989). *Megastigmus spermotrophus* was probably introduced during the last part of the 19th century, along with its host, to Europe and New Zealand (Roques and Skrzypczyńska 2003). In the newly colonized areas, only a few insects shifted to cones, mostly polyphagous and oligophagous species that caused very limited damage to cones and seeds (Roques 1983). In the near

**Fig. 4.** Comparison of the guild structure of the entomofauna exploiting Douglas-fir in the natural range (North America) and in the introduced range (Europe) (a species may belong to several feeding guilds). Exotic insect species introduced to Europe are also shown.



absence of competitors and natural enemies, the invasive chalcid tended to occupy the entire seed niche. The same process was observed in New Zealand (Bain 1977). In contrast, the presence of a large number of competing cone insects in the native range probably explains the limited seed infestation by *M. spermotrophus* because the chalcid is the last species to oviposit into cones (Fig. 5; Roques et al. 2003). However, the recent introduction in Italy and Slovenia of another exotic cone feeder, the western conifer-seed bug, *Leptoglossus occidentalis* Heid. (Hemiptera: Coreidae), may further limit the preeminence of *M. spermotrophus* in Europe (Bernardinelli and Zandigiacomo 2002; Gogala 2003).

A similar situation was observed for the Cooley spruce gall aphid, *Gilletteella cooleyi* (Gill.), which induced severe defoliation on Douglas-fir in several European countries after having been introduced from North America in the early 1900s (Goix 1982; Parry and Spires 1982; Stephan 1987; Legrand 1990; Roversi and Nocentini 1996). The presence of a larger number of competing native defoliators and the need for a primary host to complete its cycle, namely a spruce species, may, however, have prevented the aphid's damage from reaching levels similar to those observed with the seed chalcid.

**Patterns of colonization of exotic Cupressaceae in Europe**

Insect recruitment largely differed among exotic species of Cupressaceae introduced into Europe (Table 2; Appendix A,

**Table 1.** Number of arthropod species per feeding guild that have colonized Douglas-fir in Europe according to original host (a species may belong to several feeding guilds, e.g., external chewer as adult and root feeder as larva for several weevils).

| Origin                   | Sap feeders | External chewers | Xylophages | Root feeders | Bud and shoot borers | Cone and seed feeders |
|--------------------------|-------------|------------------|------------|--------------|----------------------|-----------------------|
| <i>Abies</i>             | 0           | 1                | 7          | 0            | 1                    | 0                     |
| <i>Juniperus</i>         | 0           | 1                | 1          | 0            | 0                    | 0                     |
| <i>Larix</i>             | 0           | 2                | 0          | 0            | 0                    | 0                     |
| <i>Picea</i>             | 0           | 2                | 3          | 0            | 0                    | 1                     |
| <i>Pinus</i>             | 1           | 2                | 4          | 0            | 0                    | 1                     |
| Pinaceae                 | 2           | 7                | 15         | 1            | 0                    | 3                     |
| Conifers                 | 1           | 6                | 2          | 0            | 0                    | 0                     |
| Conifers and angiosperms | 0           | 7                | 5          | 3            | 0                    | 0                     |
| Angiosperms              | 1           | 8                | 2          | 2            | 0                    | 1                     |
| Exotic species           | 3           | 0                | 2          | 0            | 0                    | 2                     |

**Fig. 5.** Comparison of the entomofauna exploiting cones and seeds in the introduced range (Europe) with that observed in the natural range (North America) of Douglas-fir. Each arrow indicates the approximate period of oviposition or predation (seed bug) of the corresponding species with regard to the phenology of cone development. The histograms figure the relative impact on seeds of *Megastigmus* seed chalcids compared with that of the other insects in both areas.

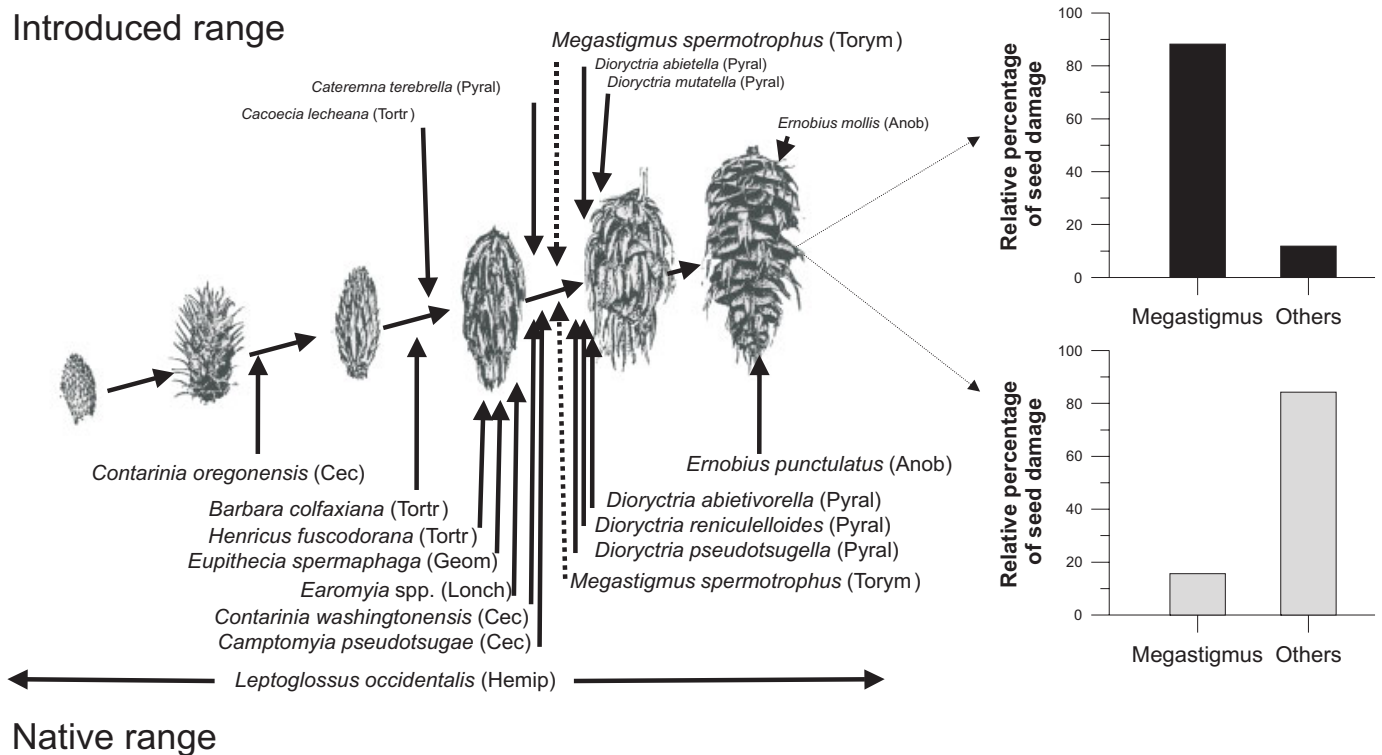


Table A2). Recruitment by *Cryptomeria japonica* was extremely limited, whereas that on *Thuja* spp. and *Chamaecyparis* spp. reached 28 and 16 indigenous insects, respectively. Given that reliable data about the native range's entomofauna existed for only a subset of the three guilds (i.e., external chewers, cone and seed feeders, and xylophages), the overall species richness for these three guilds in the area of introduction amounted only to 3.4%, 25.4%, and 57.9% of that observed in the native range of the three Cupressaceas genera, respectively ( $G = 11.694$ ,  $df = 2$ ,  $P = 0.003$ ; Table 2).

Recruitment also differed significantly among the feeding guilds for *Thuja* spp. ( $G = 13.131$ ,  $df = 2$ ,  $P = 0.001$ ; Table 2) because of a very limited recruitment of external chewers (four species) compared with the richness of the native range (46 species), but there was no such difference for *Chamaecyparis* spp. ( $G = 0.303$ ,  $df = 2$ ,  $P = 0.860$ ). The number of xylophagous species recruited by the *Thuja* spp. and *Chamaecyparis* spp. introduced into Europe was less than half of that in their native range. Cones and seeds were almost unexploited by insects except in *Chamaecyparis*. Not

**Table 2.** Colonization by insects of exotic Cupressaceae introduced in Europe compared with the entomofauna observed in the original range of the tree species (North America for *Chamaecyparis* spp. and *Thuja* spp., eastern Asia for *Cryptomeria japonica*), and degree of host specialization of the arthropod species.

| Species                     | Range  | Total insect species | External chewers | Xylophages | Cone and seed feeders | Exotic species | Monophages (%) | Oligophages (%) | Polyphages (%) |
|-----------------------------|--------|----------------------|------------------|------------|-----------------------|----------------|----------------|-----------------|----------------|
| <i>Chamaecyparis</i> spp.   | Europe | 16                   | 2                | 6          | 3                     | 2              | 0.0            | 60.0            | 40.0           |
|                             | Native | 22*                  | 5                | 10         | 4                     | 0              | 36.4           | 50.0            | 13.6           |
| <i>Cryptomeria japonica</i> | Europe | 2                    | 1                | 0          | 0                     | 0              | 0.0            | 0.0             | 100.0          |
|                             | Native | 30*                  | 7                | 6          | 16                    | 0              | 53.3           | 23.3            | 23.3           |
| <i>Thuja</i> spp.           | Europe | 28                   | 4                | 14         | 0                     | 1              | 0.0            | 50.0            | 50.0           |
|                             | Native | 81*                  | 46               | 20         | 5                     | 0              | 8.6            | 37.1            | 54.3           |

\*Data only partial.

one monophagous species was recruited, whatever the guild and the tree species (Table 2). The colonizing insect assemblage consisted equally of oligophagous species, capable of attacking several native Cupressaceae, and polyphagous species, developing on a large set of conifer species and even angiosperms (Appendix A, Table A2). The entomofauna observed in the native range of *Cryptomeria* and, to a lesser degree, *Chamaecyparis* spp. was more specialized. However, polyphagous species were dominant in the native range of *Thuja* spp.

An outbreak of indigenous insects has not yet been recorded in the introduced range of the three exotic Cupressaceae; however, a juniper flat-headed borer, *Lampra festiva* L., is causing increased damage on *Thuja* spp. in France, probably because of the drought conditions currently being observed (Chauvel 1997; A. Roques, unpublished results). Only two invasive species were observed. The midge, *Janetiella siskiyou* Felt, which exploits *Chamaecyparis* spp. seed cones, was recorded for the first time in 1931 in the Netherlands (De Meijère 1935). Being the sole occupant of the cone niche in Europe, it is now found all over Europe where *Chamaecyparis* plantations exist (Coutin 1976; Roques 1983). A similar process probably occurred with an arborvitae leafminer, *Argyresthia thuiella* (Packard), which was introduced from Canada during the 1970s (van Frankenhuisen 1974; Csóka 2001).

## Discussion

In all of the cases we examined, an exotic conifer species introduced into Europe without any native congeners had fewer insects associated with it than in its native range. However, large differences existed among species, with *Cryptomeria* having recruited only 3.4% of the number of associated species in its native Asian range, whereas this proportion reached 25.3% in *Thuja*, 33.9% in *Pseudotsuga menziesii*, and 57.9% in *Chamaecyparis*. Obviously, a bias was likely to exist because of differences in sampling efforts according to the economic value of the tree species, especially for *Cryptomeria*, but the data concerning the three last species generally supported the predictions of Strong (1974a, 1974b) regarding the asymptotic accumulation of species richness on new host trees. Strong's model predicted that more than 60% of the original value of the species richness is reached over an ecological time period, i.e., within ca. 300 years following introduction. Douglas-fir, which has been present in

Europe as large plantations for ca. 130 years, has accumulated ca. 60% of the original value.

It has also been speculated that the number of newly recruited species depends on the size of the plantations (Strong 1974c). This might explain the differences in recruitment observed in the exotic Cupressaceae. Although we cannot obtain precise data about the respective areas of plantations in Europe because they consist mostly of hedgerows, the comparatively lower number of species observed on *Cryptomeria* might be attributable to the smaller plantings of this tree species. On the other hand, a survey carried out in New Zealand revealed that introduced Douglas-fir accumulated 77 insect species there (Zondag 1982; USDA 1992), i.e., 88.5% of the number of species recruited in Europe, although the plantation area is about six times as small (109 000 vs. 650 000 ha). In addition, the total arthropod recruitment on Douglas-fir in Europe was not so different from that observed for an exotic conifer with native congeners, lodgepole pine. Lindelöw and Björkman (2001) counted a total of 81 species of indigenous insect species that shifted to this exotic species in 600 000 ha of plantations in Sweden. This corresponded roughly to 20% of the species richness in the native American range, which we estimated (ca. 400 species) using data from Furniss and Carolin (1992). By contrast, Evans (1987) found that Sitka spruce had more species of acquired phytophages in Great Britain than in its native North America (90 vs. 59). However, the plantation area reached ca. 700 000 ha in Great Britain in 1995 (from National Forest inventories of England, Wales, and Scotland; Forestry Commission 2001a, 2001b, 2002), which corresponds to about two times that of its natural area in the native range (calculated from map supplied in Burns and Honkala 1990).

Although the total number of recruited species was rather similar, a comparison of the number of European species respectively observed per insect order on Douglas-fir and lodgepole pine (using data from Lindelöw and Björkman 2001) revealed significant differences in the faunal patterns ( $G = 10.304$ ,  $df = 5$ ,  $P = 0.0356$ ; analysis with Hemiptera and Homoptera grouped together). This was due to a proportionally more important recruitment of Lepidoptera in Douglas-fir (39.1% vs. 23.5% in lodgepole pine) and of Hymenoptera in lodgepole pine (14.8% vs. 3.4% in Douglas-fir).

Not surprisingly, polyphagous species tended to be better colonizers of alien plants than specialists (Strong et al. 1984; Zwölfer 1988; Fraser and Lawton 1994). Novotny et al. (2003)

showed that the probability that a caterpillar species colonizes alien *Piper* spp. in Papua New Guinea increases with the host range from 3% for the species feeding on a single plant family to 92% for the species with a host range greater than 10 families. This pattern was clearly observed for Douglas-fir as well as for the three species of exotic Cupressaceae, where generalists feeding on several plant families, often including angiosperms, represented 42.5% (Douglas-fir) to 100% (*Cryptomeria*) of the colonizing insects. The opposite pattern was observed for the recruitment of insect species by lodgepole pine, where monophagous and oligophagous species showed greater colonization compared with species with broader host-plant ranges (58.0% and 30.9% vs. 11.1%; Lindelöw and Björkman 2001). Moreover, in that case, specialist lepidopteran species originating from congeneric native Scots pine were significantly more likely to be recruited than were insects originating from other hosts. Lindelöw and Björkman (2001) suggested that dominance of specialists among the species that shifted to the exotic tree is related to the similarity in chemistry and morphology between the two *Pinus* species. Similar trends were difficult to observe in conifers without native congeners, Douglas-fir as well as exotic Cupressaceae. According to recent phylogenetic analyses, the closest relative of Douglas-fir (*Pseudotsuga*) appears to be the genus *Larix*, and the sister group of *Pseudotsuga*–*Larix* is considered to be *Pinus*–*Picea* (Wang et al. 2000). Actually, *Larix* contributed very little to the recruitment, whereas most of the monophagous colonizers came from *Abies alba* and *Pinus* spp., and *Picea* when the primary host was considered for the species capable of shifting on several Pinaceae. In exotic Cupressaceae, where no specialist has yet been recorded, the relative importance of oligophagous insects related to the family Cupressaceae in the recruitment on *Thuja* (50%) and, even more, *Chamaecyparis* (60%) suggested closer relationships among tree species of this family than in Pinaceae. On the contrary, the case of *Cryptomeria* showed that this mechanism was not efficient for all species, and that other barriers probably existed. As pointed out by Hatcher (1994), it was not the taxonomic relationship per se that seemed to be important, but the associated similarities in host plants, especially in the secondary chemicals.

Differences in phytophage recruitment by exotic introduced plants were also observed according to guilds and insect feeding habits (Cornell and Khan 1989; Fraser and Lawton 1994; DeGomez and Wagner 2001). The time available for colonization appeared to be important. Strong et al. (1984) suggested that the externally feeding herbivores are more likely to rapidly colonize alien hosts than are insects feeding within plant tissue (endophagous), and certain specialized guilds, such as those exploiting flowers and seeds, may even be totally absent in recently colonized areas (Zwölfer 1988). This pattern was clearly observed for cone and seed insects of both Douglas-fir and exotic Cupressaceae, which were hardly or not at all colonized. By contrast, the pine cone weevil, *Pissodes validirostris* Gyll., shifted from Scots pine to lodgepole pine all over Europe, to the point where the latter species tended to become its preferred host (Annala 1975; Roques 1983; Delplanque et al. 1988). The other kinds of endophagous insects (e.g., bud and shoot borers) were still absent on Douglas-fir and exotic Cupressaceae in Europe,

whereas ectophagous species such as external chewers and sap suckers dominated together with xylophages. Although the overall composition of the feeding guilds recruited by Douglas-fir in Europe and lodgepole pine in northern Europe did not differ significantly by the number of species ( $G = 9.717$ ,  $df = 6$ ,  $P = 0.083$ ), the proportion of bud- and shoot-boring insects (9.3% vs. 1.1%) and that of foliage-feeding sawflies (12.0% vs. 0%) were noticeably more important in lodgepole pine. Moreover, when Lindelöw and Björkman (2001) calculated the proportion of lepidopteran species recruited by lodgepole pine with regard to the pool present in Sweden, the proportion was highest for shoot- and bud-boring insects and lowest for externally feeding species. These authors suggested that the differences in guild pattern may be due to the specific chemical and morphological properties of the different types of plant tissues. Such a calculation was difficult to accomplish in our case because all forest insects would have to be considered. Fraser and Lawton (1994) also identified a suite of features in British moths that could be associated with the propensity to undergo host range expansion onto introduced conifers, and they suggested that ecological opportunity is an important factor in host range expansion. Such features included feeding on a wide range of woody trees and shrubs, overwintering as ova, and eclosing from the egg in early spring or summer. In addition, the occurrence of grassland, heath, and upland habitats and feeding on certain plant families that are ecologically associated with conifer afforestation (Ericaceae, Salicaceae) increased the likelihood of host shifting. It would be interesting to test the pertinence of these criterion for the insects that have colonized Douglas-fir in Europe.

In contrast to the limited number of outbreaks as yet observed on exotic conifers without native congeners in Europe, many native herbivorous insects were observed to develop outbreaks on lodgepole pine. Lindelöw and Björkman (2001) noticed four species of lepidopteran defoliators (*Dendrolimus pini*, *Lymantria monacha*, *Bupalus piniara*, *Panolis flammea*). Most of these species have also colonized Douglas-fir (see Appendix A, Table A1) but have not develop into outbreaks on this tree species. In addition, larch budmoth, *Zeiraphera diniana* Guénéé (Baltensweiler et al. 1977), sawflies (*Neodiprion sertifer*), shoot borers (*Rhyacionia buoliana*), and cone feeders (*Pissodes validirostris*) were capable of outbreaks on lodgepole pine (Delplanque et al. 1988). In the latter case, the difficulty for native parasitoids in locating the weevil larvae developing in an exotic introduced host was assumed to be the major factor allowing such damage on cones of lodgepole pine compared with Scots pine (Annala 1975; Delplanque et al. 1988). Similarly, there were several examples of outbreaks on Sitka spruce of insects coming from congeneric Norway spruce (*Picea abies*), such as European spruce sawfly, *Gilpinia hercyniae* (Hartig) (Williams et al. 2003), green spruce aphid, *Elatobium abietinum* (Walker) (Hendry et al. 2001; Halldorsson et al. 2003), and galling adelgids (Jaskiewicz et al. 2002). A polyphagous defoliator, winter moth, *Operophtera brumata* L., which is primarily associated with deciduous trees, also expanded its range to outbreak on Sitka spruce (Vanbergen et al. 2003).

The enemy-free-space hypothesis, such as formulated by Lawton and McNeill (1979) and Price et al. (1980), may also elucidate relative success of exotic introduced insects in



colonizing trees without congeners. In the near absence of natural enemies and indigenous competitors, exotic introduced insects such as the Douglas-fir seed chalcid, *M. spermotrophus*, and the yellow-cedar seed midge, *Janetiella siskiyou*, tended to occupy the whole seed-cone niche and caused more damage than in their native ranges (Coutin 1976; Rappaport and Roques 1991; Roques et al. 2003). Besides cone and seed insects, Fabre (1994) and Fabre et al. (1999) observed a similar situation for true cedar (*Cedrus atlantica* (Endl.) Manetti) planted in southern Europe without native congeners, which was severely damaged by exotic aphids (*Cedrobium laportei* Remaud. and *Cinara cedri* Mimeur) and tortricids (*Epinotia cedricida* Diak.) introduced along with the tree species. However, exotic introduced insects may also outbreak on exotic trees with congeners, although these insects have to cope with a number of competitors. For example, such outbreaks were observed in fir woolly adelgid, *Dreyfusia nordmanianna* (Eckstein) on *Abies nordmanianna* (Stev.) Spach. (Bejer 1981), and in a North American fir seed chalcid, *Megastigmus rafni*, on *Abies* spp. (Fabre et al. 2004).

## Conclusions

Douglas-fir and the exotic Cupressaceae that were introduced into Europe without indigenous congeners tended to recruit native arthropods in a different way than did lodgepole pine, a species with native congeners. Recruitment of the former species, which is rather high considering the limited duration of exposure to native insects, mainly originated from polyphagous species that were not yet capable of saturating the new niches, whereas the recruitment mostly proceeded from monophagous and oligophagous species coming from congeneric tree species in the latter case. However, before drawing any definite conclusions, it would be necessary to examine a larger set of data including several species of exotic conifers with indigenous congeners such as Sitka spruce, Japanese larch (*Larix leptolepis*, (Siebold & Zucc.) Gord.), and Monterey pine, which have been densely planted in some parts of Europe.

An increase in arthropod species diversity on exotics over time is to be expected, especially if the range size increases. However, the introduction in Europe of exotic insect species highly adapted to the exotic host tree might create much more problems when conifers have no indigenous congeners because guilds are yet unsaturated, and the introduction of related exotic species, such as a Douglas-fir bark beetle, *Dendroctonus pseudotsugae*, is likely to result in a full occupancy of the niche. In this respect, quarantine procedures probably need to be reinforced for conifers without any congeners.

## Acknowledgements

The research has been partly funded by the European Commission within the FP 6 Integrated Project "ALARM" (GOCE-CT-2003-506675). We are very grateful to Nancy Gillette (USDA Berkeley) for generously supplying data about phytophagous insects on Douglas-fir in North America and for editing the manuscript with Jean J. Turgeon (Forestry Canada, Sault Ste. Marie, Ontario). We also thank very much

the three anonymous reviewers for their critical feedback, which largely helped to improve the text.

## References

- Abgrall, J.F. 1991. Observations biologiques et essais de lutte contre le Hanneton commun dans les vergers à graines. *Rev. For. Fr.* **43**: 489–500.
- AFOCEL. 2004. Memento 2004. Available from <http://www.afocel.fr/Publications/Memento> [accessed 22 October 2004].
- Annala, E. 1975. The biology of *Pissodes validirostris* Gyll. (Col., Curculionidae) and its harmfulness, especially in Scots pine seed orchards. *Commun. Inst. For. Fenn.* **85**: 1–95.
- Bain, J. 1977. *Megastigmus spermotrophus* Wachtl (Hymenoptera: Chalcidoidea: Torymidae). *Forest and Timber Insects in New Zealand No. 14*, New Zealand Forest Service, Rotorua, New Zealand.
- Baltensweiler, W., Benz, G., Bovey, P., and Delucci, P. 1977. Dynamics of larch budmoth populations. *Annu. Rev. Entomol.* **22**: 79–100.
- Battisti, A., Stastny, M., Netherer, S., Robinet, C., Schopf, A., Roques, A., and Larsson, S. 2005. Expansion of the geographic range in pine processionary moth caused by increased winter temperatures. *Ecol. Appl.* **15**: 2084–2096.
- Baumann, H. 1982. Die griechische Pflanzenwelt in Mythos. Kunst und Literatur, Hirmer, Munich.
- Bejer, B. 1981. Insect risks for introduced and native conifers in Northern Europe, especially in the Nordic countries. *EPPO Bull.* **11**: 183–185.
- Bernardinelli, I., and Zandigiacomo, P. 2002. Prima segnalazione per il friuli-venezia giulia del "cimicione delle conifere" (*Leptoglossus occidentalis*). *Not. ERSA*, **15**: 44–46.
- Bevan, D., and Brown, R.M. 1978. Pine looper moth. *For. Rec. (London)* 119.
- Binazzi, A. 1978. Contribution to the knowledge of aphids on conifers I. The species of the genera *Cinara* Curt., *Schizolachnus* Mordv., *Cedrobium* Remaud. and *Eulachnus* D. Gu. present in Italy (Homoptera Aphidoidea Lachnidae). *Redia*, **41**: 291–400. [In Italian.]
- Borowski, J. 1997. Harmful insects feeding on needles, buds, and young shoots of Douglas fir (*Pseudotsuga menziesii* Franco). *Sylwan*, **141**: 85–87. [In Polish.]
- Bright, D.E., Jr. 1976. The bark beetles of Canada and Alaska, Coleoptera Scolytidae. The insects and arachnids of Canada. Part 2. Canadian Department of Agriculture, Ottawa, Ont.
- Burns, R.M., and Honkala, B.H. (Technical coordinators). 1990. *Silvics of North America: 1. Conifers*. US Dep. Agric. Agric. Handb. 654.
- Burzynski, J. 1978. Studies on the build-up of an outbreak of *Orgyia antiqua* in forest areas. *Sylwan*, **122**: 51–58. [In Polish.]
- Chauvel, G. 1997. Éléments de biologie et de lutte contre le bupreste du Thuya: *Lampra festiva*. *Phytoma*, **4**: 451.
- Connor, E.F., Faeth, S.H., Simberloff, D., and Opler, P.A. 1980. Taxonomic isolation and the accumulation of herbivorous insects: a comparison of introduced and native trees. *Ecol. Entomol.* **5**: 205–211.
- Cornell, H.V., and Khan, D.M. 1989. Guild structure in the British boreal arthropods: is it stable and predictable? *J. Anim. Ecol.* **58**: 1003–1020.
- Coutin, R. 1976. Une cécidomyie nouvelle en France, ravageur des graines du Cypripès de Lawson: *Janetiella siskiyou* Felt, 1917 (= *Craneobia lawsoniana* De Meijere, 1935). *Bull. Soc. Entomol. Fr.* **81**: 2–8.

- Csóka, G. 2001. Recent invasions of five species of leafmining Lepidoptera in Hungary. *In* Integrated management and dynamics of forest defoliating insects. USDA For. Serv. Gen. Tech. Rep. NE-277.
- Czaja, A. 2000. *Pseudotsuga jechorekiae* sp. nova the first fossil finding of the genus *Pseudotsuga* Carriere after cones from the Miocene of Lusatia, Germany. *Feddes Repert.* **111**: 129–134.
- Čermák, K. 1952. Hmyzi škůdci semen našich lesních dřevin. Brazda, Prague.
- De Champs, J. 1997. Le Douglas. AFOCEL, Paris.
- de Freina, J., and Witt, T. 1987. Die Bombyces und Sphingees der Westpalaearkt. Band 1. Forschung & Wissenschaft Verlag GmbH, Munich.
- DeGomez, T.E., and Wagner, M.R. 2001. Arthropod diversity of exotic vs. native *Robinia* spp. in northern Arizona. *Agric. For. Entomol.* **3**: 19–27.
- Delplanque, A., Giovanini, J.P., Augustin, S., and Roques, A. 1988. Primeros problemas entomologicos consecutivos a la introduccion de *Pinus contorta* Douglas en Francia. *Plagas For.* **16**: 123–132.
- De Meijere, J.C.H. 1935. Über *Craneiobia lawsonianae* de Meij., eine Gallmücke aus den Früchten von *Chamaecyparis lawsoniana* (Dipt. Itonidae). *Tijdschr. Entomol.* **78**: 129–133.
- Dominik, J. 1972. Results of 20 years long observations on the damage done by insects to certain forest tree species in the Experimental Forest, Agricultural University, at Rogów. *Sylwan*, **116**: 11–18. [In Polish.]
- Dominik, J. 1979. Threats to North American conifers planted in Poland from native insects and fungi taking into account the effects of industrial air pollution on forests. *Lesnictwo*, **27**: 7–23. [In Polish.]
- Dominik, J. 1980. Remarks on some buprestids (Col., Buprestidae) as wood pests. *Sylwan*, **124**: 31–33. [In Polish.]
- Drooz, A.T., and Bustillo, A.E. 1972. *Glena bisulca*, a serious defoliator of *Cupressus lusitanica* in Columbia. *J. Econ. Entomol.* **65**: 89–93.
- Du Merle, P., Brunet, S., and Cornic, J.F. 1992. Polyphagous potentialities of *Choristoneura murinana* (Hb.) (Lep., Tortricidae): a “monophagous” folivore extending its host range. *J. Appl. Entomol.* **113**: 18–40.
- Duncan, R.W. 1996. Common insects damaging junipers, cedars and cypresses in British Columbia. *Can. For. Serv. For. Pest Leafl.* 70.
- Evans, H.F. 1987. Sitka spruce insects: past, present and future. *Proc. R. Soc. Edinb. Sect. B*, **93**: 157–167.
- Fabre, J.P. 1994. État actuel des connaissances sur les ravageurs originaires de l’aire naturelle des cèdres parvenus en France, colonisation par les insectes d’un nouvel écosystème forestier. *Ann. Sc. For. Maroc*, **27**: 540–551.
- Fabre, J.P., Mouna, M., Du Merle, P., and Benhalima, S. 1999. Le point sur certains ravageurs du cèdre de l’atlas en Afrique du Nord, en France et en Europe. *For. Médit.* **20**: 203–221.
- Fabre, J.P., Auger-Rozenberg, M.A., Chalon, A., Boivin S., and Roques A. 2004. Competition between exotic and native insects for seed resources in trees of a Mediterranean forest ecosystem. *Biol. Invasions*, **6**: 11–22.
- Forestry Commission. 2001a. National inventory of woodlands and trees — England. Forestry Commission, Edinburgh, Scotland.
- Forestry Commission. 2001b. National inventory of woodlands and trees — Scotland. Forestry Commission, Edinburgh, Scotland.
- Forestry Commission. 2002. National inventory of woodlands and trees — Wales. Forestry Commission, Edinburgh, Scotland.
- Fraser, S.M., and Lawton, J.H. 1994. Host range expansion by British moths onto introduced conifers. *Ecol. Entomol.* **19**: 127–137.
- Furniss, R.L., and Carolin, V.M. 1992. Western Forest Insects. USDA For. Serv. Misc. Publ. 1339.
- Gogala, A. 2003. A leaf-footed conifer seed bug (*Leptoglossus occidentalis*) in Slovenia already (Heteroptera: Coreidae). *Acta Entomol. Slovic.* **11**: 189–190. [In Slovenian.]
- Goix, J. 1982. Le chermes du sapin de Douglas. *Phytoma*, **335**: 31–32.
- Golan, K. 2003. Observations on the biology and management of *Parthenolecanium fletcheri* (Cockerell) (Hemiptera, Coccidae). *Sodininkyste ir Darzininkyste*, **22**: 164–170. [In Polish.]
- Golan, K., and Jaskiewicz, B. 2002. Noxiousness and control of the juniper mummy bug, *Planococcus vovae*. *Ochr. Rostl.* **46**: 11–12. [In Polish.]
- Gomboc, S. 2003. New leaf miner species established in Slovenia. *In* 6th Slovenian Conference on Plant Protection, 4–6 March 2003, Zrece, Slovenia. Biotehniška Fakulteta, Ljubljana. pp. 423–429. [In Slovenian.]
- Grüne, G. 1979. Brief illustrated key to European Bark beetles. M. Verlag and H. Schapper, Hanover, Germany.
- Halldorsson, G., Benedikz, T., Eggertsson, O., Oddsdottir, E.S., and Oskarsson, H. 2003. The impact of the green spruce aphid *Elatobium abietinum* (Walker) on long-term growth of Sitka spruce in Iceland. *For. Ecol. Manage.* **181**: 281–287.
- Hatcher, P. 1994. The importance of needle terpene composition in determining the macrolepidoptera species richness of Canadian conifers. *Oikos*, **71**: 526–534.
- Hatcher, P.E., and Winter, T.G. 1990. An annotated checklist of British conifer-feeding macro-Lepidoptera and their foodplants. *Entomol. Gaz.* **41**: 177–196.
- Hedlin, A.F. 1974. Cone and seed insects of British Columbia. Canadian Forestry Service, Pacific Forest Research Centre, Victoria, B.C.
- Hedlin, A.F., Yates, H.O. III, Cibrian-Tovar, D., Ebel, B.H., Koerber, T.W., and Merkel, E.P. 1980. Cone and seed insects of North American conifers Canadian Forestry Service, USDA Forest Service, and Secretaría de Agricultura y Recursos Hidráulicos, Mexico City.
- Hellrig, K.G. 1978. Ökologie und Brutpflanzen europäischer Prachtkäfer (Col., Buprestidae). *Z. Angew. Entomol.* **85**: 167–191.
- Hendry, S.J., Boswell, R.C., and Proudfoot, J.C. 2001. Forest condition 2000. *For. Comm. Inf. Note* 41.
- Holsten, E.H., Hennon, P.E., and Werner, R.A. 1985. Insects and diseases of Alaskan forests. USDA For. Serv. Alaska Reg. Rep. 181.
- Hrubik, P. 1973. Fytofágný kmyz introdukovanych dřevín na slovensku. *Entomol. Probl.* **11**: 56–156.
- Janzen, D.H. 1986. Does a hectare of cropland equal a hectare of wild host plant? *Am. Nat.* **128**: 147–149.
- Jarry, M., Candau, J.N., Roques, A., and Ycart, B. 1997. Monitoring the impact of a seed chalcid, *Megastigmus spermotrophus* Wachtl (Hymenoptera: Torymidae) on seed production in a Douglas-fir seed orchard in France: modelling of the orchard invasion by non-resident chalcids. *Can. Entomol.* **129**: 7–19.
- Jaskiewicz, B., Kmiec, K., and Golan, K. 2002. Adelgids — pests on conifers. *Ochr. Rostl.* **46**: 17–18. [In Polish.]
- Kay, M. 1983. Predicting outbreaks of *Pseudocoremia suavis* on Douglas-fir. *N.Z. J. For.* **28**: 68–72.
- Keen, F.P. 1958. Cone and seed insects of western forest trees. *US Dep. Agric. Tech. Bull.* 1169.
- Kennedy, C.E.J., and Southwood, T.R.E. 1984. The number of species of insects associated with British tress: a re-analysis. *J. Anim. Ecol.* **53**: 455–478.
- Kobayashi, F. 1976. Forest insect pests and their control in Japan. *In* Plant protection in Japan. pp. 280–288.

- Kobayashi, K. 1981. Cone and seed insects of Japanese conifers. *In* Proceedings 17th IUFRO World Congress, 6–17 September 1981, Kyoto, Japan. IUFRO Secretariat, Vienna. pp. 455–461.
- Křístek, J., Jančařík, V., Procházková, Z., Skrzypczyńska, M., and Urošević, B. 1992. Škůdci semen šišek a plodů lesních dřevin. Brazda, Prague.
- Lawton, J.H., and McNeill, S. 1979. Between the devil and the deep blue sea: on the problem of being an herbivore. *Symp. Brit. Ecol. Soc.* **20**: 233–244.
- Lawton, J.H., and Schröder, D. 1977. Effects of plant type, size of geographical range and taxonomic isolation on number of insect species associated with British plants. *Nature (Washington, D.C.)*, **265**: 37–40.
- Leather, S. 1986. Insect species richness of the British Rosaceae: the importance of host range, plant architecture, age of establishment, taxonomic isolation and species-area relationships. *J. Anim. Ecol.* **55**: 841–860.
- Legrand, P. 1990. Les problèmes entomologiques, pathologiques et physiologiques : le Douglas. *In* La santé des forêts en 1989. Ministère de l'Agriculture et de la Pêche, Paris. pp. 12–13.
- Legrand, P. 1997. L'état sanitaire du sapin de Douglas en France. *In* La santé des forêts en 1997 — bilan annuel. Les cahiers du DSF 1-1997. Ministère de l'Agriculture et de la Pêche, Paris. pp. 38–45.
- Legrand, P. 2004. Evolution de quelques problèmes phytosanitaires majeurs et nouveaux dépérissements du Douglas en France. *In* La santé des forêts en 2002 — bilan annuel. Les cahiers du DSF 1-2003/2004. Ministère de l'Agriculture et des Affaires Rurales, Paris. pp. 39–45.
- Li, X.G., and Li, K.S. 1997. Checklist of insects exploiting cones and seeds of conifers in China. *In* Proceedings 5th Cone and Seed Insects IUFRO Working Party Conference (IUFRO S7.03-01), 2–7 September 1996, Monte Bondone, Italy. *Edited by* A. Battisti and J.J. Turgeon. Institute of Agricultural Entomology, Padova, Italy. pp. 31–40.
- Lindelöw, A., and Björkman, C. 2001. Insects on lodgepole pine in Sweden — current knowledge and potential risks. *For. Ecol. Manage.* **141**: 107–116.
- Liu, Y.Q. 1987. Microlepidoptera feeding on fruits and seeds of woody plants in China. *For. Pest Dis.* **1**: 30–35. [In Chinese.]
- Maitland Emmet, A., Langmaid, J., and Heath, J. 1996. The moths and butterflies of Great Britain and Ireland. Vol. 3: Yponomeutidae–Elachistidae. Blackwells and Curwen, London.
- Moran, V.C., and Southwood, T.R.E. 1982. The guild composition of arthropod communities in trees. *J. Anim. Ecol.* **51**: 289–306.
- Nageleisen, L.M. 2002. Colonization par les insectes des bois sinistrés lors des tempêtes de Décembre 1999: Résultats du dispositif national de suivi. *In* La santé des forêts en 2000–2001 — bilan annuel. Les cahiers du DSF 1-2002. Ministère de l'Agriculture et des Affaires Rurales, Paris. pp. 45–54.
- Neuvonen, S., and Niemelä, P. 1981. Species richness of macrolepidoptera on Finnish deciduous trees and shrubs. *Oecologia*, **51**: 364–370.
- Niemelä, P., and Mattson, W.J. 1996. Invasion of North American forests by European phytophagous insects: Legacy of the European crucible? *BioScience*, **46**: 741–753.
- Novotny, V., Miller, S.E., Cizek, L., Leps, J., Janda, M., Basset, Y., Weiblen, G.D., and Darrow, K. 2003. Colonising aliens: caterpillars (Lepidoptera) feeding on *Piper aduncum* and *P. umbellatum* in rainforests of Papua New Guinea. *Ecol. Entomol.* **28**: 704–716.
- Parry, W.H., and Spires, S. 1982. Studies on the factors affecting the population levels of *Adelges cooleyi* (Gillette) on Douglas fir. 4. Polymorphism in progredientes. *Zeit. Angew. Entomol.* **94**: 253–263.
- Price, P.W., Bouton, C.E., Gross, P., McPherson, B.A., Thompson, J.N., and Weiss, A.E. 1980. Interactions among three trophic levels: influence of plants on interactions between insect herbivores and natural enemies. *Annu. Rev. Ecol. Syst.* **11**: 41–65.
- Rappaport, N., and Roques, A. 1991. Resource use and clonal differences in attack rate by the Douglas-fir seed chalcid, *Megastigmus spermotrophus* Wachtl (Hymenoptera: Torymidae), in France. *Can. Entomol.* **123**: 1219–1228.
- Rappaport, N.G., and Volney, W.J.A. 1989. Effect of pest species exclusions on Douglas-fir (*Pseudotsuga menziesii* (Mirb.) Franco) cone and seed insects: implications for pest management. *In* Proceedings 3rd Cone and Seed Insects Working Party Conference, 27–30 June 1988, Victoria, B.C. *Edited by* G. Miller. Pacific Forestry Centre, Forestry Canada, Victoria, B.C. pp. 142–150.
- Roques, A. 1981. Biologie et répartition de *Megastigmus spermotrophus* Wachtl (Hymenoptera Chalcidoidea Torymidae) et des autres insectes liés aux cônes dans les peuplements forestiers et vergers à graines français de sapin de Douglas *Pseudotsuga menziesii* (Mirb.) Franco. *Acta Oecol. Oecol. Appl.* **2**: 161–180.
- Roques, A. 1983. Les insectes ravageurs des cônes et graines de conifères en France. Institut National de la Recherche Agronomique, Versailles, France.
- Roques, A., and Skrzypczyńska, M. 2003. Seed-infesting chalcids of the genus *Megastigmus* Dalman (Hymenoptera: Torymidae) native and introduced to Europe: taxonomy, host specificity and distribution. *J. Nat. Hist.* **37**: 127–238.
- Roques, A., Sun, J.H., Auger-Rozenberg, M.A., and Hua, O. 2003. Potential invasion of China by exotic insect pests associated with tree seeds. *Biodivers. Conserv.* **12**: 2195–2210.
- Rouault, G. 2002. Biologie et répartition des punaises du genre *Orsillus* (Heteroptera: Lygaeidae) associées aux Cupressaceae : une étude de l'impact d'un pathogène introduit sur les interactions cônes-insectes. Ph.D. dissertation, Université d'Orléans, Orléans, France.
- Roversi, P.F., and Nocentini, S. 1996. Impact of Douglas fir woolly aphid (*Gilletteella coweni* (Gillette)), Homoptera: Adelgidae, on host plant growth. *Ital. For. Mont.* **51**: 50–59. [In Italian.]
- Roversi, P.F., Baccetti, C., Fabbriatore, T., Covassi M., and Nocentini, S. 1993. Entomofauna fitofaga della *Pseudotsuga menziesii* (Mirb.) Franco var. *menziesii* in aree appenniniche. *Ann. Ist. Sper. Selvic.* **24**: 49–62.
- Sauer, J.D. 1988. Plant migration: the dynamics of geographic patterning in seed plant species. University California Press, Berkeley, Calif.
- Schowalter, T.D., and Harverty, M.I. 1989. Influence of host genotype on Douglas-fir seed losses to *Contarinia oregonensis* (Diptera: Cecidomyiidae) and *Megastigmus spermotrophus* (Hymenoptera: Torymidae) in Western Oregon. *Environ. Entomol.* **18**: 94–97.
- Schwenke, W. 1982. Die Forstschädlinge Europas. Paul Parey, Hamburg, Berlin.
- Skrzypczyńska, M. 1996. Owady-szkodniki nasion i szyszek drzew iglastych. Gutenberg, Kraków.
- Sokal, R.R., and Rohlf, F.J. 1995. Biometry. 3rd ed. Freeman and Co., New York.
- Southwood, T.R.E. 1960. The abundance of the Hawaiian trees and the number of their associated insect species. *Proc. Hawaiian Entomol. Soc.* **17**: 299–303.
- Stephan, B.R. 1987. Differences in the resistance of Douglas fir provenances to the woolly aphid *Gilletteella cooleyi*. *Silvae Genet.* **36**: 76–79.



- Strong, D.R., Jr. 1974a. The insects of British trees and community equilibration in ecological time. *Ann. Mo. Bot. Gard.* **61**: 692–701.
- Strong, D.R., Jr. 1974b. Rapid asymptotic species accumulation in phytophagous insect communities: the pests of cacao. *Science (Washington, D.C.)*, **185**: 1064–1066.
- Strong, D.R., Jr. 1974c. Nonasymptotic species richness models and the insects of British trees. *Proc. Natl. Acad. Sci. USA*, **71**: 2766–2769.
- Strong, D.R., Jr., McCoy, E.D., and Rey, J.R. 1977. Time and the number of herbivore species: the pests of sugarcane. *Ecology*, **58**: 167–175.
- Strong, D.R., Lawton, J.H., and Southwood, T.R.E. 1984. *Insects on plants*. Blackwell, Oxford, UK.
- Szelegiewicz, H. 1975. An outbreak of *Elatobium abietinum* in parks and green areas of Warsaw. *Pol. Pismo. Entomol.* **45**: 597–599. [In Polish.]
- Tahvanainen, J., and Niemelä, P. 1987. Biogeographical and evolutionary aspects of insect herbivory. *Ann. Zool. Fenn.* **24**: 239–247.
- Ülgentürk, S., and Çanakcioğlu, H. 2004. Scale insect pests on ornamental plants in urban habitats in Turkey. *J. Pest Sci.* **77**: 79–84.
- Ülgentürk, S., Çanakcioğlu, H., and Kaygin, A.T. 2004. Scale insects of the conifer trees in Turkey and their zoogeographical distribution. *J. Pest Sci.* **77**: 99–104.
- USDA Forest Service. 1992. Pest risk assessment of the importation of *Pinus radiata*, and Douglas-fir logs from New Zealand. USDA For. Serv. Misc. Pub. 1508.
- van Frankenhuisen, A. 1974. *Argyresthia thuiella* (Pack.) (Lep. Argyresthiidae). *Entomol. Ber.* **34**: 106–111.
- van Tol, R.W.H.M., van der Sommen, A.T.C., Boff, M.I.C., van Bezooijen, J., Sabelis, M.W., and Smits, P.H. 2001. Plants protect their roots by alerting the enemies of grubs. *Ecol. Lett.* **4**: 292–294.
- Vanbergen, A.J., Raymond, B., Pearce, I.S.K., Watt, A.D., Hails, R.S., and Hartley, S.E. 2003. Host shifting by *Operophtera brumata* into novel environments leads to population differentiation in life-history traits. *Ecol. Entomol.* **28**: 604–612.
- Viitasaari, M. 1984. Siricoidea, Orussoidea and Cephoidea. University of Helsinki, Helsinki. Dept. Agric. For. Zool. Rep. 6. [In Finnish.]
- Vouland, G., Cornic, J.F., and du Merle, P. 1990. Un cas de dépérissement de jeunes Douglas lié à des attaques d'insectes (*Dioryctria mutata*, Lepidoptere Pyralidae; *Pityogenes quadridens*, Coleoptere Scolytidae). *Rev. For. Fr.* **42**: 510–512.
- Wang, X.Q., Tank, D.C., and Sang, T. 2000. Phylogeny and divergence times in Pinaceae: evidence from three genomes. *Mol. Biol. Evol.* **17**: 773–781.
- Williams, D.T., Straw, N.A., and Day, K.R. 2003. Defoliation of Sitka spruce by the European spruce sawfly, *Gilpinia hercyniae* (Hartig): a retrospective analysis using the needle trace method. *Agr. For. Entomol.* **5**: 235–245.
- Winter, T.G. 1989. Cypress and juniper aphids. Department of the Environment, UK. *Arboric. Res. Note* 80.
- Wood, D.L., Koerber, T.W., Scharpf, R.F., and Storer A.J. 2003. *Pests of native Californian conifers*. California Natural History Guides, University of California Press, Berkeley, Calif.
- Yates, H.O. III 1986. Checklist of insects and mites species attacking cones and seeds of world conifers. *J. Entomol. Sci.* **21**: 142–168.
- Zobel, B.G., Van Wyk, G., and Stahl, P. 1987. *Growing exotic forests*. John Wiley and Sons, New York.
- Zondag, R. 1982. Insects of the exotic forests of the central North Island. *N.Z. Entomol.* **7**: 276–280.
- Zwölfer, H. 1988. Evolutionary and ecological relationships of the insect fauna of thistles. *Annu. Rev. Entomol.* **33**: 103–122.

## Appendix A

Appendix appears on the following page.



**Table A1.** List of the arthropod species having colonized Douglas-fir in Europe, with their primary host plant (main host genus) and global host range.

| Arthropod species and order                 | Family        | Guild                        | Primary host*      | Host range*        | Reference           |
|---|---------------|------------------------------|--------------------|--------------------|---------------------|
| <b>Coleoptera</b>                           |               |                              |                    |                    |                     |
| <i>Ernobius mollis</i> L.                   | Anobiidae     | Cone feeder, xylophagous     | Pinaceae           | Pinaceae           | Roques 1983         |
| <i>Stephanopachys substriatus</i> Paykull   | Bostrychidae  | Xylophagous                  | Pinaceae           | Pinaceae           | Schwenke 1982       |
| <i>Antaxia helvetica</i> Stierlin           | Buprestidae   | Xylophagous                  | <i>Juniperus</i>   | <i>Juniperus</i>   | Roversi et al. 1993 |
| <i>Chrysobothris solieri</i> Laporte & Gory | Buprestidae   | Xylophagous                  | <i>Pinus</i>       | <i>Pinus</i>       | Roversi et al. 1993 |
| <i>Corymbia rubra</i> L.                    | Cerambycidae  | Xylophagous                  | Pinaceae           | Pinaceae           | Dominik 1972        |
| <i>Morimus asper</i> (Sulzer)               | Cerambycidae  | Xylophagous                  | Polyphagous (c, a) | Polyphagous (c, a) | Roversi et al. 1993 |
| <i>Prionus coriarius</i> (L.)               | Cerambycidae  | Xylophagous                  | Polyphagous (c, a) | Polyphagous (c, a) | Dominik 1972        |
| <i>Tetropium castaneum</i> (L.)             | Cerambycidae  | Xylophagous                  | <i>Picea</i>       | Pinaceae           | Dominik 1972        |
| <i>Tetropium fuscum</i> (F.)                | Cerambycidae  | Xylophagous                  | <i>Picea</i>       | Pinaceae           | Dominik 1972        |
| <i>Hylastes</i> sp.                         | Curculionidae | Xylophagous                  | <i>Picea</i>       | Pinaceae           | Legrand 1997        |
| <i>Hylobius abietis</i> (L.)                | Curculionidae | Xylophagous                  | <i>Pinus</i>       | Pinaceae           | Dominik 1972        |
| <i>Hylobius piceus</i> (De Geer)            | Curculionidae | Xylophagous                  | Conifers           | Conifers           | Dominik 1972        |
| <i>Hylobius pinastri</i> (Gyll.)            | Curculionidae | Xylophagous                  | <i>Picea</i>       | Pinaceae           | Dominik 1972        |
| <i>Metacynops calabrus</i> Stierlin         | Curculionidae | External chewer              | Polyphagous (a)    | Polyphagous (a)    | Roversi et al. 1993 |
| <i>Otiorhynchus armadillo</i> Rossi         | Curculionidae | External chewer              | Polyphagous (a)    | Polyphagous (a)    | Roversi et al. 1993 |
| <i>Otiorhynchus multipunctatus</i> (F.)     | Curculionidae | External chewer, root feeder | Polyphagous (c, a) | Polyphagous (c, a) | Borowski 1997       |
| <i>Otiorhynchus niger</i> (F.)              | Curculionidae | Root feeder                  | <i>Abies</i>       | <i>Abies</i>       | Legrand 1997        |
| <i>Otiorhynchus singularis</i> (L.)         | Curculionidae | External chewer, root feeder | Polyphagous (c, a) | Polyphagous (c, a) | Borowski 1997       |
| <i>Pissodes piceae</i> Illiger              | Curculionidae | Xylophagous                  | <i>Abies</i>       | <i>Abies</i>       | Legrand 1990        |
| <i>Polydrusus marginatus</i> Stephens       | Curculionidae | External chewer              | Polyphagous (c, a) | Polyphagous (c, a) | Legrand 1997        |
| <i>Strophosoma capitatum</i> De Geer        | Curculionidae | External chewer, root feeder | Pinaceae           | Pinaceae           | Schwenke 1982       |
| <i>Strophosoma melanogrammus</i> (Förster)  | Curculionidae | External chewer, root feeder | Polyphagous (c, a) | Polyphagous (c, a) | Legrand 1990        |
| <i>Lymexylon navale</i> (L.)                | Lymexylonidae | Xylophagous                  | Polyphagous (a)    | Polyphagous (a)    | A. Roques, unpubl.  |
| <i>Hylecoetus dermestoides</i> (L.)         | Lymexylonidae | Xylophagous                  | Polyphagous (a)    | Polyphagous (a)    | Dominik 1972        |
| <i>Melolontha melolontha</i> L.             | Scarabaeidae  | Root feeder                  | Polyphagous (a)    | Polyphagous (a)    | Abgrall 1991        |
| <i>Cryphalus abietis</i> (Ratzeburg)        | Scolytidae    | Xylophagous                  | Pinaceae           | Pinaceae           | Roversi et al. 1993 |
| <i>Cryphalus piceae</i> (Ratzeburg)         | Scolytidae    | Xylophagous                  | <i>Abies</i>       | <i>Abies</i>       | Legrand 1997        |
| <i>Dryocoetes autographus</i> (Ratzeburg)   | Scolytidae    | Xylophagous                  | Pinaceae           | Pinaceae           | Dominik 1972        |
| <i>Gnathotrichus materiarius</i> (Fitch)    | Scolytidae    | Xylophagous                  | Pinaceae           | Pinaceae           | Schwenke 1982       |
| <i>Ips acuminatus</i> Gyllenhal             | Scolytidae    | Xylophagous                  | <i>Pinus</i>       | <i>Pinus</i>       | Legrand 1997        |
| <i>Ips cembrae</i> Heer                     | Scolytidae    | Xylophagous                  | <i>Larix</i>       | Pinaceae           | Stoakley 1975       |
| <i>Ips typographus</i> L.                   | Scolytidae    | Xylophagous                  | <i>Picea</i>       | <i>Picea</i>       | Grüne 1979          |
| <i>Pityogenes bidentatus</i> (Herbst)       | Scolytidae    | Xylophagous                  | <i>Pinus</i>       | Pinaceae           | Schwenke 1982       |
| <i>Pityogenes chalcographus</i> L.          | Scolytidae    | Xylophagous                  | <i>Picea</i>       | <i>Picea</i>       | Schwenke 1982       |
| <i>Pityogenes quadridens</i> Hartig         | Scolytidae    | Xylophagous                  | <i>Abies</i>       | <i>Abies</i>       | Schwenke 1982       |
| <i>Pityokteines curvidens</i> Germar        | Scolytidae    | Xylophagous                  | <i>Abies</i>       | <i>Abies</i>       | Legrand 1997        |
| <i>Pityokteines spinidens</i> Reitter       | Scolytidae    | Xylophagous                  | <i>Abies</i>       | <i>Abies</i>       | Legrand 1997        |
| <i>Pityokteines vorontsovi</i> Jakobson     | Scolytidae    | Xylophagous                  | <i>Abies</i>       | <i>Abies</i>       | Grüne 1979          |
| <i>Pityophthorus carniolicus</i> Wichmann   | Scolytidae    | Xylophagous                  | <i>Pinus</i>       | <i>Pinus</i>       | A. Roques, unpubl.  |
| <i>Pityophthorus pityographus</i> Ratzeburg | Scolytidae    | Xylophagous                  | <i>Picea</i>       | <i>Picea</i>       | Dominik 1972        |
| <i>Trypodendron lineatus</i> Olivier        | Scolytidae    | Xylophagous                  | Pinaceae           | Pinaceae           | Dominik 1972        |
| <i>Xyleborus dispar</i> F.                  | Scolytidae    | Xylophagous                  | Polyphagous (c, a) | Polyphagous (c, a) | Dominik 1972        |
| <i>Xyleborus saxeseni</i> Ratzeburg         | Scolytidae    | Xylophagous                  | Polyphagous (c, a) | Polyphagous (c, a) | Legrand 1997        |
| <b>Diptera</b>                              |               |                              |                    |                    |                     |
| <i>Hapleginella laevifrons</i> (Loew)       | Chloropidae   | Cone feeder                  | Pinaceae           | Pinaceae           | Roques 1983         |
| <b>Hemiptera</b>                            |               |                              |                    |                    |                     |
| <i>Gastrodes abietum</i> Bergroth           | Lygaeidae     | Sap sucker, cone feeder      | Pinaceae           | Pinaceae           | Roques 1983         |
| <i>Kleidocerys resedae</i> (Panzer)         | Lygaeidae     | Sap sucker                   | Polyphagous (a)    | Polyphagous (a)    | Borowski 1997       |
| <b>Homoptera</b>                            |               |                              |                    |                    |                     |
| <i>Haematoloma dorsatum</i> (Ahrens)        | Cercopidae    | Sap sucker                   | Conifers           | Conifers           | Roversi et al. 1993 |
| <i>Lepidosaphes newsteadi</i> (Sulc)        | Diaspididae   | Sap sucker                   | <i>Pinus</i>       | <i>Pinus</i>       | Roversi et al. 1993 |
| <i>Nuculaspis abietis</i> (Schrank)         | Diaspididae   | Sap sucker                   | Pinaceae           | Pinaceae           | Roversi et al. 1993 |
| <b>Hymenoptera</b>                          |               |                              |                    |                    |                     |
| <i>Urocerus augur</i> (Klug)                | Siricidae     | Xylophagous                  | Conifers           | Conifers           |                     |
| <i>Urocerus gigas</i> (L.)                  | Siricidae     | Xylophagous                  | Polyphagous (c, a) | Polyphagous (c, a) | Dominik 1972        |
| <i>Xeris spectrum</i> (L.)                  | Siricidae     | Xylophagous                  | Pinaceae           | Pinaceae           | Roversi et al. 1993 |

**Table A1** (concluded).

| Arthropod species and order                     | Family        | Guild                               | Primary host*      | Host range*        | Reference                           |
|---|---------------|-------------------------------------|--------------------|--------------------|-------------------------------------|
| <b>Lepidoptera</b>                              |               |                                     |                    |                    |                                     |
| <i>Coleophora laricella</i> (Hübner)            | Coleophoridae | External chewer                     | <i>Larix</i>       | <i>Larix</i>       | Borowski 1997                       |
| <i>Alcis repandata</i> (L.)                     | Geometridae   | External chewer                     | Polyphagous (c, a) | Polyphagous (c, a) | Hatcher and Winter 1990             |
| <i>Biston betularia</i> (L.)                    | Geometridae   | External chewer                     | Polyphagous (a)    | Polyphagous (a)    | Borowski 1997                       |
| <i>Bupalus piniaria</i> (L.)                    | Geometridae   | External chewer                     | <i>Pinus</i>       | Pinaceae           | Bevan and Brown 1978                |
| <i>Deileptenia ribeata</i> (Clerck)             | Geometridae   | External chewer                     | Conifers           | Conifers           | Hatcher and Winter 1990             |
| <i>Eupithecia intricata arceuthata</i> (Frey.)  | Geometridae   | External chewer                     | <i>Juniperus</i>   | Conifers           | Hatcher and Winter 1990             |
| <i>Eupithecia lariciata</i> (Freyer)            | Geometridae   | External chewer                     | <i>Larix</i>       | <i>Larix</i>       | Borowski 1997                       |
| <i>Eupithecia pusillata</i> (Den. & Schiff.)    | Geometridae   | External chewer                     | <i>Juniperus</i>   | <i>Juniperus</i>   | Borowski 1997                       |
| <i>Eupithecia tantillaria</i> Boisduval         | Geometridae   | External chewer                     | <i>Picea</i>       | Pinaceae           | Hatcher and Winter 1990             |
| <i>Hylaea fasciaria</i> (L.)                    | Geometridae   | External chewer                     | Pinaceae           | Pinaceae           | Hatcher and Winter 1990             |
| <i>Macaria liturata</i> (Clerck)                | Geometridae   | External chewer                     | Conifers           | Conifers           | Hatcher and Winter 1990             |
| <i>Macaria signaria</i> (Hübner)                | Geometridae   | External chewer                     | <i>Picea</i>       | Pinaceae           | Borowski 1997                       |
| <i>Operophtera brumata</i> (L.)                 | Geometridae   | External chewer                     | Polyphagous (a)    | Polyphagous (a)    | Hatcher and Winter 1990             |
| <i>Thera britannica</i> Turner                  | Geometridae   | External chewer                     | <i>Picea</i>       | Conifers           | Hatcher and Winter 1990             |
| <i>Thera obeliscata</i> (Hübner)                | Geometridae   | External chewer                     | Conifers           | Conifers           | Hatcher and Winter 1990             |
| <i>Thera variata</i> (Den. & Schiff.)           | Geometridae   | External chewer                     | <i>Picea</i>       | Pinaceae           | Roversi et al. 1993                 |
| <i>Dendrolimus pini</i> (L.)                    | Lasiocampidae | External chewer                     | Conifers           | Conifers           | Borowski 1997                       |
| <i>Calliteara pudibunda</i> (L.)                | Lymantriidae  | External chewer                     | Polyphagous (a)    | Polyphagous (a)    | Borowski 1997                       |
| <i>Lymantria dispar</i> (L.)                    | Lymantriidae  | External chewer                     | Polyphagous (a)    | Polyphagous (a)    | Legrand 1997                        |
| <i>Lymantria monacha</i> (L.)                   | Lymantriidae  | External chewer                     | Polyphagous (c, a) | Polyphagous (c, a) | Legrand 1990                        |
| <i>Orgyia antiqua</i> (L.)                      | Lymantriidae  | External chewer                     | Polyphagous (a)    | Polyphagous (a)    | Burzynski 1978                      |
| <i>Agrotis segetum</i> (Den. & Schiff.)         | Noctuidae     | Root feeder                         | Polyphagous (a)    | Polyphagous (a)    | Borowski 1997                       |
| <i>Panolis flammea</i> (Den. & Schiff.)         | Noctuidae     | External chewer                     | <i>Pinus</i>       | <i>Pinus</i>       | Borowski 1997                       |
| <i>Thaumetopoea pityocampa</i> (Den. & Schiff.) | Notodontidae  | External chewer                     | <i>Pinus</i>       | <i>Pinus</i>       | Roversi et al. 1993                 |
| <i>Cateremna terebrella</i> (Zinck)             | Pyalidae      | Cone feeder                         | <i>Picea</i>       | <i>Picea</i>       | Roques 1983                         |
| <i>Dioryctria abietella</i> (Den. & Schiff.)    | Pyalidae      | Cone feeder                         | Pinaceae           | Pinaceae           | Roques 1983                         |
| <i>Dioryctria simplicella</i> Heinemann         | Pyalidae      | Cone feeder, bud borer, xylophagous | <i>Pinus</i>       | <i>Pinus</i>       | Roques 1983                         |
| <i>Hyloicus pinastri</i> (L.)                   | Sphingidae    | External chewer                     | Pinaceae           | Pinaceae           | Roversi et al. 1993                 |
| <i>Choristoneura murinana</i> (Hübner)          | Tortricidae   | External chewer                     | <i>Abies</i>       | <i>Abies</i>       | Du Merle et al. 1992                |
| <i>Ditula angustiorana</i> (Haworth)            | Tortricidae   | External chewer                     | Polyphagous (c, a) | Polyphagous (c, a) | Roversi et al. 1993                 |
| <i>Epinotia fraternata</i> (Haworth)            | Tortricidae   | Buds borers                         | <i>Abies</i>       | <i>Abies</i>       | Roversi et al. 1993                 |
| <i>Epinotia tedella</i> (Clerck)                | Tortricidae   | External chewer                     | <i>Picea</i>       | <i>Picea</i>       | Borowski 1997                       |
| <i>Ptycholoma lecheana</i> (L.)                 | Tortricidae   | Cone feeder                         | Polyphagous (a)    | Polyphagous (a)    | A. Roques, unpubl.                  |
| <i>Arghyrestia glabrata</i> (Zeller)            | Yponomeutidae | External chewer                     | <i>Picea</i>       | <i>Picea</i>       | Borowski 1997                       |
| <b>Orthoptera</b>                               |               |                                     |                    |                    |                                     |
| <i>Tetrix bipunctata</i> (L.)                   | Tetrigidae    | External chewer                     | Polyphagous (a)    | Polyphagous (a)    | Borowski 1997                       |
| <b>Exotic species introduced in Europe</b>      |               |                                     |                    |                    |                                     |
| <i>Oligonychus ununguis</i> (Jacobi)            | Tetranychidae | Sap sucker                          |                    |                    | Borowski 1997                       |
| <i>Gilletteella cooleyi</i> (Gilette)           | Adelgidae     | Sap sucker                          |                    |                    | Dominik 1972                        |
| <i>Elatobium abietinum</i> (Walker)             | Aphididae     | Sap sucker                          |                    |                    | Szelegiewicz 1975                   |
| <i>Buprestis aurulenta</i> L.                   | Buprestidae   | Xylophagous                         |                    |                    | Dominik 1980                        |
| <i>Leptoglossus occidentalis</i> Heidemann      | Coreidae      | Cone feeder                         |                    |                    | Bernardinelli and Zandigiacomo 2001 |
| <i>Xylosandrus germanus</i> Blandford           | Scolytidae    | Xylophagous                         |                    |                    | Legrand 1997                        |
| <i>Megastigmus spermotrophus</i> Wachtl         | Torymidae     | Cone feeder                         |                    |                    | Roques 1983                         |

\*a, angiosperms; c, conifers.

**Table A2.** List of the arthropod species having colonized exotic Cupressaceae introduced in Europe, with their host range.

| Arthropod species                       | Family        | Guild                    | Host range            | Reference                      |
|---|---------------|--------------------------|-----------------------|--------------------------------|
| <b><i>Chamaecyparis</i> spp.</b>        |               |                          |                       |                                |
| <i>Cinara cupressi</i> (Buckton)        | Aphididae     | Sap sucker               | Cupressaceae          | Winter 1989                    |
| <i>Palmar festiva</i> (L.)              | Buprestidae   | Xylophagous              | <i>Juniperus</i>      | Hellrig 1978                   |
| <i>Hylotrupes bajulus</i> (L.)          | Cerambycidae  | Xylophagous              | Conifers              | Dominik 1972                   |
| <i>Planococcus vovae</i> (Nassonov)     | Coccidae      | Sap sucker               | <i>Juniperus</i>      | Golan and Jaskiewicz 2002      |
| <i>Hylobius abietis</i> L.              | Curculionidae | Root feeder              | Conifers              | Dominik 1972                   |
| <i>Carulaspis minima</i> Targioni       | Diaspididae   | Sap sucker               | Cupressaceae          | Ülgentürk et al. 2004          |
| <i>Diaspis visci</i> (Schränk)          | Diaspididae   | Sap sucker               | Conifers              | Hrubik 1973                    |
| <i>Orsillus depressus</i> Muls & Rey    | Lygaeidae     | Cone feeder              | Cupressaceae          | Rouault 2002                   |
| <i>Orsillus maculatus</i> Fieber        | Lygaeidae     | Cone feeder              | Cupressaceae          | Rouault 2002                   |
| <i>Cryphalus abietis</i> Ratzeburg      | Scolytidae    | Xylophagous              | <i>Picea</i>          | Schwenke 1982                  |
| <i>Phloeosinus thujae</i> (Perris)      | Scolytidae    | Xylophagous, shoot borer | Cupressaceae          | Hrubik 1973                    |
| <i>Urocerus gigas gigas</i> (L.)        | Siricidae     | Xylophagous              | Conifers              | Viitasaari 1984                |
| <i>Xeris spectrum spectrum</i> (L.)     | Siricidae     | Xylophagous              | Conifers              | Viitasaari 1984                |
| <i>Pseudococcyx tessulatana</i> (Stgr.) | Tortricidae   | Cone feeder              | Cupressaceae          | Hrubik 1973                    |
| <i>Argyresthia dilectella</i> Zeller    | Yponomeutidae | External chewer          | <i>Juniperus</i>      | Maitland Emmet et al. 1996     |
| <i>Argyresthia trifasciata</i> Stgr.    | Yponomeutidae | External chewer          | <i>Juniperus</i>      | Gomboc 2003                    |
| <i>Argyresthia thuiella</i> Packard*    | Yponomeutidae | Leafminer                | Cupressaceae          | van Frankenhuizen 1974         |
| <i>Janeetiella siskyi</i> Felt*         | Cecidomyiidae | Cone feeder              | <i>Chamaecyparis</i>  | De Meijere 1935                |
| <b><i>Cryptomeria japonica</i></b>      |               |                          |                       |                                |
| <i>Hylobius abietis</i> L.              | Curculionidae | Root feeder              | Conifers              | Dominik 1972                   |
| <i>Hylotrupes bajulus</i> (L.)          | Cerambycidae  | Xylophagous              | Conifers              | Dominik 1972                   |
| <b><i>Thuja</i> spp.</b>                |               |                          |                       |                                |
| <i>Cinara cupressi</i> (Buckton)        | Aphididae     | Sap sucker               | Cupressaceae          | Winter 1989                    |
| <i>Cinara thujafilina</i> (Del Guercio) | Aphididae     | Sap sucker               | Cupressaceae          | Binazzi 1978                   |
| <i>Acmaeodera bipunctata</i> (Olivier)  | Buprestidae   | Xylophagous              | <i>Pinus</i>          | Hellrig 1978                   |
| <i>Palmar festiva</i> (L.)              | Buprestidae   | Xylophagous              | <i>Juniperus</i>      | Hellrig 1978                   |
| <i>Hylotrupes bajulus</i> (L.)          | Cerambycidae  | Xylophagous              | Conifers              | Dominik 1972                   |
| <i>Leptura rubra</i> (L.)               | Cerambycidae  | Xylophagous              | Conifers              | Dominik 1972                   |
| <i>Phymatodes glabratus</i> (Charp.)    | Cerambycidae  | Xylophagous              | Cupressaceae          | Schwenke 1982                  |
| <i>Lineaspis striata</i> (Newstead)     | Coccidae      | Sap sucker               | Cupressaceae          | Ülgentürk et al. 2004          |
| <i>Parthenolecanium fletcheri</i>       | Coccidae      | Sap sucker               | Conifers, angiosperms | Golan 2003                     |
| <i>Planococcus vovae</i> (Nassonov)     | Coccidae      | Sap sucker               | Cupressaceae          | Golan and Jaskiewicz 2002      |
| <i>Cossus</i> sp.                       | Cossidae      | Xylophagous              | Conifers              | Dominik 1972                   |
| <i>Hylobius</i> sp.                     | Curculionidae | Root feeder              | Conifers              | Dominik 1972                   |
| <i>Otiorhynchus ovatus</i> (L.)         | Curculionidae | External chewer          | Conifers              | Schwenke 1982                  |
| <i>Otiorhynchus singularis</i> (L.)     | Curculionidae | Xylophagous, shoot borer | Conifers, angiosperms | Schwenke 1982                  |
| <i>Otiorhynchus sulcatus</i> (F.)       | Curculionidae | Root feeder              | Conifers              | van Tol et al. 2001            |
| <i>Carulaspis carueli</i> (Signoret)    | Diaspididae   | Sap sucker               | Cupressaceae          | Ülgentürk et al. 2004          |
| <i>Carulaspis minima</i> Targioni       | Diaspididae   | Sap sucker               | Cupressaceae          | Ülgentürk and Çanakcioğlu 2004 |
| <i>Diaspis visci</i> (Schränk)          | Diaspididae   | Sap sucker               | Conifers              | Hrubik 1973                    |
| <i>Pachypasa otus</i> (Drury)           | Lasiocampidae | External chewer          | Cupressaceae          | de Freina and Witt 1987        |
| <i>Pachypasa limosa</i> (Serres)        | Lasiocampidae | External chewer          | Cupressaceae          | de Freina and Witt 1987        |
| <i>Calopus serraticornis</i> L.         | Oedemeridae   | Xylophagous              | Conifers              | Dominik 1972                   |
| <i>Cryphalus piceae</i> (Ratzeburg)     | Scolytidae    | Xylophagous              | Conifers              | Schwenke 1982                  |
| <i>Phloeosinus aubei</i> Perris         | Scolytidae    | Xylophagous, shoot borer | Cupressaceae          | Schwenke 1982                  |
| <i>Phloeosinus rudis</i> Blandford      | Scolytidae    | Xylophagous, shoot borer | Cupressaceae          | Schwenke 1982                  |
| <i>Phloeosinus thujae</i> (Perris)      | Scolytidae    | Xylophagous, shoot borer | Cupressaceae          | Hrubik 1973                    |
| <i>Xyleborus dispar</i> F.              | Scolytidae    | Xylophagous              | Conifers, angiosperms | Schwenke 1982                  |
| <i>Xyleborus saxeseni</i> (Ratzeburg)   | Scolytidae    | Xylophagous              | Conifers              | Dominik 1972                   |
| <i>Argyresthia trifasciata</i> Stgr.    | Yponomeutidae | Leafminer                | Cupressaceae          | Gomboc 2003                    |
| <i>Argyresthia thuiella</i> Packard*    | Yponomeutidae | Leafminer                | Cupressaceae          | van Frankenhuizen 1974         |

\*Exotic arthropod species introduced in Europe.