

RESEARCH

Open Access



Clinical outcomes and prognostic factors in bloodstream infections due to extended-spectrum β -lactamase-producing Enterobacteriaceae among patients with malignancy: a meta-analysis

Ai-Min Jiang^{1†}, Na Liu^{1†}, Rui Zhao², Hao-Ran Zheng¹, Xue Chen¹, Chao-Xin Fan¹, Rui Zhang¹, Xiao-Qiang Zheng¹, Xiao Fu¹, Yu Yao^{1*} and Tao Tian^{1*}

Abstract

Background: The colonization of Extended-spectrum β -lactamase-producing Enterobacteriaceae (ESBL-PE) in bloodstream infections (BSIs) has been increased dramatically worldwide, and it was associated with worse clinical outcomes in patients with malignancy. We performed the meta-analysis to investigate the prognosis and risk factors in BSIs caused by ESBL-PE in oncological patients.

Methods: PubMed, EMBASE, and Cochrane Library were searched for related studies. All-cause mortality was considered as the primary outcome. Subgroup analyses, meta-regression analyses, and sensitivity analysis were used to investigate heterogeneity and reliability in results.

Results: 6,729 patients from 25 studies were eligible. Six studies enrolled oncological patients with BSIs caused by ESBL-PE only, while 19 studies both enrolled ESBL-PE and non-ESBL-PE infections. The results showed that BSIs caused by ESBL-PE in patients with malignancy was associated with higher mortality than non-ESBL-PE infections (RR = 2.21, 95% CI: 1.60–3.06, $P < 0.001$), with a significant between-study heterogeneity ($I^2 = 78.3\%$, $P < 0.001$). Subgroup analyses showed that children (RR = 2.80, 95% CI: 2.29–3.43, $P < 0.001$) and hematological malignancy (RR = 3.20, 95% CI: 2.54–4.03, $P < 0.001$) were associated with a higher mortality. Severe sepsis/ septic shock, pneumonia, and ICU admission were the most common predictors of mortality.

Conclusions: Our study identified that BSIs caused by ESBL-PE in patients with malignancy were associated with worse clinical outcomes compared with non-ESBL-PE infections. Furthermore, children and hematological malignancy were associated with higher mortality. Severe sepsis/ septic shock, pneumonia, and ICU admission were the most common predictors of mortality.

Keywords: Bloodstream infection, Extended-spectrum β -lactamase, ESBL-PE, Malignancy, Mortality, Meta-analysis

Background

In recent years, the incidence of bloodstream infections (BSIs) caused by Extended-spectrum β -lactamase-producing Enterobacteriaceae (ESBL-PE) has been increasing over time all over the world

*Correspondence: 13572101611@163.com; tiantao0607@163.com

[†]Ai-Min Jiang and Na Liu contributed equally to this work.

¹ Department of Medical Oncology, The First Affiliated Hospital of Xi'an Jiaotong University, Xi'an, Shaanxi 710061, People's Republic of China
Full list of author information is available at the end of the article



© The Author(s) 2020. This article is licensed under a Creative Commons Attribution 4.0 International License, which permits use, sharing, adaptation, distribution and reproduction in any medium or format, as long as you give appropriate credit to the original author(s) and the source, provide a link to the Creative Commons licence, and indicate if changes were made. The images or other third party material in this article are included in the article's Creative Commons licence, unless indicated otherwise in a credit line to the material. If material is not included in the article's Creative Commons licence and your intended use is not permitted by statutory regulation or exceeds the permitted use, you will need to obtain permission directly from the copyright holder. To view a copy of this licence, visit <http://creativecommons.org/licenses/by/4.0/>. The Creative Commons Public Domain Dedication waiver (<http://creativecommons.org/publicdomain/zero/1.0/>) applies to the data made available in this article, unless otherwise stated in a credit line to the data.

[1]. There is a growing body of evidence to show that BSIs caused by ESBL-PE are more worrisome in clinical practice. Extended-spectrum β -lactamases (ESBLs) mediates resistance to a wide variety of antibiotics, including third-generation cephalosporins, aminoglycosides, and quinolones. Furthermore, most of empirical antimicrobial regimens can not cover these pathogens [2, 3]. Therefore, the antimicrobial therapeutic regimens are often limited in these infections [1].

Patients with malignancy are more vulnerable to developing severe infection, including those caused by ESBL-PE since they are more likely to be immunocompromised due to chemotherapy, radiotherapy, surgery, invasive procedures, malnutrition, and malignancy itself [4, 5]. As a result, these infections have become significant therapeutic challenges for clinicians due to delayed initiation of chemotherapy, reduced standard dosage, prolonged hospitalization, increased financial burden on healthcare, and raised severe morbidity and mortality [3, 6]. Therefore, rapid initiation of appropriate antibiotic therapy is pivotal for oncological patients with BSIs caused by ESBL-PE, [4] while inappropriate empirical antibiotic treatment is associated with worse outcomes and survival [3].

Previous meta-analyses have investigated the prevalence of BSIs caused by ESBL-PE in patients with malignancy [7, 8]. However, there was no further analysis of clinical outcomes and risk factors in these populations. Therefore, we conducted this study to assess the prognosis and risk factors of BSIs due to ESBL-PE in patients with malignancy and provide updated evidence via meta-analysis.

Methods

Search strategy

Our meta-analysis was based on the Preferred Reporting Items for Systematic Reviews and Meta-Analyses (PRISMA) guidelines [9]. We conducted an overall literature retrieval for PubMed, EMBASE, and Cochrane Library published up to 10 December 2019. Both MeSH terms and free words were used to search for title/ abstract. Our search terms were: "(ESBL OR (extended-spectrum beta-lactamase) OR (extended-spectrum β -lactamase)) AND (tumor OR neoplasia OR malignancy OR cancer OR carcinoma OR sarcoma OR leukemia OR leukaemia OR lymphoma OR hematolog* OR haematolog* OR oncolog*)". We manually screened other relevant studies and reference lists. The search was performed independently by two investigators (AM Jiang and N Liu).

Study selection

Studies were considered as eligible based on the following criteria: [1] population: patients with solid or hematological malignancies; [2] intervention (exposure): BSIs caused by ESBL-PE; [3] comparison: BSIs caused by non-ESBL-PE; [4] outcome: the mortality of BSIs. Literature that satisfied the following criteria were excluded: [1] letters, case reports, editorials, expert opinion or reviews without original data; [2] overlapping or duplicate data; [3] incomplete data about outcomes; [4] not English literatures; [5] the sample size of BSIs caused by ESBL-PE in oncological patients less than 10; [6] studies only focusing on risk factors for ESBL-PE infections.

Data extraction and quality assessment

Two investigators (AM Jiang and N Liu) independently extracted the data using a standardized approach. Any disagreement in the study selection and data extraction phases was resolved through discussion with the third investigator (R Zhao). The following data information was retrieved from each article: first author's name, year of publication, country, study population, infection type of BSIs, the total number of screened subjects, the total number of ESBL-PE caused BSIs, the total number of BSIs caused death and ESBL-PE BSIs caused death, and ESBL detection method. The data was extracted from texts or tables in articles. Newcastle Ottawa Quality Assessment Scale (NOS) was used in our research to assess the quality of selected studies [10]. The scale included three aspects: selection, comparability, and outcome. Studies that scored more than five were considered of high quality.

Definitions and study outcomes

Neutropenia was defined as an absolute neutrophil count of < 500 neutrophils/ mm^3 [11].

Empirical antibiotics treatment was considered inappropriate once the antibiotics could not suppress the activity of the isolated pathogens according to the results of antimicrobial susceptibility tests during the first 24 h after the blood culture was obtained [11].

The all-cause mortality at the end of the study and the predictors in BSIs due to ESBL-PE in patients with malignancy were the primary outcomes in the study [12].

Statistical analysis

The RRs and 95% CIs for mortality were calculated to assess the outcomes of BSIs caused by ESBL-PE in oncological patients. All results were depicted as forest plots. Heterogeneity was assessed using Cochran's Q test and the I^2 statistic test. When the heterogeneity was statistically significant ($P < 0.05$ and $I^2 > 50\%$), a random-effects

model was applied to obtain the pooled RRs; otherwise, a fixed-effects model was performed. Subgroup analyses and meta-regression analyses were conducted to explore the sources of heterogeneity. We also performed a sensitivity analysis to evaluate the quality and stability of results by omitting one study in each turn. Begg’s test and Egger’s test were used to assess the publication bias. Statistical tests were two-tailed at the significance level of $P < 0.05$. All analyses were used with STATA V.14.0 (Stata Corporation, College Station, TX).

Results

Study characteristics and quality assessment

Our literature search identified 1,260 studies. After excluding repeated records and the initial screening

based on titles and abstracts, 25 articles were eligible in this study. Of these, six studies enrolled oncological patients with BSIs caused by ESBL-PE only, while 19 studies both enrolled ESBL-PE and non-ESBL-PE infections. Of the 25 studies, there were eight prospective cohort studies, 14 retrospective cohort studies, and three case–control studies. All included studies were published between 2009 and 2019, and there were six studies published in 2019, accounting for 24%. There were 15 studies conducted in Asia, seven studies conducted in Europe, and three studies were conducted in North America. The detailed flow chart of the study selection process was described in Fig. 1. Table 1 summarized the characteristics of 25 selected studies. The majority of the included studies had a NOS score of more than 5 points, and 21

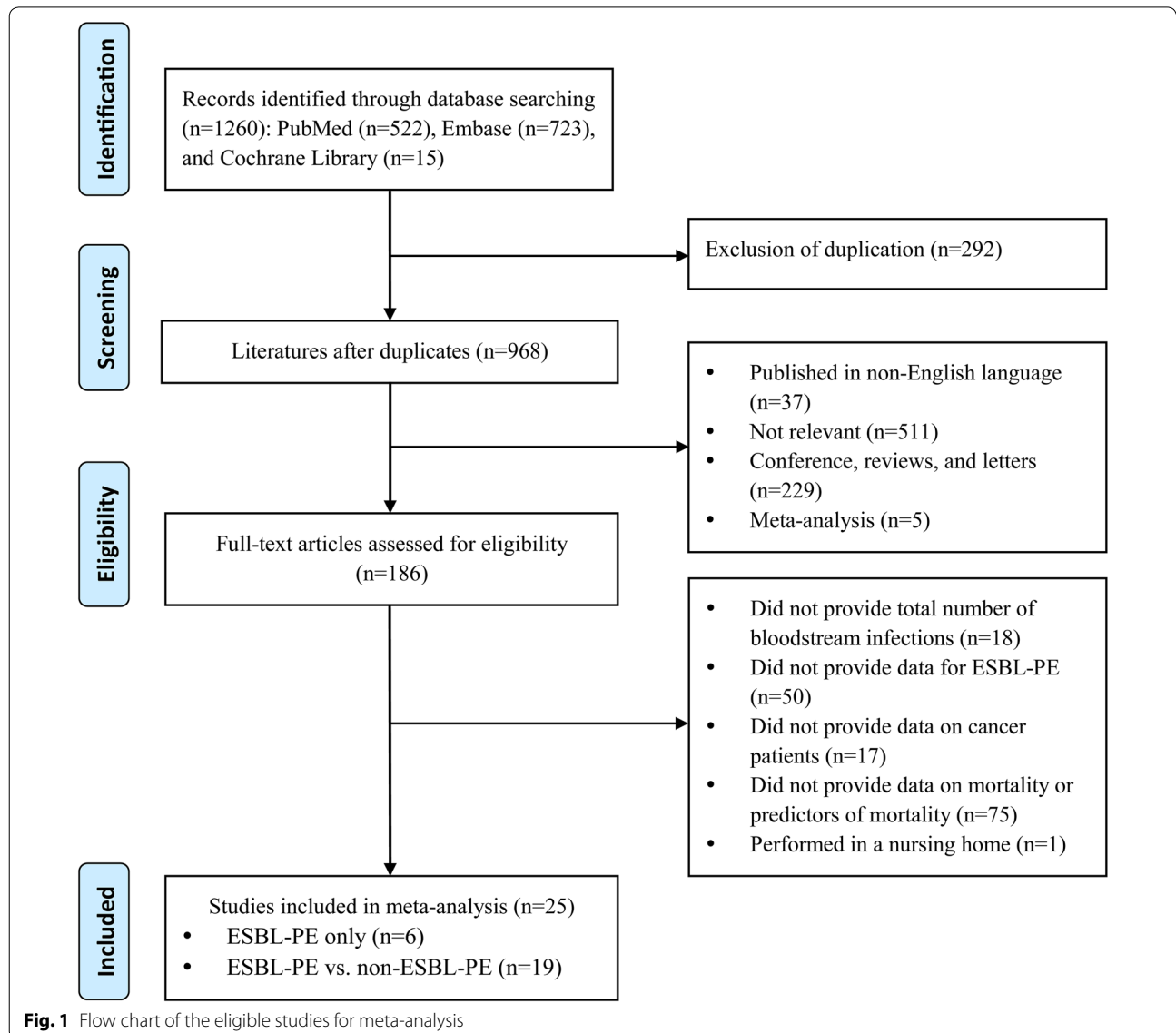


Table 1 Characteristics of the studies and their populations included in the review

First author	Design	Year	Country	Population	Infection type— bacteria	No. of screened	No. of ESBL-PE BSIs (%)	No. of BSIs caused death	No. of ESBL-PE BSIs caused death (%)	ESBL detection method
ESBL-PE only										
Wang [31]	MC retrospective cohort	2011	Taiwan, China	Adults with solid or hematological malignancy	<i>E. coli</i> and <i>Klebsiella</i>	351	113 (32.2%)	35	35 (31.0%)	MicroScan
Wu [15]	SC prospective cohort	2012	Taiwan, China	Adults with solid or hematological malignancy	<i>E. coli</i>	97	39 (40.2%)	10	10 (25.6%)	Disk diffusion
Kang [17]	MC retrospective cohort	2013	Korea	Adults with solid malignancy	<i>E. coli</i>	92	36 (39.1%)	6	6 (16.7%)	Microdilution or disk diffusion
Gudiol [29]	MC retrospective cohort	2017	Spain	Adults with acute leukemia and neutropenia	<i>E. coli</i> , <i>Klebsiella</i> , and <i>Enterobacter cloacae</i>	NR	425	65	65 (15.3%)	Disk diffusion
Cattaneo [23]	MC prospective cohort	2018	Germany	Adults with hematological malignancy	<i>E. coli</i> , <i>Klebsiella</i> , and other <i>Enterobacter spp</i>	137	61 (44.5%)	10	10 (16.4%)	Microdilution
Benanti [32]	SC retrospective cohort	2019	USA	Adults with hematological malignancy	<i>E. coli</i>	NR	103	11	11 (10.7%)	NR
ESBL-PE and non-ESBL-PE										
Trecarichi [13]	SC retrospective cohort	2009	Italy	Adults and children with hematological malignancy	<i>E. coli</i>	107	26 (24.3%)	13	11 (42.3%)	Disk diffusion
Gudiol [27]	SC prospective cohort	2010	Spain	Adults and children with solid or hematological malignancy	<i>E. coli</i>	531	17 (3.2%)	29	6 (35.3%)	MicroScan
Cornejo-Juarez [40]	Case-control study	2012	Mexico	Adults and children with hematological malignancy	<i>E. coli</i>	670	100 (14.9%)	102	51 (51%)	MicroScan
Kang [14]	MC retrospective cohort	2012	Korea	Adults with hematological malignancy	<i>E. coli</i> and <i>Klebsiella</i>	142	29 (20.4%)	29	13 (44.8%)	Microdilution or disk diffusion
Ha [16]	SC retrospective cohort	2013	Korea	Adults with solid or hematological malignancy	<i>E. coli</i>	350	95 (27.1%)	52	21 (22.1%)	Disk diffusion

Table 1 (continued)

First author	Design	Year	Country	Population	Infection type— bacteria	No. of screened	No. of ESBL-PE BSIs (%)	No. of BSIs caused death	No. of ESBL-PE BSIs caused death (%)	ESBL detection method
Kim [18]	SC retrospective cohort	2013	Korea	Adults with hematological malignancy and FN	<i>E. coli</i> and Klebsiella	96	23 (24.0%)	8	4 (17.4%)	MicroScan
Meran [34]	SC retrospective cohort	2013	Turkey	Adults and children with hematological malignancy	<i>E. coli</i> , Klebsiella, and <i>Enterobacter cloacae</i>	154	40 (26.0%)	30	5 (12.5%)	NR
Bodro [19]	SC prospective cohort	2014	Spain	Adults with solid or hematological malignancy	Klebsiella and other <i>Enterobacter spp</i>	392	19 (4.8%)	18	4 (21.1%)	Disk diffusion
Kim [28]	SC prospective cohort	2014	Korea	Adults and children with solid or hematological malignancy	<i>Enterobacter spp</i>	203	31 (15.3%)	34	6 (19.4%)	Disk diffusion
Han [20]	SC retrospective cohort	2015	Korea	Children with solid or hematological malignancy and FN	<i>E. coli</i> and Klebsiella	59	21 (35.6%)	3	1 (4.8%)	VITEK®2 automated system
Cattaneo [21]	MC prospective cohort	2016	Italy	Adults with acute leukaemia	<i>Enterobacter spp</i>	433	36 (8.3%)	37	5 (13.9%)	Microdilution or disk diffusion
Ma [22]	SC retrospective cohort	2017	China	Adults with hematological malignancy	<i>E. coli</i>	168	97 (57.7%)	21	15 (15.5%)	Disk diffusion
Çeken [24]	SC retrospective cohort	2018	Turkey	Adults with solid or hematological malignancy	<i>E. coli</i> and Klebsiella	122	70 (57.4%)	31	23 (32.9%)	VITEK®2 automated system
Islas-Muñoz [25]	SC prospective cohort	2018	Mexico	Adults with solid or hematological malignancy	<i>E. coli</i> , Klebsiella, and <i>Enterobacter spp</i>	496	123 (24.8%)	89	37 (30.1%)	Disk diffusion
Ben-Chetrit [42]	SC retrospective cohort	2019	Israel	Adults with solid or hematological malignancy	<i>E. coli</i> and Klebsiella	88	26 (19.5%)	17	6 (7.5%)	NR
Isendahl [26]	Case-control study	2019	Sweden	Adults and children with solid or hematological malignancy	<i>E. coli</i> and Klebsiella	945	238 (25.2%)	107	45 (18.9%)	NR

Table 1 (continued)

First author	Design	Year	Country	Population	Infection type— bacteria	No. of screened BSIs (%)	No. of ESBL-PE BSIs (%)	No. of BSIs caused death	No. of ESBL-PE BSIs caused death (%)	ESBL detection method
Kim [35]	SC prospective cohort	2019	Korea	Adults with solid or hematologi- cal malignancy and FN	<i>E. coli</i> and <i>Kleb- siella</i>	179	23 (12.8%)	51	8 (34.8%)	MicroScan
Namikawa [30]	Case-control study	2019	Japan	Adults with solid or hematologi- cal malignancy	<i>E. coli</i> , <i>Klebsiella</i> , and <i>Enterobacter spp</i>	65	42 (64.6%)	13	9 (21.4%)	NR
Zhang [33]	SC retrospective cohort	2019	China	Adults with solid or hematologi- cal malignancy	<i>E. coli</i>	324	160 (49.3%)	71	39 (24.4%)	VITEK®2 automated system

ESBL-PE extended-spectrum β-lactamase-producing Enterobacteriaceae, BS bloodstream infection, SC single-center, MC multicenter, NR not reported, FN febrile neutropenia

studies included in this article were high-quality studies. Additional file 1: Table S1 presented the results of the quality assessment.

Mortality

In all the studies, the time of death records was not similar. The majority of studies used 30-day mortality to evaluate the clinical outcomes of BSIs caused by ESBL-PE in patients with malignancy, [13–29] only one study did not report a particular time of death [30]. In studies that only enrolled oncological patients with ESBL-PE infections, the mortality of BSIs varied from 10.7 to 31.0%. However, the mortality of BSIs varied from 4.8 to 51.0% in studies that both enrolled ESBL-PE and non-ESBL-PE infections oncological patients, respectively. We finally included 19 studies that enrolled both ESBL-PE and non-ESBL-PE infected oncological patients into analyses to estimate the mortality of BSIs caused by ESBL-PE in patients with malignancy. The results showed that in patients with malignancy, ESBL-PE infections were associated with a higher mortality risk from BSIs than non-ESBL-PE infections (RR=2.21, 95% CI: 1.60–3.06, $P<0.001$) (Fig. 2), with a significant between-study heterogeneity ($I^2=78.3\%$, $P<0.001$).

Subgroup analyses and meta-regression analyses

Subgroup analyses in all selected studies were conducted by study design, region, study population, malignancy type, FN, ESBL detection methods, and NOS score. Most of the subgroups (study design, region, study population, malignancy type, and ESBL detection methods) were consistent with the overall trend and showed statistically significant increases, except for the subgroup without FN, and the subgroup with NOS score < 6. The subgroup analyses suggested that study region was identified as potential sources of the heterogeneity (test for subgroup difference: $P=0.014$), and the RR of mortality in studies from Asia (RR=1.49, 95% CI: 1.22–1.82) was lower compared with Europe and North America, with no evidence of heterogeneity ($I^2=27.3\%$, $P=0.177$). The detailed information was in Table 2 and Additional file 1: Figure S1.

Sensitivity analysis and publication bias

We then carried out the sensitivity analysis by omitting each study in turn. As summarized in Additional file 1: Figure S2, the pooled RRs and 95% CIs of mortality ranged from 2.03 (1.53–2.68) to 2.36 (1.72–3.25). The results of the sensitivity analysis show that our results are stable and reliable since there were no individual studies influenced the overall results. Begg's test and Egger's test showed no evidence of publication bias ($P=0.944$ for

Begg's test; $P=0.538$ for Egger's test, respectively) (Additional file 1: Figure S3).

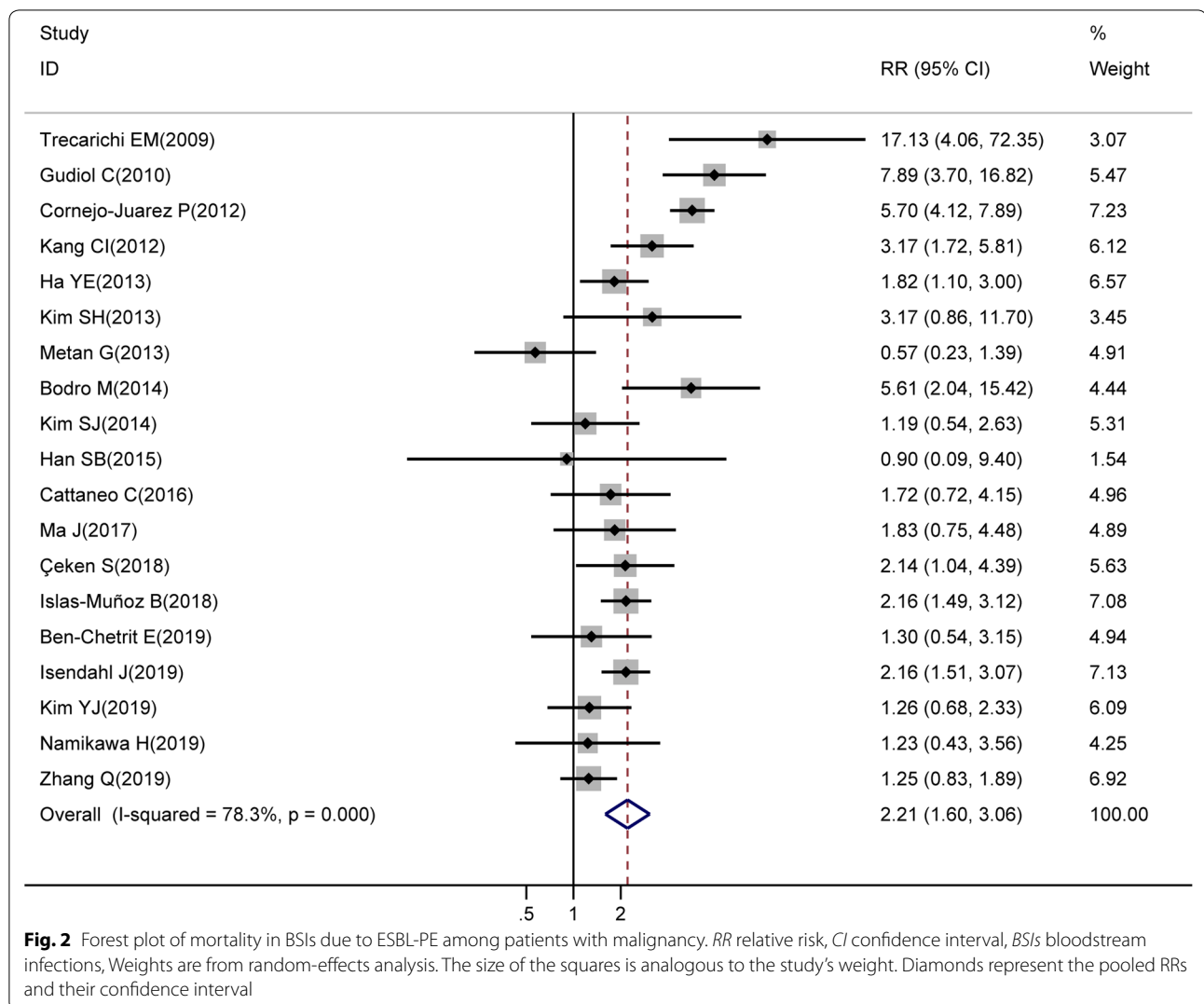
Predictors of mortality in BSIs caused by ESBL-PE among patients with malignancy

We then summarized the risk factors for BSIs caused by ESBL-PE in patients with malignancy. It showed that the most commonly studied risk factors for BSIs caused by ESBL-PE in patients with malignancy were age, gender, ESBL production, neutropenia, inadequate initial antimicrobial treatment, ICU admission, intra-abdominal infection, pneumonia, Pitt bacteremia score, severe sepsis/septic shock, solid tumor, and concurrent corticosteroid therapy. However, metastasis and mechanical ventilation were the least studied variables. We also found that the most common independent risk factors of mortality were severe sepsis/septic shock, pneumonia, ICU admission, and neutropenia. At the same time, indwelling urinary catheter, [23] pneumonia, [31] Pitt bacteremia score, [32] and severe sepsis/septic shock [31] were the most common independent risk factors of mortality in studies that only enrolled patients with BSIs caused by ESBL-PE. In studies that both included ESBL-PE and non-ESBL-PE infections, severe sepsis/septic shock, [14, 16, 18, 19, 22, 24, 28, 33] ICU admission, [14, 19, 27, 33, 34] neutropenia, [13, 14, 24, 35] and pneumonia [14, 16, 21, 28] were the most commonly investigated independent risk factors, respectively. Interestingly, there were only three studies [13, 14, 16] identified that ESBL production was associated with unfavorable outcomes in these patients. The detailed information was in Table 3.

Discussion

Over the past ten years, the colonization and prevalence of ESBL-PE infections have continued to increase rapidly all over the world, [36] and these infections generally associated with worse clinical outcomes, prolonged hospitalization, extra healthcare burden, and delayed initiation of treatment for malignancy [3]. Patients with malignancy are more easily to develop BSIs caused by ESBL-PE since oncological patients are easily immunocompromised due to a series of mechanisms as mentioned before [5]. Therefore, timely and appropriate empirical antimicrobial therapeutic regimen is pivotal for patients with malignancy who developed BSIs caused by ESBL-PE [5].

In this meta-analysis, we included 19 studies that both enrolled oncological patients with ESBL-PE and non-ESBL-PE infections, and the results showed that the mortality in BSIs caused by ESBL-PE among patients with malignancy was higher compared with non-ESBL-PE infections (RR=2.21, 95% CI: 1.60–3.06, $P<0.001$). Consistent with our findings, Trearichi EM et al.



reported that ESBL-PE caused BSIs in patients with malignancy was associated with high mortality compared with non-ESBL-PE infections [13, 14, 16]. This result suggests that we should think highly of BSIs caused by ESBL-PE in patients with malignancy during hospitalization, and the rapid initiation of antibiotics treatment should be considered as early as possible once it was recognized.

The results of the subgroup analyses showed that the mortality of ESBL-PE BSIs varies from different regions. We found that the mortality in North America and Europe was higher than in Asia. It could be explained by the fact that the majority of studies were conducted in Asia, and the study region was confirmed as a source of heterogeneity after further meta-regression analyses. Alevizakos M et al. reported that ESBL-PE are the causative agents of approximately 10.0% BSIs among patients with malignancy in Southeast Asia, and it has been associated with increased mortality in these subjects

compared with Europe and America [37]. Therefore, more relevant studies need to be included in the future to draw a more reliable conclusion. We also found that children and hematological malignancy were also associated with worse prognosis in BSIs caused by ESBL-PE. It may be attributed to the fact that the included children population were mainly diagnosed with hematological malignancies, which were more vulnerable to develop immunosuppression, prolonged neutropenia, and septic shock [38, 39]. Interestingly, we observed that FN was not associated with higher mortality in oncological patients with BSIs caused by ESBL-PE. This can be explained by the fact that only three studies included patients with FN. Besides, some studies only enrolled a subset of FN patients, but the data were not accessible to analyze [13, 14, 16, 21, 24, 25, 30, 34, 40]. Among these studies, Kang CI et al. reported that FN/ neutropenia was not the risk factor for mortality in BSIs caused

Table 2 Subgroup analysis for meta-analysis of mortality

Variables	No	RR (95% CI)	I ²	p ^a	p ^b	
Design	Retrospective cohort	10	1.72 (1.38–2.14)	62.2%	0.005	0.395
	Prospective cohort	6	2.02 (1.57–2.60)	75.7%	0.001	
	Case–control study	3	3.11(2.47–3.92)	90.2%	<0.001	
Region	Europe	5	2.79(2.10–3.69)	78.2%	0.001	0.014
	Asia	12	1.49(1.22–1.82)	27.3%	0.177	
	North America	2	3.47 (2.73–4.41)	93.5%	<0.001	
Population	Adults and children	7	2.80 (2.29–3.43)	88.3%	<0.001	0.303
	Adults	12	1.80 (1.50–2.15)	28.4%	0.167	
Malignancy type	Hematological	7	3.20 (2.54–4.03)	83.0%	<0.001	0.355
	Solid or hematological	12	1.81 (1.54–2.14)	60.9%	0.003	
FN	Yes	3	1.48 (0.87–2.53)	0.0%	0.418	0.530
	No	16	2.21 (1.92–2.54)	80.8%	<0.001	
ESBL detection methods	Disk diffusion	6	2.21 (1.72–2.83)	64.6%	0.015	0.554
	MicroScan	4	3.99 (3.10–5.15)	85.9%	<0.001	
NOS	<6	2	0.76 (0.39–1.49)	16.5%	0.274	0.065
	≥6	17	2.30 (2.00–2.64)	77.3%	<0.001	

RR relative risk, CI confidence interval, FN febrile neutropenia, ESBL extended-spectrum β-lactamase; NOS Newcastle–Ottawa scale

^a p for heterogeneity within each subgroup

^b p for heterogeneity between subgroups with meta-regression analyses

Table 3 The most commonly studied characteristics as predictors of mortality in the reviewed studies

Risk factor	ESBL-PE only studies n/N (%)	ESBL-PE vs non-ESBL-PE studies n/N (%)	Total n/N (%)	Identified as independent predictor for mortality
Age	5/6 (83.3)	13/19 (68.4)	18/25 (72.0)	0 + 0
Gender	4/6 (66.7)	11/19 (57.9)	15/25 (60.0)	0 + 1 (22)
CCI	1/6 (16.7)	4/19 (21.1)	5/25 (20.0)	0 + 2 (16,42)
ESBL production	1/6 (16.7)	12/19 (63.2)	13/25 (52.0)	0 + 3 (13,14,16)
Neutropenia	2/6 (33.3)	11/19 (57.9)	13/25 (52.0)	0 + 4 (13,14,24,35)
Inadequate initial antimicrobial treatment	3/6 (50.0)	13/19 (68.4)	16/25 (64.0)	0 + 3 (13,19,25)
ICU admission	2/6 (33.3)	6/19 (31.6)	8/25 (32.0)	0 + 5 (14,19,27,33,34)
Immunosuppressant use	0	3/19 (15.8)	3/25 (12.0)	0 + 1 (14)
Indwelling urinary catheter	2/6 (33.3)	1/19 (5.3)	3/25 (12.0)	1 (23) + 1 (14)
Infecting organism, Klebsiella pneumoniae	0	5/19 (26.3)	5/25 (20.0)	0 + 1 (18)
Intra-abdominal infection	4/6 (66.7)	3/19 (15.8)	7/25 (28.0)	0 + 1 (28)
Mechanical ventilation	0	2/19 (10.5)	2/25 (8.0)	0 + 1 (16)
Metastasis	0	1/19 (5.3)	1/25 (4.0)	0 + 1 (33)
Organ failure	1/6 (16.7)	2/19 (10.5)	3/25 (12.0)	0 + 1 (33)
Pneumonia	1/6 (16.7)	5/19 (26.3)	6/25 (24.0)	1 (31) + 4 (14,16,21,28)
Pitt bacteremia score	4/6 (66.7)	4/19 (21.1)	8/25 (32.0)	1 (32) + 2 (14,42)
Severe sepsis/ septic shock	3/6 (50.0)	11/19 (57.9)	14/25 (56.0)	1 (31) + 8 (14,16,18,19,22,24,28,33)
Solid tumor	3/6 (50.0)	8/19 (42.1)	11/25 (44.0)	0 + 1 (27)
Simultaneous corticosteroid therapy	0	8/19 (42.1)	8/25 (32.0)	0 + 2 (19,27)

ESBL-PE extended-spectrum β-lactamase-producing Enterobacteriaceae, CCI Charlson Index Score, ICU intensive care unit

Refers to the variables for which data were reported in the individual studies

by ESBL-PE among patients with malignancy [14, 16, 21, 24]. Hence, the accuracy of the conclusion needs to be further confirmed. The combined RR of sensitivity analysis further confirmed the stability of the results. Besides, the meta-regression analyses also suggested that the study region might be the source of heterogeneity in this meta-analysis, despite other relevant factors such as age, comorbidities, and antimicrobial treatment regimens cannot be analyzed due to lack of relevant data. However, Begg's test and Egger's test showed there was no evidence of publication bias in our study.

In our study, approximately 72.0% of studies analyzed the relationship between age and mortality of BSIs caused by ESBL-PE in patients with malignancy. However, there were no studies that identified age as independent predictor. Furthermore, more than 50.0% of studies concluded that severe sepsis/ septic shock, pneumonia, and ICU admission were the most common independent risk factors in mortality. Besides, fewer studies confirmed that neutropenia was more common in patients who died. According to a study conducted by Vardakas KZ et al., they reported that underlying diseases and severity scores were the most commonly identified prognostic factors of mortality in patients with infections due to multi-drug resistant Gram-negative bacteria (MDRGNB) [12]. Similar to the previous study, [12] we also found that severe sepsis/ septic shock was the most common risk factor in mortality. However, only fewer studies concluded that the Pitt bacteremia score and Charlson Index Score (CCI) were more common in patients who died. An interesting finding of our study is that only three studies confirmed ESBL production was an independent risk factor in mortality. Rottier WC et al. reported that ESBL production was associated with higher mortality compared with bacteremia with non-ESBL-PE [41]. This could be due to the small sample size of some studies we included in this study. Therefore, more prospective multicenter studies and clinical trials were urgently needed in the future to provide sufficient evidence.

To our knowledge, this is the first study that evaluated the clinical outcomes and risk factors in BSIs caused by ESBL-PE among patients with malignancy using Meta-analysis. However, our study has several limitations. First, all of the included articles were observational studies and published in English. Besides, high-estimated heterogeneity was observed, which is probably related to different design, study region, and study population. Moreover, some studies included oncological patients with FN, but the data was not available for subgroup analysis. Therefore, the clinical outcomes of BSIs caused by ESBL-PE in these patients should be further validated since these patients are more vulnerable to severe infections. To sum up, clinical conclusions need to be comprehensive

assessment in combination with other indicators, and more sample sizes and studies need to be added to verify our results.

Conclusions

In summary, our study provided a systematic analysis for the prognosis and risk factors of BSIs due to ESBL-PE in oncological patients. Our findings suggested that BSIs caused by ESBL-PE in patients with malignancy were associated with worse clinical outcomes compared with non-ESBL-PE infections. Furthermore, children and hematological malignancy were associated with higher mortality. We also identified that severe sepsis/ septic shock, pneumonia, and ICU admission were the most common predictors of mortality. Large-scale and prospective studies are warranted to verify the results of our study.

Supplementary information

Supplementary information accompanies this paper at <https://doi.org/10.1186/s12941-020-00395-7>.

Additional file 1: Table S1. Quality assessment conducted according to the NOS for all included studies. **Figure S1.** Forest plots of mortality in BSIs due to ESBL-PE among patients with malignancy by different subgroups. (a) study design; (b) region; (c) population; (d) malignancy type (e) FN; (f) ESBL detection methods; (g) NOS score. **Figure S2.** Sensitivity analysis of mortality in BSIs due to ESBL-PE among patients with malignancy. **Figure S3.** Tests for publication bias. a Begg's funnel plot with pseudo 95% confidence limits; b Egger's publication bias plot.

Abbreviations

ESBL-PE: Extended-spectrum β -lactamase-producing Enterobacteriaceae; BSI: Bloodstream infection; SC: Single-center; MC: Multicenter; NR: Not reported; FN: Febrile neutropenia; RR: Relative risk; CI: Confidence interval; NOS: Newcastle-Ottawa scale; CCI: Charlson Index Score; ICU: Intensive care unit.

Acknowledgements

Not applicable.

Authors' contributions

TT and YY conceived the study. AMJ, NL, and RZ performed the search, extracted the data and performed the analyses. HRZ, XC, CXF, and RZ participated in the study design and helped with the data analyses. XQZ and XF participated in the study design and manuscript revision. All authors interpreted the data, and AMJ and NL wrote the paper. All authors read and approved the final manuscript.

Funding

This research did not receive any specific grant from funding agencies in the public, commercial, or not-for-profit sectors.

Availability of data and materials

Data sharing is not applicable to this article as no datasets were generated or analyzed during the current study.

Ethics approval and consent to participate

Not applicable.

Consent for publication

Not applicable.

Competing interests

The authors declare that they have no competing interests.

Author details

¹ Department of Medical Oncology, The First Affiliated Hospital of Xi'an Jiaotong University, Xi'an, Shaanxi 710061, People's Republic of China. ² Department of Nutrition and Food Hygiene, School of Public Health, Tongji Medical College, Huazhong University of Science and Technology, Wuhan, China.

Received: 21 February 2020 Accepted: 7 November 2020

Published online: 23 November 2020

References

- Alevizakos M, Gaitanidis A, Andreatos N, Arunachalam K, Flokas ME, Mylonakis E. Bloodstream infections due to extended-spectrum beta-lactamase-producing Enterobacteriaceae among patients with malignancy: a systematic review and meta-analysis. *Int J Antimicrob Agents*. 2017a;50(5):657–63.
- Paterson DL, Bonomo RA. Extended-spectrum beta-lactamases: a clinical update. *Clin Microbiol Rev*. 2005;18(4):657–86.
- Biehl LM, Schmidt-Hieber M, Liss B, Cornely OA, Vehreschild MJ. Colonization and infection with extended spectrum beta-lactamase producing Enterobacteriaceae in high-risk patients—review of the literature from a clinical perspective. *Crit Rev Microbiol*. 2016;42(1):1–16.
- Alevizakos M, Karanika S, Detsis M, Mylonakis E. Colonisation with extended-spectrum beta-lactamase-producing Enterobacteriaceae and risk for infection among patients with solid or haematological malignancy: a systematic review and meta-analysis. *Int J Antimicrob Agents*. 2016a;48(6):647–54.
- Gudiol C, Aguado JM, Carratala J. Bloodstream infections in patients with solid tumors. *Virulence*. 2016;7(3):298–308.
- Ndir A, Diop A, Ka R, Faye PM, Dia-Badiane NM, Ndoye B, et al. Infections caused by extended-spectrum beta-lactamases producing Enterobacteriaceae: clinical and economic impact in patients hospitalized in 2 teaching hospitals in Dakar. *Senegal Antimicrob Resist Infect Control*. 2016;5:13.
- Alevizakos M, Karanika S, Detsis M, Mylonakis E. Colonisation with extended-spectrum β -lactamase-producing Enterobacteriaceae and risk for infection among patients with solid or haematological malignancy: a systematic review and meta-analysis. *Int J Antimicrob Agents*. 2016b;48(6):647–54.
- Alevizakos M, Gaitanidis A, Andreatos N, Arunachalam K, Flokas ME, Mylonakis E. Bloodstream infections due to extended-spectrum β -lactamase-producing Enterobacteriaceae among patients with malignancy: a systematic review and meta-analysis. *Int J Antimicrob Agents*. 2017b;50(5):657–63.
- Liberati A, Altman DG, Tetzlaff J, Mulrow C, Gotzsche PC, Ioannidis JP, et al. The PRISMA statement for reporting systematic reviews and meta-analyses of studies that evaluate healthcare interventions: explanation and elaboration. *BMJ (Clin Res Ed)*. 2009;339:b2700.
- Stang A. Critical evaluation of the Newcastle-Ottawa scale for the assessment of the quality of nonrandomized studies in meta-analyses. *Eur J Epidemiol*. 2010;25(9):603–5.
- Ha YE, Kang CI, Cha MK, Park SY, Wi YM, Chung DR, et al. Epidemiology and clinical outcomes of bloodstream infections caused by extended-spectrum beta-lactamase-producing *Escherichia coli* in patients with cancer. *Int J Antimicrob Agents*. 2013a;42(5):403–9.
- Vardakas KZ, Rafailidis PI, Konstantelias AA, Falagas ME. Predictors of mortality in patients with infections due to multi-drug resistant Gram negative bacteria: the study, the patient, the bug or the drug? *J Infect*. 2013;66(5):401–14.
- Trecharichi EM, Tumbarello M, Spanu T, Caira M, Fianchi L, Chiusolo P, et al. Incidence and clinical impact of extended-spectrum- β -lactamase (ESBL) production and fluoroquinolone resistance in bloodstream infections caused by *Escherichia coli* in patients with hematological malignancies. *J Infect*. 2009;58(4):299–307.
- Kang CI, Chung DR, Ko KS, Peck KR, Song JH. Risk factors for infection and treatment outcome of extended-spectrum beta-lactamase-producing *Escherichia coli* and *Klebsiella pneumoniae* bacteremia in patients with hematologic malignancy. *Ann Hematol*. 2012;91(1):115–21.
- Wu UI, Chen WC, Yang CS, Wang JL, Hu FC, Chang SC, et al. Ertapenem in the treatment of bacteremia caused by extended-spectrum beta-lactamase-producing *Escherichia coli*: a propensity score analysis. *IJID*. 2012;16(1):e47–52.
- Ha YE, Kang CI, Cha MK, Park SY, Wi YM, Chung DR, et al. Epidemiology and clinical outcomes of bloodstream infections caused by extended-spectrum β -lactamase-producing *Escherichia coli* in patients with cancer. *Int J Antimicrob Agents*. 2013b;42(5):403–9.
- Kang CI, Wi YM, Ko KS, Chung DR, Peck KR, Lee NY, et al. Outcomes and risk factors for mortality in community-onset bacteremia caused by extended-spectrum beta-lactamase-producing *Escherichia coli*, with a special emphasis on antimicrobial therapy. *Scand J Infect Dis*. 2013;45(7):519–25.
- Kim SH, Kwon JC, Choi SM, Lee DG, Park SH, Choi JH, et al. *Escherichia coli* and *Klebsiella pneumoniae* bacteremia in patients with neutropenic fever: factors associated with extended-spectrum beta-lactamase production and its impact on outcome. *Ann Hematol*. 2013;92(4):533–41.
- Bodro M, Gudiol C, Garcia-Vidal C, Tubau F, Contra A, Boix L, et al. Epidemiology, antibiotic therapy and outcomes of bacteremia caused by drug-resistant ESKAPE pathogens in cancer patients. *Support Care Cancer*. 2014;22(3):603–10.
- Han SB, Jung SW, Bae EY, Lee JW, Lee DG, Chung NG, et al. Extended-spectrum beta-lactamase-producing *Escherichia coli* and *Klebsiella pneumoniae* bacteremia in febrile neutropenic children. *Microb Drug Resist*. 2015;21(2):244–51.
- Cattaneo C, Zappasodi P, Mancini V, Annaloro C, Pavesi F, Skert C, et al. Emerging resistant bacteria strains in bloodstream infections of acute leukaemia patients: results of a prospective study by the Rete Ematologica Lombarda (Rel). *Ann Hematol*. 2016;95(12):1955–63.
- Ma J, Li N, Liu Y, Wang C, Liu X, Chen S, et al. Antimicrobial resistance patterns, clinical features, and risk factors for septic shock and death of nosocomial *E. coli* bacteremia in adult patients with hematological disease. *Medicine*. 2017;96(21):e6959.
- Cattaneo C, Di Blasi R, Skert C, Candoni A, Martino B, Di Renzo N, et al. Bloodstream infections in haematological cancer patients colonized by multidrug-resistant bacteria. *Ann Hematol*. 2018;97(9):1717–26.
- Çeken S, Iskender G, Gedik H, Duygu F, Mert D, Kaya AH, et al. Risk factors for bloodstream infections due to extended-spectrum β -lactamase producing enterobacteriaceae in cancer patients. *J Infect Dev Countries*. 2018;12(4):265–72.
- Islas-Muñoz B, Volkow-Fernández P, Ibanes-Gutiérrez C, Villamar-Ramírez A, Vilar-Compte D, Cornejo-Juárez P. Bloodstream infections in cancer patients. Risk factors associated with mortality. *Int J Infect Dis*. 2018;71:59–64.
- Isendahl J, Giske CG, Tegmark Wisell K, Ternhag A, Nauclér P. Risk factors for community-onset bloodstream infection with extended-spectrum β -lactamase-producing Enterobacteriaceae: national population-based case-control study. *Clin Microbiol Infect*. 2019;25(11):1408–14.
- Gudiol C, Calatayud L, Garcia-Vidal C, Lora-Tamayo J, Císnal M, Duarte R, et al. Bacteraemia due to extended-spectrum beta-lactamase-producing *Escherichia coli* (ESBL-EC) in cancer patients: clinical features, risk factors, molecular epidemiology and outcome. *J Antimicrob Chemother*. 2010;65(2):333–41.
- Kim SJ, Park KH, Chung JW, Sung H, Choi SH, Choi SH. Prevalence and impact of extended-spectrum β -lactamase production on clinical outcomes in cancer patients with enterobacter species bacteremia. *Korean J Intern Med*. 2014;29(5):637–46.
- Gudiol C, Royo-Cebrecos C, Abdala E, Akova M, Alvarez R, la Maestra-de Calle G, et al. Efficacy of beta-lactam/beta-lactamase inhibitor combinations for the treatment of bloodstream infection due to extended-spectrum-beta-lactamase-producing Enterobacteriaceae in hematological patients with neutropenia. *Antimicrob Agents Chemother*. 2017;61(8):e00164–e217.
- Namikawa H, Yamada K, Yamairi K, Shibata W, Fujimoto H, Takizawa E, et al. Mortality caused by extended-spectrum beta-lactamase-producing Enterobacteriaceae bacteremia; a case control study: alert to Enterobacteriaceae strains with high minimum inhibitory concentrations of piperacillin/tazobactam. *Diagn Microbiol Infect Dis*. 2019;94(3):287–92.

31. Wang SS, Lee NY, Hsueh PR, Huang WH, Tsui KC, Lee HC, et al. Clinical manifestations and prognostic factors in cancer patients with bacteremia due to extended-spectrum β -lactamase-producing *Escherichia coli* or *Klebsiella pneumoniae*. *J Microbiol Immunol Infect*. 2011;44(4):282–8.
32. Benanti GE, Brown ART, Shigle TL, Tarrand JJ, Bhatti MM, McDaniel PM, et al. Carbapenem versus cefepime or piperacillin-tazobactam for empiric treatment of bacteremia due to extended-spectrum-beta-lactamase-producing *Escherichia coli* in patients with hematologic malignancy. *Antimicrob Agents Chemother*. 2019. <https://doi.org/10.1128/AAC.01813-18>.
33. Zhang Q, Gao HY, Li D, Li Z, Qi SS, Zheng S, et al. Clinical outcome of *Escherichia coli* bloodstream infection in cancer patients with/without biofilm formation: a single-center retrospective study. *IDR*. 2019;12:359–71.
34. Metan G, Demiraslan H, Kaynar LG, Zararsiz G, Alp E, Eser B. Factors influencing the early mortality in haematological malignancy patients with nosocomial Gram negative bacilli bacteraemia: a retrospective analysis of 154 cases. *Brazilian J Infect Dis*. 2013;17(2):143–9.
35. Kim YJ, Jung SM, Kang J, Ryoo SM, Sohn CH, Seo DW, et al. Risk factors for extended-spectrum beta-lactamase-producing Enterobacteriaceae infection causing septic shock in cancer patients with chemotherapy-induced febrile neutropenia. *Intern Emerg Med*. 2019;14(3):433–40.
36. Pitout JDD, Laupland KB. Extended-spectrum β -lactamase-producing Enterobacteriaceae: an emerging public-health concern. *Lancet Infect Dis*. 2008;8(3):159–66.
37. Alevizakos M, Mylonakis E. Colonization and infection with extended-spectrum beta-lactamase producing Enterobacteriaceae in patients with malignancy. *Expert Rev Anti Infect Ther*. 2017;15(7):653–61.
38. Schelenz S, Nwaka D, Hunter PR. Longitudinal surveillance of bacteraemia in haematology and oncology patients at a UK cancer centre and the impact of ciprofloxacin use on antimicrobial resistance. *J Antimicrob Chemother*. 2013;68(6):1431–8.
39. Satlin MJ, Cohen N, Ma KC, Gedrimaite Z, Soave R, Askin G, et al. Bacteremia due to carbapenem-resistant Enterobacteriaceae in neutropenic patients with hematologic malignancies. *J Infect*. 2016;73(4):336–45.
40. Cornejo-Juarez P, Perez-Jimenez C, Silva-Sanchez J, Velazquez-Acosta C, Gonzalez-Lara F, Reyna-Flores F, et al. Molecular analysis and risk factors for *Escherichia coli* producing extended-spectrum beta-lactamase bloodstream infection in hematological malignancies. *PLoS ONE*. 2012;7(4):e35780.
41. Rottier WC, Ammerlaan HS, Bonten MJ. Effects of confounders and intermediates on the association of bacteraemia caused by extended-spectrum beta-lactamase-producing Enterobacteriaceae and patient outcome: a meta-analysis. *J Antimicrob Chemother*. 2012;67(6):1311–20.
42. Ben-Chetrit E, Eldaim MA, Bar-Meir M, Dodin M, Katz DE. Associated factors and clinical outcomes of bloodstream infection due to extended-spectrum β -lactamase-producing *Escherichia coli* and *Klebsiella pneumoniae* during febrile neutropenia. *Int J Antimicrob Agents*. 2019;53(4):423–8.

Publisher's Note

Springer Nature remains neutral with regard to jurisdictional claims in published maps and institutional affiliations.

Ready to submit your research? Choose BMC and benefit from:

- fast, convenient online submission
- thorough peer review by experienced researchers in your field
- rapid publication on acceptance
- support for research data, including large and complex data types
- gold Open Access which fosters wider collaboration and increased citations
- maximum visibility for your research: over 100M website views per year

At BMC, research is always in progress.

Learn more biomedcentral.com/submissions



Terms and Conditions

Springer Nature journal content, brought to you courtesy of Springer Nature Customer Service Center GmbH (“Springer Nature”).

Springer Nature supports a reasonable amount of sharing of research papers by authors, subscribers and authorised users (“Users”), for small-scale personal, non-commercial use provided that all copyright, trade and service marks and other proprietary notices are maintained. By accessing, sharing, receiving or otherwise using the Springer Nature journal content you agree to these terms of use (“Terms”). For these purposes, Springer Nature considers academic use (by researchers and students) to be non-commercial.

These Terms are supplementary and will apply in addition to any applicable website terms and conditions, a relevant site licence or a personal subscription. These Terms will prevail over any conflict or ambiguity with regards to the relevant terms, a site licence or a personal subscription (to the extent of the conflict or ambiguity only). For Creative Commons-licensed articles, the terms of the Creative Commons license used will apply.

We collect and use personal data to provide access to the Springer Nature journal content. We may also use these personal data internally within ResearchGate and Springer Nature and as agreed share it, in an anonymised way, for purposes of tracking, analysis and reporting. We will not otherwise disclose your personal data outside the ResearchGate or the Springer Nature group of companies unless we have your permission as detailed in the Privacy Policy.

While Users may use the Springer Nature journal content for small scale, personal non-commercial use, it is important to note that Users may not:

1. use such content for the purpose of providing other users with access on a regular or large scale basis or as a means to circumvent access control;
2. use such content where to do so would be considered a criminal or statutory offence in any jurisdiction, or gives rise to civil liability, or is otherwise unlawful;
3. falsely or misleadingly imply or suggest endorsement, approval, sponsorship, or association unless explicitly agreed to by Springer Nature in writing;
4. use bots or other automated methods to access the content or redirect messages
5. override any security feature or exclusionary protocol; or
6. share the content in order to create substitute for Springer Nature products or services or a systematic database of Springer Nature journal content.

In line with the restriction against commercial use, Springer Nature does not permit the creation of a product or service that creates revenue, royalties, rent or income from our content or its inclusion as part of a paid for service or for other commercial gain. Springer Nature journal content cannot be used for inter-library loans and librarians may not upload Springer Nature journal content on a large scale into their, or any other, institutional repository.

These terms of use are reviewed regularly and may be amended at any time. Springer Nature is not obligated to publish any information or content on this website and may remove it or features or functionality at our sole discretion, at any time with or without notice. Springer Nature may revoke this licence to you at any time and remove access to any copies of the Springer Nature journal content which have been saved.

To the fullest extent permitted by law, Springer Nature makes no warranties, representations or guarantees to Users, either express or implied with respect to the Springer nature journal content and all parties disclaim and waive any implied warranties or warranties imposed by law, including merchantability or fitness for any particular purpose.

Please note that these rights do not automatically extend to content, data or other material published by Springer Nature that may be licensed from third parties.

If you would like to use or distribute our Springer Nature journal content to a wider audience or on a regular basis or in any other manner not expressly permitted by these Terms, please contact Springer Nature at

onlineservice@springernature.com